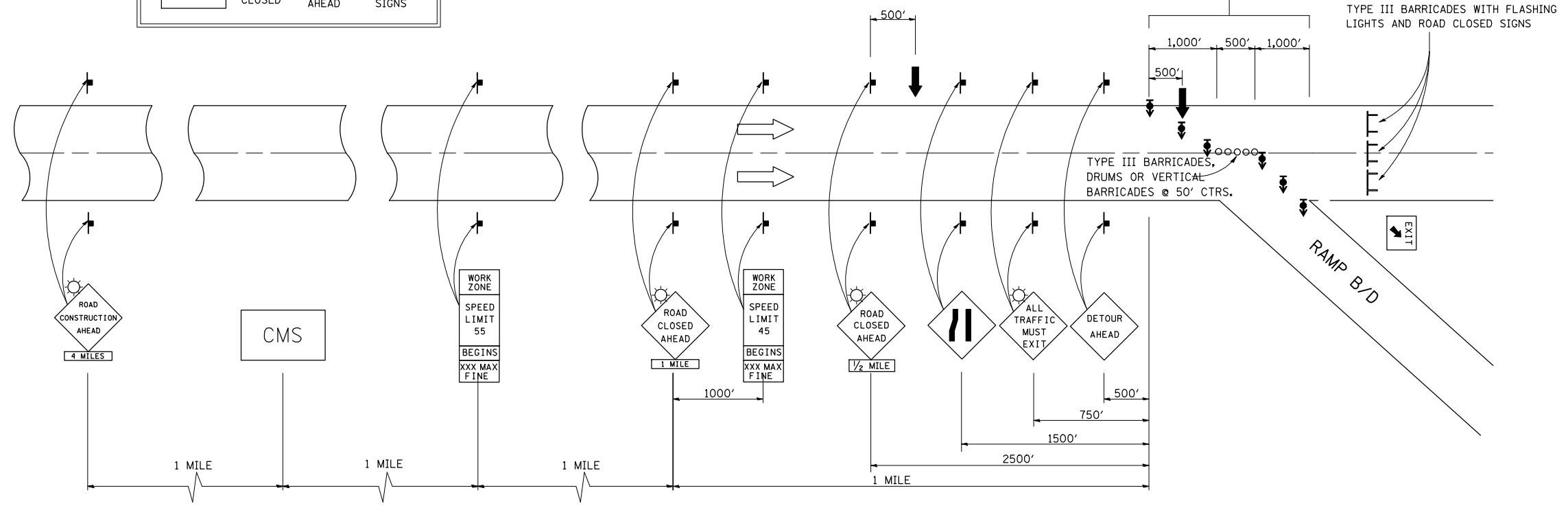


INTERSTATE DETOUR USING ENTRANCE AND EXIT RAMP

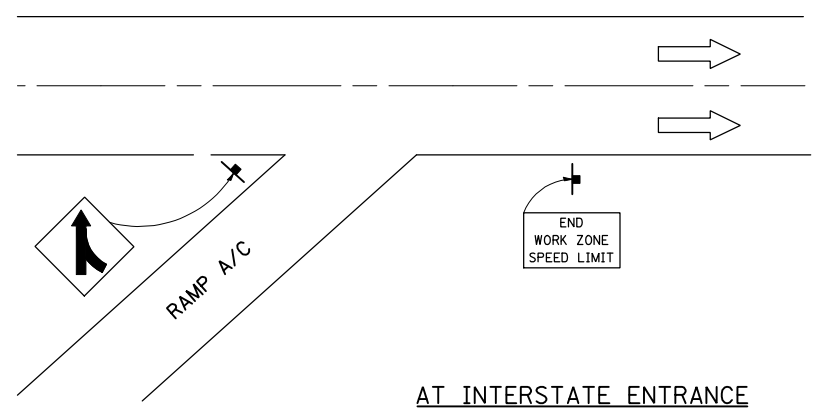
A CHANGEABLE MESSAGE SIGN SHALL BE USED IN ADVANCE OF SIGNING TO WARN OF CLOSURE

CMS	ROAD CLOSED	3 MILES AHEAD	FOLLOW DETOUR SIGNS
-----	-------------	---------------	---------------------

DIRECTIONAL BARRICADES WITH STEADY BURNING LIGHTS AT 50' (15 m) CTS. IN TAPER.
 DRUMS WITH STEADY BURNING LIGHTS IN TANGENT (BETWEEN TAPERS) AT 100' (30 m) CTS.
 FOR OFF PEAK CLOSURES LESS THAN 24 HOURS, THE TANGENT SECTION MAY BE OMITTED BY APPROVAL OF THE ENGINEER.



SYMBOLS	
	ARROW BOARD
	SIGN
	DRUM W/STEADY BURNING LIGHT
	TYPE III BARRICADE
	DIRECTIONAL BARRICADE W/STEADY BURNING LIGHT
	LIGHTED FLAGGER STATIONS



Note: All dimensions are in INCHES (millimeters) unless otherwise shown.

FILE NAME =	USER NAME = dawsonkb	DESIGNED -	REVISED - 12/06
ct:\pw\work\PWIDOT\DAWSONKB\d0176650\0590875-54-63-District5Standards.dgn		DRAWN -	REVISED -
	PLOT SCALE = 40.0000' / IN.	CHECKED -	REVISED -
	PLOT DATE = 12/17/2009	DATE -	REVISED -

STATE OF ILLINOIS
 DEPARTMENT OF TRANSPORTATION

INTERSTATE DETOUR USING ENTRANCE AND EXIT RAMPS

SCALE:	SHEET NO.	OF SHEETS	STA.	TO STA.
--------	-----------	-----------	------	---------

DISTRICT 5 DETAIL NO. X7011005				
F.A.I. RTE.	SECTION	COUNTY	TOTAL SHEETS	SHEET NO.
74	(10-6HB-5)BR	CHAMPAIGN	63	62
CONTRACT NO. 90875				
FED. ROAD DIST. NO. ILLINOIS FED. AID PROJECT				