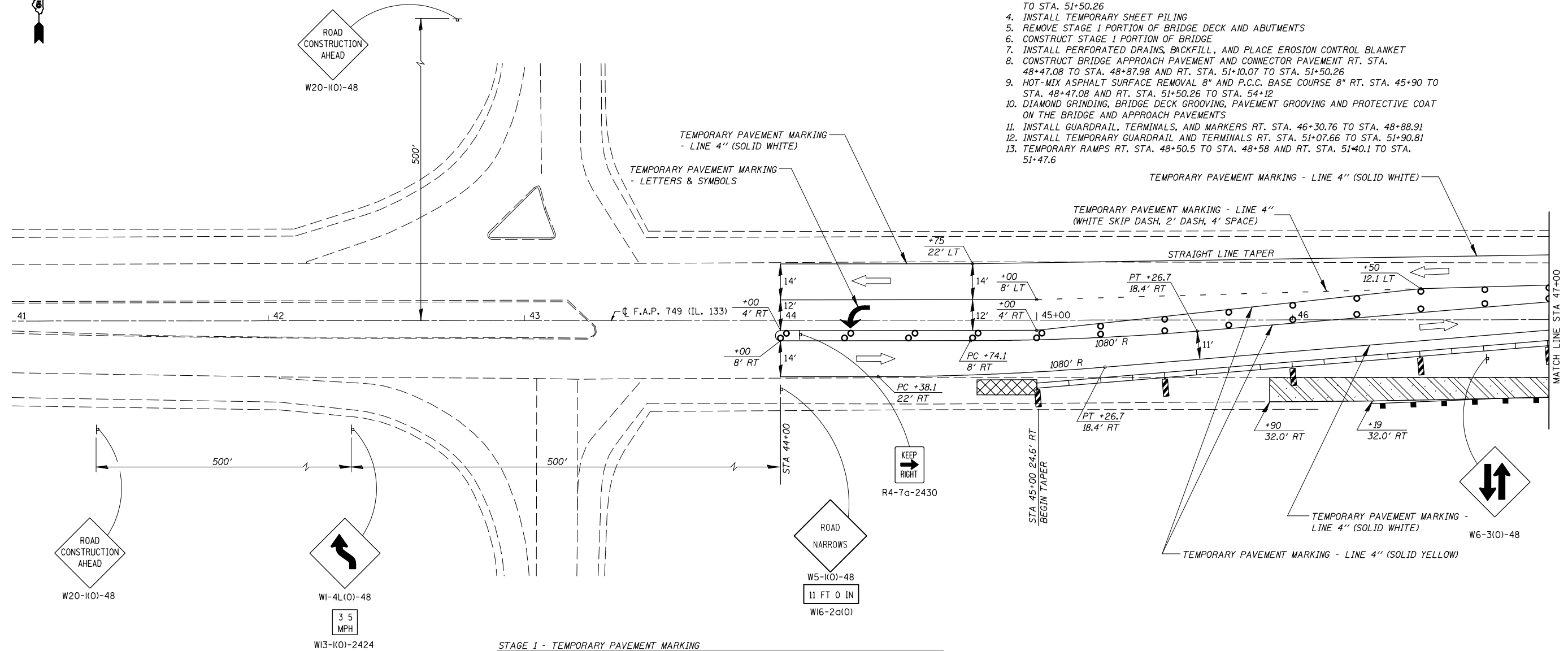


F.A.I. RTE.	SECTION	COUNTY	TOTAL SHEETS	SHEET NO.
57	*	DOUGLAS	65	20
STA. 41+00		TO STA. 47+00		
FED. ROAD DIST. NO.		ILLINOIS	FED. AID PROJECT	
* (15, 21-25HB-2)BR				
<b>CONTRACT NO. 90952</b>				

# TRAFFIC CONTROL & PROTECTION SPECIAL

## STAGE I

- STAGE I**  
STAGE I CONSTRUCTION CONSISTS OF THE FOLLOWING:
1. PLACE TRAFFIC IN THE STAGE I TEMPORARY LANES AND INSTALL TEMPORARY CONCRETE BARRIER, TEMPORARY IMPACT ATTENUATORS, TEMPORARY PAVEMENT MARKINGS, AND TRAFFIC CONTROL DEVICES AS SHOWN ON THE STAGE I TRAFFIC CONTROL & PROTECTION DETAIL
  2. GUARDRAIL REMOVAL RT. STA. 46+07 TO STA. 48+94
  3. APPROACH SLAB REMOVAL RT. STA. 48+47.08 TO STA. 48+87.51 AND RT. STA. 51+10.26 TO STA. 51+50.26
  4. INSTALL TEMPORARY SHEET PILING
  5. REMOVE STAGE I PORTION OF BRIDGE DECK AND ABUTMENTS
  6. CONSTRUCT STAGE I PORTION OF BRIDGE
  7. INSTALL PERFORATED DRAINS, BACKFILL, AND PLACE EROSION CONTROL BLANKET
  8. CONSTRUCT BRIDGE APPROACH PAVEMENT AND CONNECTOR PAVEMENT RT. STA. 48+47.08 TO STA. 48+87.98 AND RT. STA. 51+10.07 TO STA. 51+50.26
  9. HOT-MIX ASPHALT SURFACE REMOVAL 8" AND P.C.C. BASE COURSE 8" RT. STA. 45+90 TO STA. 48+47.08 AND RT. STA. 51+50.26 TO STA. 54+12
  10. DIAMOND GRINDING, BRIDGE DECK GROOVING, PAVEMENT GROOVING AND PROTECTIVE COAT ON THE BRIDGE AND APPROACH PAVEMENTS
  11. INSTALL GUARDRAIL, TERMINALS, AND MARKERS RT. STA. 46+30.76 TO STA. 48+88.91
  12. INSTALL TEMPORARY GUARDRAIL AND TERMINALS RT. STA. 51+07.66 TO STA. 51+90.81
  13. TEMPORARY RAMPS RT. STA. 48+50.5 TO STA. 48+58 AND RT. STA. 51+40.1 TO STA. 51+47.6



STAGE I - TEMPORARY PAVEMENT MARKING

TYPE	LOCATION	TEMPORARY PAVEMENT MARKING		WORK ZONE PAVEMENT MARKING REMOVAL SQ FT
		LINE 4" FOOT	LETTERS & SYMBOLS SQ FT	
<b>SOLID WHITE</b>				
EB OUTSIDE EDGE LINE	STA 44+00 TO STA 56+00	1,203		401.0
WB OUTSIDE EDGE LINE	STA 44+00 TO STA 56+00	1,200		400.0
WB TURN LANE	STA 44+00 TO STA 45+00	100		33.3
EB TURN LANE	STA 55+00 TO STA 56+00	100		33.3
<b>WHITE SKIP DASH</b>				
WB TURN LANE	STA 45+00 TO STA 46+50	122		40.7
EB TURN LANE	STA 53+50 TO STA 55+00	122		40.7
<b>SOLID YELLOW</b>				
EB MEDIAN EDGE LINE	STA 44+00 TO STA 56+00	1,208		402.7
WB MEDIAN EDGE LINE	STA 44+00 TO STA 56+00	1,208		402.7
<b>WHITE LEFT TURN ARROWS</b>				
WB TURN LANE	STA 44+18		15.6	
EB TURN LANE	STA 55+82		15.6	
<b>TOTAL</b>		<b>5,263</b>	<b>31.2</b>	<b>1754.4</b>

QUANTITIES FOR PLACEMENT AND REMOVAL OF TEMPORARY PAVEMENT MARKINGS ARE INCLUDED FOR INFORMATION ONLY. PLACING, MAINTAINING, AND REMOVING THESE ITEMS WILL NOT BE PAID FOR SEPARATELY BUT SHALL BE INCLUDED IN THE COST FOR TRAFFIC CONTROL AND PROTECTION (SPECIAL)

SYMBOLS	
●	FLEXIBLE DELINEATORS @ 25' CTS.
○	LIGHTED VERTICAL BARRICADE, DOUBLE FACED @ 25' CTS.
◁	CRYSTAL MONODIRECTIONAL REFLECTOR @ 25' CTS.
▨	VERTICAL PANELS W/STEADY BURNING LIGHT ALONG TAPER @ 25' CTS.
▬	TEMPORARY CONCRETE BARRIER
—	TEMPORARY PAVEMENT MARKINGS
▨	IMPACT ATTENUATOR TEMPORARY (NON-REDIRECTIVE) TEST LEVEL 3
▨	HOT-MIX ASPHALT SURFACE REMOVAL 8" / P.C.C. BASE COURSE 8"
▨	APPROACH SLAB REMOVAL
▨	REMOVAL OF EXISTING CONCRETE DECK

SHEET 1 OF 3

**TRAFFIC CONTROL & PROTECTION**  
**STAGE I**

FAI ROUTE 57  
SECTION (15, 21-25HB-2)BR  
DOUGLAS COUNTY

CUMMINS ENGINEERING CORPORATION

JOB #:	2114.1
FILE:	STAGE1
DATE:	2/27/07