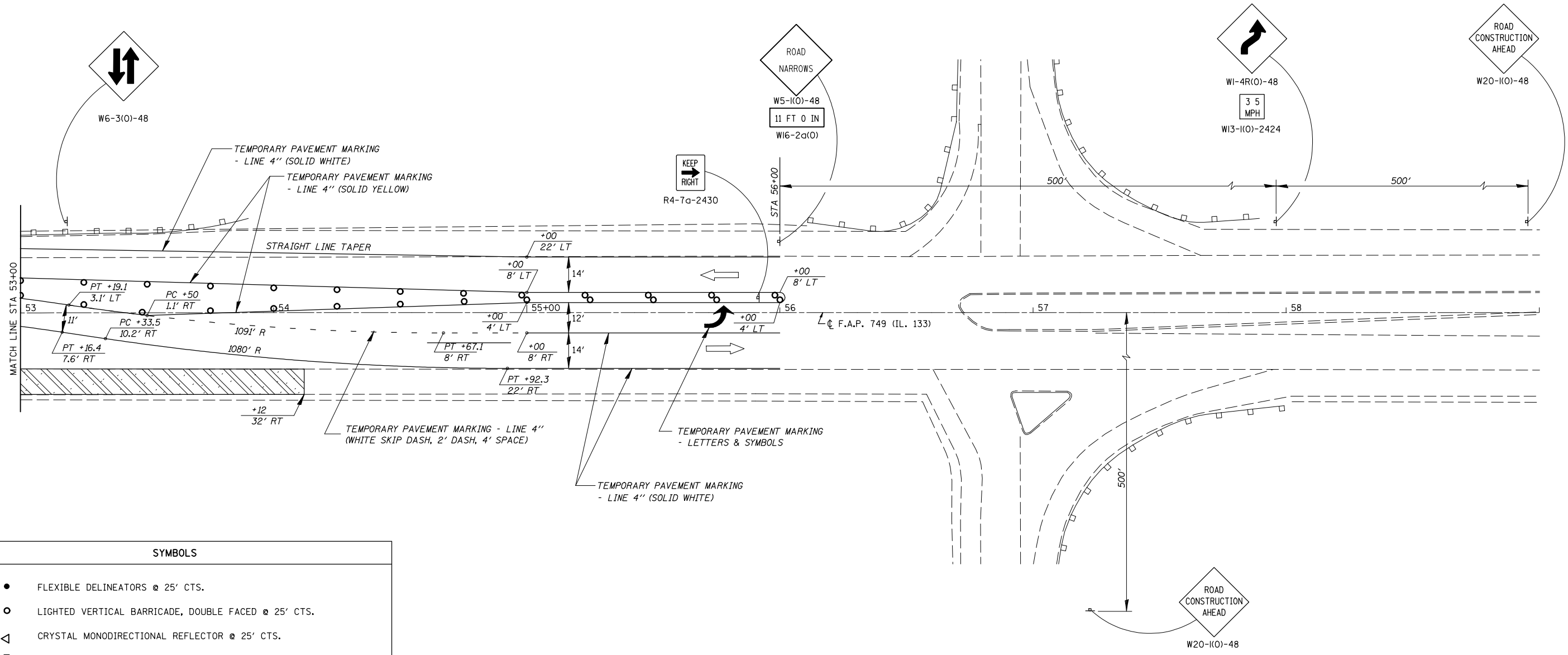


F.A.I. RTE.	SECTION	COUNTY	TOTAL SHEETS	SHEET NO.
57	*	DOUGLAS	65	22
STA. 53+00		TO STA. 59+00		
FED. ROAD DIST. NO.	ILLINOIS	FED. AID PROJECT		
* (15, 21-25HB-2)BR				
CONTRACT NO. 90952				

TRAFFIC CONTROL & PROTECTION SPECIAL

STAGE I



SYMBOLS	
●	FLEXIBLE DELINEATORS @ 25' CTS.
○	LIGHTED VERTICAL BARRICADE, DOUBLE FACED @ 25' CTS.
△	CRYSTAL MONODIRECTIONAL REFLECTOR @ 25' CTS.
▨	VERTICAL PANELS W/STEADY BURNING LIGHT ALONG TAPER @ 25' CTS.
▬	TEMPORARY CONCRETE BARRIER
—	TEMPORARY PAVEMENT MARKINGS
▧	IMPACT ATTENUATOR TEMPORARY (NON-REDIRECTIVE) TEST LEVEL 3
▨	HOT-MIX ASPHALT SURFACE REMOVAL 8" / P.C.C. BASE COURSE 8"
▩	APPROACH SLAB REMOVAL
▪	REMOVAL OF EXISTING CONCRETE DECK

SHEET 3 OF 3

TRAFFIC CONTROL & PROTECTION
STAGE I

FAI ROUTE 57
SECTION (15, 21-25HB-2)BR
DOUGLAS COUNTY

CUMMINS ENGINEERING CORPORATION	JOB #: 2114.1
	FILE: STAGE1
	DATE: 3/13/06