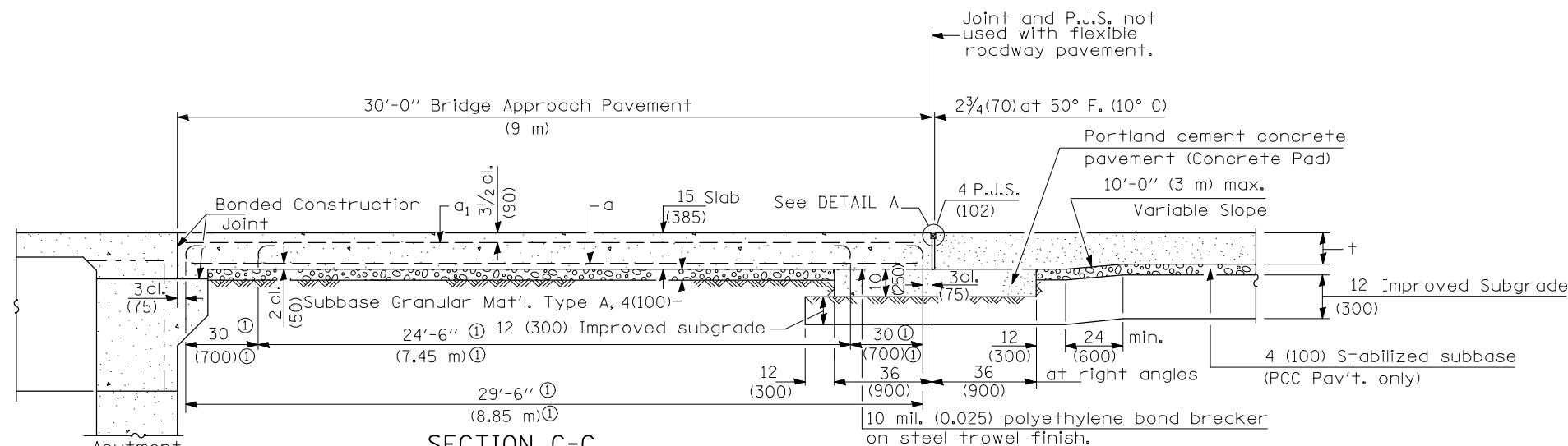
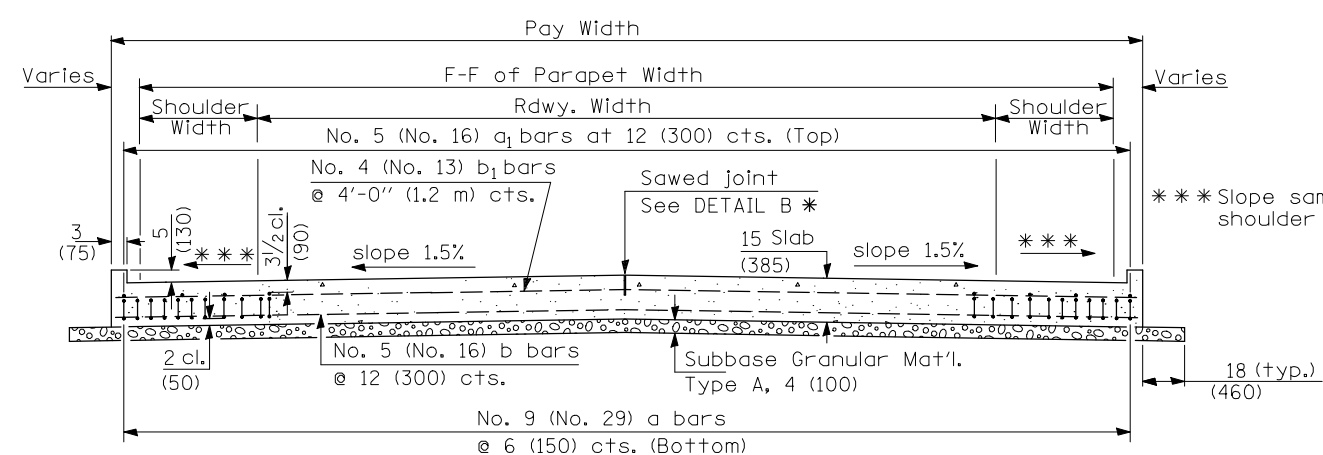
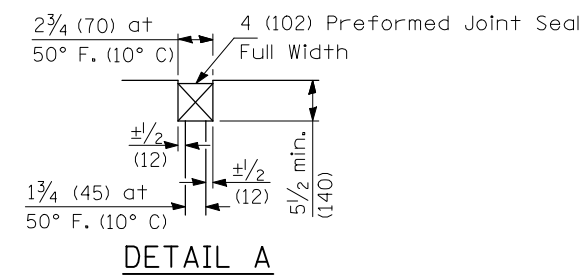
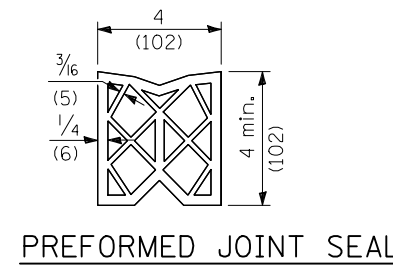


F.A.I. RTE.	SECTION	COUNTY	TOTAL SHEETS	SHEET NO.
57	•	DOUGLAS	65	30C
STA.		TO STA.		
FED. ROAD DIST. NO.	ILLINOIS	FED. AID PROJECT		
* (15, 21-25HB-2)BR				
CONTRACT NO. 90952				

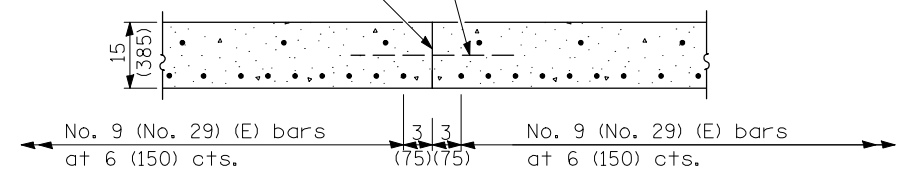


① Stagger No. 9 (No. 29) a bars as shown on plan - full width



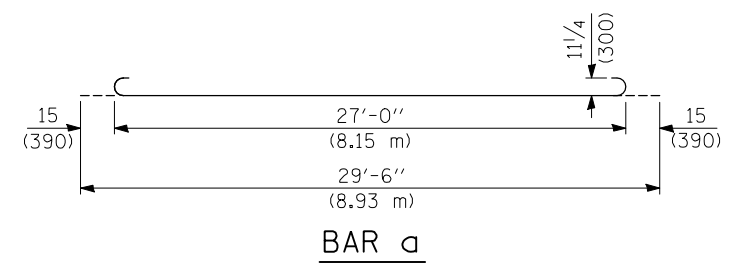
SECTION D-D
(See Plan for Dimensions not shown)

Longitudinal Construction Joint in accordance with details shown on Standard 420001.

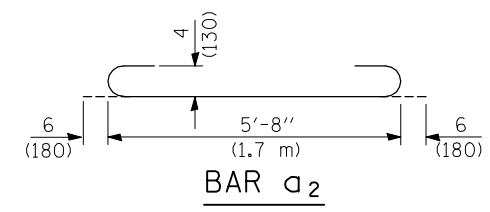


OPTIONAL LONGITUDINAL CONSTRUCTION JOINT

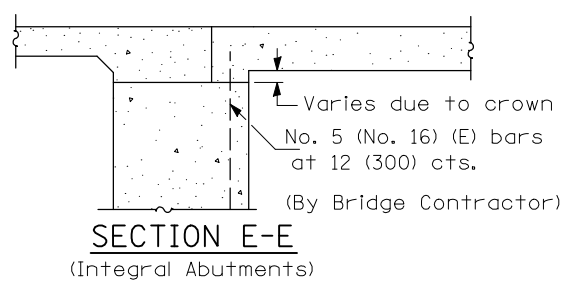
As approved by the Engineer, the Contractor may elect to reduce the widths of pour by use of the Optional Longitudinal Construction Joint shown. Joints shall be located at the edge of a traffic lane.



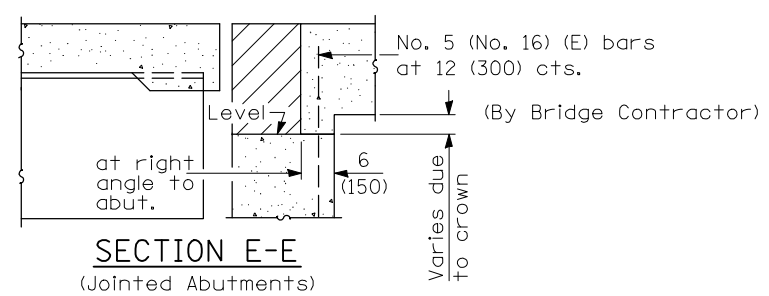
BAR a



BAR a2



SECTION E-E
(Integral Abutments)



SECTION E-E
(Jointed Abutments)

DESIGN STRESSES
 $f_y = 60,000$ p.s.i. (400 MPa)
 $f'_c = 3,500$ p.s.i. (24 MPa)
 $n = 8.5$

**BRIDGE APPROACH PAVEMENT
DETAILS (SHEET 3 OF 4)**

FAI ROUTE 57
SECTION (15, 21-25HB-2)BR
DOUGLAS COUNTY

CUMMINS ENGINEERING CORPORATION	JOB #: 2114.1 FILE: 2114INLET DATE: 10/20/06
---------------------------------	--