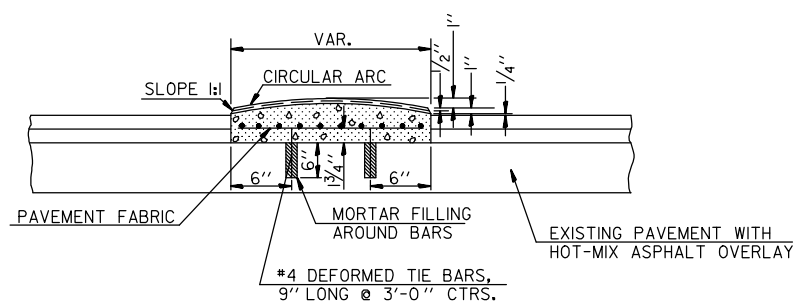
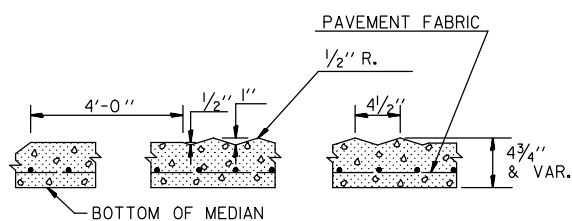


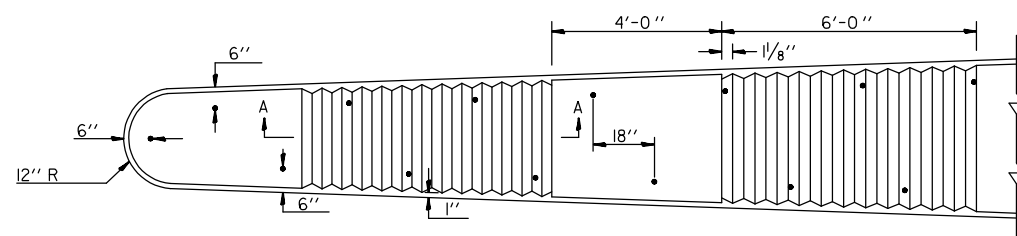
DETAIL OF CORRUGATED MEDIAN (DOWELLED)



TRANSVERSE SECTION



SECTION A-A

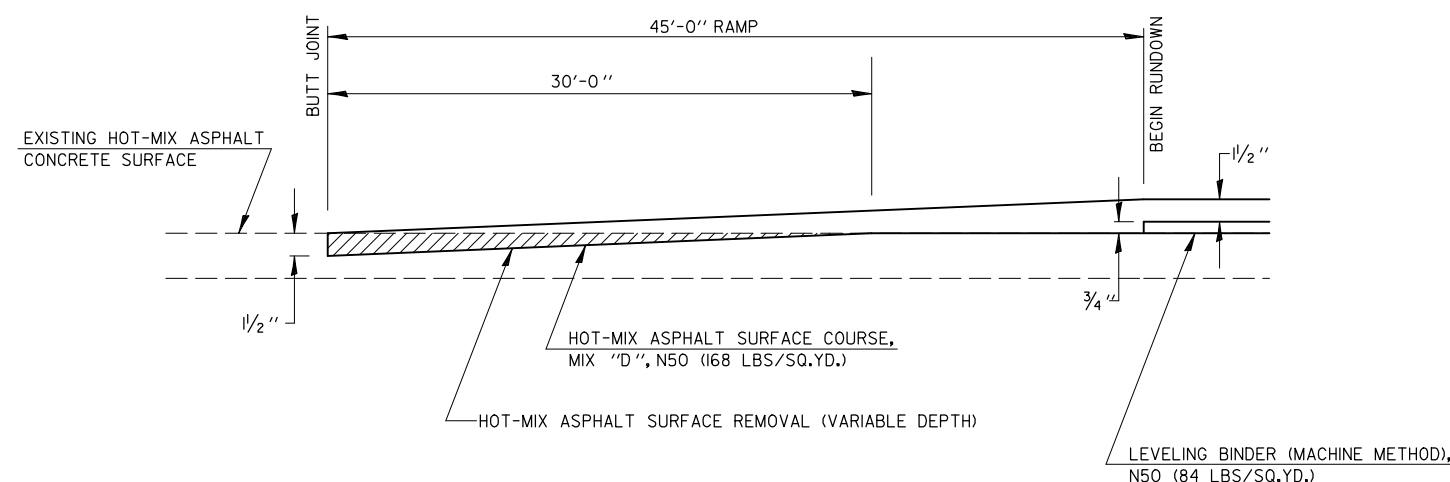


PLAN

NOTE: DOWELS AT 3'-0" INTERVALS OR AS DIRECTED BY THE ENGINEER.

NOTE: THE COST OF FURNISHING AND INSTALLING DOWEL BARS AND MORTAR FILLING SHALL BE INCLUDED IN THE CONTRACT UNIT PRICE PER SQ. FT. FOR CORRUGATED MEDIAN (DOWELLED)

DETAIL OF BUTT JOINT



HOT-MIX ASPHALT SURFACE REMOVAL (VARIABLE DEPTH) & TEMPORARY RAMPS

LOCATION	WIDTH FOOT	HOT-MIX ASPHALT SURFACE REMOVAL (VARIABLE DEPTH) SQ YD	RAMP LENGTH FOOT	TEMPORARY RAMP SQ YD
STAGE 1				
RT STA 48+50.50 TO STA 48+58.00	24.42		7.5	21
RT STA 51+40.10 TO STA 51+47.60	24.42		7.5	21
STAGE 2				
* LT STA 48+50.60 TO STA 48+58.10	19.67		7.5	17
* LT STA 51+40.10 TO STA 51+47.60	19.67		7.5	17
FINAL PHASE				
BUTT JOINT AREAS				
STA 43+70 TO STA 43+75	64	214	5	36
STA 56+25 TO STA 56+30	64	214	5	36
VARIABLE DEPTH MILLING AREAS				
STA 47+00 TO STA 48+58.93	60.17 - 44	975		
STA 51+39.32 TO STA 52+00	44 - 58.73	304		
TOTAL		1707		148

* OMIT TEMPORARY RAMP IN MEDIAN

CONSTRUCTION OF BUTT JOINTS SHALL BE INCLUDED IN HOT-MIX ASPHALT SURFACE REMOVAL (VARIABLE DEPTH)

STATION	HOT-MIX ASPHALT SURFACE REMOVAL VARIABLE DEPTH REMOVAL THICKNESS					
	LT SHLDR	22' LT	8' LT	8' RT	22' RT	RT SHLDR
STA 43+70	0.12	0.12	0.12	0.12	0.12	0.12
STA 44+00	0	0	0	0	0	0
STA 47+00	0	0	0	0	0	0
STA 47+50	0.11	0.11	0.09	0.09	0.11	0.11
STA 48+00	0.22	0.22	0.18	0.18	0.22	0.22
STA 48+48	-	0.19	0.19	0.19	0.19	-
STA 51+51	-	0.13	0.13	0.10	0.13	-
STA 52+00	0	0	0	0	0	0
STA 56+00	0	0	0	0	0	0
STA 56+30	0.12	0.12	0.12	0.12	0.12	0.12

CORRUGATED MEDIAN & BUTT JOINT DETAILS

FAI ROUTE 57
SECTION (15, 21-25HB-2)BR
DOUGLAS COUNTY

CUMMINS ENGINEERING CORPORATION

JOB #: 2114.1
FILE: 2114DETAILS
DATE: 2/27/07