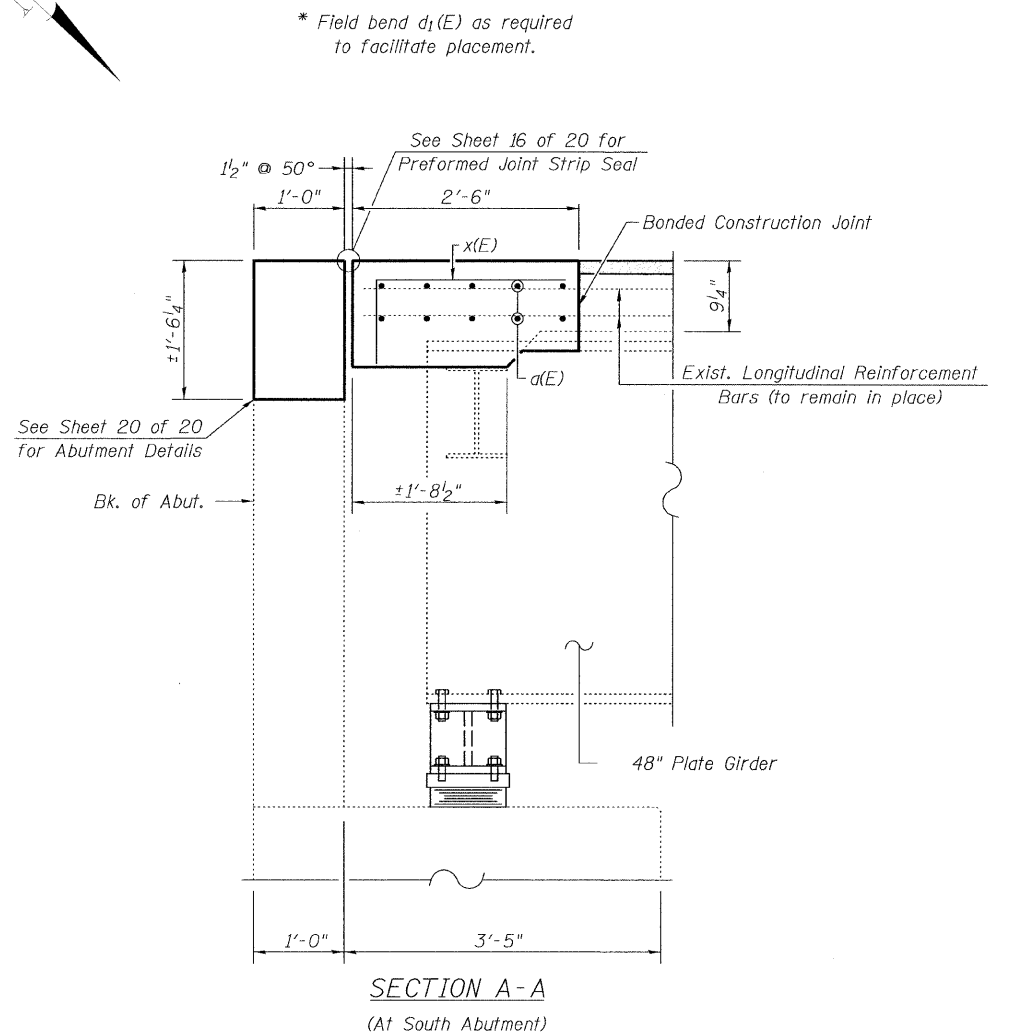
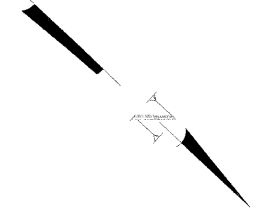



PROPOSED PARTIAL PLAN  
(South Abutment)



SUPERSTRUCTURE DETAILS FOR SOUTH ABUTMENT  
F.A.S. ROUTE 559 OVER KICKAPOO CREEK  
S.N. 054-3003

 <b>Allen Henderson &amp; Associates, Inc.</b> Civil and Structural Engineers Springfield, IL. 62703 Phone: (217)544-8033 IL. Design Firm No. 184-001907	SHEET NO. 9	F.A.S. RTE. 559	SECTION 09-00074-01-BR	COUNTY LOGAN	TOTAL SHEETS 22	SHEET NO. 11
	20 SHEETS	CONTRACT NO. 93511			FED. ROAD DIST. NO. _ ILLINOIS FED. AID PROJECT	