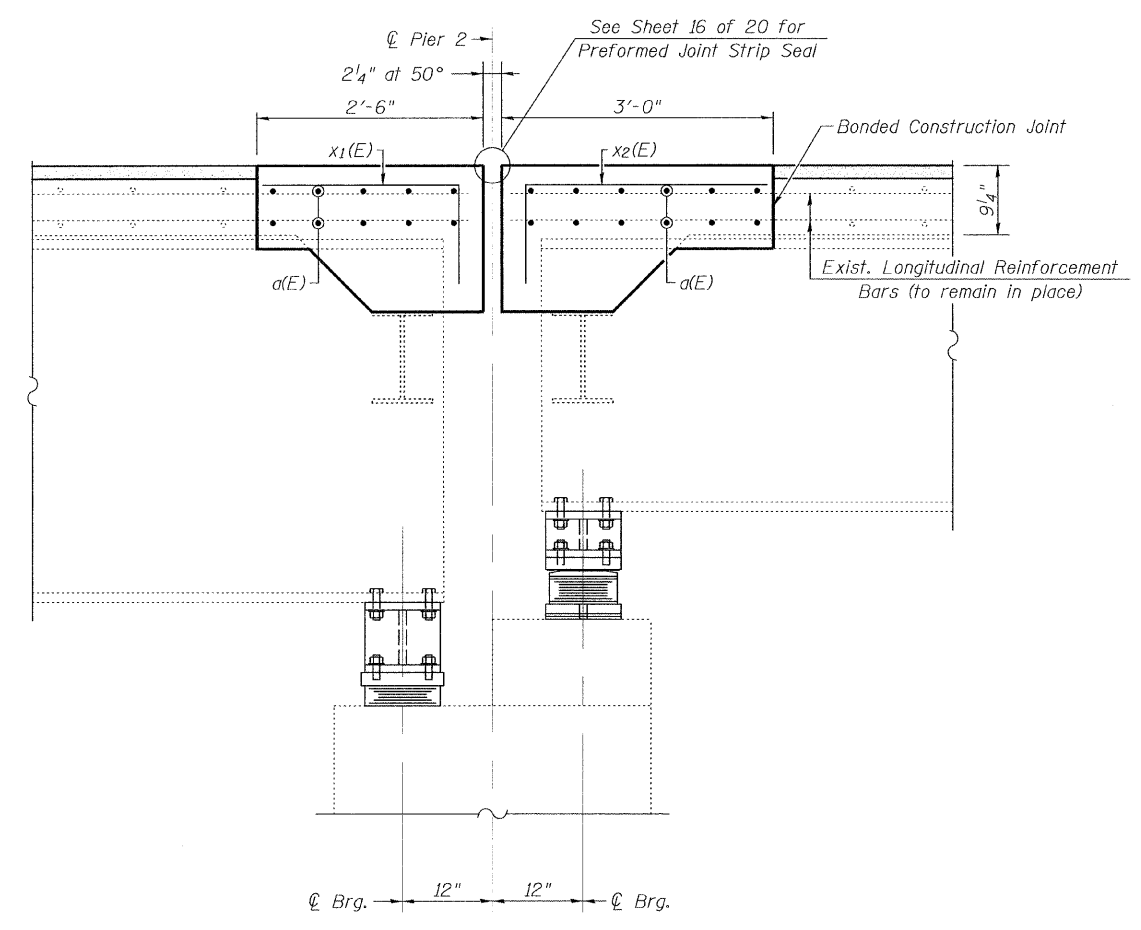


PROPOSED PARTIAL PLAN  
(Pier 2)



SECTION A-A

\* Tilt vertical leg of  $x_1(E)$  and  $x_2(E)$  bars as required to provide  $1\frac{1}{2}$ " clearance at bottom of proposed concrete.

SUPERSTRUCTURE DETAILS FOR PIER 2  
F.A.S. ROUTE 559 OVER KICKAPOO CREEK  
S.N. 054-3003



Allen Henderson & Associates, Inc.  
Civil and Structural Engineers Springfield, IL.  
62703 Phone: (217)544-8033 IL Design Firm  
No. 184-001907

SHEET NO. 11 20 SHEETS	F.A.S. RTE.	SECTION	COUNTY	TOTAL SHEETS	SHEET NO.
	559	09-00074-01-BR	LOGAN	22	13
CONTRACT NO. 93511					
FED. ROAD DIST. NO. _ ILLINOIS FED. AID PROJECT					