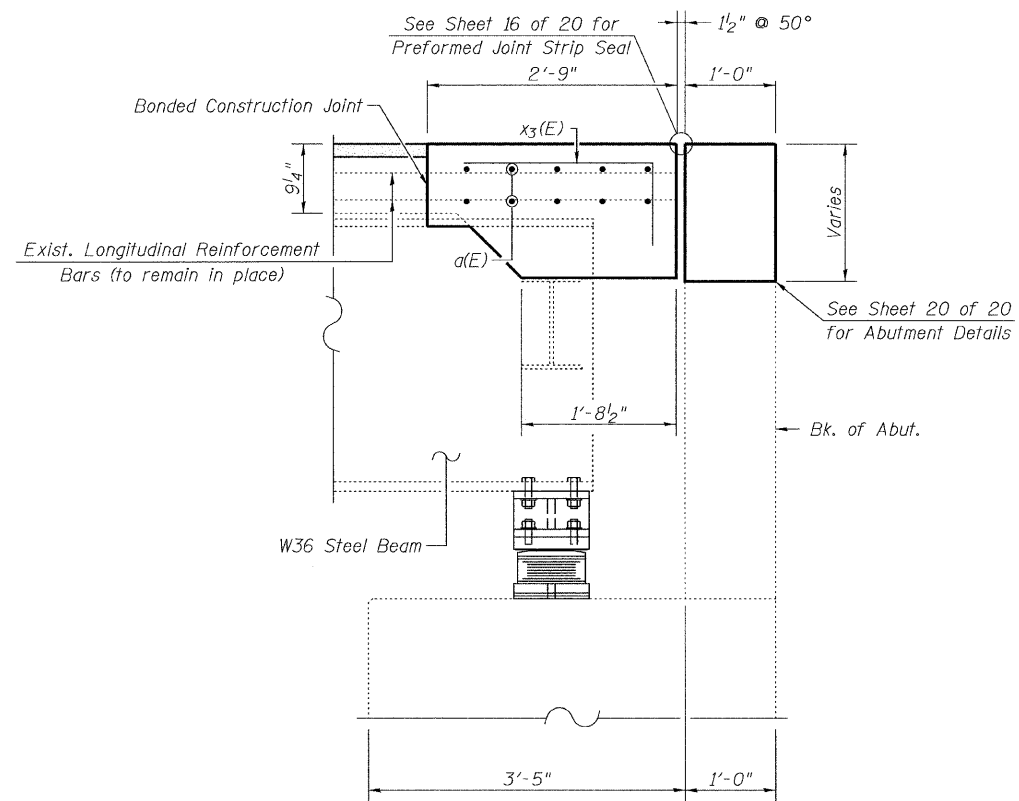



PROPOSED PARTIAL PLAN
(North Abutment)



SECTION A-A
(At North Abutment)

* Tilt vertical leg of $x_3(E)$ bar as required to provide $1\frac{1}{2}$ " clearance at bottom of slab.

SUPERSTRUCTURE DETAILS FOR NORTH ABUTMENT
F.A.S. ROUTE 559 OVER KICKAPOO CREEK
S.N. 054-3003

 Allen Henderson & Associates, Inc. Civil and Structural Engineers Springfield, IL. 62703 Phone: (217)544-8033 IL Design Firm No. 184-001907	SHEET NO. 13	F.A.S. RTE. 559	SECTION 09-00074-01-BR	COUNTY LOGAN	TOTAL SHEETS 22	SHEET NO. 15
	20 SHEETS	CONTRACT NO. 93511				
	FED. ROAD DIST. NO. _ ILLINOIS FED. AID PROJECT					