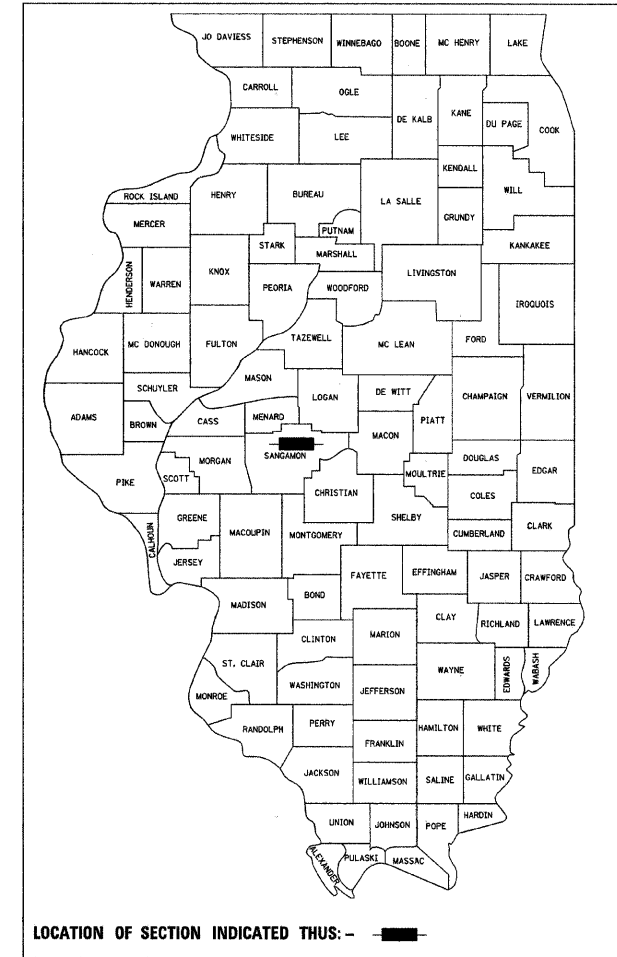


F.A.P. RTE.	SECTION	COUNTY	TOTAL SHEETS	SHEET NO.
666	09-00015-00 PV	SANGAMON	25	1
FED. ROAD DIST. NO.		ILLINOIS	CONTRACT NO. 93513	
* VILLAGE OF SHERMAN				

INDEX OF SHEETS

- 1 COVER SHEET
- 2 SPECIFICATIONS/GENERAL NOTES AND MISC DETAILS
- 3-4 TYPICAL SECTIONS
- 5 SUMMARY OF QUANTITIES
- 6 SCHEDULE OF QUANTITIES
- 7 VILLAGE CENTER DRIVE INTERSECTION PLAN PROFILE
- 8 BUSINESS LOOP 55 PLAN SHEET
- 9 LAYOUT AND GRADING PLAN
- 10 STRIPING PLAN
- 11 EROSION PLAN
- 12 TRAFFIC SIGNAL SCHEDULE
- 13 SIGNAL PLAN
- 14 CABLE PLAN
- 15-16 MAINTENANCE OF TRAFFIC PLAN SHEET
- 17-25 CROSS SECTION SHEETS

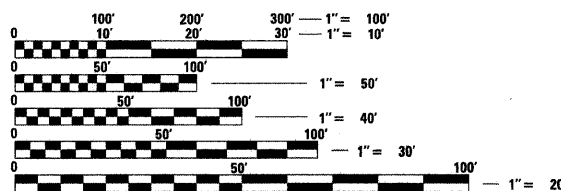
STATE OF ILLINOIS
DEPARTMENT OF TRANSPORTATION
DIVISION OF LOCAL ROADS
PROPOSED
IMPROVEMENT PLANS
AMERICAN RECOVERY AND REINVESTMENT ACT
FAP: ROUTE 666
SECTION: 09-00015-00 PV
PROJECT: ARA - 0167(059)
INTERSECTION CONSTRUCTION
(BUSINESS LOOP 55 AND VILLAGE CENTER DRIVE)
SHERMAN, IL
SANGAMON COUNTY
C-96-210-10



LIST OF STANDARDS

280001-05	606001-04	720016-02	877011-04
420001-07	606301-04	780001-02	878001-03
602301-02	701101-02	781001-03	880006-01
602306-02	701422-02	805001-01	BLR 21-8
602401-02	701701-06	857001-01	
602701-02	701901-01	862001-01	
604006-04	720001-01	873001-02	

SCALES:

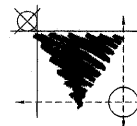


FULL SIZE PLANS HAVE BEEN PREPARED USING STANDARD ENGINEERING SCALES. REDUCED SIZED PLANS WILL NOT CONFORM TO STANDARD SCALES. IN MAKING MEASUREMENTS ON REDUCED PLANS, THE ABOVE SCALES MAY BE USED.

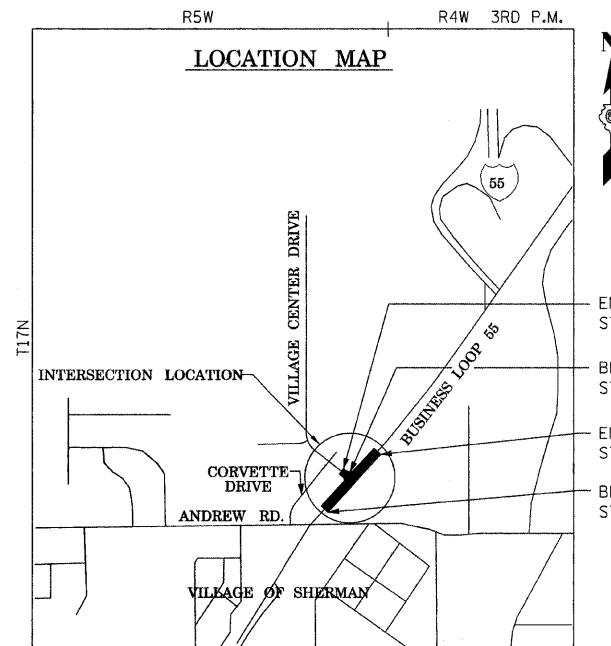
J.U.L.I.E.
 JOINT UTILITY LOCATION INFORMATION FOR EXCAVATION
 1-800-892-0123
 OR 811

AT&T COMMUNICATIONS
 CARL DONAHUE/OUTSIDE PLANT ENGINEER
 866 ROCK CREEK ROAD
 PLANO, IL 60545
 (630) 522-4677

CONTRACT NO. 93513



vasconcelles
 engineering corporation
 2417 west white oaks drive
 springfield, il 62704
 phone (217)698-3114



- END VILLAGE CENTER DRIVE STA. 2+48.50
- BEGIN VILLAGE CENTER DRIVE STA. 1+32.50
- END BL-55 IMPROVEMENT STA. 286+35
- BEGIN BL-55 IMPROVEMENT STA. 275+70

LENGTH OF IMPROVEMENTS:
 VILLAGE CENTER DRIVE = 116.00 FT = 0.022 MI.
 BL-55 = 1,065.00 FT = 0.202 MI.
 NET LENGTH OF PROJECT = 1,181.00 FT = 0.224 MI.

DESIGN CLASS:
 BL-55 (FAP 666) PRINCIPLE ARTERIAL; ADT 12,750 (29); DHV 1766; 45 MPH
 VILLAGE CENTER DRIVE (FAU 808) COLLECTOR; ADT 9720 (29) DESIGN SPEED - 30 MPH



SEAL
 LICENSE EXPIRES: 11/30/11

STATE OF ILLINOIS DEPARTMENT OF TRANSPORTATION
DIVISION OF HIGHWAYS

Approved: December 1, 2009
[Signature]
 Village President, Village of Sherman

Passed: Nov 30, 2009
[Signature]
 District 6 Engineer of Local Roads & Streets

Passed: November 30, 2009
[Signature]
 District 6 Engineer of Construction

Released for Bid Based on Limited Review: Nov 30, 2009
[Signature]
 Deputy Director of Highways, Region 4 Engineer

[Signature]
 MARK T. VASCONCELLES
 DATE: 11/23/2009