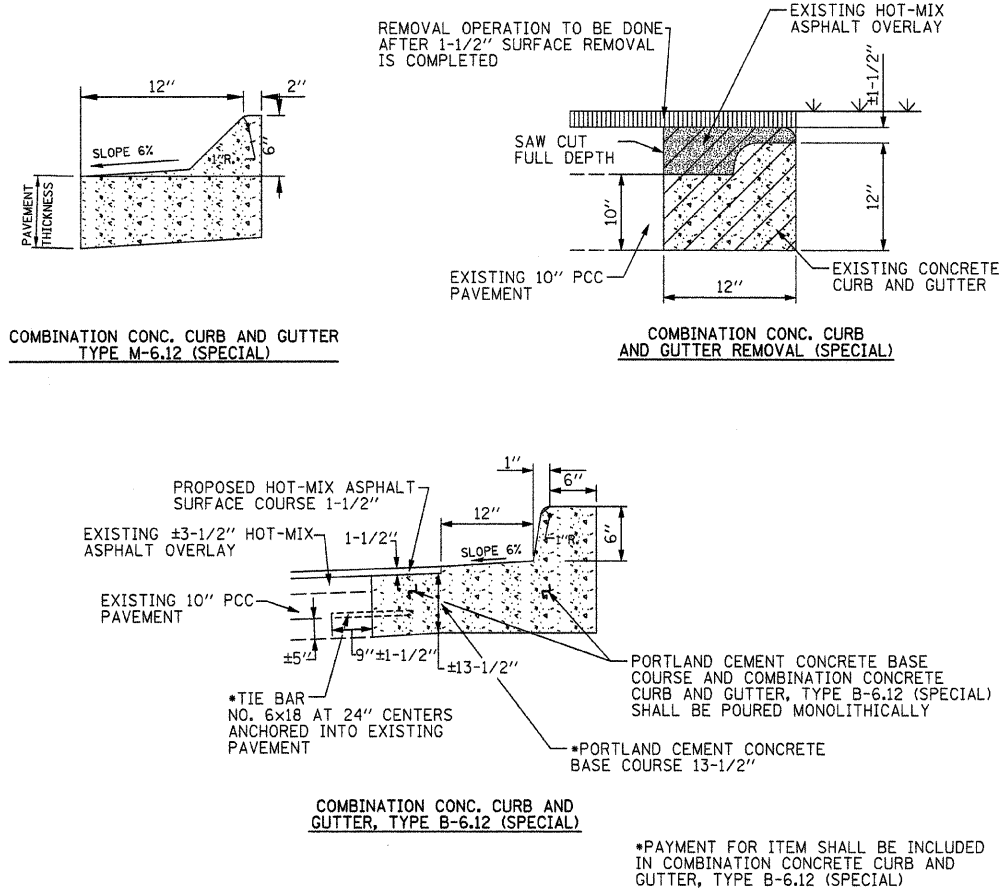


MISCELLANEOUS DETAILS



SPECIFICATIONS/GENERAL NOTES

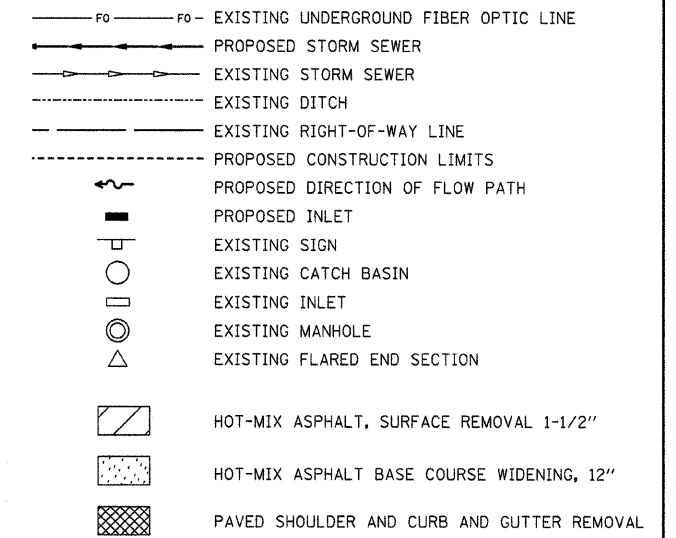
SPECIFICATIONS

SPECIFICATIONS SHALL BE THOSE OF THE STATE OF ILLINOIS DEPARTMENT OF TRANSPORTATION "STANDARD SPECIFICATIONS FOR ROAD AND BRIDGE CONSTRUCTION" ADOPTED JAN. 1, 2007, INCLUDING ALL REVISIONS CURRENT AT THE DATE OF BIDDING.

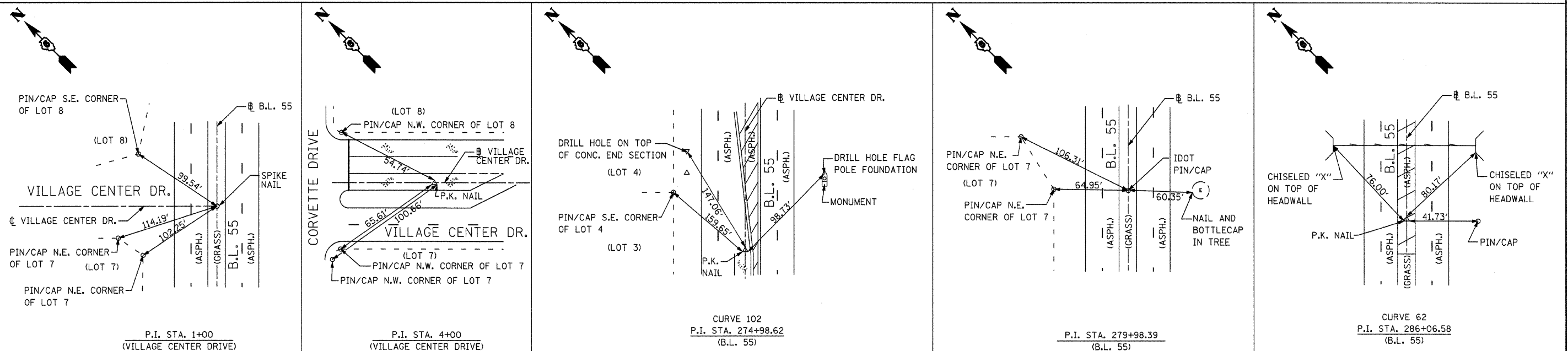
GENERAL NOTES

- 1) THE EXISTENCE AND LOCATION OF EXISTING UNDERGROUND FACILITIES SHOWN ON THESE PLANS WERE OBTAINED BY FIELD INVESTIGATION AND SEARCH OF AVAILABLE RECORDS TO THE BEST OF OUR KNOWLEDGE. THE CONTRACTOR IS REQUIRED TO TAKE PRECAUTIONARY MEASURES TO PROTECT ANY EXISTING FACILITY SHOWN HEREON AND ANY OTHER WHICH IS NOT OF RECORD OR NOT SHOWN ON THESE PLANS. IT SHALL BE THE CONTRACTOR'S RESPONSIBILITY TO ASCERTAIN THEIR EXACT LOCATION FROM THE UTILITY COMPANIES AND BY FIELD INSPECTION. (J.U.L.I.E.)
- 2) EXCESS DIRT FROM SEWER AND EARTHWORK OPERATIONS OR UNSUITABLE FILL MATERIAL MUST BE DISTRIBUTED ON SITE AS DIRECTED BY THE ENGINEER.
- 3) THE CONTRACTOR SHALL MAINTAIN ALL TEMPORARY EROSION CONTROL SHOWN ON THE PLANS UNTIL PERMANENT VEGETATION OR PAVEMENT HAS BEEN ESTABLISHED AND ACCEPTED BY THE VILLAGE OF SHERMAN.
- 4) ALL CONSTRUCTION STAKEOUT AND INSPECTION SHALL BE PROVIDED BY THE ENGINEER.
- 5) WHERE SECTION STONES OR PROPERTY MARKERS ARE ENCOUNTERED, THE ENGINEER SHALL BE NOTIFIED BEFORE SUCH STONES OR MARKERS ARE REMOVED, THE CONTRACTOR SHALL PROTECT AND PRESERVE ALL PROPERTY MARKERS UNTIL AN OWNER OR AUTHORIZED SURVEYOR HAS WITNESSED OR REFERENCED THEIR LOCATION.

LEGEND



CENTERLINE MONUMENT TIES



FILE NAME =	USER NAME = #USER#	DESIGNED - R.H.D.	REVISED -	<b>STATE OF ILLINOIS DEPARTMENT OF TRANSPORTATION</b>	<b>SPECIFICATIONS/GENERAL NOTES AND MISCELLANEOUS DETAILS INTERSECTION CONSTRUCTION (BL-55 &amp; VILLAGE CTR DR), SHERMAN, IL</b>	F.A.P. RTE. 666	SECTION 09-00015-00PV	COUNTY SANGAMON	TOTAL SHEETS 25	SHEET NO. 2		
#FILE#	PLOT SCALE = #SCALE#	DRAWN - K.M.S.	REVISED -			SCALE:	SHEET NO. 2 OF 25 SHEETS	STA. TO STA.	ILLINOIS FED. AID PROJECT			
	PLOT DATE = #DATE#	CHECKED - T.T.P.	REVISED -									
		DATE - 11/20/09	REVISED -									