

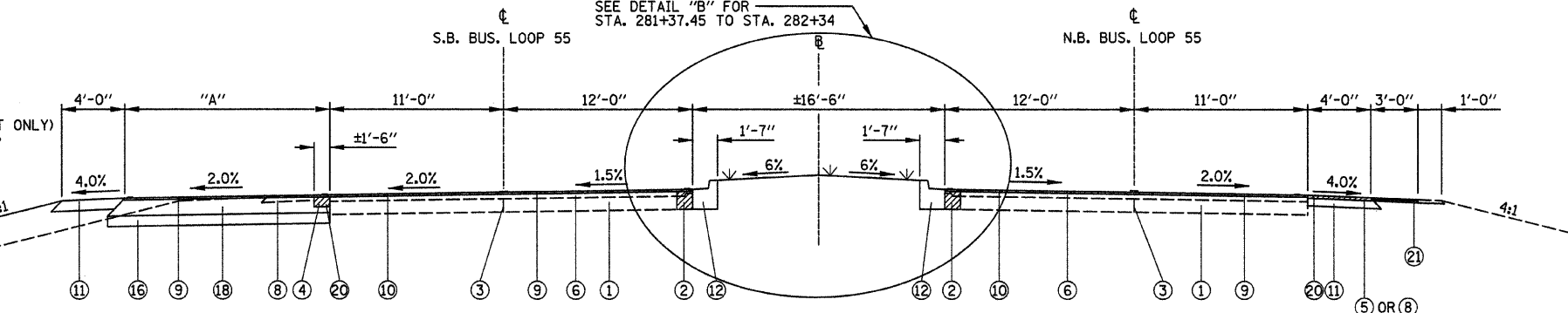
** 279+44.24 TO 279+98.31 WIDENING WIDTH VARIES 1'-12'

PROPOSED TYPICAL SECTION BUS. LOOP 55

279+44.24 TO 281+37.45

* PROPOSED PAVED SHOULDER REMOVAL (±4' WIDTH) 279+82 TO 280+04.5

OMIT SHOULDER PAVEMENT (LT ONLY) FROM 281+37.45 TO 281+72.26 (VILLAGE CENTER DRIVE)



PROPOSED TYPICAL SECTION BUS. LOOP 55

281+37.45 TO 285+54.19

* PROPOSED PAVED SHOULDER REMOVAL (±7' WIDTH) 283+45 TO 284+71.5

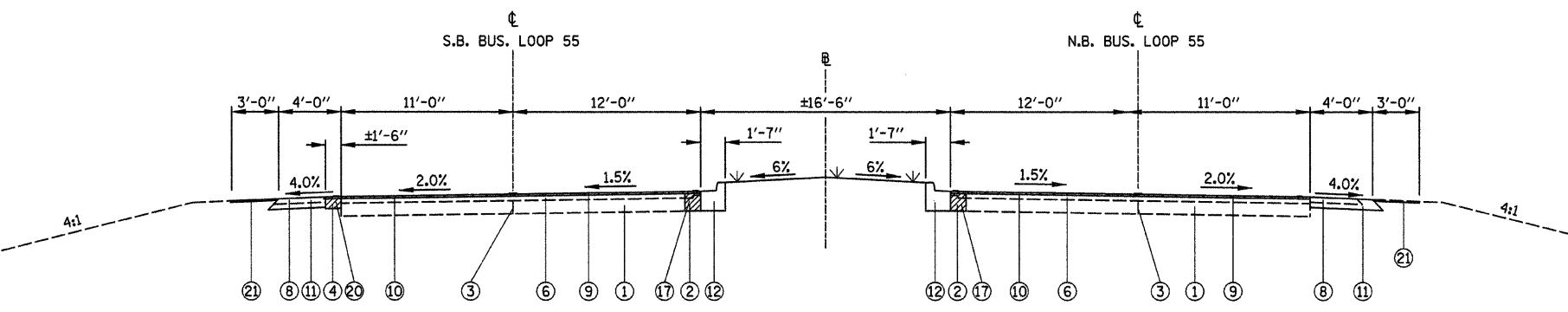
STA. TO STA.	"A"
281+37.45 - 283+54.19	12'-0"
283+54.19 - 285+54.29	12' TO 1'

LEGEND

- ① EXISTING CONCRETE PAVEMENT 10"
- ② EXISTING CONCRETE CURB AND GUTTER
- ③ EXISTING LONGITUDINAL METAL JOINT
- ④ EXISTING HOT-MIX ASPHALT SHOULDER, 8"
- ⑤ EXISTING HOT-MIX ASPHALT SHOULDER, 2 1/4"
- ⑥ EXISTING HOT-MIX ASPHALT SURFACE 5"
- ⑦ EXISTING HOT-MIX ASPHALT BINDER AND SURFACE, 12"
- ⑧ EXISTING AGGREGATE SHOULDER
- ⑨ PROPOSED HOT-MIX ASPHALT SURFACE COURSE MIX "D", N70, 1 1/2"
- ⑩ PROPOSED HOT-MIX ASPHALT SURFACE REMOVAL 1 1/2"
- ⑪ PROPOSED HOT-MIX ASPHALT SHOULDERS, 8"
- ⑫ PROPOSED COMBINATION CONCRETE CURB AND GUTTER TYPE B-6.12 (SPECIAL)
- ⑬ PROPOSED COMBINATION CONCRETE CURB AND GUTTER TYPE B-6.18
- ⑭ PROPOSED COMBINATION CONCRETE CURB AND GUTTER TYPE M-6.12 (SPECIAL)
- ⑮ PROPOSED CONCRETE MEDIAN SURFACE 4"
- ⑯ PROPOSED SUB-BASE GRANULAR MATERIAL, TYPE A, 8"
- ⑰ PROPOSED COMBINATION CURB AND GUTTER REMOVAL (SPECIAL)
- ⑱ PROPOSED HOT-MIX ASPHALT BASE COURSE WIDENING, 12"
- ⑲ PROPOSED HOT-MIX ASPHALT BASE COURSE, 9"
- ⑳ PROPOSED PAVED SHOULDER REMOVAL
- ㉑ PROPOSED AGGREGATE SHOULDER TYPE B, 1"
- ㉒ PROPOSED SUB-BASE GRANULAR MATERIAL, TYPE A, 12"
- ㉓ PROPOSED SUB BASE GRANULAR MATERIAL, TYPE C

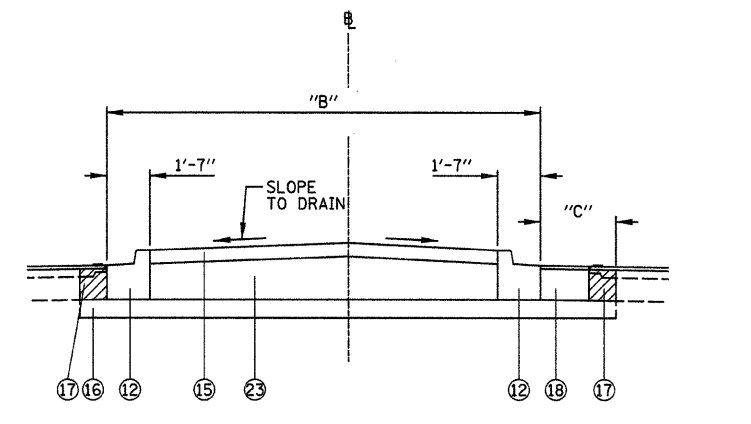
HOT-MIX ASPHALT MIXTURE REQUIREMENTS			
ITEM	AGGREGATE COMPOSITION	ASPHALT GRADE	DESIGN AIR VOIDS
HMA BASE CSE & WIDENING	IL-19.0	PG 64-22	4.0%±N70
HMA LEVEL BINDER (MM)	IL-9.5 OR 12.5	PG 64-22	4.0%±N70
HMA SURFACE CSE	IL-9.5 OR 12.5 MIX "D"	PG 64-22	4.0%±N70
HMA SHOULDERS	OTHER (BAM)	PG 58-22	2.0%±N30

HOT-MIX ASPHALT QUANTITIES BASED ON 112 LB/SQ.YD./INCH



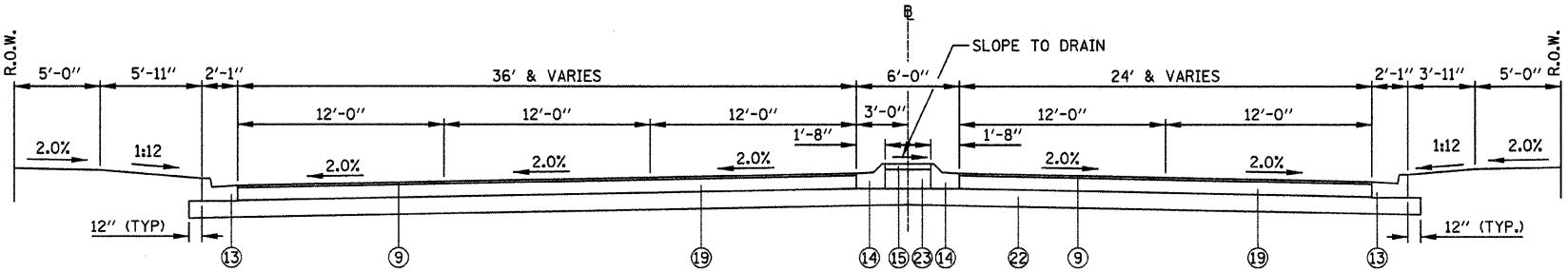
PROPOSED TYPICAL SECTION BUS. LOOP 55

285+54.19 TO 285+82



"B" = 0' TAPERING TO ±16'-6"
"C" = 15' TAPERING TO 1'

DETAIL "B"
STA. 281+37.45 TO STA. 282+34



PROPOSED CROSS SECTION (VILLAGE CENTER DRIVE)

FILE NAME =	USER NAME = #USER#	DESIGNED - M.T.V.	REVISED -	STATE OF ILLINOIS DEPARTMENT OF TRANSPORTATION	TYPICAL SECTIONS			F.A.P. R.T.E. 666	SECTION 09-00015-00 PV	COUNTY SANGAMON	TOTAL SHEETS 25	SHEET NO. 4
#FILEL#	PLOT SCALE = #SCALE#	DRAWN - K.M.S.	REVISED -		INTERSECTION CONSTRUCTION (BL-55 & VILLAGE CTR DR), SHERMAN, IL			CONTRACT NO. 33513				
	PLOT DATE = #DATE#	CHECKED - T.T.P.	REVISED -		SCALE: SHEET NO. 4 OF 25 SHEETS STA. TO STA.			ILLINOIS FED. AID PROJECT				
		DATE - 11/20/09	REVISED -									