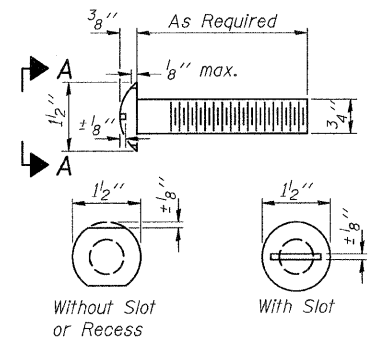
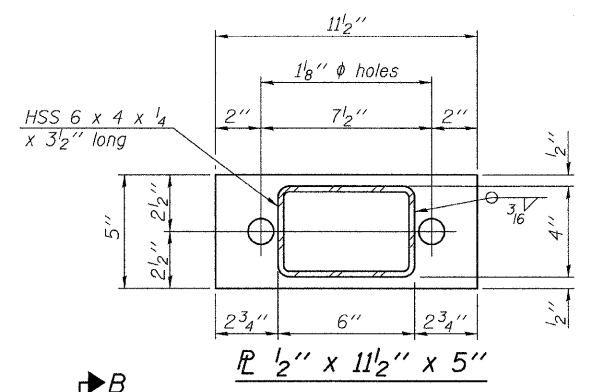


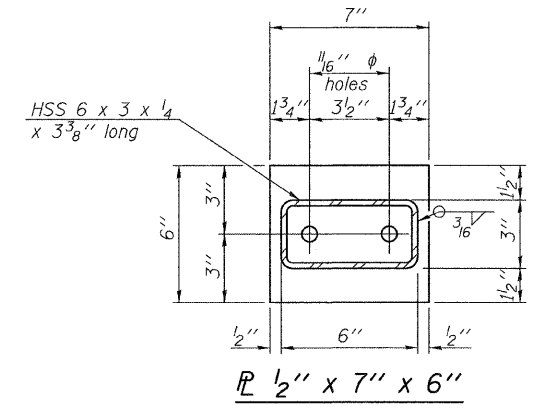
FOR RAIL POST SPACING SEE SH.#5 OF 8



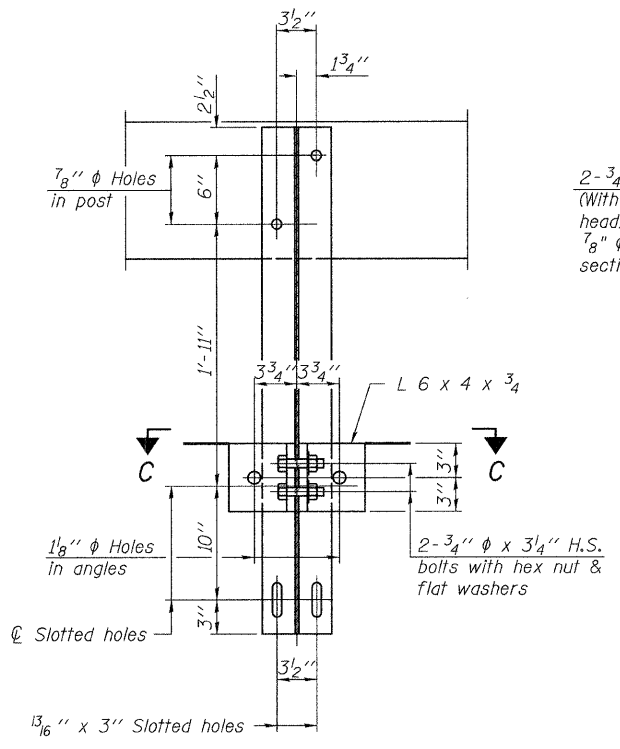
VIEW A-A
ROUND HEAD BOLT



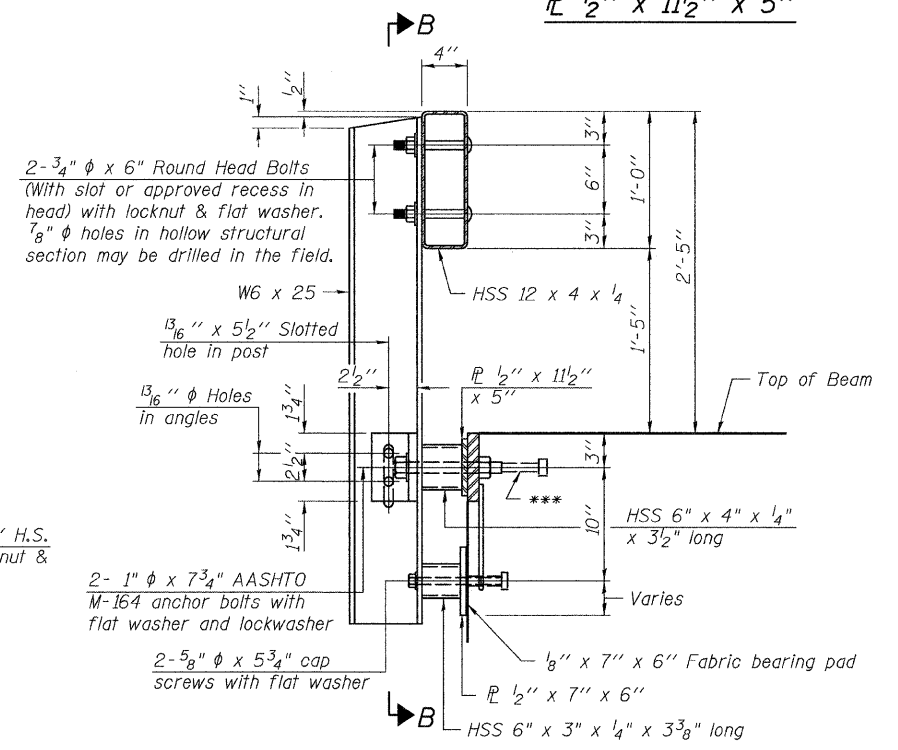
PL 1/2" x 11 1/2" x 5"



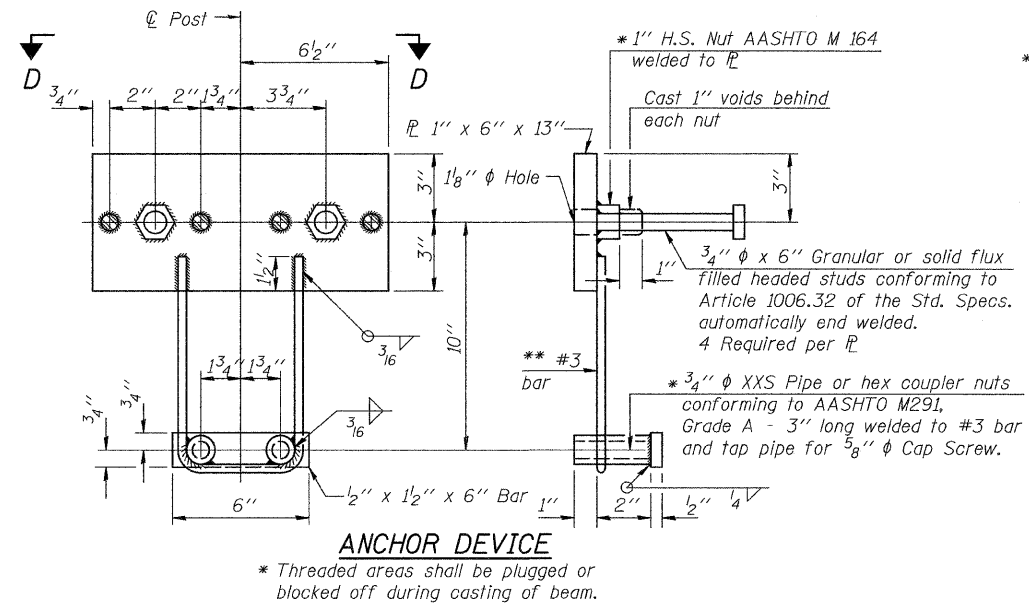
PL 1/2" x 7" x 6"



SECTION B-B



SECTION AT RAILING POST



ANCHOR DEVICE

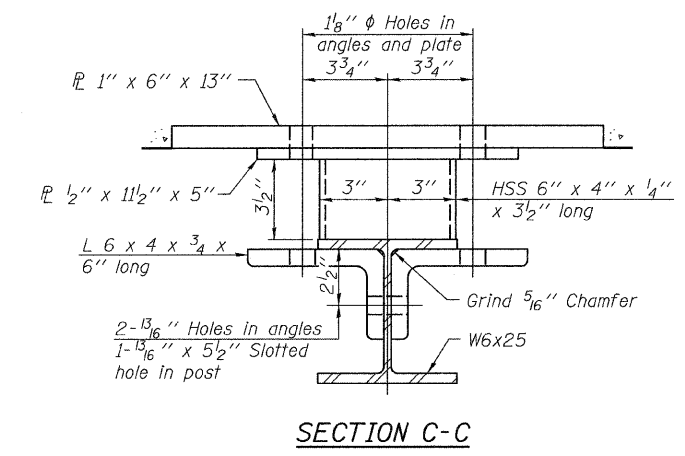
NOTES

All field drilled holes shall be coated with an approved zinc rich paint before erection.

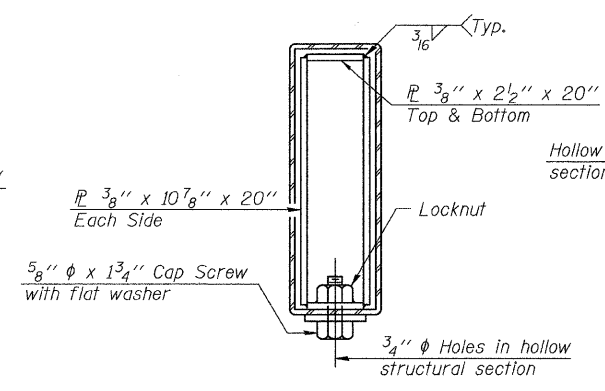
For multi-span bridges, sufficient 1/4" x 6" x 1'-2" galvanized steel shims shall be provided to align rail between adjacent spans. Cost included with Steel Railing, Type S-1.

All steel rail elements shall be galvanized according to Article 509.05 of the Standard Specifications.

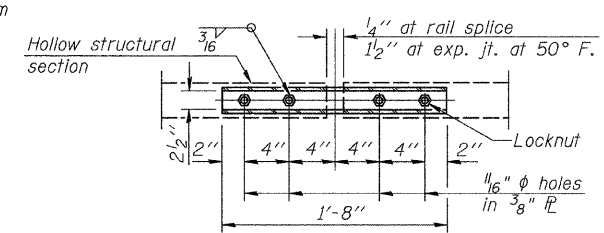
*** The studs of the anchor devices shall be placed below the top reinforcement bars and the outermost longitudinal reinforcement bar shall be placed directly above the studs of the rail post anchor device.



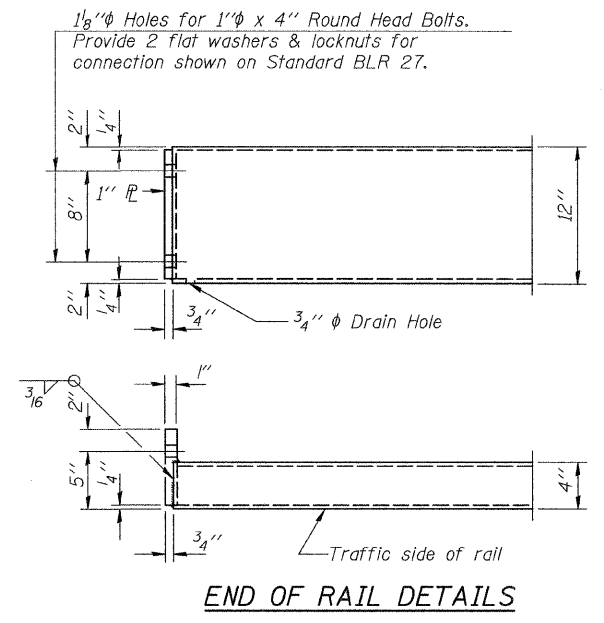
SECTION C-C



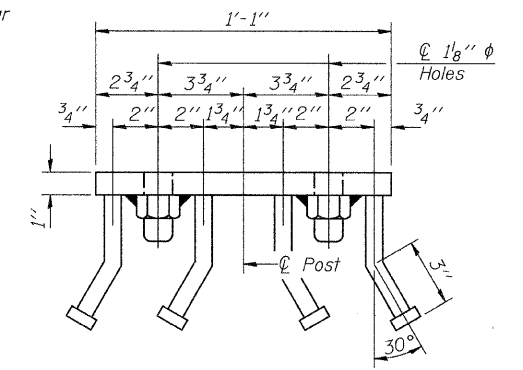
SECTIONS AT RAIL SPLICE



PLAN-BOTT. SPLICE PL TYPICAL



END OF RAIL DETAILS



VIEW D-D

BILL OF MATERIAL

Item	Unit	Quantity
Steel Railing, Type S-1	FOOT	199

STEEL RAILING, TYPE S-1
COUNTY HIGHWAY 12
OVER MILLER CREEK
SECTION 00-00063-00-BR
CASS COUNTY
STATION 256+92.00