

Chain G65W contains:
8001 CUR G65W1 CUR G65W2 CUR G65W3 CUR G65W4 8065

Beginning chain G65W description

Point 8001 N 1,091,862.2441 E 2,433,238.5646 Sta 13+38.92

Course from 8001 to PC G65W1 N 0° 59' 37.68" W Dist 2,000.0000

Curve Data

Curve G65W1
P.I. Station 34+38.96 N 1,093,961.9655 E 2,433,202.1411
Delta = 1° 30' 58.45" (LT)
Degree = 0° 45' 28.37"
Tangent = 100.0372
Length = 200.0628
Radius = 7,560.0000
External = 0.6618
Long Chord = 200.0570
Mid. Ord. = 0.6618
P.C. Station 33+38.92 N 1,093,861.9433 E 2,433,203.8762
P.T. Station 35+38.98 N 1,094,061.9068 E 2,433,197.7601
C.C. N 1,093,730.8210 E 2,425,645.0134
Back = N 0° 59' 37.68" W
Ahead = N 2° 30' 36.14" W
Chord Bear = N 1° 45' 06.91" W

Curve Data

Curve G65W2
P.I. Station 36+39.10 N 1,094,161.9280 E 2,433,193.3755
Delta = 1° 44' 45.87" (RT)
Degree = 0° 52' 19.49"
Tangent = 100.1173
Length = 200.2190
Radius = 6,570.0000
External = 0.7628
Long Chord = 200.2113
Mid. Ord. = 0.7627
P.C. Station 35+38.98 N 1,094,061.9068 E 2,433,197.7601
P.T. Station 37+39.20 N 1,094,262.0363 E 2,433,192.0406
C.C. N 1,094,349.6360 E 2,439,761.4566
Back = N 2° 30' 36.14" W
Ahead = N 0° 45' 50.27" W
Chord Bear = N 1° 38' 13.20" W

Course from PT G65W2 to PC G65W3 N 0° 45' 50.27" W Dist 1,520.3380

Curve Data

Curve G65W3
P.I. Station 53+59.69 N 1,095,882.3750 E 2,433,170.4342
Delta = 3° 26' 05.36" (RT)
Degree = 1° 42' 55.59"
Tangent = 100.1447
Length = 200.2295
Radius = 3,340.0000
External = 1.5010
Long Chord = 200.1995
Mid. Ord. = 1.5003
P.C. Station 52+59.54 N 1,095,782.2392 E 2,433,171.7695
P.T. Station 54+59.77 N 1,095,982.4110 E 2,433,175.1008
C.C. N 1,095,826.7724 E 2,436,511.4726
Back = N 0° 45' 50.27" W
Ahead = N 2° 40' 15.09" E
Chord Bear = N 0° 57' 12.41" E

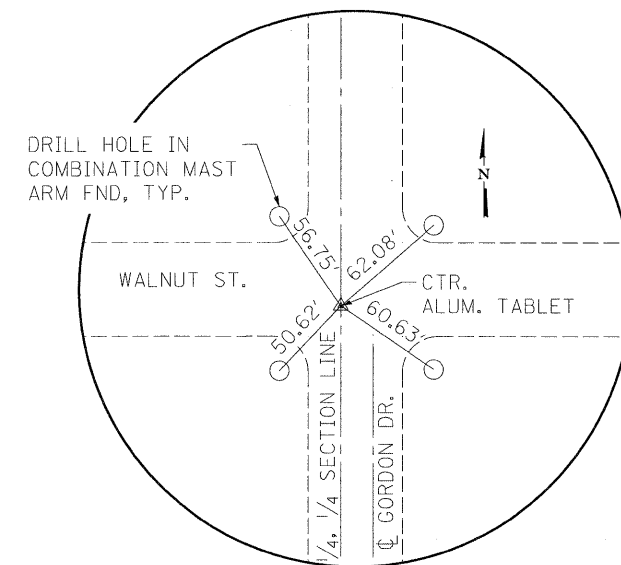
Curve Data

Curve G65W4
P.I. Station 55+59.92 N 1,096,082.4469 E 2,433,179.7674
Delta = 3° 26' 05.36" (LT)
Degree = 1° 42' 55.59"
Tangent = 100.1447
Length = 200.2295
Radius = 3,340.0000
External = 1.5010
Long Chord = 200.1995
Mid. Ord. = 1.5003
P.C. Station 54+59.77 N 1,095,982.4110 E 2,433,175.1008
P.T. Station 56+60.00 N 1,096,182.5828 E 2,433,178.4321
C.C. N 1,096,138.0496 E 2,429,838.7290
Back = N 2° 40' 15.09" E
Ahead = N 0° 45' 50.27" W
Chord Bear = N 0° 57' 12.41" E

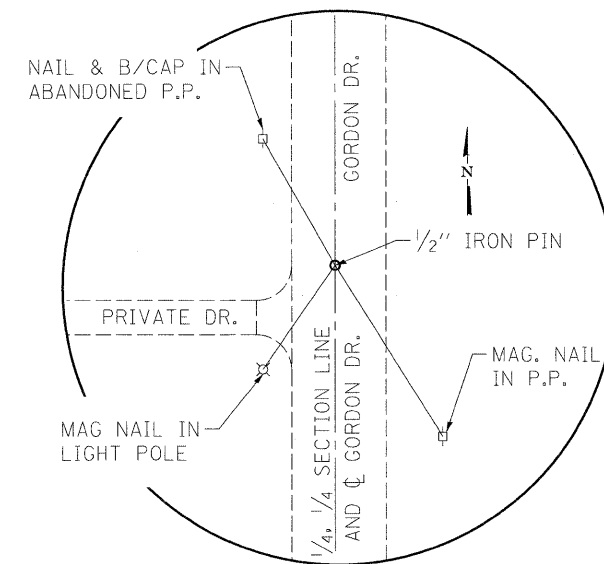
Course from PT G65W4 to 8065 N 0° 45' 50.27" W Dist 340.0000

Point 8065 N 1,096,522.5525 E 2,433,173.8988 Sta 60+00.00

Ending chain G65W description



STA. 60+00.00, 5.50' LT
N.W. CORNER E 1/2, S.W. 1/4,
SEC. 8, T14N, R5W
N - 1,096,522.4792
E - 2,433,168.3993



P.C. STA. 33+38.92
N.W. CORNER E 1/2, N.W. 1/4,
SEC. 17, T14N, R5W
N - 1,093,861.9433
E - 2,433,203.8762



FILE NAME = J:\06167\DRAWINGS\06167-shr-ATB.dgn	USER NAME = frankv	DESIGNED - WCB	REVISED -
G&B PROJECT: 06167	PLOT SCALE = 50.0000' / in.	DRAWN - FAV	REVISED -
PLOT DRIVER = V6L.TDS700.PS.LOCAL.IDDT.plt	PLOT DATE = 11/19/2009	CHECKED - WCB	REVISED -
		DATE - 10/07/09	REVISED -

VILLAGE OF CHATHAM
GORDON DRIVE IMPROVEMENTS

ALIGNMENT & TIES

SCALE: SHEET NO. 1 OF 1 SHEETS STA. TO STA.

F.A.U. RTE. 8153	SECTION 09-00028-01-DR	COUNTY SANGAMON	TOTAL SHEETS 32	SHEET NO. 6
FED. ROAD DIST. NO. ILLINOIS FED. AID PROJECT ARA-5082(009)			CONTRACT NO. 93516	