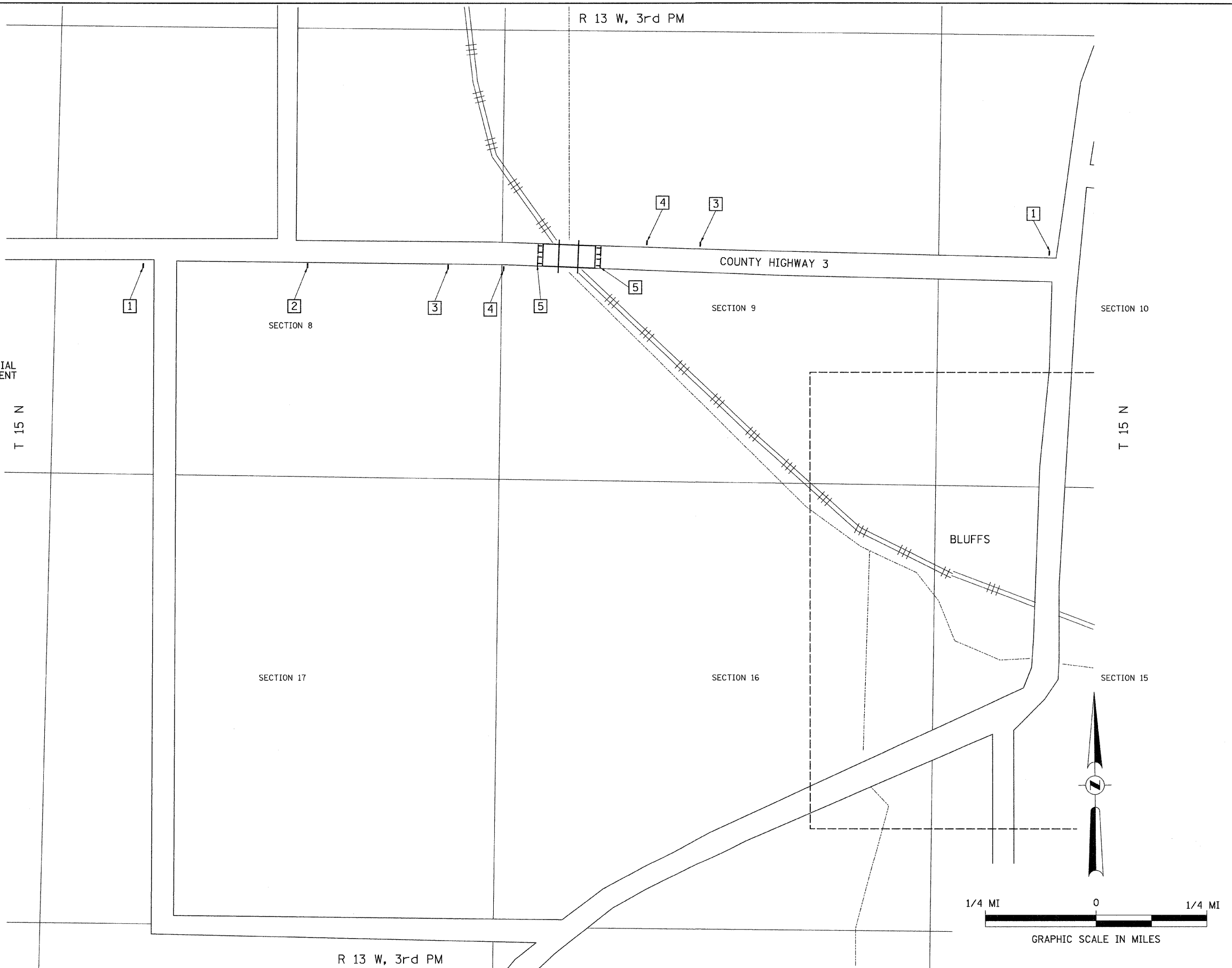


NOTE:
 A.R.R.A. SIGNING SHALL BE DONE IN ACCORDANCE
 WITH BUREAU OF DESIGN AND ENVIRONMENT SPECIAL
 PROVISION "AMERICAN RECOVERY AND REINVESTMENT
 ACT SIGNING." SEE SPECIAL PROVISIONS.

- 1 ROAD CLOSED
1 MILE AHEAD
LOCAL TRAFFIC ONLY
R11-3
- 2 ROAD CLOSED
3/4 MILE AHEAD
LOCAL TRAFFIC ONLY
R11-3
- 3 ROAD CLOSED
AHEAD
ROAD CLOSED
AHEAD
W20-3
- 4 ROAD CLOSED
500 FT
ROAD CLOSED
500 FT
W20-3
- 5 TYPE III BARRICADES

SEE STANDARD BLR 21
 AND SPECIAL PROVISIONS



FILE NAME = V:\Bridge\2730-Scott\2730\001.dgn	USER NAME = othomas	DESIGNED -	REVISED -	SCOTT COUNTY COUNTY HIGHWAY 3 OVER WOLF RUN CREEK	TRAFFIC CONTROL PLAN			F.A.S. RTE.	SECTION	COUNTY	TOTAL SHEETS	SHEET NO.
		DRAWN -	REVISED -		SCALE: NONE	SHEET NO. 1 OF 1 SHEETS	STA. 132+72.00 TO STA. 134+02.00	605	09-00006-02-BR	SCOTT	10	4
		CHECKED -	REVISED -					CONTRACT NO. 09 3 5 1 9				
		DATE -	REVISED -									

FED. ROAD DIST. NO. 7 [ILLINOIS] FED. AID PROJECT ARA-0605(107)