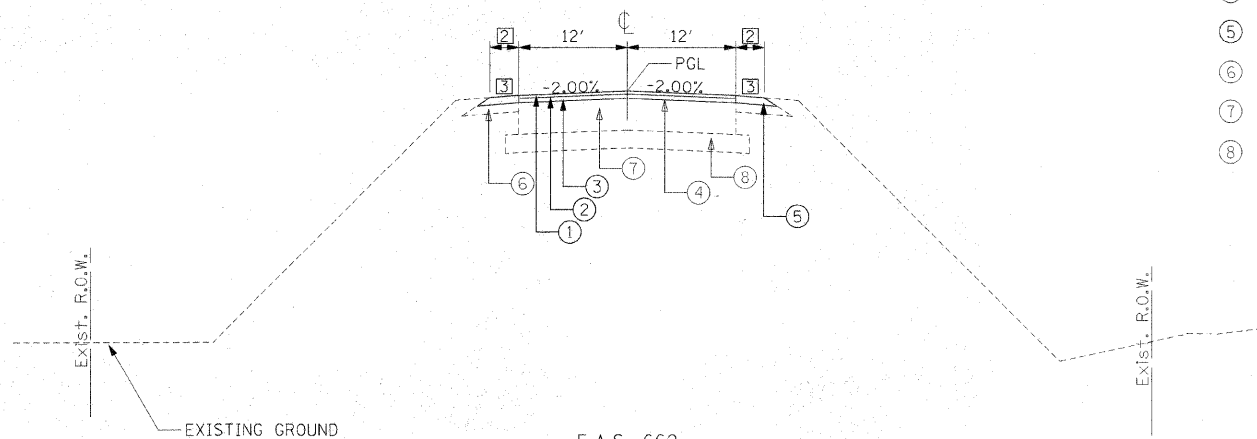
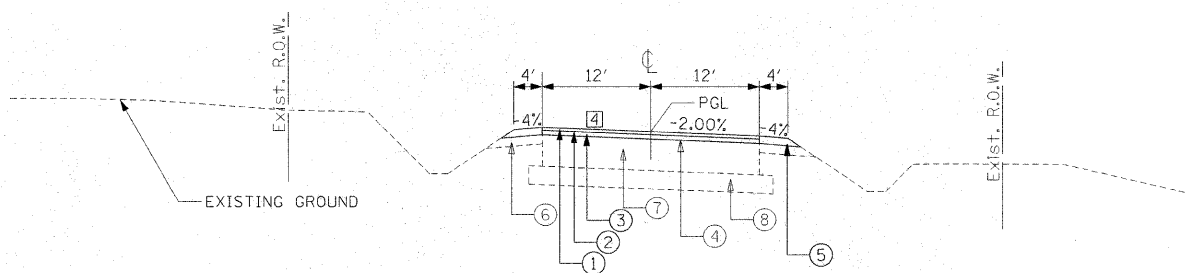


F.A.S. 662
 BEGINNING OF PROJECT STA. 436+50.00 TO STA. 450+00.00
 STA. 479+00.00 TO STA. 495+32.72



F.A.S. 662
 STA. 450+00.00 TO STA. 479+00.00
 (BRIDGE OMISSION STA. 468+21.00 TO STA. 473+29.00)
 (BRIDGE OMISSION STA. 476+69.50 TO STA. 478+54.50)



F.A.S. 662
 STA. 495+32.72 TO STA. 498+23.44

- ITEM
- ① HOT-MIX ASPHALT SURFACE COURSE, MIX "C", N70-2"
 - ② BITUMINOUS MATERIALS (PRIME COAT)
 - ③ HOT-MIX ASPHALT BINDER COURSE, IL-19.0, N70-3"
 - ④ EXISTING SURFACE TREATMENT (CLASS "A-1")
 - ⑤ AGGREGATE SHOULDERS, TYPE B 5" - BY CUMBERLAND COUNTY
 - ⑥ EXISTING AGGREGATE SHOULDERS, TYPE B 6"
 - ⑦ EXISTING AGGREGATE BASE COURSE, TYPE B 18"
 - ⑧ EXISTING PROCESSING LIME STABILIZATION SOIL MIXTURE, 12"

HMA MIXTURE REQUIREMENTS		
LOCATION	F.A.S. 662	F.A.S. 662
MIXTURE USE (S):	BINDER COURSE	SURFACE COURSE
PG:	PG 64-22	PG 64-22
DESIGN AIR VOIDS:	4.0% @ N DESIGN = 70	4.0% @ N DESIGN = 70
MIXTURE COMPOSITION (GRADATION MIXTURE)	IL 19.0	IL 9.5
FRICTION AGGREGATE	MIX "B"	MIX "C"

- PAVEMENT WIDTHS
- ① STATION 436+50.00 TO STATION 437+00.00
 TRANSITION 10.00' TO 12.00'
 - STATION 437+00.00 TO STATION 450+00.00 = 12.00'
 - STATION 479+00.00 TO STATION 495+32.72 = 12.00'

- SHOULDER TRANSITIONS
- ② STATION 450+00.00 TO STATION 467+80.00 = 4.00'
 - STATION 467+80.00 TO STATION 468+05.00
 TRANSITION 4.00' TO 3.00'
 - STATION 468+05.00 TO STATION 468+21.00 = 3.00'
 - STATION 473+29.00 TO STATION 473+45.00 = 3.00'
 - STATION 473+45.00 TO STATION 473+70.00
 TRANSITION 3.00' TO 4.00'
 - STATION 473+70.00 TO STATION 476+30.00 = 4.00'
 - STATION 476+30.00 TO STATION 476+55.00
 TRANSITION 4.00' TO 3.00'
 - STATION 476+55.00 TO STATION 476+69.50 = 3.00'
 - STATION 478+54.50 TO STATION 478+65.00 = 3.00'
 - STATION 478+65.00 TO STATION 478+90.00
 TRANSITION 3.00' TO 4.00'
 - STATION 478+90.00 TO STATION 479+00.00 = 4.00'

- SHOULDER CROSS SLOPE TRANSITIONS
- ③ STATION 450+00.00 TO STATION 467+55.00 = -4.00%
 - STATION 467+55.00 TO STATION 468+05.00
 TRANSITION -4.00% TO -2.00%
 - STATION 468+05.00 TO STATION 468+21.00 = -2.00%
 - STATION 473+29.00 TO STATION 473+45.00 = -2.00%
 - STATION 473+45.00 TO STATION 473+95.00
 TRANSITION -2.00% TO -4.00%
 - STATION 473+95.00 TO STATION 476+05.00 = -4.00%
 - STATION 476+05.00 TO STATION 476+55.00
 TRANSITION -4.00% TO -2.00%
 - STATION 476+55.00 TO STATION 476+69.50 = -2.00%
 - STATION 478+54.50 TO STATION 478+65.00 = -2.00%
 - STATION 478+65.00 TO STATION 479+15.00
 TRANSITION -2.00% TO -4.00%
 - STATION 479+15.00 TO STATION 479+00.00 = -4.00%

- PAVEMENT CROSS SLOPE TRANSITIONS
- ④ STATION 495+32.72 TO STATION 496+57.72
 TRANSITION -2.00% TO 2.00%
 - STATION 496+57.72 TO STATION 498+23.44 = 2.00%



LAYOUT: MNM/DJP 10/23/09
 DRAWN: DJP 10/23/09
 CHECKED: MNM 10/23/09

FILE NAME = I:\01\jobs\01s2021B\CADD\Road\Sheet\C-502.dgn	USER NAME = Pop00936	DESIGNED - MNM/DJP	REVISED -
PLOT SCALE = 10.0000' / 1"	CHECKED - MNM	DRAWN - DJP	REVISED -
PLOT DATE = 12\23\2009	DATE - 10/22/09		REVISED -

STATE OF ILLINOIS
 DEPARTMENT OF TRANSPORTATION

TYPICAL SECTION

SCALE: SHEET NO. 1 OF 1 SHEETS STA. 436+50.00 TO STA. 500+00.00

F.A.S. RTE.	SECTION	COUNTY	TOTAL SHEETS	SHEET NO.
662	09-00061-01-RS	CUMBERLAND	14	4
CONTRACT NO. 95614				
FED. ROAD DIST. NO. ILLINOIS FED. AID PROJECT				