

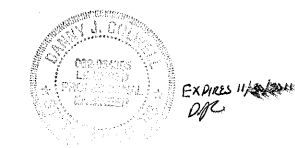
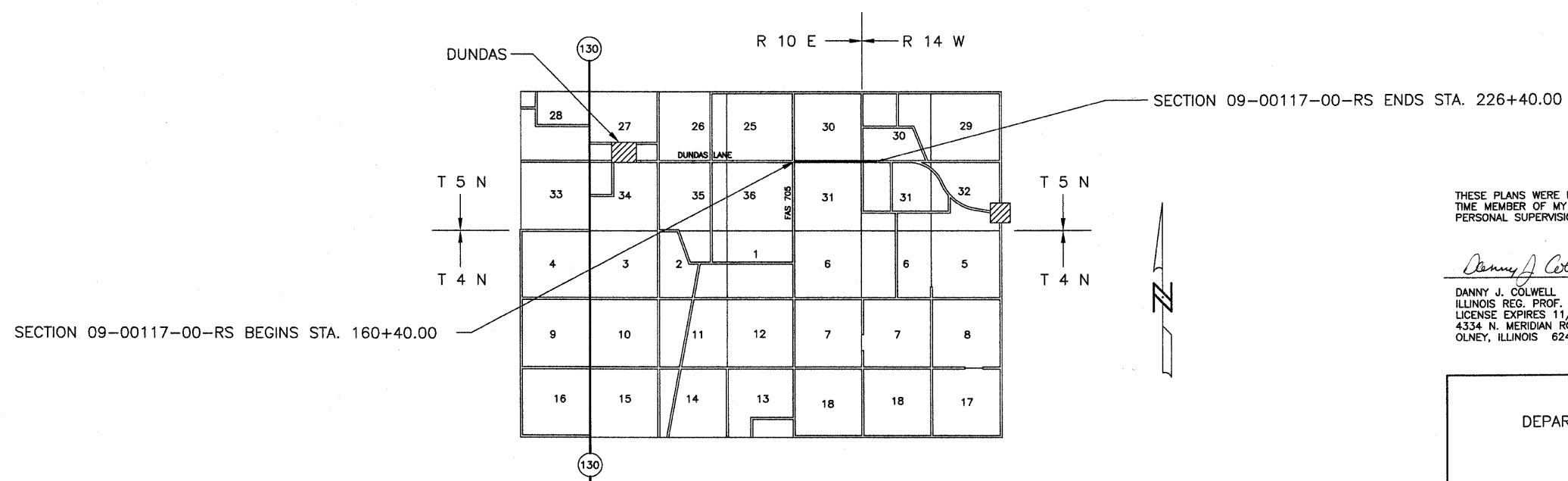
ROUTE	SECTION	COUNTY	TOTAL SHEETS	SHEET NO.
F.A.S. 801	09-00117-00-RS	RICHLAND	2	1
CONTRACT NO. 95616		ILLINOIS		

STATE OF ILLINOIS
DEPARTMENT OF TRANSPORTATION
DIVISION OF HIGHWAYS
PLANS FOR PROPOSED
AMERICAN RECOVERY AND REINVESTMENT ACT PROJECT

RICHLAND COUNTY
SECTION 09-00117-00-RS
F.A.S. 801
COUNTY HIGHWAY 5
PROJECT NO. ARA-0801(232)
JOB NO. C-97-032-10

INDEX OF SHEETS

SHEET	ITEM
1	COVER SHEET
2	SUMMARY OF QUANTITIES
	STANDARD 000001-05
	STANDARD 701901-01
	STANDARD BLR 21-8



THESE PLANS WERE PREPARED BY ME, OR A FULL TIME MEMBER OF MY STAFF, WORKING UNDER MY PERSONAL SUPERVISION.

Danny J. Colwell 12/29/09
DATE
DANNY J. COLWELL
ILLINOIS REG. PROF. ENG. 062-054895
LICENSE EXPIRES 11/30/11
4334 N. MERIDIAN ROAD
OLNEY, ILLINOIS 62450

CONTRACT NO. 95616
RURAL MAJOR COLLECTOR
ADT = 425
DESIGN SPEED = 40 MPH

Joint Utility Locating Information for Excavators
JULIE 1-800-892-0123

NET LENGTH SECTION 09-00117-00-RS = 6,600.00 Ft. = 1.250 Mi.

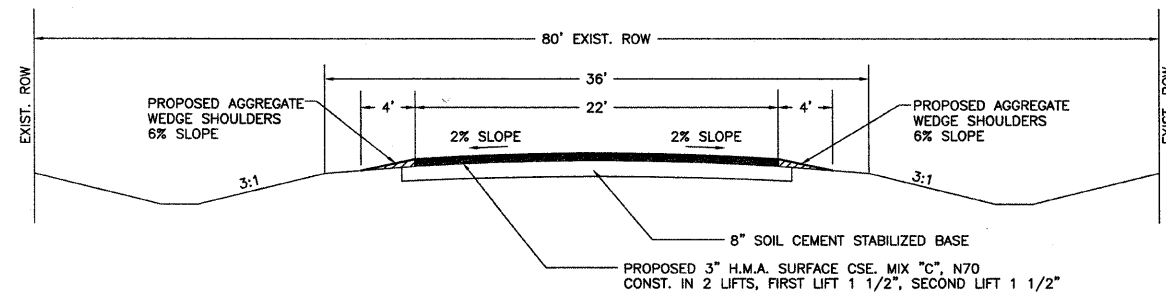
STATE OF ILLINOIS
DEPARTMENT OF TRANSPORTATION

PASSED 1/5 2010
Maureen East
DISTRICT SEVEN ENGINEER OF
LOCAL ROADS AND STREETS

Releasing For
Bid Based on
Limited Review 1/5 2010
Roger L. Dushell
DEPUTY DIRECTOR OF HIGHWAYS
REGION FOUR ENGINEER

ROUTE	SECTION	COUNTY	TOTAL SHEETS	SHEET NO.
F.A.S. 801	09-00117-00-RS	RICHLAND	2	2
CONTRACT NO. 95616		ILLINOIS		

TYPICAL SECTION OF PROPOSED IMPROVEMENT



STA. 160+40.00 TO STA. 226+40.00

SECTION 09-00117-01-RS
SUMMARY OF QUANTITIES

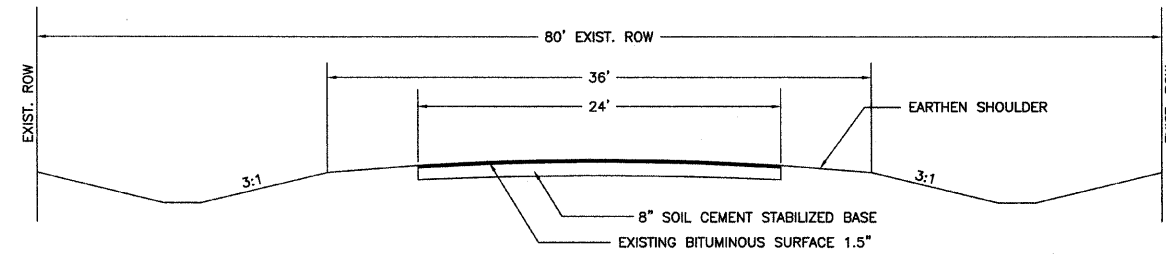
CODE NO.	ITEM	QUANTITY	UNIT
40600987	PORTLAND CEMENT CONCRETE SURFACE REMOVAL - BUTT JOINT (SPECIAL)	214	SQ YD
40603315	HOT-MIX ASPHALT SURFACE COURSE, MIX "C", N70	2800	TON
48102100	AGGREGATE WEDGE SHOULDER, TYPE B	500	TON
67100100	MOBILIZATION	1	L SUM
70103700	TRAFFIC CONTROL COMPLETE	1	L SUM

PAVEMENT DESIGN DATA

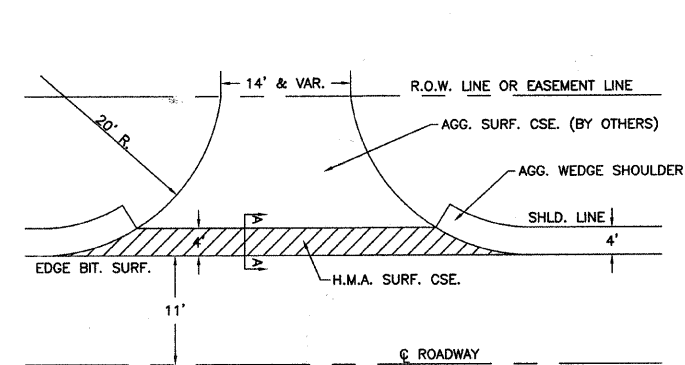
CLASS III ROAD, 80,000 POUND TRUCK ROUTE
STRUCTURAL DESIGN TRAFFIC (S.D.T.) 2020 PC = 358
SU = 25
MU = 5
MINIMUM SOIL SUPPORT: I.B.R. = 3
PERCENT OF S.D.T. IN TRAFFIC LANE P = 50%
S = 50%
M = 50%

PAVEMENT STRUCTURE MATERIALS:
EXISTING - 8" SOIL-CEMENT BASE COURSE
PROPOSED - 3" HMA SURFACE COURSE, 22' WIDE

TYPICAL SECTION OF EXISTING ROAD

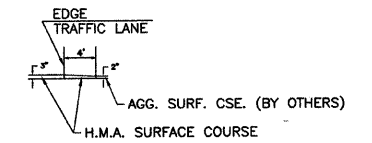


STA. 160+40.00 TO STA. 226+40.00



PLAN

ENTRANCE DETAIL

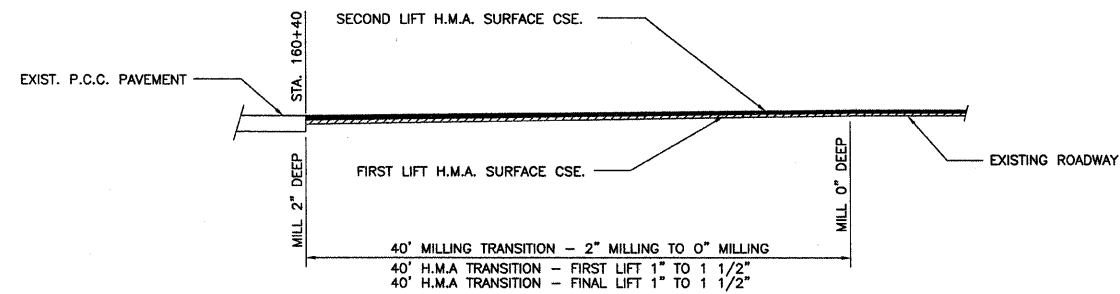


SECTION A-A

DRIVEWAY TRANSITION SCHEDULE

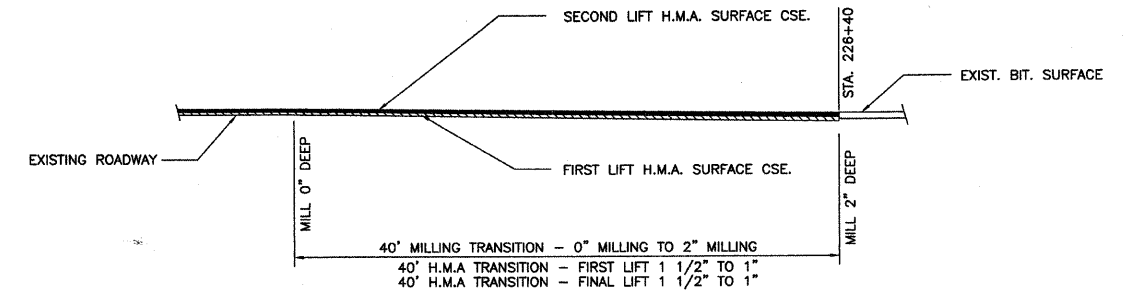
STATION	DRIVE TYPE	EST. TONS
RT. 166+60	PRIVATE	1.75
RT. 168+40	PRIVATE	1.75
LT. 202+65	TOWNSHIP ROAD	3.50
RT. 202+65	TOWNSHIP ROAD	3.50
RT. 219+00	PRIVATE	2.50
RT. 220+75	PRIVATE	2.00
RT. 221+65	PRIVATE	2.50
RT. 222+60	TOWNSHIP ROAD	3.50

CONSTRUCTION OF DRIVEWAY TRANSITIONS SHALL BE INCLUDED IN H.M.A. SURFACE COURSE.
NO ADDITIONAL PAYMENT WILL BE MADE



BUTT JOINT DETAIL AT THE WEST END OF THE PROJECT

COST OF THIS WORK INCLUDED IN P.C.C. SURFACE REMOVAL - BUTT JOINT (SPECIAL)



BUTT JOINT DETAIL AT THE EAST END OF THE PROJECT

COST OF THIS WORK INCLUDED IN P.C.C. SURFACE REMOVAL - BUTT JOINT (SPECIAL)