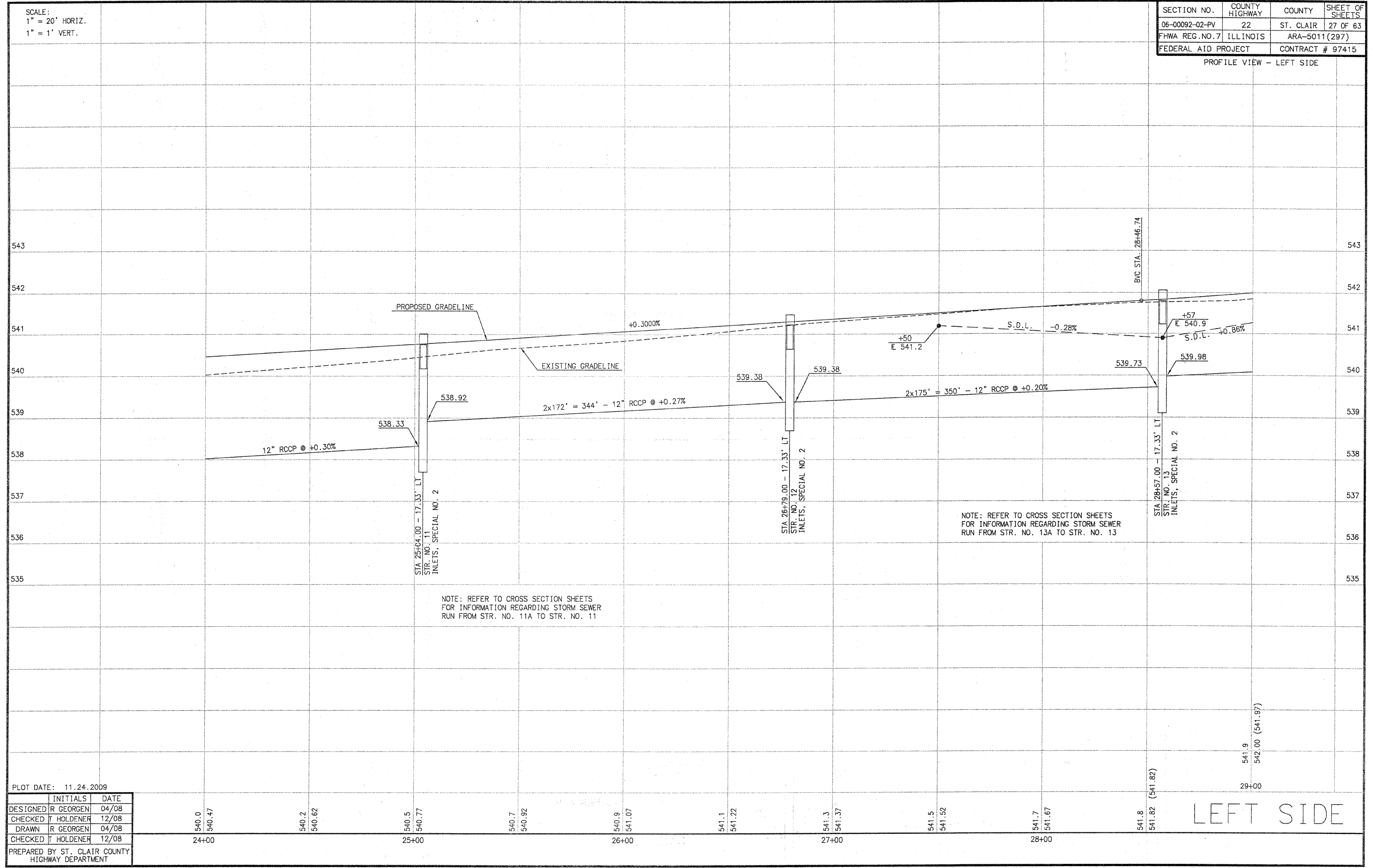


SCALE:  
 1" = 20' HORIZ.  
 1" = 1' VERT.

SECTION NO.	COUNTY HIGHWAY	COUNTY	SHEET OF SHEETS
06-00092-02-PV	22	ST. CLAIR	27 OF 63
FHWA REG.NO.7	ILLINOIS	ARA-5011(297)	
FEDERAL AID PROJECT	CONTRACT # 97415		

PROFILE VIEW - LEFT SIDE



NOTE: REFER TO CROSS SECTION SHEETS FOR INFORMATION REGARDING STORM SEWER RUN FROM STR. NO. 11A TO STR. NO. 11

NOTE: REFER TO CROSS SECTION SHEETS FOR INFORMATION REGARDING STORM SEWER RUN FROM STR. NO. 13A TO STR. NO. 13

PLOT DATE: 11.24.2009

	INITIALS	DATE
DESIGNED	R GEORGEN	04/08
CHECKED	T HOLDENER	12/08
DRAWN	R GEORGEN	04/08
CHECKED	T HOLDENER	12/08

PREPARED BY ST. CLAIR COUNTY HIGHWAY DEPARTMENT

540.0 540.47 540.2 540.62 540.5 540.77 540.7 540.92 540.9 541.07 541.1 541.22 541.3 541.37 541.5 541.52 541.7 541.67 541.8 541.82 (541.82) 541.9 542.00 (541.97) 29+00

LEFT SIDE