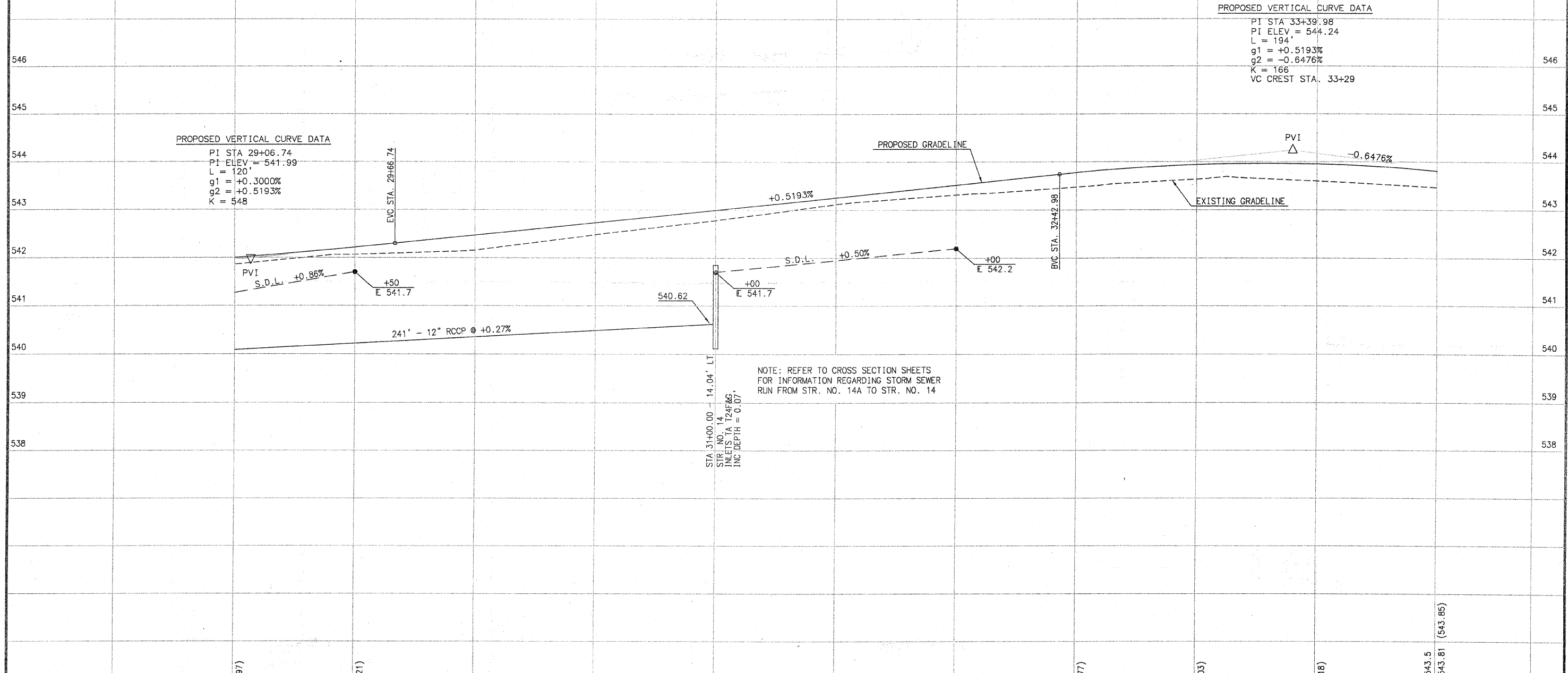


SCALE:
1" = 20' HORIZ.
1" = 1' VERT.

SECTION NO.	COUNTY HIGHWAY	COUNTY	SHEET OF SHEETS
06-00092-02-PV	22	ST. CLAIR	28 OF 63
FHWA REG. NO. 7	ILLINOIS	ARA-5011(297)	
FEDERAL AID PROJECT		CONTRACT # 97415	

PROFILE VIEW - LEFT SIDE



PROPOSED VERTICAL CURVE DATA
 PI STA 29+06.74
 PI ELEV = 541.99
 L = 120'
 g1 = +0.3000%
 g2 = +0.5193%
 K = 548

PROPOSED VERTICAL CURVE DATA
 PI STA 33+39.98
 PI ELEV = 544.24
 L = 194'
 g1 = +0.5193%
 g2 = -0.6476%
 K = 166
 VC CREST STA. 33+29

NOTE: REFER TO CROSS SECTION SHEETS FOR INFORMATION REGARDING STORM SEWER RUN FROM STR. NO. 14A TO STR. NO. 14

PLOT DATE: 11.24.2009

	INITIALS	DATE
DESIGNED	R GEORGEN	04/08
CHECKED	T HOLDENER	12/08
DRAWN	R GEORGEN	04/08
CHECKED	T HOLDENER	12/08

PREPARED BY ST. CLAIR COUNTY HIGHWAY DEPARTMENT

541.9 542.00 (541.97)	29+00	542.1 542.22 (542.21)	30+00	542.2 542.47	31+00	542.5 542.73	32+00	543.1 543.25	33+00	543.5 543.77 (543.77)	34+00	543.6 543.94 (544.03)	543.5 543.81 (543.85)
--------------------------	-------	--------------------------	-------	-----------------	-------	-----------------	-------	-----------------	-------	--------------------------	-------	--------------------------	--------------------------

LEFT SIDE