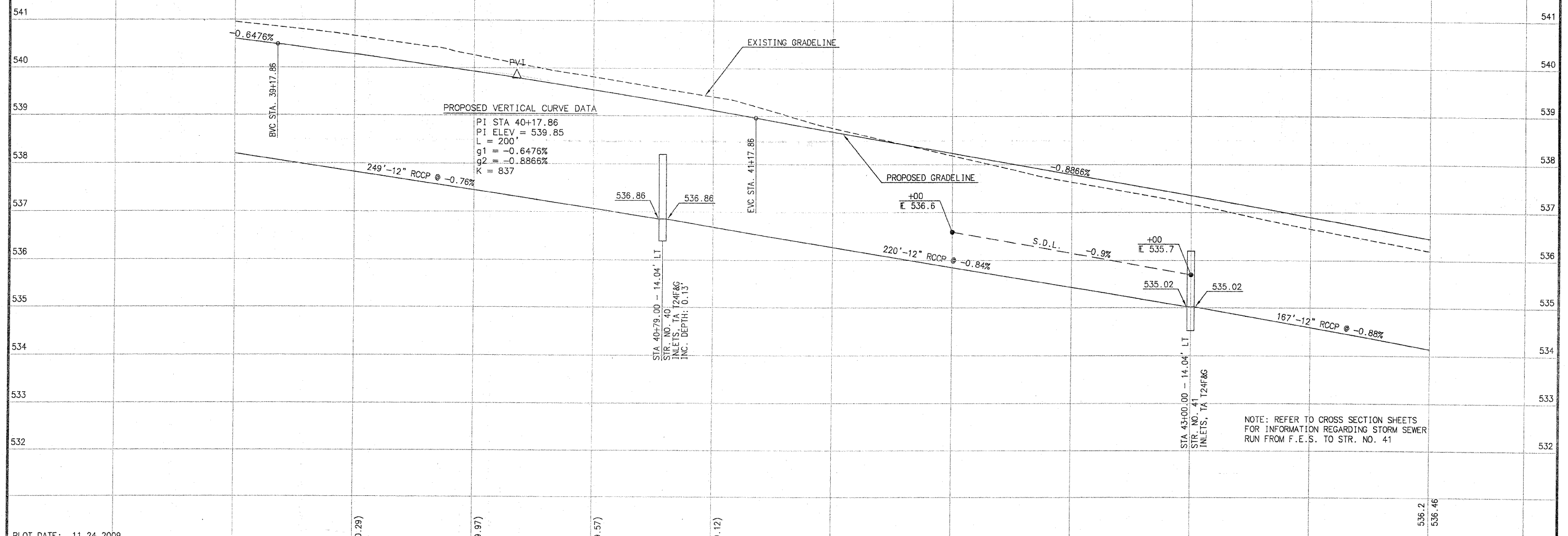


SCALE:
1" = 20' HORIZ.
1" = 1' VERT.

SECTION NO.	COUNTY HIGHWAY	COUNTY	SHEET OF SHEETS
06-00092-02-PV	22	ST. CLAIR	30 OF 63
FHWA REG. NO. 7	ILLINOIS	ARA-5011 (297)	
FEDERAL AID PROJECT		CONTRACT # 97415	

PROFILE VIEW - LEFT SIDE



NOTE: REFER TO CROSS SECTION SHEETS FOR INFORMATION REGARDING STORM SEWER RUN FROM F.E.S. TO STR. NO. 41

PLOT DATE: 11.24.2009

	INITIALS	DATE
DESIGNED	R GEORGEN	04/08
CHECKED	T HOLDENER	12/08
DRAWN	R GEORGEN	04/08
CHECKED	T HOLDENER	12/08

PREPARED BY ST. CLAIR COUNTY HIGHWAY DEPARTMENT

541.0	540.61	540.7	540.29 (540.29)	540.3	539.93 (539.97)	539.8	539.54 (539.57)	539.4	539.12 (539.12)	538.8	538.68	538.2	538.24	537.6	537.79	537.2	537.35	536.7	536.91
39+00				40+00				41+00				42+00				43+00			

LEFT SIDE