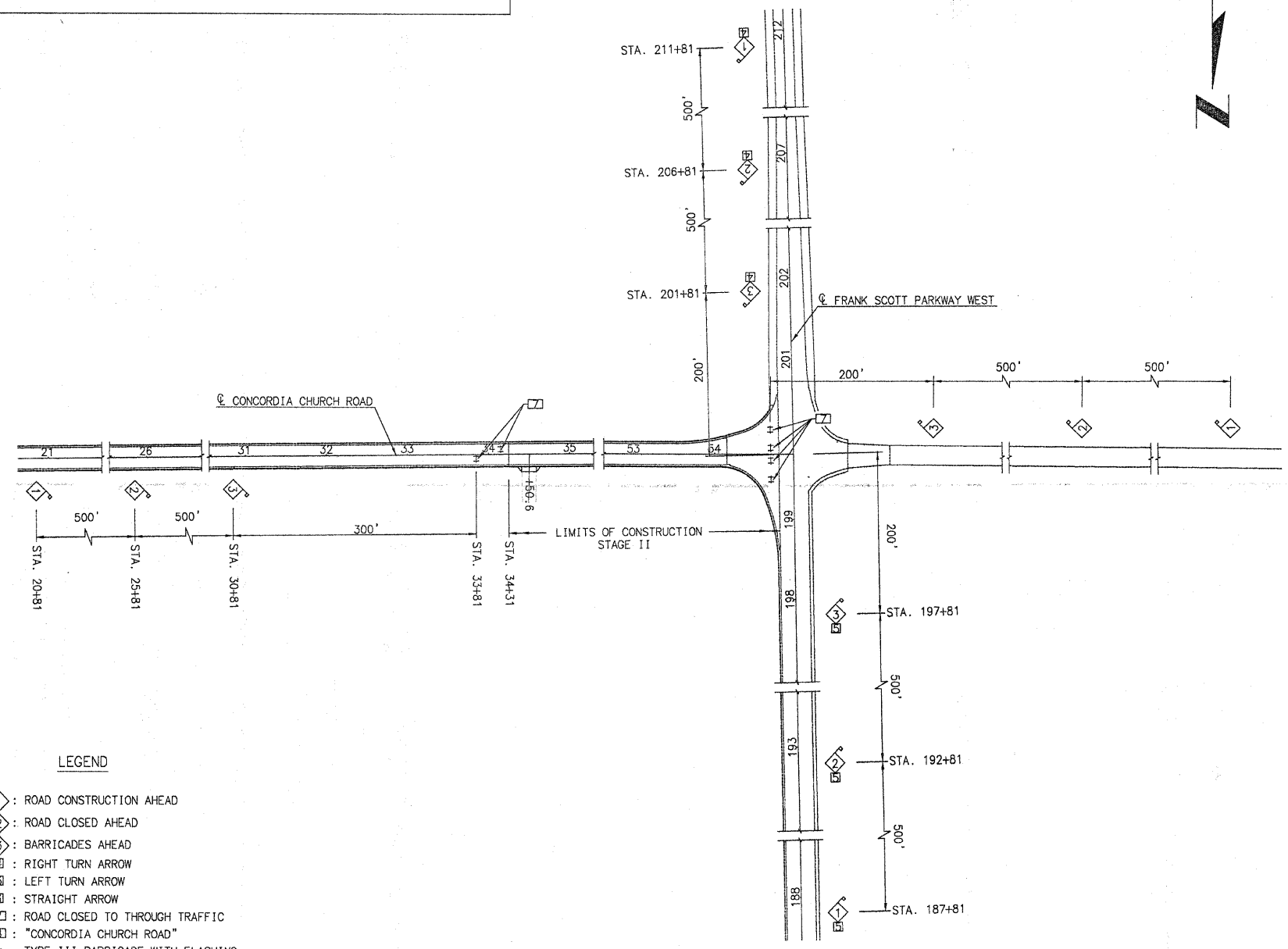


SECTION NO.	COUNTY HIGHWAY	COUNTY	SHEET OF SHEETS
06-00092-02-PV	22	ST. CLAIR	43 OF 63
FHWA REG. NO. 7	ILLINOIS	ARA-5011(297)	
FEDERAL AID PROJECT	CONTRACT # 97415		

TRAFFIC CONTROL PLAN

NOTES:  
 1. THE SIGN PLACEMENT SHOWN HERE SHALL BE APPLIED DURING THE CONSTRUCTION OF STAGE II.  
 2. THE ADVANCE WARNING SIGNS AS SHOWN ALONG FRANK SCOTT PARKWAY AND THE WEST APPROACH OF CONCORDIA CHURCH ROAD SHALL REMAIN IN PLACE THROUGHOUT THE DURATION OF THIS PROJECT.



LEGEND

- ◇ 1 : ROAD CONSTRUCTION AHEAD
- ◇ 2 : ROAD CLOSED AHEAD
- ◇ 3 : BARRICADES AHEAD
- ▣ 4 : RIGHT TURN ARROW
- ▣ 5 : LEFT TURN ARROW
- ▣ 6 : STRAIGHT ARROW
- ▣ 7 : ROAD CLOSED TO THROUGH TRAFFIC
- ▣ 8 : "CONCORDIA CHURCH ROAD"
- ± : TYPE III BARRICADE WITH FLASHING AMBER LIGHTS MOUNTED ON TOP RAIL

PLOT DATE: 11.24.2009

	INITIALS	DATE
DESIGNED	RGEORGEN	10/08
CHECKED	THOLDENER	12/08
DRAWN	RGEORGEN	10/08
CHECKED	THOLDENER	12/08

PREPARED BY ST. CLAIR COUNTY HIGHWAY DEPARTMENT

FILE NAME: 00092-02-PV TCP PLN.dwg

STAGE II LIMITS - STA. 34+31- STA. 54+15.3