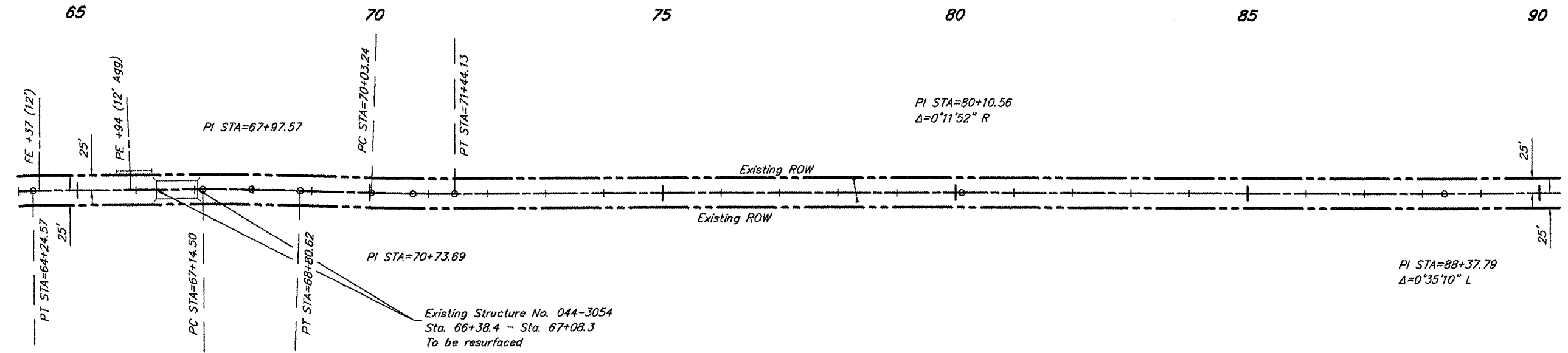


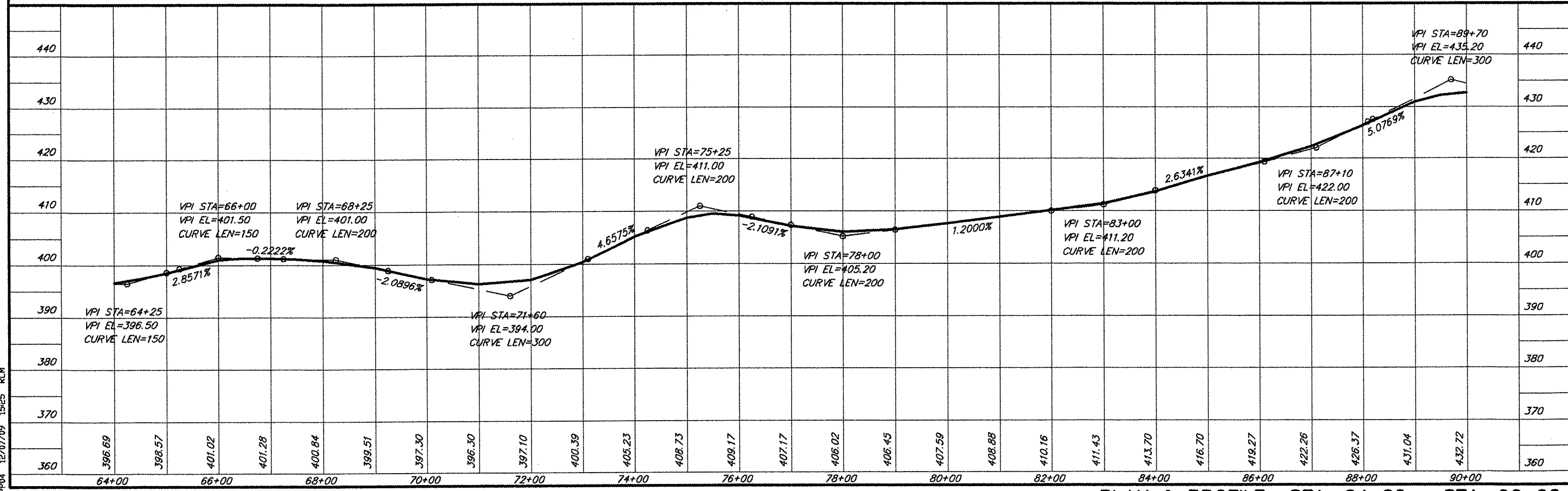
ROUTE	SECTION	COUNTY	TOTAL SHEETS	SHEET NO.
FAS 924	09-00062-00-RS	JOHNSON	10	7
PROJECT NO. ARA-RS-924 (124)			CONTRACT NO. 99372	

**CURVE DATA**  
 $\Delta = 2^{\circ}01'05''$   $T = 70.45'$   
 $D = 1^{\circ}25'57''$   $L = 140.89'$   
 $R = 4000.00'$   $E = 0.62'$   
 $S.E. = 0.017'/ft.$   
 Attain Sta. 69+58 to Sta. 70+13  
 Remove Sta. 71+34 to Sta. 71+89



**CURVE DATA**  
 $\Delta = 2^{\circ}22'46''$   $T = 83.07'$   
 $D = 1^{\circ}25'57''$   $L = 166.12'$   
 $R = 4000.00'$   $E = 0.86'$   
 $S.E. = 0.017'/ft.$   
 Attain Sta. 66+69 to Sta. 67+24  
 Remove Sta. 68+71 to Sta. 69+26

SCALES:  
 1" = 200' HOR  
 1" = 20' VER



PLAN & PROFILE STA. 64+00 - STA. 90+00

685 PPO4 12/07/09 15:25 RLM