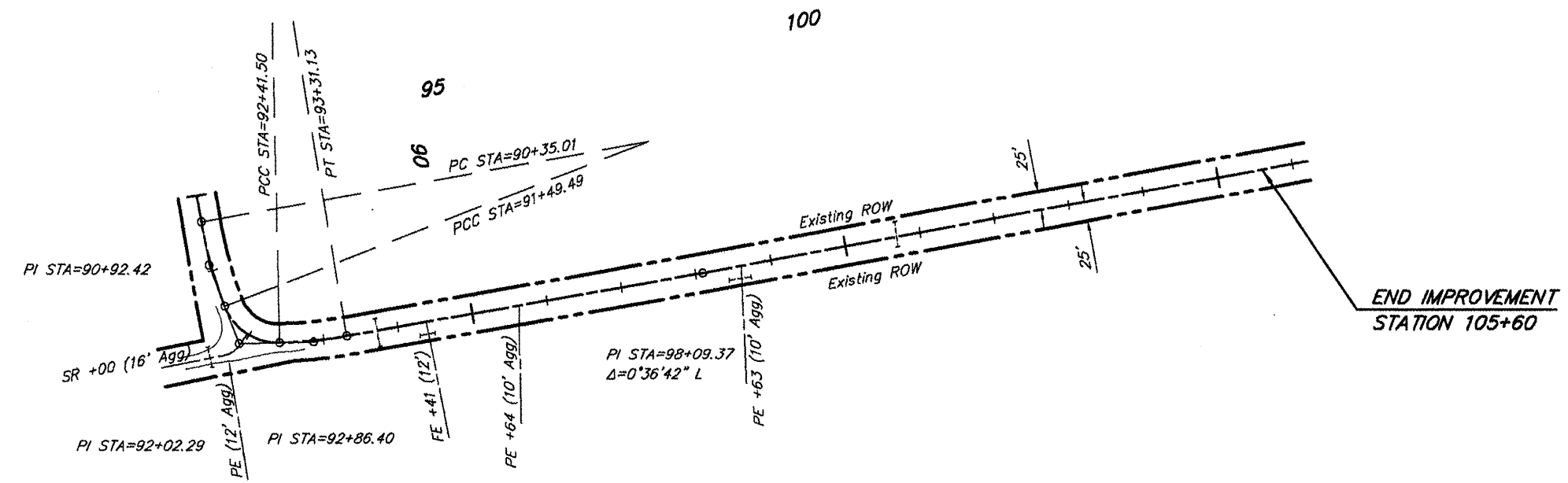


ROUTE	SECTION	COUNTY	TOTAL SHEETS	SHEET NO.
FAS 924	09-00062-00-RS	JOHNSON	10	8
PROJECT NO. ARA-RS-924 (124)			CONTRACT NO. 99372	

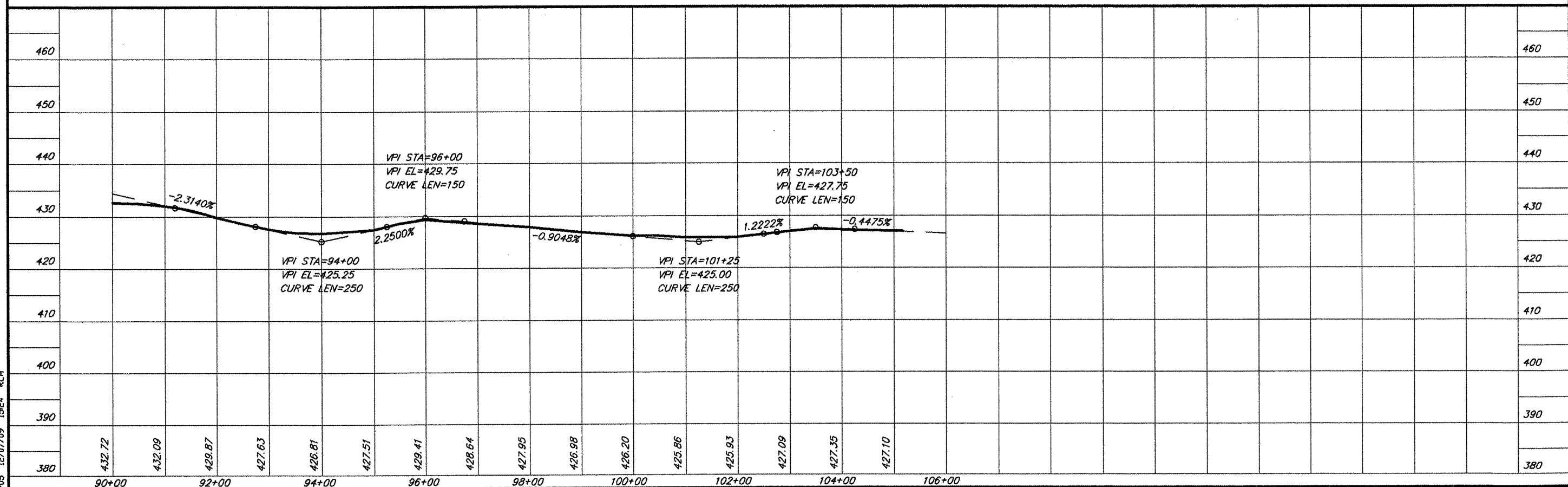
CURVE DATA
 $\Delta = 10^{\circ}55'57''$ $T = 57.42'$
 $D = 9^{\circ}32'57''$ $L = 114.48'$
 $R = 600.00'$ $E = 2.74'$
 $S.E. = 0.076'/ft.$
 Attain Sta. 89+22 to Sta. 90+79

CURVE DATA
 $\Delta = 70^{\circ}17'27''$ $T = 52.80'$
 $D = 76^{\circ}23'40''$ $L = 92.01'$
 $R = 75.00'$ $E = 16.72'$
 $S.E. = 0.080'/ft.$
 Attain Sta. 91+49 to Sta. 91+95
 Remove Sta. 91+95 to Sta. 92+42

CURVE DATA
 $\Delta = 8^{\circ}33'32''$ $T = 44.90'$
 $D = 9^{\circ}32'57''$ $L = 89.63'$
 $R = 600.00'$ $E = 1.68'$
 $S.E. = 0.076'/ft.$
 Remove Sta. 92+87 to Sta. 94+44



SCALES:
 1" = 200' HOR
 1" = 20' VER



PLAN & PROFILE STA. 90+00 - STA. 106+00

685 PFD5 12/07/09 1524 RLM