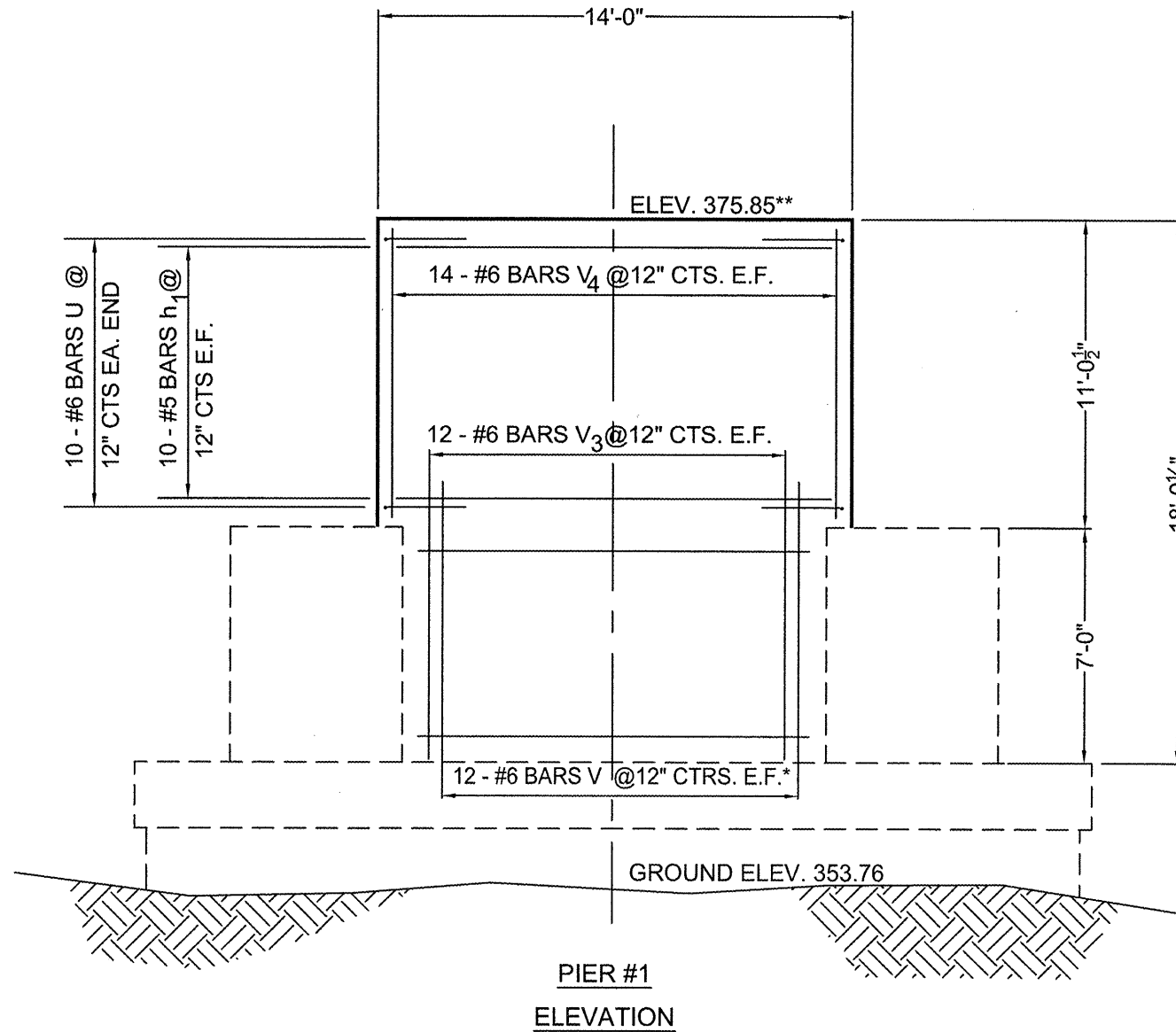
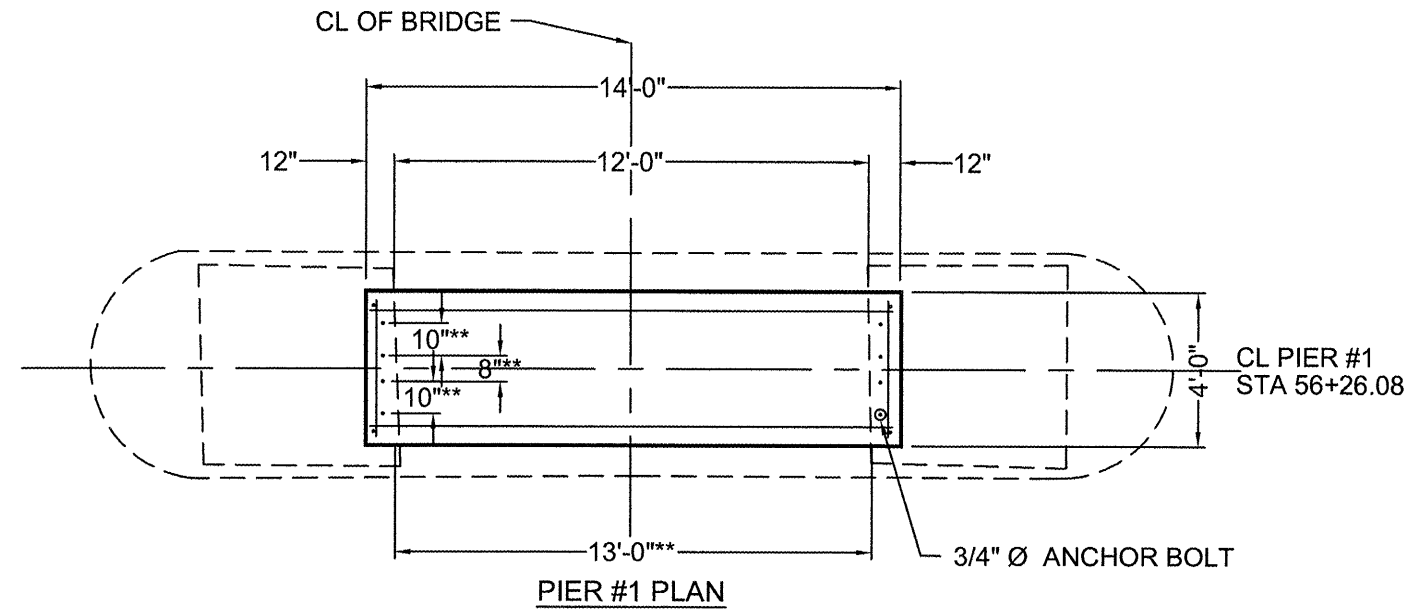




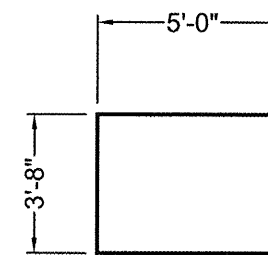
**BILL OF MATERIAL
FOR PIER #1**

Bar	No.	Size	Length	Shape
h1	20	#5	13'-8"	—
u	20	#6	13'-8"	□
V	24	#6	3'-9"	—
V3	24	#6	10'-0"	—
V4	28	#6	10'-9"	—
Concrete Structures			35.3 Cu. Yds.	
Reinforcement Bars			1640 Lbs.	

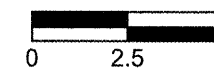


* BARS TO BE DRILLED & EPOXY GROUTED 9" INTO EXISTING CONC.

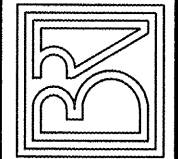
** TO BE VERIFIED BY BRIDGE SUPPLIER



BAR U
NO SCALE



BROWN AND ROBERTS, INC.
CONSULTING ENGINEERS & LAND SURVEYORS
1 WEST RIDGE ROAD HARRISBURG, IL. 62946 (618) 252-8111



SECTION 06-00082-00-BT
PIER #1 DETAILS
STATION 56+26.08

Drawn By: GSS
Checked By: MWR

Revisions

Item	Date	By

Scale: AS SHOWN

Field Bk:

Job Number: 05-138

Date: 12/08

Sheet

104