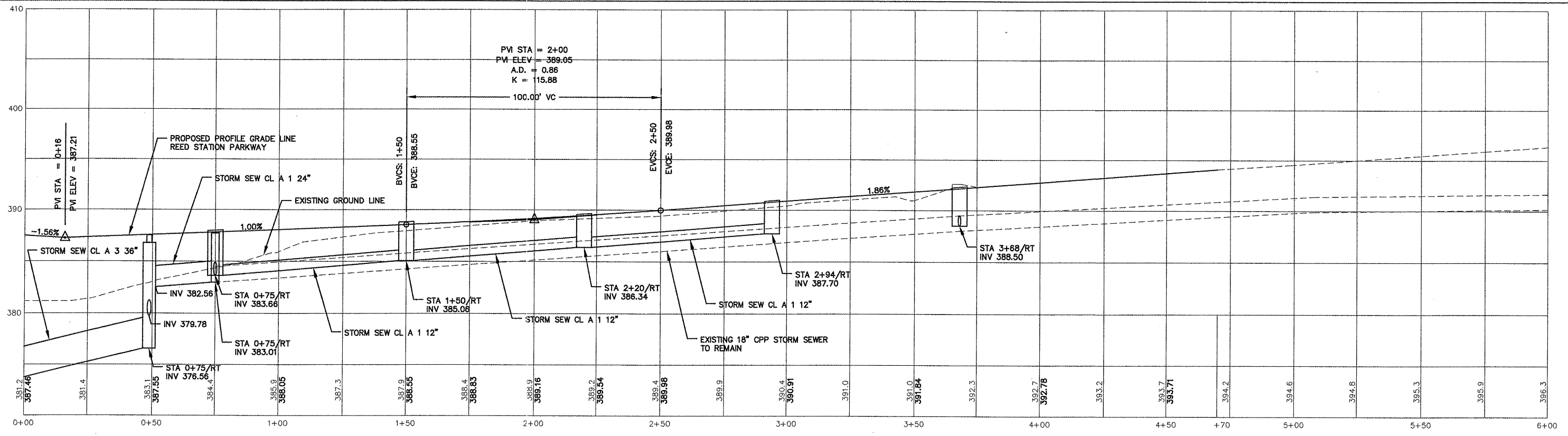
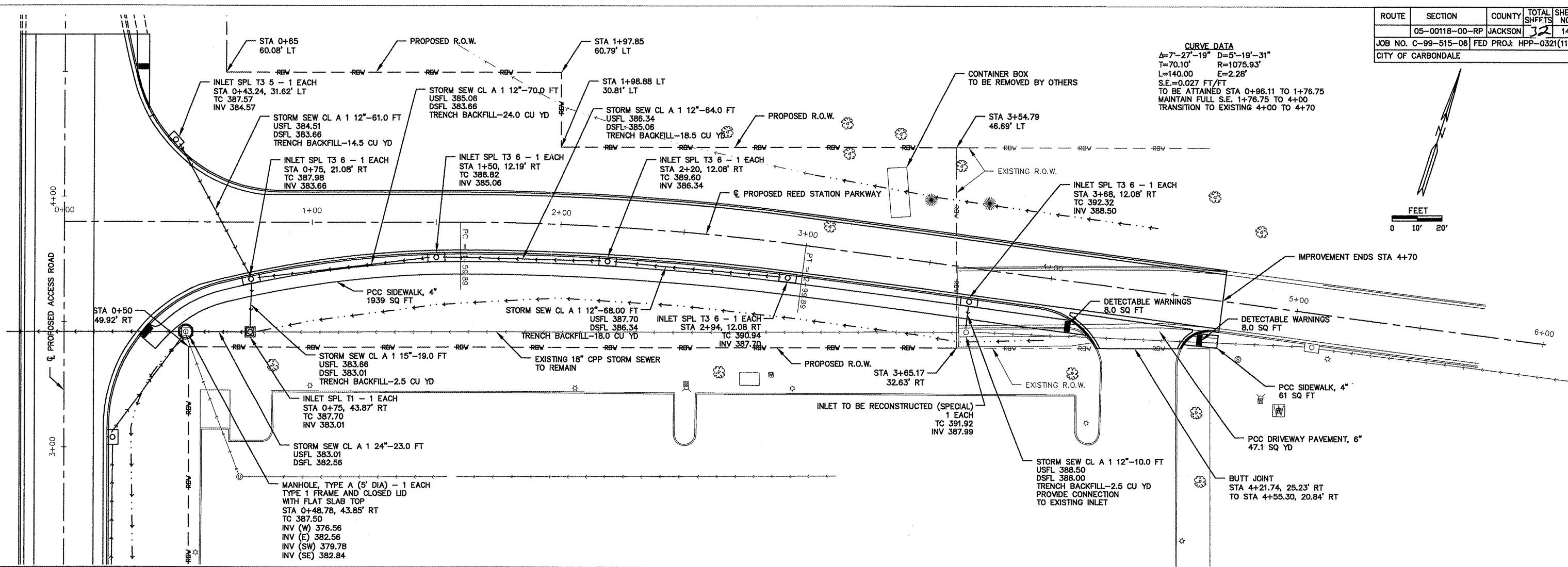
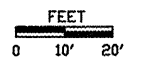


ROUTE	SECTION	COUNTY	TOTAL SHEET NO.
05-00118-00-RP	JACKSON	32	14
JOB NO. C-99-515-06			FED PROJ: HPP-0321(117)
CITY OF CARBONDALE			

CURVE DATA
 $\Delta=7^{\circ}-27'-19''$ $D=5^{\circ}-19'-31''$
 $T=70.10'$ $R=1075.93'$
 $L=140.00$ $E=2.28'$
 $S.E.=0.027$ FT/FT
 TO BE ATTAINED STA 0+96.11 TO 1+76.75
 MAINTAIN FULL S.E. 1+76.75 TO 4+00
 TRANSITION TO EXISTING 4+00 TO 4+70



PLAN AND PROFILE
 REED STATION PARKWAY
 STA 0+00 TO STA 6+00