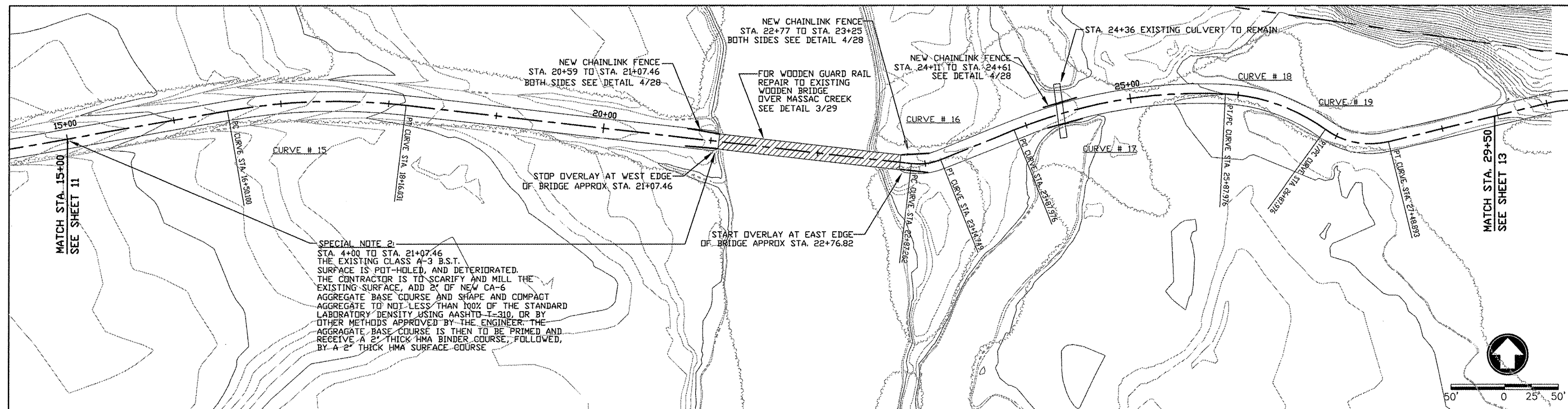


ROUTE	SECTION	COUNTY	TOTAL SHEETS	SHEET NO.
GRCDT09-00038-00-BT		MASSAC	55	12
FROM STA. 15+00		TO STA. 29+50		
FEDERAL PROJECT NO. ARA-5045(009)		CONTRACT NO. 99417		



**SPECIAL NOTE 2:**  
 STA. 4+00 TO STA. 21+07.46  
 THE EXISTING CLASS A-3 B.S.T. SURFACE IS POT-HOLED, AND DETERIORATED. THE CONTRACTOR IS TO SCARIFY AND MILL THE EXISTING SURFACE, ADD 2" OF NEW CA-6 AGGREGATE BASE COURSE AND SHAPE AND COMPACT AGGREGATE TO NOT LESS THAN 100% OF THE STANDARD LABORATORY DENSITY USING AASHTO-T-310, OR BY OTHER METHODS APPROVED BY THE ENGINEER. THE AGGREGATE BASE COURSE IS THEN TO BE PRIMED AND RECEIVE A 2" THICK HMA BINDER COURSE, FOLLOWED, BY A 2" THICK HMA SURFACE COURSE.

**HORIZONTAL CURVE # 15 DATA**  
 PI STA. = 17+33.650 R = 572.987  
 PC STA. = 16+50.100 T = 83.550  
 PT STA. = 18+16.031 L = 165.931  
 DELTA = 16°35'32" E = 6.059

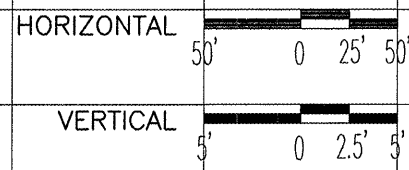
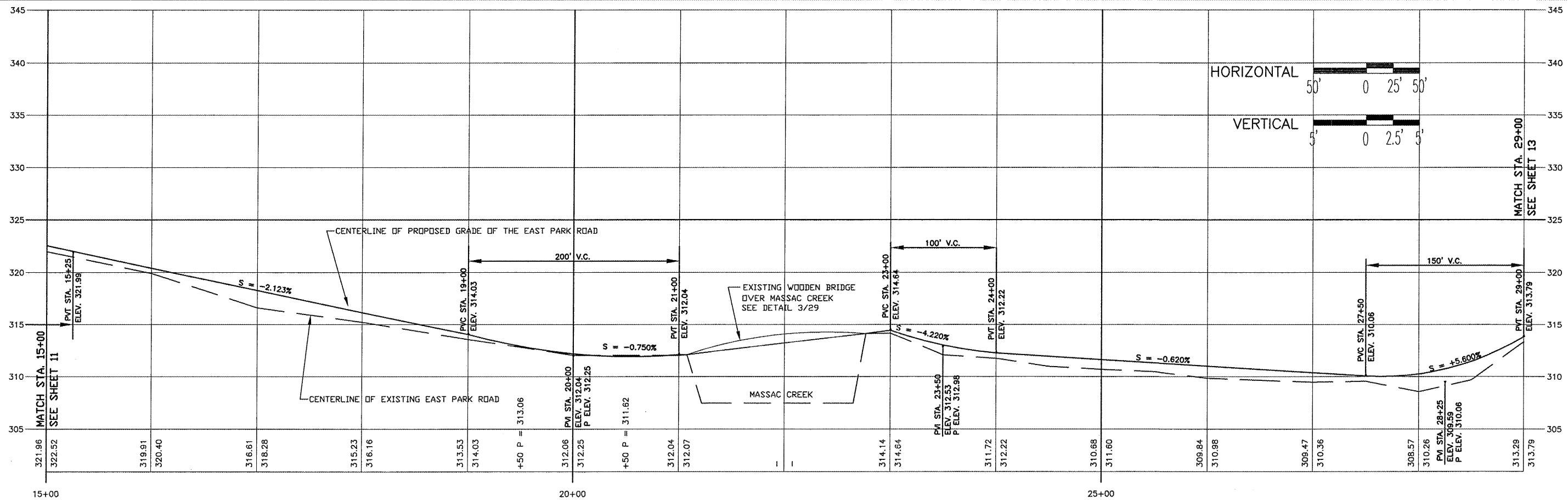
**HORIZONTAL CURVE # 16 DATA**  
 PI STA. = 23+01.298 R = 55.000  
 PC STA. = 22+87.262 T = 14.037  
 PT STA. = 23+14.749 L = 27.487  
 DELTA = 28°38'04" E = 1.763

**HORIZONTAL CURVE # 17 DATA**  
 PI STA. = 24+89.558 R = 463.403  
 PC STA. = 23+87.976 T = 101.582  
 PT STA. = 25+87.976 L = 200.000  
 DELTA = 24°43'42" E = 11.003

**HORIZONTAL CURVE # 18 DATA**  
 PI STA. = 26+39.421 R = 172.743  
 PC STA. = 25+87.976 T = 51.445  
 PT STA. = 26+87.976 L = 100.000  
 DELTA = 33°10'05" E = 7.498

**HORIZONTAL CURVE # 19 DATA**  
 PI STA. = 27+20.490 R = 70.393  
 PC STA. = 26+87.976 T = 32.514  
 PT STA. = 27+48.893 L = 60.917  
 DELTA = 49°34'59" E = 7.146

EAST PARK ROAD



FROM STA. 15+00 TO 29+50