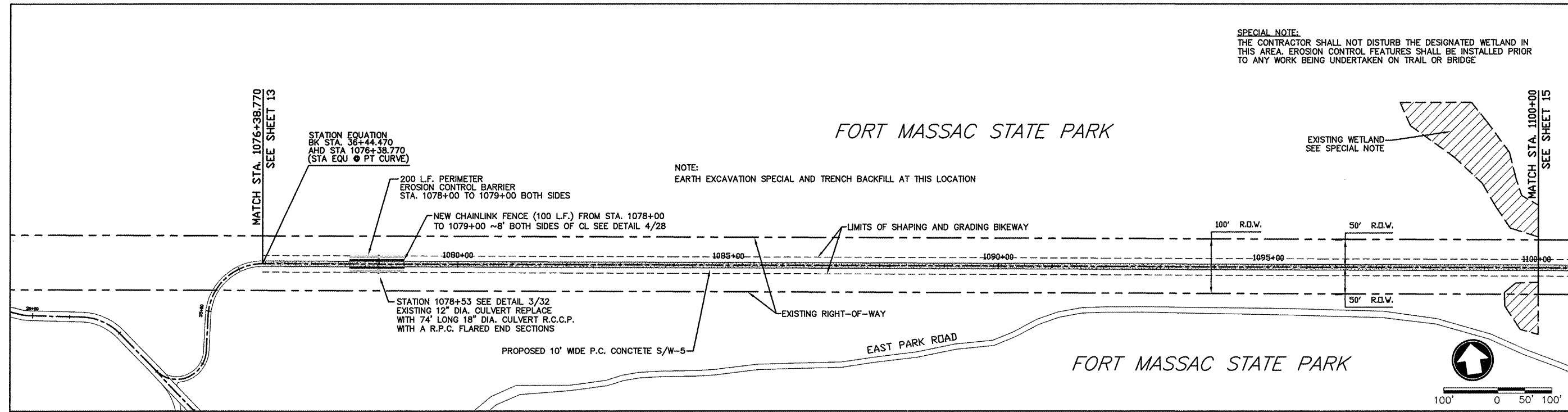


ROUTE	SECTION	COUNTY	TOTAL SHEETS	SHEET NO.
GRCDT	09-00038-00-BT	MASSAC	55	14
FROM STA. 1073+00 TO STA. 1100+00				
FEDERAL PROJECT NO. ARA-5045(009) CONTRACT NO. 99417				

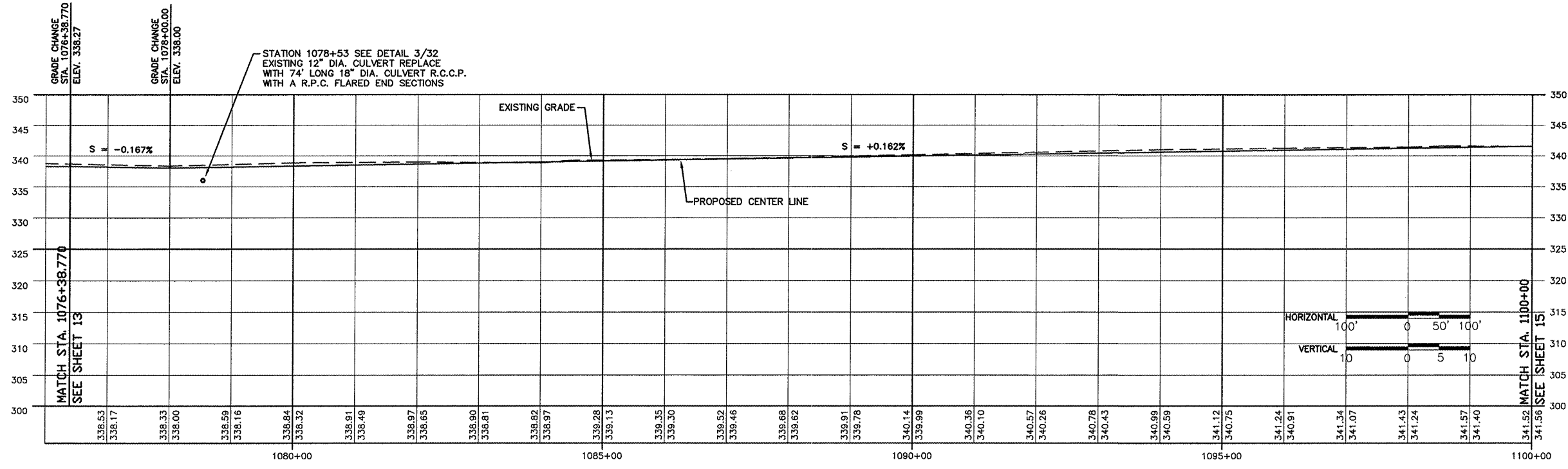


SPECIAL NOTE:
 THE CONTRACTOR SHALL NOT DISTURB THE DESIGNATED WETLAND IN THIS AREA. EROSION CONTROL FEATURES SHALL BE INSTALLED PRIOR TO ANY WORK BEING UNDERTAKEN ON TRAIL OR BRIDGE

NOTE:
 EARTH EXCAVATION SPECIAL AND TRENCH BACKFILL AT THIS LOCATION

MASSAC CREEK BRIDGE (BM #26) DESCRIPTION:
 1/2" X 24" REBAR, WITH PLASTIC SURVEY CAP MARKED "CITY OF METROPOLIS", C.P. # 26. ELEV. 337.57. LOCATED 575' LEFT OF CENTERLINE OF EAST PARK ROAD AT STA. 9+50

ALONG OLD R.R. R.O.W.



FROM STA. 1076+38 TO 1100+00