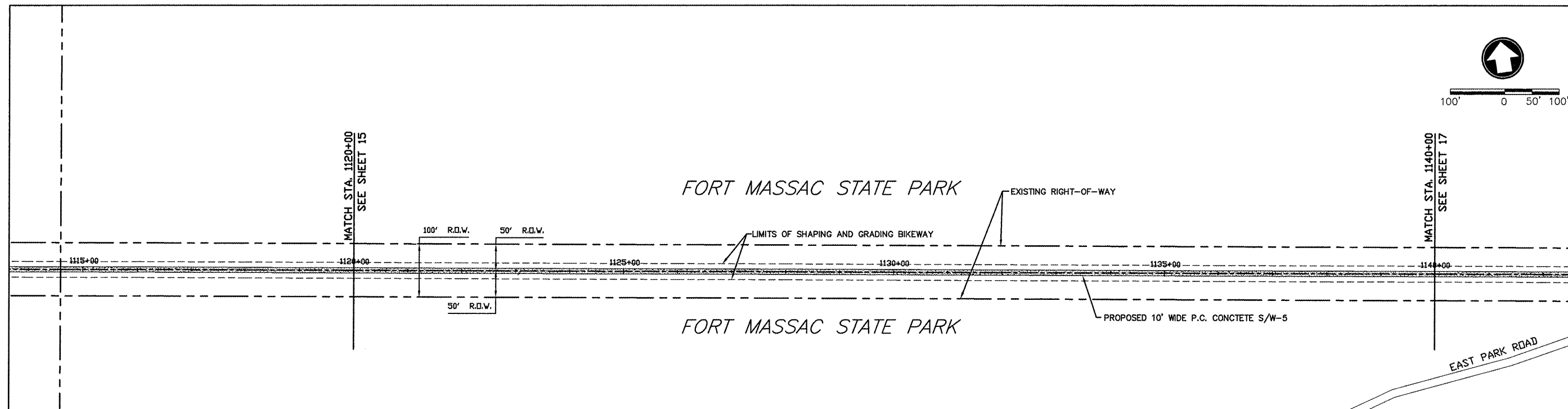
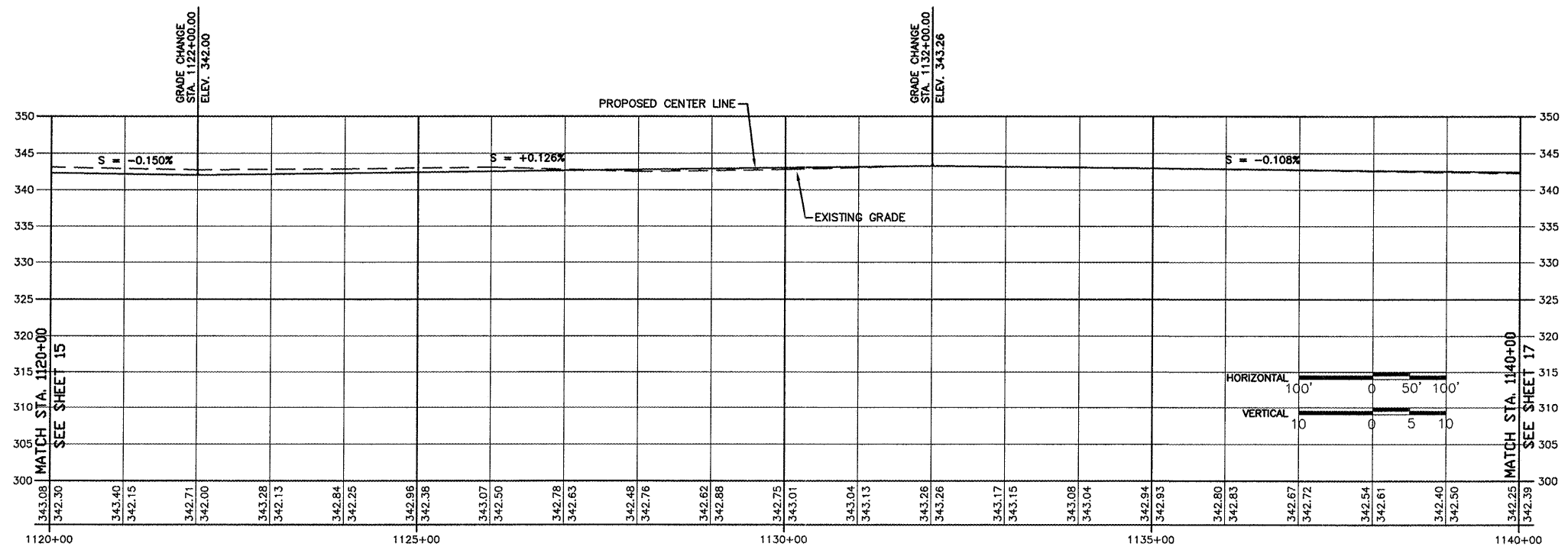


ROUTE	SECTION	COUNTY	TOTAL SHEETS	SHEET NO.
GRCDT09-00038-00-BT		MASSAC	55	16
FROM STA. 1120+00 TO STA. 1140+00				
FEDERAL PROJECT NO. ARA-5045(009) CONTRACT NO. 99417				



FOUR MILE CREEK BRIDGE (BM #44) DESCRIPTION:
 1/2" X 24" REBAR, WITH PLASTIC SURVEY CAP MARKED "CITY OF METROPOLIS", C.P. # 44. ELEV. 339.12. LOCATED 2' RIGHT OF CENTERLINE OF RAILROAD BED AT STA. 1059+73.16.

ALONG OLD R.R. R.O.W.



FROM STA. 1120+00 TO 1140+00