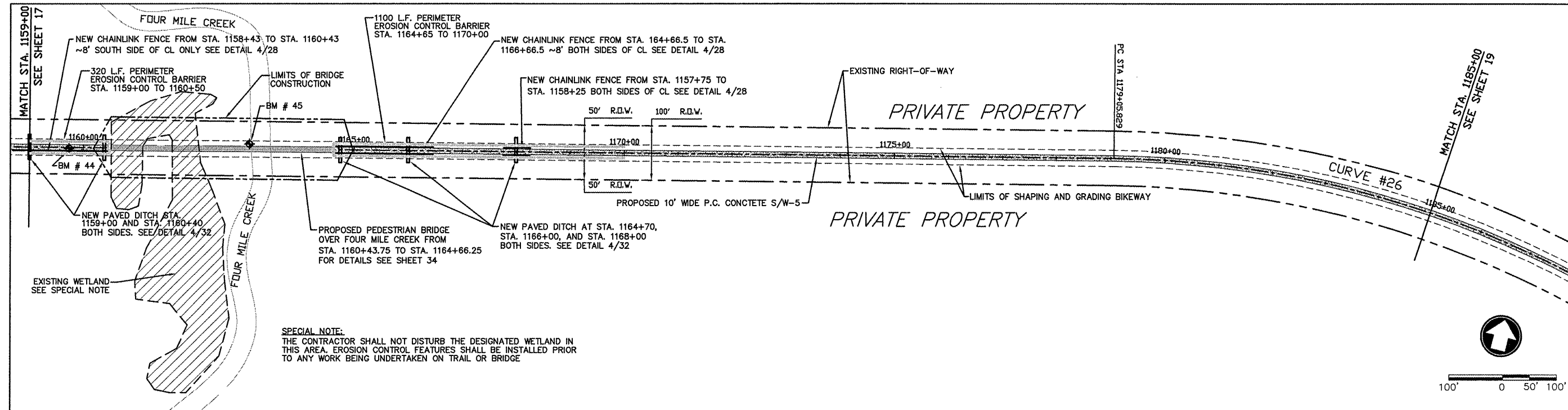


ROUTE	SECTION	COUNTY	TOTAL SHEETS	SHEET NO.
GRCDT	09-00038-00-BT	MASSAC	55	18
FROM STA. 1159+00 TO STA. 1185+00				
FEDERAL PROJECT NO. ARA-5045(009) CONTRACT NO. 99417				

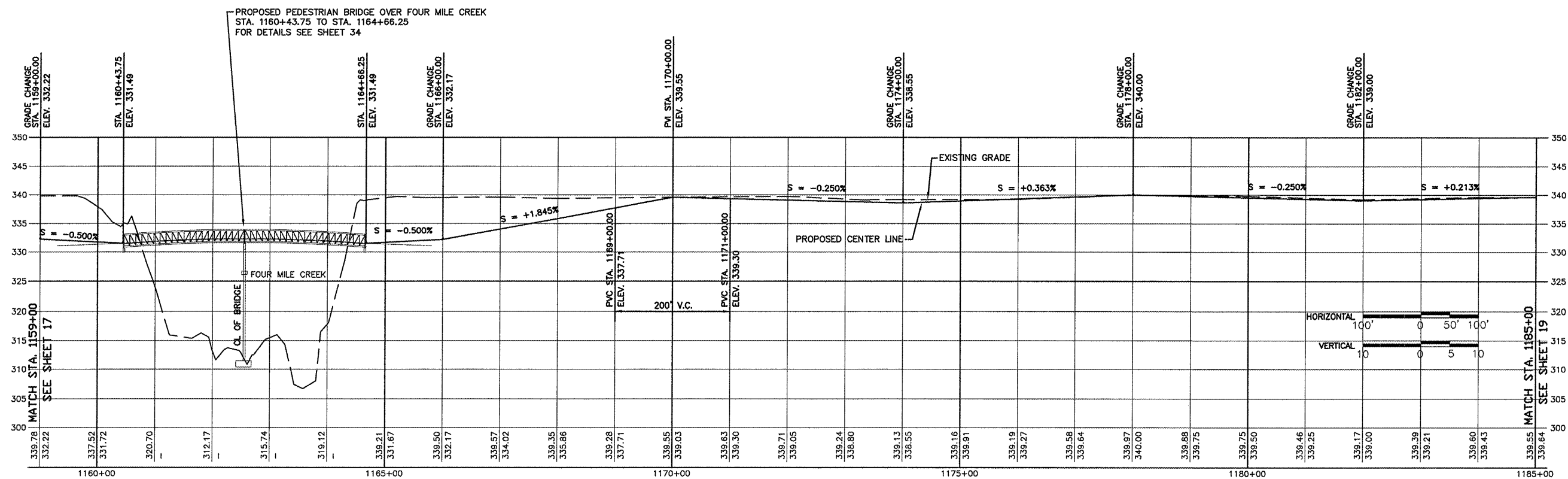


**FOUR MILE CREEK BRIDGE (BM #44) DESCRIPTION:**  
 1/2" X 24" REBAR, WITH PLASTIC SURVEY CAP MARKED "CITY OF METROPOLIS", C.P. # 44. ELEV. 339.12. LOCATED 2' RIGHT OF CENTERLINE OF RAILROAD BED AT STA. 1059+73.16.

**FOUR MILE CREEK BRIDGE (BM #45) DESCRIPTION:**  
 1/2" X 24" REBAR, WITH PLASTIC SURVEY CAP MARKED "CITY OF METROPOLIS", C.P. # 45. ELEV. 315.86. LOCATED 9' LEFT OF CENTERLINE OF RAILROAD BED AT STA. 1063+06.27.

**HORIZONTAL CURVE # 26 DATA**  
 PI STA. = 1186+05.829 R = 1897.672  
 PC STA. = 1179+05.829 T = 700.000  
 PT STA. = 1192+47.059 L = 1341.230  
 DELTA = 40°29'43" E = 124.989

ALONG OLD R.R. R.O.W.



FROM STA. 1159+00 TO 1185+00