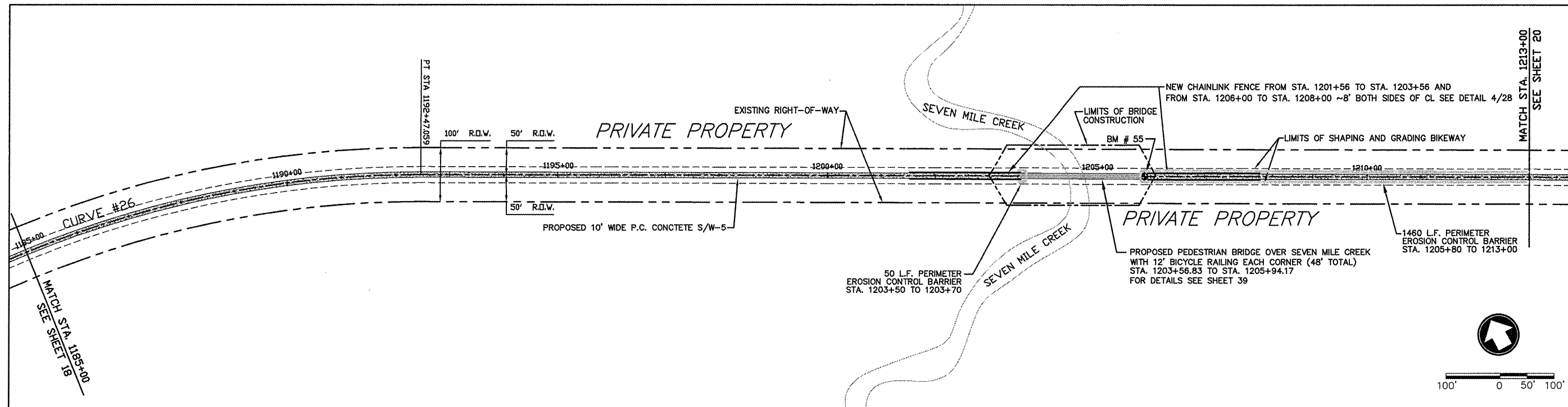


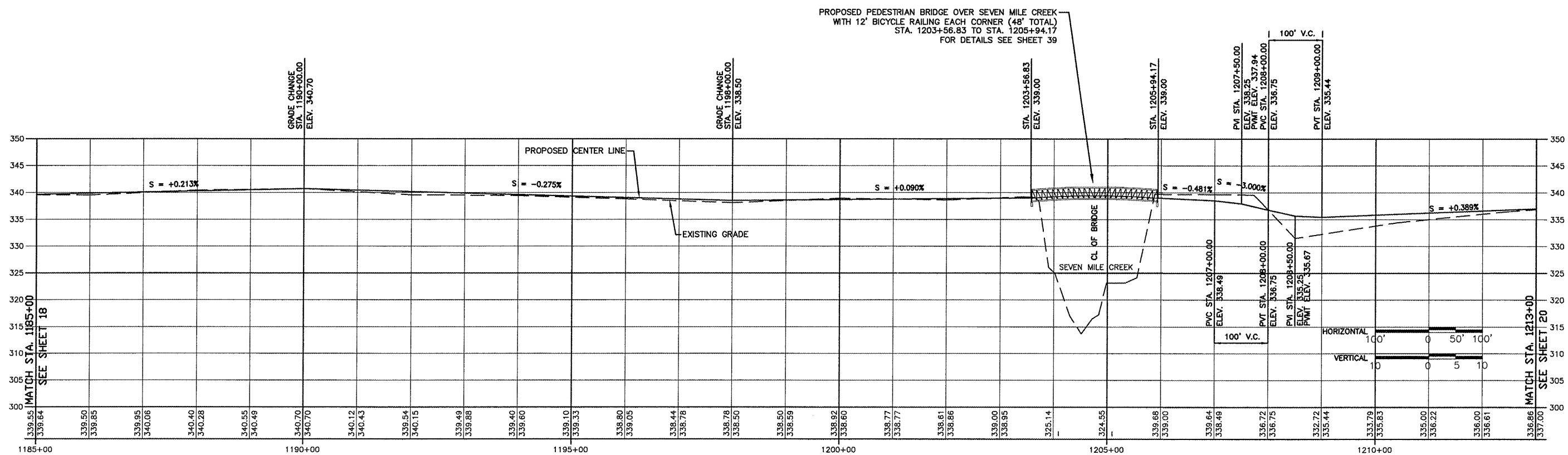
ROUTE	SECTION	COUNTY	TOTAL SHEETS	SHEET NO.
GRCDT	09-00038-00-BT	MASSAC	55	19
FROM STA. 1185+00 TO STA. 1213+00				
FEDERAL PROJECT NO. ARA-5045(009)			CONTRACT NO. 99417	



HORIZONTAL CURVE # 26 DATA
 PI STA. = 1186+05.829 R = 1897.672
 PC STA. = 1179+05.829 T = 700.000
 PT STA. = 1192+47.059 L = 1341.230
 DELTA = 40°29'43" E = 124.989

SEVEN MILE CREEK BRIDGE (BM #55) DESCRIPTION:
 1/2" X 24" REBAR, WITH PLASTIC SURVEY CAP MARKED "CITY OF METROPOLIS", C.P. (3-7) # 55, ELEV. 339.68, LOCATED ON CENTERLINE OF RAILROAD BED AT STA. 1205+87.88

ALONG OLD R.R. R.O.W.



FROM STA. 1185+00 TO 1213+00