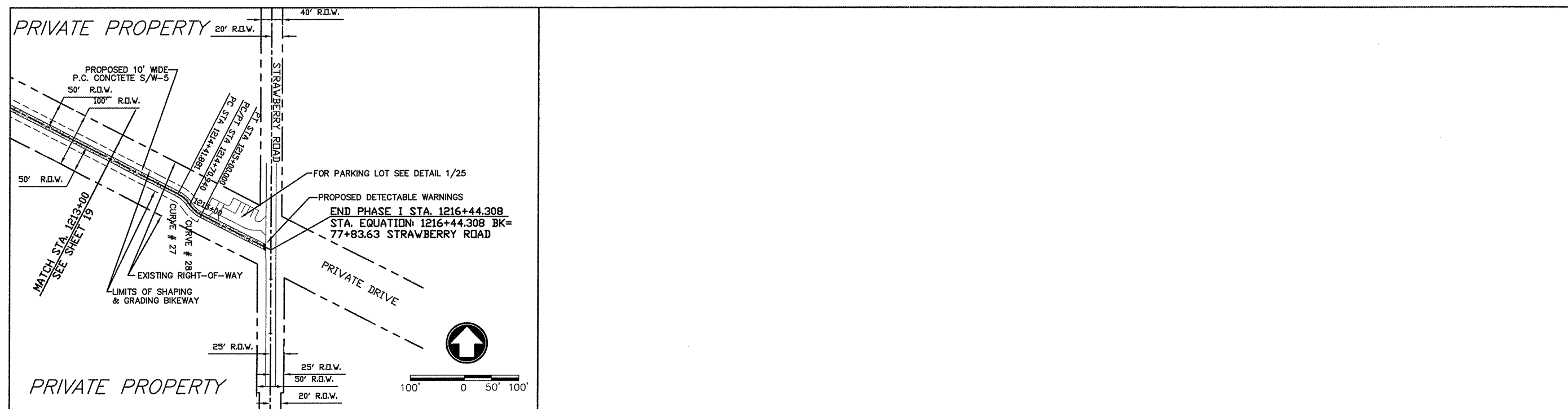


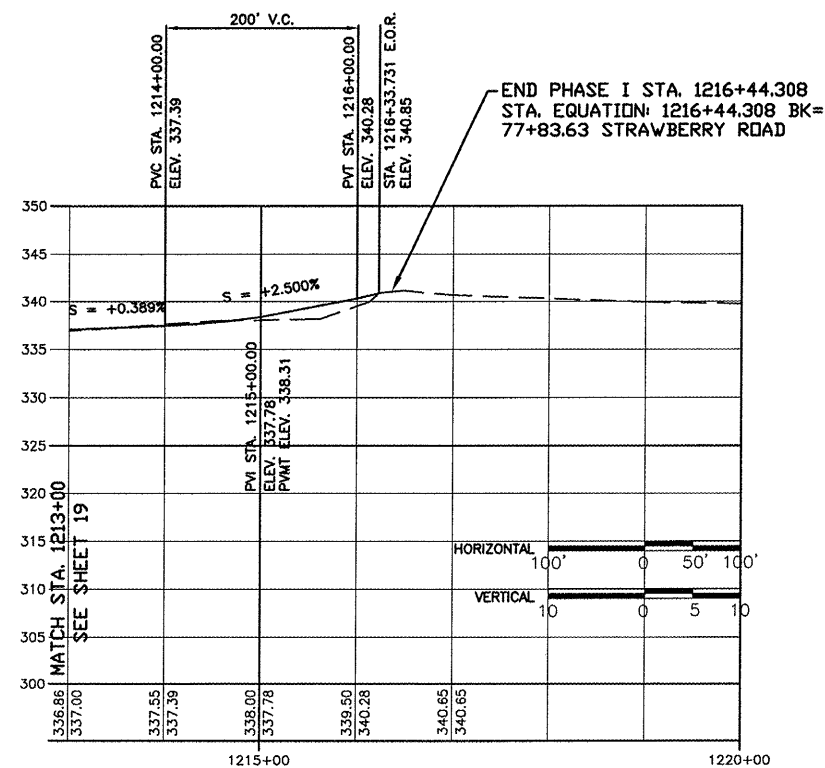
ROUTE	SECTION	COUNTY	TOTAL SHEETS	SHEET NO.
GRCDT09-00038-00-BT		MASSAC	55	20
FROM STA. 1213+00 TO STA. 1216+44.308				
FEDERAL PROJECT NO. ARA-5045(009)   CONTRACT NO. 99417				



HORIZONTAL CURVE # 27 DATA				HORIZONTAL CURVE # 28 DATA			
PT STA. = 1214+56.758	R = 55.000	PC STA. = 1214+85.818	R = 55.000	PT STA. = 1214+85.818	R = 55.000	PC STA. = 1214+85.818	R = 55.000
PC STA. = 1214+41.881	T = 14.878	PC STA. = 1214+70.940	T = 14.878	PC STA. = 1214+70.940	T = 14.878	PC STA. = 1214+70.940	T = 14.878
PT STA. = 1214+70.940	L = 29.060	PT STA. = 1215+00.000	L = 29.060	PT STA. = 1215+00.000	L = 29.060	PT STA. = 1215+00.000	L = 29.060
DELTA = 30°16'22"	E = 1.977	DELTA = 30°16'22"	E = 1.977	DELTA = 30°16'22"	E = 1.977	DELTA = 30°16'22"	E = 1.977

SEVEN MILE CREEK BRIDGE (BM #55) DESCRIPTION:  
 1/2" X 24" REBAR, WITH PLASTIC SURVEY CAP MARKED "CITY OF METROPOLIS". C.P. (3-7) # 55. ELEV. 339.68. LOCATED ON CENTERLINE OF RAILROAD BED AT STA. 1205+87.88

STRAWBERRY ROAD (SOUTH)



FROM STA. 1213+00 TO 1216+44.308