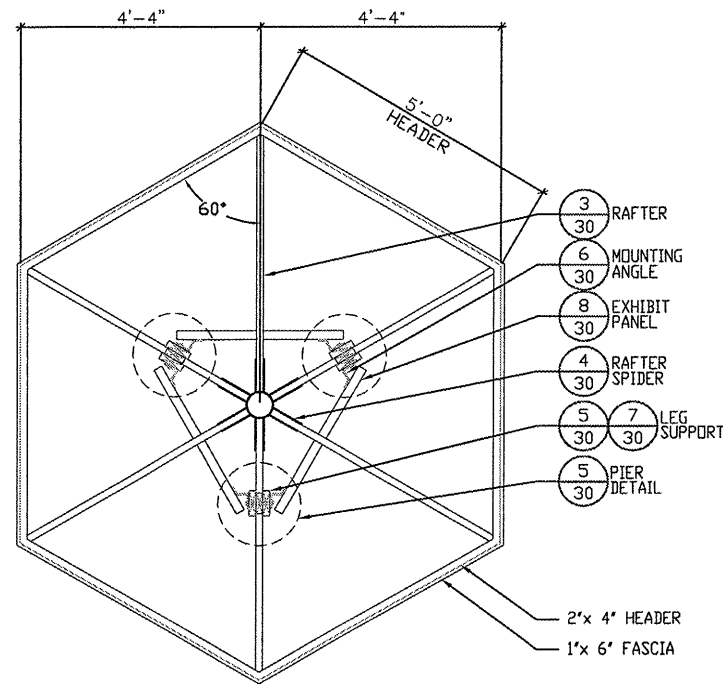
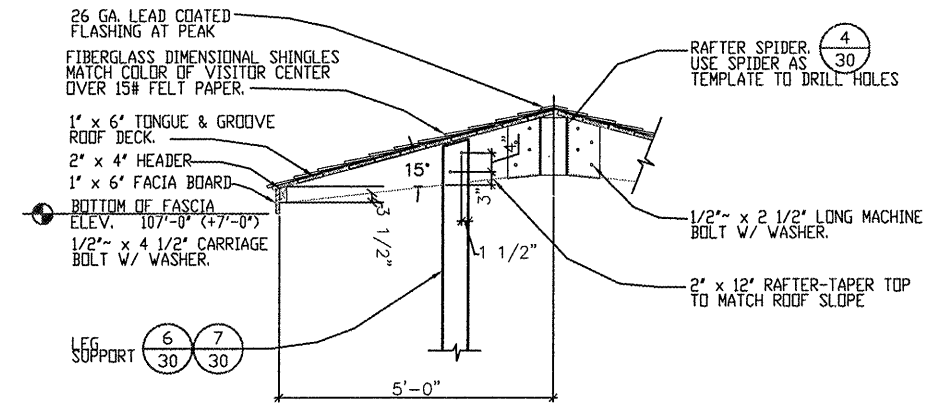


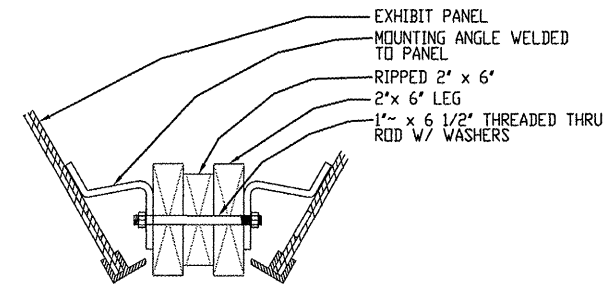
ROUTE	SECTION	COUNTY	TOTAL SHEETS	SHEET NO.
GRCDT09-00038-00-BT		MASSAC	55	30
FROM STA.	TO STA.			
FEDERAL PROJECT NO. ARA-5045(009)			CONTRACT NO. 99417	



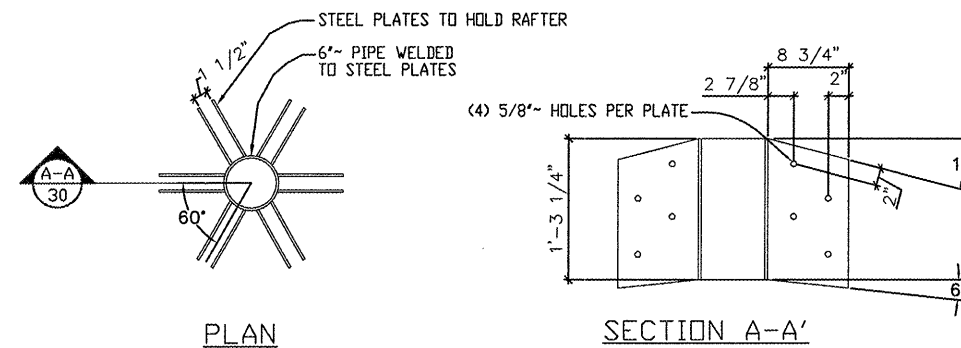
**1** DETAIL FRAMING PLAN  
SCALE: N.T.S.



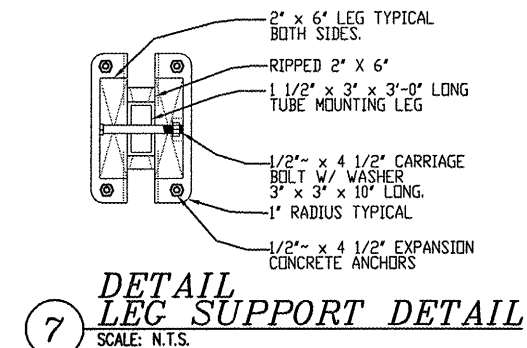
**3** DETAIL ROOF SECTION  
SCALE: N.T.S.



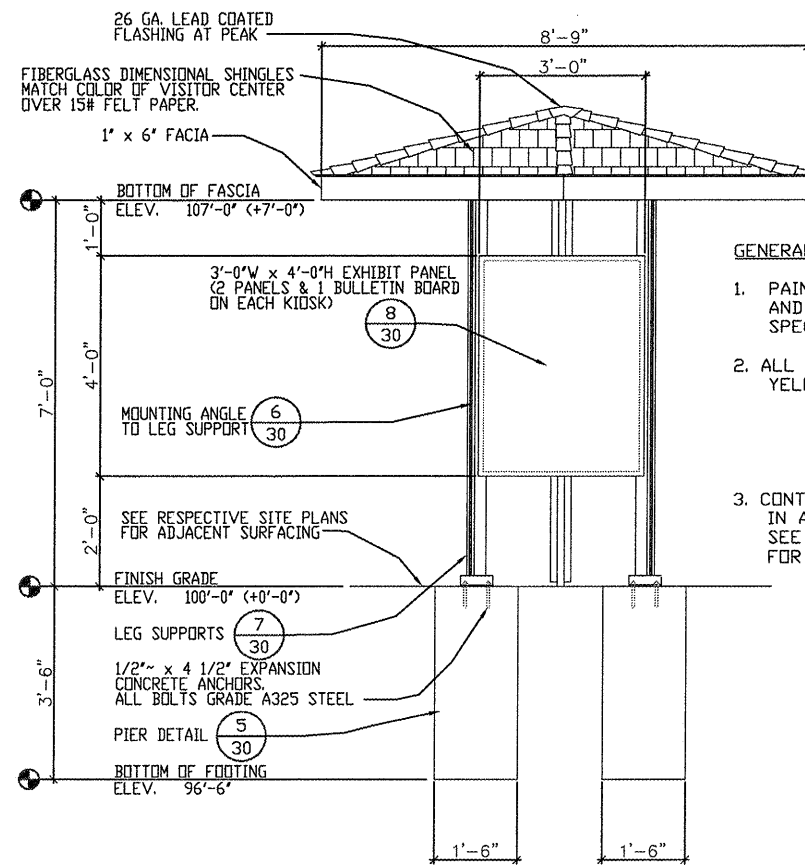
**6** DETAIL - MOUNTING ANGLE TO LEG SUPPORT  
SCALE: N.T.S.



**4** DETAIL RAFTER SPIDER  
SCALE: N.T.S.

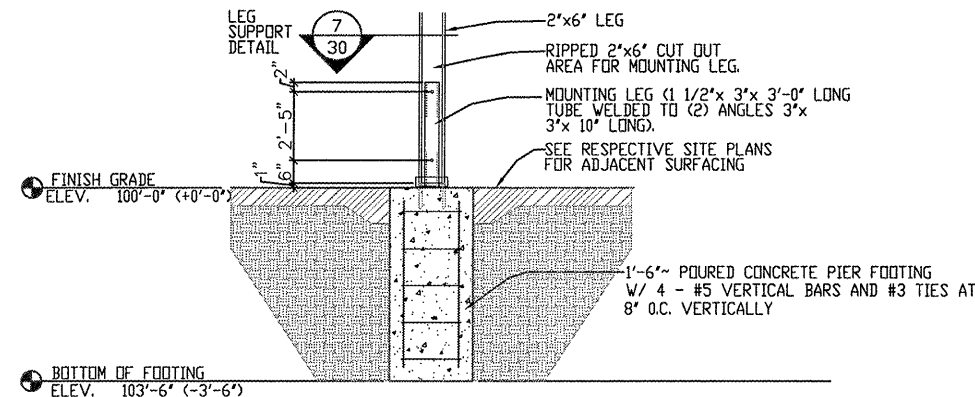


**7** DETAIL LEG SUPPORT DETAIL  
SCALE: N.T.S.

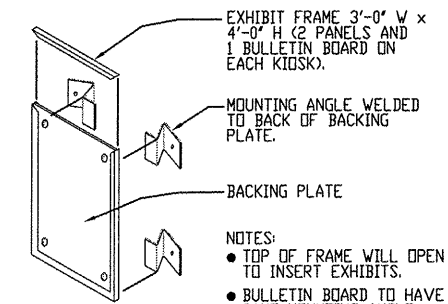


**2** DETAIL ELEVATION  
SCALE: N.T.S.

- GENERAL NOTES:**
1. PAINT ALL EXPOSED METAL PIECES AND STAIN ALL EXPOSED WOOD SEE SPECIAL PROVISIONS FOR FINISHES
  2. ALL WOOD #1 CCA TREATED SOUTHERN YELLOW PINE, EXCEPT AS NOTED.  
BF = 1650#  
CFPARA = 1750#  
CFPERP = 565#
  3. CONTRACTOR MAY OBTAIN METAL COMPONENTS IN A KIT OR FABRICATE FROM SHEET STOCK. SEE SPECIFICATION SPECIAL PROVISIONS FOR COMPONENT DESCRIPTION.



**5** DETAIL PIER  
SCALE: N.T.S.



**8** DETAIL EXHIBIT PANEL DETAIL  
SCALE: N.T.S.

NOTE: CONTRACTOR SHALL OBTAIN AND VERIFY ALL DIMENSIONS AND CONDITIONS AT JOB SITE AND BE FULLY RESPONSIBLE FOR SAME.