

STATE OF ILLINOIS
DEPARTMENT OF TRANSPORTATION

F.A.I. RTE.	SECTION	COUNTY	TOTAL SHEETS	SHEET NO.
80	(50-4VB)BP	LASALLE	15	1
		ILLINOIS	CONTRACT NO. 66L23	

INDEX OF SHEETS

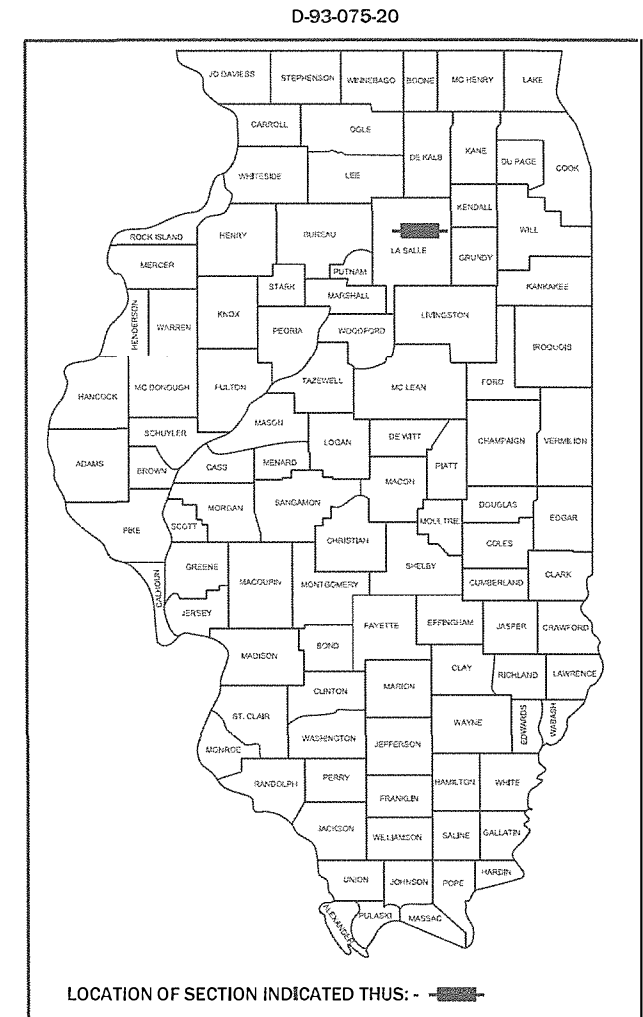
1. COVER SHEET
2. GENERAL NOTES
- 3 - 4. SUMMARY OF QUANTITIES
5. TYPICAL SECTIONS
6. SCHEDULES
7. TRAFFIC CONTROL AND PROTECTION, STANDARD 701400
8. TRAFFIC CONTROL AND PROTECTION, STANDARD 701402
- 9 - 15. EXISTING STRUCTURE DETAILS FOR STRUCTURE NO. 050-0011 (EB) AND STRUCTURE NO. 050-0012 (WB)

STANDARDS

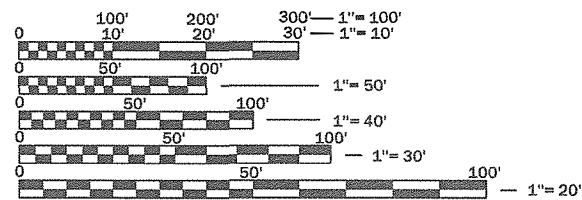
- | | |
|-----------|--|
| 000001-08 | STANDARD SYMBOLS, ABBREVIATIONS AND PATTERNS |
| 001006 | DECIMAL OF AN INCH AND OF A FOOT |
| 701101-05 | OFF-ROAD OPERATIONS, MULTILANE, 15' (4.5 m) TO 24" (600 mm) FROM PAVEMENT EDGE |
| 701106-02 | OFF-ROAD OPERATIONS, MULTILANE, MORE THAN 15' (4.5 m) AWAY |
| 701201-05 | LANE CLOSURE, 2L, 2W, DAY ONLY, FOR SPEEDS ≥ 45 MPH |
| 701301-04 | LANE CLOSURE, 2L, 2W, SHORT TIME OPERATIONS |
| 701426-09 | LANE CLOSURE, MULTILANE INTERMITTENT OR MOVING OPERATION, FOR SPEEDS ≥ 45 MPH |
| 701428-01 | TRAFFIC CONTROL, SETUP AND REMOVAL, FREEWAY/EXPRESSWAY |
| 701901-08 | TRAFFIC CONTROL DEVICES |
| 704001-08 | TEMPORARY CONCRETE BARRIER |
| 782006-01 | GUARDRAIL AND BARRIER WALL REFLECTOR MOUNTING DETAILS |

PROPOSED HIGHWAY PLANS

F.A.I. ROUTE 80 (I-80)
SECTION (50-4VB)BP
PROJECT NHPP-AS60(648)
BRIDGE PAINTING
LASALLE
C-93-109-20



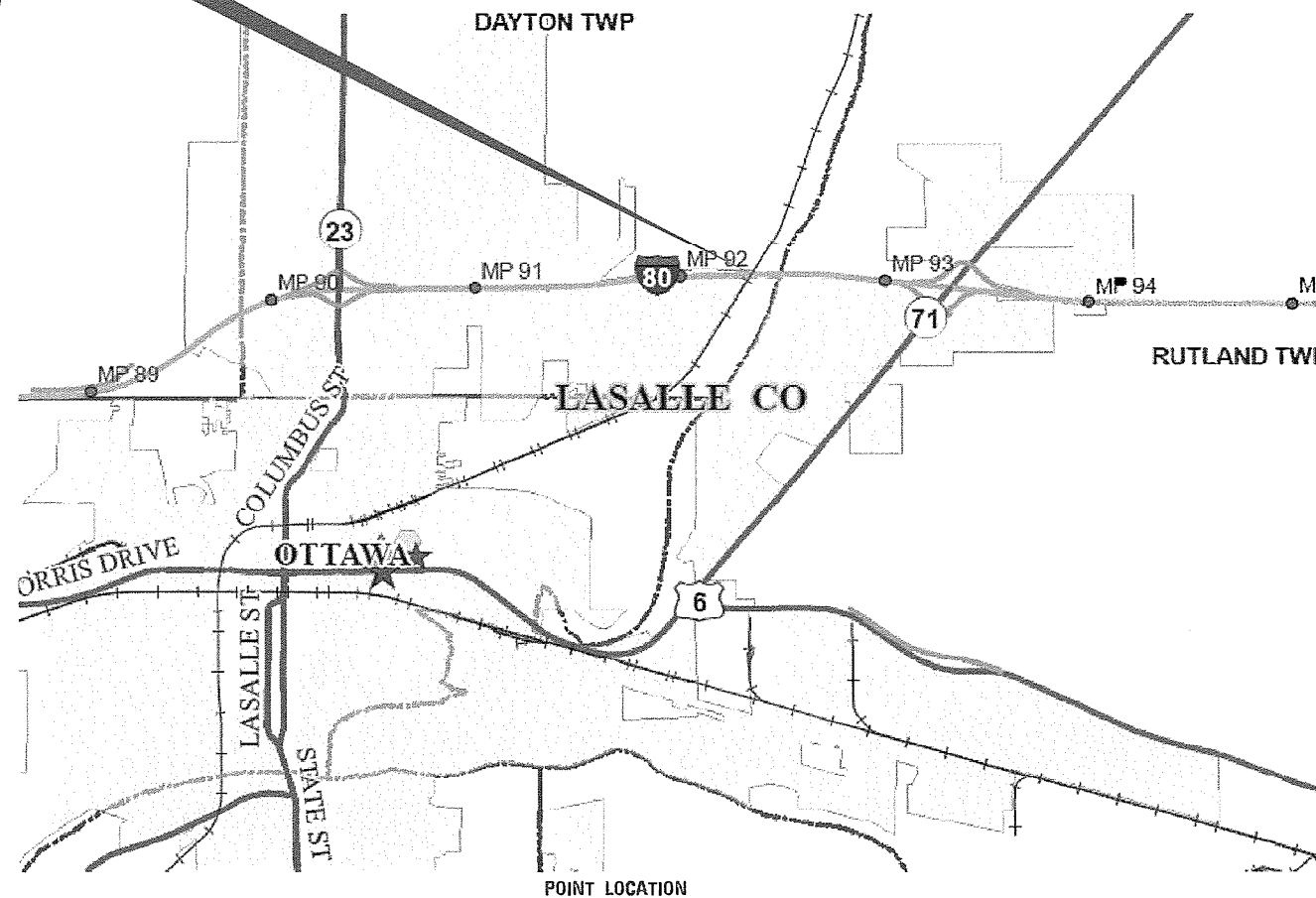
PROJECT LOCATION
STRUCTURE NO. 050-0011 (EB)
STRUCTURE NO. 050-0012 (WB)
CARRYING F.A.I. ROUTE 80 (I-80)
OVER THE ILLINOIS RAILWAY
2.0 MILES EAST OF IL ROUTE 23



FULL SIZE PLANS HAVE BEEN PREPARED USING STANDARD ENGINEERING SCALES. REDUCED SIZED PLANS WILL NOT CONFORM TO STANDARD SCALES. IN MAKING MEASUREMENTS ON REDUCED PLANS, THE ABOVE SCALES MAY BE USED.

J.U.L.I.E.
JOINT UTILITY LOCATION INFORMATION FOR EXCAVATION
1-800-892-0123
OR 811

PROJECT ENGINEER JOE KANNE P.E.
UNIT CHIEF RON WOODSHANK
DISTRICT 3 NO. (815) 434-6131
CONTRACT NO. 66L23



FUNCTIONAL CLASSIFICATION
URBAN
INTERSTATE
F.A.I. ROUTE 80 (I-80)
2019 ADT = 27100
P.V. 59.0% S.U. 4.5% M.U. 36.5%

STATE OF ILLINOIS
DEPARTMENT OF TRANSPORTATION

SUBMITTED Dec 09, 2020

[Signature]
REGIONAL ENGINEER

January 29, 2021

[Signature]
ENGINEER OF DESIGN AND ENVIRONMENT

January 29, 2021

[Signature]
DIRECTOR OF HIGHWAYS PROJECT IMPLEMENTATION 13

PRINTED BY THE AUTHORITY
OF THE STATE OF ILLINOIS

GENERAL NOTES

PLAN DIMENSIONS AND DETAILS RELATIVE TO EXISTING PLANS ARE SUBJECT TO NOMINAL CONSTRUCTION VARIATIONS. THE CONTRACTOR SHALL FIELD VERIFY EXISTING DIMENSIONS AND DETAILS AFFECTING NEW CONSTRUCTION AND MAKE NECESSARY APPROVED ADJUSTMENTS PRIOR TO CONSTRUCTION OR ORDERING OF MATERIALS. SUCH VARIATIONS SHALL NOT BE CAUSE FOR ADDITIONAL COMPENSATION FOR A CHANGE IN SCOPE OF WORK; HOWEVER, THE CONTRACTOR WILL BE PAID FOR THE QUANTITY ACTUALLY FURNISHED AT THE UNIT PRICE BID FOR THE WORK.

STRUCTURE NO. 050-0011 (EB) SHALL BE DESIGNATED AS "LOCATION 1".

STRUCTURE NO. 050-0012 (WB) SHALL BE DESIGNATED AS "LOCATION 2".

THE SSPC-QP1 AND SSPC-QP1 "PAINTING CONTRACTOR CERTIFICATIONS" WILL BE REQUIRED FOR THIS PROJECT.

THE CONTRACTOR SHALL FURNISH TWO AIR MONITORS AND INSTALL THEM AT THE LOCATIONS DESIGNATED BY THE ENGINEER.

CLEANING AND PAINTING OF EXISTING STRUCTURAL STEEL SHALL BE AS SPECIFIED IN THE SPECIAL PROVISION FOR "CLEANING AND PAINTING EXISTING STEEL STRUCTURES" AND AS SPECIFIED BELOW.

- a) ALL EXISTING STRUCTURAL STEEL, (INCLUDING BEAMS/GIRDERS, DIAPHRAGMS, CROSS/LATERAL FRAMING, STEEL COMPONENTS OF BEARINGS, DRAINS, ANGLE BRACKETS, STEEL HANDRAILS (WHEN PRESENT) SHALL BE CLEANED PER THE REQUIREMENTS OF "NEAR WHITE BLAST CLEANING - SSPC-SP-10".
 - b) ALL EXISTING STRUCTURAL STEEL, (INCLUDING BEAMS/GIRDERS, DIAPHRAGMS, CROSS/LATERAL FRAMING, STEEL COMPONENTS OF BEARINGS, DRAINS, ANGLE BRACKETS, STEEL HANDRAILS (WHEN PRESENT) SHALL BE CLEANED PER THE REQUIREMENTS OF "PAINT SYSTEM 1-OZ/E/U".
- 1) THE FINAL FINISH COAT FOR ALL INTERIOR STRUCTURAL STEEL SHALL BE "GRAY, MUNSELL NO. 5B 7/1".
 - 2) FINISH COAT FOR EXTERIOR FACE, BOTTOM FLANGE AND BEARING ASSEMBLIES OF THE FASCIA BEAMS SHALL BE "GREEN, MUNSELL NO. 7.5G 1/2".

THE CONTRACTOR SHALL BE REQUIRED TO SECURE WASTE CONTAINERS THAT REMAIN ON THE JOB SITE. THIS WILL ENTAIL THAT ALL WASTE CONTAINERS CAN NOT BE MOVED OR OPENED DURING NON-WORKING HOURS.

WORKING DAYS SHALL BE CHARGED UNTIL THE CONTRACTOR/SUBCONTRACTOR LISCENSED TO DISPOSE OF NON-LEAD PAINT RESIDUES HAS REMOVED THE WASTE MATERIAL FROM THE JOB SITE ACCORDING TO ALL FEDERAL, STATE AND LOCAL LAWS AND ORDINANCES. IF THE LISCENSED CONTRACTOR OR SUBCONTRACTOR FAILS TO DISPOSE OF THE NON-LEAD PAINT RESIDUES ON OR BEFORE THE SPECIFIED COMPLETION DATE, LIQUIDATED DAMAGES SHALL BE CHARGED PER CALENDAR DAY ACCORDING TO ARTICLE 108.09 OF THE STANDARD SPECIFICATIONS UNTIL SUCH TIME THAT ALL PAINT RESIDUE MATERIALS HAVE BEEN PROPERLY REMOVED AND DISPOSED OF.

COMMITMENTS

THE RESIDENT ENGINEER/TECHNICIAN SHALL COORDINATE WITH THE BUREAU OF OPERATIONS FOR THE PLACEMENT OF "REAL TIME TRAFFIC CONTROL DEVICES" DURING CONSTRUCTION OPERATIONS.

STATE OF ILLINOIS
DEPARTMENT OF TRANSPORTATION
DISTRICT THREE
AS BUILT INFORMATION

STATE OF ILLINOIS
DEPARTMENT OF TRANSPORTATION
DISTRICT THREE

SUPERVISING CONSTRUCTION FIELD ENGINEER

PREPARED BY: _____
DISTRICT STUDIES & PLANS ENGINEER

RESIDENT ENGINEER / TECHNICIAN

DATE: _____

START & END DATES
OF CONSTRUCTION:

INSPECTORS:

EXAMINED BY: _____
DISTRICT CONSTRUCTION ENGINEER

DISTRICT MATERIALS ENGINEER

DISTRICT OPERATIONS ENGINEER

**STATE OF ILLINOIS
DEPARTMENT OF TRANSPORTATION**

GENERAL NOTES

SCALE: SHEET 1 OF 1 SHEETS STA. TO STA.

F.A.I. RTE.	SECTION	COUNTY	TOTAL SHEETS	SHEET NO.
80	(50-4VB)BP	LASALLE	15	2
CONTRACT NO. 66L23				
		ILLINOIS	FED. AID PROJECT	

CONSTRUCTION CODE
 BRIDGE PAINTING
 90% FED. 10% STATE
 BRIDGE
 0047
 RURAL

CODE NO.	ITEM	UNIT	TOTAL QUANTITY	
67100100	MOBILIZATION	L SUM	1	1
70100207	TRAFFIC CONTROL AND PROTECTION, STANDARD 701402	EACH	1	1
70107025	CHANGEABLE MESSAGE SIGN	CAL DA	14	14
70400100	TEMPORARY CONCRETE BARRIER	FOOT	400	400
70600250	IMPACT ATTENUATORS, TEMPORARY (NON- REDIRECTIVE), TEST LEVEL 3	EACH	1	1
* 78008210	POLYUREA PAVEMENT MARKING TYPE I - LINE 4"	FOOT	1441	1441
78300202	PAVEMENT MARKING REMOVAL - WATER BLASTING	SQ FT	722	722
X2700001	TEMPORARY RUMBLE STRIPS (SPECIAL)	EACH	4	4
* X2700027	PREFORMED PLASTIC PAVEMENT MARKING, TYPE D - LINE 8" CONTRAST	FOOT	500	500
X5067501	BRIDGE CLEANING AND PAINTING WARRANTY NUMBER 1	L SUM	1	1
X5067502	BRIDGE CLEANING AND PAINTING WARRANTY NUMBER 2	L SUM	1	1
X7830076	GROOVING FOR RECESSED PAVEMENT MARKING 9"	FOOT	500	500
Z0007101	CONTAINMENT AND DISPOSAL OF LEAD PAINT CLEANING RESIDUES NO. 1	L SUM	1	1
Z0007102	CONTAINMENT AND DISPOSAL OF LEAD PAINT CLEANING RESIDUES NO. 2	L SUM	1	1

*= SPECIALTY ITEM

MODEL: Default
 FILE: M:\GIS\Projects\GIS\DOT\Documents\DOT_Offices\District 3\Project\0366L23\0366L23-cover.dwg

USER NAME = woodshankr	DESIGNED -	REVISED -
PLOT SCALE = 100.0000' / in.	DRAWN -	REVISED -
PLOT DATE = 12/1/2020	CHECKED -	REVISED +
	DATE -	REVISED +

STATE OF ILLINOIS
 DEPARTMENT OF TRANSPORTATION

SUMMARY OF QUANTITIES

SCALE: SHEET 1 OF 2 SHEETS STA. TO STA.

F.A.I. RTE.	SECTION	COUNTY	TOTAL SHEETS	SHEET NO.
80	(50-4VB)BP	LASALLE	15	3
ILLINOIS FED. AID PROJECT			CONTRACT NO. 66L23	

CODE NO.	ITEM	UNIT	TOTAL QUANTITY	CONSTRUCTION CODE	
				BRIDGE PAINTING 90% FED. 10% STATE	BRIDGE 0047 RURAL
Z0010501	CLEANING AND PAINTING STEEL BRIDGE NO. 1	L SUM	1		1
Z0010502	CLEANING AND PAINTING STEEL BRIDGE NO. 2	L SUM	1		1

MODEL: Default
FILE: \\nas101.pw.state.il.us\pub\lansroom\data\illinois.gov\PW\DOT\Documents\DOT_Offices\District_3\Projects\0366L23\CADD\0366L23-cover.dgn

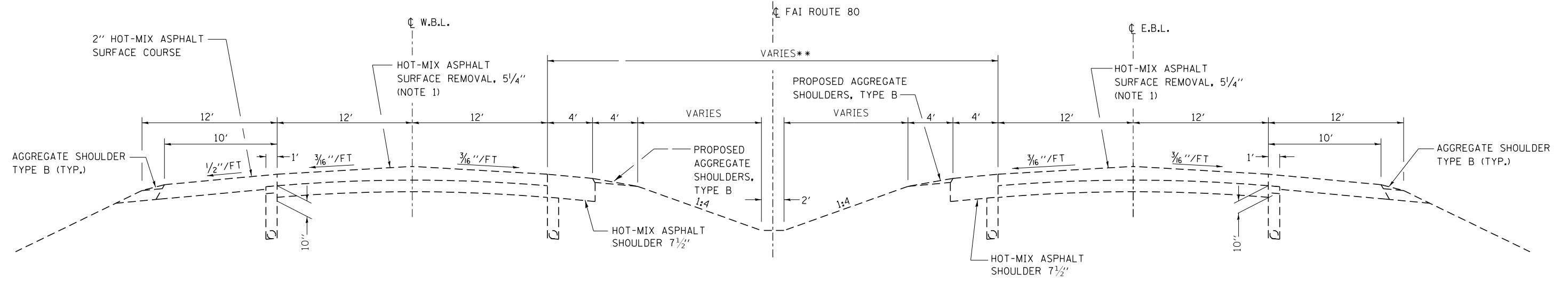
USER NAME = woodshankrl	DESIGNED -	REVISED -
	DRAWN -	REVISED -
PLOT SCALE = 100.0000 ' / in.	CHECKED -	REVISED -
PLOT DATE = 12/1/2020	DATE -	REVISED -

**STATE OF ILLINOIS
DEPARTMENT OF TRANSPORTATION**

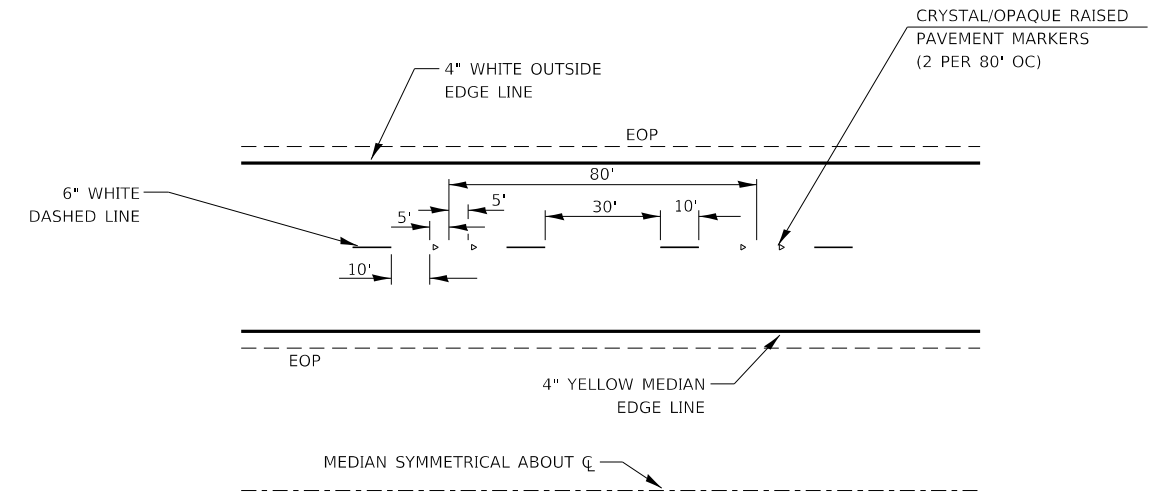
SUMMARY OF QUANTITIES

SCALE: SHEET 2 OF 2 SHEETS STA. TO STA.

F.A.I. RTE.	SECTION	COUNTY	TOTAL SHEETS	SHEET NO.
80	(50-4VB)BP	LASALLE	15	4
			CONTRACT NO. 66L23	
			ILLINOIS FED. AID PROJECT	



PROPOSED TYPICAL SECTION 2



TYPICAL PAVEMENT MARKINGS

MODEL: Default
 FILE: h:\mhc\p\pub\harcam.dwg
 PROJECT: 0366L23\CADD\DATA\0366L23-cover.dgn
 OFFICE: D:\dot\Documents\DOT_Offices\Dir\ctc_3\Projects\0366L23\CADD\DATA\0366L23-cover.dgn

USER NAME = woodshankrl	DESIGNED -	REVISED -
	DRAWN -	REVISED -
PLOT SCALE = 100.0000' / in.	CHECKED -	REVISED -
PLOT DATE = 12/1/2020	DATE -	REVISED -

**STATE OF ILLINOIS
DEPARTMENT OF TRANSPORTATION**

TYPICAL SECTIONS	
SCALE:	SHEET 1 OF 1 SHEETS STA. TO STA.

F.A.I. RTE.	SECTION	COUNTY	TOTAL SHEETS	SHEET NO.
80	(50-4VB)BP	LASALLE	15	5
CONTRACT NO. 66L23				
ILLINOIS FED. AID PROJECT				

**SCHEDULE
TRAFFIC CONTROL AND PROTECTION**

LOCATION	TRAFFIC CONTROL AND PROTECTION STANDARD 701402	TEMPORARY RUMBLE STRIPS (SPECIAL)	CHANGEABLE MESSAGE SIGN	TEMPORARY CONCRETE BARRIER	IMPACT ATTENUATORS, TEMPORARY (NON-REDIRECTIVE), TEST LEVEL 3
	EACH	EACH	CAL DA	FOOR	EACH
STRUCTURE NO. 050-0011 (EB LANES)	1	4	14	400	1

**SCHEDULE
PAVEMENT MARKING**

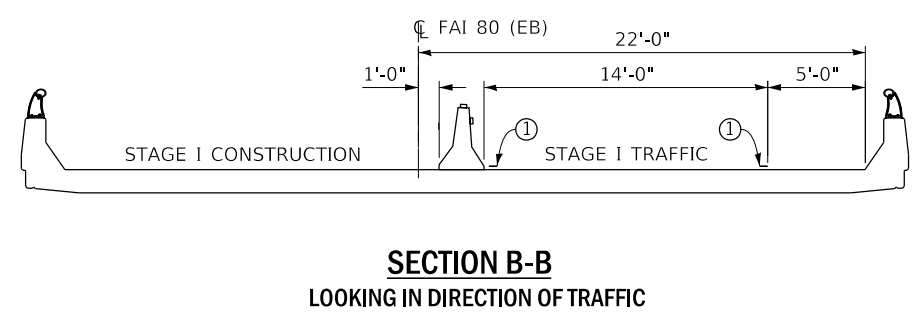
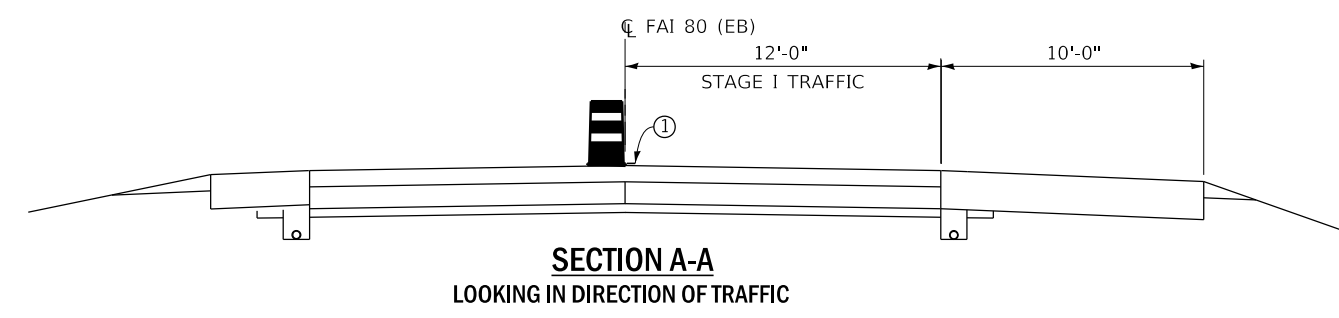
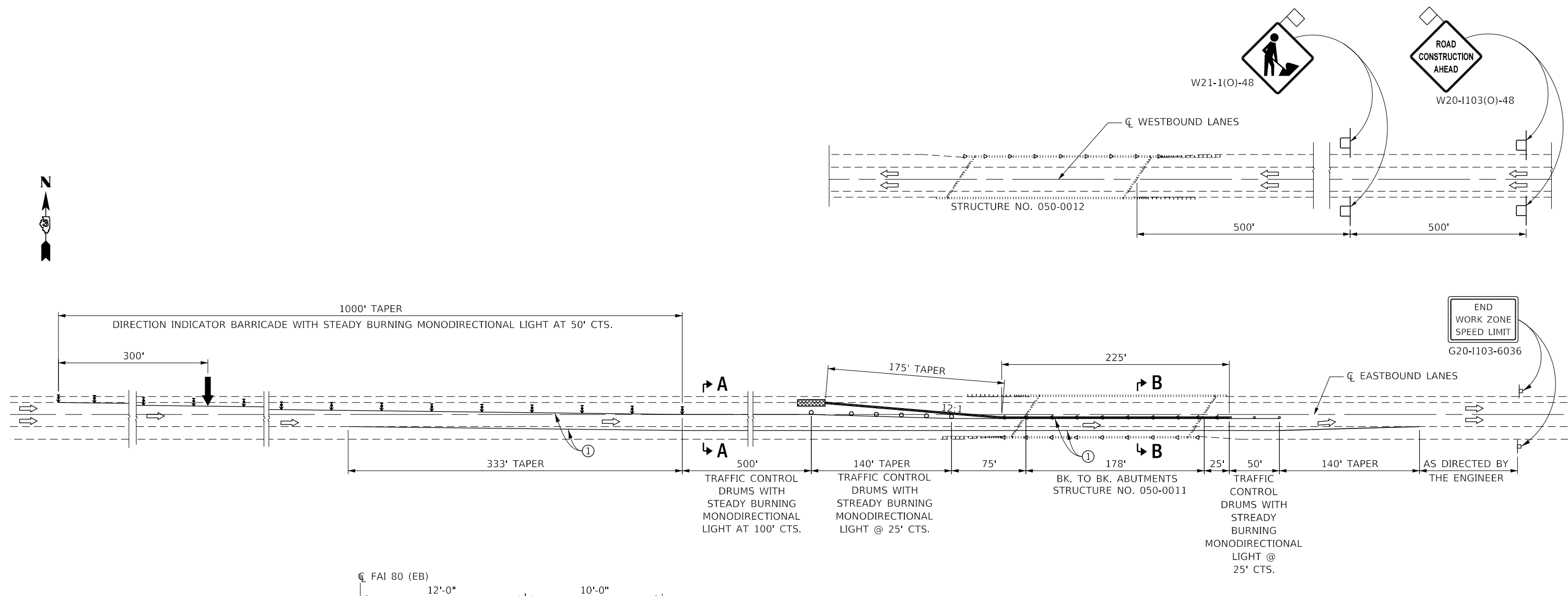
LOCATION	PAVEMENT MARKING REMOVAL WATERBLASTING	POLYUREA PAVEMENT MARKING TYPE I LINE 4"	PREFORMED PLASTIC PAVEMENT MARKING, TYPE D, LINE 8" CONTRAST	GROOVING FOR RECESSED PAVEMENT MARKING 9"
	EACH	FOOT	FOOT	FOOT
STRUCTURE NO. 050-0011 (EB LANES)	722	1441	500	500

**SCHEDULE
CLEANING AND PAINTING**

LOCATION	BRIDGE CLEANING AND PAINTING STEEL BRIDGE NO. 1	BRIDGE CLEANING AND PAINTING STEEL BRIDGE NO. 2	CONTAINMENT AND DIAPOSAL OF LEAD PAINT CLEANING RESIDUES NO. 1	CONTAINMENT AND DIAPOSAL OF LEAD PAINT CLEANING RESIDUES NO. 2	BRIDGE CLEANING AND PAINTING WARRANTY NUMBER 1	BRIDGE CLEANING AND PAINTING WARRANTY NUMBER 1
	L SUM	L SUM	L SUM	L SUM	L SUM	L SUM
STRUCTURE NO. 050-0011 (EB LANES)	1		1		1	
STRUCTURE NO. 050-0012 (WB LANES)		1		1		1
TOTALS	1	1	1	1	1	1

MODEL: Default
FILE: \\nas101.psu.edu\pub\lanroom\data\illinois.gov\PIWDOT\Documents\DOT_Offices\District 3\Projects\0366L23\CADD\0366L23-cover.dgn

MODEL: Default
 FILE: \\nas101.psw.ibm.com\data\illinois\pww\DOT\Documents\DOT_Offices\Dir\trct_3\Projects\0366L23\CADD\0366L23-cover.dgn



SYMBOLS

- ARROW BOARD
- WORK AREA
- SIGN
- DIRECTION INDICATOR BARRICADE WITH STEADY BURN MONODIRECTIONAL LIGHT
- TRAFFIC CONTROL DRUM, WITH STEADY BURN MONODIRECTIONAL LIGHT
- TEMPORARY CONCRETE BARRIER
- MONODIRECTIONAL BARRIER WALL/GUARDRAIL MARKERS AT 25' CTS. MARKERS ON RIGHT SHALL BE CRYSTAL AND MARKERS ON LEFT SHALL BE AMBER.
- IMPACT ATTENUATOR

① TEMPORARY PAVEMENT MARKING TAPE SHALL BE PLACED THROUGHOUT THE TAPER AND ALONG-SIDE THE WORK AREA. THE RIGHT EDGE LINE SHALL BE WHITE AND THE LEFT EDGE LINE SHALL BE YELLOW.

GENERAL NOTES

THIS STANDARD IS USED WHERE AT ANY TIME ANY VEHICLE, EQUIPMENT, WORKERS OR THEIR ACTIVITIES WILL ENCROACH ON THE PAVEMENT OR ON THE SHOULDER WITHIN 24" OF THE EDGE OF PAVEMENT FOR DAYLIGHT OPERATION EXCEEDING ONE DAY AND WHERE TEMPORARY CONCRETE BARRIER IS UTILIZED.

THIS STANDARD MUST ALWAYS BE USED IN COMBINATION WITH STANDARD 701400.

TEMPORARY CONCRETE BARRIER SHALL BE ACCORDING TO STANDARD 704001.

NOT TO SCALE

USER NAME = woodshankr	DESIGNED -	REVISED -
	DRAWN -	REVISED -
PLOT SCALE = 100.0000' / in.	CHECKED -	REVISED -
PLOT DATE = 12/1/2020	DATE -	REVISED -

STATE OF ILLINOIS
DEPARTMENT OF TRANSPORTATION

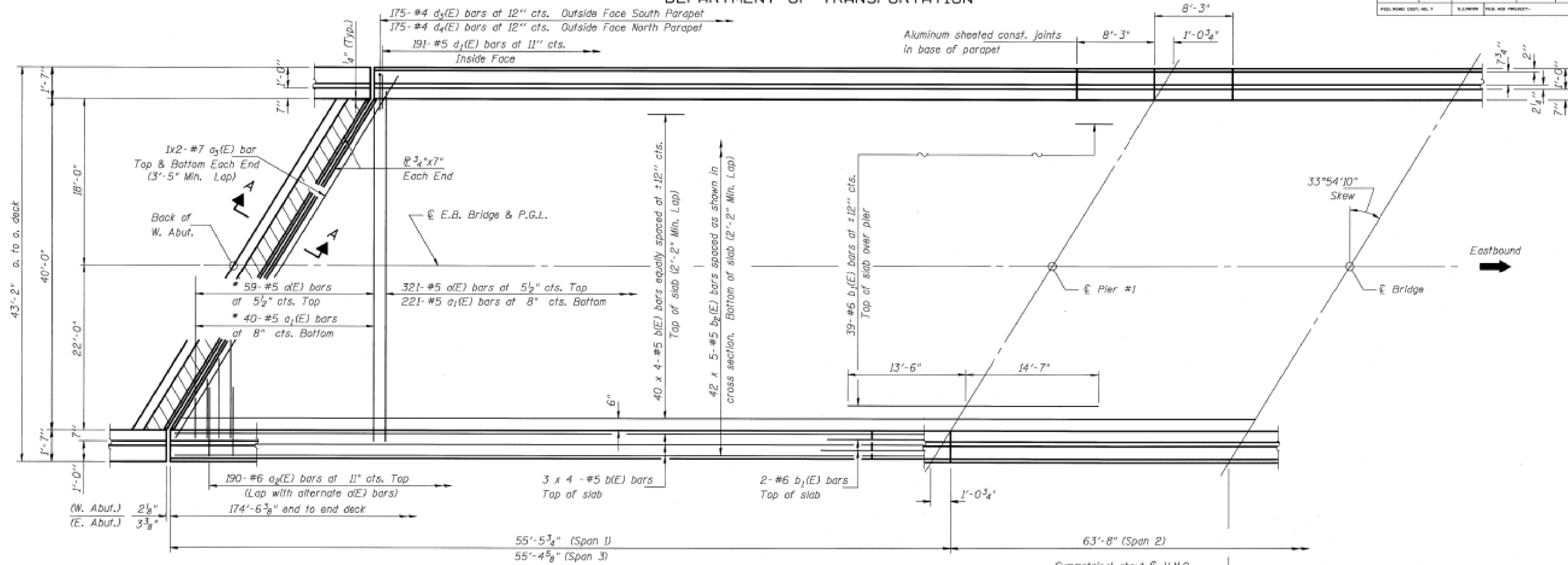
TRAFFIC CONTROL AND PROTECTION,
STANDARD 701402

SCALE: SHEET 1 OF 1 SHEETS STA. TO STA.

F.A.I. RTE.	SECTION	COUNTY	TOTAL SHEETS	SHEET NO.
80	(50-4VB)BP	LASALLE	15	8
CONTRACT NO. 66L23				
ILLINOIS FED. AID PROJECT				

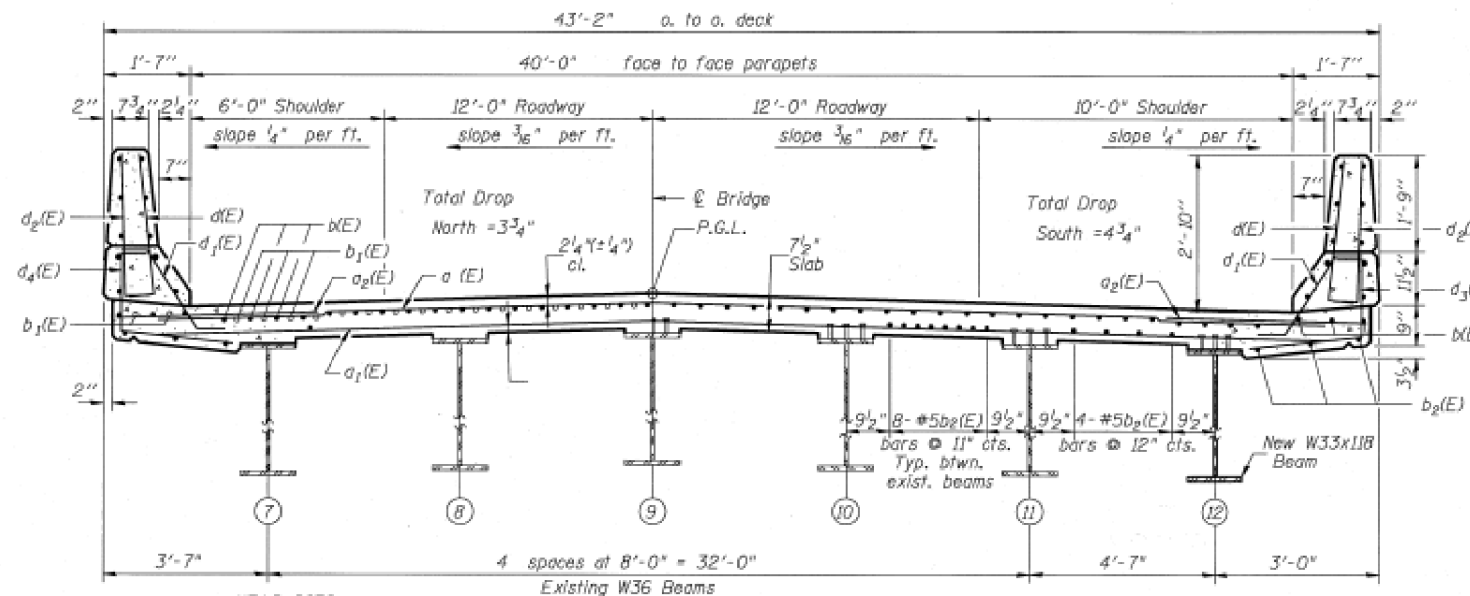
STATE OF ILLINOIS
DEPARTMENT OF TRANSPORTATION

ROUTE NO.	SECTION	COUNTY	DATE	SHEET NO.
80	(50-4) VBR	LA SALLE	9/1	34
SHEET NO. 51 OF 828 SHEETS				



* Order $a(E)$ & $a_1(E)$ bars full length. Cut to fit skew and use remainder of bars in opposite end.

HALF PLAN



CROSS SECTION
(Looking East)

Notes: See Sheet #S10 for superstructure details and Bill of Material.
Reinforcement bars designated (E) shall be epoxy coated.
Bars indicated thus 42 x 5-#5 etc. indicates 42 lines of bars with 5 lengths per line.
See Sheet #S10 for parapet reinforcement.
Hatched area to be poured after Superstructure forms have been removed. Quantity of concrete to be included with Class X Concrete Superstructure.

SUPERSTRUCTURE PLAN - E.B.
F.A.I. RTE. 80 SEC. (50-4)VBR
LA SALLE COUNTY
STA. 590+86.53
S.N. 050-0011 (EASTBOUND)

BOWMAN, BARRETT & ASSOCIATES INC.
CONSULTING ENGINEERS
233 N. MICHIGAN AVENUE
CHICAGO, ILLINOIS 60601



SCALE: NOT TO SCALE DRAWN BY: EBP
DATE: 10-25-93 CHECKED BY: RDC & SF

DESIGNED	
CHECKED	
DRAWN	
CHECKED	

USER NAME = woodshankr	DESIGNED -	REVISED -
	DRAWN -	REVISED -
PLOT SCALE = 100,0000' / in.	CHECKED -	REVISED -
PLOT DATE = 12/1/2020	DATE -	REVISED -

STATE OF ILLINOIS
DEPARTMENT OF TRANSPORTATION

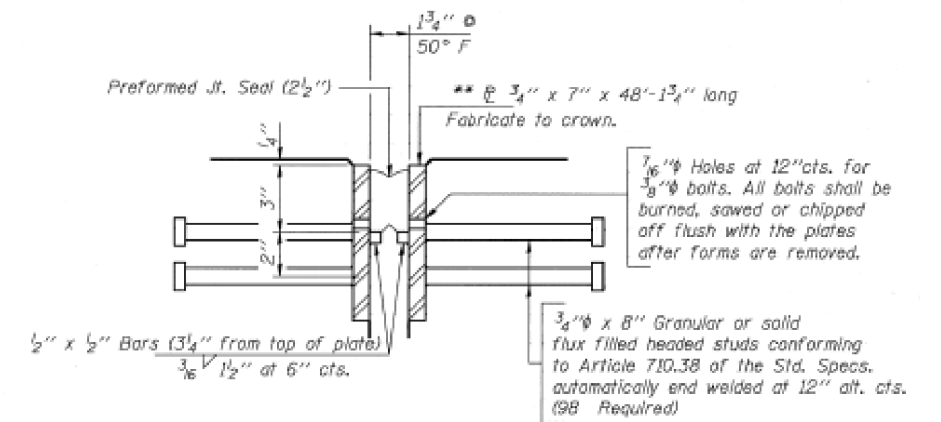
EXISTING STRUCTURE PLANS
FOR STRUCTURE NO. 050-0011 (EB) & STRUCTURE NO. 050-0012 (WB)
"FOR INFORMATION ONLY"

SCALE: SHEET 3 OF 7 SHEETS STA. TO STA.

F.A.I. RTE.	SECTION	COUNTY	TOTAL SHEETS	SHEET NO.
80	(50-4) VBR	LASALLE	15	11
CONTRACT NO. 66L23				
ILLINOIS FED. AID PROJECT				

STATE OF ILLINOIS
DEPARTMENT OF TRANSPORTATION

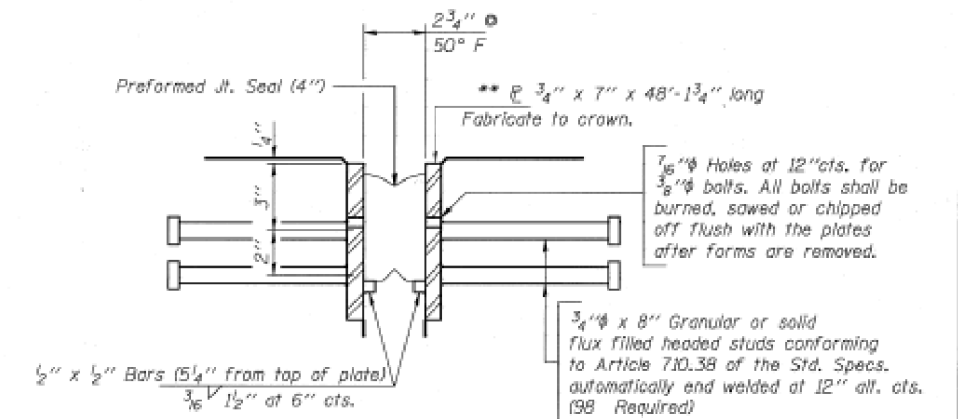
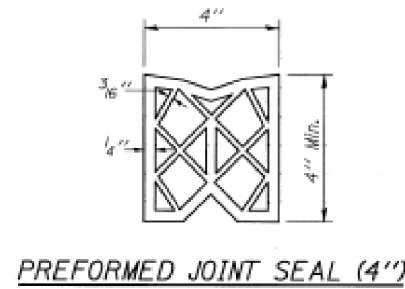
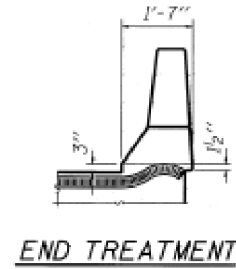
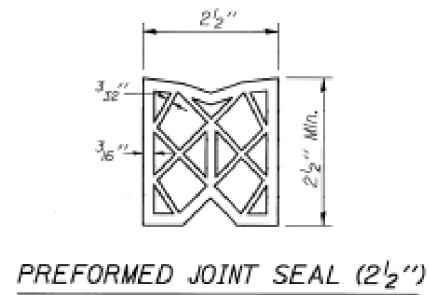
ROUTE NO.	SECTION	COUNTY	DATE	NO.	SHEET NO. 533 OF 528 SHEETS
F.A.I. R.A.	150-41 VBR	LA SALLE	97	36	
FED. AID DIST. NO. 7	ILLINOIS	FED. AID PROJECT			



EXPANSION JOINT DETAIL • WEST ABUTMENTS

(2 Locations - W. Abut., W.B.
& W. Abut., E.B.)

** Furnish in segments of 20 ft. maximum
length. Maximum space between installed
segments shall be 3/16". Seal space with
Silicone Sealant suitable for Structural
Steel.



EXPANSION JOINT DETAIL • EAST ABUTMENTS

(2 Locations - E. Abut., W.B.
& E. Abut., E.B.)

** Furnish in segments of 20 ft. maximum
length. Maximum space between installed
segments shall be 3/16". Seal space with
Silicone Sealant suitable for Structural
Steel.

Note: After fabrication all surfaces of the steel plates shall be
given one shop coat of paint specified for New Structural
Steel. No field painting required.

DESIGNED	
CHECKED	
DRAWN	
CHECKED	

PREFORMED JOINT SEAL
F.A.I. RTE. 80 SEC. (50-4)VBR
LA SALLE COUNTY
STA. 590+86.53
S.N. 050-0012 (WESTBOUND)
050-0011 (EASTBOUND)

BOWMAN, BARRETT
& ASSOCIATES INC.
CONSULTING ENGINEERS
233 N. MICHIGAN AVENUE
CHICAGO, ILLINOIS 60601



SCALE: NOT TO SCALE DRAWN BY: CSL & CED
DATE: 10-25-93 CHECKED BY: RDC & SF

STATE OF ILLINOIS
DEPARTMENT OF TRANSPORTATION

EXISTING STRUCTURE PLANS
FOR STRUCTURE NO. 050-0011 (EB) & STRUCTURE NO. 050-0012 (WB)
"FOR INFORMATION ONLY"

F.A.I. RTE.	SECTION	COUNTY	TOTAL SHEETS	SHEET NO.
80	(50-4VB)BP	LASALLE	15	12
CONTRACT NO. 66L23				

SCALE: SHEET 4 OF 7 SHEETS STA. TO STA.

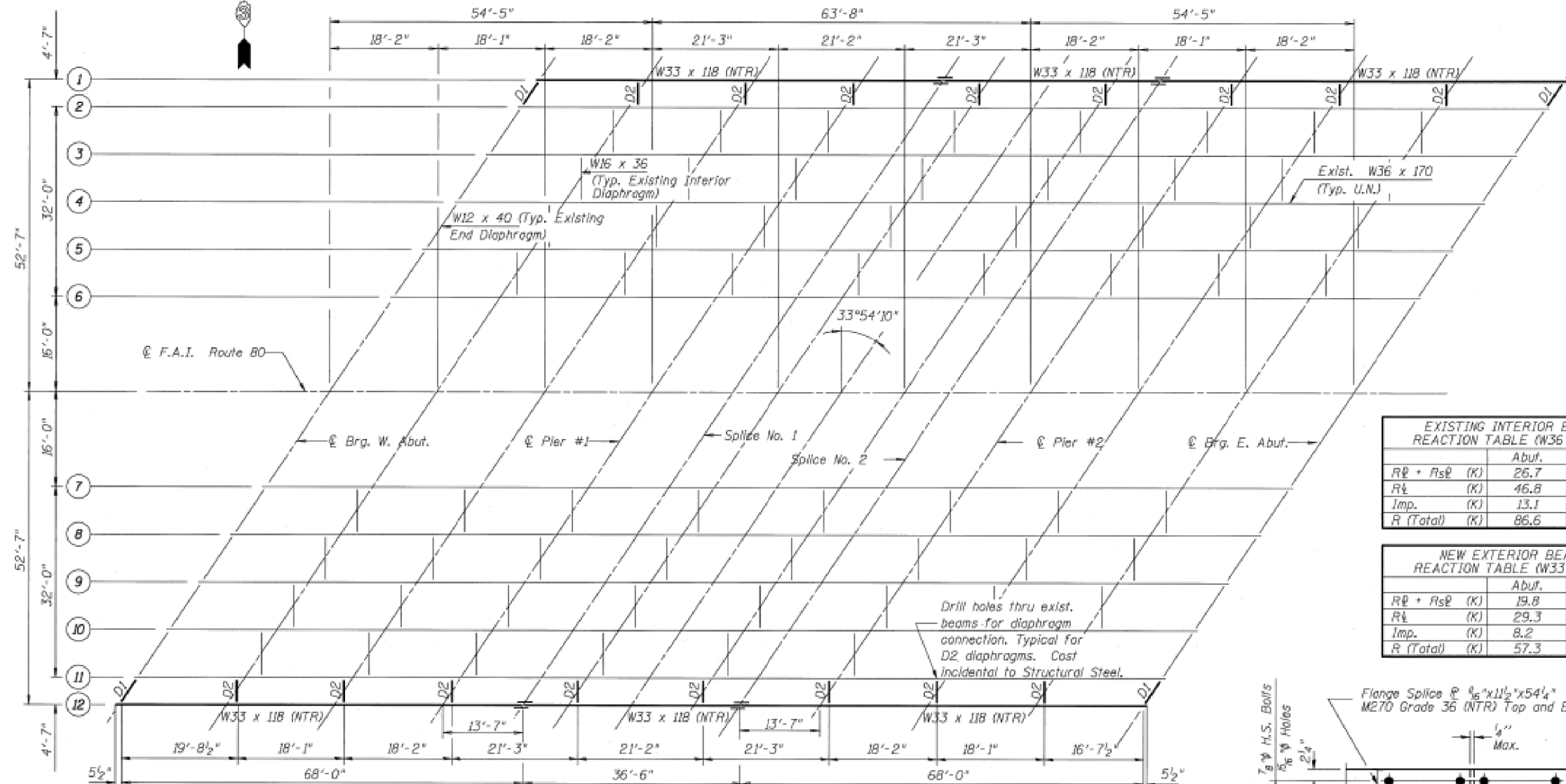
ILLINOIS FED. AID PROJECT

USER NAME = woodshankr	DESIGNED -	REVISED -
PLOT SCALE = 100,0000' / in.	DRAWN -	REVISED -
PLOT DATE = 12/1/2020	CHECKED -	REVISED -
	DATE -	REVISED -

STATE OF ILLINOIS
DEPARTMENT OF TRANSPORTATION

PROJECT NO.	SECTION	COUNTY	DATE	SHEET	SHEET NO. 512 OF 528 SHEETS
050-011	50-4) VBR	LA SALLE	9/1	37	

I_s and S_s are the moment of inertia and section modulus of the steel section used in computing f_s (Total & Overload).
 $I_c(n)$ and $S_c(n)$ are the moment of inertia and section modulus of the composite section used in computing stresses due to Live Load.
 $I_c(3n)$ and $S_c(3n)$ are the moment of inertia and section modulus of the composite section used in computing stresses due to superimposed dead loads (See AASHTO 10.38).
 V_R is the maximum live Load + Impact shear range in span.
 Z is the plastic section modulus used to determine the Fully Plastic Moments in the non-composite areas.
 $M\bar{\phi}$ - Moment due to dead loads on non-composite section.
 $M_s\bar{\phi}$ - Moment due to dead loads on composite section.
 $M\bar{\phi}$ - Moment due to live load on non-composite or composite section.
 $M(Imp)$ - Moment due to live load impact on non-composite or composite section
 $M\phi$ (Applied Moment) = $1.3(M\bar{\phi} + M_s\bar{\phi} + 5_3(M\bar{\phi} + I))$.
 The Plastic Moment capacity (M_u) is computed according to AASHTO 10.48.1 & 10.50.1.1.
 f_s (Overload) is the sum of the stresses due to $M\bar{\phi} + M_s\bar{\phi} + 5_3(M\bar{\phi} + I)$.



EXISTING INTERIOR BEAM REACTION TABLE (W36 x 170)

	Abut.	Pier
$R\bar{\phi} + R_s\bar{\phi}$ (K)	26.7	83.0
$R\bar{\phi}$ (K)	46.8	52.4
Imp. (K)	13.1	14.3
R (Total) (K)	86.6	149.7

NEW EXTERIOR BEAM REACTION TABLE (W33 x 118)

	Abut.	Pier
$R\bar{\phi} + R_s\bar{\phi}$ (K)	19.8	61.5
$R\bar{\phi}$ (K)	29.3	32.7
Imp. (K)	8.2	8.9
R (Total) (K)	57.3	103.1

EXISTING INTERIOR BEAM MOMENT TABLE (W36 x 170)

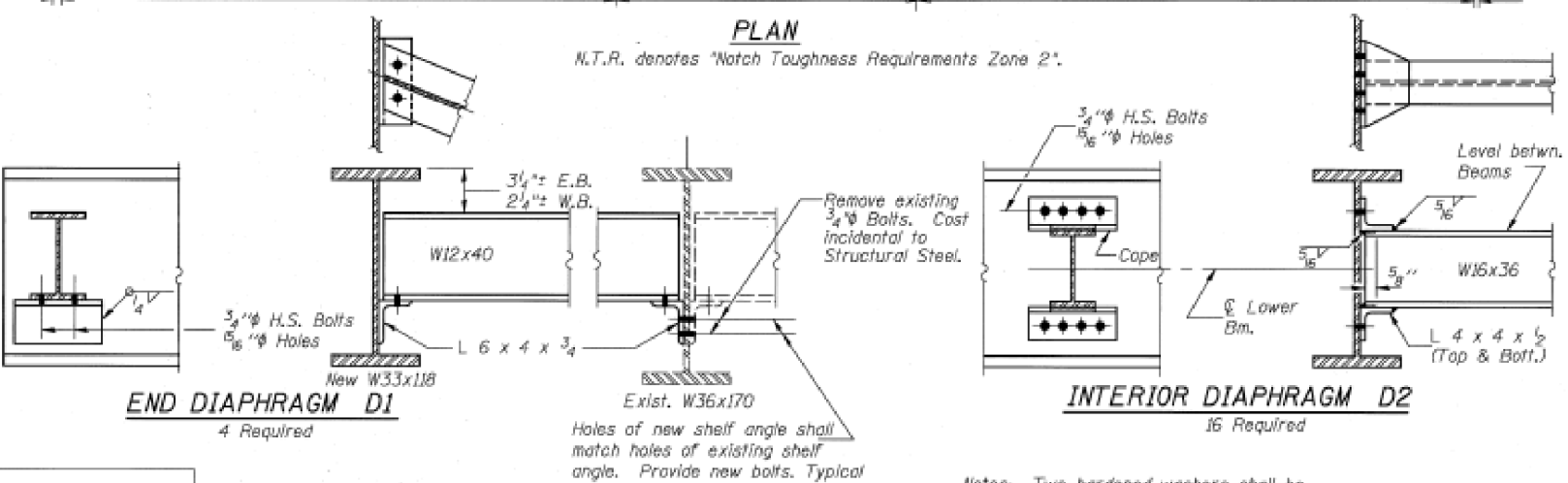
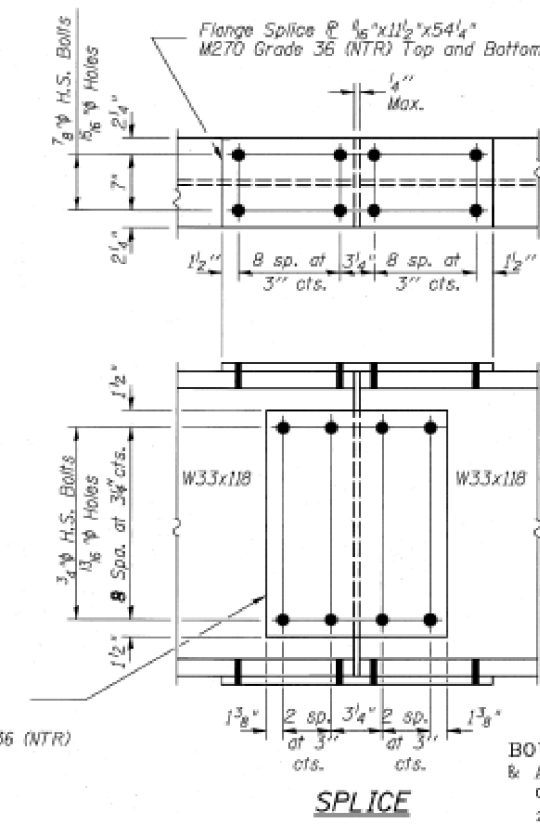
	0.4 Sp. 1 & 0.6 Sp. 3	Piers 1 & 2	0.5 Sp. 2
I_s (in ⁴)	10,500	10,500	10,500
I_c (n) (in ⁴)	23,830	-	23,830
I_c (3n) (in ⁴)	17,582	-	17,582
S_s (in ³)	580	580	580
S_c (n) (in ³)	788	-	788
S_c (3n) (in ³)	715	-	715
Z (in ³)	-	668	-
$\bar{\phi}$ (K/ft.)	.967	1.27	.967
$M\bar{\phi}$ (K)	208	431	152
$s\bar{\phi}$ (K/ft.)	.304	-	.304
$M_s\bar{\phi}$ (K)	71	-	61
$M\bar{\phi}$ (K)	437	251	442
M (Imp) (K)	122	68	117
$5_3(M\bar{\phi} + I)$ (K)	932	532	932
$M\phi$ (K)	1,574	1,252	1,489
M_u (K)	2,282	1,837	2,282
$f_s\bar{\phi}$ non-comp (k.s.i.)	4.3	8.9	3.1
$f_s\bar{\phi}$ comp (k.s.i.)	1.2	-	1.0
$f_s 5_3(\bar{\phi} + I)$ (k.s.i.)	14.2	11.0	14.2
f_s (Overload) (k.s.i.)	19.7	19.9	18.3
V_R (K)	64.7	-	67.6

NEW EXTERIOR BEAM MOMENT TABLE (W33 x 118)

	0.4 Sp. 1 & 0.6 Sp. 3	Piers 1 & 2	0.5 Sp. 2
I_s (in ⁴)	5,900	5,900	5,900
I_c (n) (in ⁴)	13,896	-	13,896
I_c (3n) (in ⁴)	10,092	-	10,092
S_s (in ³)	359	359	359
S_c (n) (in ³)	503	-	503
S_c (3n) (in ³)	452	-	452
Z (in ³)	-	415	-
$\bar{\phi}$ (K/ft.)	.638	.942	.638
$M\bar{\phi}$ (K)	138	316	100
$s\bar{\phi}$ (K/ft.)	.304	-	.304
$M_s\bar{\phi}$ (K)	71	-	61
$M\bar{\phi}$ (K)	263	149	267
M (Imp) (K)	73	41	71
$5_3(M\bar{\phi} + I)$ (K)	560	317	563
$M\phi$ (K)	1,000	823	941
M_u (K)	2,035	1,245	2,035
$f_s\bar{\phi}$ non-comp (k.s.i.)	4.6	10.6	3.3
$f_s\bar{\phi}$ comp (k.s.i.)	1.9	-	1.6
$f_s 5_3(\bar{\phi} + I)$ (k.s.i.)	13.4	10.6	13.4
f_s (Overload) (k.s.i.)	19.9	21.2	18.3
V_R (K)	40.3	-	42.1

FRAMING PLAN & DETAILS
 F.A.I. RTE. 80 SEC. (50-4)VBR
 LA SALLE COUNTY
 STA. 590+86.53
 S.N. 050-0012 (WESTBOUND)
 050-0011 (EASTBOUND)
 SCALE: NOT TO SCALE
 DRAWN BY: EBP & CED
 DATE: 9/26/09

BOWMAN, BARRETT & ASSOCIATES INC.
 CONSULTING ENGINEERS
 233 N. MICHIGAN AVENUE
 CHICAGO, ILLINOIS 60601



Notes: Two hardened washers shall be required over all oversize holes for diaphragms.
 All contact surfaces of diaphragm joints shall be free of paint or lacquer.
 See sheet S14 for procedure to jack and remove exist. expansion bearings.

DESIGNED	
CHECKED	
DRAWN	
CHECKED	

USER NAME = woodshankr	DESIGNED -	REVISED -
	DRAWN -	REVISED -
PLOT SCALE = 100,0000' / in.	CHECKED -	REVISED -
PLOT DATE = 12/1/2020	DATE -	REVISED -

STATE OF ILLINOIS
DEPARTMENT OF TRANSPORTATION

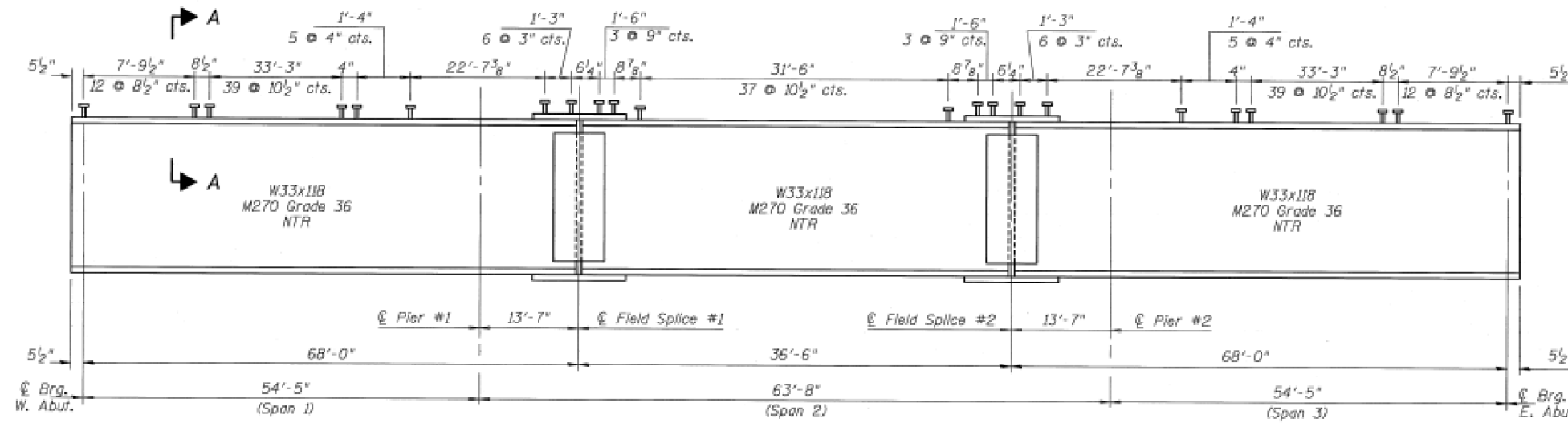
EXISTING STRUCTURE PLANS
 FOR STRUCTURE NO. 050-0011 (EB) & STRUCTURE NO. 050-0012 (WB)
 "FOR INFORMATION ONLY"

SCALE: SHEET 5 OF 7 SHEETS STA. TO STA.

F.A.I. RTE.	SECTION	COUNTY	TOTAL SHEETS	SHEET NO.
80	(50-4)VB/BP	LASALLE	15	13
				CONTRACT NO. 66L23
		ILLINOIS	FED. AID PROJECT	

STATE OF ILLINOIS
DEPARTMENT OF TRANSPORTATION

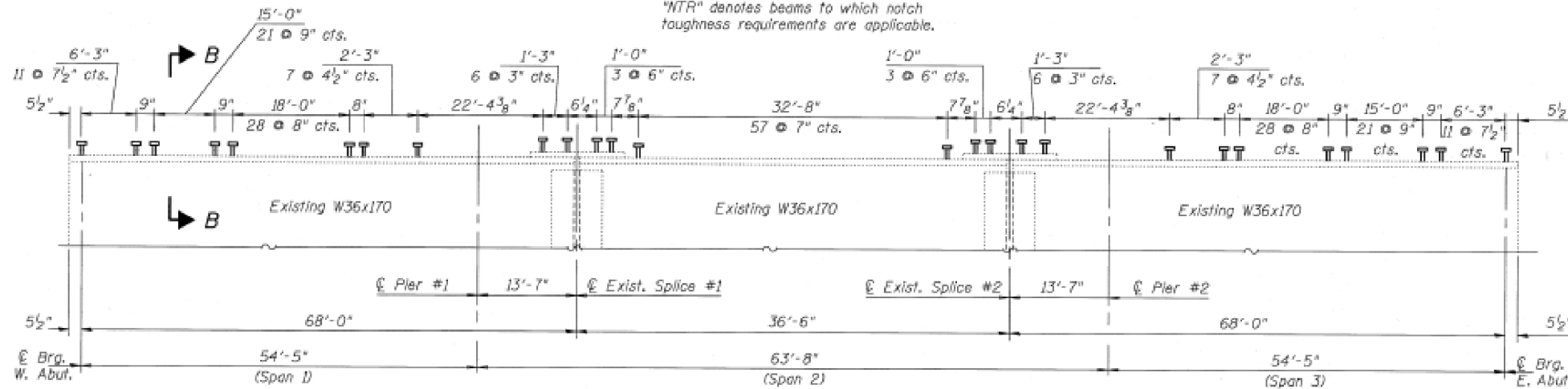
ROUTE NO.	SECTION	COUNTY	SHEET	TOTAL SHEETS
80	(50-4) VBR	LA SALLE	38	528
SHEET NO. 513 OF 528 SHEETS				



NEW BEAM ELEVATION - BEAMS 1 & 12

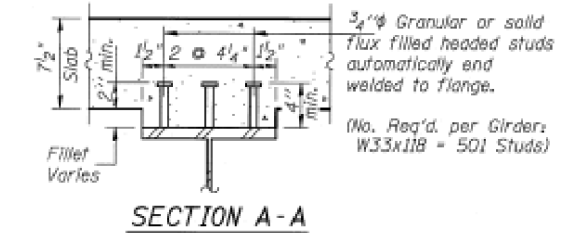
(W33x118 M270 GRADE 36)

*NTR denotes beams to which notch toughness requirements are applicable.

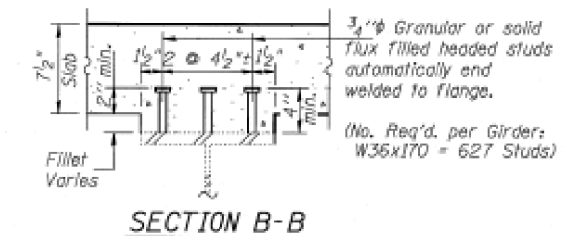


EXISTING BEAM ELEVATION - BEAMS 2-11

(W36x170 fy=33ksi)



SECTION A-A



SECTION B-B

NOTES:
See Sheet 512 for Splice Details.
Existing beam elevations are for information only.

TOP OF BEAM ELEVATIONS

LOCATION	* BM. #1	Existing BM. #2	Existing BM. #3	Existing BM. #4	Existing BM. #5	Existing BM. #6	Existing BM. #7	Existing BM. #8	Existing BM. #9	Existing BM. #10	Existing BM. #11	* BM. #12
© Brg. W. Abut.	547.34	547.39	547.61	547.73	547.74	547.65	547.91	548.12	548.25	548.25	548.17	548.19
© Pier #1	546.68	546.73	546.95	547.07	547.08	546.99	547.25	547.47	547.59	547.60	547.51	547.53
© Splice #1	546.51	546.57	546.79	546.91	546.92	546.83	547.09	547.30	547.43	547.44	547.35	547.37
© Splice #2	546.07	546.13	546.35	546.47	546.48	546.39	546.65	546.86	546.99	547.00	546.91	546.92
© Pier #2	545.91	545.97	546.18	546.30	546.31	546.23	546.49	546.70	546.82	546.83	546.74	546.76
© Brg. E. Abut.	545.25	545.31	545.53	545.65	545.66	545.57	545.83	546.04	546.17	546.18	546.09	546.10

* For fabrication use only.

DESIGNED	
CHECKED	
DRAWN	
CHECKED	

BEAM ELEVATION & DETAILS
F.A.I. RTE. 80 SEC. (50-4)VBR

LA SALLE COUNTY

STA. 590+86.53

S.N. 050-0012 (WESTBOUND)

050-0011 (EASTBOUND)

BOWMAN, BARRETT & ASSOCIATES INC.
CONSULTING ENGINEERS
233 N. MICHIGAN AVENUE
CHICAGO, ILLINOIS 60601



SCALE: NOT TO SCALE DRAWN BY: EBP & CSL
DATE: 10-25-93 CHECKED BY: RDC & SF

MODEL: Default
FILE: \\nas01\pub\baron\dot\illinois\dot\dot\Documents\IBDOT\Office\Drawings\3\Project\03366123\CADD\03366123-cover.dgn

USER NAME = woodshankr	DESIGNED -	REVISED -
PLOT SCALE = 100.0000' / in.	DRAWN -	REVISED -
PLOT DATE = 12/1/2020	CHECKED -	REVISED -
	DATE -	REVISED -

STATE OF ILLINOIS
DEPARTMENT OF TRANSPORTATION

EXISTING STRUCTURE PLANS
FOR STRUCTURE NO. 050-0011 (EB) & STRUCTURE NO. 050-0012 (WB)
"FOR INFORMATION ONLY"

SCALE: SHEET 6 OF 7 SHEETS STA. TO STA.

F.A.I. RTE.	SECTION	COUNTY	TOTAL SHEETS	SHEET NO.
80	(50-4) VBR	LASALLE	15	14
CONTRACT NO. 66L23				
ILLINOIS FED. AID PROJECT				

