

STATE OF ILLINOIS  
DEPARTMENT OF TRANSPORTATION

F.A.I. RTE.	SECTION	COUNTY	TOTAL SHEETS	SHEET NO.
57		CHAMPAIGN	13	1
		ILLINOIS	CONTRACT NO. 70F25	

\* D5 BRIDGE PAINTING 2021-2

FOR INDEX OF SHEETS, SEE SHEET NO. 2  
FOR SUMMARY OF QUANTITIES, SEE SHEET NO. 3 & 4

**PROPOSED  
HIGHWAY PLANS**

F.A.I. ROUTE 57 (I-57)  
SECTION D5 BRIDGE PAINTING 2021-2  
PROJECT NHPP-AX7K(823)  
BRIDGE PAINTING  
CHAMPAIGN COUNTY

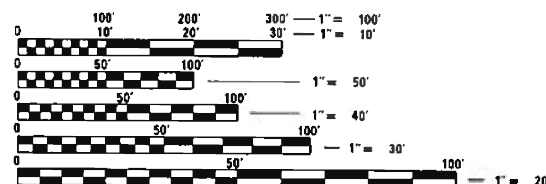
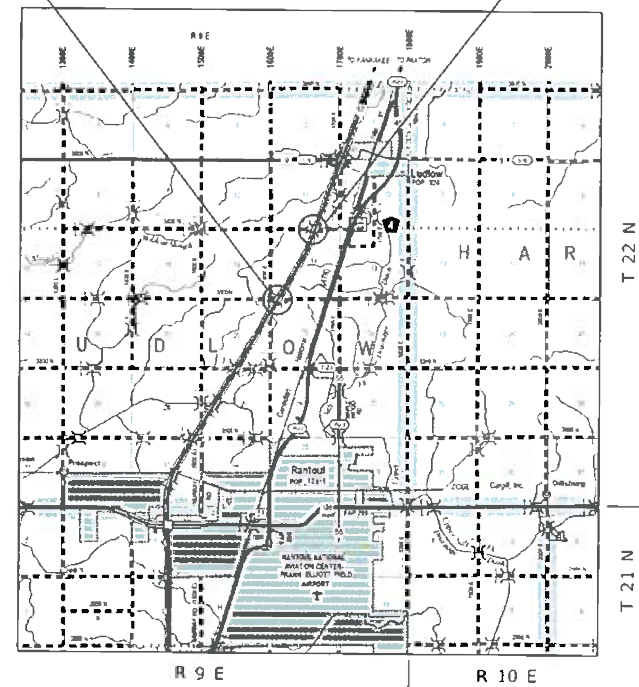
C-95-039-21

CURRENT TRAFFIC DATA	
ADT 2020	
LOC. #1	LOC. #2
19,500	19,500

LOC. #1: S.N. 010-0161 - TR 35 OVER I-57 - 2 MILE SOUTH OF LUDLOW  
LOC. #2: S.N. 010-0189 - TR 27 OVER I-57 - 1 MILE SOUTH OF LUDLOW



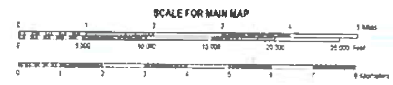
S.N. 010-0161 LOCATION #1  
S.N. 010-0189 LOCATION #2



FULL SIZE PLANS HAVE BEEN PREPARED USING STANDARD ENGINEERING SCALES. REDUCED SIZED PLANS WILL NOT CONFORM TO STANDARD SCALES. IN MAKING MEASUREMENTS ON REDUCED PLANS, THE ABOVE SCALES MAY BE USED.

J.U.L.I.E.  
JOINT UTILITY LOCATION INFORMATION FOR EXCAVATORS  
1-800-892-0123  
OR 811  
**LUDLOW TOWNSHIP**

PROJECT ENGINEER: JASON STULTS  
SQUAD LEADER: JASON LEE  
PHONE: (217)465-4181  
CONTRACT NO. 70F25



STATE OF ILLINOIS  
DEPARTMENT OF TRANSPORTATION

SUBMITTED 12/18/2020  
*Kenil Adhikari*  
REGIONAL ENGINEER

January 29, 2021  
*Jason A. Lee*  
ENGINEER OF DESIGN AND ENVIRONMENT

January 29, 2021  
*James J. Lee*  
DIRECTOR OF HIGHWAYS PROJECT IMPLEMENTATION

**PRINTED BY THE AUTHORITY  
OF THE STATE OF ILLINOIS**

## INDEX OF SHEETS

SHEET NO.	DESCRIPTION
1	COVER SHEET
2	INDEX OF SHEETS, HIGHWAY STANDARDS, & GENERAL NOTES
2	SCHEDULE OF QUANTITIES
3 - 4	SUMMARY OF QUANTITIES
5	DESCRIPTIONS OF WORK FOR LOCATIONS 1 & 2
6	TYPICAL CROSS-SECTION
7 - 9	LOCATION #1 STRUCTURE DETAILS
10 - 12	LOCATION #2 STRUCTURE DETAILS
13	TEMPORARY RUMBLE STRIPS (SPECIAL)

## HIGHWAY STANDARDS

STANDARD NO.	DESCRIPTION
000001-08	STANDARD SYMBOLS, ABBREVIATIONS AND PATTERNS
701001-02	OFF-ROAD OPERATIONS, 2L, 2W, MORE THAN 15' (4.5m) AWAY
701006-05	OFF-ROAD OPERATIONS, 2L, 2W, 15' (4.5 m) TO 24" (600 mm) FROM PAVEMENT EDGE
701101-05	OFF-ROAD OPERATIONS, MULTILANE, 15' (4.5 m) TO 24" (600 mm) FROM PAVEMENT EDGE
701106-02	OFF-ROAD OPERATIONS, MULTILANE, MORE THAN 15' (4.5 m) AWAY
701400-10	APPROACH TO LANE CLOSURE, FREEWAY/EXPRESSWAY
701402-12	LANE CLOSURE, FREEWAY/EXPRESSWAY, WITH BARRIER
701901-08	TRAFFIC CONTROL DEVICES
704001-08	TEMPORARY CONCRETE BARRIER
782006-01	GUARDRAIL AND BARRIER WALL REFLECTOR MOUNTING DETAILS

## GENERAL NOTES

G.N.-100A  
ELECTRONIC FILES AND/OR ELECTRONIC SURVEY INFORMATION INCLUDING CADD FILES WILL NOT BE AVAILABLE TO THE CONTRACTOR.

G.N.-501A  
THE EXISTING STRUCTURAL STEEL COATING CONTAINS LEAD. THE CONTRACTOR SHALL FOLLOW THE GUIDE BRIDGE SPECIAL PROVISIONS FOR "CONTAINMENT AND DISPOSAL OF LEAD PAINT CLEANING RESIDUES" TO DEAL WITH THE PRESENCE OF LEAD ON THIS PROJECT.

G.N.-506 (SPL.)  
ALL FINAL SURFACES OF THE BEAMS SHALL BE PAINTED GRAY (MUNSELL COLOR STANDARD - 5B 7/1) EXCEPT THE EXTERIOR SURFACES OF THE EXTERIOR BEAMS WHICH SHALL BE PAINTED WITH EITHER INTERSTATE GREEN (MUNSELL COLOR STANDARD 7.5G 4/8) OR REDDISH BROWN (MUNSELL COLOR STANDARD 2.5YR 3/4) AS SPECIFIED UNDER THE DESCRIPTION FOR EACH STRUCTURE.

ONLY STRUCTURAL STEEL AND OTHER DESIGNATED SURFACES SHALL BE PAINTED. ALL OTHER SURFACES SHALL BE PROTECTED FROM CONTRACTORS BLASTING AND PAINTING OPERATIONS. ANY AREAS DAMAGED BY BLASTING OR OVERSPRAY WILL BE REMOVED OR REPAIRED AT THE CONTRACTOR'S EXPENSE AND NO ADDITIONAL COMPENSATION WILL BE ALLOWED.

CARE SHALL BE TAKEN NOT TO DAMAGE RUBBER BEARING OR JOINT COMPONENTS DURING BLASTING AND CLEANING OPERATIONS. ANY DAMAGE TO THESE COMPONENTS SHALL BE REPAIRED AT CONTRACTORS EXPENSE.

THE SSPC-QP1 AND QP2 PAINTING CONTRACTOR CERTIFICATIONS WILL BE REQUIRED FOR THIS CONTRACT.

ALL TRASH AND PAINTING DEBRIS, EXCLUDING WASTE BARRELS OR ROLL-OFF DUMPSTERS, SHALL BE REMOVED BEFORE BEGINNING WORK AT ANOTHER LOCATION.

2 YEAR PAINT WARRANTY REQUIRED FOR ALL STRUCTURES

## SCHEDULE OF QUANTITIES

	70400100			70400200		
	Temporary Taper	Concrete Tangent	Barrier Total	Relocate Taper	Temp Concrete Tangent	Barrier Total
#1 NBDL	150'	125'	275'	-	-	-
#1 NBPL	-	-	-	150'	0'	150'
#1 SBDL	150'	125'	275'	-	-	-
#1 SBPL	-	-	-	150'	0'	150'
#2 NBDL	150'	125'	275'	-	-	-
#2 NBPL	-	-	-	150'	0'	150'
#2 SBDL	150'	125'	275'	-	-	-
#2 SBPL	-	-	-	150'	0'	150'
			1100'	600'		

### 70107025 - Changeable Message Sign

Location #1 - 010-0161	
7.0	CAL DA - Advance Notification for I-57 NB
7.0	CAL DA - Advance Notification for I-57 SB
14.0 CAL DA	
Location #2 - 010-0189	
7.0	CAL DA - Advance Notification for I-57 NB
7.0	CAL DA - Advance Notification for I-57 SB
14.0 CAL DA	
<b>TOTAL</b>	
<b>28 CAL DA</b>	

## COMMITMENTS

NO COMMITMENTS

**STATE OF ILLINOIS  
DEPARTMENT OF TRANSPORTATION**

**INDEX OF SHEETS, HIGHWAY STANDARDS,  
GENERAL NOTES & SCHEDULE OF QUANTITIES**

SCALE: NONE    SHEET 1 OF 1 SHEETS    STA. TO STA.

F.A.I. RTE.	SECTION	COUNTY	TOTAL SHEETS	SHEET NO.
57	*	CHAMPAIGN	13	2
* D5 BRIDGE PAINTING 2021-02		CONTRACT NO. 70F25		
ILLINOIS		FED. AID PROJECT		



# SUMMARY OF QUANTITIES

LOC. #1	LOC. #2
FAI 57	FAI 57
S.N. 010-0161	S.N. 010-0189
CHAMPAIGN CO.	CHAMPAIGN CO.
RURAL	RURAL
90% FEDERAL	90% FEDERAL
10% STATE	10% STATE
CONSTRUCTION TYPE CODE:	0047

CODE NO.	ITEM	UNIT	TOTAL QUANTITY	QUANTITY	QUANTITY	
67100100	MOBILIZATION	L SUM	1.0	0.5	0.5	
70100207	TRAFFIC CONTROL AND PROTECTION, STANDARD 701402	EACH	8.0	4.0	4.0	
70107025	CHANGEABLE MESSAGE SIGN	CAL DA	28.0	14.0	14.0	
70400100	TEMPORARY CONCRETE BARRIER	FOOT	1100.0	550.0	550.0	
70400200	RELOCATE TEMPORARY CONCRETE BARRIER	FOOT	600.0	300.0	300.0	
70600250	IMPACT ATTENUATORS, TEMPORARY (NON-REDIRECTIVE), TEST LEVEL 3	EACH	4.0	2.0	2.0	
70600350	IMPACT ATTENUATORS, RELOCATE (NON-REDIRECTIVE), TEST LEVEL 3	EACH	4.0	2.0	2.0	
* 78200011	BARRIER WALL REFLECTORS, TYPE C	EACH	24.0	12.0	12.0	
X2700001	TEMPORARY RUMBLE STRIPS (SPECIAL)	EACH	16.0	8.0	8.0	
X5067501	BRIDGE CLEANING AND PAINTING WARRANTY NUMBER 1	L SUM	1.0	1.0		
X5067502	BRIDGE CLEANING AND PAINTING WARRANTY NUMBER 2	L SUM	1.0		1.0	
Z0007101	CONTAINMENT AND DISPOSAL OF LEAD PAINT CLEANING RESIDUES NO. 1	L SUM	1.0	1.0		
Z0007102	CONTAINMENT AND DISPOSAL OF LEAD PAINT CLEANING RESIDUES NO. 2	L SUM	1.0		1.0	
Z0010501	CLEANING AND PAINTING STEEL BRIDGE NO. 1	L SUM	1.0	1.0		
* DENOTES SPECIALTY ITEM						

MODEL: I:\MODEL\MH\MS  
 FILE: Mh.ms; Path: \\hmc\com\ada\illinois.gov\RWIDOT\Documents\DOT\_Offices\District\_5\Projects\0570F25\CADD\DATA\CAD\Recess\0570F25-rh-500.dgn

USER NAME = PiersonTJ	DESIGNED -	REVISED -
	DRAWN -	REVISED -
PLOT SCALE = 40.0000' / in.	CHECKED -	REVISED -
PLOT DATE = 12/8/2020	DATE -	REVISED -

**STATE OF ILLINOIS  
DEPARTMENT OF TRANSPORTATION**

**SUMMARY OF QUANTITIES**

SCALE: NONE    SHEET 1 OF 2 SHEETS    STA.    TO STA.

F.A.I. RTE.	SECTION	COUNTY	TOTAL SHEETS	SHEET NO.
57	*	CHAMPAIGN	13	3
* D5 BRIDGE PAINTING 2021-02			CONTRACT NO. 70F25	
ILLINOIS FED. AID PROJECT				

## SUMMARY OF QUANTITIES

LOC. #1	LOC. #2
FAI 57	FAI 57
S.N. 010-0161	S.N. 010-0189
CHAMPAIGN CO.	CHAMPAIGN CO.
RURAL	RURAL
90% FEDERAL	90% FEDERAL
10% STATE	10% STATE
CONSTRUCTION TYPE CODE: 0047	0047

	CODE NO.	ITEM	UNIT	TOTAL QUANTITY	QUANTITY	QUANTITY
	Z0010502	CLEANING AND PAINTING STEEL BRIDGE NO. 2	L SUM	1.0		1.0
		* DENOTES SPECIALTY ITEM				

 MODEL: \\MODEL\MAR\T...  
 FILE: \\MAR\T...

USER NAME = PiersonTJ	DESIGNED -	REVISED -
	DRAWN -	REVISED -
PLOT SCALE = 40.0000 ' / in.	CHECKED -	REVISED -
PLOT DATE = 12/8/2020	DATE -	REVISED -

**STATE OF ILLINOIS**  
**DEPARTMENT OF TRANSPORTATION**

<b>SUMMARY OF QUANTITIES</b>	
SCALE: NONE	SHEET 2 OF 2 SHEETS
STA.	TO STA.

F.A.I. RTE.	SECTION	COUNTY	TOTAL SHEETS	SHEET NO.
57	*	CHAMPAIGN	13	4
* D5 BRIDGE PAINTING 2021-02		CONTRACT NO. 70F25		
ILLINOIS FED. AID PROJECT				

### LOCATION #1

DESCRIPTION: TR 35 OVER I-57 - 2 MI S. OF LUDLOW - M.P. 253.8  
 COUNTY: CHAMPAIGN  
 ROUTE: F.A.I. 57  
 MARKED ROUTE: I-57  
 SECTION: 10-37HB-2  
 STRUCTURE NO.: 010-0161  
 TYPE OF STRUCTURE: CONTINUOUS STEEL

CLEANING AND PAINTING OF THE EXISTING STRUCTURAL STEEL SHALL BE AS SPECIFIED IN THE SPECIAL PROVISIONS FOR "CLEANING AND PAINTING EXISTING STEEL STRUCTURES." ALL BEAMS, BEARINGS AND OTHER STRUCTURAL STEEL SHALL BE CLEANED PER NEAR WHITE BLASTING SSPC-SP10.

THE DESIGNATED AREAS CLEANED PER NEAR WHITE BLAST CLEANING SSPC-SP10 SHALL BE PAINTED ACCORDING TO THE REQUIREMENTS OF PAINT SYSTEM 1 OZ/E/U. THE COLOR OF THE FINAL FINISH COAT FOR ALL INTERIOR STEEL SURFACES SHALL BE GRAY, MUNSELL NO. 5B 7/1. THE COLOR OF THE FINAL FINISH COAT FOR ALL EXTERIOR AND BOTTOM FLANGE OF THE FASCIA BEAMS SHALL BE INTERSTATE GREEN (MUNSELL COLOR STANDARD 7.5G 4/8).

A MINIMUM OF ONE (1) HIGH VOLUME AIR MONITORS WILL BE REQUIRED TO MONITOR AIR QUALITY DURING DUST PRODUCING OPERATIONS AT THIS SITE. SEE SPECIAL PROVISIONS FOR "CONTAINMENT AND DISPOSAL OF LEAD PAINT CLEANING RESIDUES".

THE EXISTING STRUCTURAL STEEL COATING CONTAINS LEAD. THE CONTRACTOR SHALL FOLLOW THE GUIDE BRIDGE SPECIAL PROVISIONS FOR "CONTAINMENT AND DISPOSAL OF LEAD PAINT CLEANING RESIDUES" TO DEAL WITH THE PRESENCE OF LEAD ON THIS PROJECT.

2 YEAR PAINT WARRANTY REQUIRED FOR THIS STRUCTURE.

### LOCATION #2

DESCRIPTION: TR 27 OVER I-57 - 1 MI S. OF LUDLOW - M.P. 254.9  
 COUNTY: CHAMPAIGN  
 ROUTE: F.A.I. 57  
 MARKED ROUTE: I-57  
 SECTION: 10-37HB-3  
 STRUCTURE NO.: 010-0189  
 TYPE OF STRUCTURE: CONTINUOUS STEEL

CLEANING AND PAINTING OF THE EXISTING STRUCTURAL STEEL SHALL BE AS SPECIFIED IN THE SPECIAL PROVISIONS FOR "CLEANING AND PAINTING EXISTING STEEL STRUCTURES." ALL BEAMS, BEARINGS AND OTHER STRUCTURAL STEEL SHALL BE CLEANED PER NEAR WHITE BLASTING SSPC-SP10.

THE DESIGNATED AREAS CLEANED PER NEAR WHITE BLAST CLEANING SSPC-SP10 SHALL BE PAINTED ACCORDING TO THE REQUIREMENTS OF PAINT SYSTEM 1 OZ/E/U. THE COLOR OF THE FINAL FINISH COAT FOR ALL INTERIOR STEEL SURFACES SHALL BE GRAY, MUNSELL NO. 5B 7/1. THE COLOR OF THE FINAL FINISH COAT FOR ALL EXTERIOR AND BOTTOM FLANGE OF THE FASCIA BEAMS SHALL BE INTERSTATE GREEN (MUNSELL COLOR STANDARD 7.5G 4/8).

A MINIMUM OF ONE (1) HIGH VOLUME AIR MONITORS WILL BE REQUIRED TO MONITOR AIR QUALITY DURING DUST PRODUCING OPERATIONS AT THIS SITE. SEE SPECIAL PROVISIONS FOR "CONTAINMENT AND DISPOSAL OF LEAD PAINT CLEANING RESIDUES".

THE EXISTING STRUCTURAL STEEL COATING CONTAINS LEAD. THE CONTRACTOR SHALL FOLLOW THE GUIDE BRIDGE SPECIAL PROVISIONS FOR "CONTAINMENT AND DISPOSAL OF LEAD PAINT CLEANING RESIDUES" TO DEAL WITH THE PRESENCE OF LEAD ON THIS PROJECT.

2 YEAR PAINT WARRANTY REQUIRED FOR THIS STRUCTURE.

MODEL: I:\MODEL\NAMES  
FILE: Names\_PaintSystemData\Illinois.gov\PIW\DOT\Documents\DOT\_Offices\District 5\Projects\0570F25\CADD\DATA\CAD\References\0570F25-ht-Loc Notes.dgn

USER NAME = PiersonTJ	DESIGNED -	REVISED -
	DRAWN -	REVISED -
PLOT SCALE = 40.0000 ' / in.	CHECKED -	REVISED -
PLOT DATE = 12/8/2020	DATE -	REVISED -

**STATE OF ILLINOIS  
DEPARTMENT OF TRANSPORTATION**

**DESCRIPTIONS OF WORK  
FOR LOCATIONS 1 & 2**

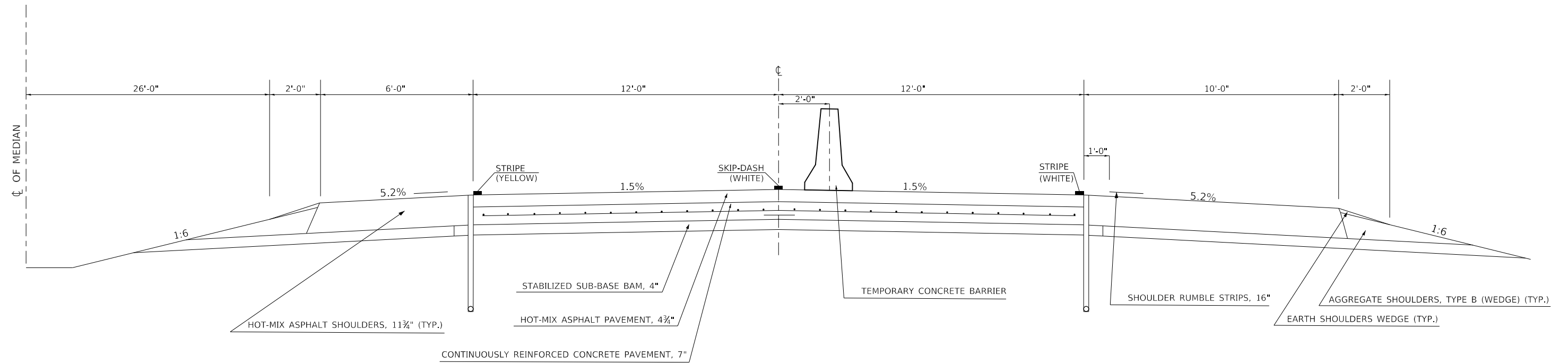
SCALE: NONE SHEET 1 OF 1 SHEETS STA. TO STA.

F.A.I. RTE.	SECTION	COUNTY	TOTAL SHEETS	SHEET NO.
57	*	CHAMPAIGN	13	5
* D5 BRIDGE PAINTING 2021-02			CONTRACT NO. 70F25	
		ILLINOIS	FED. AID PROJECT	

# EXISTING TYPICAL CROSS SECTION

INTERSTATE 57

STATION	TO	STATION
NB 1336+77.99		1502+40.24(BK)
NB 1502+35.17 (AH)		1649+71.37
SB 1336+77.99		1502+40.24(BK)
SB 1502+35.17 (AH)		1649+71.37



MODEL: I:\MODEL\I-57\I-57\_Typical\_Cross\_Section.dgn  
 FILE: I:\MODEL\I-57\I-57\_Typical\_Cross\_Section.dgn  
 PROJECT: I:\PROJECTS\I-57\I-57\_Typical\_Cross\_Section.dgn  
 USER: PIERSONTJ  
 DATE: 12/8/2020

USER NAME = PIERSONTJ	DESIGNED -	REVISED -
	DRAWN -	REVISED -
PLOT SCALE = 40.0000' / in.	CHECKED -	REVISED -
PLOT DATE = 12/8/2020	DATE -	REVISED -

**STATE OF ILLINOIS  
DEPARTMENT OF TRANSPORTATION**

**I-57 TYPICAL CROSS-SECTION**

SCALE: N.T.S. SHEET 1 OF 1 SHEETS STA. TO STA.

F.A.I. RTE.	SECTION	COUNTY	TOTAL SHEETS	SHEET NO.
57	*	CHAMPAIGN	13	6
CONTRACT NO. 70F25				
ILLINOIS FED. AID PROJECT				

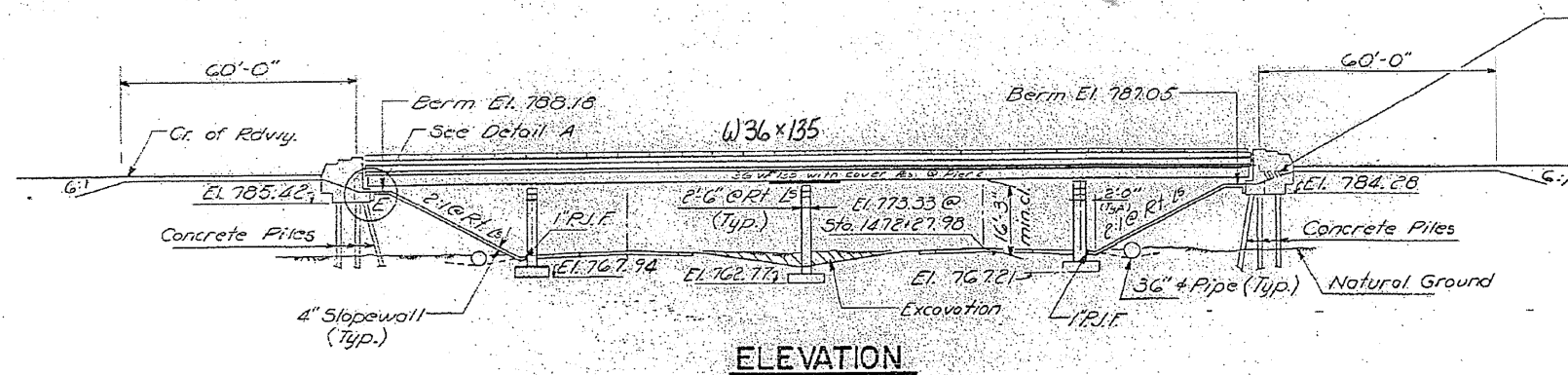
\* D5 BRIDGE PAINTING 2021-02

B.M. RR Spikes in 22" Walnut tree 6 Lt.  
Sta. 1472+61 El. 773.85

STATE OF ILLINOIS  
DEPARTMENT OF PUBLIC WORKS & BUILDINGS  
DIVISION OF HIGHWAYS

ROUTE NO.	SECTION	COUNTY	TOTAL SHEETS	SHEET NO.
F.A.I. RT. 57	10-37HB-2	CHAMPAIGN	45	11

PROJECT: I-IG-57-5(64)205

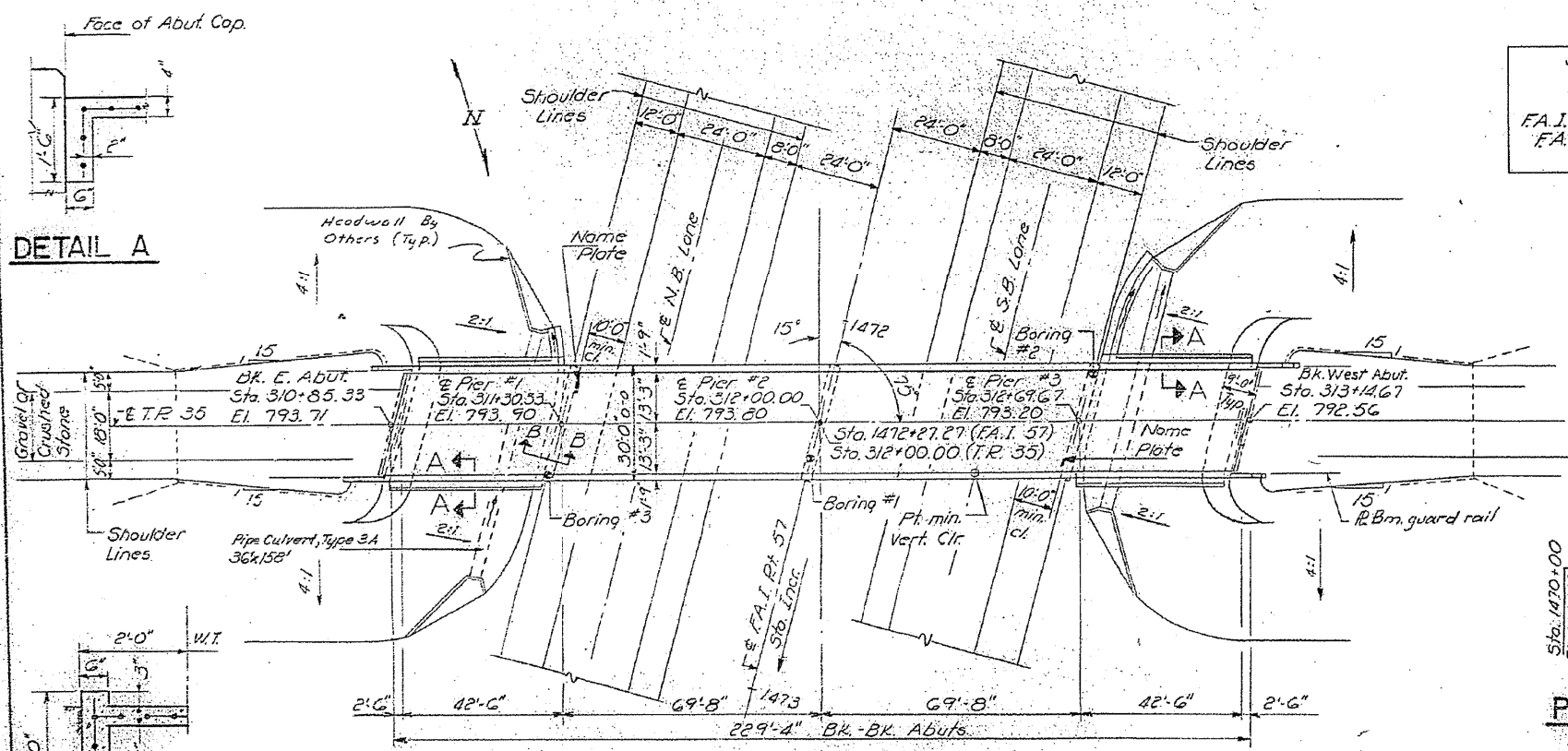


This portion of Embankment Backfill by Bridge Contractor after Abut. is in place (Typ.)

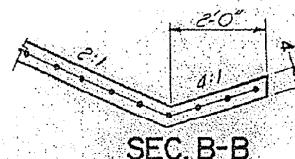
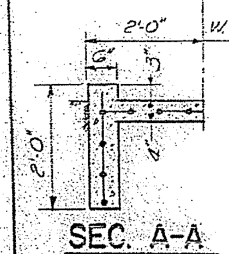
**GENERAL NOTES**

- Coarse aggregate to be used in parapet handrails and wingwalls must be absolutely free of chert, flint, limonite, lignite & soft sandstone.
- The concrete floor shall be finished in accordance with Article 51.19 of the Standard Specifications.
- Slope wall shall be reinforced with welded wire fabric 6"x6" mesh, weighing 50 #/100 sq. ft.
- All reinforcement bars shall be lapped 20 dia. unless otherwise shown.
- Permanent forms will not be permitted in forming the concrete floor.
- Anchor Bolts shall be set before fastening diaphragms over supports.
- The exposed surfaces of the Expansion guards shall be given two shop coats of red lead paint, the contact surfaces shall be given one coat of red lead paint. Anchor studs shall not be painted.
- Expansion guards are included in the quantity of Structural Steel. Est. Weight 760 lbs.
- Except as otherwise provided, all Structural Steel shall receive one shop coat of red lead paint and two field coats of paint. See Special provisions for field painting.
- All Structural Steel shall conform to A.S.T.M. Specification A-36.
- Excavation for portions of structures in the embankments shall not be classified.
- The Contractor shall drive one concrete test pile in permanent location of the East Abut. as directed by the Engineer, before ordering the remaining piles.
- Concrete piles at abuts. shall be driven in holes precored through the embankment in accordance with Article 60.9(c) of the Standard Specifications.
- Field welding of construction accessories to beams or girders will not be permitted on the bottom flanges and for a distance of 1/4 of the span each way from pier supports on top flanges. Field welding in other areas will be permitted only when approved by the Engineer.
- Rivets 3/4" dia., Open holes 1/2" unless otherwise shown.

STATION 1472+27.27  
BUILT 196 BY  
STATE OF ILLINOIS  
F.A.I. RT. 57 SEC. 10-37HB-2  
FA. PROJ. I-IG-57-5(64)  
LOADING HS-15  
**NAME PLATE**  
See Std. 2113-1

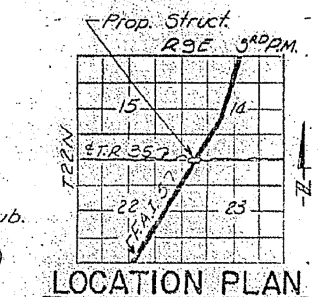


**DETAIL A**



**PLAN**

**PROFILE F.A.I. RT. 57 (PROPOSED)**



**LOCATION PLAN**

**DESIGN STRESSES**

$f_c = 1400$  psi Super & Sub.  
 $f_s = 20,000$  p.s.i. Reinf.  
 $f_s = 20,000$  p.s.i. Struct. (A-36)  
 $v_c = 75$  p.s.i. Flgs.  
 $n = 10$   
Allowable  $\Delta = \frac{1}{1000}$   
Max. Hg. Pressure = 2 T.S.F.  
LOADING HS-15-44

**PROFILE TWP. RD. 35**

**TOTAL BILL OF MATERIAL**

Item	Unit	Super	Sub	Total
Class "A" Exc. for Structures	Cu Yds		300	300
Class X Concrete	Cu Yds	198.7	215.7	414.4
Protective Coat	Sq. Yds	880		880
Structural Steel	Lbs.	130,660		130,660
Aluminum Handrail	Lin. Ft.	452		452
Reinforcement Bars	Lbs.	53,430	20,290	73,720
Concrete Piles	Lin. Ft.		663	663
Test Piles (Concrete)	Each		1	1
Name Plates	Each		2	2
Slope Wall 4"	Sq. Yds		367	367

\* Includes use on inside vertical face, top and exposed end of abutment wings.

**GENERAL PLAN & ELEVATION**  
**T.R. 35 OVER F.A.I. RT. 57**  
**PROJ. I-IG-57-5(64)205**  
**F.A.I. RT. 57 SEC. 10-37HB-2**  
**CHAMPAIGN COUNTY**  
**STA. 1472+27.27 F.A.I. RT. 57**  
**STA. 312+00.00 T.R. 35**

DESIGNED: *A. H. K...*  
CHECKED: *J. S. Chilton*  
DRAWN: *J. SCHNELLER*  
CHECKED: *J. S. C.*

APRIL 15 1966  
EXAMINED: *[Signature]*  
PASSED: *[Signature]*  
APPROVED: *[Signature]*

MODEL: ST00010001  
FILE: ST00010001.DWG  
PROJECT: I-IG-57-5(64)205  
OFFICE: CHAMPAIGN  
DATE: 12/8/2020

USER NAME = PiersonTJ	DESIGNED -	REVISED -
	DRAWN -	REVISED -
PLOT SCALE = 40.0000" / in.	CHECKED -	REVISED -
PLOT DATE = 12/8/2020	DATE -	REVISED -

STATE OF ILLINOIS  
DEPARTMENT OF TRANSPORTATION

AS-BUILT PLANS		F.A.I. RTE.	SECTION	COUNTY	TOTAL SHEETS	SHEET NO.
LOCATION #1 S.N. 010-0161		57		CHAMPAIGN	13	7
SCALE: NONE	SHEET 1 OF 3 SHEETS	STA.	TO STA.	* D5 BRIDGE PAINTING 2021-02 CONTRACT NO. 70F25		

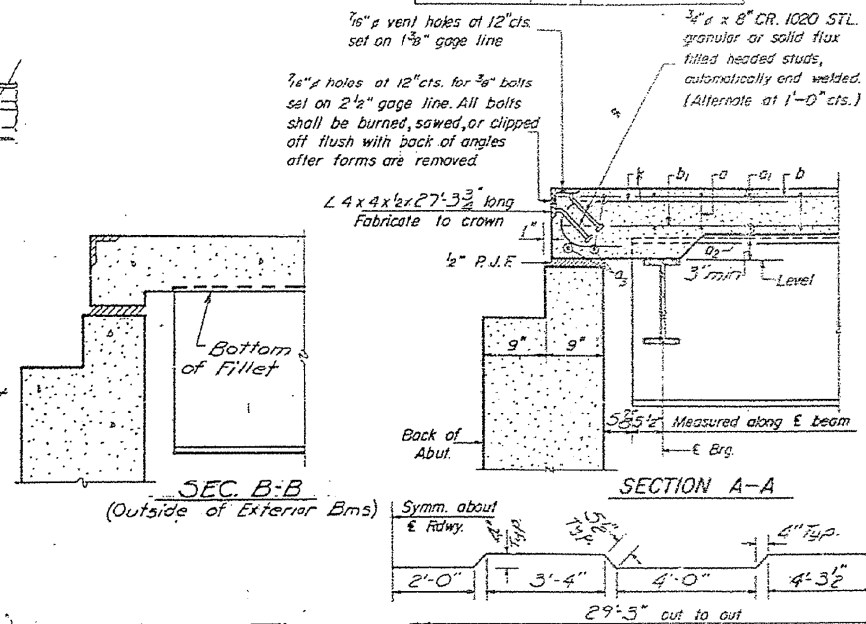
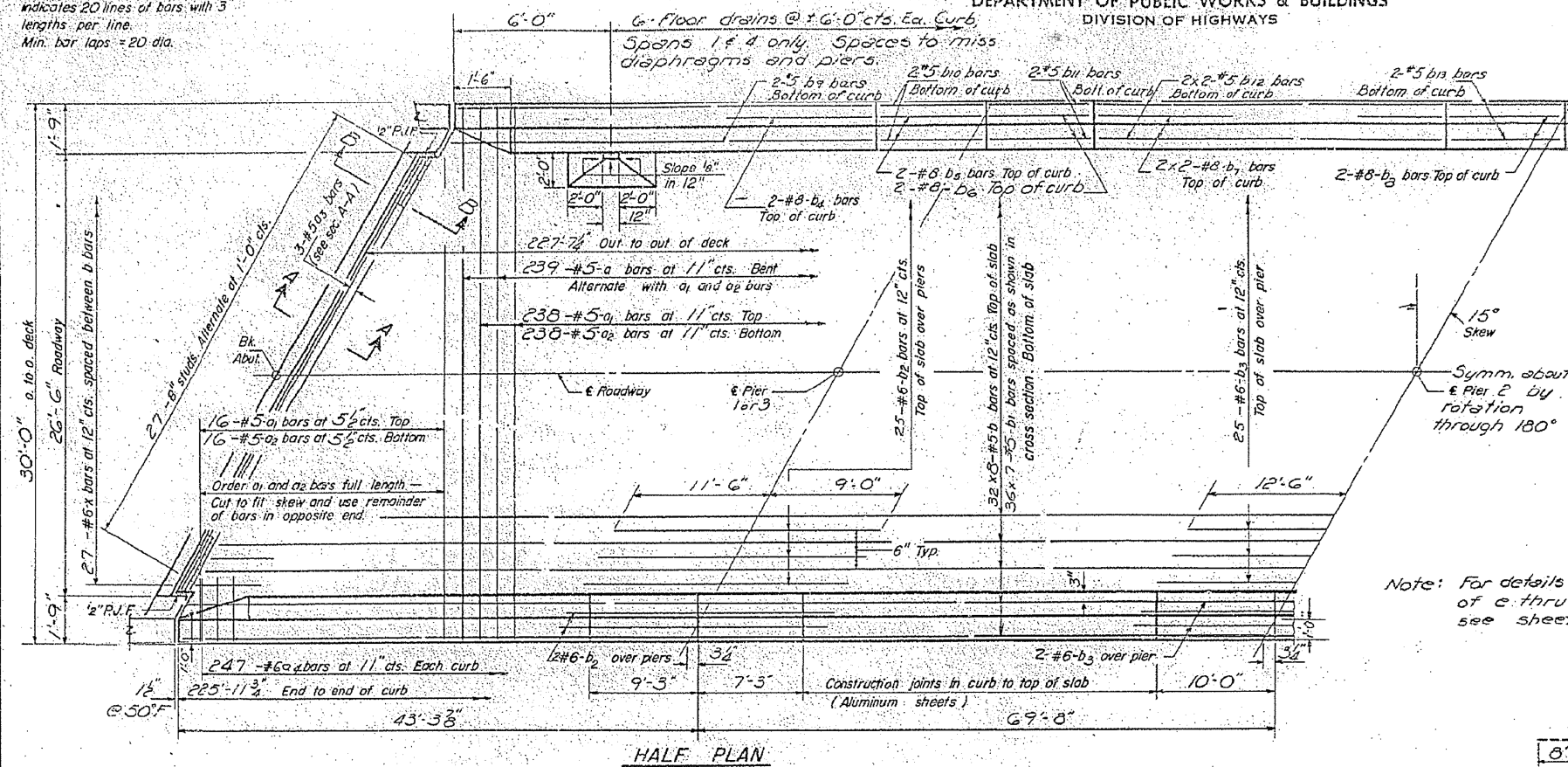
ILLINOIS	FED. AID PROJECT
----------	------------------



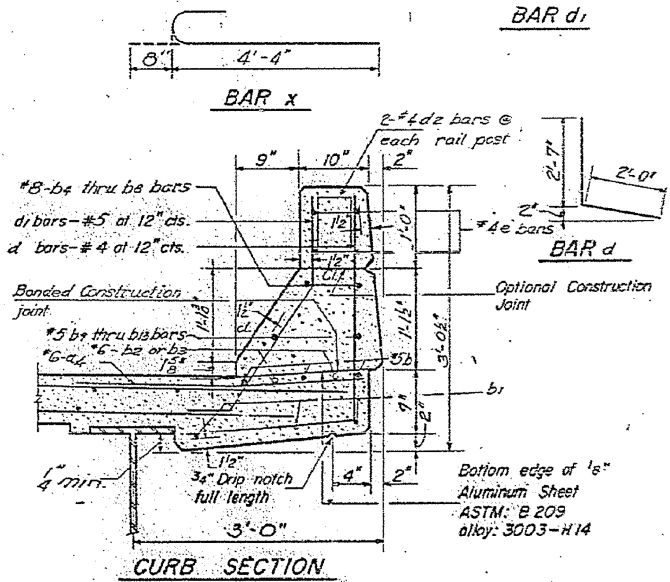
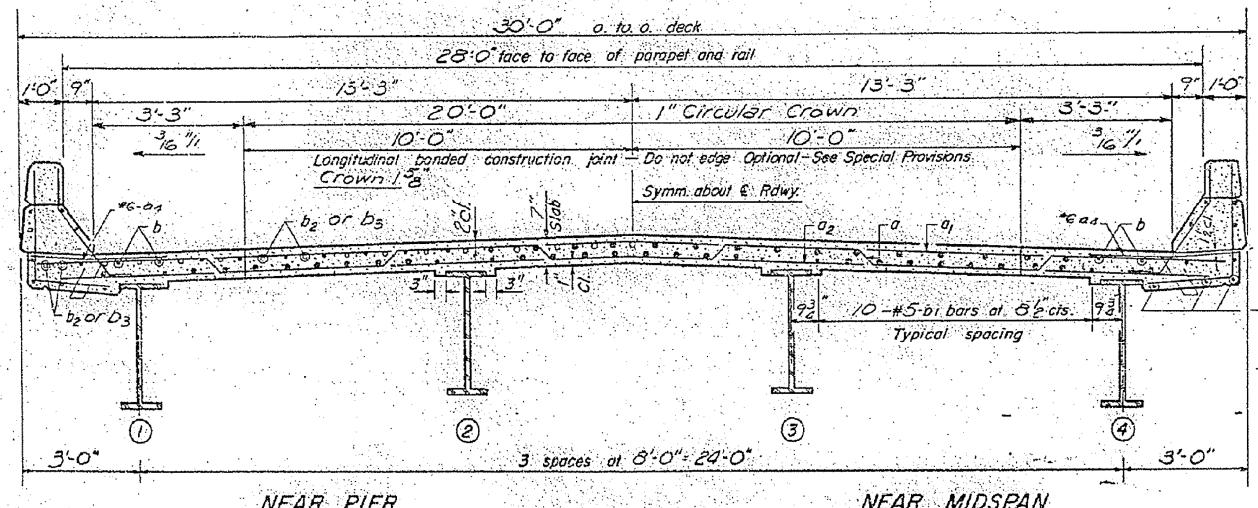
STATE OF ILLINOIS  
DEPARTMENT OF PUBLIC WORKS & BUILDINGS  
DIVISION OF HIGHWAYS

ROUTE NO.	SECTION	COUNTY	TOTAL SHEETS	SHEET NO.
57	10-2	CHAMPAIGN	45	12
PROJECT NO. 70F25				10 SHEETS

Note:  
Bars indicated thus 20 x 3 - #5 etc.  
indicates 20 lines of bars with 3  
lengths per line.  
Min. bar laps = 20 dia.



Note: For details and spacings  
of c thru ea and da, see  
sheet #4.



BILL OF MATERIAL

Bar	No	Size	Length	Shape
a	239	#5	30'-0"	
a1	254	#5	29'-3"	
a2	254	#5	28'-0"	
a3	6	#5	27'-0"	
aa	494	#6	2'-0"	
b	256	#5	29'-0"	
b1	252	#5	33'-0"	
b2	56	#6	20'-6"	
b3	29	#6	25'-0"	
b4	8	#8	33'-9"	
b5	8	#8	9'-0"	
b6	8	#8	7'-0"	
b7	16	#8	27'-3"	
b8	8	#8	9'-9"	
b9	8	#5	33'-9"	
b10	8	#5	24'-0"	
b11	8	#5	7'-0"	
b12	16	#5	26'-9"	
b13	8	#5	26'-9"	
c	452	#4	2'-7"	
d	448	#5	3'-5"	
d2	96	#4	2'-4"	
x	54	#6	5'-0"	
Reinforcement bars				Lbs. 53,430
Structural Steel				Lbs. 150,660
Class J Concrete				Cu. Yds. 178.7

\* Weight of bearing assemblies with lead  
plates and anchor bolts are included  
as structural steel.  
Est Wt = 59,200 Lbs

DESIGNED: *Alfonso M.*  
CHECKED: *Tommy S. Chilton*  
DRAWN: *J. SCHNEIDER A.A. O.L. Beemer*  
APPROVED: *W. J. [Signature]*

APRIL 18 1966  
EXAMINED: *[Signature]*  
PASSED: *[Signature]*

I-4-L (>14') 8-1-55

STATE OF ILLINOIS  
DEPARTMENT OF TRANSPORTATION

AS-BUILT PLANS  
LOCATION #1 S.N. 010-0161

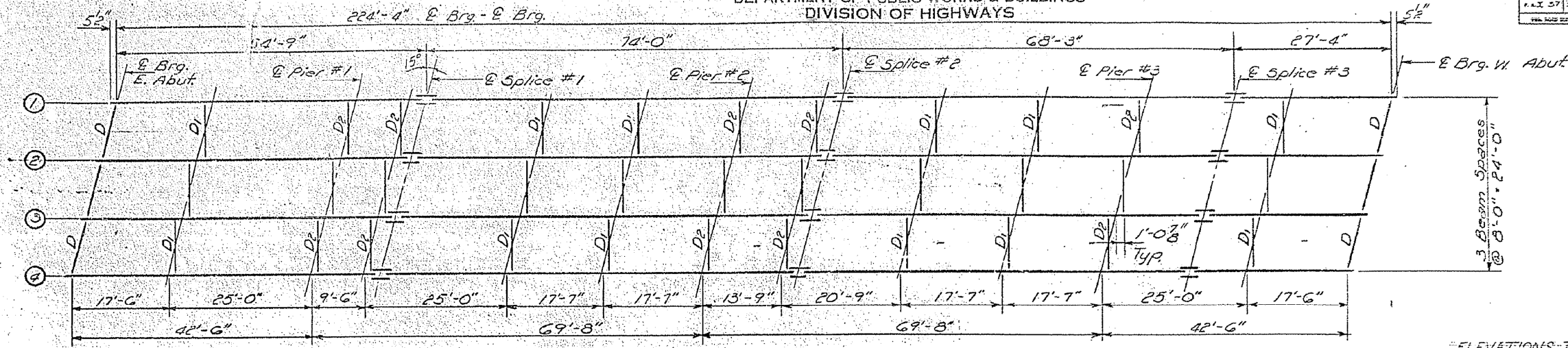
F.A.I. RTE.	SECTION	COUNTY	TOTAL SHEETS	SHEET NO.
57	*	CHAMPAIGN	13	8
* DS BRIDGE PAINTING 2021-02			CONTRACT NO. 70F25	

SCALE: NONE SHEET 2 OF 3 SHEETS STA. TO STA.

MODEL: S:\MODEL\NAMES FILE: N:\I-57\CHAMPAIGN\70F25\CADD\B3\CAD\PROJECTS\70F25-10-2\I-57-10-2.dwg

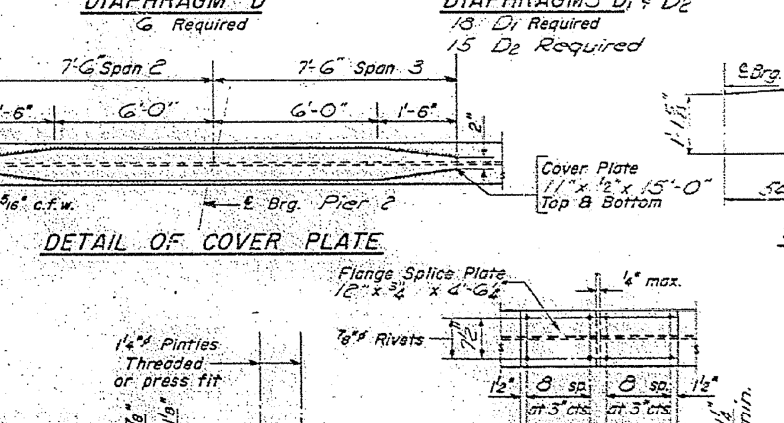
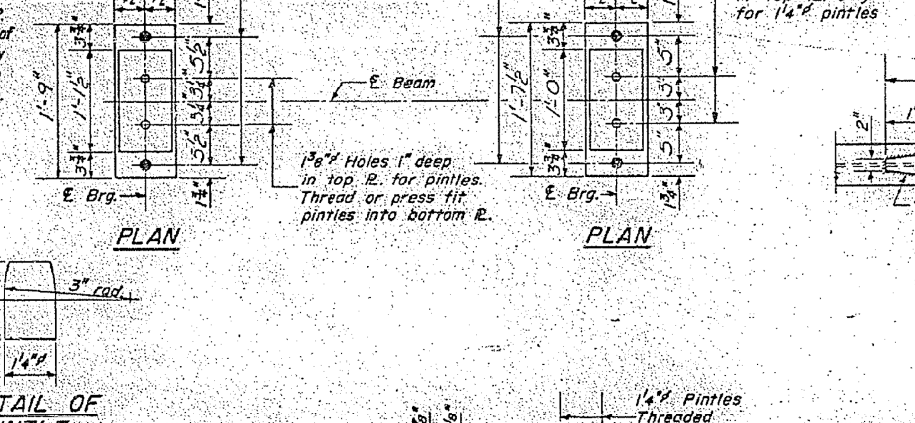
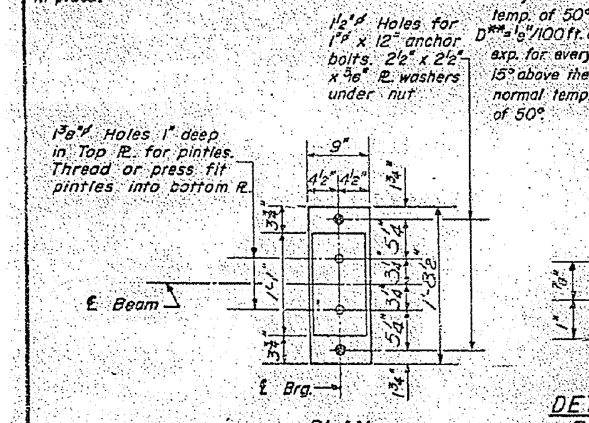
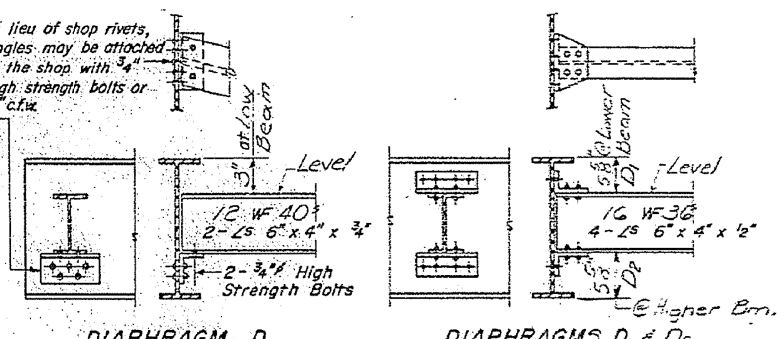
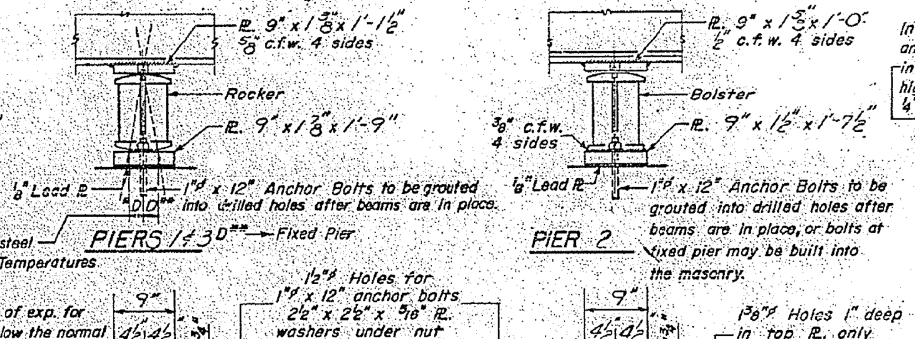
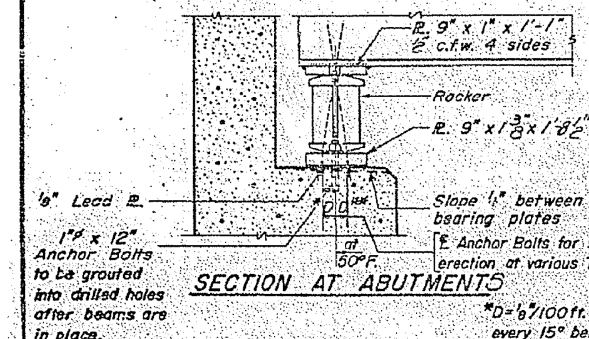
STATE OF ILLINOIS  
DEPARTMENT OF PUBLIC WORKS & BUILDINGS  
DIVISION OF HIGHWAYS

DATE	SECTION	COUNTY	DATE	SHEET NO.
10-37	4B-2	CHAMPAIGN	45	13
SHEET NO. 3				
10 SHEETS				



ELEVATIONS TOP OF 36WF135

	E. Brg. E. Ab.	E. Pier #1	E. Splice #1	E. Pier #2	E. Splice #2	E. Pier #3	E. Splice #3	E. Brg. W. Ab.
Beam 1	793.01	793.11	793.14	792.97	792.92	792.98	792.22	791.57
Beam 2	793.13	793.23	793.26	793.09	793.04	793.50	792.34	791.99
Beam 3	793.13	793.23	793.26	793.09	793.04	793.50	792.34	791.99
Beam 4	793.01	793.11	793.14	792.97	792.92	792.98	792.22	791.57



DESIGNED: *Agha Ali*

CHECKED: *Henry S. Giffon*

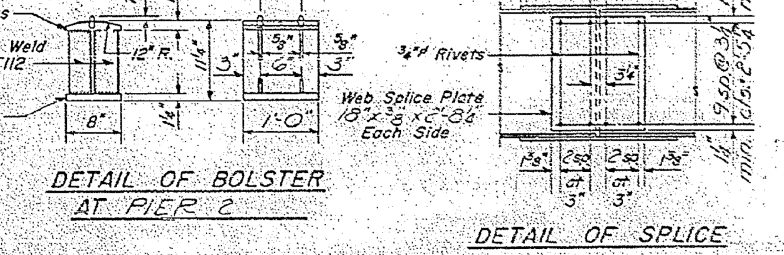
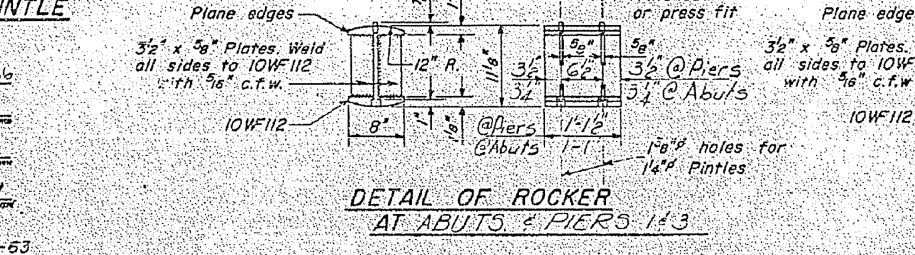
DRAWN: *J.D.W. A. Sausman, Jr.*

APPROVED: *H.J. Giffon*

DATE: April 13, 1946

REVISIONS:

- 1-2-C
- 7-2-52
- Rev. 11-9-62
- Rev. 8-16-63
- Rev. 12-10-63



STRUCTURAL STEEL  
F.A.I. RT. 57 SEC. 10-37HB2  
CHAMPAIGN COUNTY  
STA. 1472+27.27

MODEL: ST0001\NAMES  
FILE: ST0001\Public\Documents\DOT Office\Drawings\Projects\057025\057025\CADD\057025-13-Submittal.dwg

USER NAME = PiersonTJ	DESIGNED -	REVISED -
	DRAWN -	REVISED -
PLOT SCALE = 40.0000' / in.	CHECKED -	REVISED -
PLOT DATE = 1/11/2021	DATE -	REVISED -

STATE OF ILLINOIS  
DEPARTMENT OF TRANSPORTATION

AS-BUILT PLANS  
LOCATION #1 S.N. 010-0161

SCALE: NONE SHEET 3 OF 3 SHEETS STA. TO STA.

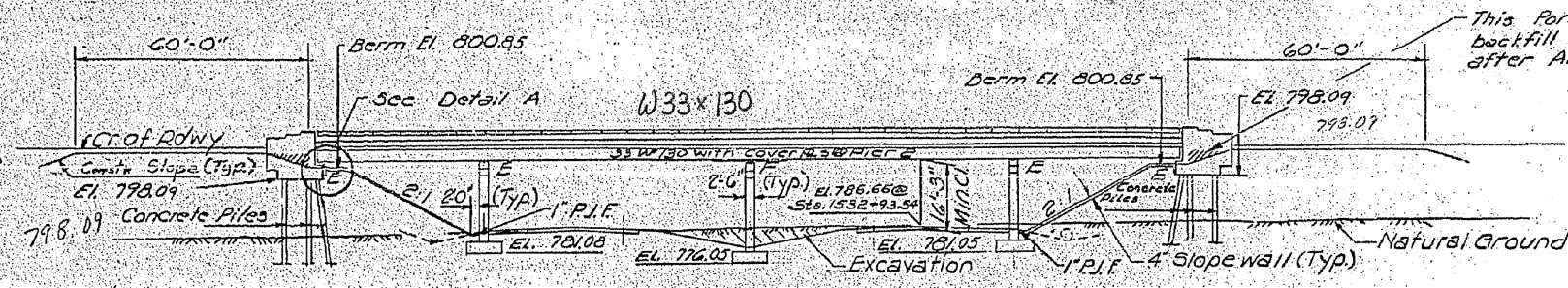
F.A.I. RTE.	SECTION	COUNTY	TOTAL SHEETS	SHEET NO.
57		CHAMPAIGN	13	9
* DS BRIDGE PAINTING 2021-02		CONTRACT NO. 70F25		
ILLINOIS FED. AID PROJECT				



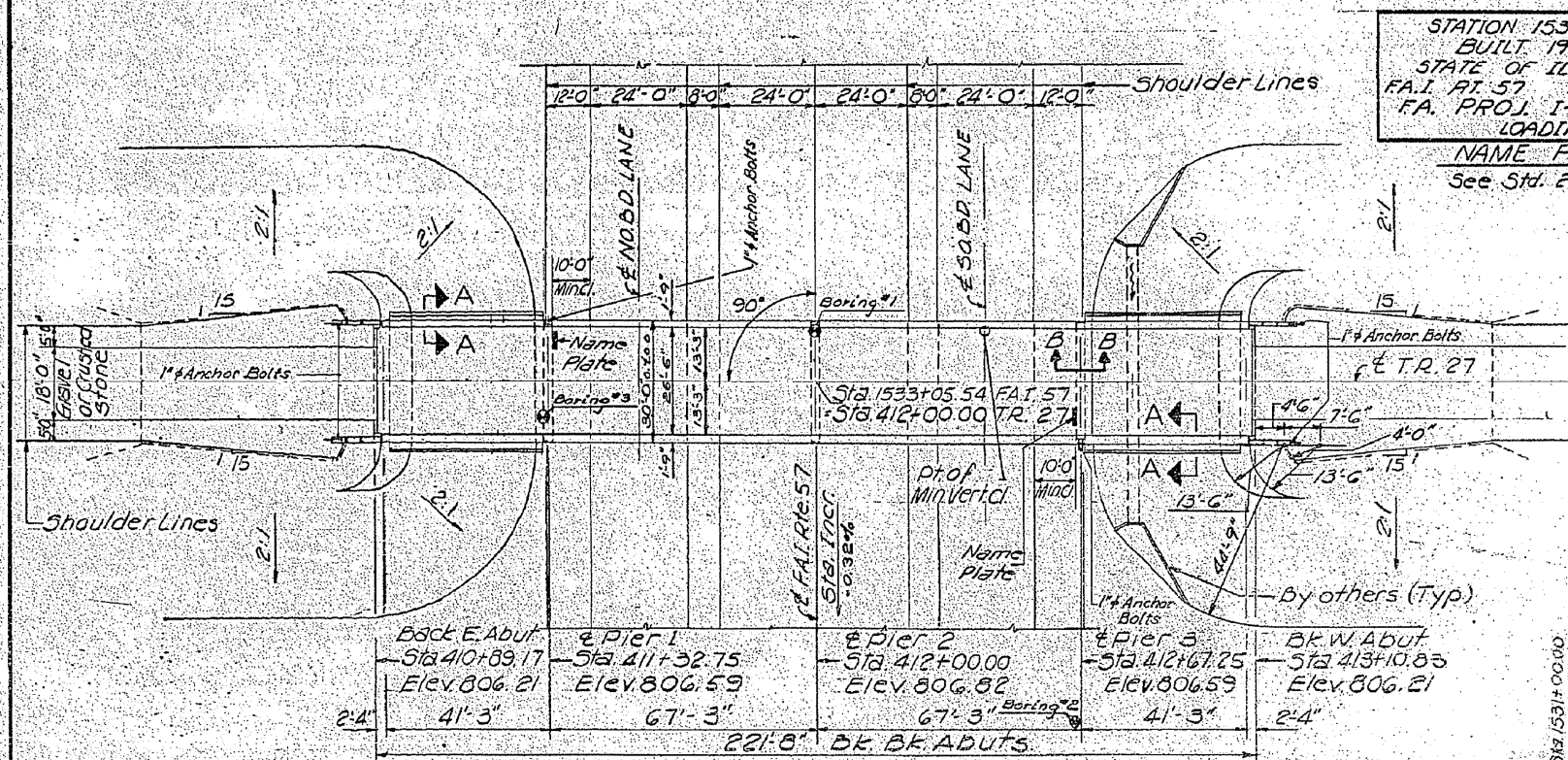
B.M. Neiland Bottle Cap in Power Pole 53' RT.  
Sta 1533+10 Elev. 788.20

STATE OF ILLINOIS  
DEPARTMENT OF PUBLIC WORKS & BUILDINGS  
DIVISION OF HIGHWAYS

PROJECT NO.	SECTION	COUNTY	SHEET NO.
10-37	HB-3	CHAMPAIGN	49
FA.I. 57			13
SHEET NO. 1			10 SHEETS

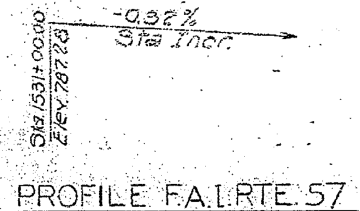


ELEVATION

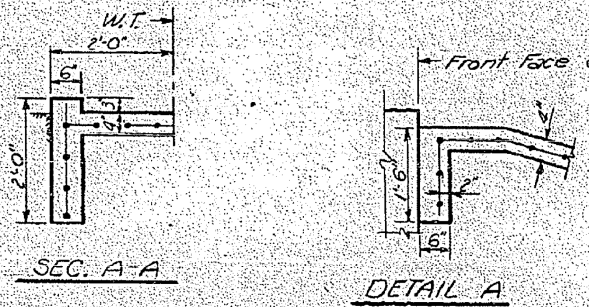


PLAN

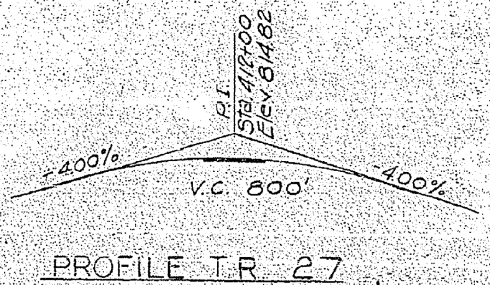
STATION 1533+05.54  
BUILT 196 BY  
STATE OF ILLINOIS  
FA.I. RT. 57 SEC. 10-37 HB-3  
FA. PROJ. I-IG-57-5(64)  
LOADING HS-15  
NAME PLATE  
See Std. 2113-1



PROFILE FA.I. RTE. 57

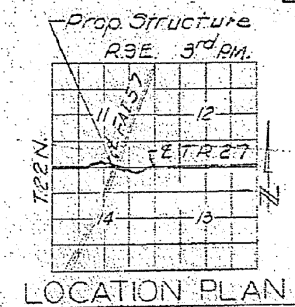


DESIGNED	APR 10 1965
CHECKED	
DRAWN	
CHECKED	



PROFILE TR 27

DESIGN STRESSES  
Max. Fly. Pressure = 2 tsf  
fc = 1400 psi, Super: Sub  
fs = 20,000 psi Reinf.  
fs = 20,000 psi Struct. (A-36)  
Vc = 75 psi  
n = 10  
Allow 4 Def / 1000  
LOADING HS-15-44



LOCATION PLAN

**GENERAL NOTES**

Coarse aggregate to be used in parapet handrails & wingwalls must be absolutely free of chert, flint, limonite, lignite & soft sandstone. The concrete floor shall be finished in accordance with Article 51.19 of the Standard Specifications.

Slope wall shall be reinforced with welded wire fabric G<sub>16</sub> mesh, weighing 58 #/100 sq. ft.

All reinforcement bars shall be lapped 20 diameters unless otherwise shown.

Rivets 3/8", Open Holes 1 1/8", unless otherwise noted.

Anchor Bolts shall be set before fastening diaphragms over supports.

The exposed surfaces of the Expansion guards shall be given two shop coats of red lead paint, the contact surfaces shall be given one coat of red lead paint. Anchor studs shall not be painted.

Expansion guards are included in the quantity of Structural Steel. Est. Weight = 773 lbs.

Except as otherwise provided, all Structural Steel shall receive one shop coat of red lead paint and two field coats of paint. See Special Provisions for field paint.

All Structural Steel shall conform to A.S.T.M. Specification A-36.

Excavation for portions of structures in the embankment shall not be classified.

The Contractor shall drive one concrete test pile in a permanent location at the West Abutment, as directed by the Engineer, before ordering the remaining piles.

Concrete piles at abutments shall be driven in holes precored through the embankment in accordance with Article G.O. 9 (c) of the Standard Specifications.

Field welding of construction accessories to beams or girders will not be permitted on the bottom flanges and for a distance of 1/4 of the span each way from pier supports on top flanges. Field welding in other areas will be permitted only when approved by the Engineer.

Permanent forms will not be permitted in forming concrete floor.

**TOTAL BILL OF MATERIAL**

Item	Unit	Super	Sub	Total
Class A Exc. for Structures	Cu Yds		203	203
Class X Concrete	Cu Yds	202.5	204.5	407.0
Protective Coat	Sq Yds		829	829
Structural Steel	Lbs.	141,740		141,740
Aluminum Handrail	Lin. Ft.	437		437
Reinforcement Bars	Lbs.	50,590	18,200	68,790
Concrete Piles	Lin. Ft.		585	585
Test Piles (Concrete)	Each		1	1
Name Plates	Each		2	2
Slope Wall	Sq Yds		374	374

\* Includes inside vertical face top & exposed end of abutment wings

**GENERAL PLAN & ELEVATION**  
TR 27 OVER FA.I. RTE 57  
PROJ I-IG-57-5(64)250  
FA.I. RTE 57 SEC. 10-37 HB-3  
CHAMPAIGN COUNTY  
STA 1533+05.54 FA.I. RTE 57  
STA 412+00.00 TR 27

MODEL: MODELNAME  
FILE: NAME.ctb  
PROJECT: PROJECTNAME  
OFFICE: OFFICE  
DATE: DATE  
SCALE: SCALE  
PLOT DATE: PLOT DATE

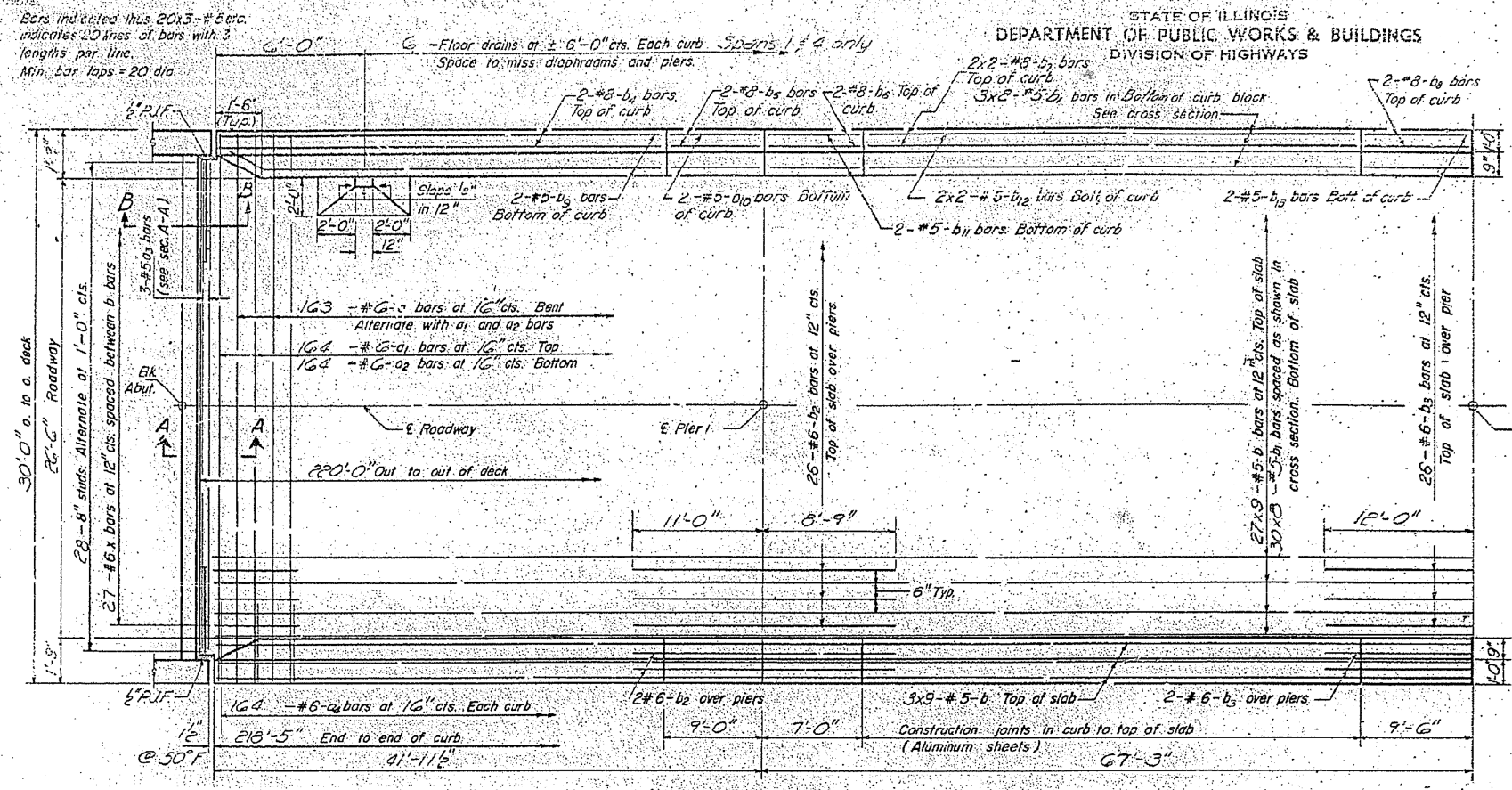
USER NAME = PiersonTJ	DESIGNED -	REVISED -
	DRAWN -	REVISED -
PLOT SCALE = 40.0000 "/in.	CHECKED -	REVISED -
PLOT DATE = 1/11/2021	DATE -	REVISED -

STATE OF ILLINOIS  
DEPARTMENT OF TRANSPORTATION

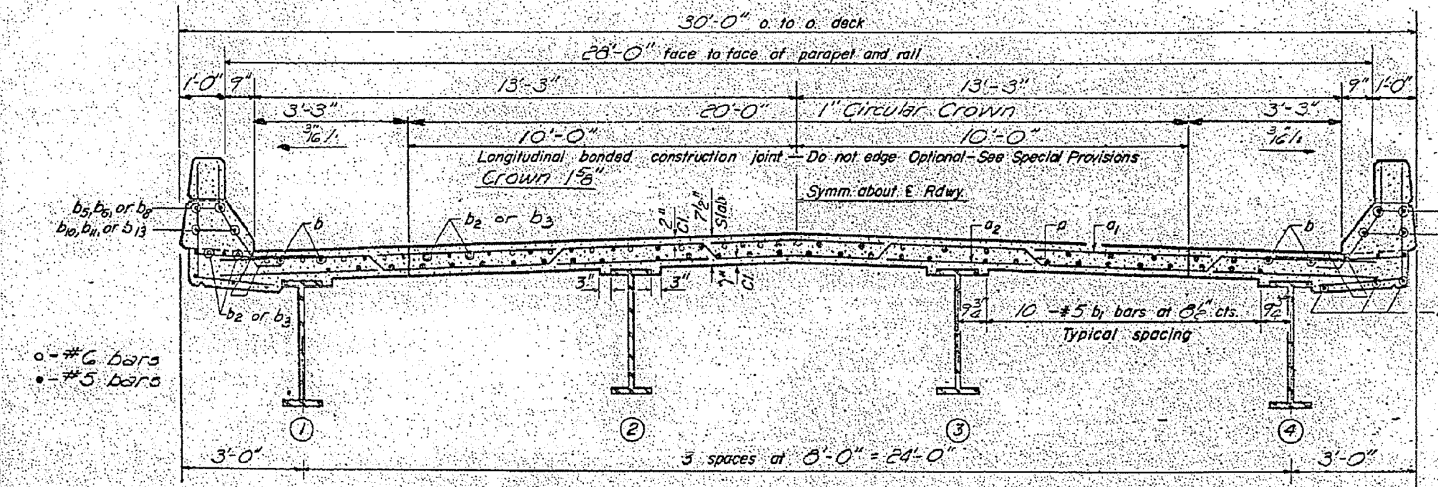
AS-BUILT PLANS  
LOCATION #2 S.N. 010-0189

SCALE: NONE	SHEET 1	OF 3 SHEETS	STA.	TO STA.
-------------	---------	-------------	------	---------

F.A.I. RTE.	SECTION	COUNTY	TOTAL SHEETS	SHEET NO.
57	*	CHAMPAIGN	13	10
* DS BRIDGE PAINTING 2021-02 CONTRACT NO. 70F25				
ILLINOIS FED. AID PROJECT				



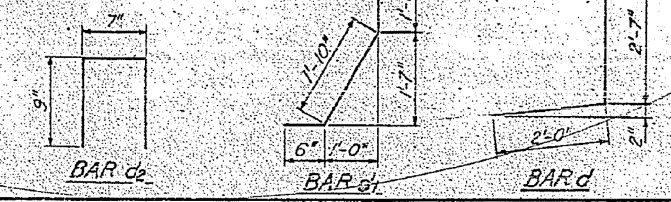
HALF PLAN



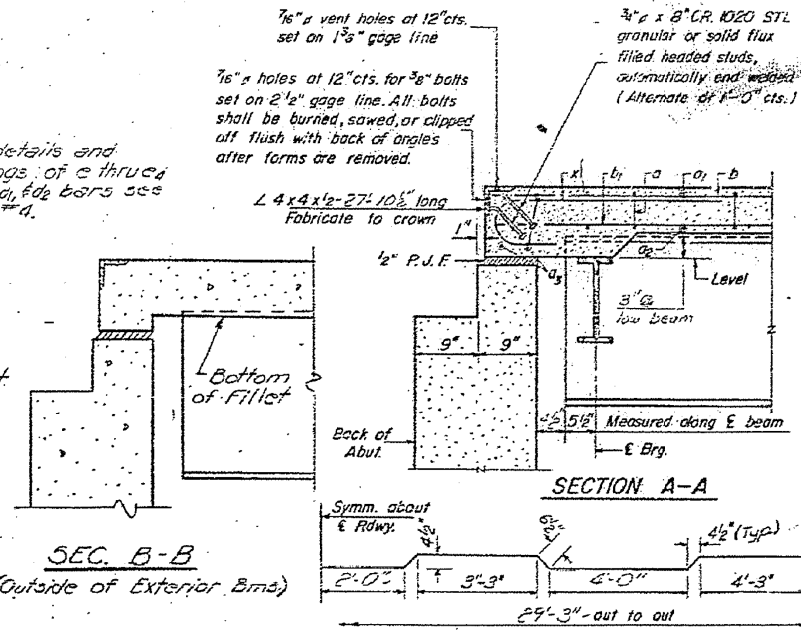
NEAR PIER

NEAR MIDSPAN

CROSS SECTION  
LOOKING WEST

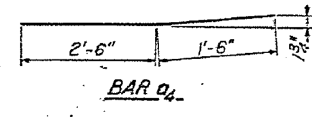


Note: For details and spacings of e thru d and d1, d2 bars see sheet #4.



SECTION A-A

SECTION B-B  
(Outside of Exterior Brm)



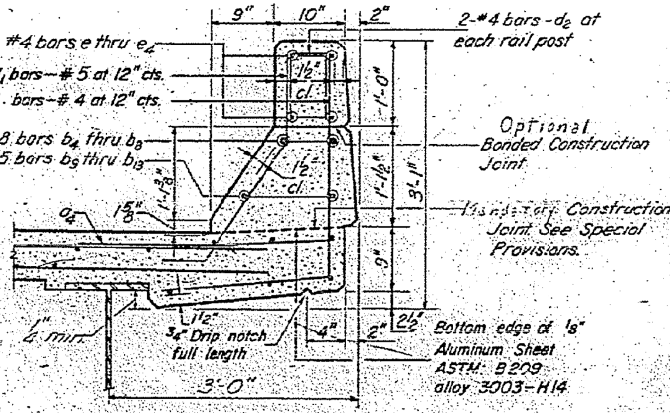
BILL OF MATERIAL

Bar No.	Size	Length	Shape
a	1/2	30'-3"	
a1	1/2	29'-3"	
a2	1/2	28'-0"	
a3	5	27'-3"	
a4	5	4'-0"	
b	297	5	25'-6"
b1	228	5	28'-9"
b2	60	6	19'-9"
b3	30	6	24'-0"
b4	8	8	32'-9"
b5	8	8	3'-9"
b6	8	8	6'-9"
b7	16	8	26'-8"
b8	8	8	9'-3"
b9	8	5	32'-9"
b10	8	5	8'-9"
b11	8	5	6'-9"
b12	16	5	26'-0"
b13	8	5	9'-3"
d	438	4	4'-7"
d1	432	5	3'-3"
d2	96	4	2'-1"
x	54	6	5'-0"

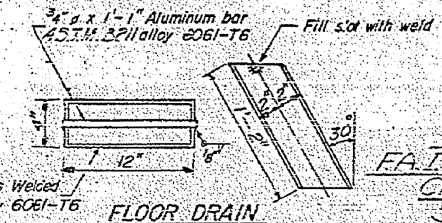
Reinforcement Bars	Lbs.	50,890
Structural Steel	Lbs.	141,740
Class X Concrete	Cu Yds.	202.5

Weight of bearing assemblies with lead plates and anchor bolts are included as structural steel. Est. Wt = 5500#



CURB SECTION

Cost of Aluminum Drains and Sheets shall be incidental to Class X Concrete



FLOOR DRAIN

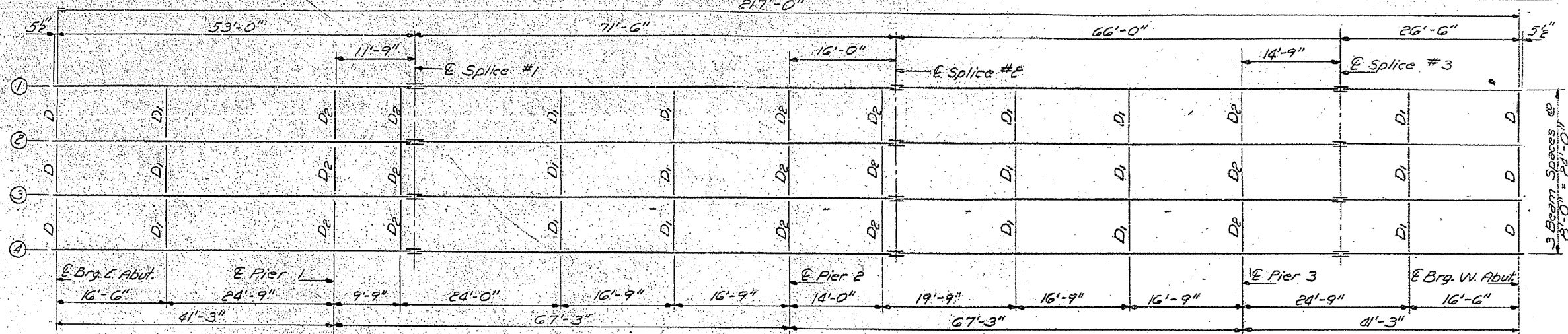
DESIGNED	Abhar Ali	EXAMINED	Dec 19 2020
CHECKED	James King	PASSED	
DRAWN	A.A. DL Beamer	APPROVED	

I-4-0 8-1-65

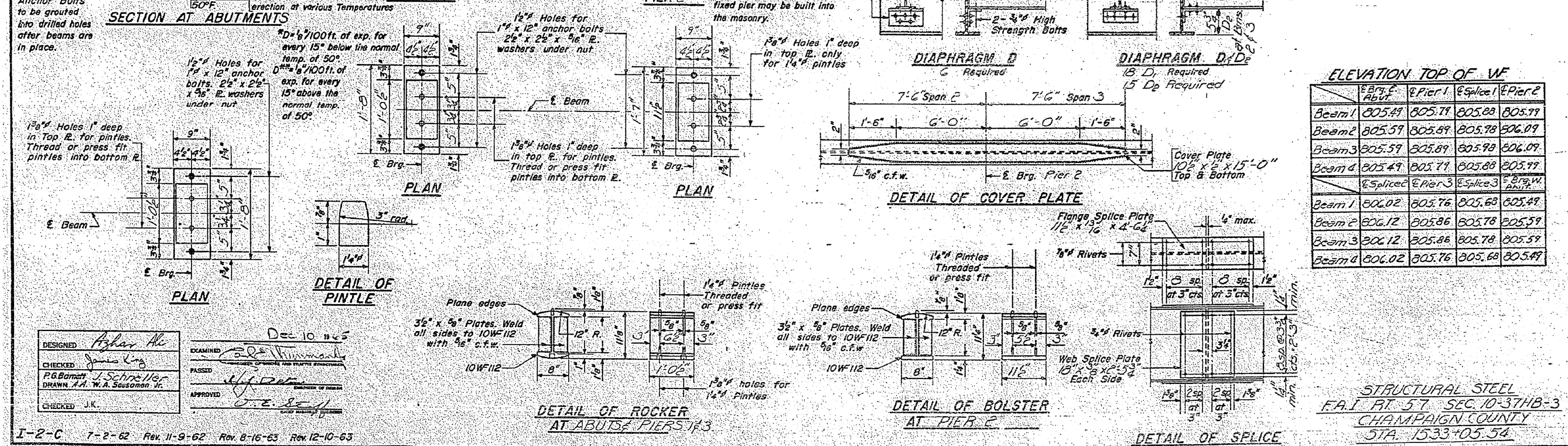
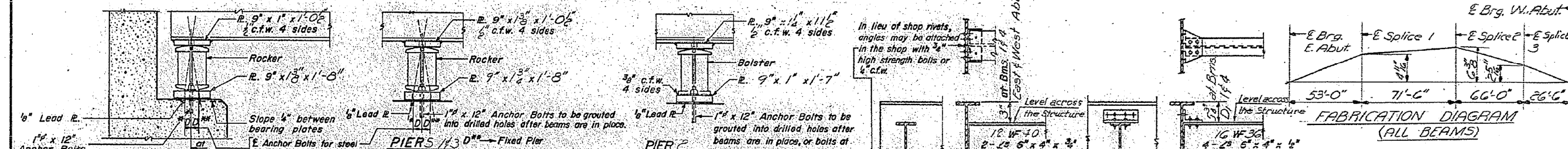
SUPERSTRUCTURE  
F.A.I. RI-57 SEC 10-37HB-3  
CHAMPAIGN COUNTY  
STA. 1533+05.54

MODEL: S:\MODEL\NAME: FILE: 70252.DWG: P:\PROJECTS\70252\DWG\70252.DWG: P:\PROJECTS\70252\DWG\70252.DWG





FRAMING PLAN (All beams are 33WF130)



ELEVATION TOP OF WF

	E Brg. W. Abut.	E Pier 1	E Splice 1	E Pier 2
Beam 1	805.49	805.77	805.68	805.77
Beam 2	805.59	805.89	805.78	806.09
Beam 3	805.59	805.89	805.78	806.09
Beam 4	805.49	805.77	805.68	805.77
E Splice 2				
Beam 1	806.02	805.76	805.68	805.49
Beam 2	806.12	805.86	805.78	805.59
Beam 3	806.12	805.86	805.78	805.59
Beam 4	806.02	805.76	805.68	805.49

STRUCTURAL STEEL  
F.A.I. RT. 57 SEC. 10-37HB-3  
CHAMPAIGN COUNTY  
STA. 1533+05.54

DESIGNED: *Azhar Ali*  
CHECKED: *James King*  
P.G. Barnett, J. Schreiner, W.A. Sausman, Jr.  
DRAWN: *W.A. Sausman, Jr.*  
CHECKED: *J.K.*

EXAMINED: *Carl Wimmer*  
PASSED: *W. J. DeWitt*  
APPROVED: *J.E. Sausman*

Dec 10 1965

I-2-C 7-2-62 Rev. 11-9-62 Rev. 8-16-63 Rev. 12-10-63



