

STATE OF ILLINOIS  
DEPARTMENT OF TRANSPORTATION

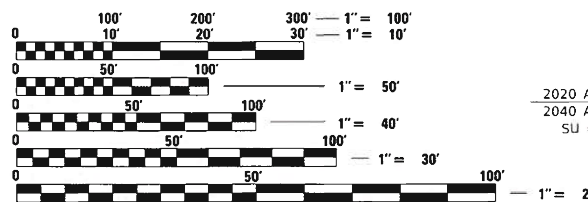
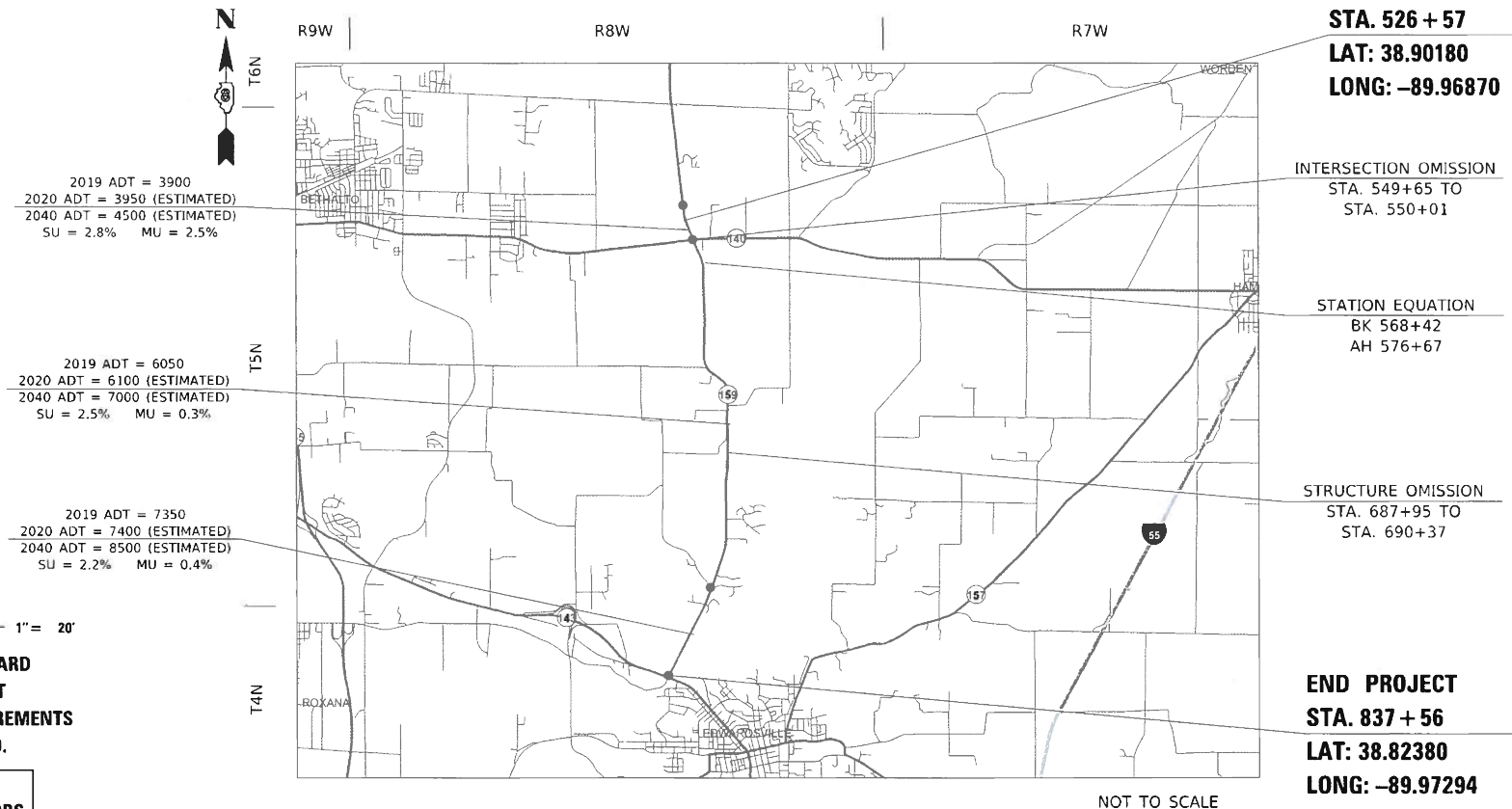
F.A.P. RTE.	SECTION	COUNTY	TOTAL SHEETS	SHEET NO.
604	(103,125)RS-3	MADISON	9	1
		ILLINOIS	CONTRACT NO. 76N71	

FOR INDEX OF SHEETS, SEE SHEET NO. 2

# PROPOSED HIGHWAY PLANS

FAP ROUTE 604 (IL 159)  
SECTION (103,125)RS-3  
PROJECT STP-S0DJ(583)  
MICROSURFACING 1 PASS  
MADISON COUNTY

C-98-040-22



FULL SIZE PLANS HAVE BEEN PREPARED USING STANDARD ENGINEERING SCALES. REDUCED SIZED PLANS WILL NOT CONFORM TO STANDARD SCALES. IN MAKING MEASUREMENTS ON REDUCED PLANS, THE ABOVE SCALES MAY BE USED.

J.U.L.I.E.  
JOINT UTILITY LOCATION INFORMATION FOR EXCAVATORS  
1-800-892-0123  
OR 811

PROJECT ENGINEER: HERVE GELIN (618) 346-3179  
PROJECT MANAGER: BILLIE OWEN (618) 346-3209

GROSS LENGTH = 31,099 FT. = 5.89 MILE  
NET LENGTH = 29,996 FT. = 5.68 MILE

CONTRACT NO. 76N71

STATE OF ILLINOIS  
DEPARTMENT OF TRANSPORTATION

SUBMITTED *Sept 29, 2020*  
*Keith Roberts* REGIONAL ENGINEER

January 29, 2021  
*Scott A. Etk*  
ENGINEER OF DESIGN AND ENVIRONMENT

January 29, 2021  
*James J. Gu*  
DIRECTOR OF HIGHWAYS PROJECT IMPLEMENTATION

PRINTED BY THE AUTHORITY  
OF THE STATE OF ILLINOIS

## INDEX OF SHEETS

- 1 COVER SHEET
- 2 INDEX OF SHEETS, HIGHWAY STANDARDS, GENERAL NOTES, AND COMMITMENTS
- 3-4 SUMMARY OF QUANTITIES
- 5-6 TYPICAL SECTIONS
- 7-8 SCHEDULES
- 9 DETAILS

## HIGHWAY STANDARDS

- 000001-08 STANDARD SYMBOLS ABBREVIATIONS AND PATTERNS
- 701201-05 LANE CLOSURE, 2L, 2W, DAY ONLY, FOR SPEEDS  $\geq$  45 MPH
- 701306-04 LANE CLOSURE, 2L, 2W, SLOW MOVING OPERATIONS, DAY ONLY FOR SPEEDS  $\geq$  45 MPH
- 701311-03 LANE CLOSURE, 2L, 2W, MOVING OPERATIONS - DAY ONLY
- 701701-10 URBAN LANE CLOSURE, MULTILANE INTERSECTION
- 701901-08 TRAFFIC CONTROL DEVICES
- 780001-05 TYPICAL PAVEMENT MARKINGS

## COMMITMENTS

NONE

## GENERAL NOTES

- 1 THE FOLLOWING UTILITIES KNOWN TO HAVE FACILITIES WITHIN THE PROJECT AREA ARE AS FOLLOWS:
  - \* AMEREN ILLINOIS
  - \* AT&T ILLINOIS
  - \* BUCKEYE PARTNERS L.P. - WOOD RIVER PIPELINE
  - \* CHARTER COMMUNICATIONS, INC.
  - \* CITY OF EDWARDSVILLE
  - \* MARATHON PIPELINE LLC
  - \* NORTHEAST CENTRAL COUNTY PUBLIC WATER DISTRICT
  - \* PLAINES MARKETING, LP
  - \* TC ENERGY
- 2 NO SURVEY WAS PERFORMED FOR THIS PROJECT. THE PLANS WERE CREATED USING MICROFILM AND FIELD MEASUREMENTS.
- 3 THE DEPARTMENT STRONGLY ENCOURAGES THE PRIME CONTRACTOR AND THEIR APPROVED SUB-CONTRACTORS TO HIRE MINORITY, WOMEN AND DISADVANTAGED INDIVIDUALS FROM ITS FEDERALLY FUNDED HIGHWAY CONSTRUCTION CAREERS TRAINING PROGRAM (HCCTP) TO HELP MEET WORKFORCE AND TRAINEE GOALS. THIS PROGRAM IS TRAINING MINORITIES, WOMEN AND DISADVANTAGED INDIVIDUALS IN HIGHWAY CONSTRUCTION-RELATED SKILLS, E.G., MATH FOR THE TRADES, JOB READINESS, TECHNICAL SKILLS COURSEWORK (CARPENTRY, CONCRETE FLATWORK, BLUEPRINT READING, SITE PLANS, SITE WORK, TOOLS USE, ETC.) AND OSHA 10 HOUR CERTIFICATION, TO PREPARE THEM FOR A CAREER IN THE HIGHWAY CONSTRUCTION TRADES. GRADUATES ARE WELL-TRAINED AND READY TO BECOME PRODUCTIVE ENTRY-LEVEL CONSTRUCTION WORKERS. CONTACT THE DISTRICT 8 EEO OFFICE AT 618-346-3360 AND/OR THE HCCTP COORDINATOR AT 618-874-6528 TO LEARN MORE ABOUT THE PROGRAM AND FOR ASSISTANCE IN MEETING WORKFORCE AND TRAINEE GOALS.

REV. - MS

MODEL: Default  
 FILE: Main1.dwg  
 Path: \\p1\p1room.dwg  
 I:\Users\challandeske\Documents\DOT\_Offices\District 8\Projects\76N71\CADD\Drawings\DOT\_Offices\District 8\Projects\76N71-1-shc-gen-note.dgn

	USER NAME = challandeske	DESIGNED -	REVISED -	<b>STATE OF ILLINOIS DEPARTMENT OF TRANSPORTATION</b>	<b>INDEX OF SHEETS, HIGHWAY STANDARDS GENERAL NOTES, AND COMMITMENTS</b>	F.A.P. RTE.	SECTION	COUNTY	TOTAL SHEETS	SHEET NO.	
		DRAWN -	REVISED -			604	(103,125)RS-3	MADISON	9	2	
	PLOT SCALE = 100.0000' / in.	CHECKED -	REVISED -			CONTRACT NO. 76N71					
	PLOT DATE = 9/25/2020	DATE -	REVISED -			SCALE:	SHEET OF SHEETS	STA. TO STA.	ILLINOIS FED. AID PROJECT		

CODE NO.	ITEM	UNIT	TOTAL QUANTITY	CONSTR. CODE
				80% FED 20% STATE
				ROADWAY 0005 URBAN
40400001	FIBER-MODIFIED ASPHALT CRACK SEALING	FOOT	44874	44874
40400020	BUMP REMOVAL	EACH	12	12
40400118	MICRO-SURFACING, SINGLE PASS	SQ YD	89386	89386
40600290	BITUMINOUS MATERIALS (TACK COAT)	POUND	20112	20112
67000400	ENGINEER'S FIELD OFFICE, TYPE A	CAL MO	3	3
67100100	MOBILIZATION	L SUM	1	1
70100450	TRAFFIC CONTROL AND PROTECTION, STANDARD 701201	L SUM	1	1
70100460	TRAFFIC CONTROL AND PROTECTION, STANDARD 701306	L SUM	1	1
70102635	TRAFFIC CONTROL AND PROTECTION, STANDARD 701701	L SUM	1	1
70300100	SHORT TERM PAVEMENT MARKING	FOOT	8028	8028
70300150	SHORT TERM PAVEMENT MARKING REMOVAL	SQ FT	892	892
70300210	TEMPORARY PAVEMENT MARKING LETTERS AND SYMBOLS	SQ FT	166	166
70300220	TEMPORARY PAVEMENT MARKING - LINE 4"	FOOT	91847	91847
70300250	TEMPORARY PAVEMENT MARKING - LINE 8"	FOOT	150	150

MODEL: Default  
 FILE: \\nlsr1c1\pub\lansom.dwg  
 ILLINOIS.GOV\PWIDOT\Documents\DOT\_Offices\District\_8\Projects\076N71\CADD\DATA\CAD\Inlets\076N71-1st-500.dgn

USER NAME = challandeske	DESIGNED -	REVISED -
	DRAWN -	REVISED -
PLOT SCALE = 100.0000' / in.	CHECKED -	REVISED -
PLOT DATE = 9/22/2020	DATE -	REVISED -

**STATE OF ILLINOIS  
DEPARTMENT OF TRANSPORTATION**

**SUMMARY OF QUANTITIES**

SCALE: SHEET 1 OF 2 SHEETS STA. TO STA.

F.A.P. RTE.	SECTION	COUNTY	TOTAL SHEETS	SHEET NO.
604	(103.125)RS-3	MADISON	9	3
CONTRACT NO. 76N71			ILLINOIS FED. AID PROJECT	

CONSTR. CODE

80% FED  
20% STATE

ROADWAY  
0005  
URBAN

CODE NO.	ITEM	UNIT	TOTAL QUANTITY	ROADWAY
70300260	TEMPORARY PAVEMENT MARKING - LINE 12"	FOOT	333	333
70300280	TEMPORARY PAVEMENT MARKING - LINE 24"	FOOT	156	156
* 78000100	THERMOPLASTIC PAVEMENT MARKING - LETTERS AND SYMBOLS	SQ FT	166	166
* 78000200	THERMOPLASTIC PAVEMENT MARKING - LINE 4"	FOOT	91847	91847
* 78000500	THERMOPLASTIC PAVEMENT MARKING - LINE 8"	FOOT	150	150
* 78000600	THERMOPLASTIC PAVEMENT MARKING - LINE 12"	FOOT	333	333
* 78000650	THERMOPLASTIC PAVEMENT MARKING - LINE 24"	FOOT	156	156
* 78100100	RAISED REFLECTIVE PAVEMENT MARKER	EACH	378	378
78300200	RAISED REFLECTIVE PAVEMENT MARKER REMOVAL	EACH	378	378
78300201	PAVEMENT MARKING REMOVAL - GRINDING	SQ FT	31427	31427
X7030005	TEMPORARY PAVEMENT MARKING REMOVAL	SQ FT	31427	31427
Ø Z0076600	TRAINEES	HOUR	500	500
Ø Z0076604	TRAINEES TRAINING PROGRAM GRADUATE	HOUR	500	500

\* SPECIALTY ITEM Ø 0042

MODEL: Default  
 FILE NAME: P:\p1g1ancom.dwt\illinois.gov-PWD\DOT\Documents\DOT\_Offices\District\_B\Projects\076N71\CADD\Drawings\CAD\Notes\076N71-sh-500.dgn

USER NAME = chailandeske	DESIGNED -	REVISED -
	DRAWN -	REVISED -
PLOT SCALE = 100.0000' / in.	CHECKED -	REVISED +
PLOT DATE = 9/22/2020	DATE -	REVISED +

**STATE OF ILLINOIS  
DEPARTMENT OF TRANSPORTATION**

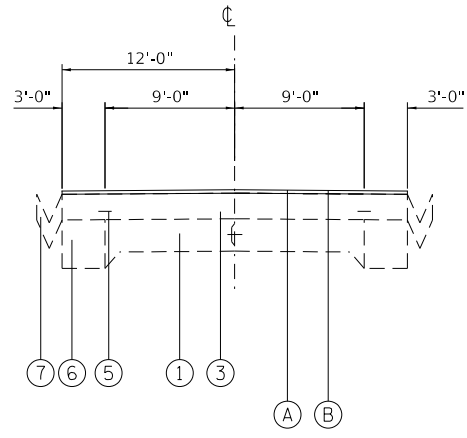
**SUMMARY OF QUANTITIES**

SCALE: SHEET 2 OF 2 SHEETS STA. TO STA.

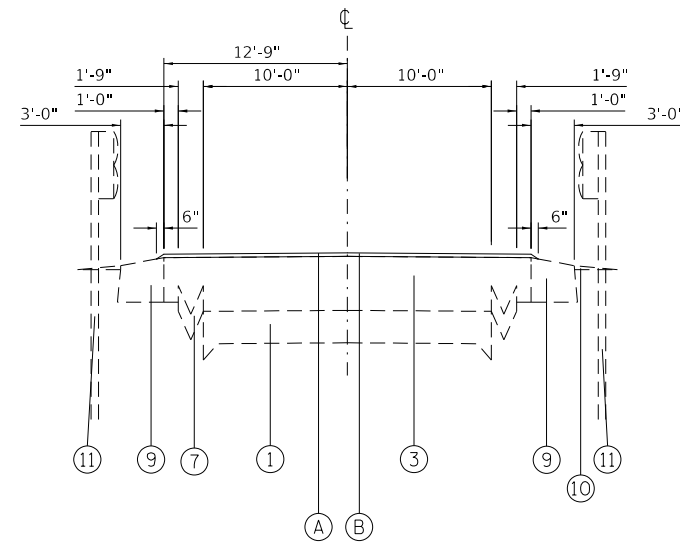
F.A.P. RTE.	SECTION	COUNTY	TOTAL SHEETS	SHEET NO.
604	(103,125)RS-3	MADISON	9	4
ILLINOIS FED. AID PROJECT			CONTRACT NO. 76N71	

REV. - MS



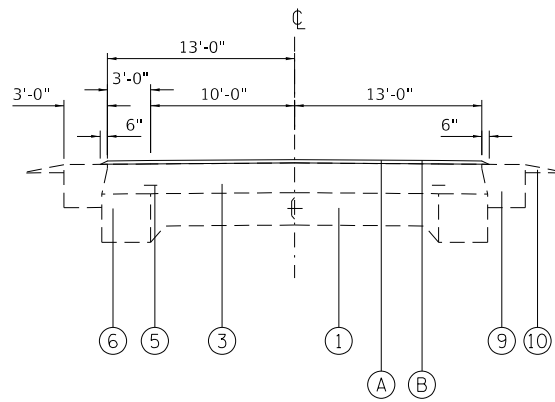


STA. 781+14 TO STA. 791+47



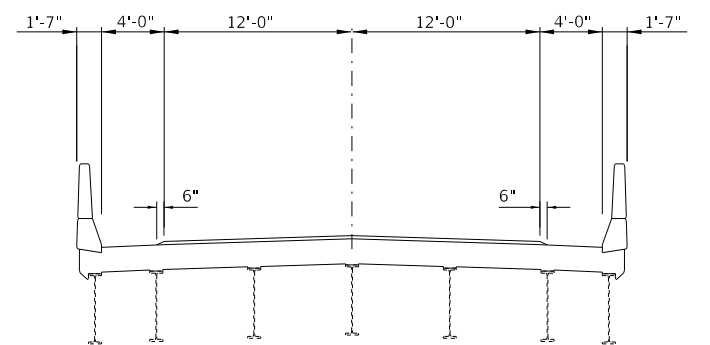
STA. 831+25 TO STA. 834+61

PAVED SHOULDER TYPICAL BOTH SIDES  
 STA. 831+20 TO STA. 834+67  
 STA. 830+76 TO STA. 834+67



STA. 713+00 TO STA. 781+14  
 STA. 791+47 TO STA. 827+02

NOTE: PAVED SHOULDER TYPICAL BOTH SIDES  
 STA. 825+97 TO STA. 828+47  
 STA. 825+53 TO STA. 828+03



STA. 827+02 TO STA. 831+25  
 STA. 834+61 TO STA. 836+71

STA. 836+71 TO STA. 837+56 WIDENS OUT FOR INTERSECTION WITH IL 143

- 1 EXISTING 9-6-9 PAVEMENT
- 2 EXISTING BITUMINOUS CONCRETE PAVEMENT - 13 3/4"
- 3 EXISTING HOT-MIX ASPHALT OVERLAY - VARIES
- 4 EXISTING LIME MODIFIED SOIL - 12"
- 5 EXISTING STRIP REFLECTIVE CRACK CONTROL
- 6 EXISTING BASE COURSE WIDENING - 8"
- 7 EXISTING CONCRETE GUTTER, TYPE B
- 8 EXISTING SUB-BASE GRANULAR MATERIAL
- 9 EXISTING HOT-MIX ASPHALT SHOULDERS
- 10 EXISTING AGGREGATE SHOULDERS
- 11 EXISTING STEEL PLATE BEAM GUARDRAIL
- 12 EXISTING HOT-MIX ASPHALT BASE COURSE (WIDENING), 8"

- A PROPOSED MICRO-SURFACING, SINGLE PASS
- B PROPOSED BITUMINOUS MATERIAL (TACK COAT)

STATE OF ILLINOIS  
 DEPARTMENT OF TRANSPORTATION

TYPICAL SECTIONS

F.A.P. RTE.	SECTION	COUNTY	TOTAL SHEETS	SHEET NO.
604	(103.125)RS-3	MADISON	9	6
CONTRACT NO. 76N71				
		ILLINOIS	FED. AID PROJECT	

SCALE: SHEET 2 OF 2 SHEETS STA. TO STA.

MODEL: Default  
 FILE: Model: pic\uplanroom.dwg\illinois.gov\pww\DOT\Documents\DOT\_Offices\Dir\trct\_8\Projects\0876N71\CADD\DATA\CAD\pieces\0876N71-shc\typical.dgn

PAVEMENT MARKING SCHEDULE																	
					THERMOPLASTIC PAVEMENT MARKING / TEMPORARY PAVEMENT MARKING								TEMPORARY PAVEMENT MARKING REMOVAL	PAVEMENT MARKING REMOVAL GRINDING	SHORT TERM PAVEMENT MARKING		
					LETTERS & SYMBOLS	LINE 8" WHITE	LINE 12" WHITE	LINE 24" WHITE	LINE 4" SKIP DASH YELLOW	LINE 4" SOLID YELLOW	LINE 4" DOUBLE YELLOW	LINE 4" WHITE EDGE LINE			SHORT TERM PAVEMENT MARKING	SHORT TERM PAVEMENT MARKING REMOVAL	
					SO FT	FOOT	FOOT	FOOT	FOOT	FOOT	FOOT	FOOT			FOOT	SO FT	
STA.	526+57	TO	STA.	542+82	BOTH PASSING					406.3			3250.0	1218.8	1218.8	288	32
STA.	542+82	TO	STA.	549+65	SB GORE AREA/LEFT TURN LANE	83.2		134.5	54.0			2260.0	1582.0	1606.4	1606.4	192	21
STA.	549+65	TO	STA.	550+01	IL 140 - NO MARKING												
STA.	550+01	TO	STA.	556+54	NB GORE AREA/LEFT TURN LANE	83.2		128.3	54.0			2200.0	1489.0	1549.2	1549.2	180	20
STA.	556+54	TO	STA.	561+85	NO PASSING NORTH BOUND					132.8	531.0		1062.0	575.3	575.3	144	16
STA.	561+85	TO	STA.	568+42	BOTH PASSING					164.3			1313.4	492.6	492.6	180	20
STA.	568+42	TO	STA.	576+67	STATION EQUATION												
STA.	576+67	TO	STA.	610+32	BOTH PASSING					841.3			6729.4	2523.6	2523.6	924	103
STA.	610+32	TO	STA.	617+12	NO PASSING SOUTH BOUND					170.0	680.0		1360.0	736.7	736.7	192	21
STA.	617+12	TO	STA.	621+02	BOTH PASSING					97.5			780.0	292.5	292.5	108	12
STA.	621+02	TO	STA.	623+07	NO PASSING NORTH BOUND					51.3	205.0		410.0	222.1	222.1	60	7
STA.	623+07	TO	STA.	627+33	NO PASSING BOTH							852.0	852.0	568.0	568.0	120	13
STA.	627+33	TO	STA.	633+12	NO PASSING SOUTH BOUND					144.8	579.0		1158.0	627.3	627.3	156	17
STA.	633+12	TO	STA.	652+28	NO PASSING BOTH							3832.0	3832.0	2554.7	2554.7	528	59
STA.	652+28	TO	STA.	660+78	NO PASSING NORTH BOUND					212.5	850.0		1700.0	920.8	920.8	228	25
STA.	660+78	TO	STA.	675+91	BOTH PASSING					378.3			3026.0	1134.8	1134.8	408	45
STA.	675+91	TO	STA.	687+95	NO PASSING SOUTH BOUND					301.0	1203.5		2407.0	1303.8	1303.8	312	35
STA.	687+95	TO	STA.	690+37	BRIDGE OMISSION												
STA.	690+37	TO	STA.	703+17	NO PASSING NORTH BOUND					320.0	1279.7		2559.4	1386.4	1386.4	348	39
STA.	703+17	TO	STA.	717+00	BOTH PASSING					345.8			2766.0	1037.3	1037.3	372	41
STA.	717+00	TO	STA.	724+87	NO PASSING SOUTH BOUND					196.8	787.0		1574.0	852.6	852.6	216	24
STA.	724+87	TO	STA.	727+76	BOTH PASSING					72.3			578.0	216.8	216.8	84	9
STA.	727+76	TO	STA.	735+36	NO PASSING NORTH BOUND					190.0	760.0		1520.0	823.3	823.3	204	23
STA.	735+36	TO	STA.	739+00	NO PASSING BOTH							728.0	728.0	485.3	485.3	96	11
STA.	739+00	TO	STA.	746+00	NO PASSING SOUTH BOUND					175.0	700.0		1400.0	758.3	758.3	192	21
STA.	746+00	TO	STA.	748+00	NO PASSING BOTH							400.0	400.0	266.7	266.7	60	7
STA.	748+00	TO	STA.	759+25	NO PASSING NORTH BOUND					281.3	1125.0		2250.0	1218.8	1218.8	312	35
STA.	759+25	TO	STA.	781+04	BOTH PASSING					544.8			4358.0	1634.3	1634.3	600	67
STA.	781+04	TO	STA.	792+33	NO PASSING SOUTH BOUND					282.3	1129.0		2258.0	1223.1	1223.1	312	35
STA.	792+33	TO	STA.	802+80	NO PASSING BOTH							2094.0	2094.0	1396.0	1396.0	288	32
STA.	802+80	TO	STA.	813+77	NO PASSING NORTH BOUND					274.3	1097.0		2194.0	1188.4	1188.4	300	33
STA.	813+77	TO	STA.	824+03	BOTH PASSING					256.5			2052.0	769.5	769.5	276	31
STA.	824+03	TO	STA.	829+06	NO PASSING SOUTH BOUND					125.8	503.0		1006.0	544.9	544.9	132	15
STA.	829+06	TO	STA.	837+56	NO PASSING BOTH AND GORE AREAS		150.0	70.0	48.0			1700.0	1700.0	1299.3	1299.3	216	24
SUB-TOTAL						166.4	150	332.8	156	5964.25	11429.20	14066.00	60388.20	31427.1	31427.08	8028	892
TOTAL						166	150	333	156	5964	11429	14066	60388	31427	31427	8028	892
GRAND TOTAL						166	150	333	156	91,847			31,427	31,427	8,028	892	

MODEL: Default  
FILE: \\hpc\planner\room.d\illinois.gov\PIWDOT\Documents\DOT\_Offices\Illin\DOT - Projects\076N71\CADD\DATA\CAD\Inches\076N71-shc-schedule.dgn

USER NAME = challandeske	DESIGNED -	REVISED -
	DRAWN -	REVISED -
PLOT SCALE = 100,0000' / in.	CHECKED -	REVISED -
PLOT DATE = 9/22/2020	DATE -	REVISED -

**STATE OF ILLINOIS  
DEPARTMENT OF TRANSPORTATION**

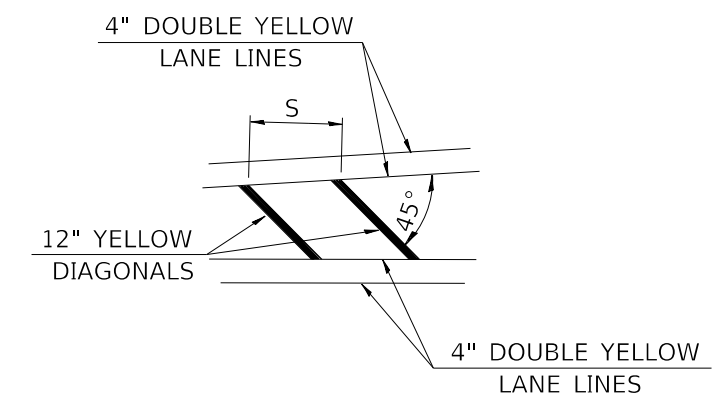
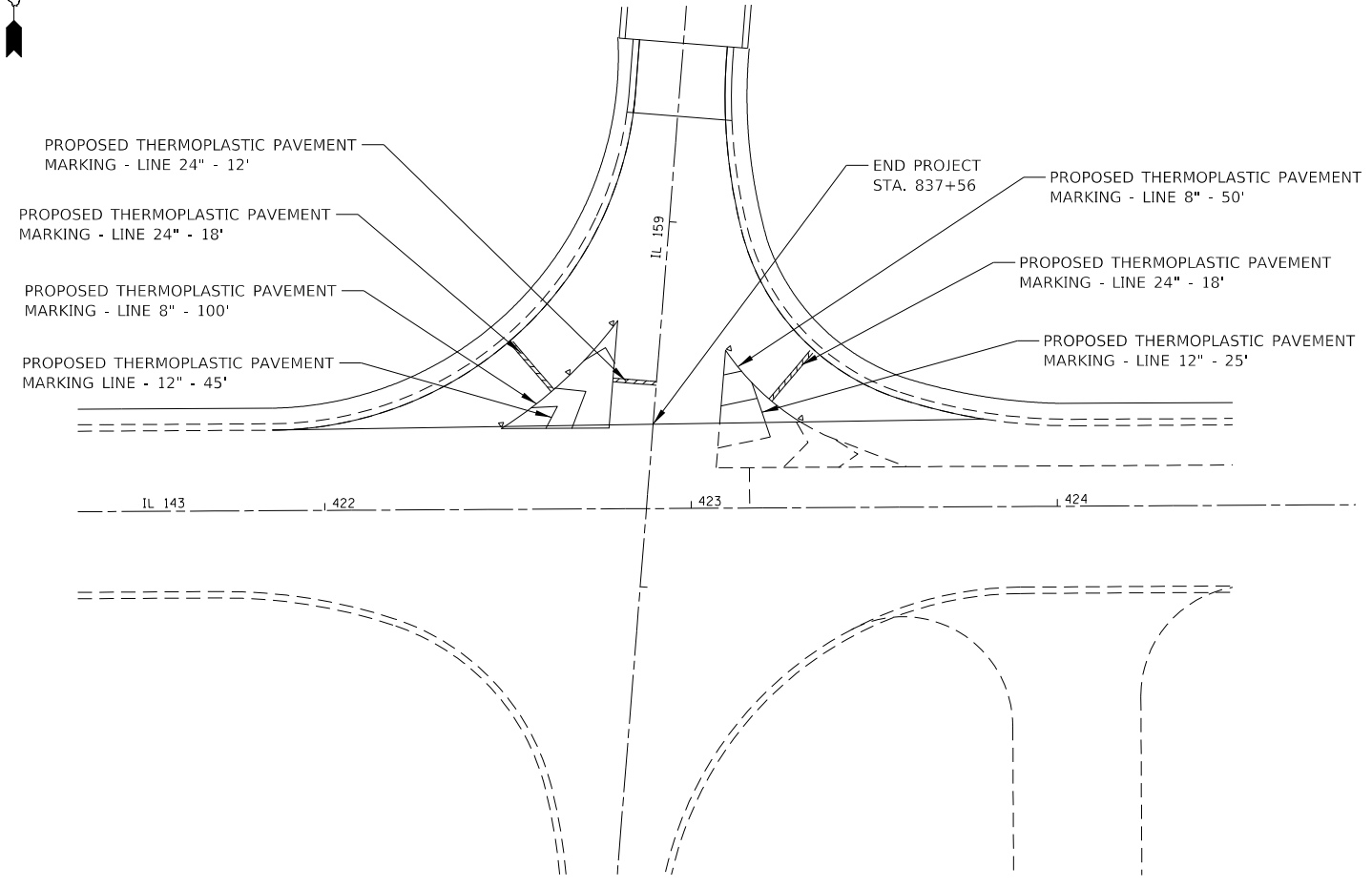
**SCHEDULES OF QUANTITIES**

SCALE: SHEET 1 OF 2 SHEETS STA. TO STA.

F.A.P. RTE.	SECTION	COUNTY	TOTAL SHEETS	SHEET NO.
604	(103,125)RS-3	MADISON	9	7
CONTRACT NO. 76N71				
ILLINOIS FED. AID PROJECT				







TYPICAL APPLICATION FOR MEDIAN STRIPING

SPEED	GORE SPACING (S)
<30 MPH	15'
30-45 MPH	20'
>45 MPH	30'

MODEL: Default  
 FILE: \\nlsr01\p1\planner\room\dat\illinois.gov\PWIDOT\Documents\DOT\_Offices\District 8\Projects\076N71\CADD\ataCAD\pieces\076N71-shc-details.dgn

USER NAME = challeske	DESIGNED -	REVISED -
	DRAWN -	REVISED -
PLOT SCALE = 100.0000' / in.	CHECKED -	REVISED -
PLOT DATE = 9/22/2020	DATE -	REVISED -

**STATE OF ILLINOIS  
DEPARTMENT OF TRANSPORTATION**

<b>DETAILS</b>			
SCALE: NTS	SHEET	OF SHEETS	STA. TO STA.

F.A.P. RTE.	SECTION	COUNTY	TOTAL SHEETS	SHEET NO.
604	(103.125)RS-3	MADISON	9	9
CONTRACT NO. 76N71			ILLINOIS FED. AID PROJECT	