

STATE OF ILLINOIS  
DEPARTMENT OF TRANSPORTATION

F.A.P. RTE.	SECTION	COUNTY	TOTAL SHEETS	SHEET NO.
42	(110,111,112,113)CJS-1	CLINTON	7	1
		ILLINOIS	CONTRACT NO. 76N78	

FOR INDEX OF SHEETS, SEE SHEET NO. 2

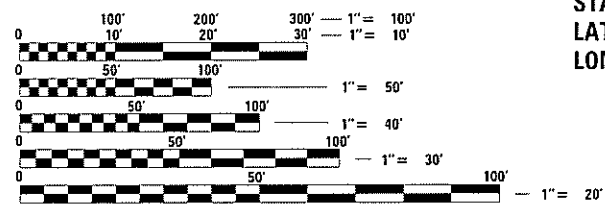
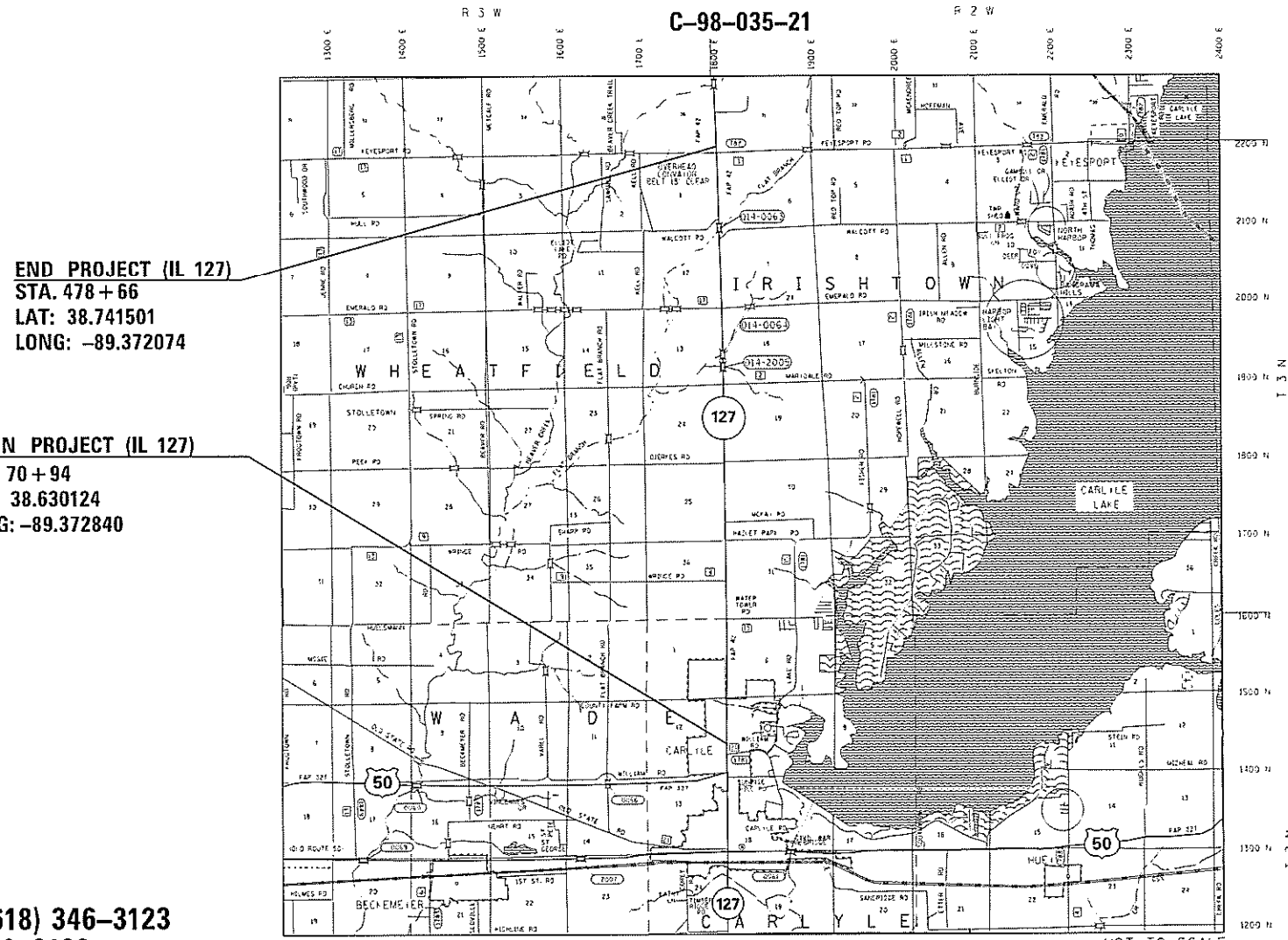
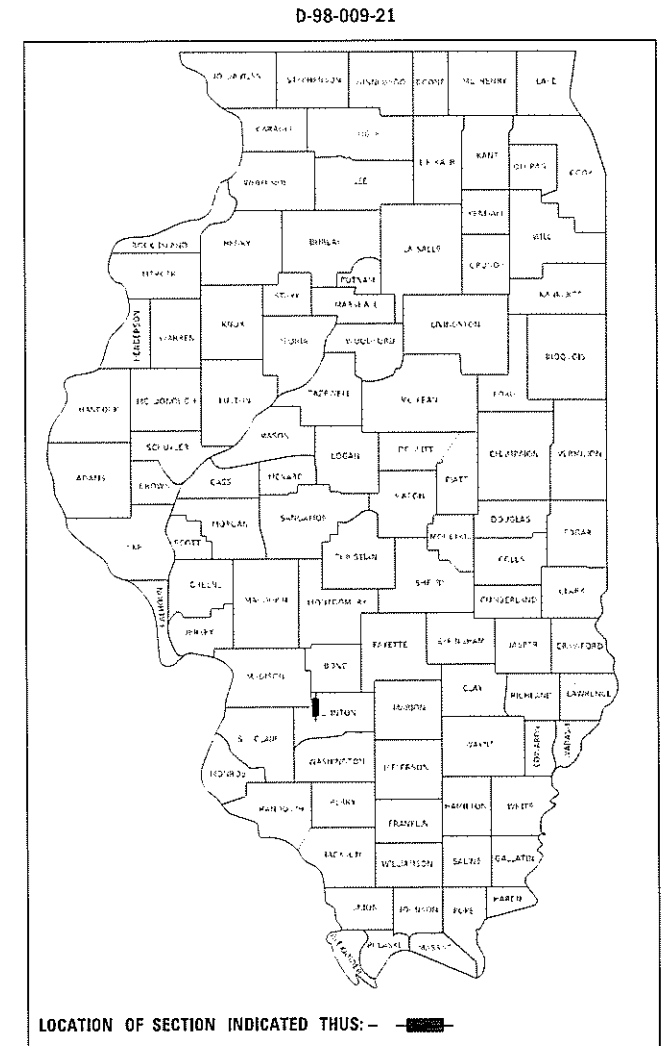
ADT

IL-127 FROM 0.2 MI NORTH OF WILLIAMS RD.  
TO HAZLET STATE PARK RD.  
2019 ADT = 5050 (ACTUAL)  
2020 ADT = 5100 (ESTIMATED)  
2040 ADT = 6000 (ESTIMATED)  
SU = 5.4% MU = 7.4%

IL-127 FROM HAZLET STATE PARK RD. TO BOND CO LINE  
2019 ADT = 3700 (ACTUAL)  
2020 ADT = 3750 (ESTIMATED)  
2040 ADT = 4400 (ESTIMATED)  
SU = 4.1% MU = 9.5%

**PROPOSED  
HIGHWAY PLANS**

FAP ROUTE 42 (IL-127)  
SECTION (110,111,112,113)CJS-1  
PROJECT STP-MWNC(759)  
CRACK AND JOINT SEAL  
CLINTON COUNTY



FULL SIZE PLANS HAVE BEEN PREPARED USING STANDARD ENGINEERING SCALES. REDUCED SIZED PLANS WILL NOT CONFORM TO STANDARD SCALES. IN MAKING MEASUREMENTS ON REDUCED PLANS, THE ABOVE SCALES MAY BE USED.

J.U.L.I.E.  
JOINT UTILITY LOCATION INFORMATION FOR EXCAVATORS  
1-800-892-0123  
OR 811

PROJECT ENGINEER: CHERYL KEPLAR (618) 346-3123  
SQUAD CONTACT: TONI MANN (618) 346-3189

CONTRACT NO. 76N78

GROSS LENGTH = 40367.00 FT. = 7.645 MILES BRIDGE AND CULVERT OMISSIONS  
NET LENGTH = 41215.00 FT. = 7.806 MILES

STATE OF ILLINOIS  
DEPARTMENT OF TRANSPORTATION

SUBMITTED *Dec 8 2020*  
*Kaith Roberts*  
REGIONAL ENGINEER

January 29, 2021  
*Scott A. Etk*  
ENGINEER OF DESIGN AND ENVIRONMENT

January 29, 2021  
*James J. ...*  
DIRECTOR OF HIGHWAYS PROJECT IMPLEMENTATION

PRINTED BY THE AUTHORITY  
OF THE STATE OF ILLINOIS

**INDEX OF SHEETS**

- 1 COVER SHEET
- 2 INDEX OF SHEETS, HIGHWAY STANDARDS,  
GENERAL NOTES & COMMITMENTS
- 3 SUMMARY OF QUANTITIES
- 4-5 TYPICAL SECTION
- 6 SCHEDULES
- 7 CRACK & JOINT SEALING DETAIL

**HIGHWAY STANDARDS**

- 000001-08 STANDARD SYMBOLS, ABBREVIATIONS, AND PATTERNS
- 001006 DECIMAL OF AN INCH AND OF A FOOT
- 701306-04 LANE CLOSURE, 2L, 2W, SLOW MOVING OPERATIONS DAY ONLY, FOR SPEEDS ≥ 45 MPH
- 701901-08 TRAFFIC CONTROL DEVICES

**GENERAL NOTES**

- 1. ILLINOIS STATE LAW REQUIRES A 48-HOUR NOTICE TO BE GIVEN TO UTILITIES BEFORE DIGGING. FIELD MARKING OF FACILITIES MAY BE OBTAINED BY CONTACTING J.U.L.I.E. (1-800-892-0123 OR 811) OR FOR NON-MEMBERS THE UTILITY COMPANY DIRECTLY.
- 2. ANY RAISED REFLECTIVE PAVEMENT MARKERS ENCOUNTERED SHALL BE LEFT IN PLACE. ROUTING SHALL BE GAPPED WHERE RAISED REFLECTIVE PAVEMENT MARKERS ARE ENCOUNTERED SO AS TO LEAVE THEM FUNCTIONAL.
- 3. RESIDENT ENGINEER SHALL DETERMINE EXACT LOCATION WHERE CRACKS ARE TO BE ROUTED AND FILLED.
- 4. ESTIMATED CRACK FILLING APPLICATION RATE : 0.4 LB/FT
- 6. NO SURVEY WAS PERFORMED FOR THIS PROJECT AND THE PLANS WERE CREATED USING MICROFILM AND FIELD MEASUREMENTS.
- 7. TWO CHANGEABLE MESSAGE BOARDS SHALL BE REQUIRED FOR THIS PROJECT. BOTH SHALL BE PLACED TWO WEEKS PRIOR TO ANY LANE CLOSURE, ONE ON EACH END OF THE PROJECT. ONE SHALL REMAIN FOR THE DURATION OF THE CONTRACT AND PLACED AT THE DIRECTION OF THE ENGINEER.

**COMMITMENTS**  
NONE

REV. - MS

MODEL: Default  
 FILE: Main1: P:\uplanroom.dwg  
 ILLINOIS.gov:PWIDOT\Documents\DOT\_Offices\District\_8\Projects\0876N78\CADD\Drawings\0876N78-shc-gen-note.dgn

USER NAME = lewiska	DESIGNED -	REVISED -
	DRAWN -	REVISED -
PLOT SCALE = 100.0000' / 1in.	CHECKED -	REVISED -
PLOT DATE = 12/7/2020	DATE -	REVISED -

**STATE OF ILLINOIS  
DEPARTMENT OF TRANSPORTATION**

**INDEX OF SHEETS, HIGHWAY STANDARDS,  
GENERAL NOTES & COMMITMENTS**

SCALE: NTS    SHEET NO. OF SHEETS    STA. TO STA.

F.A.P. RTE.	SECTION	COUNTY	TOTAL SHEETS	SHEET NO.
42	(110,111,112,113)CJS-1	CLINTON	7	2
CONTRACT 76N78				
FED. ROAD DIST. NO.    ILLINOIS FED. AID PROJECT				

MODEL: Default  
 FILE: \\nrcs1-pc1\pub\lansom.dwg  
 ILLINOIS.GOV:PWIDOT\Documents\DOT\_Offices\District 8\Projects\076N78\CADD\DATA\CAD\Items\076N78-sh-500.dgn

CODE NO.	ITEM	UNIT	TOTAL QUANTITY	CONSTR. CODE
				CLINTON 80% FED 20% ST. ROADWAY 0005 RURAL
45100100	CRACK ROUTING (PAVEMENT)	FOOT	258342	258342
45100200	CRACK FILLING	POUND	92326	92326
67100100	MOBILIZATION	L SUM	1	1
70100460	TRAFFIC CONTROL AND PROTECTION, STANDARD 701306	L SUM	1	1
∅ Z0076600	TRAINEES	HOUR	500	500
70107025	CHANGEABLE MESSAGE SIGN	CAL DA	213	213
∅ Z0076604	TRAINEES TRAINING PROGRAM GRADUATE	HOUR	500	500
* 78000200	THERMOPLASTIC PAVEMENT MARKING - LINE 4"	FOOT	97225	97225

∅

∅

\*

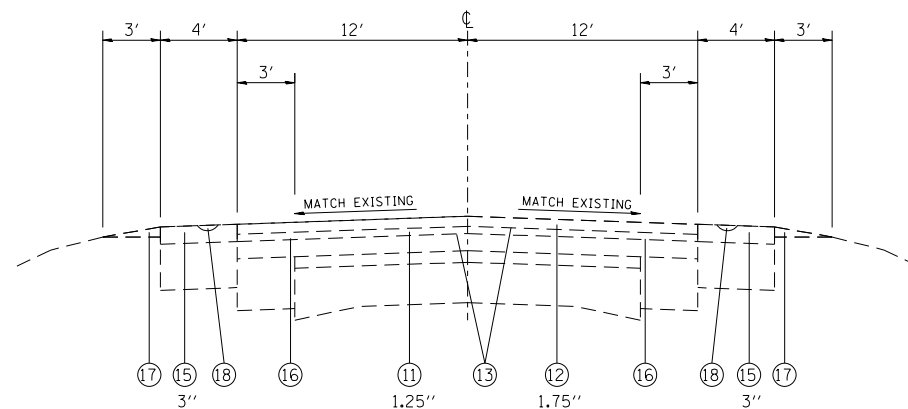
\* SPECIALTY ITEM

∅ 0042

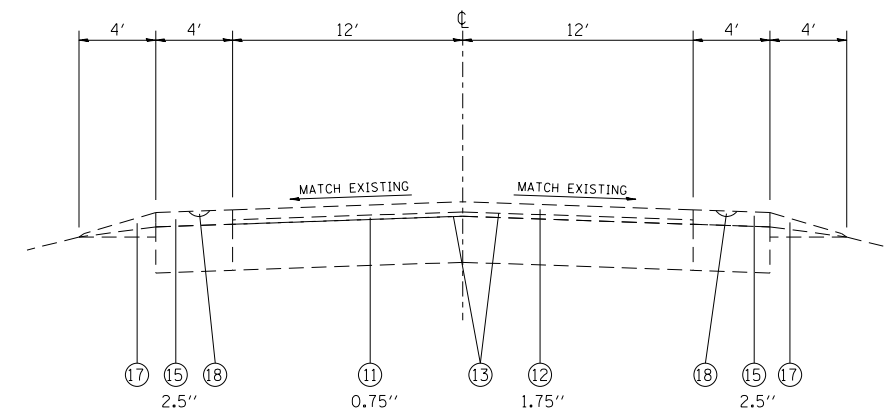
REV. - MS

USER NAME = lewiska	DESIGNED -	REVISED -	<b>STATE OF ILLINOIS DEPARTMENT OF TRANSPORTATION</b>	<b>SUMMARY OF QUANTITIES</b>				F.A.P. RTE.	SECTION	COUNTY	TOTAL SHEETS	SHEET NO.
DRAWN -	REVISIED -	42						(110,111,112,113)CJ5-1	CLINTON	7	3	
PLOT SCALE = 100.0000' / in.	CHECKED -	REVISIED -		CONTRACT NO. 76N78				ILLINOIS FED. AID PROJECT				
PLOT DATE = 12/7/2020	DATE -	REVISIED -		SCALE:	SHEET	OF	SHEETS	STA.	TO	STA.		



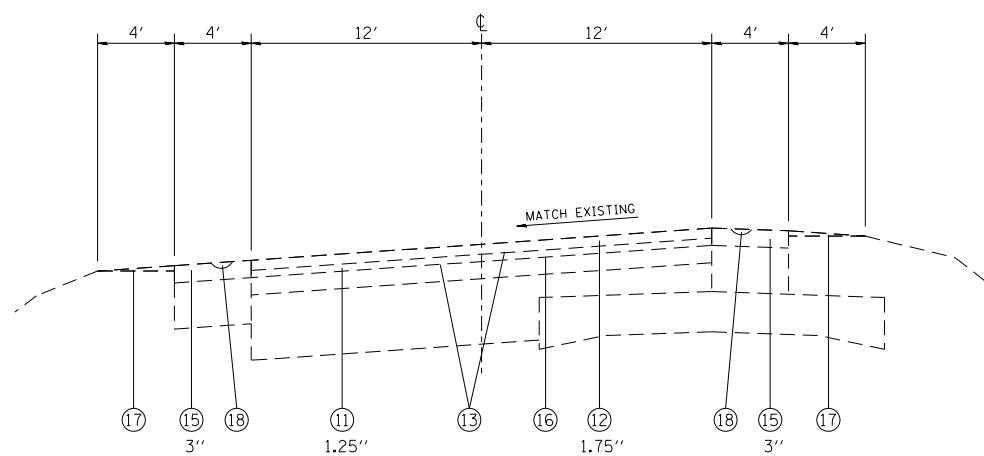


EXISTING TANGENT SECTION  
STA. 440+08 TO STA. 446+64

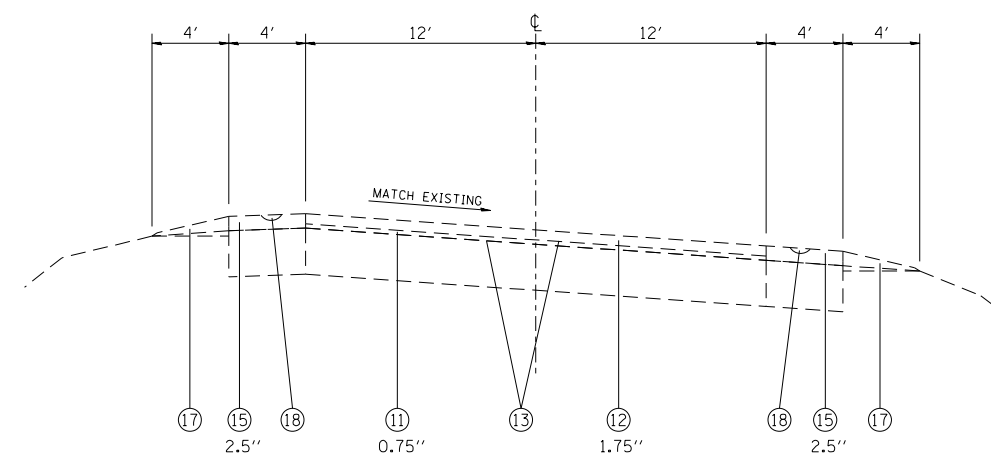


EXISTING TANGENT SECTION  
STA. 329+53 TO STA. 348+69  
STA. 413+92 TO STA. 440+08  
STA. 466+32 TO STA. 478+66

BRIDGE OMISSIONS  
STA. 336+67 TO STA. 338+18  
STA. 423+90 TO STA. 426+28



EXISTING TANGENT SECTION  
STA. 446+64 TO STA. 457+08



EXISTING TANGENT SECTION  
STA. 457+08 TO STA. 466+32

**LEGEND**

- ① EXISTING PCC PAVEMENT, 9-7-9
- ② EXISTING PCC PAVEMENT, 8"
- ③ EXISTING BITUMINOUS SURFACE, 2"
- ④ EXISTING BITUMINOUS RESURFACING, 6"
- ⑤ EXISTING BITUMINOUS WIDENING, 9"
- ⑥ EXISTING BITUMINOUS SHOULDER, 8"
- ⑦ EXISTING BITUMINOUS SHOULDER, 11"
- ⑧ EXISTING AGGREGATE SHOULDER
- ⑨ EXISTING CRPCC PAVEMENT, 8"
- ⑩ EXISTING CRPCC SHOULDER, 8"
- ⑪ EXISTING LEVELING BINDER (MACHINE METHOD), IL-9.5FG, N90
- ⑫ EXISTING HMA SURFACE COURSE, MIX "D", N90, IL 9.5
- ⑬ EXISTING BITUMINOUS MATERIAL PRIME COAT
- ⑭ EXISTING HMA SHOULDERS, 8"
- ⑮ EXISTING HMA SHOULDERS
- ⑯ EXISTING STRIP REFLECTIVE CRACK CONTROL TREATMENT
- ⑰ EXISTING AGGREGATE WEDGE SHOULDER, TYPE B
- ⑱ EXISTING AGGREGATE SHOULDER
- ⑲ EXISTING SHOULDER RUMBLE STRIP, 8"

MODEL: Default  
 FILE: Model: P:\pub\planroom.dwg  
 PROJECT: 076N78\076N78\CADD\DATA\CAD\Sheet: 076N78-511.ctb  
 PLOT DATE: 12/7/2020

USER NAME = lewiska	DESIGNED -	REVISED -
	DRAWN -	REVISED -
PLOT SCALE = 100.0000' / in.	CHECKED -	REVISED -
PLOT DATE = 12/7/2020	DATE -	REVISED -

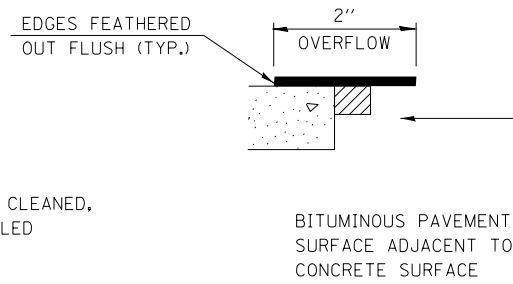
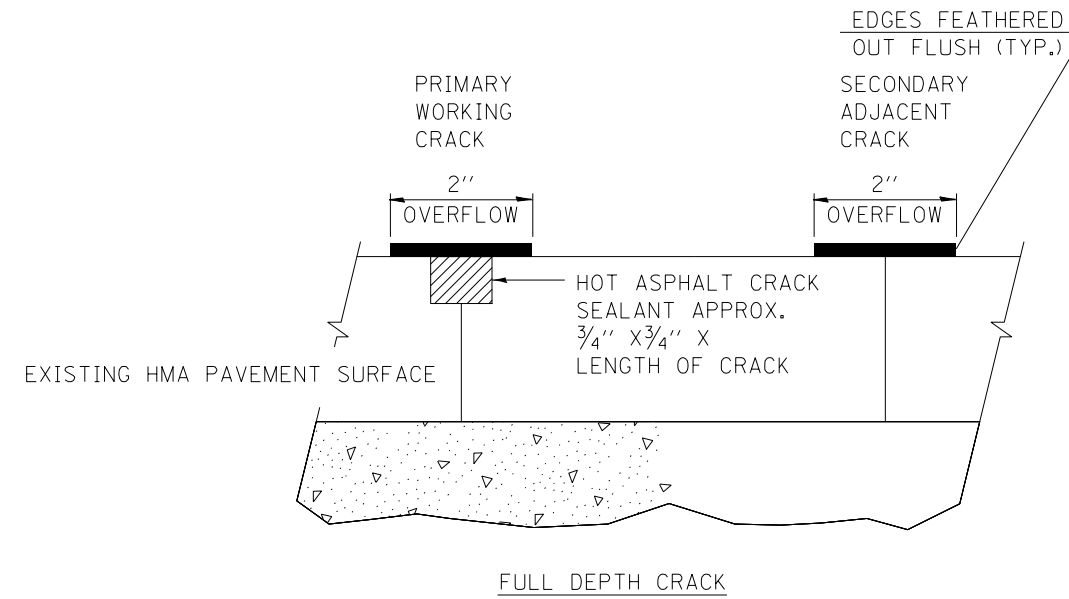
**STATE OF ILLINOIS  
DEPARTMENT OF TRANSPORTATION**

**EXISTING TYPICALS (IL 127)**

SCALE: SHEET OF SHEETS STA. TO STA.

F.A.P. RTE.	SECTION	COUNTY	TOTAL SHEETS	SHEET NO.
42	(110,111,112,113)CJ5-1	CLINTON	7	5
CONTRACT NO. 76N78				
ILLINOIS		FED. AID PROJECT		





**CRACK & JOINT SEALING DETAILS**

MODEL: Default  
 FILE: \\nrcs-pix\pub\room.dat\illinois.gov\PWIDOT\Documents\DOT\_Offices\District 8\Projects\076N78\CADD\ataCAD\pieces\076N78-sh-detail.dgn

USER NAME = lewiska	DESIGNED -	REVISED -
	DRAWN -	REVISED -
PLOT SCALE = 100,0000 ' / in.	CHECKED -	REVISED -
PLOT DATE = 12/7/2020	DATE -	REVISED -

**STATE OF ILLINOIS**  
**DEPARTMENT OF TRANSPORTATION**

**CRACK & JOINT SEALING DETAIL**

SCALE:      SHEET      OF      SHEETS      STA.      TO      STA.

F.A.P. RTE.	SECTION	COUNTY	TOTAL SHEETS	SHEET NO.
42	(110,111,112,113)CJ5-1	CLINTON	24	24
CONTRACT NO. 76N78				
ILLINOIS		FED. AID PROJECT		