

STATE OF ILLINOIS  
DEPARTMENT OF TRANSPORTATION

FAI RTE	SECTION	COUNTY	TOTAL SHEETS	SHEET NO.
57	D9 Weed Spray 2021-2	VARIOUS	10	1
		ILLINOIS	CONTRACT NO. 78859	

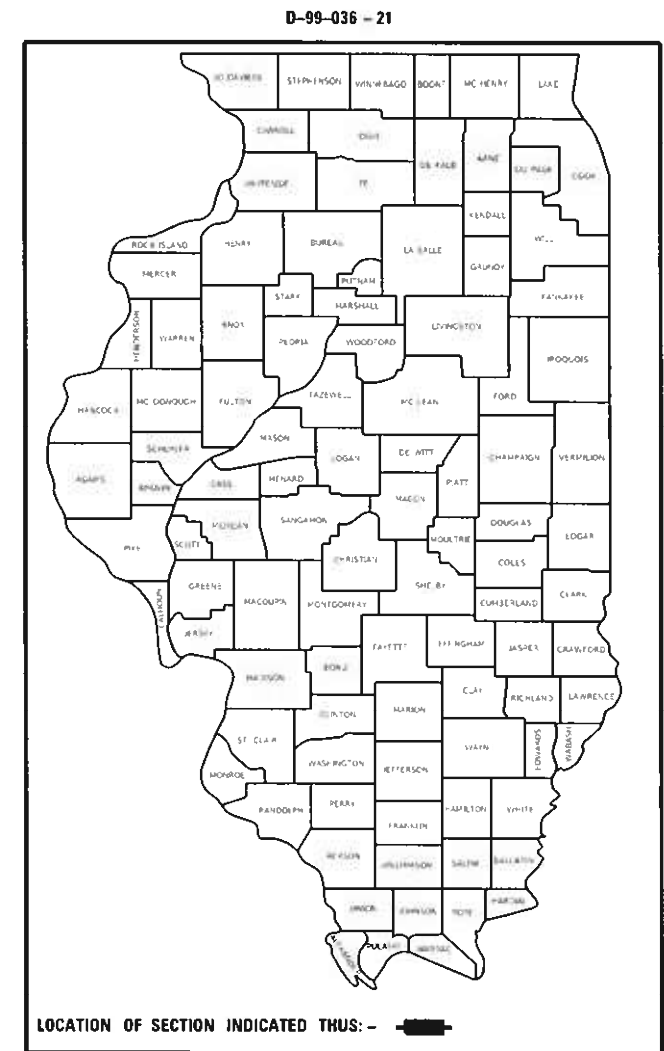
FOR INDEX OF SHEETS, SEE SHEET NO. 3  
FOR SUMMARY OF QUANTITIES, SEE SHEET NO. 4  
FOR STRUCTURAL PAVEMENT DESIGN INFORMATION, SEE SHEET NO.

**PROPOSED  
HIGHWAY PLANS**

FAI ROUTE 57 (I-57)  
SECTION D9 WEED SPRAY 2021-2

**TRAFFIC DATA**

**WEED SPRAYING  
VARIOUS COUNTIES**



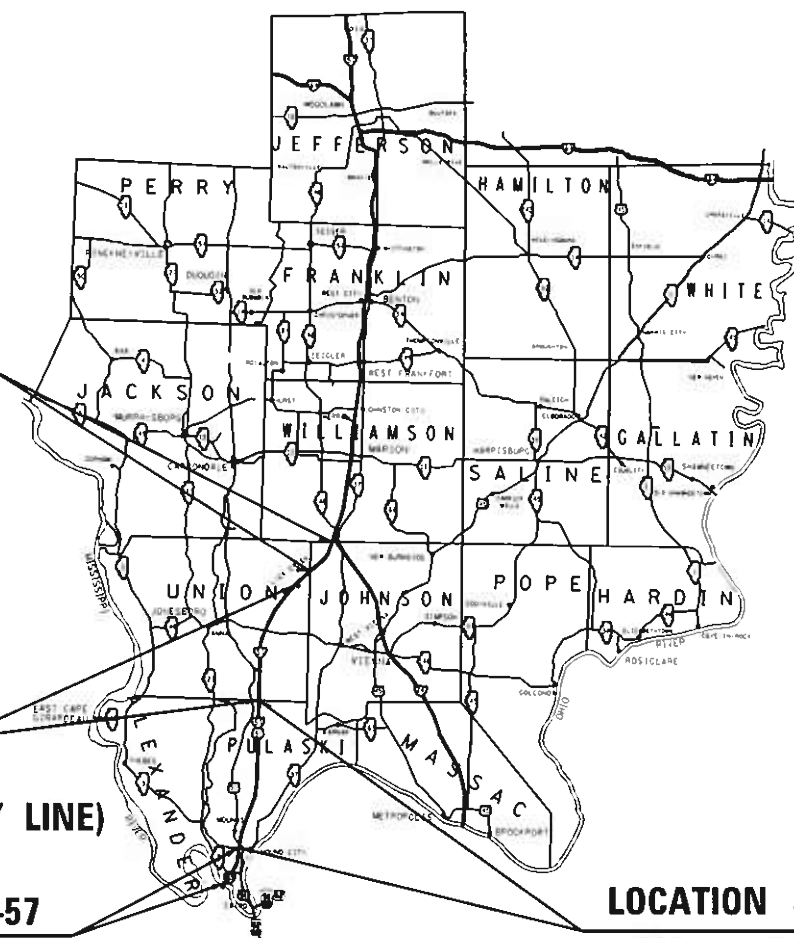
**TOWNSHIPS**

**LOCATION #4 I-57**  
MP 43.3 TO MP 39  
(WILLIAMSON/JOHNSON COUNTY LINE  
TO JOHNSON/UNION COUNTY LINE)

**LOCATION #3 I-57**  
MP 37 TO MP 22  
(UNION/PULASKI COUNTY LINE)

**LOCATION #1 I-57**  
MP 4.3 TO MP 1

**LOCATION #2 I-57**  
MP 22 TO MP 4.3  
(PULASKI/ALEXANDER COUNTY LINE)



DESIGN DESIGNATION : N/A  
COORDINATE SYSTEM : N/A  
POSTED SPEED : 70

J.U.I.E.  
JOINT UTILITY LOCATION INFORMATION FOR EXCAVATION  
1-800-892-0123  
OR 811

PROJECT ENGINEER: VALERIE ROLLA (618)-351-5214  
PROJECT DESIGNER: DARRYL LEFTWICH (618)-351-5291

CONTRACT NO. 78859

GROSS LENGTH = . FT. = . MILES  
NET LENGTH = . FT. = . MILES

STATE OF ILLINOIS  
DEPARTMENT OF TRANSPORTATION

SUBMITTED 12-07-2020  
*KRE*  
REGION FIVE ENGINEER

January 29, 2021  
*Scott A. Elk*  
ENGINEER OF DESIGN AND ENVIRONMENT

January 29, 2021  
*James J. [Signature]*  
DIRECTOR OF HIGHWAYS PROJECT IMPLEMENTATION 13

**PRINTED BY THE AUTHORITY  
OF THE STATE OF ILLINOIS**



# INDEX OF SHEETS

SHEET NO	DESCRIPTION
1	COVER SHEET
2	SIGNATURE SHEET
3	INDEX OF SHEETS, HIGHWAY STANDARDS
4	SUMMARY OF QUANTITIES
5	SCHEDULE OF QUANTITIES
6	SCHEDULE OF ROUTES AND SPRAY MIXTURES
7	ALEXANDER COUNTY LOCATION MAP
8	PULASKI COUNTY LOCATION MAP
9	UNION COUNTY LOCATION MAP
10	JOHNSON COUNTY LOCATION MAP

# HIGHWAY STANDARDS

701101-05 OFF-ROAD OPERATIONS, MULTILANE - LESS THAN 15FT TO EOP  
 701106-02 OFF ROAD OPERATIONS, MULTILANE - MORE THAN 15FT AWAY  
 701426-09 LANE CLOSURE, MULTILANE, INTERMITTANT OR MOVING OPERATION 45 MPH OR MORE  
 701901-08 TRAFFIC CONTROL DEVICES

MODEL: Default  
 FILE: \\nls01c-pub\pubroom\dat\illinois.gov\PI\DOT\Documents\DOT\_Offices\District\_9\Projects\78859\CAAD\BataCAD\Sheets\DS\_78859-Sheets.dgn

USER NAME = leftwichd	DESIGNED -	REVISED -	<b>STATE OF ILLINOIS DEPARTMENT OF TRANSPORTATION</b>	<b>INDEX OF SHEETS HIGHWAY STANDARDS</b>		F.A.I. RTE.	SECTION	COUNTY	TOTAL SHEETS	SHEET NO.	
	DRAWN -	REVISED -		57	D9 Weed Spray 2021-2	VARIOUS	10	3			
PLOT SCALE = 100,0000 ' / in.	CHECKED -	REVISED -		CONTRACT NO. 78859							
PLOT DATE = 12/2/2020	DATE -	REVISED -		SCALE:	SHEET	OF	SHEETS	STA.	TO	STA.	ILLINOIS

## SUMMARY OF QUANTITIES

COUNTY:	FAI 57 (I-57)
ROUTE:	VARIOUS
FUNDING:	100% STATE
LOCATION:	ROADWAY
	RURAL
	0031

CODE NUMBER	ITEM DESCRIPTION	UNIT	QUANTITY
67100100	MOBILIZATION	L SUM	1
X0325681	NON-IONIC SURFACTANT	GALLON	88.0
X0325947	MILESTONE VM	GALLON	53.0
X2000002	VASTLAN	GALLON	211.5

REV. - MS

MODEL: Default  
 FILE: M:\GIS\Projects\GIS\Projects\DOT\Office\District 9\Project\78859\CADD\Sheet\09\_78859-Sheets.dgn

USER NAME = leftwichd PLOT SCALE = 100.0000' / in. PLOT DATE = 11/20/2020	DESIGNED - DRAWN - CHECKED - DATE -	REVISED - REVISED - REVISED + REVISED +	<b>STATE OF ILLINOIS DEPARTMENT OF TRANSPORTATION</b>	<b>SUMMARY OF QUANTITIES</b>  SCALE:      SHEET      OF      SHEETS      STA.      TO      STA.	<table border="1" style="border-collapse: collapse; width: 100%;"> <tr> <th>F.A.I. RTE.</th> <th>SECTION</th> <th>COUNTY</th> <th>TOTAL SHEETS</th> <th>SHEET NO.</th> </tr> <tr> <td>57</td> <td>D9 Weed Spray 2021-2</td> <td>VARIOUS</td> <td>10</td> <td>4</td> </tr> <tr> <td colspan="3" style="text-align: center;">ILLINOIS   FED. AID PROJECT</td> <td colspan="2" style="text-align: center;">CONTRACT NO. 78859</td> </tr> </table>	F.A.I. RTE.	SECTION	COUNTY	TOTAL SHEETS	SHEET NO.	57	D9 Weed Spray 2021-2	VARIOUS	10	4	ILLINOIS   FED. AID PROJECT			CONTRACT NO. 78859	
F.A.I. RTE.	SECTION	COUNTY	TOTAL SHEETS	SHEET NO.																
57	D9 Weed Spray 2021-2	VARIOUS	10	4																
ILLINOIS   FED. AID PROJECT			CONTRACT NO. 78859																	

## SCHEDULE OF QUANTITIES

LOCATION	MARKED ROUTE	COUNTY	ESTIMATED ACRES	MILESTONE VM GALLONS	VASTLAN GALLONS	NON-IONIC SURFACTANT GALLONS
1	FAI 57 NB	ALEXANDER	48.5	2.25	9	3.75
	FAI 57 SB	ALEXANDER	48.5	2.25	9	3.75
2	FAI 57 NB	PULASKI	267.5	12.5	50.25	21
	FAI 57 SB	PULASKI	267.5	12.5	50.25	21
3	FAI 57 NB	UNION	218	10.25	41	17
	FAI 57 SB	UNION	218	10.25	41	17
4	FAI 57 NB	JOHNSON	28.75	1.5	5.5	2.25
	FAI 57 SB	JOHNSON	28.75	1.5	5.5	2.25
			TOTAL	53.0	211.5	88.0

MODEL: Default  
 FILE: \\nrcs-pub\pubroom\dat\illinois\gov\PIWDOT\Documents\DOT\_Offices\District\_9\Projects\78859\CADD\Sheet\09\_78859-Sheets.dgn

USER NAME = leftwichd	DESIGNED -	REVISED -
	DRAWN -	REVISED -
PLOT SCALE = 100.0000' / in.	CHECKED -	REVISED -
PLOT DATE = 11/20/2020	DATE -	REVISED -

**STATE OF ILLINOIS  
DEPARTMENT OF TRANSPORTATION**

**SHCHEDULE OF QUANTITIES**

SCALE: SHEET OF SHEETS STA. TO STA.

F.A.I. RTE.	SECTION	COUNTY	TOTAL SHEETS	SHEET NO.
57	D9 Weed Spray 2021-2	VARIOUS	10	5
CONTRACT NO. 78859				
ILLINOIS		FED. AID PROJECT		

## SCHEDULE OF ROUTES

LOCATION	COUNTY	MARKED ROUTE
1	ALEXANDER	I-57 FROM MP 1 TO MP 4.3 (@ THE ALEXANDER/PULASKI COUNTY LINE)
2	PULASKI	I-57 FROM MP 4.3 (@ THE ALEXANDER/PULASKI COUNTY LINE) TO MP 22 (@ THE PULASKI/UNION COUNTY LINE)
3	UNION	I-57 FROM MP 22 (@ THE PULASKI/UNION COUNTY LINE) TO MP 37 (NORTH OF THE LICK CREEK INTERCHANGE)
4	JOHNSON	I-57 FROM MP 39 (@ THE UNION/JOHNSON COUNTY LINE) TO MP 43.3 (@ THE JOHNSON/WILLIAMSON COUNTY LINE)

## ESTIMATE OF TOTAL MATERIALS FOR SPRAY

MATERIAL	GALLONS
MILESTONE	53.0
VASTLAN	211.5
SURFACTANT	88.0
CLEAN WATER	33.765

## SPRAY MIXTURE

MILESTONE MIXTURE	
MILESTONE	6.0 OZ OF PRODUCT/ACRE
VASTALAN	24 OZ. OF PRODUCT/ACRE
SURFACTANT	10 OZ. OF PRODUCT/ACRE
CLEAN WATER	30 GALLONS/ACRE

MODEL: Default  
 FILE: \\nls01c.pw.state.il.us\pub\rooms\dat\illinois.gov\PW\DOT\Documents\DOT\_Offices\District\_9\Projects\78859\CADD\Sheet\9\_78859-Sheets.dgn

USER NAME = leftwichd	DESIGNED -	REVISED -
	DRAWN -	REVISED -
PLOT SCALE = 100,0000' / in.	CHECKED -	REVISED -
PLOT DATE = 11/20/2020	DATE -	REVISED -

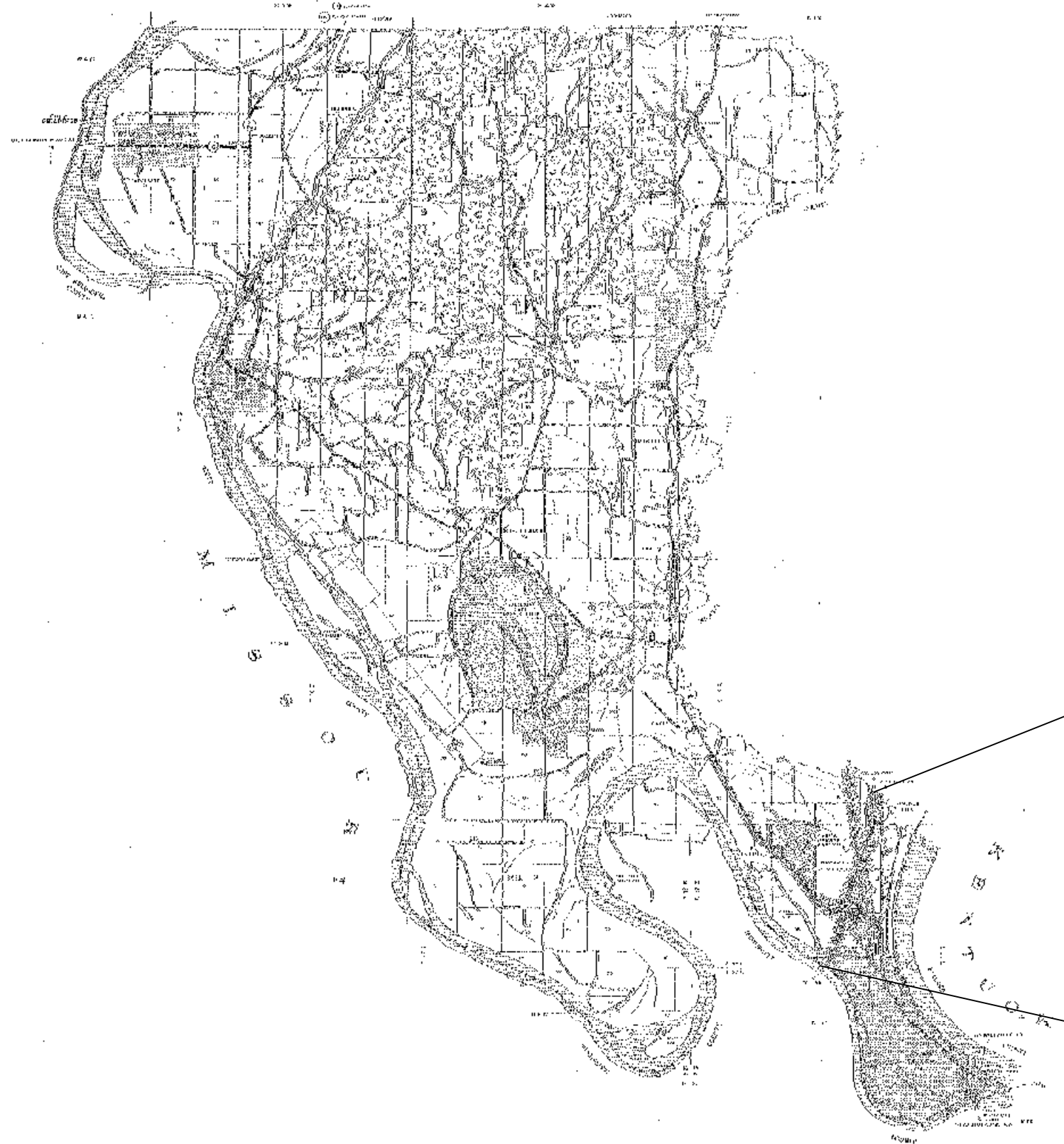
**STATE OF ILLINOIS**  
**DEPARTMENT OF TRANSPORTATION**

**SCHEDULE OF ROUTES**  
**SPRAY MIXTURES**

SCALE: SHEET OF SHEETS STA. TO STA.

F.A.I. RTE.	SECTION	COUNTY	TOTAL SHEETS	SHEET NO.
57	D9 Weed Spray 2021-2	VARIOUS	10	6
CONTRACT NO. 78859				
ILLINOIS FED. AID PROJECT				

# ALEXANDER COUNTY LOCATION MAP



END LOCATION 1: I-57 AT MP 4.3  
ALEXANDER/PULASKI COUNTY LINE

BEGIN LOCATION 1: I-57 AT MP 1

MODEL: Default  
FILE: \\nrcs-pub\pubroom\dat\illinois\pwr\DOT\Documents\DOT\_Offices\District 9\Projects\78859\CADD\Drawings\78859-Sheets.dgn

USER NAME = leftwichtd	DESIGNED -	REVISED -
	DRAWN -	REVISED -
PLOT SCALE = 100,0000' / in.	CHECKED -	REVISED -
PLOT DATE = 11/20/2020	DATE -	REVISED -

STATE OF ILLINOIS  
DEPARTMENT OF TRANSPORTATION

ALEXANDER COUNTY LOCATION MAP

SCALE: SHEET OF SHEETS STA. TO STA.

F.A.I. RTE.	SECTION	COUNTY	TOTAL SHEETS	SHEET NO.
57	D9 Weed Spray 2021-2	VARIOUS	10	7
			CONTRACT NO. 78859	
		ILLINOIS	FED. AID PROJECT	

# PULASKI COUNTY LOCATION MAP

END LOCATION 2: I-57 AT MP 22  
PULASKI/UNION COUNTY LINE



BEGIN LOCATION 2: I-57 AT MP 4.3  
ALEXANDER/PULASKI COUNTY LINE

MODEL: Default  
FILE: \\pulsar.com\data\illinois\pulsar\DOT\Documents\DOT\_Offices\District 9\Projects\78859\CADD\data\CADD\sheet\09\_78859-Sheet.dgn

USER NAME = leftwichtd	DESIGNED -	REVISED -
	DRAWN -	REVISED -
PLOT SCALE = 100,0000 ' / in.	CHECKED -	REVISED -
PLOT DATE = 11/20/2020	DATE -	REVISED -

**STATE OF ILLINOIS  
DEPARTMENT OF TRANSPORTATION**

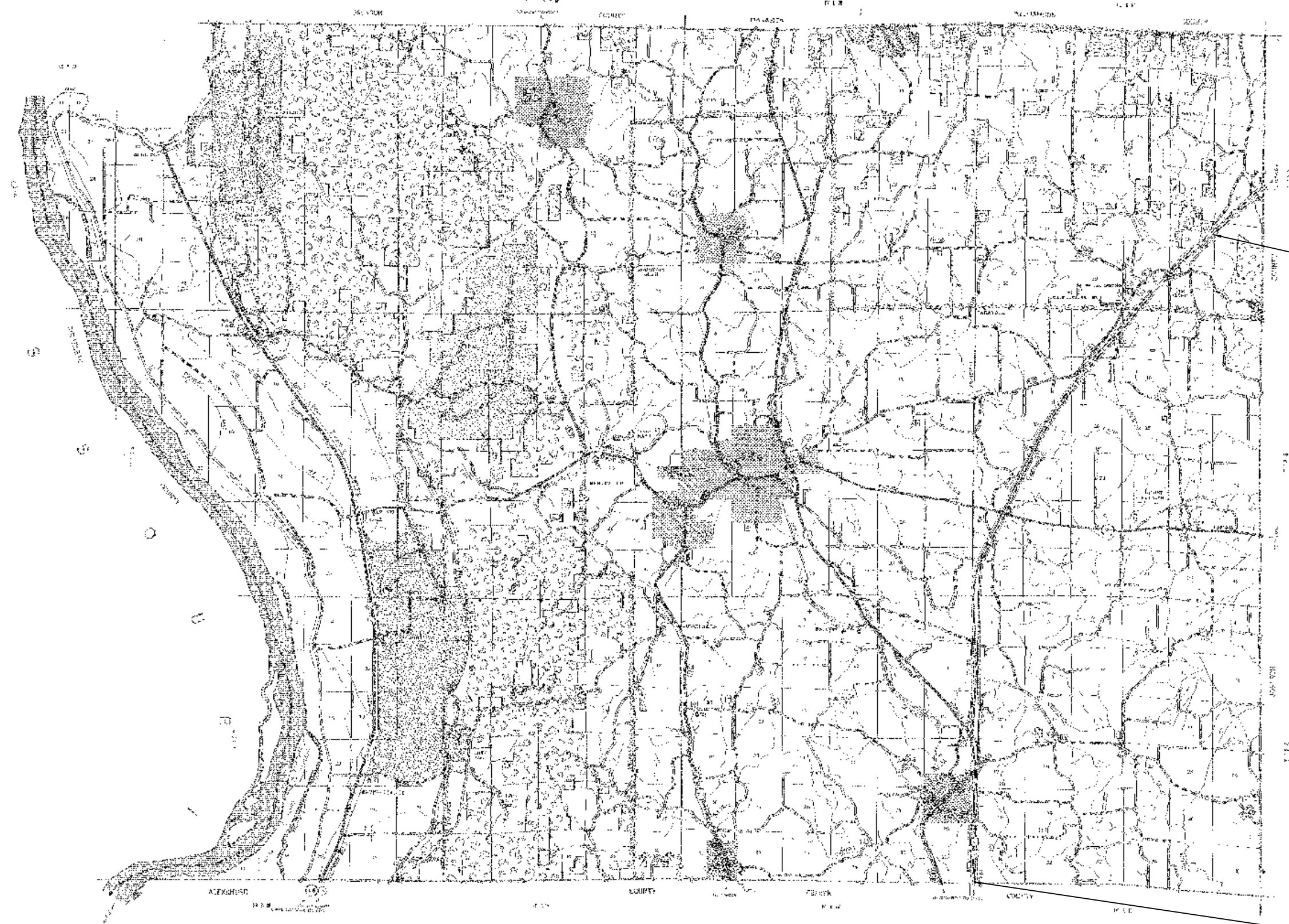
**PULASKI COUNTY LOCATION MAP**

SCALE: SHEET OF SHEETS STA. TO STA.

F.A.I. RTE.	SECTION	COUNTY	TOTAL SHEETS	SHEET NO.
57	D9 Weed Spray 2021-2	VARIOUS	10	8
CONTRACT NO. 78859				
		ILLINOIS	FED. AID PROJECT	



# UNION COUNTY LOCATION MAP



END LOCATION 3: I-57 AT MP 37

BEGIN LOCATION 3: I-57 AT MP 22  
PULASKI/UNION COUNTY LINE

MODEL: Default  
 FILE: \\pulsarroom.dia.illinois.gov\PI\DOT\Documents\DOT\_Offices\District 9\Projects\78859\CADD\Drawings\78859-Sheets.dgn

USER NAME = leftwichd	DESIGNED -	REVISED -
	DRAWN -	REVISED -
PLOT SCALE = 100,000' / in.	CHECKED -	REVISED -
PLOT DATE = 11/20/2020	DATE -	REVISED -

**STATE OF ILLINOIS  
DEPARTMENT OF TRANSPORTATION**

**UNION COUNTY LOCATION MAP**

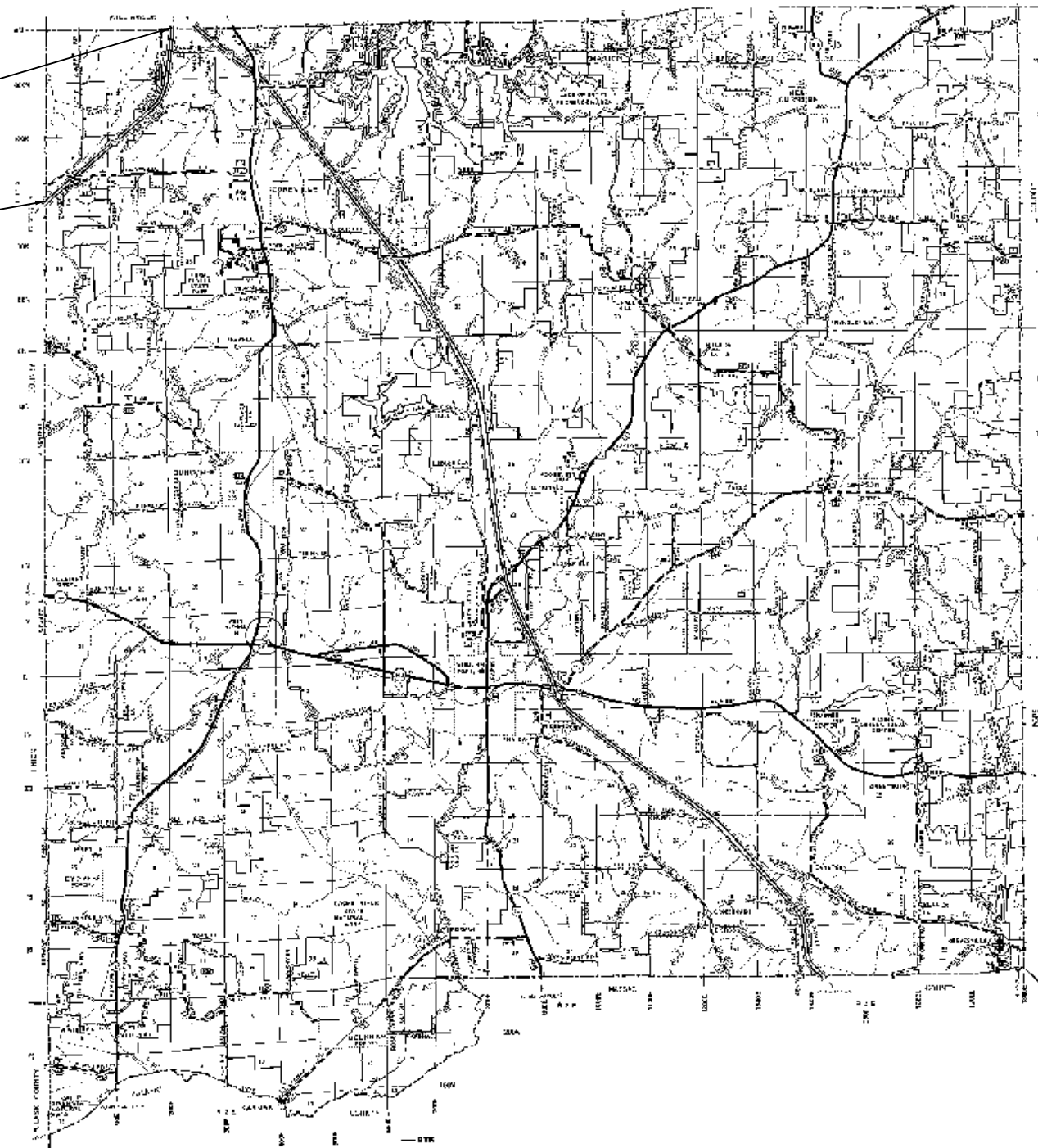
SCALE: SHEET OF SHEETS STA. TO STA.

F.A.I. RTE.	SECTION	COUNTY	TOTAL SHEETS	SHEET NO.
57	D9 Weed Spray 2021-2	VARIOUS	10	9
CONTRACT NO. 78859				
		ILLINOIS	FED. AID PROJECT	

# JOHNSON COUNTY LOCATION MAP

END LOCATION 4: I-57 AT MP 43.3  
JOHNSON/WILLIAMSON COUNTY LINE

BEGIN LOCATION 4: I-57 AT MP 39  
UNION/JOHNSON COUNTY LINE



MODEL: Default  
 FILE: \\nas01c.pw.state.il.us\pub\baronm.d\at\links\gov\PI\DOT\Documents\DOT\_Offices\District 9\Projects\78859\CADD\Drawings\78859-Sheets.dgn

USER NAME = leftwichd	DESIGNED -	REVISED -
	DRAWN -	REVISED -
PLOT SCALE = 100,0000' / in.	CHECKED -	REVISED -
PLOT DATE = 11/20/2020	DATE -	REVISED -

STATE OF ILLINOIS  
DEPARTMENT OF TRANSPORTATION

JOHNSON COUNTY LOCATION MAP

SCALE: SHEET OF SHEETS STA. TO STA.

F.A.I. RTE.	SECTION	COUNTY	TOTAL SHEETS	SHEET NO.
57	D9 Weed Spray 2021-2	VARIOUS	10	10
			CONTRACT NO. 78859	
		ILLINOIS FED. AID PROJECT		