

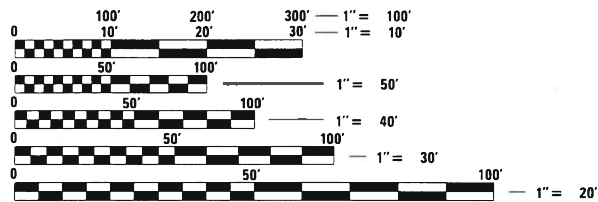
**INDEX OF SHEETS**

- 1 COVER SHEET
- 2 HIGHWAY STANDARDS, GENERAL NOTES, & COMMITMENTS
- 3 SUMMARY OF QUANTITIES
- 4 TYPICAL SECTIONS
- 5 SCHEDULE OF QUANTITIES
- 6 LOCATION MAP & SURVEY MONUMENT

FOR LIST OF HIGHWAY STANDARDS, SEE SHEET NO.2

**TRAFFIC DATA**

2017 ADT (ACTUAL): 350  
 2038 ADT (ESTIMATED): 350  
 SU: 0.8%  
 MU: 0.1%



FULL SIZE PLANS HAVE BEEN PREPARED USING STANDARD ENGINEERING SCALES. REDUCED SIZED PLANS WILL NOT CONFORM TO STANDARD SCALES. IN MAKING MEASUREMENTS ON REDUCED PLANS, THE ABOVE SCALES MAY BE USED.

J.U.L.I.E.  
 JOINT UTILITY LOCATING INFORMATION FOR EXCAVATORS  
 1-800-892-0123  
 OR 811

PROJECT ENGINEER: BILLIE OWEN (618) 346-3209  
 PROJECT MANAGER: PHIL FREIMUTH (618) 346-3194

CONTRACT NO. 76N92

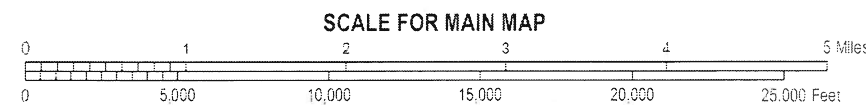
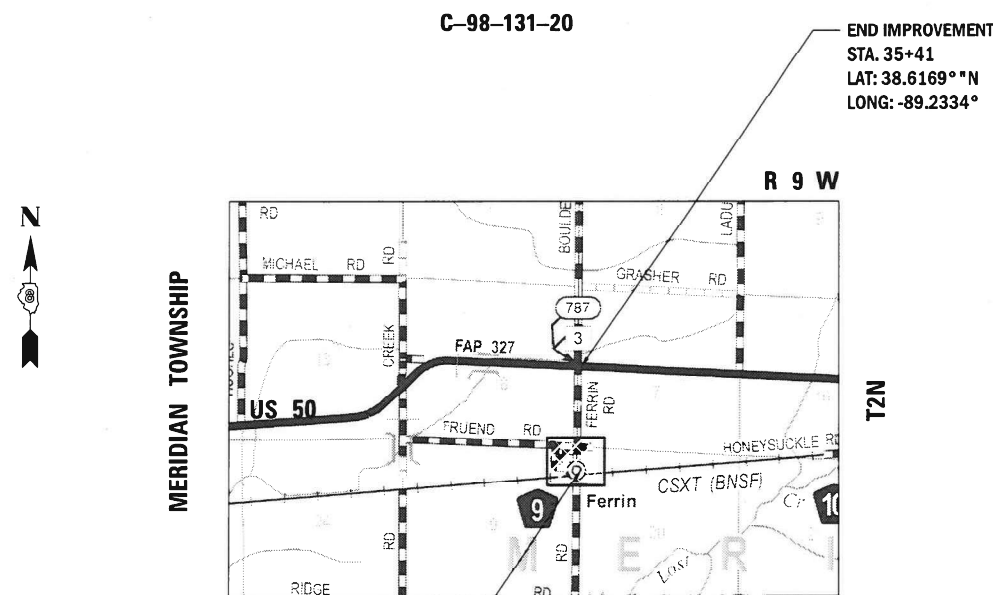
STATE OF ILLINOIS  
 DEPARTMENT OF TRANSPORTATION

**PROPOSED  
 HIGHWAY PLANS**

ROUTE OR 212 (FERRIN RD/CH 3)  
 SECTION 5RS-2

RESURFACING- HALF SMART  
 FROM LOUIS ST. TO US 50  
 CLINTON COUNTY

OR RTE.	SECTION	COUNTY	TOTAL SHEETS	SHEET NO.
212	5RS-2	CLINTON	6	1
		ILLINOIS	CONTRACT NO. 76N92	



GROSS LENGTH = 3537.60 FEET = 0.67 MILES  
 NET LENGTH = 3537.60 FEET = 0.67 MILES

STATE OF ILLINOIS  
 DEPARTMENT OF TRANSPORTATION

SUBMITTED Dec 10 2020  
Keith Roberts  
 REGIONAL ENGINEER

January 29, 2021  
Scott A. Elk  
 ENGINEER OF DESIGN AND ENVIRONMENT

January 29, 2021  
Samuel Gunn  
 DIRECTOR OF HIGHWAYS PROJECT IMPLEMENTATION 13

PRINTED BY THE AUTHORITY  
 OF THE STATE OF ILLINOIS



CODE NO.	ITEM	UNIT	100% STATE		CONSTR. CODE	
			TOTAL QUANTITY	ROADWAY		
				0005	RURAL	
40600290	BITUMINOUS MATERIALS (TACK COAT)	POUND	3187	3187		
40603200	POLYMERIZED HOT-MIX ASPHALT BINDER COURSE, IL-4.75, N50	TON	297	297		
44000152	HOT-MIX ASPHALT SURFACE REMOVAL, 3/4"	SQ YD	7082	7082		
44200050	WELDED WIRE REINFORCEMENT	SQ YD	104	104		
44200168	PAVEMENT PATCHING, TYPE II, 14 INCH	SQ YD	23	23		
44201025	CLASS B PATCHES, TYPE IV, 14 INCH	SQ YD	104	104		
44201297	DOWEL BARS 1"	EACH	23	23		
44213200	SAW CUTS	FOOT	135	135		
48102100	AGGREGATE WEDGE SHOULDER, TYPE B	TON	95	95		
67100100	MOBILIZATION	L SUM	1	1		
70100450	TRAFFIC CONTROL AND PROTECTION, STANDARD 701201	L SUM	1	1		
70100460	TRAFFIC CONTROL AND PROTECTION, STANDARD 701306	L SUM	1	1		
70100600	TRAFFIC CONTROL AND PROTECTION, STANDARD 701336	L SUM	1	1		
70107025	CHANGEABLE MESSAGE SIGN	CAL DA	28	28		

CODE NO.	ITEM	UNIT	100% STATE		CONSTR. CODE	
			TOTAL QUANTITY	ROADWAY		
				0005	RURAL	
70300100	SHORT TERM PAVEMENT MARKING	FOOT	644	644		
70300150	SHORT TERM PAVEMENT MARKING REMOVAL	SQ FT	215	215		
* 78001100	PAINT PAVEMENT MARKING - LETTERS AND SYMBOLS	SQ FT	61	61		
* 78001110	PAINT PAVEMENT MARKING - LINE 4"	FOOT	8200	8200		
* 78001180	PAINT PAVEMENT MARKING - LINE 24"	FOOT	27	27		
X1500003	BITUMINOUS SURFACE TREATMENT, (PREVENTIVE MAINTENANCE), A-1	SQ YD	7082	7082		
X7810400	TEMPORARY RAISED PAVEMENT MARKER	EACH	161	161		
Z0033700	LONGITUDINAL JOINT SEALANT	FOOT	3541	3541		
∅ Z0076604	TRAINEES TRAINING PROGRAM GRADUATE	HOUR	500	500		
Z0070100	SURVEY MONUMENT COVER ASSEMBLY	EACH	1	1		

\* SPECIALTY ITEM

∅ 0042

REV. - MS

MODEL: Default  
FILE: \\nrcs-pk1\pub\room\dat\illinois.gov\PWIDOT\Documents\DOT\_Offices\Dir\ctc @ Projects\076992\CADD\DATA\CAD\Sheet\076992-shc-cover.dgn

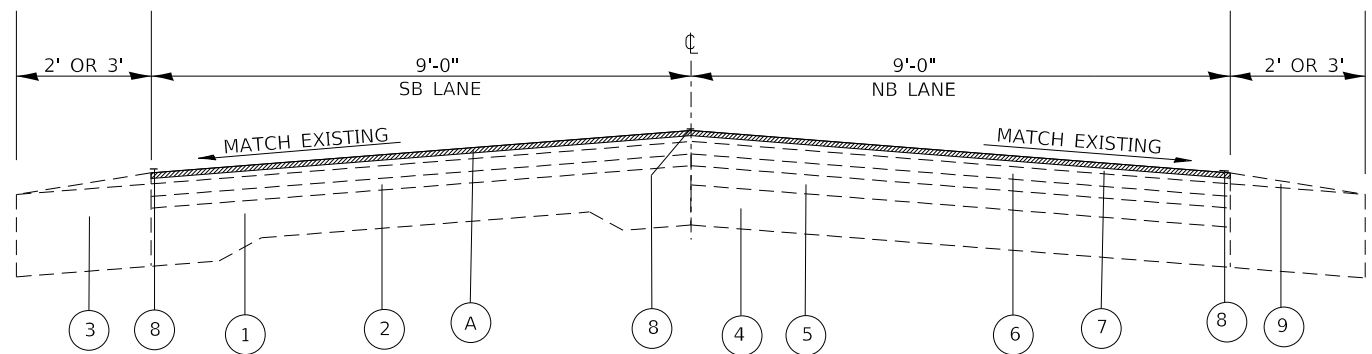
USER NAME = Simam	DESIGNED -	REVISED -
	DRAWN -	REVISED -
PLOT SCALE = 100.0000 ' / in.	CHECKED -	REVISED -
PLOT DATE = 12/7/2020	DATE -	REVISED -

STATE OF ILLINOIS  
DEPARTMENT OF TRANSPORTATION

SUMMARY OF QUANTITIES

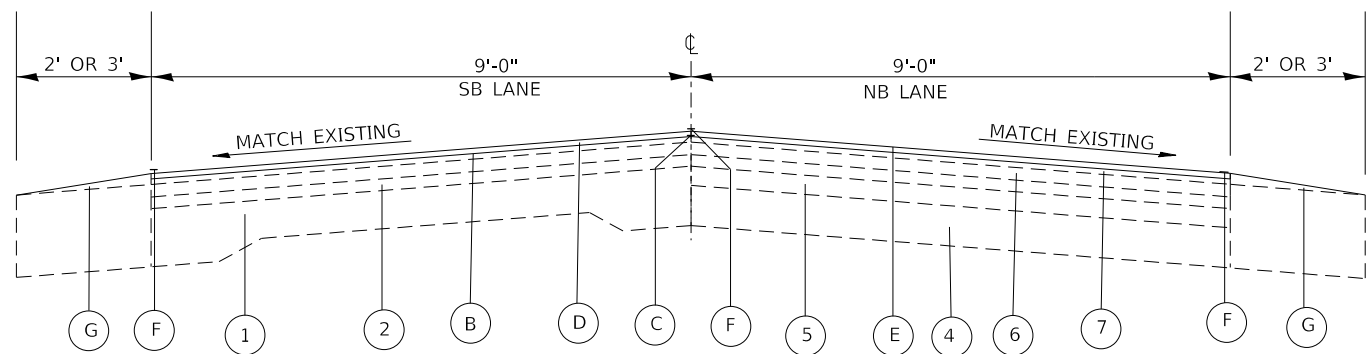
SCALE: SHEET 1 OF 2 SHEETS STA. TO STA.

OR RTE.	SECTION	COUNTY	TOTAL SHEETS	SHEET NO.
212	5RS-2	CLINTON	6	3
			CONTRACT NO. 76N92	
		ILLINOIS	FED. AID PROJECT	



**EXISTING TYPICAL SECTION**

STA 0+00 TO STA 35+41



**PROPOSED TYPICAL SECTION**

STA 0+00 TO STA 35+41

**LEGEND**

- ① EXISTING 9-6-9 PCC PAVEMENT
- ② EXISTING BITUMINOUS RESURFACING
- ③ EXISTING STABILIZED SHOULDERS, 9"
- ④ EXISTING GRANULAR SUB BASE, 6"
- ⑤ EXISTING BITUMINOUS WIDENING, 3"
- ⑥ EXISTING LEVEL BINDER (MACHINE METHOD) SUPERPAVE, N50 ¾"
- ⑦ EXISTING BITUMINOUS CONCRETE SURFACE COURSE, MIX "C", N50 1½"
- ⑧ EXISTING PAVEMENT MARKING
- ⑨ EXISTING AGGREGATE SHOULDERS, TYPE B
  
- (A) PROPOSED HOT-MIX ASPHALT SURFACE REMOVAL, ¾"
- (B) PROPOSED BITUMINOUS MATERIALS (TACK COAT)
- (C) PROPOSED LONGITUDINAL JOINT SEALANT
- (D) PROPOSED POLYMERIZED HOT-MIX ASPHALT BINDER COURSE, IL-4.75, N50 ¾"
- (E) BITUMINOUS SURFACE TREATMENT, (PREVENTIVE MAINTENANCE), A-1
- (F) PROPOSED PAINT PAVEMENT MARKING LINE, 4"
- (G) PROPOSED AGGREGATE WEDGE SHOULDER, TYPE B

MODEL: Default  
 FILE: \\nrcs-pic\pub\room\dat\illinois.gov\PWIDOT\Documents\DOT\_Offices\IDartct @Projects\076N92\CADD\Drawings\076N92-shc-cover.dgn

USER NAME = simam	DESIGNED -	REVISED -
	DRAWN -	REVISED -
PLOT SCALE = 100.0000' / in.	CHECKED -	REVISED -
PLOT DATE = 12/3/2020	DATE -	REVISED -

**STATE OF ILLINOIS  
DEPARTMENT OF TRANSPORTATION**

**TYPICAL SECTIONS**

SCALE: SHEET OF SHEETS STA. TO STA.

OR RTE.	SECTION	COUNTY	TOTAL SHEETS	SHEET NO.
212	5RS-2	CLINTON	6	4
CONTRACT NO. 76N92				
		ILLINOIS	FED. AID PROJECT	

CLASS B PAVEMENT PATCHING 14 INCH SCHEDULE							
STATION	NB/SB	LENGTH (FT)	WIDTH (FT)	CLASS B PATCH TYPE IV (SQ YD)	WELDED WIRE REINFORCEMENT (SQ YD)	DOWEL BARS	SAWCUT (FT)
						1 inch (EACH)	
1+32	SB	90.0	9.0	90.0	90.0	20	117.0
SUB-TOTAL				90.00	90.0	20.00	117.00
ANTICIPATED FAILURES (15%)				13.50	13.5	3.00	17.55
TOTAL				104	104	23	135

PAVEMENT SCHEDULE									
LOCATION			WIDTH	LENGTH	HMA SURFACE REMOVAL, 3/4"	BITUMINOUS MATERIALS (TACK COAT)	BITUMINOUS SURFACE TREATMENT, (PREVENTIVE MAINTENANCE), A-1	POLYMERIZED HOT-MIX ASPHALT BINDER COURSE, 1L-4.75, N50 3/4"	LONGITUDINAL JOINT SEALANT
STA.	TO	STA.	FOOT	FOOT	SQ YD	POUND	SQ YD	TON	FOOT
FERRIN RD									
0+00	TO	35+41	18	3541	7082.00	3186.90	7082.00	297.44	3541.00
SUB TOTAL					7082.00	3186.90	7082.00	297.44	3541.00
TOTAL					7082	3187	7082	297	3541

PAVEMENT MARKING SCHEDULE											
LOCATION FERRIN RD			LENGTH FOOT	PAINT PAVEMENT MARKING LINE, 4"			PAINT PAVEMENT MARKING - LINE 24"	PAINT PAVEMENT MARKING - LETTERS AND SYMBOLS	TEMPORARY RAISED PAVEMENT MARKER	SHORT TERM PAVEMENT MARKING (2 APPLICATIONS)	SHORT TERM PAVEMENT MARKING REMOVAL
STA.	TO	STA.		SOLID WHITE	SOLID YELLOW	YELLOW					
STA.	TO	STA.	FOOT	EDGE LINE	CENTER	SKIP- DASH	FOOT	SQ FT	EACH	FOOT	SQ FT
0+00	TO	35+41	3541.0			885			161	643.8	214.6
0+41	TO	35+41	3500.0	7000.0							
SB	0+00 TO	3+15	315.0		315						
		3+15	27.0				27	61.2			
SUB TOTAL				7000.0	315.0	885.3	27.0	61.2	161.0	643.8	214.6
TOTAL				8200			27	61	161	644	215

AGGREGATE WEDGE SHOULDER, TYPE B						
LOCATION			DEPTH	LENGTH	WIDTH	AGGREGATE WEDGE SHOULDER, TYPE B
STA	TO	STA	(INCH)	FEET	FEET	TON
0+00	TO	+41	1	41	2	1.1
0+41	TO	2+98	1	257	3	10.0
2+98	TO	35+41	1	3243	2	84.1
TOTAL :						95

PAVEMENT PATCHING 14" SCHEDULE				
LOCATION		LENGTH	LANE WIDTH	PAVEMENT PATCHING TYPE II
STATION		FT	FT	SQ YD
5+16	NB	12	6	8.0
21+80	NB	12	9	12.0
SUBTOTAL :				20.0
ANTICIPATED FAILURES (15%) :				3.0
TOTAL :				23

MODEL: Default  
 FILE: \\nrcs-pkgs\pub\room\da\illinois.gov\PROJECTS\DOT\Documents\DOT\_Offices\Illinois\Projects\DOT\76N92\76N92-shc-cover.dgn

USER NAME = Simam	DESIGNED -	REVISED -
	DRAWN -	REVISED -
PLOT SCALE = 100.0000' / in.	CHECKED -	REVISED -
PLOT DATE = 12/7/2020	DATE -	REVISED -

**STATE OF ILLINOIS  
 DEPARTMENT OF TRANSPORTATION**

SCHEDULE OF QUANTITIES			
SCALE:	SHEET	OF	SHEETS
	STA.	TO	STA.

OR RTE.	SECTION	COUNTY	TOTAL SHEETS	SHEET NO.
212	5RS-2	CLINTON	6	5
CONTRACT NO. 76N92				
ILLINOIS FED. AID PROJECT				

