

STATE OF ILLINOIS  
DEPARTMENT OF TRANSPORTATION

F.A.P. RTE.	SECTION	COUNTY	TOTAL SHEETS	SHEET NO.
849	D9 BRIDGE OVERLAY 2021-1	ILLINOIS	17	1
			CONTRACT NO. 78804	

JEFFERSON & HAMILTON

FOR INDEX OF SHEETS, SEE SHEET NO. 3  
FOR SUMMARY OF QUANTITIES, SEE SHEET NO. 3

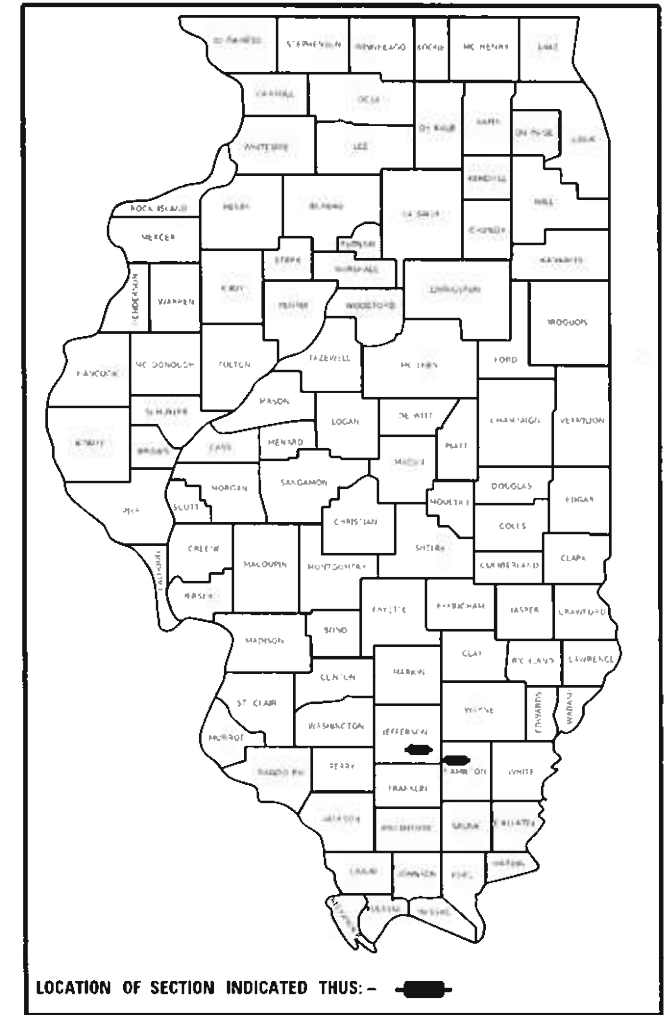
PROPOSED  
HIGHWAY PLANS

FAP ROUTE 849 (IL 142)  
SECTION D9 BRIDGE OVERLAY 2021-1  
PROJECT STP-FS2L(152)  
BRIDGE DECK OVERLAY  
JEFFERSON COUNTY & HAMILTON COUNTY

TRAFFIC DATA

ADT 2021 IL 142 @ SN 041-0040,0041,0042 = 5250 w/ 4.3% TRUCKS  
ADT 2021 IL 142 @ SN 033-0012 = 2910 w/ 15.5% TRUCKS

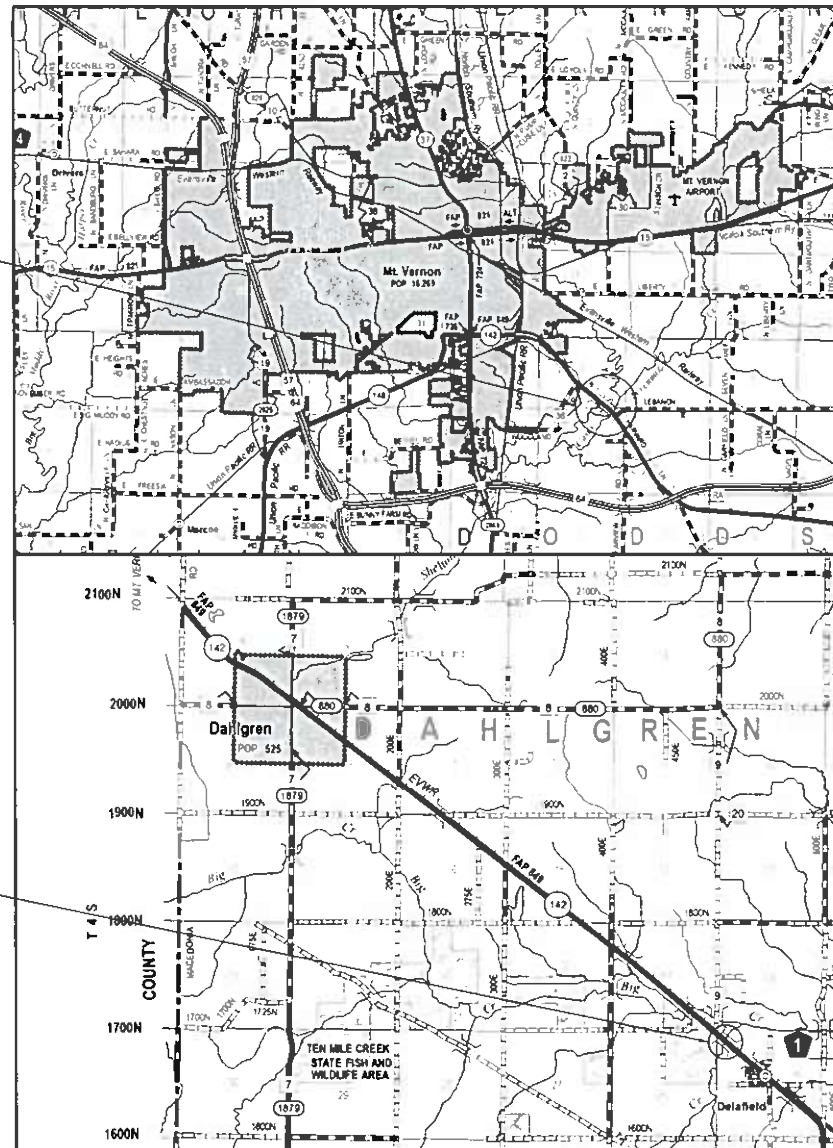
D-99-057-20



C-99-077-20

TOWNSHIPS  
DODDS  
DAHLGREN

SN 041-0040  
SN 041-0041  
SN 041-0042



SN 033-0012

POSTED SPEED : 55 MPH

J.U.L.I.E.  
JOINT UTILITY LOCATION INFORMATION FOR EXCAVATION  
1-800-892-0123  
OR 811

PROJECT ENGINEER: MICHAEL STEPHENSON  
PROJECT DESIGNER: NATHANIEL MORRIS

CONTRACT NO. 78804

STATE OF ILLINOIS  
DEPARTMENT OF TRANSPORTATION

SUBMITTED 12-07-2020  
[Signature]  
REGION FIVE ENGINEER

January 29, 2021  
[Signature]  
ENGINEER OF DESIGN AND ENVIRONMENT  
January 29, 2021  
[Signature]  
DIRECTOR OF HIGHWAYS PROJECT IMPLEMENTATION

PRINTED BY THE AUTHORITY  
OF THE STATE OF ILLINOIS



**INDEX OF SHEETS**

- 1. COVER SHEET
- 2. SIGNATURE SHEET
- 3. GENERAL NOTES, HIGHWAY STANDARDS, INDEX OF SHEETS
- 4-6 SUMMARY OF QUANTITIES
- 7-17 STRUCTURE REPAIR SHEETS

**GENERAL NOTES**

NONE

**COMMITMENTS**

NONE

**MIX REQUIREMENTS**

Locations	Hot-Mix Asphalt Surface Course
Mixture Use(s):	Hot-Mix Asphalt Surface Course, Mix D, N70
AB/PG:	PG64-22
ABR % (Max):	See Special Provision
Design Air Voids:	4.0 %, 70 Gyration Design
Mixture Composition: (Gradation Mixture)	IL-9.5mm
Friction	D Surface
Aggregate:	
Mixture Weight:	112 lbs/Sq Yd/in
Quality Management Program:	QCQA
Sublot Size:	NA

Locations	Hot-Mix Asphalt Base Course Widening
Mixture Use(s):	Hot-Mix Asphalt Binder, N30, IL-19.0L
AB/PG:	PG64-22
ABR % (Max):	See Special Provision
Design Air Voids:	4.0 %, 30 Gyration Design
Mixture Composition: (Gradation Mixture)	IL-19.0L
Friction	None
Aggregate:	
Mixture Weight:	112 lbs/Sq Yd/in
Quality Management Program:	QCQA
Sublot Size:	NA

**HIGHWAY STANDARDS**

- 000001-08 STANDARD SYMBOLS ABBREVIATIONS & PATTERNS
- 701001-02 OFF ROAD OPERATIONS 2L2W 15FT MIN FROM EOP
- 701006-05 OFF ROAD OPERATIONS 2L2W 15FT TO EOP
- 701201-05 LANE CLOSURE 2L2W DAY ONLY
- 701311-03 LANE CLOSURE 2L2W MOVING OPERATIONS DAY ONLY
- 701316-13 LANE CLOSURE 2L2W BRIDGE REPAIR 45 MPH OR MORE
- 701321-18 LANE CLOSURE 2L2W BRIDGE REPAIR WITH BARRIER
- 701326-04 LANE CLOSURE 2L2W PAVEMENT WIDENING 45 MPH OR MORE
- 701901-08 TRAFFIC CONTROL DEVICES
- 780001-05 TELESOPING STEEL SIGN SUPPORT
- 862001-01 UNINTERRUPTABLE POWER SUPPLY

REV. - MS

JEFFERSON & HAMILTON

MODEL: D:\full\supplancorom.dta\Illinois\poc\PIW\DOT\Documents\DOT Office\District 9\Projects\78804\CADD\data\CADD\Sheets\0778804-Sheets.dgn  
 FILE NAME: P:\supplancorom.dta\Illinois\poc\PIW\DOT\Documents\DOT Office\District 9\Projects\78804\CADD\data\CADD\Sheets\0778804-Sheets.dgn

USER NAME = MORRISNR PLOT SCALE = 100.0000' / in. PLOT DATE = 11/25/2020	DESIGNED - _____ DRAWN - _____	REVISED - _____ REVISED - _____	<b>STATE OF ILLINOIS DEPARTMENT OF TRANSPORTATION</b>	<b>INDEX OF SHEETS, GENERAL NOTES, HIGHWAY STANDARDS</b>	SCALE: _____ SHEET ____ OF ____ SHEETS STA. _____ TO STA. _____	F.A.P. RTE. 849 SECTION D9 BRIDGE OVERLAY 2021-1 COUNTY * TOTAL SHEETS 17 SHEET NO. 3
	CHECKED - _____ DATE - _____	REVISED - _____ REVISED - _____			CONTRACT NO. 78804 ILLINOIS FED. AID PROJECT	

# SUMMARY OF QUANTITIES

COUNTY:	Jefferson	Hamilton
Route:	IL 142	
FUNDING:	80% FEDERAL 20% STATE	
LOCATION:	RURAL	

CODE NUMBER	ITEM DESCRIPTION	UNIT	TOTAL QUANTITY	SN 041-0040	SN 041-0041	SN 041-0042	SN 033-0012
				0013	0013	0013	0013
35600716	HOT-MIX ASPHALT BASE COURSE WIDENING, 10"	SQ YD	261	261			
40600290	BITUMINOUS MATERIALS (TACK COAT)	POUND	227	227			
40600982	HOT-MIX ASPHALT SURFACE REMOVAL - BUTT JOINT	SQ YD	120	120			
40600990	TEMPORARY RAMP	SQ YD	12	12			
40604012	HOT-MIX ASPHALT SURFACE COURSE, IL-9.5FG, MIX "D", N70	TON	34	34			
50102400	CONCRETE REMOVAL	CU YD	15.4	15.4			
50300255	CONCRETE SUPERSTRUCTURE	CU YD	17.4	17.4			
50300260	BRIDGE DECK GROOVING	SQ YD	474	474			
50300300	PROTECTIVE COAT	SQ YD	546	546			
50800205	REINFORCEMENT BARS, EPOXY COATED	POUND	2,010	2,010			
50800515	BAR SPLICERS	EACH	24	24			
52000110	PREFORMED JOINT STRIP SEAL	FOOT	110	110			
67000400	ENGINEER'S FIELD OFFICE, TYPE A	CAL MO	4	1	1	1	1
67100100	MOBILIZATION	L SUM	1	0.25	0.25	0.25	0.25

MODEL: D:\default  
 FILE: M:\M&E\_Plan\planroom.dwg  
 PROJECT: 78804\CADDData\CADD\Sheet\0778804-Sheets.dgn

JEFFERSON & HAMILTON

USER NAME = MORRISNR PLOT SCALE = 100.0000' / in. PLOT DATE = 11/23/2020	DESIGNED - _____ DRAWN - _____ CHECKED - _____ DATE - _____	REVISED - _____ REVISED - _____ REVISED - _____ REVISED - _____	STATE OF ILLINOIS DEPARTMENT OF TRANSPORTATION	SUMMARY OF QUANTITIES SCALE: _____ SHEET ____ OF ____ SHEETS STA. _____ TO STA. _____	F.A.P. RTE. 849 SECTION D9 BRIDGE OVERLAY 2021-1 COUNTY * TOTAL SHEETS 17 SHEET NO. 4 CONTRACT NO. 78804 ILLINOIS FED. AID PROJECT
--	--	--	---	--	--

# SUMMARY OF QUANTITIES - CONT

COUNTY:	Jefferson	Hamilton
Route:	IL 142	
FUNDING:	80% FEDERAL 20% STATE	
LOCATION:	RURAL	

CODE NUMBER	ITEM DESCRIPTION	UNIT	TOTAL QUANTITY	SN 041-0040	SN 041-0041	SN 041-0042	SN 033-0012
				0013	0013	0013	0013
70100100	TRAFFIC CONTROL AND PROTECTION, STANDARD 701316	EACH	3		1	1	1
70100405	TRAFFIC CONTROL AND PROTECTION, STANDARD 701321	EACH	1	1			
70100450	TRAFFIC CONTROL AND PROTECTION, STANDARD 701201	L SUM	1	0.25	0.25	0.25	0.25
70100500	TRAFFIC CONTROL AND PROTECTION, STANDARD 701326	L SUM	1	1			
70103815	TRAFFIC CONTROL SURVEILLANCE	CAL DA	6	6			
70106500	TEMPORARY BRIDGE TRAFFIC SIGNALS	EACH	4	1	1	1	1
70106700	TEMPORARY RUMBLE STRIPS	EACH	24	6	6	6	6
70107025	CHANGEABLE MESSAGE SIGN	CAL DA	112	28	28	28	28
70300100	SHORT TERM PAVEMENT MARKING	FOOT	115	46	22.5	30.5	16
70300150	SHORT TERM PAVEMENT MARKING REMOVAL	SQ FT	39	15	8	11	5
70400100	TEMPORARY CONCRETE BARRIER	FOOT	650	650			
70400200	RELOCATE TEMPORARY CONCRETE BARRIER	FOOT	625	625			
70600250	IMPACT ATTENUATORS, TEMPORARY (NON- REDIRECTIVE), TEST LEVEL 3	EACH	2	2			
70600350	IMPACT ATTENUATORS, RELOCATE (NON- REDIRECTIVE), TEST LEVEL 3	EACH	2	2			

MODEL: D:\full...  
 FILE: MAME...  
 PROJECT: 78804\CADD\Drawings\DOT Office\Drawings\78804\CADD\Drawings\78804-Sheets.dgn

JEFFERSON & HAMILTON

USER NAME = MORRISNR DESIGNED - _____ DRAWN - _____ PLOT SCALE = 100.0000' / in. CHECKED - _____ PLOT DATE = 11/20/2020 DATE - _____	REVISED - _____ REVISED - _____ REVISED - _____ REVISED - _____	STATE OF ILLINOIS DEPARTMENT OF TRANSPORTATION	SUMMARY OF QUANTITIES CONT. SCALE: _____ SHEET ____ OF ____ SHEETS STA. _____ TO STA. _____	F.A.P. RTE. 849 SECTION D9 BRIDGE OVERLAY 2021-1 COUNTY * TOTAL SHEETS 17 SHEET NO. 5 CONTRACT NO. 78804 ILLINOIS FED. AID PROJECT
--	--	---	--	--

# SUMMARY OF QUANTITIES - CONT

COUNTY:	Jefferson	Hamilton
Route:	IL 142	
FUNDING:	80% FEDERAL 20% STATE	
LOCATION:	RURAL	

CODE NUMBER	ITEM DESCRIPTION	UNIT	TOTAL QUANTITY	SN 041-0040	SN 041-0041	SN 041-0042	SN 033-0012
				0013	0013	0013	0013
* 78001110	PAINT PAVEMENT MARKING - LINE 4"	FOOT	2,259	995	396	672	196
* 86200300	UNINTERRUPTABLE POWER SUPPLY, EXTENDED	EACH	4	1	1	1	1
78300201	PAVEMENT MARKING REMOVAL - GRINDING	SQ FT	754	333	132	224	65
Z0012102	CONCRETE BRIDGE DECK SCARIFICATION 3/8 INCH	SQ YD	1,479		498	668	313
Z0012130	BRIDGE DECK SCARIFICATION 3/4"	SQ YD	502	502			
Z0012164	BRIDGE DECK MICROSILICA CONCRETE OVERLAY 2 1/2"	SQ YD	502	502			
Z0012193	BRIDGE DECK THIN POLYMER OVERLAY 3/8"	SQ YD	1,479		498	668	313

\* SPECIALTY ITEM

REV. - MS

JEFFERSON & HAMILTON

MODEL: D:\p\... FILE NAME: ...

USER NAME = MORRISNR	DESIGNED - _____	REVISED - _____
DRAWN - _____	REVISIONS - _____	
PLOT SCALE = 100.0000' / in.	CHECKED - _____	REVISED - _____
PLOT DATE = 11/20/2020	DATE - _____	REVISED - _____

**STATE OF ILLINOIS  
DEPARTMENT OF TRANSPORTATION**

**SUMMARY OF QUANTITIES CONT.**

SCALE: \_\_\_\_\_ SHEET \_\_\_ OF \_\_\_ SHEETS STA. \_\_\_\_\_ TO STA. \_\_\_\_\_

F.A.P. RTE.	SECTION	COUNTY	TOTAL SHEETS	SHEET NO.
849	D9 BRIDGE OVERLAY 2021-1	*	17	6
CONTRACT NO. 78804			ILLINOIS FED. AID PROJECT	

**GENERAL NOTES**

Plan dimensions and details relative to existing plans are subject to nominal construction variations. The Contractor shall field verify existing dimensions and details affecting new construction and make necessary approved adjustments prior to construction or ordering of materials. Such variations shall not be cause for additional compensation for a change in scope of the work, however, the Contractor will be paid for the quantity actually furnished at the unit price bid for the work.

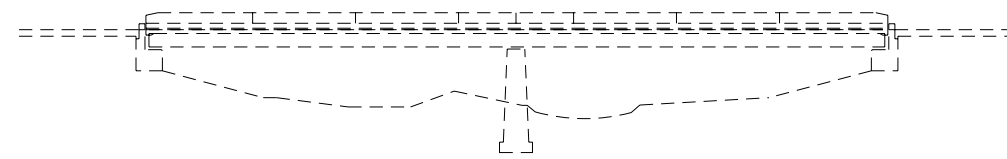
Joint openings shall be adjusted according to Article 520.04 of the Std. Specs. when the deck is poured at an ambient temperature other than 50°F.

Prior to pouring the new concrete deck section, all heavy or loose rust, loose mill scale, and other loose or potentially detrimental foreign material shall be removed from the surfaces in contact with concrete. Tightly adhered paint may remain unless otherwise noted. Removal shall be accomplished by methods that will not damage the steel and the cost will be included in the pay item covering removal of the existing concrete.

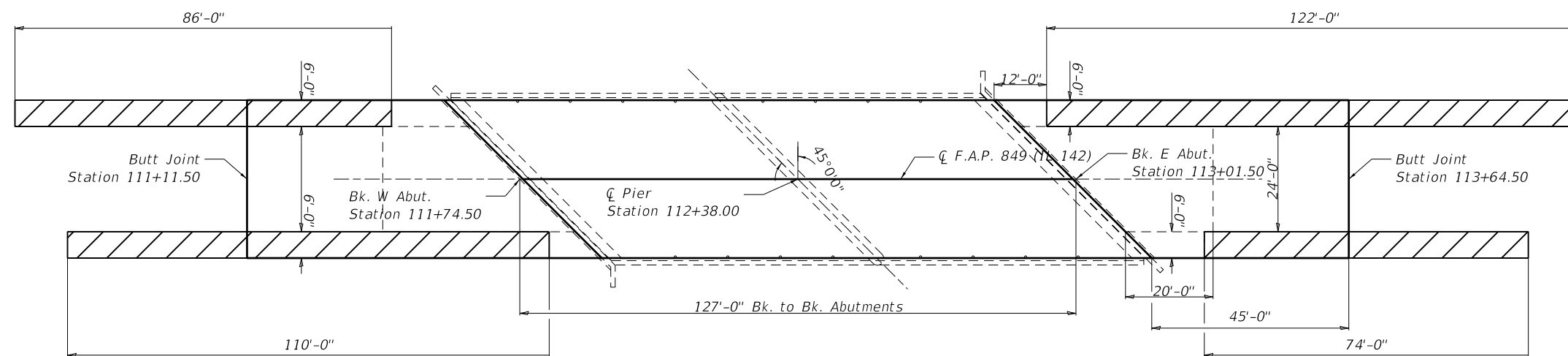
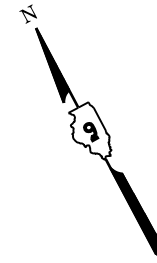
Existing reinforcement bars extending into the removal area shall be cleaned, straightened and incorporated into the new construction. Any reinforcement bars that are damaged during concrete removal shall be replaced with an approved bar splicer or anchorage system. Cost included with Concrete Removal.

Reinforcement bars designated (E) shall be epoxy coated.

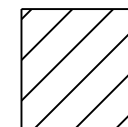
The cost to remove and re-erect the terminals attached to the parapets shall be included in the cost of Concrete Removal



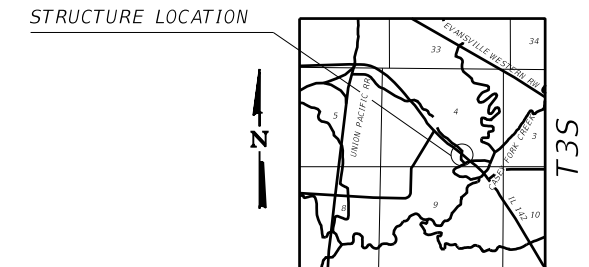
**ELEVATION**



**PLAN**



Paved Shoulder Removal  
Hot Mix Asphalt Base Course Widening, 10"



**R3E  
LOCATION PLAN**

**TOTAL BILL OF MATERIAL**

ITEM	UNIT	QUANTITY
Concrete Removal	Cu. Yd.	15.4
Concrete Superstructure	Cu. Yd.	17.4
Protective Coat	Sq. Yd.	546
Reinforcement Bars, Epoxy Coated	Pound	2010
Bar Splicers	Each	24
Preformed Joint Strip Seal	Foot	110
Hot-Mix Asphalt Surface Course	Ton	34
Hot-Mix Asphalt Base Course Widening, 10"	Sq. Yd.	261
Hot-Mix Asphalt Surface Removal - Butt Joint	Sq. Yd.	120
Paved Shoulder Removal	Sq. Yd.	261
Bituminous Materials (Tack Coat)	Pound	227
Temporary Ramp	Sq. Yd.	12
Bridge Deck Scarification 3/4"	Sq. Yd.	502
Bridge Deck Microsilica Concrete Overlay 2 1/2"	Sq. Yd.	502
Bridge Deck Grooving	Sq. Yd.	474

\* On New Concrete Only



Expires 11-30-2022

*David Carl Puzey*

01/25/2021

**GENERAL PLAN  
IL 142 OVER BRANCH OF CASEY FORK  
FAP 849- D9 BRIDGE OVERLAY 2021-1  
JEFFERSON COUNTY  
STATION 112+00**

MODEL: 041-0040 Plan and Elevation  
FILE NAME: P:\Information\GIS\Projects\78804\CADD\Drawings\DOT\Documents\DOT\Office\Drawings\78804\CADD\Drawings\DOT\78804-Sheets.dwg

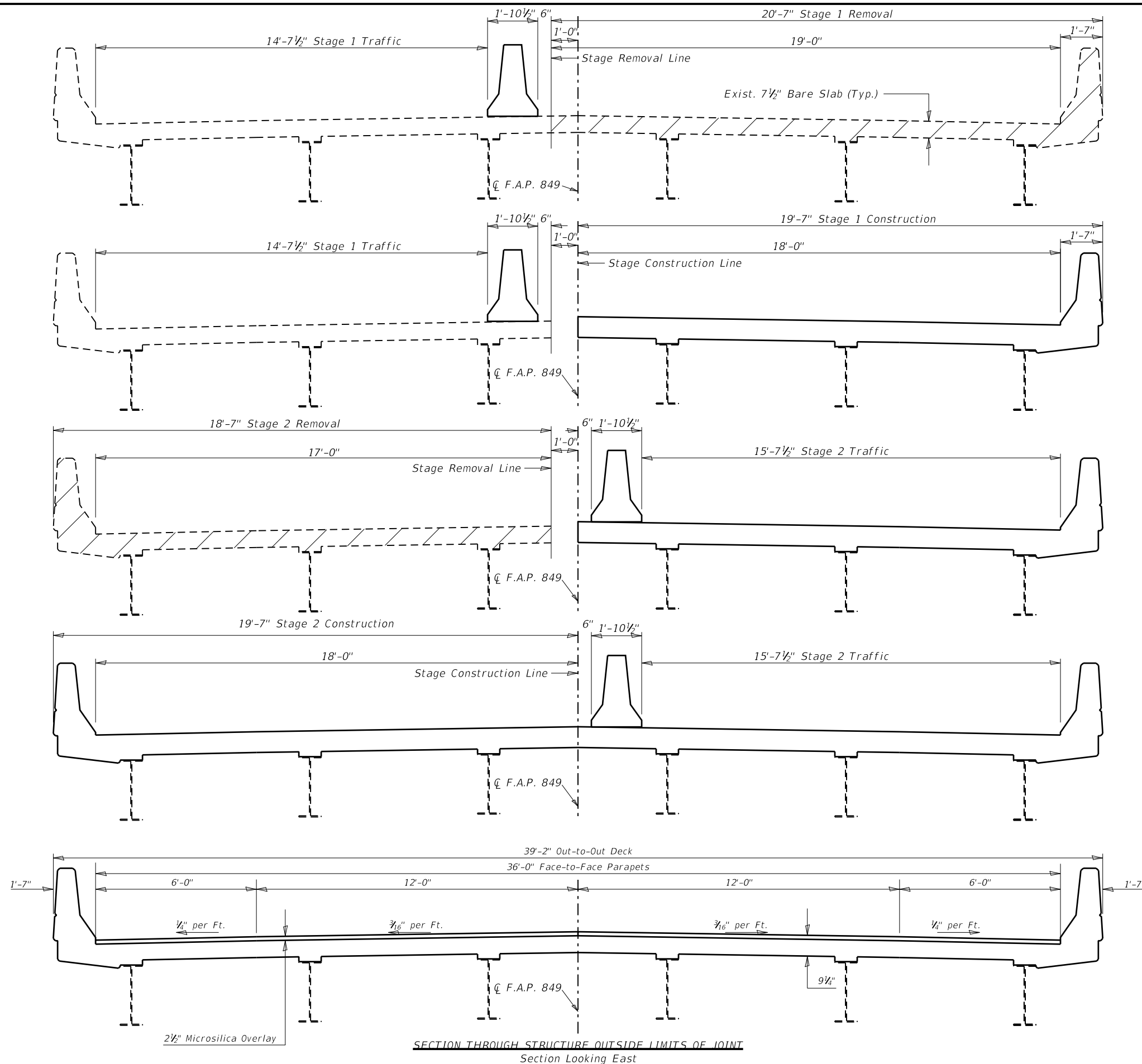
USER NAME = MORRISNR	DESIGNED - _____	REVISED - _____
PLOT SCALE = 32.0000' / in.	DRAWN - _____	REVISED - _____
PLOT DATE = 12/21/2020	CHECKED - _____	REVISED - _____
	DATE - _____	REVISED - _____

**STATE OF ILLINOIS  
DEPARTMENT OF TRANSPORTATION**

**SN 041-0040  
GENERAL PLAN & ELEVATION**

SCALE: \_\_\_\_\_ SHEET \_\_\_\_ OF \_\_\_\_ SHEETS STA. \_\_\_\_\_ TO STA. \_\_\_\_\_

F.A.P. RTE.	SECTION	COUNTY	TOTAL SHEETS	SHEET NO.
849	D9 BRIDGE OVERLAY 2021-1	*	17	7
ILLINOIS FED. AID PROJECT			CONTRACT NO. 78804	



 Concrete Removal at Joint Reconstruction

**STAGING DETAILS**  
**IL 142 OVER BRANCH OF CASEY FORK**  
**FAP 849- D9 BRIDGE OVERLAY 2021-1**  
**JEFFERSON COUNTY**  
**STATION 112+00**

SECTION THROUGH STRUCTURE OUTSIDE LIMITS OF JOINT  
 Section Looking East

MODEL Stage Construction Sheets  
 FILE NAME: P:\Information\GIS\Projects\DOT\Office\DOT\Projects\78804\CADD\Sheet\09 78804-Sheets.dgn

USER NAME = MORRISNR	DESIGNED - _____	REVISED - _____
PLOT SCALE = 4.0000' / in.	DRAWN - _____	REVISED - _____
PLOT DATE = 11/20/2020	CHECKED - _____	REVISED - _____
	DATE - _____	REVISED - _____

**STATE OF ILLINOIS**  
**DEPARTMENT OF TRANSPORTATION**

**SN 041-0040**  
**STAGING DETAILS**

SCALE: \_\_\_\_\_ SHEET \_\_\_\_\_ OF \_\_\_\_\_ SHEETS STA. \_\_\_\_\_ TO STA. \_\_\_\_\_

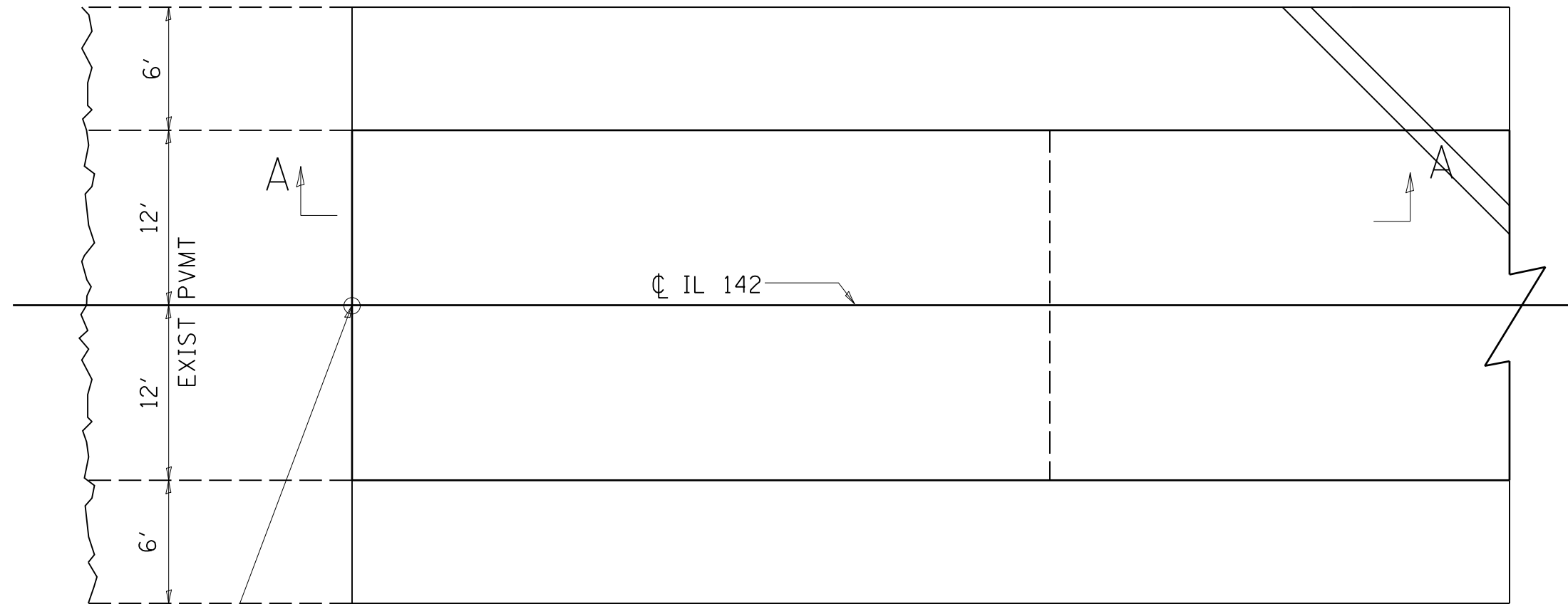
F.A.P. RTE.	SECTION	COUNTY	TOTAL SHEETS	SHEET NO.
849	D9 BRIDGE OVERLAY 2021-1	*	17	8
CONTRACT NO. 78804			ILLINOIS FED. AID PROJECT	







# BUTT JOINT

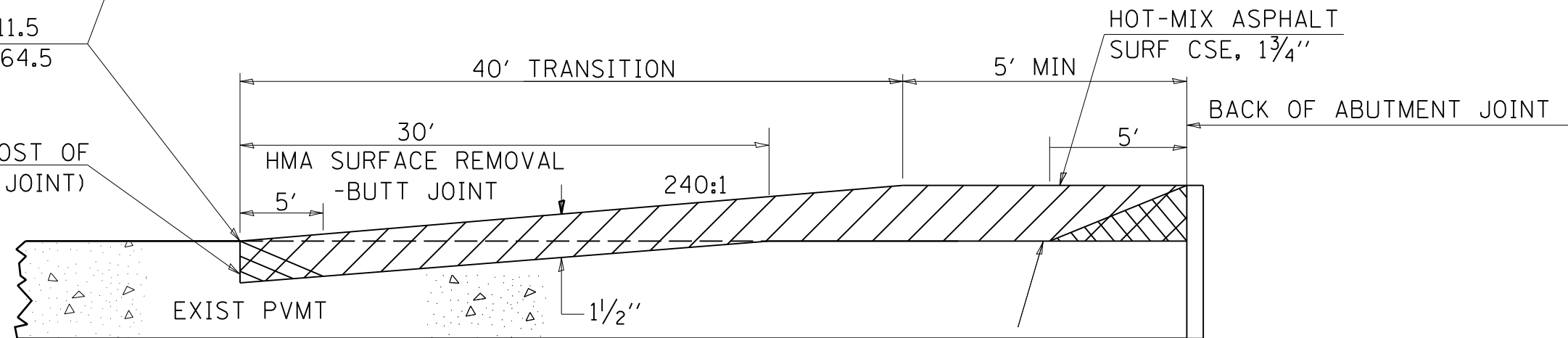


HAMILTON 78804

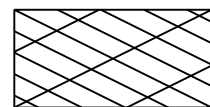
D9 Bridge Overlay 2021-1

STA 111+11.5  
STA 113+64.5

SAW CUT (INCLUDED IN THE COST OF HMA SURFACE REMOVAL-BUTT JOINT)



## LEGEND:



TEMPORARY RAMP



HMA SURF CSE

## SECTION A-A

\* JEFFERSON & HAMILTON

MODEL: Butt Joint Detail  
FILE NAME: P:\Highways\Illinois\DOT\Office\District 9\Projects\78804\CADD\Drawings\DOT\78804-Sheets.dwg

USER NAME = MORRISNR	DESIGNED - ASH	REVISED - _____
	DRAWN - ASH	REVISED - _____
PLOT SCALE = 50.0000' / in.	CHECKED - MAS	REVISED - _____
PLOT DATE = 11/20/2020	DATE - 10/01/2019	REVISED - _____

**STATE OF ILLINOIS  
DEPARTMENT OF TRANSPORTATION**

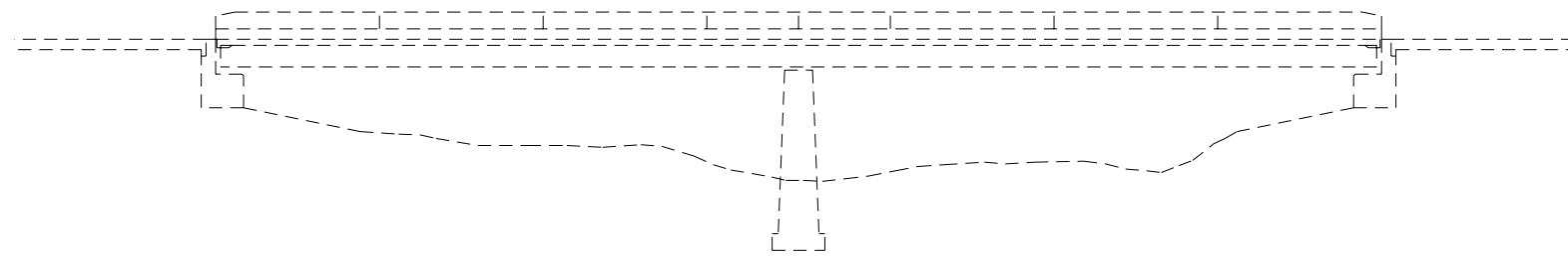
**SN 041-0040 BUTT JOINT DETAIL**

SCALE: \_\_\_\_\_ SHEET \_\_\_\_ OF \_\_\_\_ SHEETS STA. \_\_\_\_\_ TO STA. \_\_\_\_\_

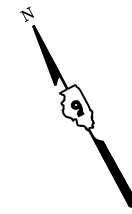
F.A.P. RTE.	SECTION	COUNTY	TOTAL SHEETS	SHEET NO.
849	D9 BRIDGE OVERLAY 2021-1	*	17	11
CONTRACT NO. 78804				
ILLINOIS FED. AID PROJECT				

**GENERAL NOTES**

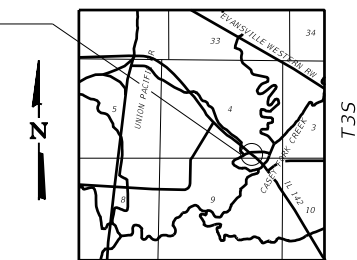
Plan dimensions and details relative to existing plans are subject to nominal construction variations. The Contractor shall field verify existing dimensions and details affecting new construction and make necessary approved adjustments prior to construction or ordering of materials. Such variations shall not be cause for additional compensation for a change in scope of the work, however, the Contractor will be paid for the quantity actually furnished at the unit price bid for the work.



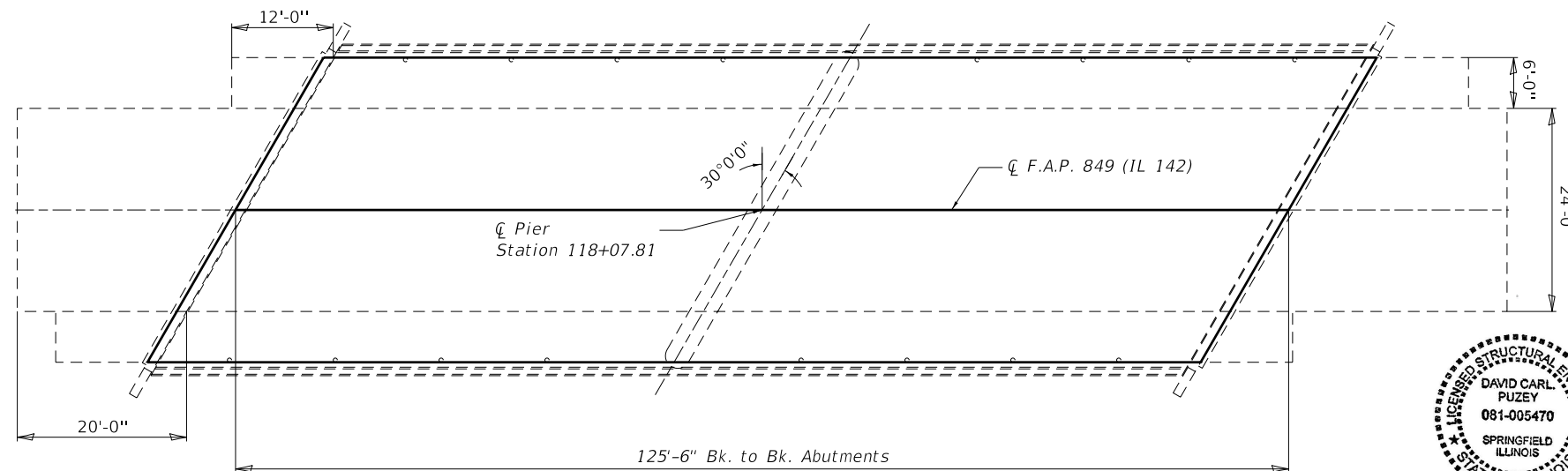
**ELEVATION**



STRUCTURE LOCATION



**LOCATION PLAN**



**PLAN**

**TOTAL BILL OF MATERIAL**

ITEM	UNIT	QUANTITY
Concrete Bridge Deck Scarification, 3/8"	Sq. Yd.	498
Bridge Deck Thin Polymer Overlay, 3/8"	Sq. Yd.	498



Expires 11-30-2022

*David Carl Puzey*

01/25/2021

**BRIDGE DECK POLYMER OVERLAY  
IL 142 OVER CASEY FORK CREEK  
FAP 849- D9 BRIDGE OVERLAY 2021-1  
JEFFERSON COUNTY  
STATION 118+07.81**

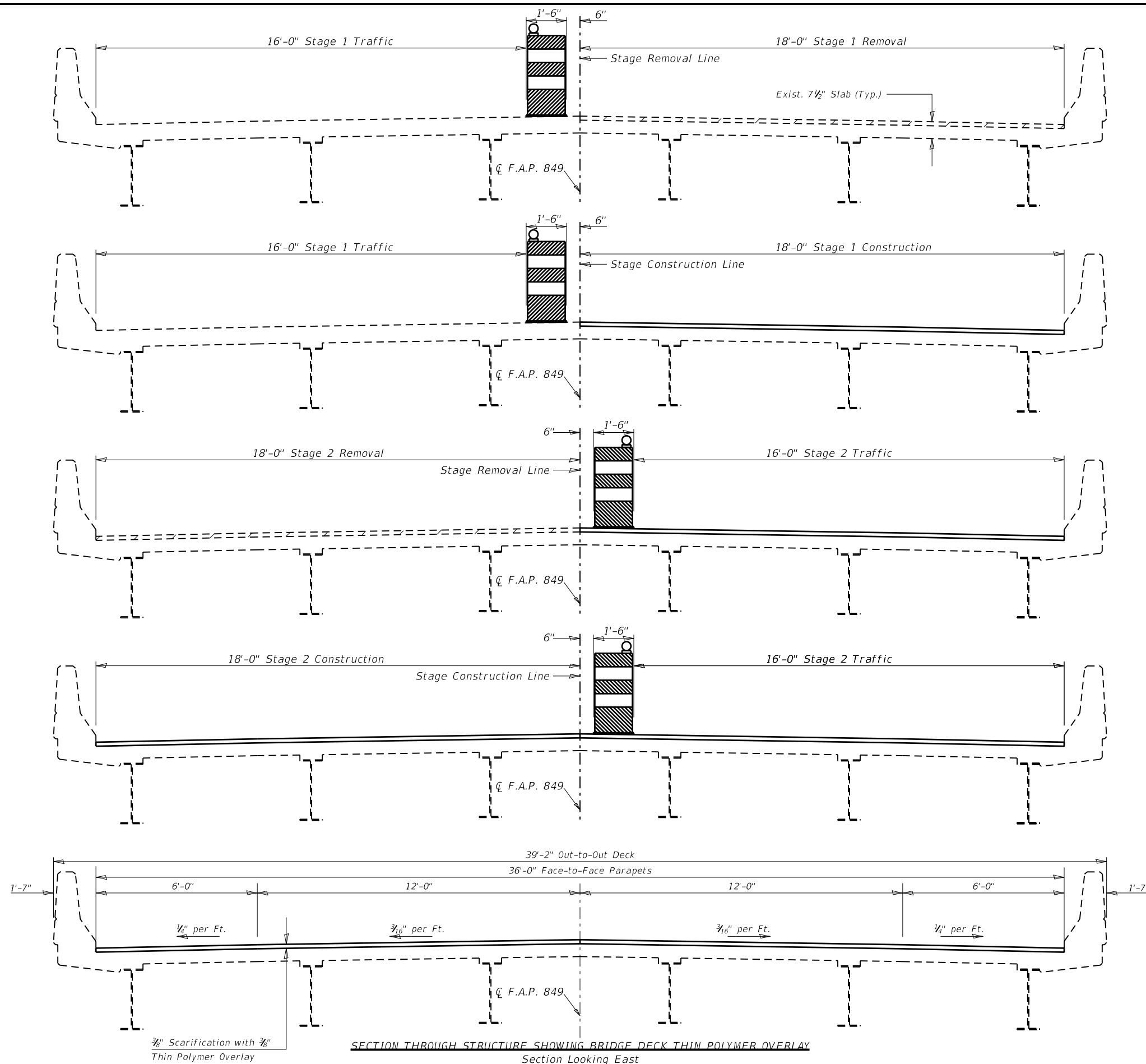
MODEL: General Plan and Elevation Sheets  
FILE NAME: P:\pub\118000\118000\118000\DOT\Documents\DOT Office\Sheet\9\Projects\78804\CADD\Sheet\0778804-Sheets.dgn

USER NAME = MORRISNR	DESIGNED - _____	REVISED - _____
PLOT SCALE = 20.0000 ' / in.	DRAWN - _____	REVISED - _____
PLOT DATE = 11/23/2020	CHECKED - _____	REVISED - _____
	DATE - _____	REVISED - _____

**STATE OF ILLINOIS  
DEPARTMENT OF TRANSPORTATION**

SN 041-0041	
GENERAL PLAN & ELEVATION	
SCALE: _____	SHEET ____ OF ____ SHEETS STA. _____ TO STA. _____

F.A.P. RTE.	SECTION	COUNTY	TOTAL SHEETS	SHEET NO.
849	D9 BRIDGE OVERLAY 2021-1	*	17	12
CONTRACT NO. 78804				
ILLINOIS FED. AID PROJECT				



 Concrete Bridge Deck Scarification  $\frac{3}{8}$ "

**BRIDGE DECK POLYMER OVERLAY  
IL 142 OVER CASEY FORK CREEK  
FAP 849- D9 BRIDGE OVERLAY 2021-1  
JEFFERSON COUNTY  
STATION 118+07.81**

MODEL Stage Construction Sheets  
FILE NAME: P:\Highways\Illinois\spc\PI\DOT\Documents\DOT Office\District 9\Projects\78804\CADD\Sheet\09 78804-Sheets.dgn

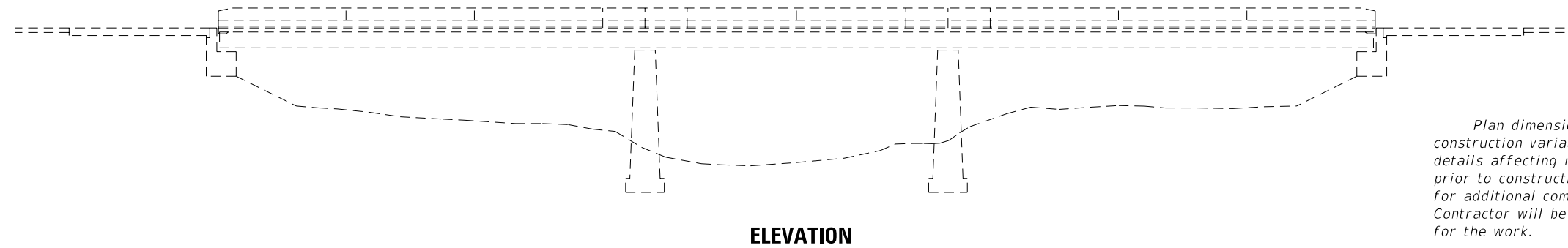
USER NAME = MORRISNR	DESIGNED - _____	REVISED - _____
PLOT SCALE = 4.0000 ' / in.	DRAWN - _____	REVISED - _____
PLOT DATE = 11/20/2020	CHECKED - _____	REVISED - _____
	DATE - _____	REVISED - _____

**STATE OF ILLINOIS  
DEPARTMENT OF TRANSPORTATION**

**SN 041-0041  
STAGING DETAILS**

SCALE: \_\_\_\_\_ SHEET \_\_\_\_\_ OF \_\_\_\_\_ SHEETS STA. \_\_\_\_\_ TO STA. \_\_\_\_\_

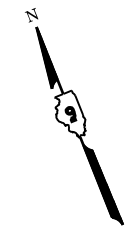
F.A.P. RTE.	SECTION	COUNTY	TOTAL SHEETS	SHEET NO.
849	D9 BRIDGE OVERLAY 2021-1	*	17	13
CONTRACT NO. 78804			ILLINOIS FED. AID PROJECT	



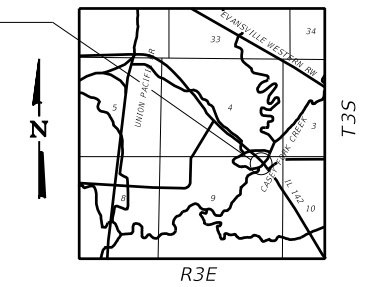
**ELEVATION**

**GENERAL NOTES**

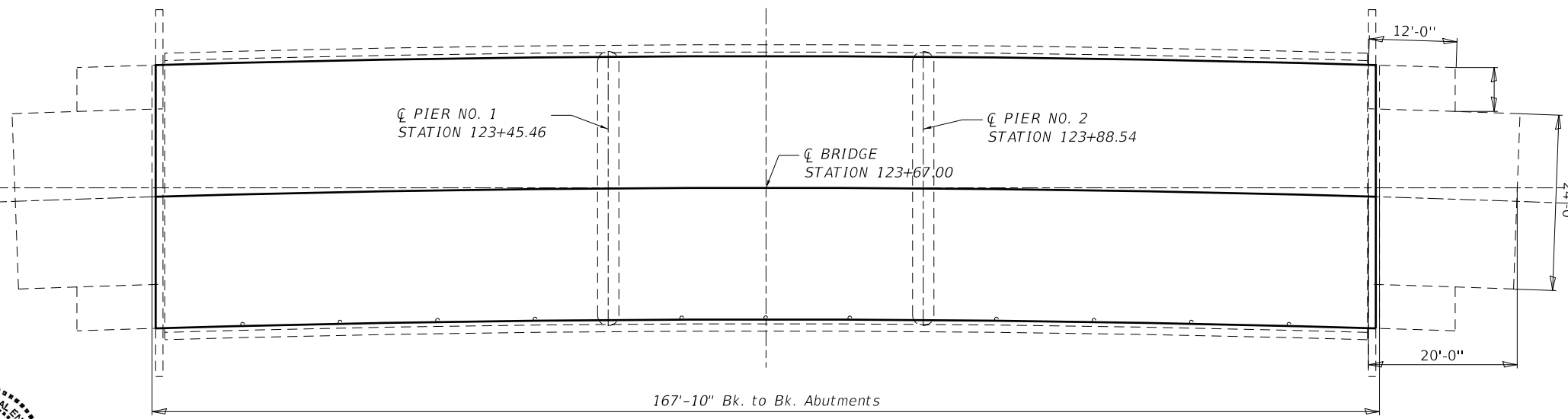
Plan dimensions and details relative to existing plans are subject to nominal construction variations. The Contractor shall field verify existing dimensions and details affecting new construction and make necessary approved adjustments prior to construction or ordering of materials. Such variations shall not be cause for additional compensation for a change in scope of the work, however, the Contractor will be paid for the quantity actually furnished at the unit price bid for the work.



STRUCTURE LOCATION



**LOCATION PLAN**



**PLAN**

**TOTAL BILL OF MATERIAL**

ITEM	UNIT	QUANTITY
Concrete Bridge Deck Scarification, $\frac{3}{8}$ "	Sq. Yd.	668
Bridge Deck Thin Polymer Overlay, $\frac{3}{8}$ "	Sq. Yd.	668



Expires 11-30-2022

*David Carl Puze*

01/25/2021

**BRIDGE DECK POLYMER OVERLAY  
IL 142 OVER CASEY FORK CREEK  
FAP 849- D9 BRIDGE OVERLAY 2021-1  
JEFFERSON COUNTY  
STATION 123+67.00**

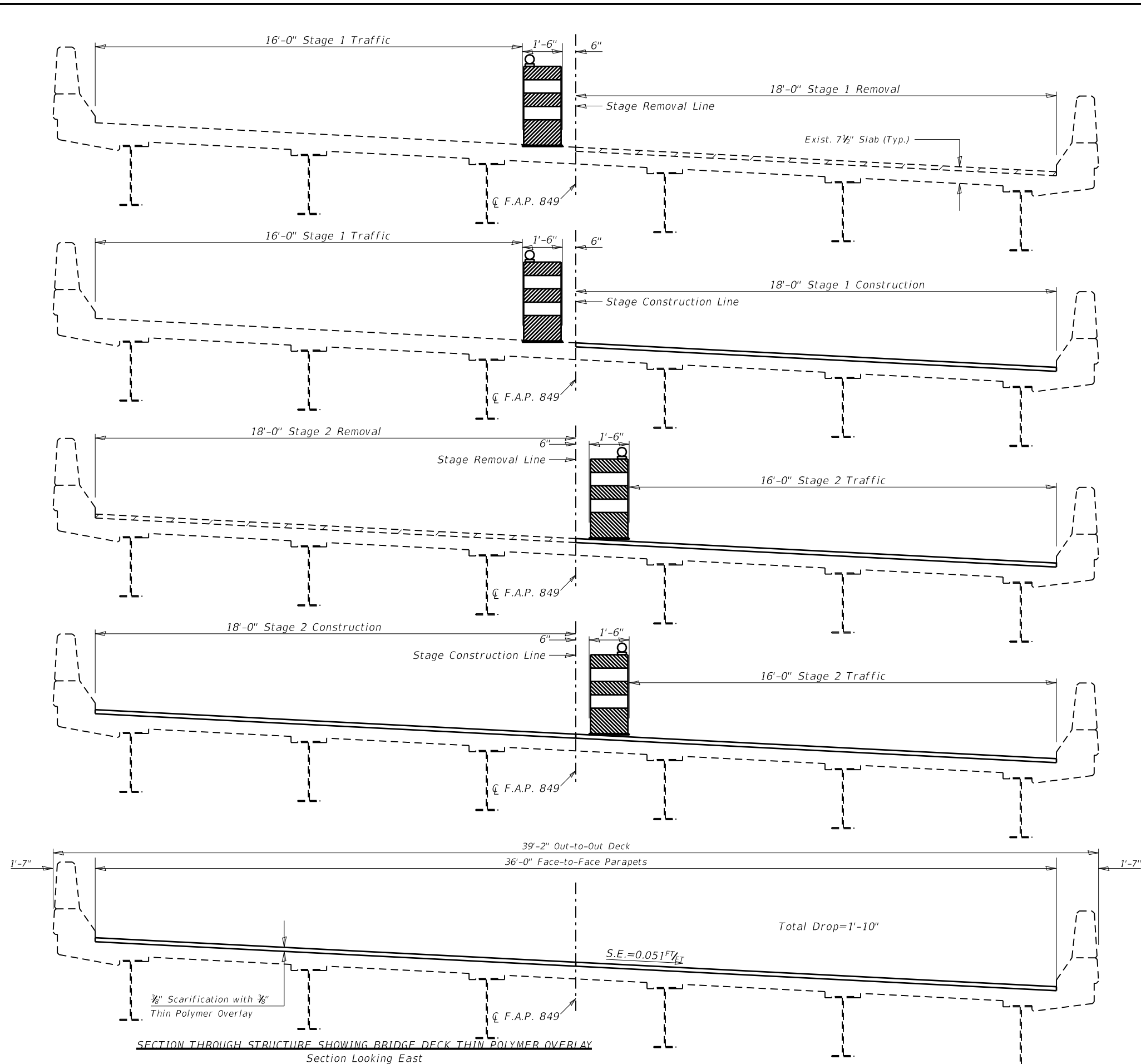
MODEL: General Plan and Elevation Sheets  
FILE NAME: P:\pub\hennings\2021\11\23\DOT\Documents\DOT Office\District 9\Projects\78804\CADD\Sheet\0978804-Sheets.dgn

USER NAME = MORRISNR	DESIGNED - _____	REVISED - _____
PLOT SCALE = 20.0000 ' / in.	DRAWN - _____	REVISED - _____
PLOT DATE = 11/23/2020	CHECKED - _____	REVISED - _____
	DATE - _____	REVISED - _____

**STATE OF ILLINOIS  
DEPARTMENT OF TRANSPORTATION**

**SN 041-0042  
GENERAL PLAN AND ELEVATION**  
SCALE: \_\_\_\_\_ SHEET \_\_\_\_ OF \_\_\_\_ SHEETS STA. \_\_\_\_\_ TO STA. \_\_\_\_\_

F.A.P. RTE.	SECTION	COUNTY	TOTAL SHEETS	SHEET NO.
849	D9 BRIDGE OVERLAY 2021-1	*	17	14
			CONTRACT NO. 78804	
ILLINOIS FED. AID PROJECT				



Concrete Bridge Deck Scarification 3/8"

**BRIDGE DECK POLYMER OVERLAY  
IL 142 OVER CASEY FORK CREEK  
FAP 849- D9 BRIDGE OVERLAY 2021-1  
JEFFERSON COUNTY  
STATION 123+67.00**

MODEL Stage Construction Sheets  
FILE NAME: P:\p1\morrison\morrison\p1\DOT\Documents\DOT Office\District 9\Projects\78804\CADD\Sheet\0978804-Sheets.dgn

USER NAME = MORRISNR	DESIGNED - _____	REVISED - _____
PLOT SCALE = 4.0000' / in.	DRAWN - _____	REVISED - _____
PLOT DATE = 11/20/2020	CHECKED - _____	REVISED - _____
	DATE - _____	REVISED - _____

**STATE OF ILLINOIS  
DEPARTMENT OF TRANSPORTATION**

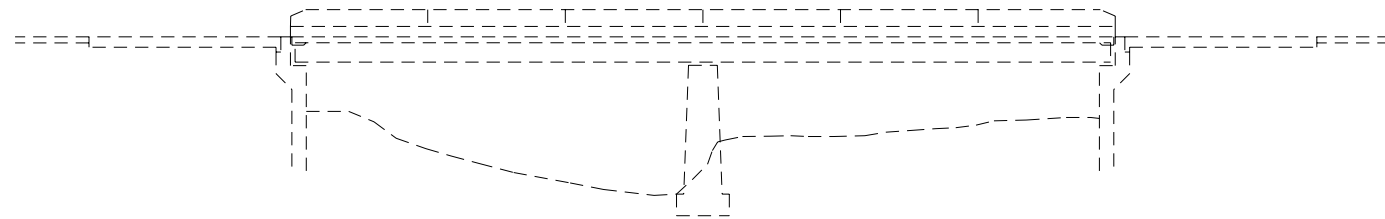
**SN 041-0042  
STAGING DETAILS**

SCALE: \_\_\_\_\_ SHEET \_\_\_\_\_ OF \_\_\_\_\_ SHEETS STA. \_\_\_\_\_ TO STA. \_\_\_\_\_

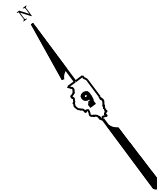
F.A.P. RTE.	SECTION	COUNTY	TOTAL SHEETS	SHEET NO.
849	D9 BRIDGE OVERLAY 2021-1	*	17	15
ILLINOIS FED. AID PROJECT			CONTRACT NO. 78804	

**GENERAL NOTES**

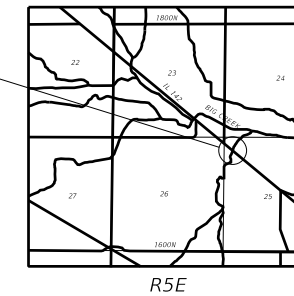
Plan dimensions and details relative to existing plans are subject to nominal construction variations. The Contractor shall field verify existing dimensions and details affecting new construction and make necessary approved adjustments prior to construction or ordering of materials. Such variations shall not be cause for additional compensation for a change in scope of the work, however, the Contractor will be paid for the quantity actually furnished at the unit price bid for the work.



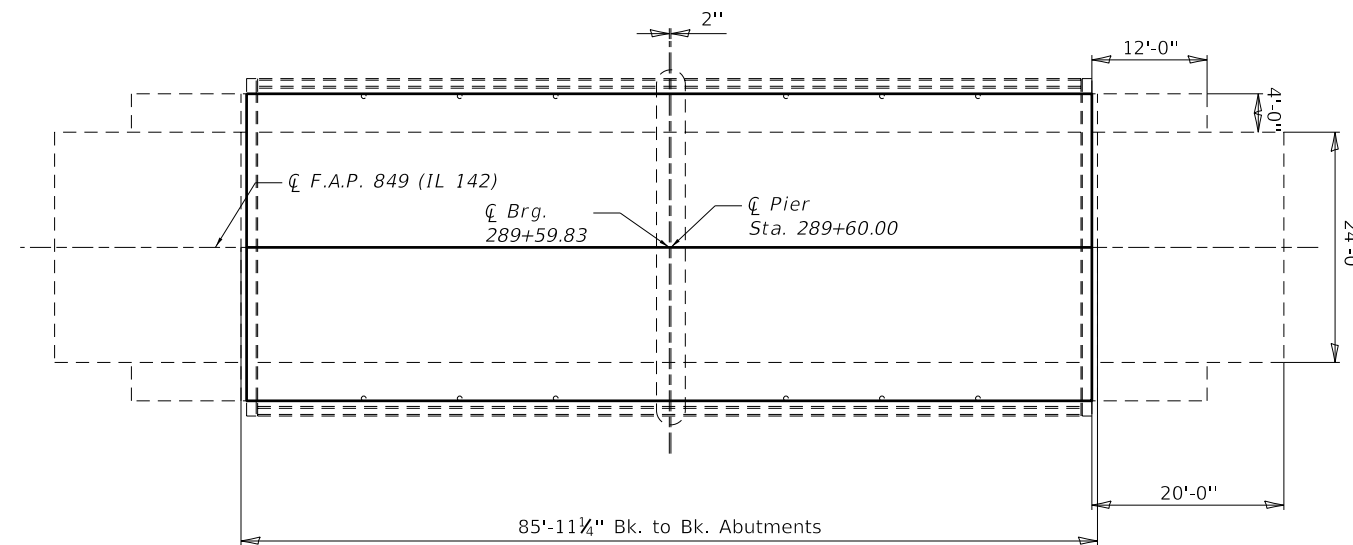
**ELEVATION**



STRUCTURE LOCATION



**LOCATION PLAN**



**PLAN**

**TOTAL BILL OF MATERIAL**

ITEM	UNIT	QUANTITY
Concrete Bridge Deck Scarification, $\frac{3}{8}$ "	Sq. Yd.	313
Bridge Deck Thin Polymer Overlay, $\frac{3}{8}$ "	Sq. Yd.	313



Expires 11-30-2022

*David Carl Puzey*

01/25/2021

**BRIDGE DECK POLYMER OVERLAY  
IL 142 OVER MIDDLE CREEK  
FAP 849- D9 BRIDGE OVERLAY 2021-1  
HAMILTON COUNTY  
STATION 289+59.83**

MODEL: General Plan and Elevation Sheets  
FILE NAME: P:\Information\GIS\Projects\DOT\Office\District 9\Projects\78804\CADD\Drawings\DOT\Documents\DOT\Office\District 9\Projects\78804\CADD\Drawings\DOT\78804-Sheets.dwg

USER NAME = MORRISNR	DESIGNED - _____	REVISED - _____
PLOT SCALE = 20.0000 ' / in.	DRAWN - _____	REVISED - _____
PLOT DATE = 11/23/2020	CHECKED - _____	REVISED - _____
	DATE - _____	REVISED - _____

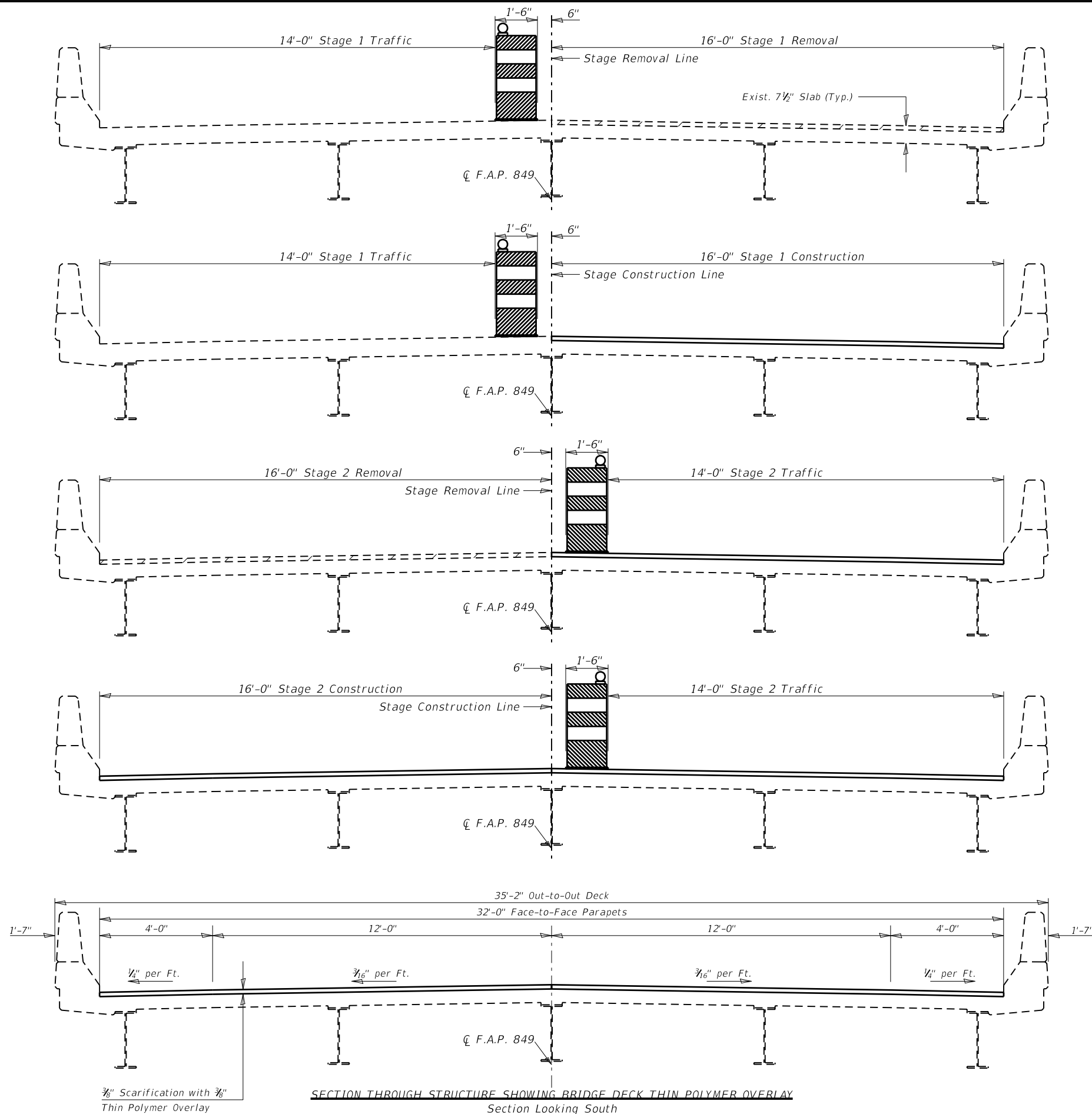
**STATE OF ILLINOIS  
DEPARTMENT OF TRANSPORTATION**

**SN 033-0012  
GENERAL PLAN AND ELEVATION**

SCALE: \_\_\_\_\_ SHEET \_\_\_\_ OF \_\_\_\_ SHEETS STA. \_\_\_\_\_ TO STA. \_\_\_\_\_

F.A.P. RTE.	SECTION	COUNTY	TOTAL SHEETS	SHEET NO.
849	D9 BRIDGE OVERLAY 2021-1	*	17	16
ILLINOIS FED. AID PROJECT			CONTRACT NO. 78804	





Concrete Bridge Deck Scarification  $\frac{3}{8}$ "

**BRIDGE DECK POLYMER OVERLAY  
 IL 142 OVER MIDDLE CREEK  
 FAP 849- D9 BRIDGE OVERLAY 2021-1  
 HAMILTON COUNTY  
 STATION 289+59.83**

MODEL Stage Construction Sheets  
 FILE NAME: P:\Highways\Illinois\DOT\Office\District 9\Projects\78804\CADD\Drawings\9\78804-Sheets.dgn

USER NAME = MORRISNR	DESIGNED - _____	REVISED - _____
DRAWN - _____	REVISED - _____	
PLOT SCALE = 4.0000' / in.	CHECKED - _____	REVISED - _____
PLOT DATE = 11/20/2020	DATE - _____	REVISED - _____

**STATE OF ILLINOIS  
 DEPARTMENT OF TRANSPORTATION**

**SN 033-0012  
 STAGING DETAILS**

SCALE: \_\_\_\_\_ SHEET \_\_\_\_ OF \_\_\_\_ SHEETS STA. \_\_\_\_\_ TO STA. \_\_\_\_\_

F.A.P. RTE.	SECTION	COUNTY	TOTAL SHEETS	SHEET NO.
849	D9 BRIDGE OVERLAY 2021-1	*	17	17
CONTRACT NO. 78804			ILLINOIS FED. AID PROJECT	