

STATE OF ILLINOIS
DEPARTMENT OF TRANSPORTATION

F.A.P. RTE	SECTION	COUNTY	TOTAL SHEETS	SHEET NO.
322	20 RS-4 (21, 22) RS-2	FAYETTE	22	1
		ILLINOIS	CONTRACT NO. 74944	

FOR INDEX OF SHEETS, SEE SHEET NO. 2

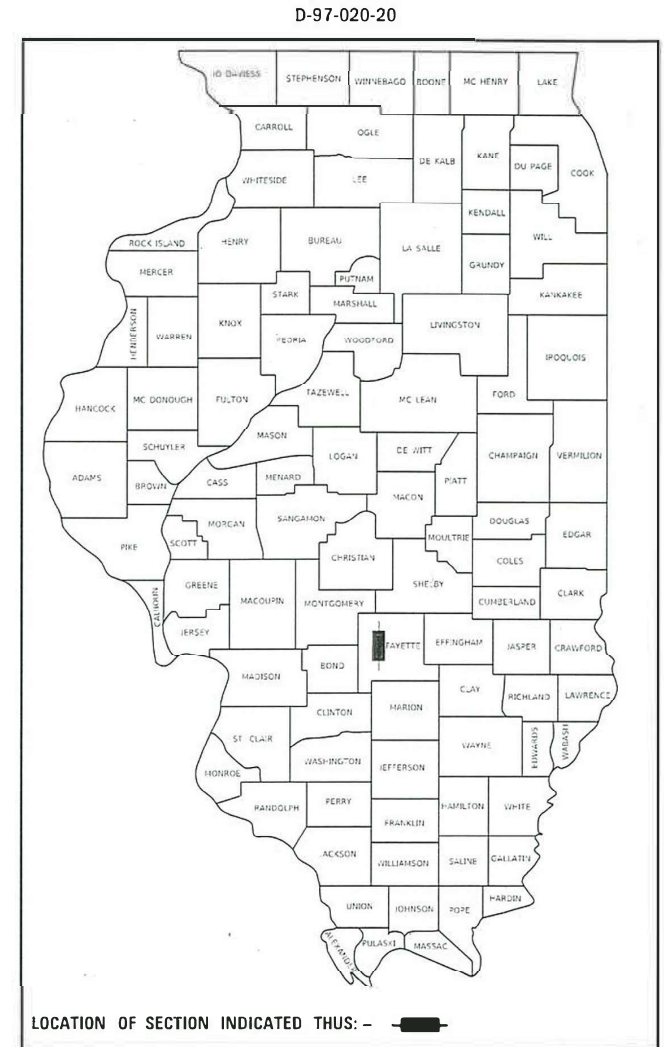
STATION EQUATIONS

STA 4 + 00.00 (BK) =	STA 65 + 02.98 (AH)
STA 85 + 26.78 (BK) =	STA 84 + 93.20 (AH)
STA 91 + 06.53 (BK) =	STA 91 + 06.80 (AH)
STA 97 + 88.40 (BK) =	STA 97 + 88.50 (AH)
STA 123 + 49.85 (BK) =	STA 123 + 50.00 (AH)
STA 143 + 49.98 (BK) =	STA 143 + 50.00 (AH)
STA 199 + 87.00 (BK) =	STA 200 + 00.00 (AH)
STA 210 + 30.23 (BK) =	STA 210 + 34.90 (AH)
STA 244 + 14.81 (BK) =	STA 244 + 19.40 (AH)
STA 265 + 00.00 (BK) =	STA 265 + 06.65 (AH)
STA 284 + 12.47 (BK) =	STA 284 + 77.95 (AH)
STA 306 + 89.30 (BK) =	STA 306 + 89.80 (AH)
STA 313 + 00.00 (BK) =	STA 313 + 08.00 (AH)
STA 441 + 82.00 (BK) =	STA 442 + 46.10 (AH)
STA 498 + 55.38 (BK) =	STA 498 + 24.90 (AH)
STA 517 + 75.52 (BK) =	STA 517 + 89.70 (AH)

PROPOSED HIGHWAY PLANS

FAP ROUTE 322 (US 51)
SECTION 20 RS-4 (21, 22) RS-2
PROJECT NHPP-J3TP(142)
DESIGNED OVERLAY
FAYETTE COUNTY

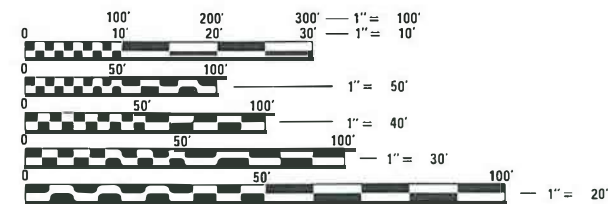
C-97-020-20



BRIDGE OMISSIONS

STA 69 + 14	TO STA 70 + 86
STA 200 + 10	TO STA 200 + 36
STA 479 + 42	TO STA 481 + 70

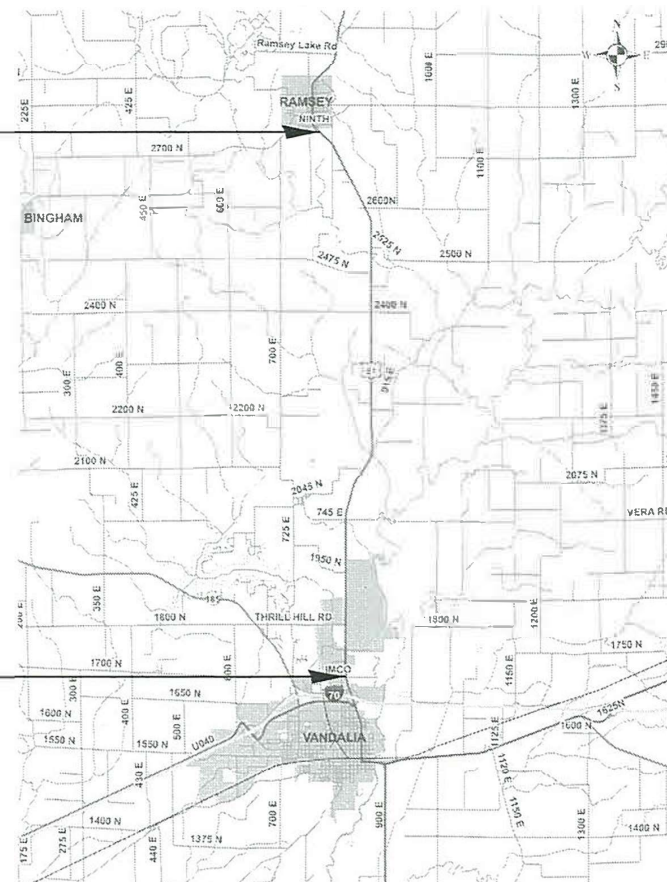
ADT (2019) = 3700



FULL SIZE PLANS HAVE BEEN PREPARED USING STANDARD ENGINEERING SCALES. REDUCED SIZED PLANS WILL NOT CONFORM TO STANDARD SCALES. IN MAKING MEASUREMENTS ON REDUCED PLANS, THE ABOVE SCALES MAY BE USED.

J.U.L.I.E.
JOINT UTILITY LOCATION INFORMATION FOR EXCAVATORS
1-800-892-0123
OR 811

PROJECT ENDS
STA 619 + 85



PROJECT BEGINS
STA 27 + 65

PROJECT ENGINEER BRIAN LEWIS
PROJECT MANAGER JESSICA HILLE

CONTRACT NO. 74944

GROSS LENGTH = 57729.37 FT. = 10.934 MILE
NET LENGTH = 57303.37 FT. = 10.853 MILE

STATE OF ILLINOIS
DEPARTMENT OF TRANSPORTATION

SUBMITTED DECEMBER 16 20

Jeffrey P. Myrland
REGIONAL ENGINEER

January 29, 2021

Scott A. Etk
ENGINEER OF DESIGN AND ENVIRONMENT

January 29, 2021

James J. [Signature]
DIRECTOR OF HIGHWAYS PROJECT IMPLEMENTATION

PRINTED BY THE AUTHORITY
OF THE STATE OF ILLINOIS

GENERAL NOTES

THE PROPOSED PROJECT IS LOCATED ON US 51 FROM 0.2 MILES SOUTH OF 9TH STREET IN RAMSEY TO IMCO DRIVE IN VANDALIA.

THE WORK INCLUDED IN SECTION 20 RS-4 (21,22) RS-2 CONSISTS OF PATCHING, HMA SURFACE REMOVAL, HMA RESURFACING, SHOULDER RUMBLE STRIPS, AGGREGATE SHOULDERS, PAINT PAVEMENT MARKING, RAISED REFLECTIVE PAVEMENT MARKERS, PROTECTING AND RESETTING SURVEY MARKERS, AND OTHER NECESSARY WORK TO COMPLETE THE SECTION.

AGGREGATE FOR ENTRANCES IS INCLUDED IN THE QUANTITY FOR AGGREGATE SHOULDERS.

MATERIAL FOR AGGREGATE SHOULDERS TYPE B, SHALL BE CRUSHED STONE OR CRUSHED CONCRETE.

SHORT TERM PAVEMENT MARKING APPLIED TO ANY MILLED SURFACE SHALL BE PAINT AND THOSE APPLIED TO THE HMA COURSES SHALL BE TAPE.

QUANTITIES FOR PAINT PAVEMENT MARKING - LINE 4" CONSISTS OF 113,820 FEET OF YELLOW AND 14,440 FEET OF WHITE.

THE FOLLOWING MIXTURE REQUIREMENTS ARE APPLICABLE FOR THIS PROJECT:

APPLICATION	AC/PG	DESIGN AIR VOIDS	MIXTURE COMPOSITION	FRICTION AGGREGATE	QUALITY MANAGEMENT
BINDER COURSE	PG 64-22	4.0% @Ndesign=70	IL - 9.5FG	N/A	PPF
SURFACE COURSE	PG 64-22	4.0% @Ndesign=70	IL - 9.5	MIXTURE C	PPF
INCIDENTAL SURFACE	PG 64-22	4.0% @Ndesign=70	IL - 9.5	MIXTURE C	QC/OA
CLASS D PATCHING	PG 64-22	4.0% @Ndesign=70	IL - 19.0	N/A	QC/OA

THE FOLLOWING RATES OF APPLICATION HAVE BEEN USED IN CALCULATING PLAN QUANTITIES:

HOT MIX ASPHALT	112 LB/SQ YD/INCH
GRANULAR MATERIAL	2.05 TONS/CU YD

INDEX OF SHEETS

SHEET NO.	ITEM
1	COVER SHEET
2	GENERAL NOTES & INDEX OF SHEETS
3-4	SUMMARY OF QUANTITIES
5	TYPICAL SECTIONS
6-7	SCHEDULE OF QUANTITIES
8	ENTRANCE SCHEDULE
9-19	PLAN SHEETS
20-22	DETAILS

THE FOLLOWING STANDARDS ARE A PART OF THESE PLANS AND ARE INCLUDED FOLLOWING THE LAST NUMBERED SHEET OF THE PLANS.

- 406201-01 MAILBOX TURNOUT
- 442201-03 CLASS C AND D PATCHES
- 642006-01 SHOULDER RUMBLE STRIPS, 8 IN.
- 667101-02 PERMANENT SURVEY MARKERS
- 701001-02 OFF-ROAD OPERATIONS, 2L, 2W, MORE THAN 15' AWAY
- 701006-05 OFF-ROAD OPERATIONS, 2L, 2W, 15' TO 24" FROM PAVEMENT EDGE
- 701201-05 LANE CLOSURE, 2L, 2W, DAY ONLY, FOR SPEEDS \geq 45 MPH
- 701301-04 LANE CLOSURE, 2L, 2W, SHORT TIME OPERATIONS
- 701306-04 LANE CLOSURE, 2L, 2W, SLOW MOVING OPERATIONS DAY ONLY, FOR SPEEDS \geq 45 MPH
- 701311-03 LANE CLOSURE, 2L, 2W, MOVING OPERATIONS - DAY ONLY
- 701901-08 TRAFFIC CONTROL DEVICES
- 780001-05 TYPICAL PAVEMENT MARKINGS
- 781001-04 TYPICAL APPLICATIONS RAISED REFLECTIVE PAVEMENT MARKERS

MODEL: Default
FILE: h:\mhc\p\pub\haronom.dwg
C:\ProgramData\Autodesk\LT2011\CADData\CADshcnotes\1774944-shcgenotes.dgn

USER NAME = steffemk	DESIGNED -	REVISED -
	DRAWN -	REVISED -
PLOT SCALE = 100.0000' / in.	CHECKED -	REVISED -
PLOT DATE = 12/17/2020	DATE -	REVISED -

**STATE OF ILLINOIS
DEPARTMENT OF TRANSPORTATION**

INDEX OF SHEETS AND GENERAL NOTES

SCALE:	SHEET	OF	SHEETS	STA.	TO	STA.
--------	-------	----	--------	------	----	------

F.A.P. RTE.	SECTION	COUNTY	TOTAL SHEETS	SHEET NO.
322	20 RS-4 (21, 22) RS-2	FAYETTE	22	2
CONTRACT NO. 74944				
ILLINOIS FED. AID PROJECT				

80% FED
20% STATE

80% FED
20% STATE

SUMMARY OF QUANTITIES			TOTAL QUANTITIES	CONSTRUCTION TYPE CODE	
CODE NO	ITEM	UNIT		0005 URBAN	0005 RURAL
40600290	BITUMINOUS MATERIALS (TACK COAT)	POUND	120754	33651	87103
40600990	TEMPORARY RAMP	SO YD	101	64	37
40602970	HOT-MIX ASPHALT BINDER COURSE, IL-9.5FG, N70	TON	15561	4650	10911
40604052	HOT-MIX ASPHALT SURFACE COURSE, IL-9.5, MIX "C", N70	TON	19536	5448	14088
40800050	INCIDENTAL HOT-MIX ASPHALT SURFACING	TON	464	167	297
44000155	HOT-MIX ASPHALT SURFACE REMOVAL, 1 1/2"	SO YD	178877	49846	129031
44201811	CLASS D PATCHES, TYPE I, 14 INCH	SO YD	923	271	652
44201815	CLASS D PATCHES, TYPE II, 14 INCH	SO YD	400	168	232
44201819	CLASS D PATCHES, TYPE III, 14 INCH	SO YD	72	55	17
44201821	CLASS D PATCHES, TYPE IV, 14 INCH	SO YD	496	328	168
48101200	AGGREGATE SHOULDERS, TYPE B	TON	7543	2072	5471
64200108	SHOULDER RUMBLE STRIPS, 8 INCH	FOOT	106219	28588	77631
66700205	PERMANENT SURVEY MARKERS, TYPE I	EACH	31	12	19
67000400	ENGINEER'S FIELD OFFICE, TYPE A	CAL MO	7	2	5
66700305	PERMANENT SURVEY MARKERS, TYPE II	EACH	6	1	5
67000600	ENGINEER'S FIELD LABORATORY	CAL MO	7	2	5

SUMMARY OF QUANTITIES			TOTAL QUANTITIES	CONSTRUCTION TYPE CODE	
CODE NO	ITEM	UNIT		0005 URBAN	0005 RURAL
67100100	MOBILIZATION	L SUM	1	0.28	0.72
70100450	TRAFFIC CONTROL AND PROTECTION, STANDARD 701201	L SUM	1	0.28	0.72
70100460	TRAFFIC CONTROL AND PROTECTION, STANDARD 701306	L SUM	1	0.28	0.72
70107025	CHANGEABLE MESSAGE SIGN	CAL DA	28	14	14
70300100	SHORT TERM PAVEMENT MARKING	FOOT	17328	4814	12514
70300150	SHORT TERM PAVEMENT MARKING REMOVAL	SO FT	1933	538	1395
70300220	TEMPORARY PAVEMENT MARKING - LINE 4"	FOOT	128260	35675	92585
* 78001110	PAINT PAVEMENT MARKING - LINE 4"	FOOT	128260	35675	92585
* 78100100	RAISED REFLECTIVE PAVEMENT MARKER	EACH	722	201	521
78300200	RAISED REFLECTIVE PAVEMENT MARKER REMOVAL	EACH	722	201	521
X0326440	SURFACE REMOVAL, VARIABLE DEPTH (SPECIAL)	SO YD	4454	1620	2834
* Z0008758	AERIAL SPEED CHECK MARKING	FOOT	24	0	24
Z0033700	LONGITUDINAL JOINT SEALANT	FOOT	57312	15839	41473

* SPECIALTY ITEM

REV. - MS

MODEL: Default
 FILE: M:\GIS\p\highway\com.dta\illinois.gov\PRWDOT\Documents\DOT_Offices\District_7\Projects\7494\CADData\CAD\sheet\7494-ph-S00.dgn

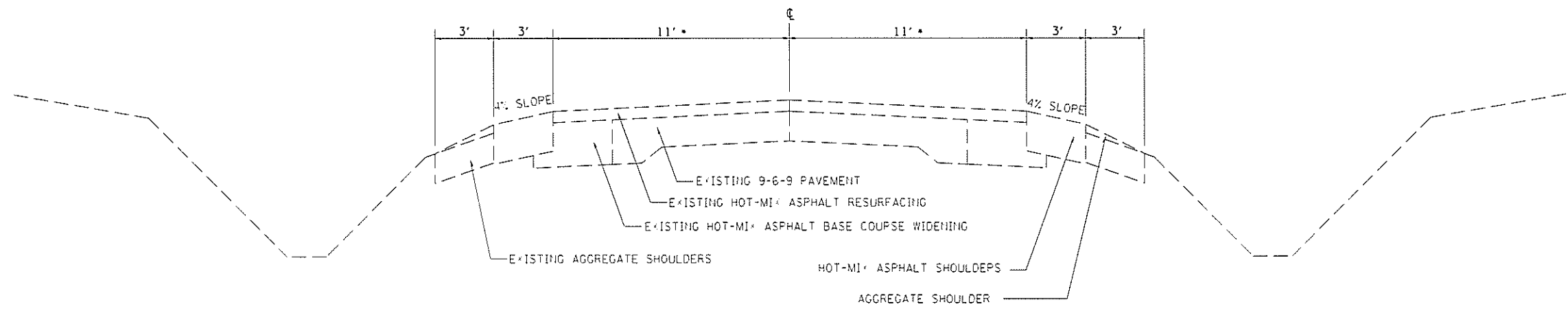
USER NAME = steffennk	DESIGNED -	REVISED -
	DRAWN -	REVISED -
PLOT SCALE = 100.0000' / in.	CHECKED -	REVISED -
PLOT DATE = 12/17/2020	DATE -	REVISED -

STATE OF ILLINOIS
DEPARTMENT OF TRANSPORTATION

SUMMARY OF QUANTITIES

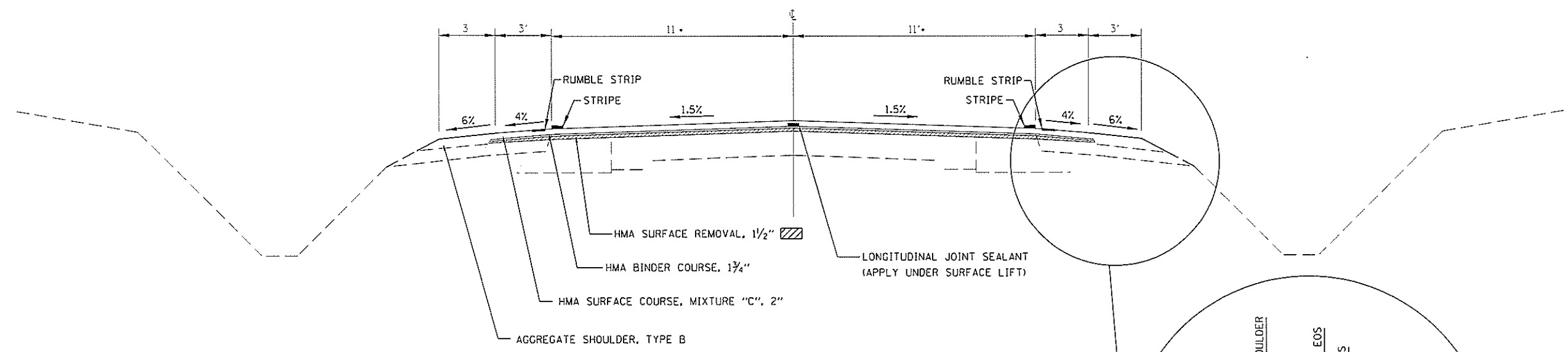
SCALE: SHEET OF SHEETS STA. TO STA.

F.A.P. RTE.	SECTION	COUNTY	TOTAL SHEETS	SHEET NO.
322	20 RS-4 (21, 22) RS-2	FAYETTE	22	3
CONTRACT NO. 74944				
ILLINOIS FED. AID PROJECT				



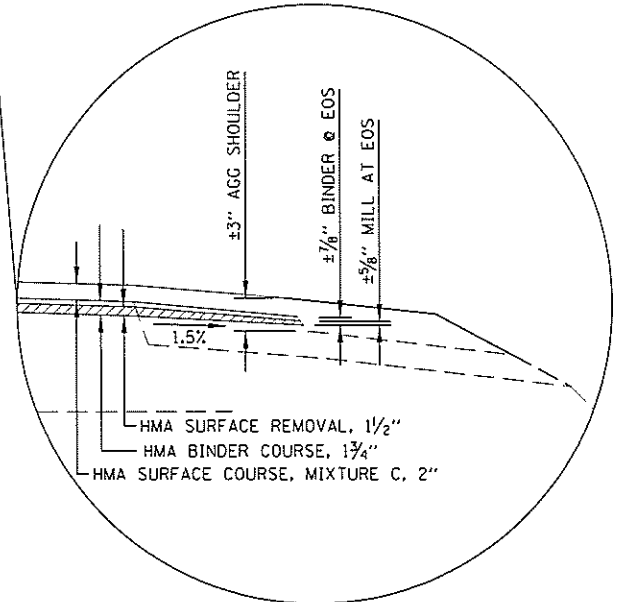
EXISTING

• NOTE: LANE WIDTH IS 12' FROM STA 27+65 TO STA 65+03. LANE WIDTH TAPERES FROM 12 TO 11' FROM STA 65+03 TO STA 69+14.



PROPOSED

STA 27+65 TO STA 69+14
 STA 70+86 TO STA 200+10
 STA 200+36 TO STA 479+42
 STA 481+70 TO STA 619+85



MODFL D:\cadd\...
 FILE NAME: ...
 PROJECT: ...
 DATE: ...

USER NAME = mllj	DESIGNED -	REVISED -
PLOT SCALE = 100 0000 / in	DRAWN -	REVISED -
PLOT DATE = 1/29/2021	CHECKED -	REVISED -
	DATE -	REVISED -

STATE OF ILLINOIS
DEPARTMENT OF TRANSPORTATION

TYPICAL SECTIONS

SCALE: SHEET OF SHEETS STA. TO STA.

F.A.P. RTE	SECTION	COUNTY	TOTAL SHEETS	SHEET NO.
322	20 RS-4 (21, 22) RS-2	FAYETTE	22	5
ILLINOIS FED. AID PROJECT				

MILLING & PAVING

BINDER COURSE

PAVEMENT MARKING

STATION	TO	STATION	LENGTH FOOT	COMBINED WIDTH OF MAINLINES FOOT	COMBINED WIDTH OF SHOULDER FOOT	AREA SQ FT	HOT-MIX ASPHALT SURFACE REMOVAL, 1 1/2" SQ YD	BITUMINOUS MATERIAL (TACK COAT) POUNDS	LONGITUDINAL JOINT SEALANT FOOT	HOT-MIX ASPHALT SURFACE COURSE, MIX "C", N70 TON
27+65.00		27+20.00	45	24	6	1350	150	102	45	17
24+20.00		4+00.00	2320	24	6	69600	7734	5220	2320	846
4+00.00 BK = 65+02.98 AH										
65+02.98		68+69.00	367	23	6	10615	1183	800	367	130
68+69.00		69+14.00	45	22	6	1260	140	95	45	16
69+14.00		70+86.00	BRIDGE OMISSION							
70+86.00		71+31.00	45	22	6	1260	140	95	45	16
71+31.00		85+26.78	1396	22	6	39082	4344	2933	1396	474
85+26.78 BK = 84+93.20 AH										
84+93.20		91+06.53	614	22	6	17173	1911	1290	614	209
91+06.53 BK = 91+06.80 AH										
91+06.80		97+88.40	682	22	6	19085	2122	1433	682	232
97+88.40 BK = 97+88.50 AH										
97+88.50		123+49.85	2562	22	6	71718	7971	5381	2562	870
123+49.85 BK = 123+50.00 AH										
123+50.00		143+49.98	2000	22	6	55999	6223	4200	2000	679
143+49.98 BK = 143+50.00 AH										
143+50.00		199+52.00	5603	22	6	156856	17429	11765	5603	1903
199+52.00		199+87.00	35	22	6	980	109	74	35	12
199+87.00 BK = 200+00.00 AH										
200+00.00		200+10.00	10	22	6	280	32	21	10	4
200+10.00		200+36.00	BRIDGE OMISSION							
200+36.00		200+81.00	45	22	6	1260	140	95	45	16
200+81.00		201+51.00	70	22	6	1960	218	147	70	24
RURAL										
201+51.00		210+30.23	880	22	6	24618	2738	1848	880	299
210+30.23 BK = 210+34.90 AH										
210+34.90		244+14.81	3380	22	6	94637	10516	7098	3380	1148
244+14.81 BK = 244+19.40 AH										
244+19.40		265+00.00	2081	22	6	58257	6475	4371	2081	707
265+00.00 BK = 265+06.65 AH										
265+06.65		284+12.47	1906	22	6	24697	5930	4004	1906	648
284+12.47 BK = 284+77.95 AH										
284+77.95		306+89.30	2212	22	6	61918	6882	4646	2212	751
306+89.30 BK = 306+89.80 AH										
306+89.80		313+00.00	611	22	6	17086	1901	1284	611	208
313+00.00 BK = 313+08.00 AH										
313+08.00		441+82.00	12874	22	6	360472	40053	27036	12874	4371
441+82.00 BK = 442+46.10 AH										
442+46.10		478+97.00	3651	22	6	102225	11359	7668	3651	1240
478+97.00		479+42.00	45	22	6	1260	140	95	45	16
479+42.00		481+70.00	BRIDGE OMISSION							
481+70.00		482+15.00	45	22	6	1260	140	95	45	16
482+15.00		498+55.38	1641	22	6	45931	5106	3447	1641	558
498+55.38 BK = 498+24.90 AH										
498+24.90		517+75.52	1951	22	6	54617	6070	4098	1951	663
517+75.52 BK = 517+89.70 AH										
517+89.70		619+40.00	10151	22	6	284208	31581	21318	10151	3447
619+40.00		619+85.00	45	22	6	1260	140	95	45	16
URBAN TOTAL			15839			448478	49846	33651	15839	5448
RURAL TOTAL			41473			1159638	129031	87103	41473	14088
TOTAL			57312			1608116	178877	120754	57312	19536

STATION	TO	STATION	LENGTH FOOT	COMBINED WIDTH OF MAINLANES FOOT	COMBINED WIDTH OF SHOULDER FOOT	HOT-MIX ASPHALT BINDER COURSE, IL-9.5FG, N70 TONS
27+65.00		27+30.00	35	24	6	8
27+30.00		4+00.00	2330	24	6	730
4+00.00 BK = 65+02.98 AH						
62+02.98		68+79.00	376	23	6	114
68+79.00		69+14.00	35	22	6	7
69+14.00		70+86.00	BRIDGE OMISSION			
70+86.00		71+21.00	35	22	6	7
71+21.00		85+26.78	1406	22	6	410
85+26.78 BK = 84+93.20 AH						
84+93.20		91+06.53	613	22	6	179
91+06.53 BK = 91+06.80 AH						
91+06.80		97+88.40	682	22	6	199
97+88.40 BK = 97+88.50 AH						
97+88.50		123+49.85	2561	22	6	747
123+49.85 BK = 123+50.00 AH						
123+50.00		143+49.98	2000	22	6	583
143+49.98 BK = 143+50.00 AH						
143+50.00		199+62.00	5612	22	6	1636
199+62.00		199+87.00	25	22	6	5
199+87.00 BK = 200+00.00 AH						
200+00.00		200+10.00	10	22	6	2
200+10.00		200+36.00	BRIDGE OMISSION			
200+36.00		200+71.00	35	22	6	7
200+71.00		201+51.00	80	22	6	16
RURAL						
201+51.00		210+30.23	879	22	6	256
210+30.23 BK = 210+34.90 AH						
210+34.90		244+14.81	3380	22	6	985
244+14.81 BK = 244+19.40 AH						
244+19.40		265+00.00	2081	22	6	606
265+00.00 BK = 265+06.65 AH						
265+06.65		273+98.67	892	22	6	260
273+98.67		274+33.67	35	22	6	7
274+33.67		274+86.33	BRIDGE OMISSION			
274+86.33		275+21.33	35	22	6	7
275+21.33		284+12.47	891	22	6	260
284+12.47 BK = 284+77.95 AH						
284+77.95		306+89.30	2211	22	6	645
306+89.30 BK = 306+89.80 AH						
306+89.80		313+00.00	610	22	6	178
313+00.00 BK = 313+08.00 AH						
313+08.00		441+82.00	12874	22	6	3752
441+82.00 BK = 442+46.10 AH						
442+46.10		479+07.00	3661	22	6	1067
479+07.00		479+42.00	35	22	6	7
479+42.00		481+70.00	BRIDGE OMISSION			
481+70.00		482+05.00	35	22	6	7
482+05.00		498+55.38	1650	22	6	481
498+55.38 BK = 498+24.90 AH						
498+24.90		517+75.52	1951	22	6	568
517+75.52 BK = 517+89.70 AH						
517+89.70		619+50.00	10160	22	6	2092
619+50.00		619+85.00	35	22	6	7
URBAN TOTAL			15835			4650
RURAL TOTAL			41468			11207
TOTAL			57303			15857

STATION	TO	STATION	LENGTH FOOT	SHORT TERM PAVEMENT MARKING (YELLOW) FOOT	SHORT TERM PAVEMENT MARKING REMOVAL SQ FT	AERIAL SPEED CHECK MARKING FOOT	PAINT PAVEMENT MARKING - LINE 4" (WHITE) FOOT	PAINT PAVEMENT MARKING - LINE 4" (YELLOW) FOOT	TEMPORARY PAVEMENT MARKING - LINE 4" (WHITE) FOOT	TEMPORARY PAVEMENT MARKING - LINE 4" (YELLOW) FOOT	RAISED REFLECTIVE PAVEMENT MARKING REMOVAL EACH	RAISED REFLECTIVE PAVEMENT MARKING (2 WAY AMBER) EACH
27+65.00		4+00.00	2365	710	79	0	4509	592	4509	592	30	30
4+00.00 BK = 65+02.98 AH												
65+02.98		85+26.78	2024	608	68	0	4048	506	4048	506	25	25
85+26.78 BK = 84+93.20 AH												
84+93.20		91+06.53	613	184	21	0	1227	154	1227	154	8	8
91+06.53 BK = 91+06.80 AH												
91+06.80		97+88.40	682	205	23	0	1242	171	1242	171	9	9
97+88.40 BK = 97+88.50 AH												
97+88.50		123+49.85	2561	769	86	0	5123	641	5123	641	32	32
123+49.85 BK = 123+50.00 AH												
123+50.00		143+49.98	2000	600	67	0	4000	500	4000	500	25	25
143+49.98 BK = 143+50.00 AH												
143+50.00		199+87.00	5637	1692	188	0	11212	1410	11212	1410	70	70
199+87.00 BK = 200+00.00 AH												
200+00.00		201+51.00	151	46	6	0	302	38	302	38	2	2
RURAL												
201+51.00		210+30.23	879	264	30	0	1678	220	1678	220	11	11
210+30.23 BK = 210+34.90 AH												
210+34.90		244+14.81	3380	1014	113	0	6760	845	6760	845	42	42
244+14.81 BK = 244+19.40 AH												
244+19.40		265+00.00	2081	625	70	0	4080	521	4080	521	26	26
265+00.00 BK = 265+06.65 AH												
265+06.65		284+12.47	1906	572	64	0	3742	477	3742	477	24	24
284+12.47 BK = 284+77.95 AH												
284+77.95		306+89.30	2211	664	74	0	4423	553	4423	553	28	28
306+89.30 BK = 306+89.80 AH												
306+89.80		313+00.00	610	184	21	0	1221	153	1221	153	8	8
313+00.00 BK = 313+08.00 AH												
313+08.00		441+82.00	12874	3863	430	24	25419	3219	25419	3219	161	161
441+82.00 BK = 442+46.10 AH												
442+46.10		498+55.38	5609	1683	187	0	10883	1403	10883	1403	70	70
498+55.38 BK = 498+24.90 AH												
498+24.90		517+75.52	1951	586	66	0	3902	488	3902	488	24	24
517+75.52 BK = 517+89.70 AH												
517+89.70		619+85.00	10195	3059	340	0	20049	2549	20049	2549	127	127
URBAN TOTAL			16033	4814	538	0	31663	4012	31663	4012	201	201
RURAL TOTAL			41696	12514	1395	24	82157	10428	82157	10428	521	521
TOTAL			57729	17328	1933	24	113820	14440	113820	14440	722	722

MO:\PI\Drawings\DOT Office\Drawings\Projects\7494\CD\Drawings\7494.dwg
 FILE NAME: 7494.dwg
 PLOT DATE: 1/29/2021

USER NAME = hllqj	DESIGNED -	REVISED -
DRAWN -	REVISOR -	
PLOT SCALE = 100 0000 / in	CHECKED -	REVISED -
PLOT DATE = 1/29/20		

SIDE	STATION	TYPE	SURFACE REMOVAL VARIABLE DEPTH (SPECIAL)		INCIDENTAL HOT-MIX ASPHALT SURFACING	AGGREGATE SHOULDER, TYPE B	LENGTH FOOT
			SO YD	TON			
URBAN							
RT	26+46	PRA	0	0		23.5	
LT	26+27	PRA	105	12	0		
RT	11+47	FE	0	0	5.3		
LT	10+63	PRA	106	12	0		
RT	87+65	FE	0	0	2.9		
RT	90+07	FE	0	0	3.4		
RT	95+08	PRA	349	37	0	40	
RT	121+85	PE	57	6	0	11	
LT	122+06	PE	78	9	0		
LT	129+41	MBT2	0	0	4.4		
LT	129+65	PE	0	0	1.8		
RT	131+31	CE	62	7	0	12	
LT	131+85	MBT1	0	0	4.4		
LT	131+87	PE	0	0	1.1		
LT	134+48	MBT2	0	0	4.4		
LT	134+80	PE	0	0	3.0		
RT	134+98	CE	148	16	0	17	
LT	136+31	MBT2	0	0	4.4		
LT	136+47	PE	0	0	1.3		
LT	137+38	MBT2	0	0	4.4		
LT	137+57	PE	0	0	1.5		
LT	140+07	MBT2	0	0	4.4		
LT	140+22	PE	0	0	1.1		
RT	140+69	CE	80	9	0	13	
LT	144+58	PE	51	6	0		
RT	148+17	CE	43	5	0		
LT	148+47	PRA	196	21	0	37	
LT	149+73	PE	35	4	0		
LT	150+79	CE	47	5	0		
RT	151+44	MBT1	0	0	4.4		
RT	152+56	CE	73	8	0		
RT	159+16	FE	0	0	1.2		
LT	159+33	PE	50	6	0		
LT	161+62	FE	0	0	2.1		
RT	164+85	CE	47	5	0		
RT	164+96	PE	0	0	1.5		
LT	165+01	MBT1	0	0	4.4		
LT	167+08	PE	33	4	0		
LT	168+99	PE	0	0	1.1		

SIDE	STATION	TYPE	SURFACE REMOVAL VARIABLE DEPTH (SPECIAL)		INCIDENTAL HOT-MIX ASPHALT SURFACING	AGGREGATE SHOULDER, TYPE B	LENGTH FOOT
			SO YD	TON			
RT	169+01	MBT1	0	0	4.4		
LT	171+25	PE	31	4	0		
LT	173+26	PE/CE	0	0	1.5		
LT	173+82	PE/CE	0	0	1.3		
RT	174+88	MBT1	0	0	4.4		
LT	175+01	PE	0	0	1.1		
RT	175+60	MBT1	0	0	4.4		
LT	175+62	PE	0	0	1.1		
LT	177+64	PE	29	4	0		
LT	179+84	CE	0	0	2.2		
RT	180+50	MBT1	0	0	4.4		
LT	180+54	CE	0	0	1.9		
LT	188+20	CE	0	0	3.4		
RT	189+50	MBT2	0	0	4.0		
RT	189+74	FE	0	0	1.5		
LT	192+45	PE	0	0	1.5		
RURAL							
LT	201+51	PRA	27	3	0		
RT	201+51	PRA	49	6	0	11	
LT	214+73	FE	0	0	1.2		
RT	229+00	FE	0	0	13.3		
LT	229+53	CE	0	0	14.4		
RT	244+89	FE	0	0	1.9		
LT	256+21	PRA	136	15	0	20	
RT	261+90	FE	0	0	1.9		
LT	262+05	MBT2	0	0	4.0		
LT	262+35	PE	0	0	3.1		
RT	268+84	PRA	0	0	5.1		
RT	280+00	PRA	269	29	0	55	
LT	282+18	FE	0	0	2.1		
RT	283+68	PE	0	0	1.1		
LT	283+75	FE	0	0	2.4		
LT	295+70	MBT1	0	0	4.4		
LT	297+78	PE	0	0	2.5		
RT	304+12	PE	0	0	2.9		
RT	317+20	PE	0	0	1.9		
LT	317+20	PE	0	0	1.9		
LT	317+42	MBT2	0	0	3.4		
RT	320+53	PRA	46	5	0		
LT	323+88	MBT2	0	0	3.4		

SIDE	STATION	TYPE	SURFACE REMOVAL VARIABLE DEPTH (SPECIAL)		INCIDENTAL HOT-MIX ASPHALT SURFACING	AGGREGATE SHOULDER, TYPE B	LENGTH FOOT
			SO YD	TON			
LT	324+10	PE	0	0	1.9		
LT	327+09	PRA	48	6	0		
RT	327+28	PE	37	4	0		
RT	327+45	MBT2	0	0	3.4		
LT	329+59	CE	0	0	3.3		
LT	335+60	MBT2	0	0	3.4		
LT	335+84	PE	0	0	2.1		
LT	338+11	PE	0	0	1.7		
LT	338+31	MBT2	0	0	3.4		
RT	339+01	PE	0	0	2.4		
RT	339+20	MBT2	0	0	3.4		
RT	340+48	CE	0	0	3.0		
RT	340+76	MBT2	0	0	3.4		
RT	345+71	FE	0	0	1.2		
LT	348+00	FE	0	0	2.7		
RT	356+06	PE	0	0	1.5		
RT	356+19	MBT2	0	0	3.4		
RT	360+36	PE	0	0	1.5		
RT	360+52	MBT2	0	0	3.4		
RT	362+16	PE	0	0	1.7		
RT	362+29	MBT2	0	0	3.4		
RT	364+24	PE	0	0	1.9		
RT	367+11	PRA	52	6	0		
LT	367+17	PRA	32	4	0		
RT	380+13	FE	0	0	1.7		
LT	380+24	PE	43	5	0		
LT	380+49	MBT2	0	0	3.9		
RT	388+08	PE	0	0	2.2		
LT	388+24	MBT1	0	0	4.4		
RT	399+65	FE	0	0	1.5		
RT	418+35	PE	0	0	2.4		
LT	419+86	PRA	243	26	0	48	
RT	419+87	PRA	67	8	0	12	
RT	433+19	PE	0	0	2.3		
RT	446+89	PRA	168	18	0	35	
LT	447+10	FE	0	0	1.1		
LT	452+40	PRA	83	9	0		
RT	457+01	CE/PE	36	4	0		
RT	457+22	MBT2	0	0	3.8		
RT	459+87	CE	0	0	13.2		

SIDE	STATION	TYPE	SURFACE REMOVAL VARIABLE DEPTH (SPECIAL)		INCIDENTAL HOT-MIX ASPHALT SURFACING	AGGREGATE SHOULDER, TYPE B	LENGTH FOOT
			SO YD	TON			
LT	484+73	PRA	78	9	0		
RT	486+62	PRA	247	26	0	51	
LT	492+72	FE	0	0	4.4		
RT	498+34	PE	0	0	2.2		
LT	498+47	MBT1	0	0	4.4		
RT	514+10	PE	0	0	2.5		
LT	514+22	MBT2	0	0	4.4		
RT	519+07	PE	0	0	3.0		
LT	519+10	MBT1	0	0	4.4		
RT	525+25	PE	0	0	1.5		
LT	526+04	MBT1	0	0	4.4		
RT	526+05	PE	0	0	1.8		
RT	527+14	PE	0	0	1.5		
RT	527+60	PRA	174	19	0	38	
LT	527+91	PRA	196	21	0	47	
LT	529+54	FE	0	0	2.2		
RT	535+51	PE	0	0	3.6		
LT	535+56	MBT1	0	0	4.4		
RT	542+41	FE	0	0	1.2		
LT	542+83	PE	55	6	0		
LT	546+61	CE	0	0	3.3		
RT	551+08	PE	0	0	1.9		
LT	551+16	MBT1	0	0	4.4		
RT	552+25	PE	0	0	1.5		
LT	556+67	FE	0	0	1.0		
LT	557+56	PRA	51	6	0	11	
LT	557+84	MBT2	0	0	3.9		
RT	564+70	PE	42	5	0	11	
LT	564+70	FE	0	0	1.2		
LT	564+06	MBT2	0	0	4.4		
RT	570+05	PE	0	0	1.5		
RT	572+08	PE	0	0	1.5		
LT	572+32	PRA	212	23	0	50	
RT	576+36	FE	0	0	1.1		
LT	588+14	PE	0	0	1.1		
RT	588+42	CE	60	7	0		
LT	589+05	PE	0	0	2.8		
RT	591+66	PE	0	0	2.4		
LT	591+74	MBT1	0	0	3.4		
LT	592+55	PE	0	0	2.3		

SIDE	STATION	TYPE	SURFACE REMOVAL VARIABLE DEPTH (SPECIAL)		INCIDENTAL HOT-MIX ASPHALT SURFACING	AGGREGATE SHOULDER, TYPE B	LENGTH FOOT
			SO YD	TON			
RT	600+00	FE	0	0	1.5		
LT	600+93	PRA	163	18	0	37	
RT	601+75	PRA	138	15	0	31	
LT	602+38	PE	0	0	2.5		
LT	602+56	MBT2	0	0	3.4		
LT	613+40	CE/PE	38	4	0		
LT	613+87	MBT2	0	0	4.4		
RT	616+39	CE	44	5	0		
URBAN TOTAL			1620	180	123		
RURAL TOTAL			2834	312	254		
FINAL TOTAL			4454	492	377		

FE=FIELD ENTRANCE PRA - PUBLIC ROAD APPROACH
PE=PRIVATE ENTRANCE MBT - MAILBOX TURNOUT
CE=COMMERCIAL ENTRANCE

*THIS QUANTITY IS FOR THE AGGREGATE FIELD ENTRANCES

NOTE: LENGTH IS 10' UNLESS OTHERWISE NOTED

MODEL: Default
FILE: h:\mfc_p\pub\barroom.dwg
PROJECT: 74941\CADD\barroom.dwg
DATE: 12/17/2020

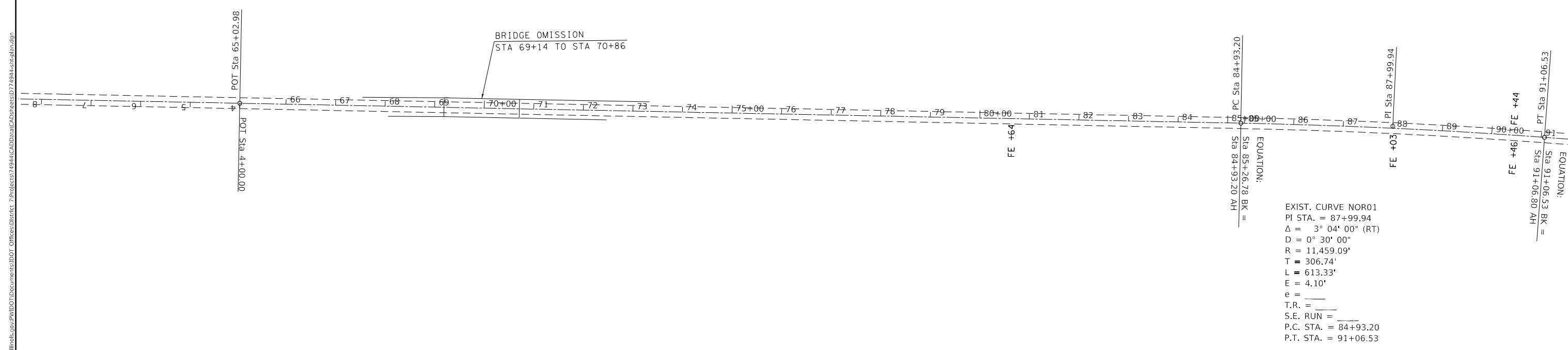
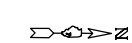
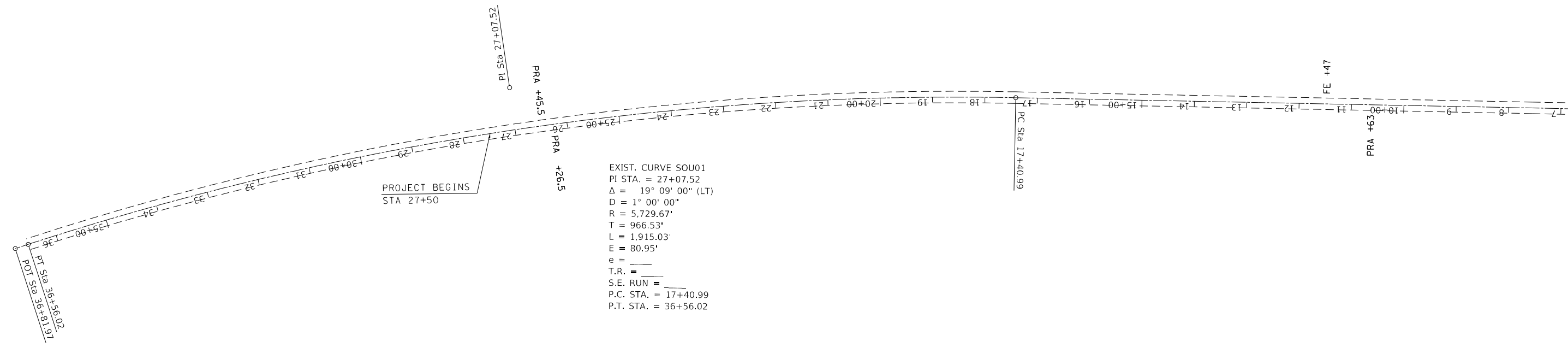
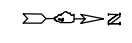
USER NAME = steffenmk	DESIGNED -	REVISED -
	DRAWN -	REVISED -
PLOT SCALE = 100.0000' / in.	CHECKED -	REVISED -
PLOT DATE = 12/17/2020	DATE -	REVISED -

STATE OF ILLINOIS
DEPARTMENT OF TRANSPORTATION

ENTRANCE SCHEDULE

SCALE: SHEET OF SHEETS STA. TO STA.

F.A.P. RTE.	SECTION	COUNTY	TOTAL SHEETS	SHEET NO.
322	20 RS-4 (21, 22) RS-2	FAYETTE	22	8
CONTRACT NO. 74944				
ILLINOIS FED. AID PROJECT				



EXIST. CURVE SOU01
 PI STA. = 27+07.52
 $\Delta = 19^\circ 09' 00''$ (LT)
 D = 1° 00' 00"
 R = 5,729.67'
 T = 966.53'
 L = 1,915.03'
 E = 80.95'
 e = ____
 T.R. = ____
 S.E. RUN = ____
 P.C. STA. = 17+40.99
 P.T. STA. = 36+56.02

EXIST. CURVE NOR01
 PI STA. = 87+99.94
 $\Delta = 3^\circ 04' 00''$ (RT)
 D = 0° 30' 00"
 R = 11,459.09'
 T = 306.74'
 L = 613.33'
 E = 4.10'
 e = ____
 T.R. = ____
 S.E. RUN = ____
 P.C. STA. = 84+93.20
 P.T. STA. = 91+06.53

MODEL: Default
 FILE: h:\m\c\p\suplanroom.d\illinois.gov\PIWIDOT\Documents\DOT_Offices\Illinet\7\Projects\74944\CAAD\Bdata\CAD\sheet\074944-shc-plan.dgn

USER NAME = steffenk	DESIGNED -	REVISED -
	DRAWN -	REVISED -
PLOT SCALE = 200.0000' / in.	CHECKED -	REVISED -
PLOT DATE = 12/17/2020	DATE -	REVISED -

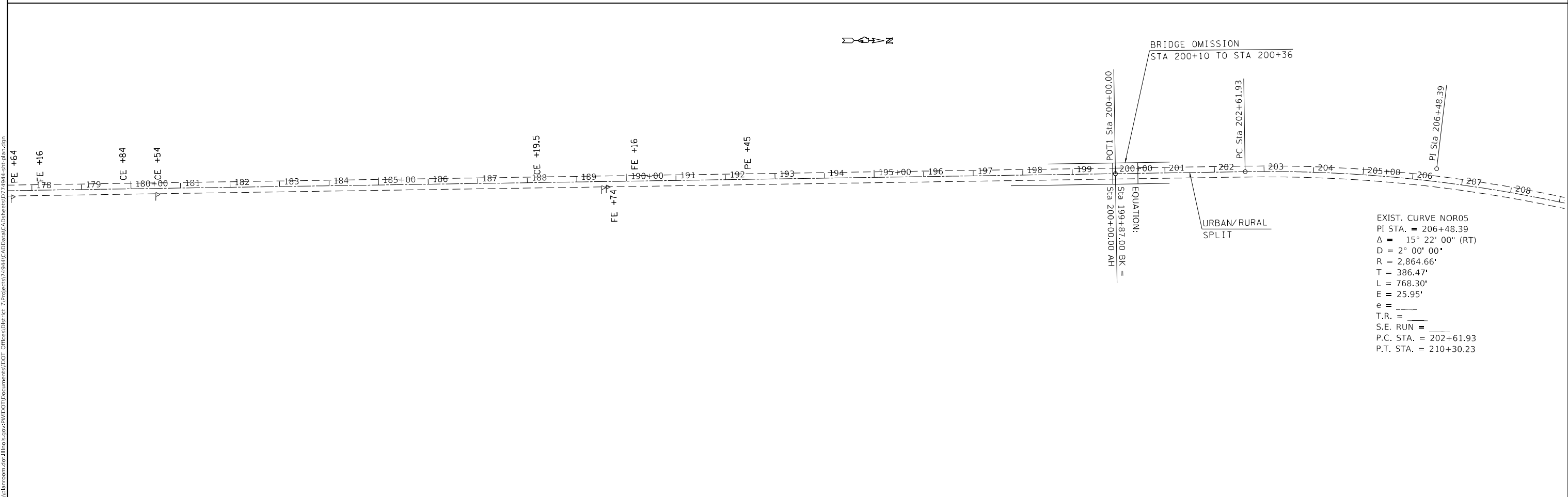
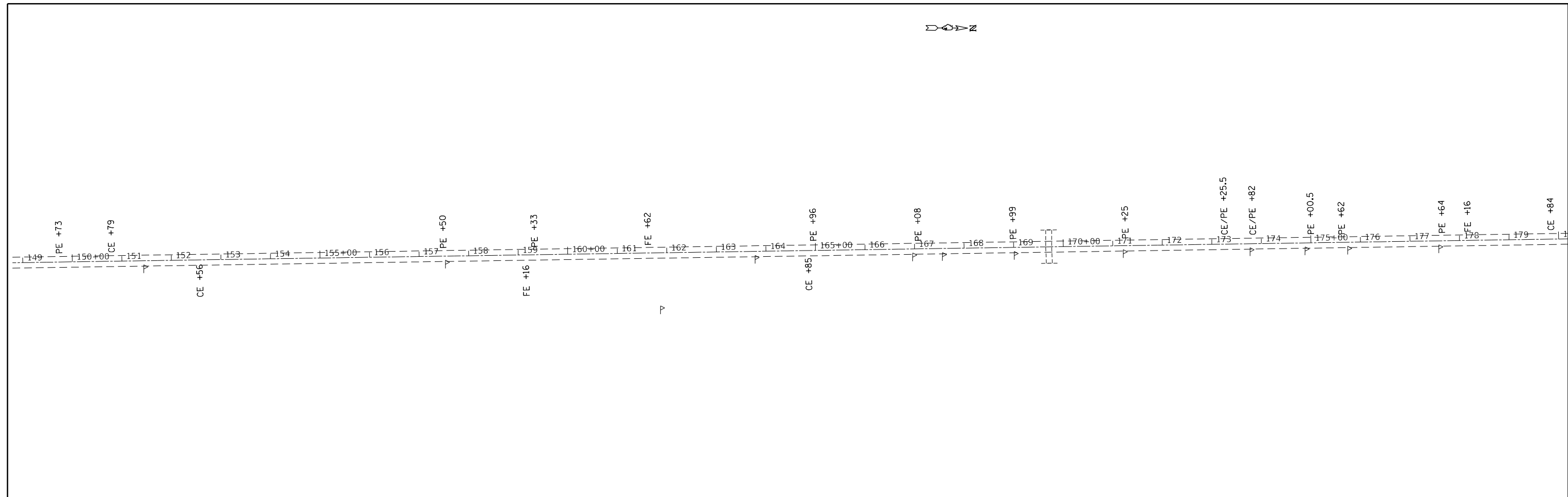
**STATE OF ILLINOIS
 DEPARTMENT OF TRANSPORTATION**

URBAN PLAN SHEET

SCALE: SHEET OF SHEETS STA. TO STA.

F.A.P. RTE.	SECTION	COUNTY	TOTAL SHEETS	SHEET NO.
322	20 RS-4 (21, 22) RS-2	FAYETTE	22	9
ILLINOIS FED. AID PROJECT			CONTRACT NO. 74944	

MODEL: Default
 FILE: h:\m\c\p\pub\barroom.dwg
 PROJECT: 74944\CADD\DATA\CADD\barroom.dwg
 PROJECT: 74944\CADD\DATA\CADD\barroom.dwg
 PROJECT: 74944\CADD\DATA\CADD\barroom.dwg



EXIST. CURVE NOR05
 PI STA. = 206+48.39
 $\Delta = 15^\circ 22' 00''$ (RT)
 $D = 2^\circ 00' 00''$
 $R = 2,864.66'$
 $T = 386.47'$
 $L = 768.30'$
 $E = 25.95'$
 $e =$
 $T.R. =$
 $S.E. RUN =$
 $P.C. STA. = 202+61.93$
 $P.T. STA. = 210+30.23$

USER NAME = steffenmk	DESIGNED -	REVISED -
	DRAWN -	REVISED -
PLOT SCALE = 200.0000' / in.	CHECKED -	REVISED -
PLOT DATE = 12/17/2020	DATE -	REVISED -

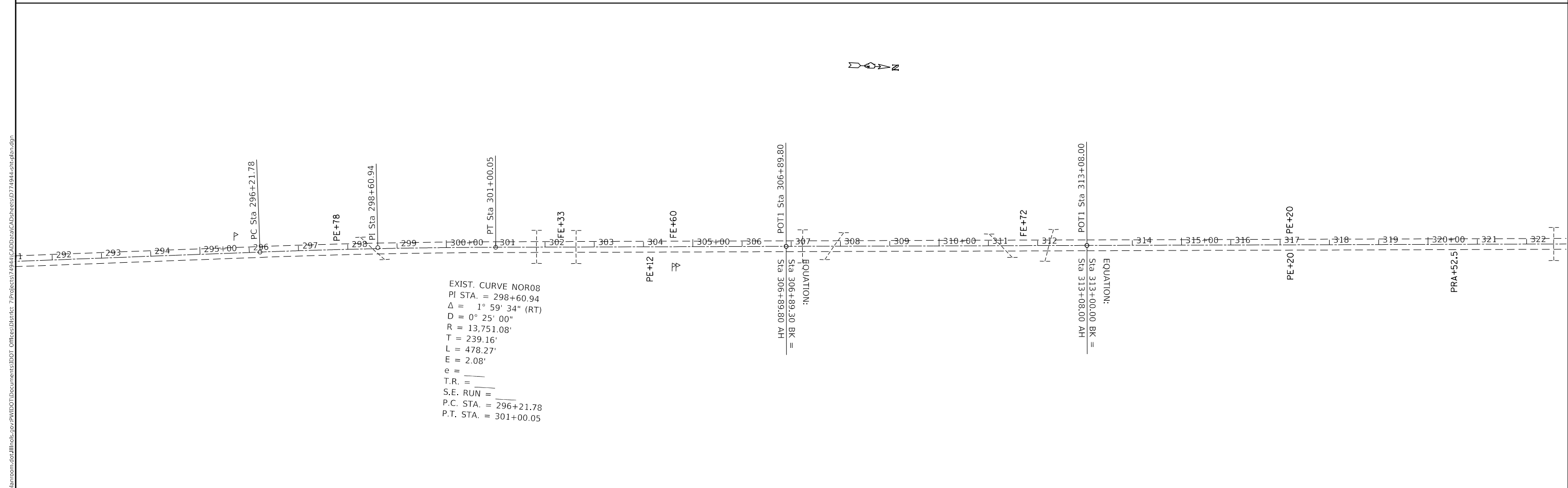
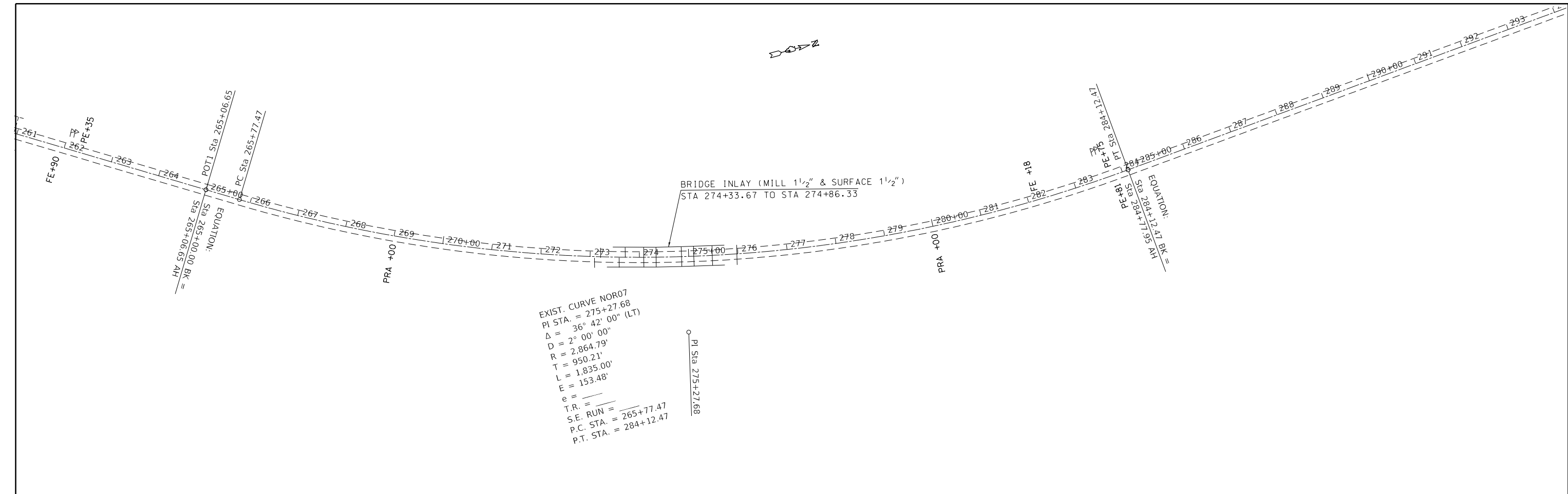
**STATE OF ILLINOIS
 DEPARTMENT OF TRANSPORTATION**

**URBAN & RURAL
 PLAN SHEET**

F.A.P. RTE.	SECTION	COUNTY	TOTAL SHEETS	SHEET NO.
322	20 RS-4 (21, 22) RS-2	FAYETTE	22	11
CONTRACT NO. 74944				
ILLINOIS FED. AID PROJECT				

SCALE: SHEET OF SHEETS STA. TO STA.

MODEL: Default
 FILE: h:\m\c_p\pub\planroom.dwg
 PROJECT: 74944\CADD\DATA\CADD\Drawings\DOT_Offices\Drawings\74944\Sheet\74944-std-plan.dgn



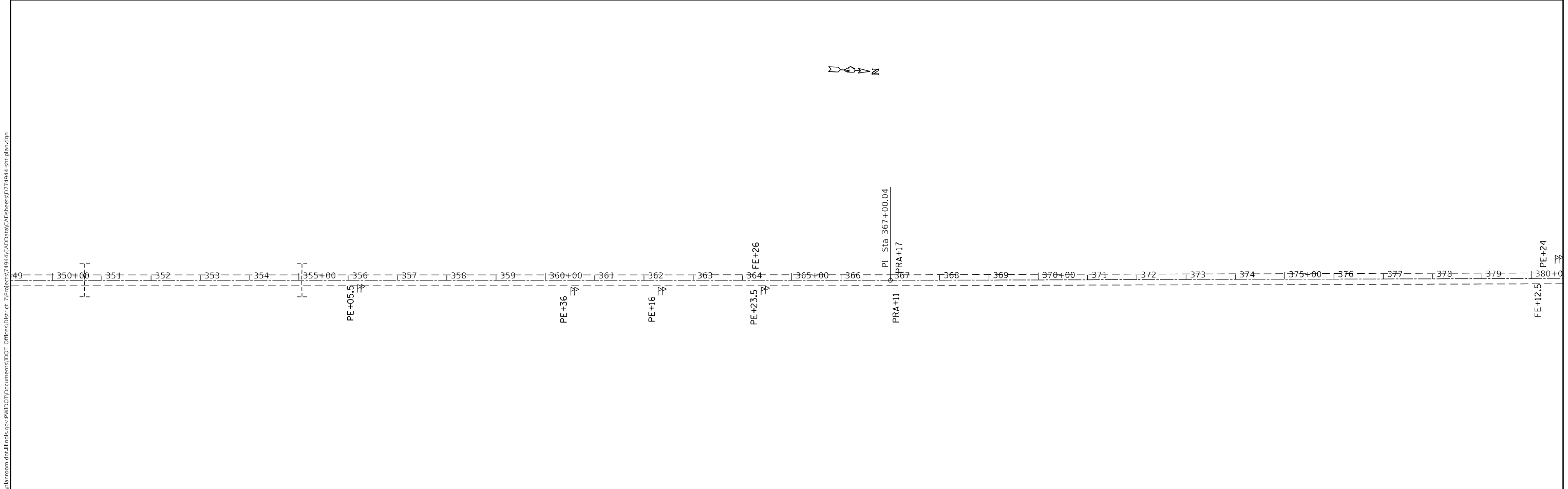
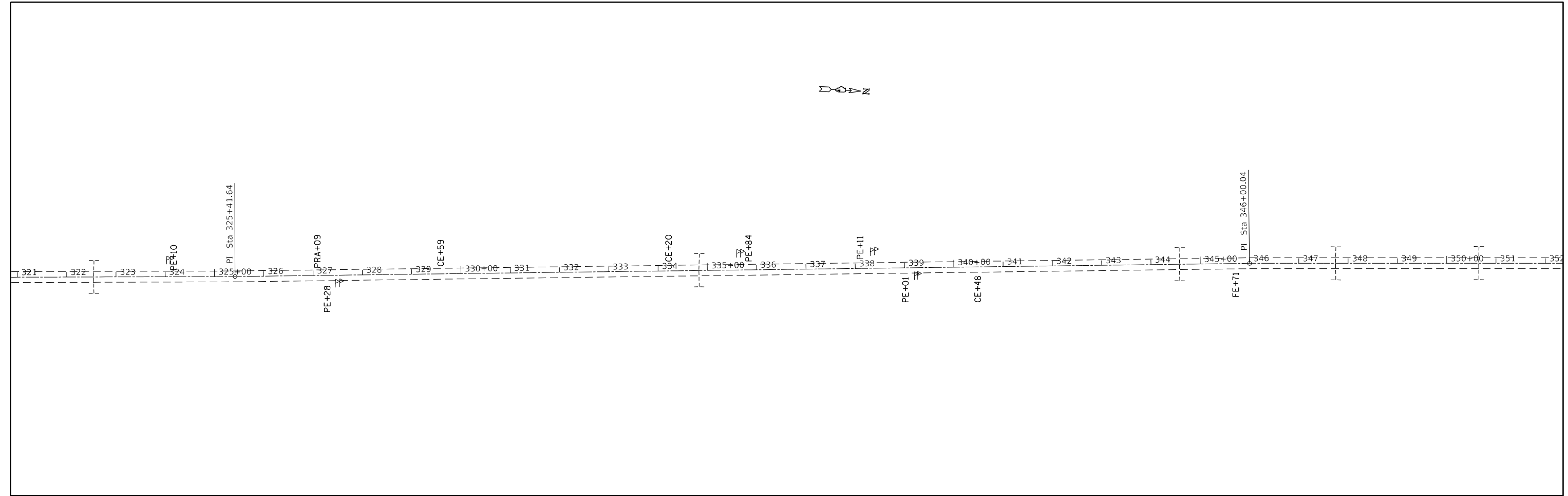
USER NAME = steffemk	DESIGNED -	REVISED -
DRAWN -	REVISED -	
PLOT SCALE = 200.0000' / in.	CHECKED -	REVISED -
PLOT DATE = 12/17/2020	DATE -	REVISED -

**STATE OF ILLINOIS
 DEPARTMENT OF TRANSPORTATION**

RURAL PLAN SHEET				
SCALE:	SHEET	OF	SHEETS	STA. TO STA.

F.A.P. RTE.	SECTION	COUNTY	TOTAL SHEETS	SHEET NO.
	20 RS-4 (21, 22) RS-2	FAYETTE	22	13
CONTRACT NO. 74944				
ILLINOIS FED. AID PROJECT				

MODEL: Default
 FILE: h:\m15c_p10\pub\room.dwg; illinois.gov; RWIDOT\Documents\IDOT_Offices\District 7\Projects\7494\CADD\DATA\CAD\sheets\ID74944-sheetplan.dgn



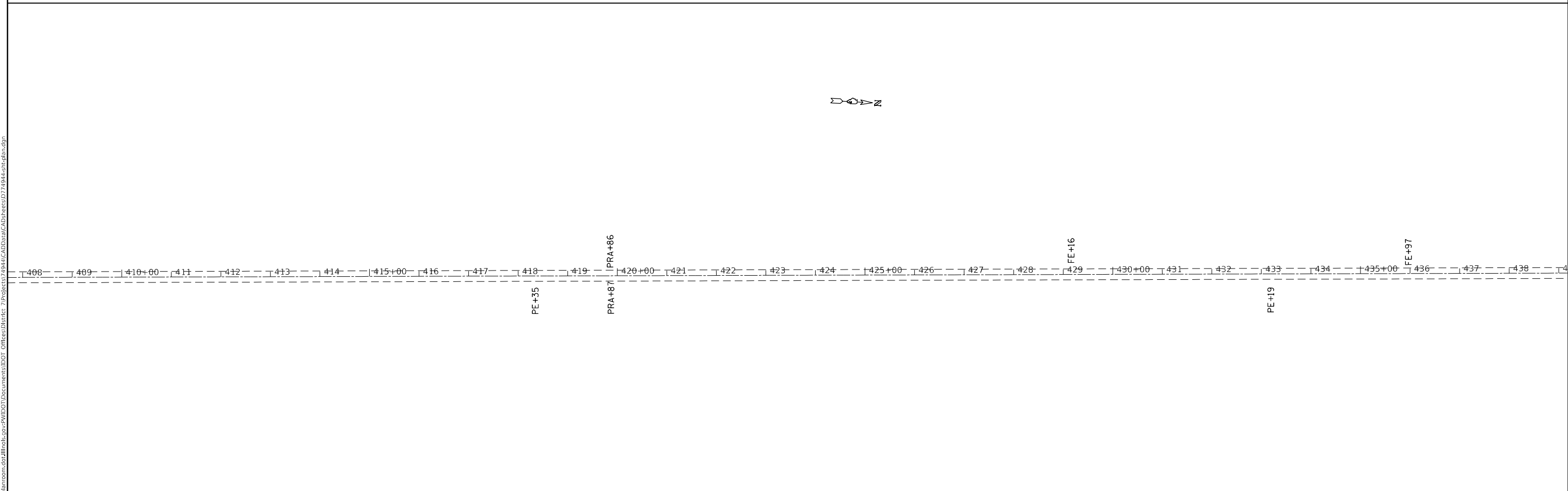
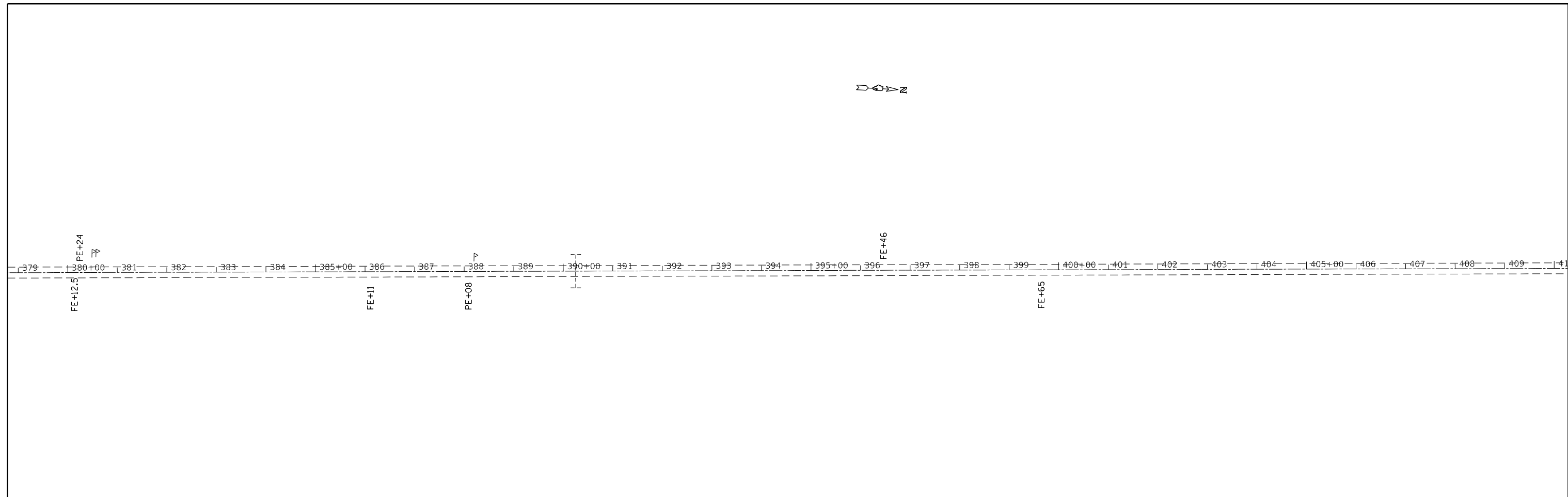
USER NAME = steffenmk	DESIGNED -	REVISED -
	DRAWN -	REVISED -
PLOT SCALE = 200.0000 ' / in.	CHECKED -	REVISED -
PLOT DATE = 12/17/2020	DATE -	REVISED -

**STATE OF ILLINOIS
 DEPARTMENT OF TRANSPORTATION**

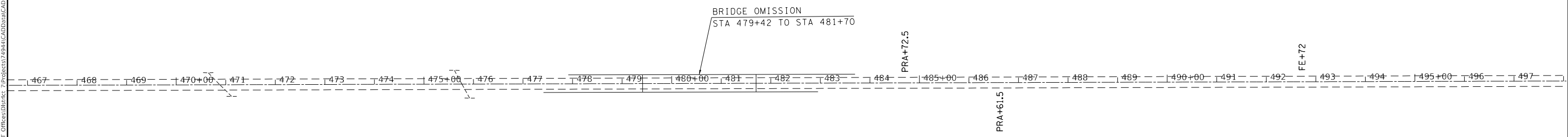
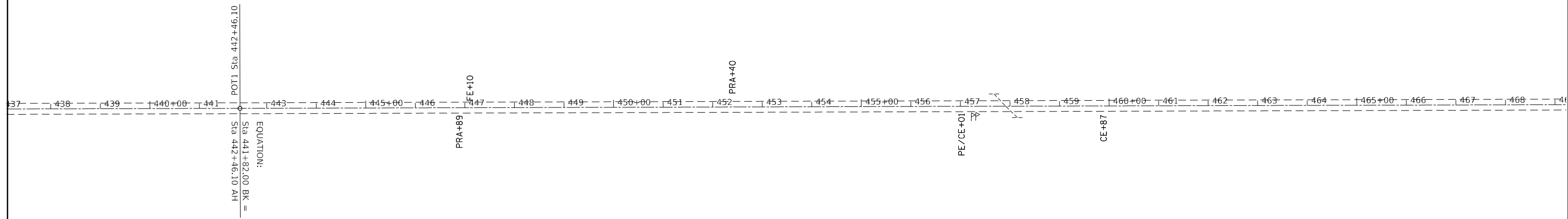
RURAL PLAN SHEET			
SCALE:	SHEET	OF SHEETS	STA. TO STA.

F.A.P. RTE.	SECTION	COUNTY	TOTAL SHEETS	SHEET NO.
322	20 RS-4 (21, 22) RS-2	FAYETTE	22	14
CONTRACT NO. 74944				
ILLINOIS		FED. AID PROJECT		

MODEL: Default
 FILE: h:\m15c_p\pub\planroom.dwg
 PROJECT: 7494\CAAD\DATA\CAD\Drawings\DOT_Offices\Drawings\7494\Sheet\plan.dgn



USER NAME = steffenmk PLOT SCALE = 200.0000 ' / in. PLOT DATE = 12/17/2020	DESIGNED -	REVISED -	STATE OF ILLINOIS DEPARTMENT OF TRANSPORTATION	RURAL PLAN SHEET		F.A.P. RTE.	SECTION	COUNTY	TOTAL SHEETS	SHEET NO.
	DRAWN -	REVISED -				322	20 RS-4 (21, 22) RS-2	FAYETTE	22	15
	CHECKED -	REVISED -		CONTRACT NO. 74944						
	DATE -	REVISED -		SCALE:	SHEET	OF	SHEETS	STA.	TO	STA.



MODEL: Default
 FILE: h:\mfc_p\pub\planroom.dwg
 PROJECT: 74944\CADD\DATA\CADD\Drawings\DOT_Offices\DOT\74944-std\plan.dgn

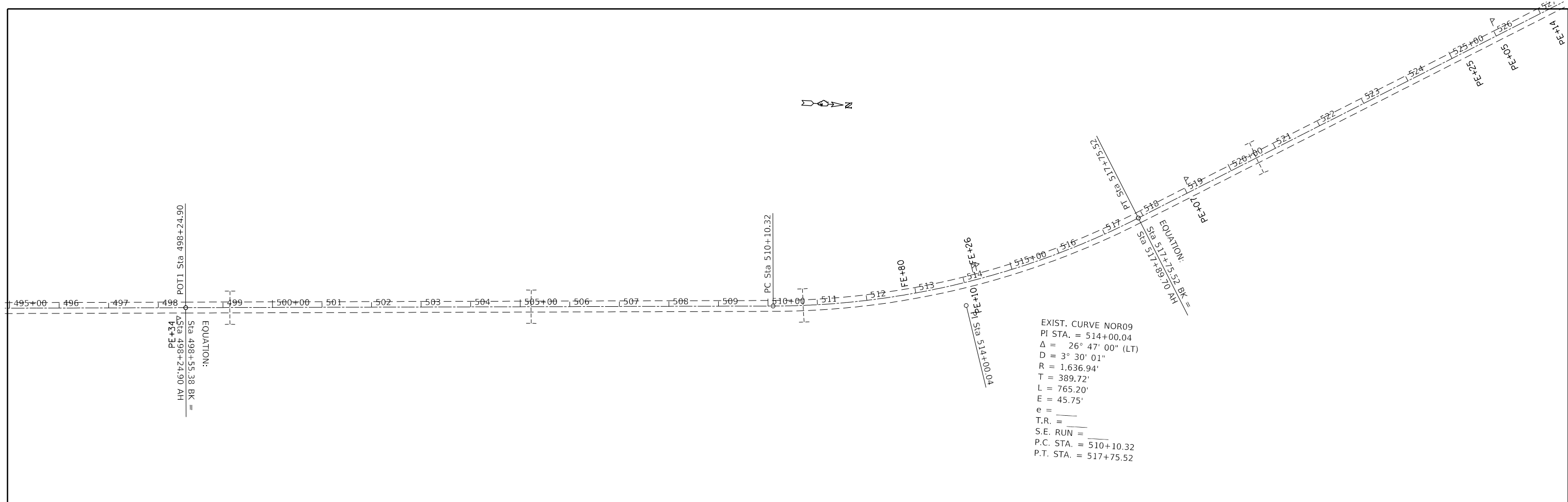
USER NAME = steffemk	DESIGNED -	REVISED -
	DRAWN -	REVISED -
PLOT SCALE = 200.0000' / in.	CHECKED -	REVISED -
PLOT DATE = 12/17/2020	DATE -	REVISED -

STATE OF ILLINOIS
DEPARTMENT OF TRANSPORTATION

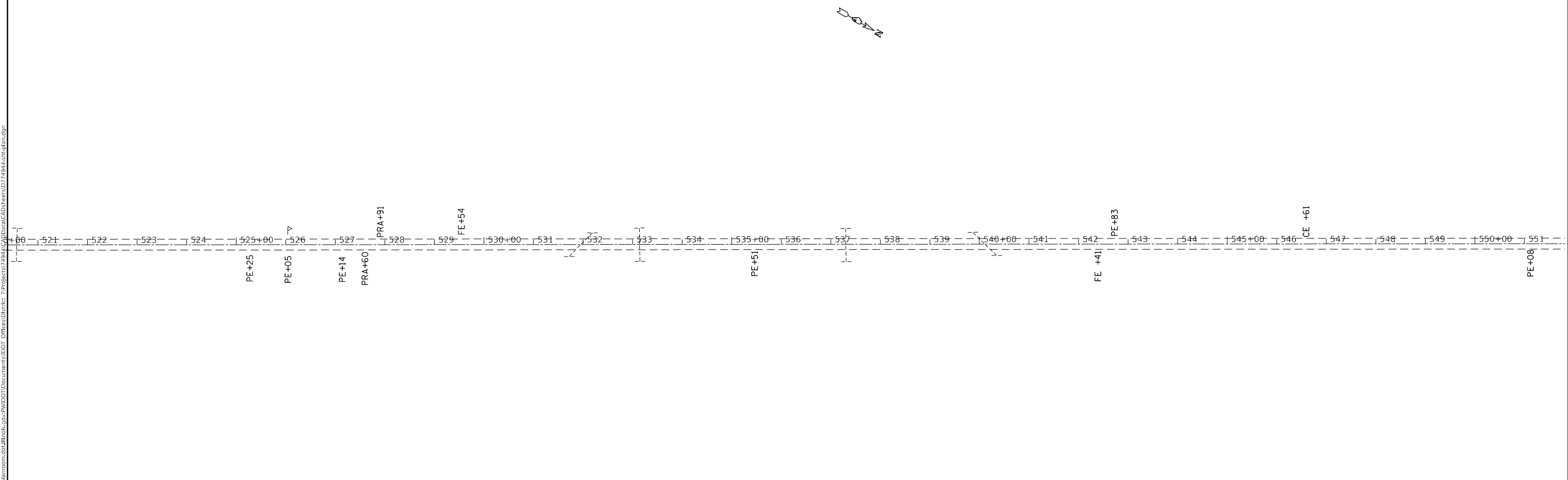
RURAL PLAN SHEET			
SCALE:	SHEET	OF	SHEETS
	STA.	TO	STA.

F.A.P. RTE.	SECTION	COUNTY	TOTAL SHEETS	SHEET NO.
322	20 RS-4 (21, 22) RS-2	FAYETTE	22	16
CONTRACT NO. 74944				
		ILLINOIS	FED. AID PROJECT	

MODEL: Default
 FILE: h:\m15c_p\suplanroom.d\illinois\pww\DOT\Documents\DOT_Offices\District_7\Projects\74944\CADD\data\CADD\shc\shc.dgn



EXIST. CURVE NOR09
 PI STA. = 514+00.04
 $\Delta = 26^\circ 47' 00''$ (LT)
 $D = 3^\circ 30' 01''$
 $R = 1,636.94'$
 $T = 389.72'$
 $L = 765.20'$
 $E = 45.75'$
 $e =$
 T.R. =
 S.E. RUN =
 P.C. STA. = 510+10.32
 P.T. STA. = 517+75.52



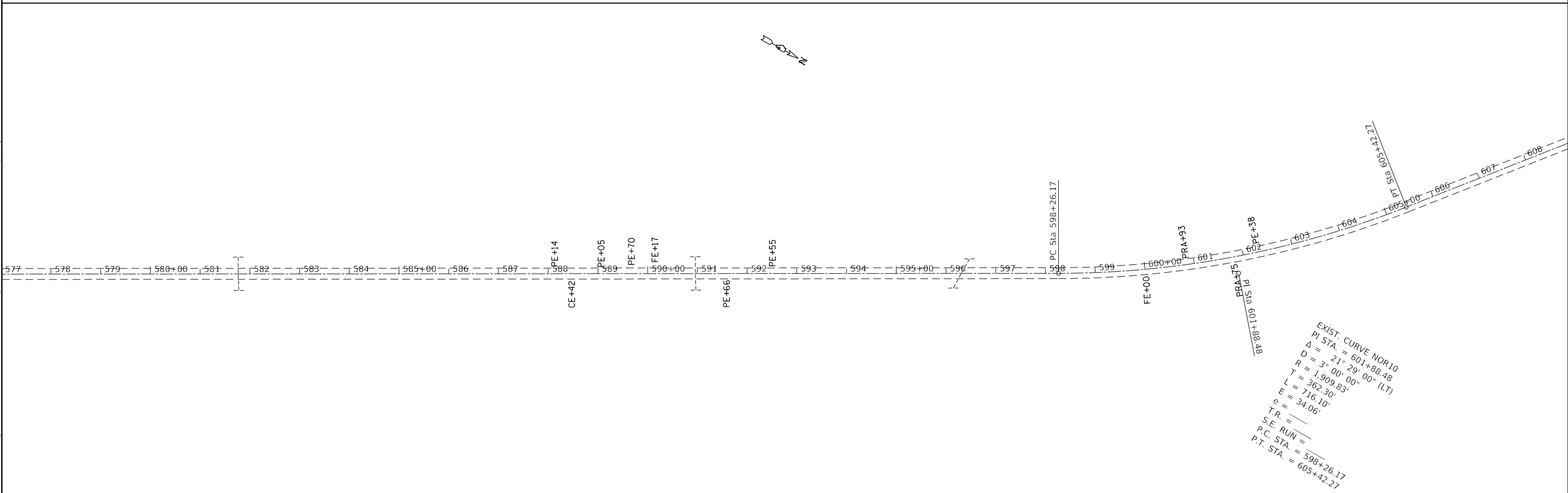
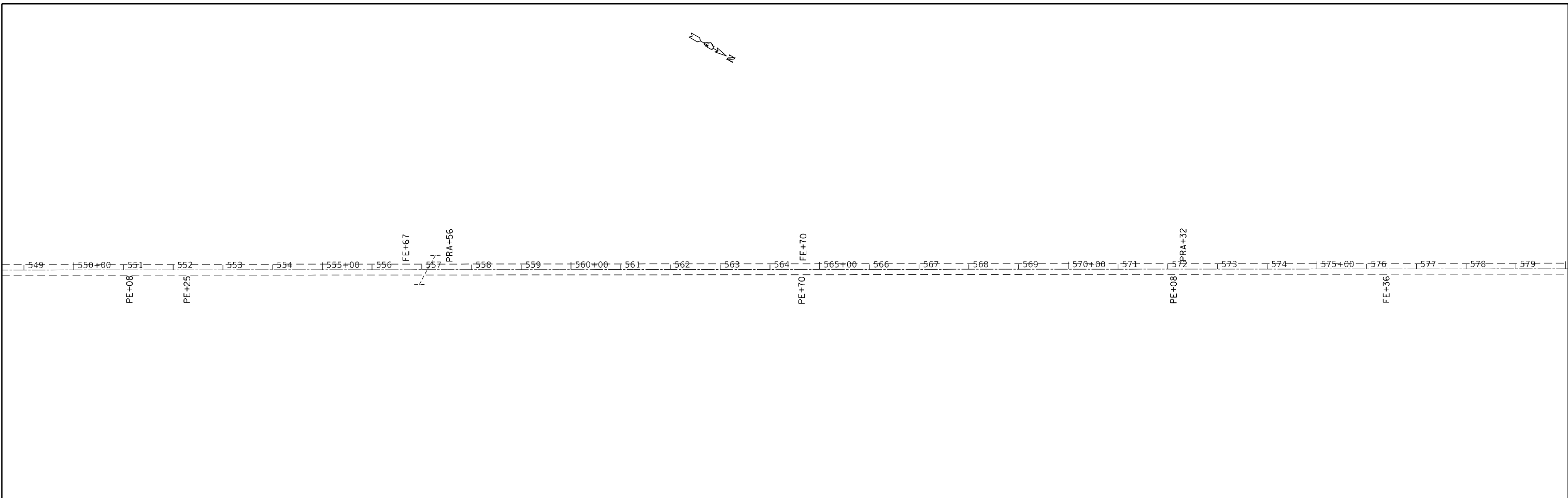
USER NAME = steffenmk	DESIGNED -	REVISED -
	DRAWN -	REVISED -
PLOT SCALE = 200.0000 ' / in.	CHECKED -	REVISED -
PLOT DATE = 12/17/2020	DATE -	REVISED -

**STATE OF ILLINOIS
 DEPARTMENT OF TRANSPORTATION**

RURAL PLAN SHEET

SCALE: SHEET OF SHEETS STA. TO STA.

F.A.P. RTE.	SECTION	COUNTY	TOTAL SHEETS	SHEET NO.
322	20 RS-4 (21, 22) RS-2	FAYETTE	22	17
CONTRACT NO. 74944				
ILLINOIS FED. AID PROJECT				



MODEL: Default
 FILE: h:\mfc_p\pub\barroom.dwg
 PROJECT: 74944\CADD\barroom.dwg
 OFFICE: IDOT
 DATE: 12/17/2020

USER NAME = steffemk	DESIGNED -	REVISED -
	DRAWN -	REVISED -
PLOT SCALE = 200.0000' / in.	CHECKED -	REVISED -
PLOT DATE = 12/17/2020	DATE -	REVISED -

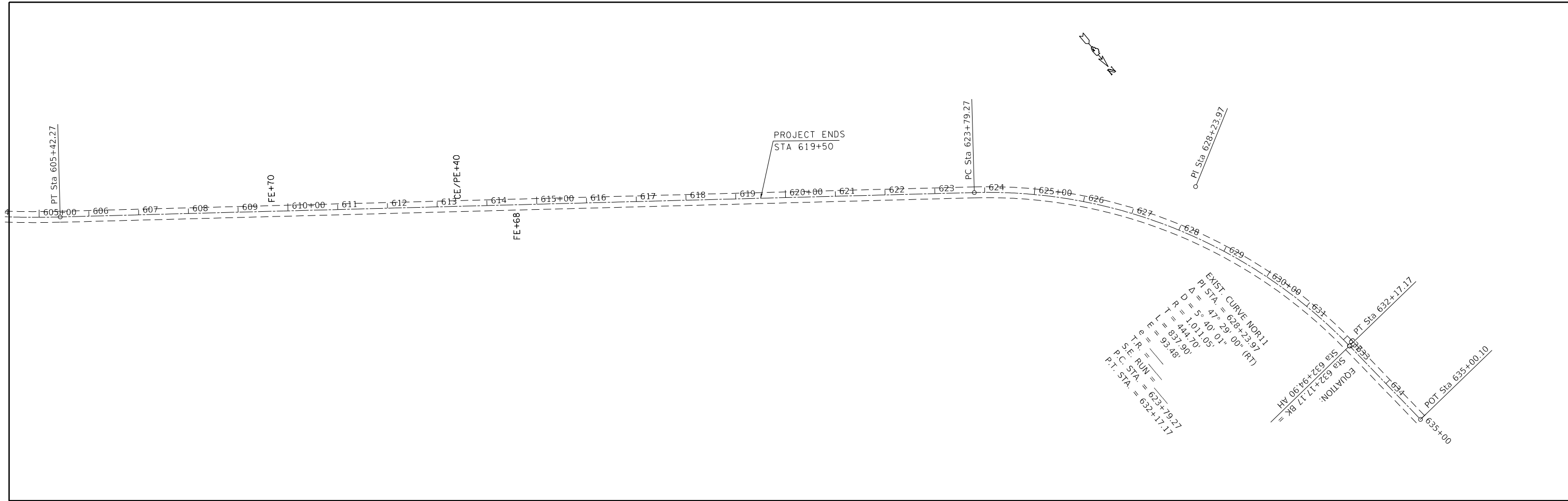
**STATE OF ILLINOIS
DEPARTMENT OF TRANSPORTATION**

RURAL PLAN SHEET

SCALE: SHEET OF SHEETS STA. TO STA.

F.A.P. RTE.	SECTION	COUNTY	TOTAL SHEETS	SHEET NO.
322	20 RS-4 (21, 22) RS-2	FAYETTE	22	18
CONTRACT NO. 74944				
ILLINOIS FED. AID PROJECT				

MODEL: Default
 FILE: h:\m\c\p\pub\barroom.dwg
 PROJECT: 74944\CAADDATA\CADD\Drawings\DOT\Office\Drawings\74944\Sheet\74944-std-plan.dgn



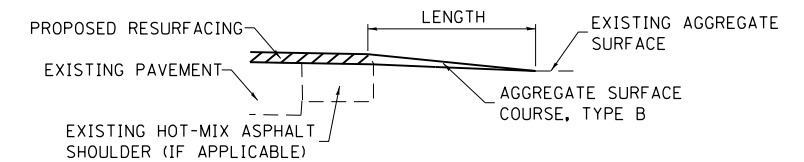
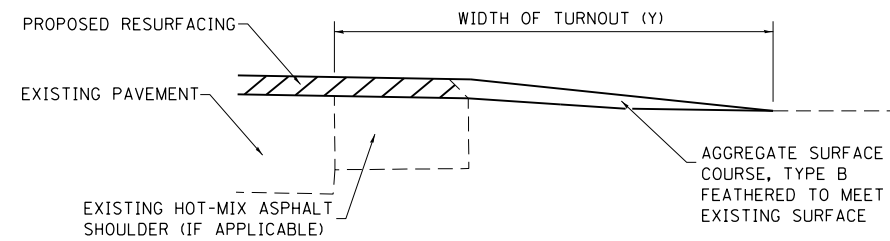
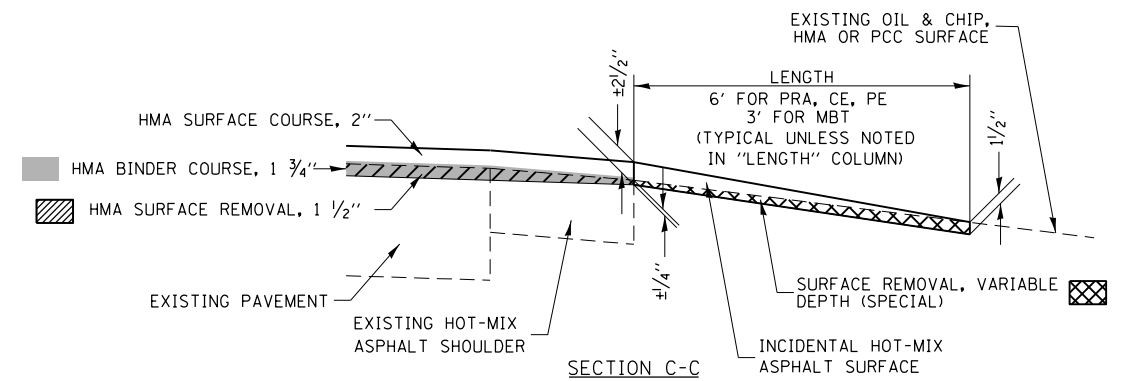
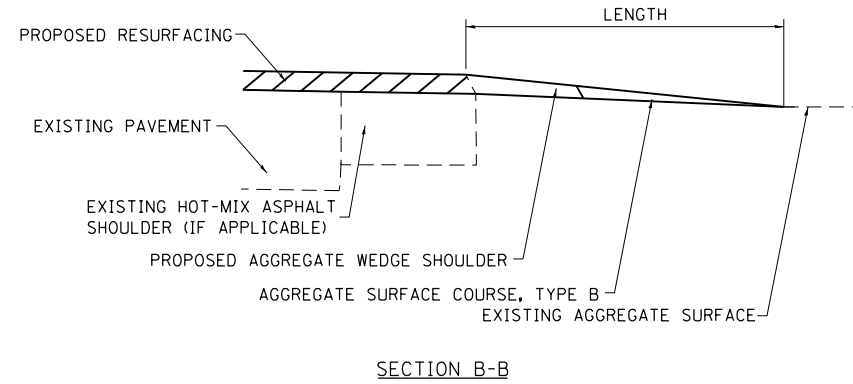
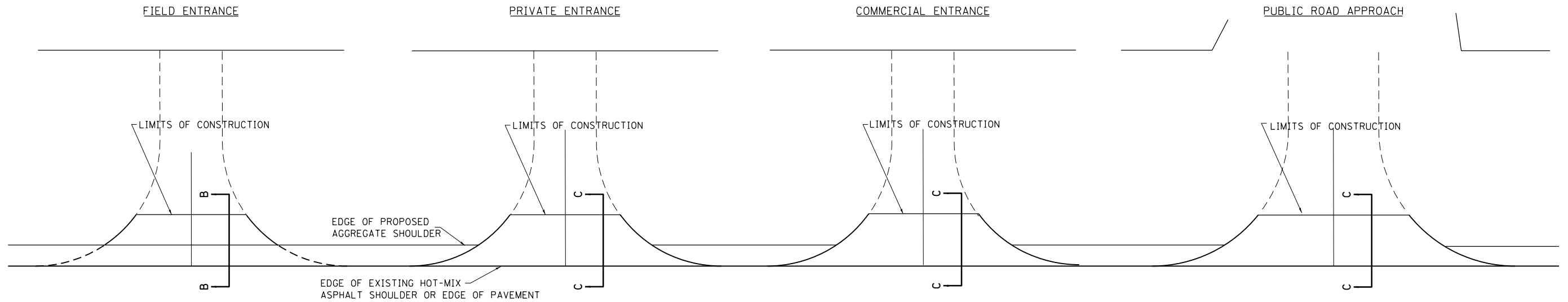
USER NAME = steffenmk	DESIGNED -	REVISED -
	DRAWN -	REVISED -
PLOT SCALE = 200.0000 ' / in.	CHECKED -	REVISED -
PLOT DATE = 12/17/2020	DATE -	REVISED -

**STATE OF ILLINOIS
 DEPARTMENT OF TRANSPORTATION**

RURAL PLAN SHEET

SCALE: SHEET OF SHEETS STA. TO STA.

F.A.P. RTE.	SECTION	COUNTY	TOTAL SHEETS	SHEET NO.
322	20 RS-4 (21, 22) RS-2	FAYETTE	22	19
CONTRACT NO. 74944				
		ILLINOIS	FED. AID PROJECT	



NOTES

LENGTH = 10' UNLESS OTHERWISE NOTED ON PLANS

IF THERE IS NOT EXISTING HOT-MIX ASPHALT SHOULDER THEN THE ENTRANCE TAPER STARTS AT THE EDGE OF EXISTING PAVEMENT.

THE COST OF THE BITUMINOUS MATERIALS (TACK COAT) FOR ENTRANCES AND PUBLIC ROAD APPROACHES SHALL BE INCLUDED IN THE PAY ITEM INCIDENTAL HOT-MIX ASPHALT SURFACING.

NOTE: SEE STANDARD 406201 FOR MAILBOX TURNOUT DETAILS

**STATE OF ILLINOIS
DEPARTMENT OF TRANSPORTATION**

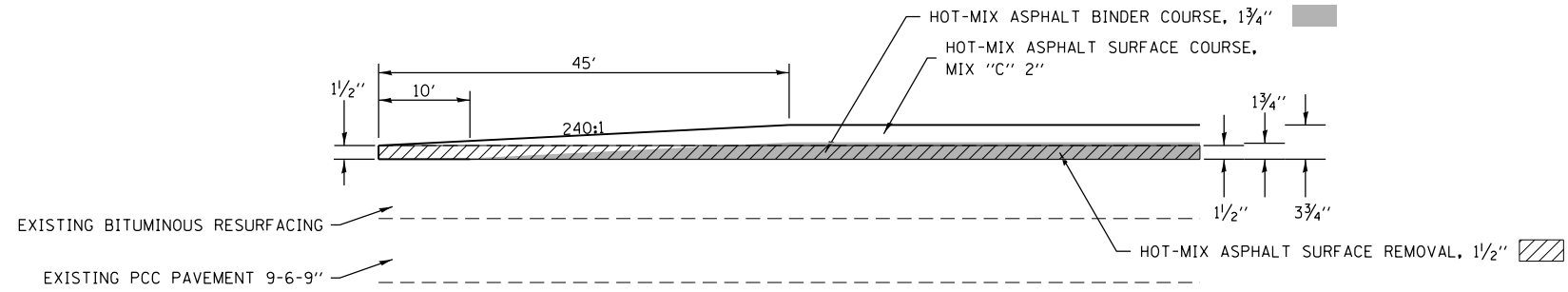
**RURAL ENTRANCES AND MAILBOX TURNOUT DETAILS
WITH SHOULDERS**

F.A.P. RTE.	SECTION	COUNTY	TOTAL SHEETS	SHEET NO.
322	20 RS-4 (21, 22) RS-2	FAYETTE	22	20
CONTRACT NO. 74944				

SCALE: SHEET OF SHEETS STA. TO STA.

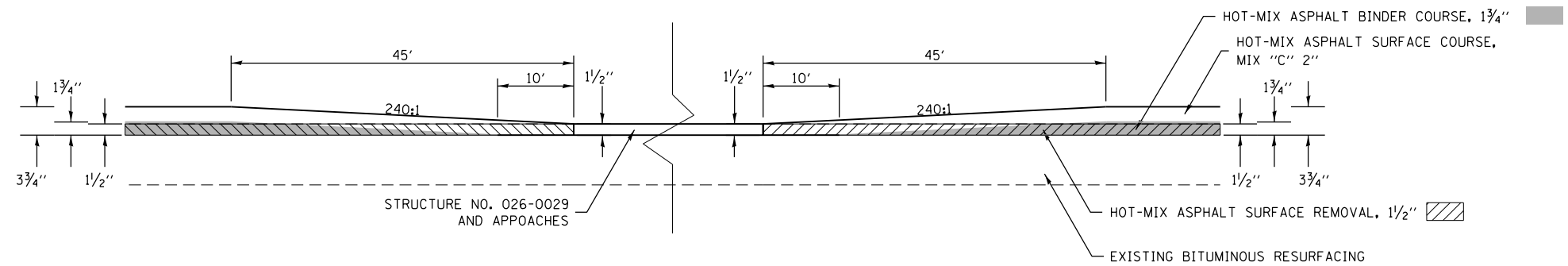
ILLINOIS FED. AID PROJECT

MODEL: Default
 FILE: h:\mhc\p\pub\haronom.dwg
 PLOT DATE: 12/17/2020
 PROJECT: 74944\CAADDATA\CADD\haronom.dwg



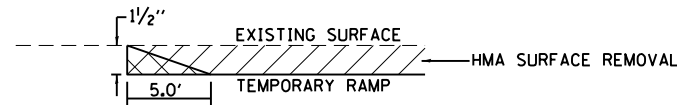
BUTT JOINT DETAIL

STA 27+65 TO STA 27+55	STA 200+36 TO STA 200+46
STA 69+04 TO STA 69+14	STA 479+32 TO STA 479+42
STA 70+86 TO STA 70+96	STA 481+70 TO STA 481+80
STA 200+00 TO STA 200+10	STA 619+75 TO STA 619+85



BRIDGE INLAY DETAIL

STA 273+88.67 TO STA 275+31.33



TEMPORARY RAMP

STA 27+65 TO STA 27+55	STA 200+36 TO STA 200+46
STA 69+04 TO STA 69+14	STA 479+32 TO STA 479+42
STA 70+86 TO STA 70+96	STA 481+70 TO STA 481+80
STA 200+00 TO STA 200+10	STA 619+75 TO STA 619+85

NOT TO SCALE

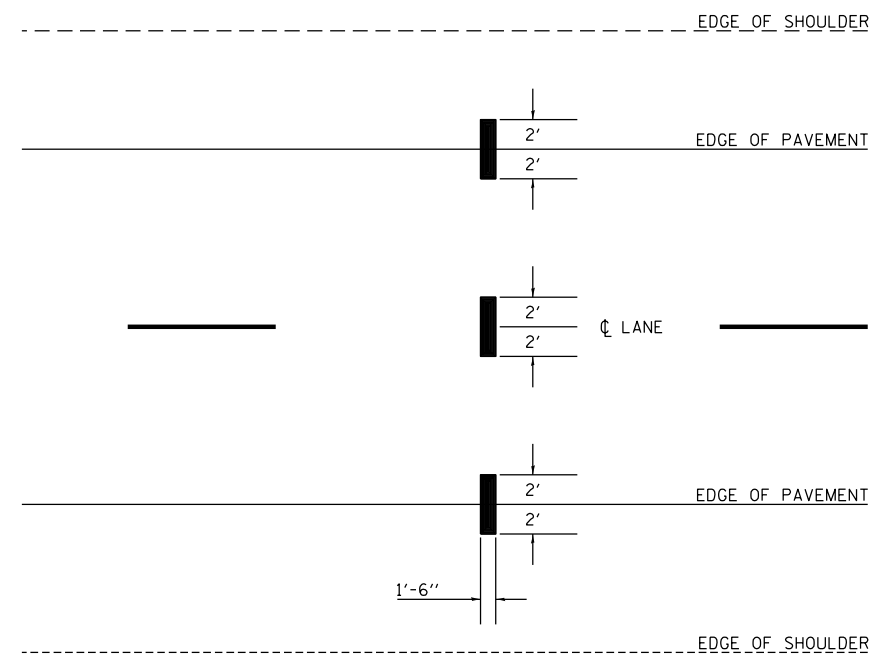
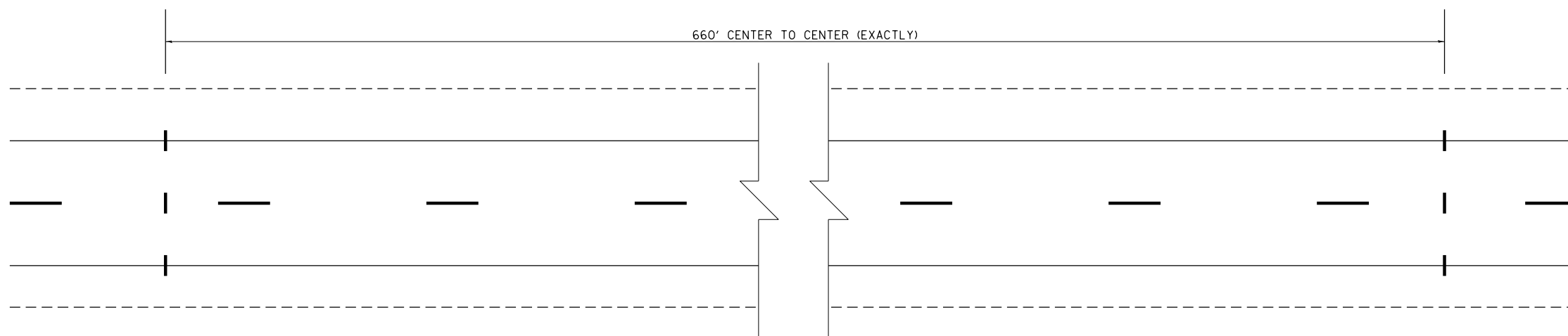
MODEL: Default
 FILE: h:\mhc\p\suplanroom.d\at\illinois.gov\PI\DOT\Documents\DOT_Offices\Dir\ct 7\Projects\7494\CA\00Data\CAD\Drawings\74944-shc-drawings.dgn

USER NAME = steffemk	DESIGNED -	REVISED -
	DRAWN -	REVISED -
PLOT SCALE = 100.0000 ' / in.	CHECKED -	REVISED -
PLOT DATE = 12/17/2020	DATE -	REVISED -

**STATE OF ILLINOIS
DEPARTMENT OF TRANSPORTATION**

DETAILS	
SCALE:	SHEET OF SHEETS STA. TO STA.

F.A.P. RTE.	SECTION	COUNTY	TOTAL SHEETS	SHEET NO.
322	20 RS-4 (21, 22) RS-2	FAYETTE	22	21
CONTRACT NO. 74944				
ILLINOIS FED. AID PROJECT				



NOTE:
STATE POLICE REPRESENTATIVE MUST
BE PRESENT WHEN AERIAL SPEED ZONE
PAVEMENT MARKING IS PLACED.
IDOT WILL COORDINATE.

NOT TO SCALE

MODEL: Default
 FILE: \\nashville.pw.state.tx.us\pub\baronm.d\dot\illinois\pwr\DOT\Documents\DOT_Offices\IDOT\74944\CAAD\Drawings\74944-SPC-drawings.dgn

USER NAME = steffenmk	DESIGNED -	REVISED -
	DRAWN -	REVISED -
PLOT SCALE = 100.0000' / in.	CHECKED -	REVISED -
PLOT DATE = 12/17/2020	DATE -	REVISED -

**STATE OF ILLINOIS
DEPARTMENT OF TRANSPORTATION**

AERIAL SPEED ZONE CHECKS

SCALE: SHEET OF SHEETS STA. TO STA.

F.A.P. RTE.	SECTION	COUNTY	TOTAL SHEETS	SHEET NO.
322	20 RS-4 (21, 22) RS-2	FAYETTE	22	22
CONTRACT NO. 74944				
		ILLINOIS	FED. AID PROJECT	