

03-05-2021 LETTING ITEM 120

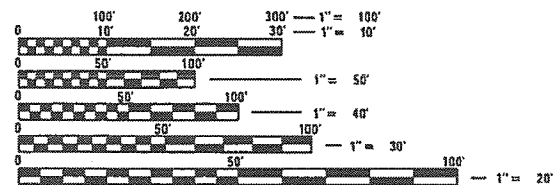
INDEX OF SHEETS

- 1 - COVER SHEET
- 2 - GENERAL NOTES
- 3-5 - SUMMARY OF QUANTITIES
- 6-7 - TYPICAL SECTIONS
- 8-9 - PLAN AND DRAINAGE DETAILS
- 10-11 - QUANTITY SCHEDULES
- 12 - PLAN
- 13 - PROFILE
- 14 - SIGN AND BARRICADE LOCATION PLAN
- 15-25 - WEST DOUGLAS CROSS SECTIONS
- 26-32 - ABANDONED RAILROAD CROSS SECTIONS
- 33 - BLUE JAY ROAD CROSS SECTIONS
- 34 - ANDREASEN DRIVE CROSS SECTIONS

HIGHWAY STANDARDS

- STANDARD 280001-07
- STANDARD 424001-11
- STANDARD 542301-03
- STANDARD 602301-04
- STANDARD 602306-03
- STANDARD 602401-07
- STANDARD 604036-03
- STANDARD 604051-04
- STANDARD 606001-07
- STANDARD 701901-08
- STANDARD 780001-05
- STANDARD BLR 21-9
- STANDARD S42311

LAND SECTION - 14
 LAND QUARTER SECTION - S.W.
 FUNCTIONAL CLASSIFICATION: MAJOR COLLECTOR
 A.D.T. - 1500 (2020)
 A.D.T. - 1532 (2032)
 35 M.P.H. DESIGN SPEED

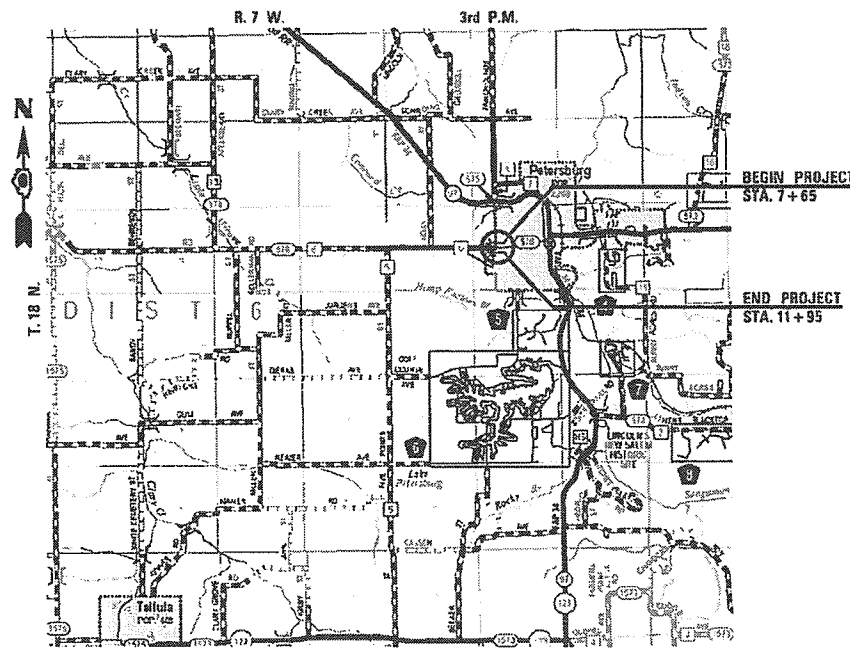


FULL SIZE PLANS HAVE BEEN PREPARED USING STANDARD ENGINEERING SCALES. REDUCED SIZED PLANS WILL NOT CONFORM TO STANDARD SCALES. IN MAKING MEASUREMENTS ON REDUCED PLANS, THE ABOVE SCALES MAY BE USED.

J.U.L.I.E.
 JOINT UTILITY LOCATION INFORMATION FOR EXCAVATORS
 1-800-892-0123
 OR 811

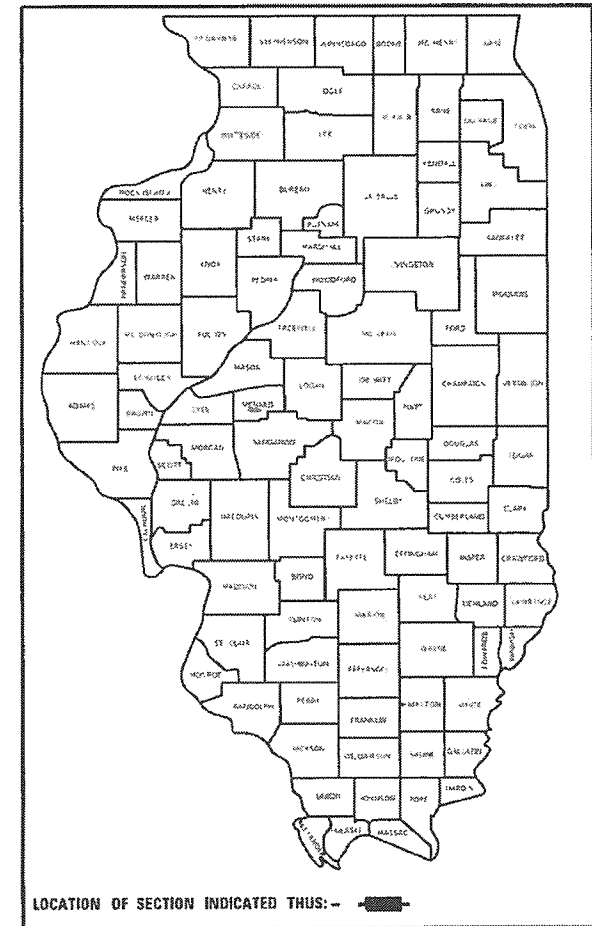
STATE OF ILLINOIS
 DEPARTMENT OF TRANSPORTATION
**PLANS FOR PROPOSED
 SURFACE TRANSPORTATION
 PROGRAM - BRIDGE**

**F.A.S. 576 (CH-6 - WEST DOUGLAS AVE.) OVER
 ABANDONED RAILROAD
 SECTION 18-00069-00-BR
 PROJECT HKYR (716)
 MENARD COUNTY
 C-96-005-20**



LOCATION PLAN

NET LENGTH OF PROJECT = 430.00 FT. = 0.081 MILE



LOCATION OF SECTION INDICATED THIS: - [rectangle symbol]

EXISTING STRUCTURE: 3 SPAN PRECAST PRESTRESSED CONCRETE DECK BEAMS ON OPEN CONCRETE ABUTMENTS AND PILE BENT PIERS. 155'-2 1/2" BACK TO BACK ABUTMENTS. 40 DEGREE SKEW LT. FORWARD. EXISTING SN 065-6000

PROPOSED IMPROVEMENT: THE EXISTING STRUCTURE WILL BE REMOVED AND THE AREA UNDERNEATH THE STRUCTURE WILL BE FILLED WITH EMBANKMENT. NEW HOT MIX ASPHALT PAVEMENT 24'-0" WIDE WITH TYPE B-6.12 CURB AND GUTTER WILL BE INSTALLED ALONG WITH NEW SIDEWALK AND STORM SEWER.

STATE OF ILLINOIS
 DEPARTMENT OF TRANSPORTATION
 DIVISION OF HIGHWAYS

APPROVED Sept 29, 2020

 COUNTY ENGINEER

APPROVED Sept 29, 2020

 MAYOR OF PETERSBURG

PASSED Oct. 27, 2020

 DISTRICT SIX ENGINEER OF LOCAL ROADS & STREETS

Releasing For Bid Based on Limited Review Oct 27, 2020

 REGION FOUR ENGINEER



Christopher F. Kohlman 9/29/20
 EXPIRATION: 11/30/2021

FILE NAME: #FILE#	USER NAME: #USER#	DESIGNED: -	REVISED: -		Veenstra & Kimm, Inc. Springfield, IL. Phone: (217)544-8033 IL Design Firm No. 184-001939	COVER SHEET		F.A.S. RTE.	SECTION	COUNTY	TOTAL SHEETS	SHEET NO.		
		DRAWN: -	REVISED: -			SCALE: NONE	SHEET NO. 1 OF 1 SHEETS	STA. _____	TO STA. _____	576	18-00069-00-BR	MENARD	34	1
		CHECKED: -	REVISED: -							CONTRACT NO. 93756				
		PLOT DATE: #DATE#	DATE: -					FED. ROAD DIST. NO., (ILLINOIS) FED. AID PROJECT						

PROPERTY OWNER ACCESS REQUIREMENT

ACCESS MUST BE MAINTAINED TO ALL EXISTING PROPERTIES DURING CONSTRUCTION PER ARTICLE 107.09 UNLESS ARRANGEMENTS ARE MADE IN WRITING BY THE CONTRACTOR WITH THE PROPERTY OWNERS WITH A COPY TO THE ENGINEER FOR SHORT-TERM CLOSURES.

GENERAL NOTES

- 1.) THE THICKNESS OF HOT-MIX ASPHALT MIXTURES SHOWN ON THE PLANS IS THE NOMINAL THICKNESS. DEVIATIONS FROM THE NOMINAL THICKNESS WILL BE PERMITTED WHEN SUCH DEVIATIONS OCCUR DUE TO IRREGULARITIES IN THE EXISTING SURFACE OR BASE ON WHICH THE BITUMINOUS MIXTURE IS PLACED.
- 2.) EXCEPT AS NOTED IN THE PLANS, PAVEMENT GRADES SHOWN ARE AT THE TOP OF PAVEMENT SURFACES.
- 3.) WHERE SECTION OR SUBSECTION MONUMENTS ARE ENCOUNTERED, THE ENGINEER SHALL BE NOTIFIED BEFORE SUCH MONUMENTS ARE REMOVED. THE CONTRACTOR SHALL PROTECT AND CAREFULLY PRESERVE ALL PROPERTY MARKERS AND MONUMENTS UNTIL THE OWNER OR AN AUTHORIZED SURVEYOR OR AGENT HAS WITNESSED OR OTHERWISE REFERENCED THEIR LOCATION. THE CONTRACTOR WILL BE RESPONSIBLE FOR HAVING AN AUTHORIZED SURVEYOR RE-ESTABLISH ANY SECTION OR SUBSECTION MONUMENTS DESTROYED BY HIS OPERATIONS.
- 4.) SEEDING WILL NOT BE PERMITTED AT ANY TIME WHEN THE GROUND IS FROZEN, WET OR IN AN UNTILLABLE CONDITION. AREAS TO BE SEEDDED SHALL BE DETERMINED BY THE ENGINEER AND SEEDDED AS SOON AS POSSIBLE.
- 5.) ALL SAW CUTS, NECESSARY TO COMPLETE THE WORK DETAILED IN THESE PLANS, SHALL BE INCLUDED IN THE COST FOR THE VARIOUS PAY ITEMS INVOLVED. THE MINIMUM SAW CUT DEPTH IN THE PAVEMENT SHALL BE 1½" UNLESS OTHERWISE SPECIFIED IN A DETAIL SHOWN IN THE PLANS.
- 6.) ABANDONED UNDERGROUND UTILITIES THAT CONFLICT WITH CONSTRUCTION SHALL BE DISPOSED OUTSIDE THE LIMITS OF RIGHT OF WAY ACCORDING TO ARTICLE 202.03 OF THE STANDARD SPECIFICATIONS AND AS DIRECTED BY THE ENGINEER. THIS WORK WILL NOT BE PAID FOR SEPERATELY BUT SHALL BE INCLUDED IN THE COST PER CUBIC YARD FOR EARTH EXCAVATION AND NO ADDITIONAL COMPENSATION WILL BE ALLOWED.
- 7.) ANY REFERENCE TO A STANDARD IN THESE PLANS SHALL BE INTERPRETED TO MEAN THE EDITION AS INDICATED BY THE SUBNUMBER LISTED IN THE INDEX OF SHEETS OR THE COPY OF THE STANDARD INCLUDED IN THESE PLANS.
- 8.) IN ADDITION TO THE FIELD SURVEYS, PLAN DIMENSIONS AND DETAILS RELATIVE TO THE EXISTING FACILITIES HAVE BEEN TAKEN FROM EXISTING PLANS AND ARE SUBJECT TO CONSTRUCTION VARIATIONS. IT SHALL BE THE CONTRACTOR'S RESPONSIBILITY TO VERIFY SUCH DIMENSIONS AND DETAILS IN THE FIELD. SUCH VARIATIONS SHALL NOT BE A CAUSE FOR ADDITIONAL COMPENSATION DUE TO CHANGE IN THE SCOPE OF WORK. HOWEVER, THE CONTRACTOR WILL BE PAID FOR THE QUANTITY ACTUALLY FURNISHED AT THE UNIT PRICE BID FOR THE WORK.
- 9.) THE LOCATION OF ALL UTILITIES ARE BASED ON INFORMATION PROVIDED BY OTHERS AND IS INTENDED TO BE APPROXIMATE. IT SHALL BE THE CONTRACTOR'S RESPONSIBILITY TO COORDINATE HIS CONSTRUCTION ACTIVITIES WITH THE VARIOUS UTILITY OWNERS. ALL POTENTIAL CONFLICTS SHALL BE INVESTIGATED AND REMEDIAL ACTION TAKEN PRIOR TO INTERRUPTION OF THE CONTRACTOR'S PROGRESS.
- 10.) THE CONTRACTOR SHALL BE RESPONSIBLE FOR PROTECTING UTILITY PROPERTY FROM CONSTRUCTION OPERATIONS AS OUTLINED IN ARTICLE 107.39 OF THE STANDARD SPECIFICATIONS. THE J.U.L.I.E. NUMBER IS 800-892-0123. A MINIMUM OF FORTY-EIGHT HOURS ADVANCE NOTICE IS REQUIRED.
- 11.) ALL ELEVATIONS SHOWN ON THE PLANS ARE BASED ON U.S.G.S. MEAN SEA LEVEL DATUM. ALL STATION AND OFFSET REFERENCES ARE TO THE ROADWAY CENTERLINE UNLESS OTHERWISE NOTED. THE STATE PLANE COORDINATE SYSTEM HAS BEEN USED FOR THE HORIZONTAL CONTROL.
- 12.) THE MENARD COUNTY ENGINEER SHALL BE NOTIFIED AT LEAST 21 DAYS PRIOR TO CLOSING THE ROAD TO TRAFFIC (PH: 217-632-2722).
- 13.) PRIOR TO THE USE OF ANY BORROW AREAS, USE AREAS, (TEMPORARY ACCESS ROADS, DETOURS, RUNAROUNDS, ETC.) AND OR WASTE AREAS, THE CONTRACTOR SHALL FILE THE REQUIRED ENVIRONMENTAL RESOURCE REQUEST SURVEYS ACCORDING TO SECTION 107.22 OF THE STANDARD SPECIFICATIONS. THESE SURVEYS ARE REQUIRED IN ORDER FOR THE DEPARTMENT TO CONDUCT CULTURAL AND BIOLOGICAL RESOURCE SURVEYS FOR THE PROPOSED SITE.

UTILITIES

PETERSBURG WATER/SEWER DEPARTMENT
MR. KYLE HONKALA
122 SOUTH 6TH STREET
P.O. BOX 287
PETERSBURG, ILLINOIS 62675
217-632-7751

MENARD ELECTRIC COOPERATIVE
MR. BRADY SMITH
P.O. BOX 200
PETERSBURG, ILLINOIS 62675
217-632-7746

CASS CABLE TV, INC.
MR. LANCE ALLEN
100 REDBUD ROAD
P.O. BOX 200
VIRGINIA, ILLINOIS 62691
217-452-7800

AMEREN ILLINOIS
MR. DOUGLAS PALMER
1900 W. LAFAYETTE
JACKSONVILLE, ILLINOIS 62650
217-479-5203 (O)
217-714-7258 (C)
DPALMER3@AMEREN.COM

AT&T
MS. TERESA MAYER
529 SOUTH 7TH STREET
FLOOR 3B
SPRINGFIELD, ILLINOIS 62721
217-789-8666
TM5935@ATT.COM

MIXTURE REQUIREMENTS

MIXTURE USE(S)	HOT MIX ASPHALT SURFACE COURSE MIX "C", N50	HOT MIX ASPHALT BASE COURSE
AC/PG	PG 64-22	PG 64-22
DESIGN AIR Voids	4.0% @ N DESIGN = 50	4.0% @ N DESIGN = 50
MIXTURE COMPOSITION	IL 9.5	IL 19.0
FRICTION AGGREGATE	MIX C	N/A
SUBLOT SIZE	N/A	N/A

THE FOLLOWING RATES OF APPLICATION HAVE BEEN USED TO CALCULATE THE PLAN QUANTITIES:

BITUMINOUS MATERIALS (TACK COAT)	0.05 LBS/SQ. FT. (ON PAVEMENT)
BITUMINOUS MATERIALS (PRIME COAT)	0.25 LBS/SQ.FT. (ON AGG)
HOT MIX ASPHALT SURFACE / BINDER	0.056 TON/SQ. YD. PER 1"
COMPACTED AGGREGATE MATERIAL, TYPE A	1.8 TON/CU. YD.
STONE RIPRAP	1.5 TON/CU. YD.
NITROGEN FERTILIZER NUTRIENT	90 LBS./ACRE
PHOSPHOROUS FERTILIZER NUTRIENT	90 LBS./ACRE
POTASSIUM FERTILIZER NUTRIENT	90 LBS./ACRE
AGRICULTURAL GROUND LIMESTONE	2.0 TON/ACRE

FILE NAME =	USER NAME = \$USER\$	DESIGNED - -	REVISED - -		Veenstra & Kimm, Inc. Springfield, IL. Phone: (217)544-8033 IL. Design Firm No. 184-001939	GENERAL NOTES			F.A.S. RTE.	SECTION	COUNTY	TOTAL SHEETS	SHEET NO.	
*FILEL\$		DRAWN - -	REVISED - -			SCALE:	SHEET NO. ___ OF ___ SHEETS	STA. _____	TO STA. _____	576	18-00069-00-BR	MENARD	34	2
	PLOT SCALE = \$SCALE\$	CHECKED - -	REVISED - -						CONTRACT NO. 93756					
	PLOT DATE = \$DATE\$	DATE - -	REVISED - -			FED. ROAD DIST. NO. _ ILLINOIS FED. AID PROJECT								

CODE NO.	ITEM	UNIT	TOTAL QUANTITY	CONSTR. CODE
				ROADWAY 0004 S.N.
20100500	TREE REMOVAL, ACRES	ACRE	0.75	0.75
20200100	EARTH EXCAVATION	CU YD	714	714
20400800	FURNISHED EXCAVATION	CU YD	9054	9054
20800150	TRENCH BACKFILL	CU YD	6	6
28000250	TEMPORARY EROSION CONTROL SEEDING	POUND	125	125
28000400	PERIMETER EROSION BARRIER	FOOT	1024	1024
28000500	INLET AND PIPE PROTECTION	EACH	2	2
28100807	STONE DUMPED RIPRAP, CLASS A4	TON	17	17
35100100	AGGREGATE BASE COURSE, TYPE A	TON	897	897
35501306	HOT-MIX ASPHALT BASE COURSE, 5 1/2"	SQ YD	1147	1147
40600275	BITUMINOUS MATERIALS (PRIME COAT)	POUND	3289	3289
40600290	BITUMINOUS MATERIALS (TACK COAT)	POUND	350	350
40600982	HOT-MIX ASPHALT SURFACE REMOVAL - BUTT JOINT	SQ YD	204	204
40604050	HOT MIX ASPHALT SURFACE COURSE, IL 9.5, MIX "C", N50	TON	121	121

* SEE SPECIAL PROVISIONS

Δ SPECIALTY ITEMS

FILE NAME = \$FILEL*	USER NAME = \$USER*	DESIGNED - DRAWN -	REVISED - REVISED - REVISED -	 Veenstra & Kimm, Inc. Springfield, IL. Phone: (217)544-8033 IL. Design Firm No. 184-001939	SUMMARY OF QUANTITIES SCALE: NONE SHEET NO. 1 OF 3 SHEETS STA. _____ TO STA. _____			F.A.S. RTE. 576	SECTION 18-00069-00-BR	COUNTY MENARD	TOTAL SHEETS 34	SHEET NO. 3
PLOT SCALE = \$SCALE*	CHECKED -	DATE -	REVISED -					FED. ROAD DIST. NO. _____ [ILLINOIS] FED. AID PROJECT			CONTRACT NO. 93756	

CODE NO.	ITEM	UNIT	TOTAL QUANTITY	CONSTR. CODE
				ROADWAY 0004 S.N.
42400100	PORTLAND CEMENT CONCRETE SIDEWALK 4 INCH	SQ FT	5013	5013
42400800	DETECTABLE WARNINGS	SQ FT	92	92
44000100	PAVEMENT REMOVAL	SQ YD	791	791
44000400	GUTTER REMOVAL	FOOT	132	132
44000500	COMBINATION CURB AND GUTTER REMOVAL	FOOT	417	417
44000600	SIDEWALK REMOVAL	SQ FT	2147	2147
* 50100100	REMOVAL OF EXISTING STRUCTURES	EACH	1	1
50105220	PIPE CULVERT REMOVAL	FOOT	122	122
542A0220	PIPE CULVERTS, CLASS A, TYPE 1 15"	FOOT	108	108
542A1903	PIPE CULVERTS, CLASS A, TYPE 3 18"	FOOT	100	100
542A2761	PIPE CULVERTS, CLASS A, TYPE 4 36"	FOOT	308	308
54213660	PRECAST REINFORCED CONCRETE FLARED END SECTIONS 15"	EACH	2	2
54213681	PRECAST REINFORCED CONCRETE FLARED END SECTIONS 36"	EACH	2	2
54260315	TRAVERSABLE PIPE GRATE FOR CONCRETE END SECTION	FOOT	34	34

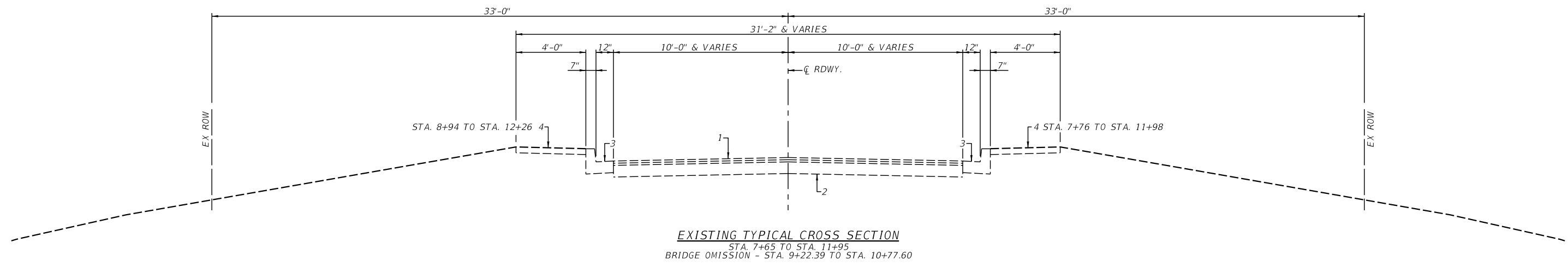
* SEE SPECIAL PROVISIONS

Δ SPECIALTY ITEMS

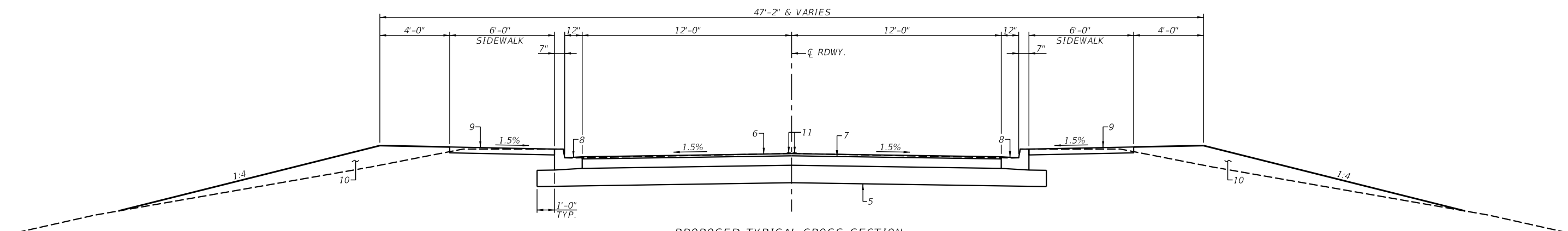
FILE NAME =	USER NAME = *USER*	DESIGNED -	REVISED -	 Veenstra & Kimm, Inc. Springfield, IL. Phone: (217)544-8033 IL. Design Firm No. 184-001939	SUMMARY OF QUANTITIES			F.A.S. RTE.	SECTION	COUNTY	TOTAL SHEETS	SHEET NO.
FILEL		DRAWN -	REVISED -					576	18-00069-00-BR	MENARD	34	4
	PLOT SCALE = *SCALE*	CHECKED -	REVISED -		SCALE: NONE	SHEET NO. 2 OF 3 SHEETS	STA. _____ TO STA. _____	FED. ROAD DIST. NO. _____ ILLINOIS FED. AID PROJECT				
	PLOT DATE = *DATE*	DATE -	REVISED -					CONTRACT NO. 93756				

CODE NO.	ITEM	UNIT	TOTAL QUANTITY	CONSTR. CODE
				ROADWAY 0004 S.N.
550A0070	STORM SEWERS, CLASS A, TYPE 1 15"	FOOT	110	110
56109210	WATER VALVES TO BE ADJUSTED	EACH	3	3
60219300	MANHOLES, TYPE A, 4'-DIAMETER, TYPE II FRAME AND GRATE	EACH	1	1
60236200	INLETS, TYPE A, TYPE 8 GRATE	EACH	1	1
60240301	INLETS, TYPE B, TYPE 8 GRATE	EACH	1	1
60240310	INLETS, TYPE B, TYPE II FRAME AND GRATE	EACH	1	1
60603800	COMBINATION CONCRETE CURB AND GUTTER, TYPE B-6.12	FOOT	884	884
* 63200310	GUARDRAIL REMOVAL	FOOT	267	267
67100100	MOBILIZATION	L SUM	1	1
Δ 78001110	PAINT PAVEMENT MARKING - LINE 4"	FOOT	183	183
Δ 78001130	PAINT PAVEMENT MARKING - LINE 6"	FOOT	130	130
* X2501000	SEEDING, CLASS 2 (SPECIAL)	ACRE	1.25	1.25
Δ* X2600012	REMOVE AND RELOCATE SIGN PANEL AND POLE ASSEMBLY	EACH	6	6
* X6022402	MANHOLES, TYPE A, 4'-DIAMETER, TYPE I FRAME, CLOSED LID, SPECIAL	EACH	1	1
* X7010216	TRAFFIC CONTROL AND PROTECTION, (SPECIAL)	L SUM	1	1
* Z0013798	CONSTRUCTION LAYOUT	L SUM	1	1

* SEE SPECIAL PROVISIONS
Δ SPECIALTY ITEMS



EXISTING TYPICAL CROSS SECTION
 STA. 7+65 TO STA. 11+95
 BRIDGE OMISSION - STA. 9+22.39 TO STA. 10+77.60

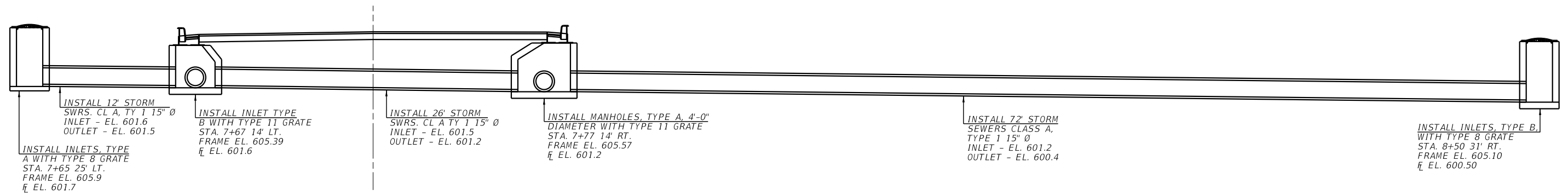


PROPOSED TYPICAL CROSS SECTION
 STA. 7+65 TO STA. 11+95

PAVEMENT LEGEND

- 1 - EX HMA OVERLAYS
- 2 - EX AGGREGATE BASE COURSE TYPE A
- 3 - EX COMB CONC CURB & GUTTER, TY B 6.12
- 4 - EX PCC CONCRETE SIDEWALK 4"
- 5 - PR AGGREGATE BASE COURSE, TY A 12"
- 6 - PR HMA SURFACE COURSE, IL-9.5, MIX "C" N50 1 1/2"
- 7 - PR HMA BASE COURSE 5 1/2"
- 8 - PR CONC CURB & GUTTER TYPE B 6.12
- 9 - PR PCC SIDEWALK 4 INCH
- 10 - PR EARTH EMBANKMENT
- 11 - PR PAINT PAVEMENT MARKING - LINE 4"

FILE NAME = *FILEL*	USER NAME = *USER*	DESIGNED -	REVISED -		Veenstra & Kimm, Inc. Springfield, IL. Phone: (217)544-8033 IL. Design Firm No. 184-001939	TYPICALS		F.A.S. RTE.	SECTION	COUNTY	TOTAL SHEETS	SHEET NO.	
		DRAWN -	REVISED -					576	18-00069-00-BR	MENARD	34	6	
		PLOT SCALE = *SCALE*	CHECKED -							CONTRACT NO. 93756			
		PLOT DATE = *DATE*	DATE -					SCALE:	SHEET NO. ___ OF ___ SHEETS	STA. _____ TO STA. _____	FED. ROAD DIST. NO. _ ILLINOIS FED. AID PROJECT		



DRAINAGE DETAILS

FILE NAME = *FILEL*	USER NAME = *USER*	DESIGNED -	REVISED -	 Veenstra & Kimm, Inc. Springfield, IL. Phone: (217)544-8033 IL. Design Firm No. 184-001939	DRAINAGE DETAILS		F.A.S. RTE.	SECTION	COUNTY	TOTAL SHEETS	SHEET NO.
	PLOT SCALE = *SCALE*	DRAWN -	REVISED -				576	18-00069-00-BR	MENARD	34	9
	PLOT DATE = *DATE*	CHECKED -	REVISED -		SCALE: 1/8"=1'-0" SHEET NO. ___ OF ___ SHEETS STA. _____ TO STA. _____		FED. ROAD DIST. NO. _ [ILLINOIS] FED. AID PROJECT		CONTRACT NO. 93756		
		DATE -	REVISED -								

EARTHWORK				
LOCATION	20200100 EARTH EXCAVATION	EARTH EXCAVATION ADJUSTED FOR SHRINKAGE	EMBANKMENT	EARTHWORK BALANCE WASTE (+) OR SHORTAGE (-)
	CU YD	CU YD	CU YD	CU YD
DOUGLAS AVENUE				
STA. 7+65 TO STA. 12+31	679	509	2774	2265
ABANDONED RAILROAD				
STA. 48+50 TO STA. 51+50	35	26	6815	6789
TOTAL	714	535	9589	9054

SEEDING AND TEMPORARY EROSION CONTROL ITEMS				
LOCATION	28000250 TEMPORARY EROSION CONTROL SEEDING	28000400 PERIMETER EROSION BARRIER	28000500 INLET AND PIPE PROTECTION	X2501000 SEEDING, CLASS 2 (SPECIAL)
	POUND	FOOT	EACH	ACRE
STA. 7+00 TO STA. 12+00 RT. (EDGE OF ROAD TO ROW/EASEMENT)	60			0.57
STA. 7+00 TO BLUE JAY ROAD LT.	5			0.03
BLUE JAY ROAD TO ANDREASEN DR. (INCLUDES ACCESS ROAD)	5			0.04
ANDREASEN DR. (STA. 9+00 19.6' RT. TO STA. 12+32 32' RT.)	55			0.51
STA. 7+70 28' RT. TO STA. 8+45 39' RT. ALONG EASEMENT		87		
STA. 8+45 39' RT. TO STA. 8+80 140' ALONG EASEMENT & EX. ROW		185		
STA. 9+48 160' RT. TO STA. 10+60 49' RT. ALONG EXIST. ROW		157		
STA. 10+60 49' RT. TO STA. 12+04 29' RT. ALONG EASEMENT		156		
STA. 9+00 50' LT. TO STA. 9+72 60' LT. SIDEWALK TO EASEMENT		89		
STA. 9+72 60' LT. TO STA. 10+65 170' LT. ALONG EXIST. ROW		145		
STA. 11+13 39' LT. TO STA. 11+73 110' RT. ALONG EXIST. ROW		85		
STA. 11+13 39' LT. TO STA. 12+31 24' LT. ALONG EASEMENT		120		
STA. 7+06 19' LT.			1	
STA. 7+30 22' RT.			1	
TOTAL	125	1024	2	1.15

USE 1.25 ACRE

20100500 TREE REMOVAL, ACRES	
LOCATION	TREE REMOVAL, ACRES
STA. 8+25 20' RT. TO STA. 8+80 150' RT. TO STA. 9+10 150' RT. TO STA. 10+75 20' RT.	0.35
STA. 9+10 20' LT. TO STA. 10+75 150' LT. TO STA. 11+40 100' LT. TO STA. 11+15 40' LT. TO STA. 11+85 30' LT.	0.38
TOTAL	0.73

USE 0.75 ACRE

20800150 TRENCH BACKFILL	
LOCATION	TRENCH BACKFILL CU. YD.
STA. 7+67 14' LT. TO STA. 7+77 14' RT.	6
TOTAL	6

RESURFACING SCHEDULE					
LOCATION	35501306 HOT-MIX ASPHALT BASE COURSE, 5 1/2"	40600275 BITUMINOUS MATERIALS (PRIME COAT)	40600290 BITUMINOUS MATERIALS (TACK COAT)	40600982 HOT-MIX ASPHALT SURFACE REMOVAL - BUTT JOINT	40604050 HOT-MIX ASPHALT SURFACE COURSE, IL-9.5FG, MIX "C", N50
	SQ. YD.	POUND	POUND	SQ. YD.	TON
STA. 7+65 TO STA. 11+95	1147	3137	258		97
BLUE JAY ROAD			58	128	11
ANDREASEN DRIVE			34	76	7
P.E. STA. 7+46 RT. TO ROW LINE		152			6
TOTAL	1147	3289	350	204	121

28100807 STONE DUMPED RIPRAP, CLASS A4	
LOCATION	STONE DUMPED RIPRAP TON
STA. 8+88 120' RT. TO STA. 9+00 130' RT.	17
TOTAL	17

42400100 PORTLAND CEMENT CONCRETE SIDEWALK	
LOCATION	PORTLAND CEMENT CONCRETE SIDEWALK 4 INCH SQ. FT.
STA. 7+71 TO STA. 12+06 RT.	2610
STA. 7+81 TO STA. 7+89.5 LT.	66
STA. 8+38 TO STA. 8+69 LT.	155
STA. 8+86 TO STA. 12+31 LT (INCLUDES ANDREASEN DRIVE)	2182
TOTAL	5013

42400800 DETECTABLE WARNINGS	
LOCATION	DETECTABLE WARNINGS SQ. FT.
STA. 7+88 TO STA. 7+90 25' LT.	10
STA. 8+38 TO STA. 8+40 25' LT.	10
STA. 8+67 TO STA. 8+69 25' LT.	10
STA. 8+86 TO STA. 8+88 25' LT.	10
STA. 7+69 19.5' RT. TO STA. 7+76 13.6' RT.	16
STA. 11+92 13.6' RT. TO STA. 12+06 19.5' RT.	20
STA. 12+25 13.6' LT. TO STA. 12+30.5 LT.	16
TOTAL	92

35100100 AGGREGATE BASE COURSE TYPE A	
LOCATION	AGGREGATE BASE COURSE TON
STA. 7+65 TO STA. 11+95	837
P.E. STA. 7+19 LT.	21
P.E. STA. 7+46 RT.	11
TEMPORARY ACCESS ROAD BLUE JAY RD. TO ANDREASEN DR.	28
TOTAL	897

FLARED END SECTION AND SCHEDULE			
LOCATION	54213660 PRECAST REINFORCED CONCRETE FLARED END SECTIONS 15"	54213681 PRECAST REINFORCED CONCRETE FLARED END SECTIONS 36"	54260315 TRAVERSABLE PIPE GRATE FOR CONCRETE END SECTION
	EACH	EACH	FOOT
STA. 7+06 19' LT.	1		
STA. 7+30 22' RT.	1		
STA. 9+04 114' RT.		1	17
STA. 11+03 122' LT.		1	17
TOTAL	2	2	34

56109210 WATER VALVES TO BE ADJUSTED	
LOCATION	WATER VALVES TO BE ADJUSTED EACH
STA. 8+68 27' RT.	1
STA. 8+70 31' RT.	1
STA. 8+70 21' RT.	1
TOTAL	3

REMOVAL SCHEDULE						
LOCATION	44000100 PAVEMENT REMOVAL	44000400 GUTTER REMOVAL	44000500 COMBINATION CURB AND GUTTER REMOVAL	44000600 SIDEWALK REMOVAL	50105220 PIPE CULVERT REMOVAL	63200310 GUARDRAIL REMOVAL
	SQ. YD.	FOOT	FOOT	SQ. FT.	FOOT	FOOT
STA. 7+65 TO STA. 9+22.4	412					
STA. 10+77.6 TO STA. 11+95	308					
P.E. STA. 7+46 RT. (CULVERT REMOVAL AND REPLACEMENT)	71					
STA. 7+71 TO STA. 9+03 LT.		132				
STA. 7+71 TO STA. 9+10.7 RT.			140	627		
STA. 9+03 TO STA. 9+35.0 LT.			32			
STA. 10+65.0 TO STA. 12+00 RT.			135	584		
STA. 10+90.2 TO STA. 12+00 LT.			110			
STA. 8+87 TO STA. 9+35 LT. (INCLUDES ANDREASEN DRIVE)				275		
STA. 10+90.2 TO STA. 12+26 LT.				661		
STA. 7+07 19' LT. TO STA. 7+27 18' LT.					40	
STA. 7+30 22' RT. TO STA. 7+70 22' RT.					62	
STA. 8+19 25' RT. TO STA. 8+76 54' RT.					20	
STA. 8+30 TO STA. 9+06 RT.						76
STA. 9+02 TO STA. 9+41 LT.						39
STA. 10+60 TO STA. 11+36 RT.						76
STA. 10+94 TO STA. 11+70 LT.						76
TOTAL	791	132	417	2147	122	267

PIPE CULVERT SCHEDULE			
LOCATION	542A0220 PIPE CULVERTS CLASS A, TYPE 1 15"	542A1903 PIPE CULVERTS CLASS A, TYPE 3 18"	542A2761 PIPE CULVERTS CLASS A, TYPE 4 36"
	FOOT	FOOT	FOOT
STA. 7+06 19' LT. TO STA. 7+66 14' LT.	60		
STA. 7+30 22' RT. TO STA. 7+77 14' RT.	48		
STA. 8+50 31' RT. TO STA. 8+74 129' RT.		100	
STA. 9+04 114' RT. TO STA. 11+03 122' LT.			308
TOTAL	108	100	308

550A0070 STORM SEWERS, CLASS A, TYPE 1 15" SCHEDULE				
FROM STRUCTURE		TO STRUCTURE		STORM SEWERS, CLASS A, TYPE 1, 15" FOOT
LOCATION	INVERT ELEV	LOCATION	INVERT ELEV	
STA. 7+65 25' LT.	601.7	STA. 7+67 14' LT.	601.6	12
STA. 7+67 14' LT.	601.55	STA. 7+77 14' RT.	601.2	26
STA. 7+77 14' RT.	601.15	8+50 31' RT.	600.40	72
TOTAL				110

DRAINAGE STRUCTURE SCHEDULE						
LOCATION	60219300 MANHOLES, TYPE A, 4" DIAMETER, TYPE 11 FRAME AND GRATE	60236200 INLETS, TYPE A, TYPE 8 GRATE	60240301 INLETS, TYPE B, TYPE 8 GRATE	60240310 INLETS, TYPE B, TYPE 11 FRAME & GRATE	X6022402 MANHOLES, TYPE A, 4"-DIAMETER, TYPE 1 FRAME CLOSED LID, SPECIAL	
	EACH	EACH	EACH	EACH	EACH	
7+77 14' RT.	1					
7+65 25' LT.		1				
8+50 31' RT.			1			
7+67 14' LT.				1		
8+59 28' RT.					1	
TOTAL	1	1	1	1	1	

PAINT PAVEMENT MARKING				
LOCATION	78001110 4" LINE 30' SKIP - 10' DASH YELLOW	78001110 4" LINE SOLID YELLOW	78001110 4" LINE SOLID WHITE	78001130 6" LINE CROSSWALK WHITE
	FOOT	FOOT	FOOT	FOOT
STA. 7+65 TO STA. 12+27 CENTERLINE	120			
BLUE JAY ROAD				
STA. 7+90 TO STA. 8+38 25' LT - 2 LINES				96
STA. 8+69 TO STA. 8+88 25' LT - 2 LINES				34
STA. 20+15 TO STA. 20+36 DOUBLE CENTERLINE		42		
STA. 20+15 TO STA. 20+36 LANE LINE			21	
TOTAL		183		130

60603800 COMBINATION CONCRETE CURB AND GUTTER, TYPE B-6.12	
LOCATION	COMBINATION CONCRETE CURB AND GUTTER TYPE B-6.12
	FOOT
STA. 7+73 TO STA. 11+95 RT.	422
STA. 7+65 TO STA. 12+27 LT.	462
TOTAL	884

X2600012 REMOVE AND RELOCATE SIGN PANEL AND POLE ASSEMBLY	
LOCATION	REM. & RELOCATE SIGN PANEL AND POLE ASSEMBLY
	EACH
STA. 7+72 33' LT. (STREET SIGN)	1
STA. 7+84 26' LT. (STOP SIGN)	1
STA. 7+81 20' RT. (INFORMATIONAL SIGN)	1
STA. 8+29 17' RT. (SPEED LIMIT SIGN)	1
STA. 8+53 21' LT. (PEDESTRIAN CROSSWALK SIGN)	1
STA. 8+99 23' LT. (STREET SIGN)	1
TOTAL	6

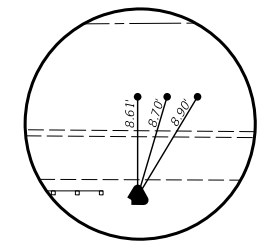
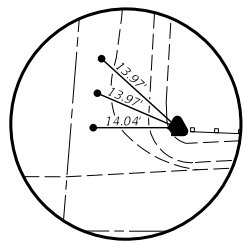
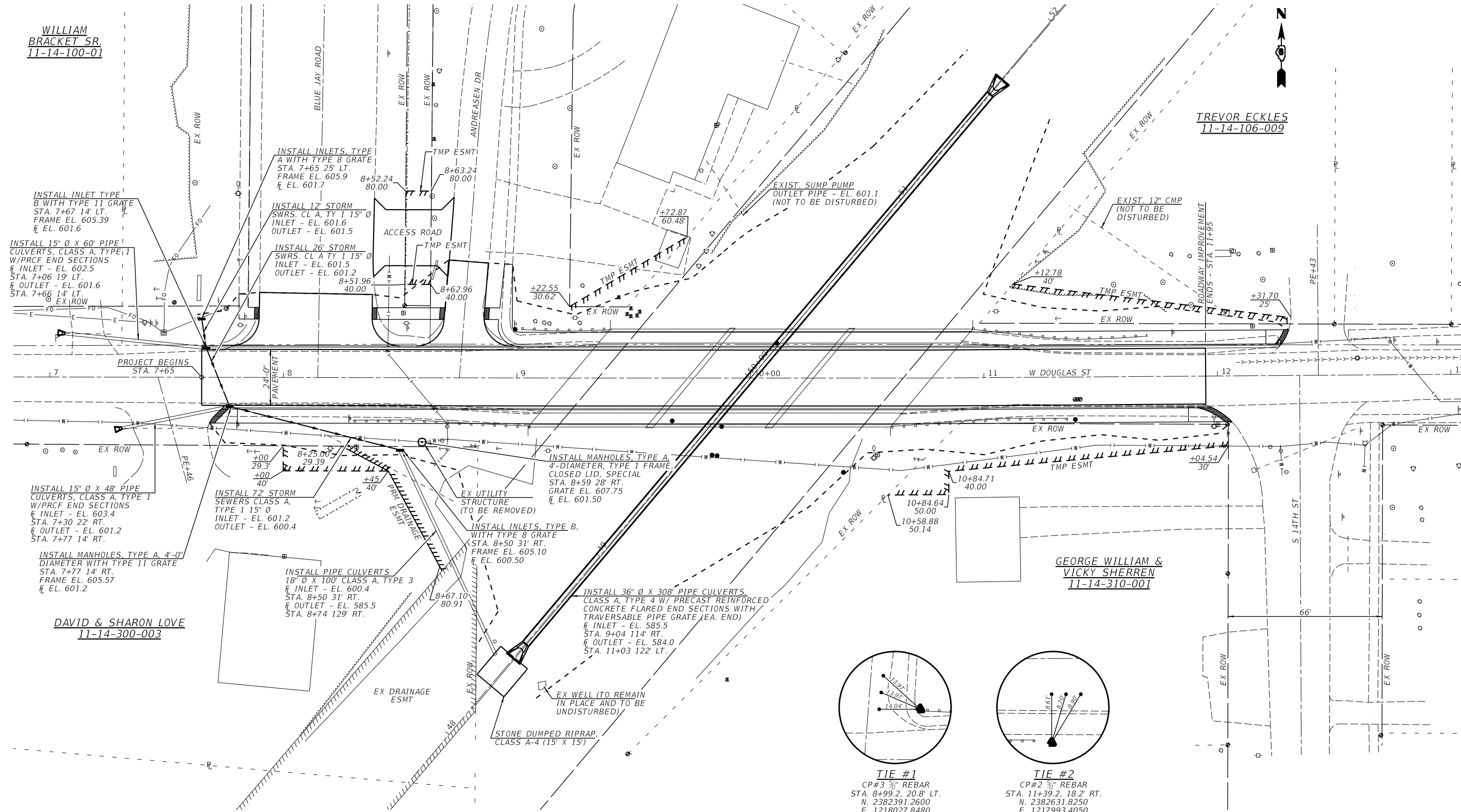
WILLIAM
BRACKET SR.
11-14-100-01

TREVOR ECKLES
11-14-106-009

GEORGE WILLIAM &
VICKY SHERREN
11-14-310-001

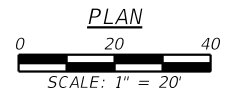
DAVID & SHARON LOVE
11-14-300-003

CITY OF PETERSBURG
11-14-500-015



TIE #1
CP#3 3/8" REBAR
STA. 8+99.2, 20.8' LT.
N. 2382391.2600
E. 1218027.8480
ELEV. 608.39

TIE #2
CP#2 3/8" REBAR
STA. 11+39.2, 18.2' RT.
N. 2382631.8250
E. 1217993.4050
ELEV. 608.35

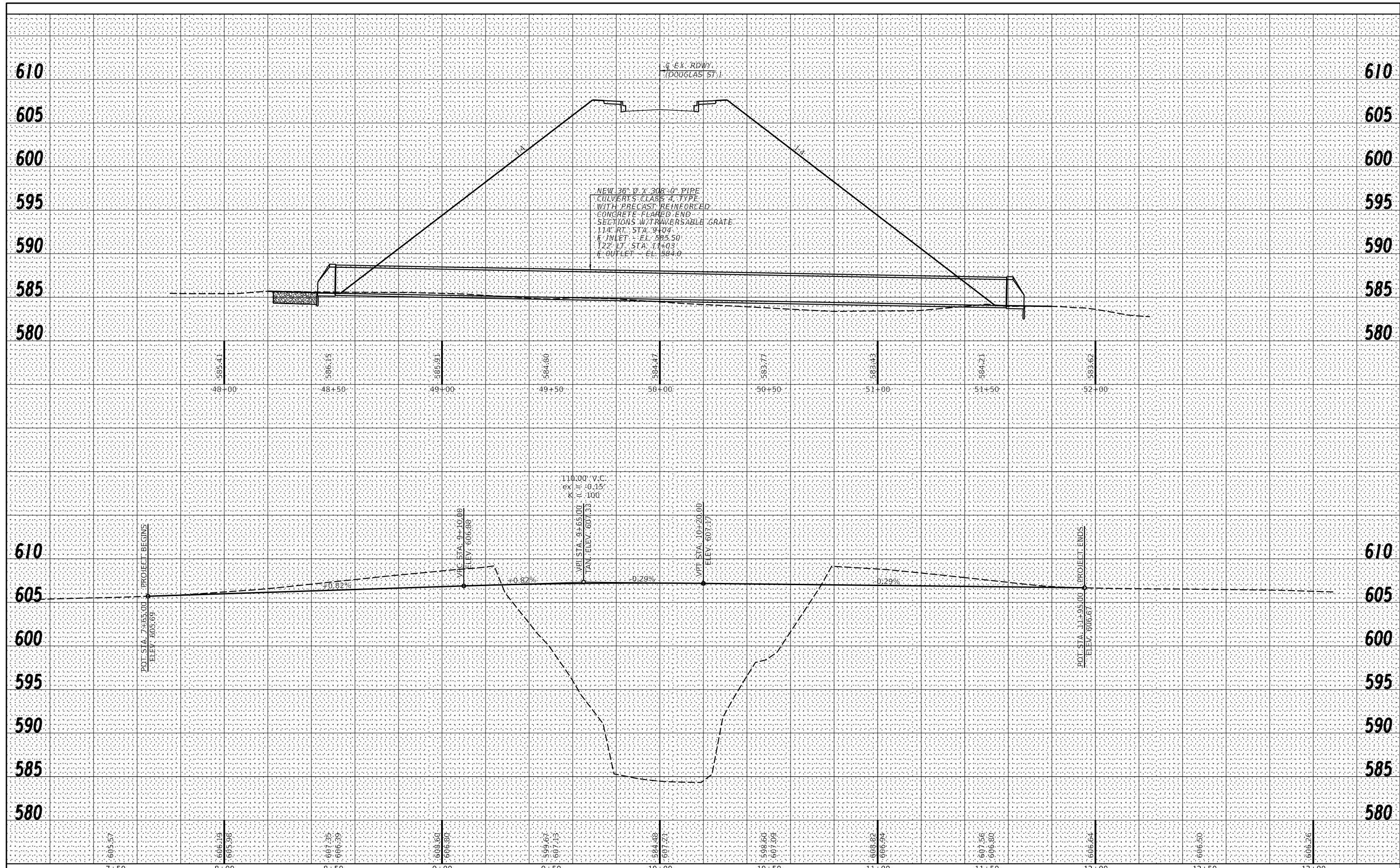


NOTE: SEE CONSTRUCTION REQUIREMENTS AND REMOVAL OF EXISTING STRUCTURES SPECIAL PROVISIONS.

FILE NAME =	USER NAME = *USER*	DESIGNED -	REVISED -		Veenstra & Kimm, Inc. Springfield, IL. Phone: (217)544-8033 IL. Design Firm No. 184-001939	PLAN	F.A.S. RTE.	SECTION	COUNTY	TOTAL SHEETS	SHEET NO.
*FILE#		DRAWN -	REVISED -				576	18-00069-00-BR	MENARD	34	12
PLOT SCALE = *SCALE*		CHECKED -	REVISED -				CONTRACT NO. 93756				
PLOT DATE = *DATE*		DATE -	REVISED -				FED. ROAD DIST. NO. ILLINOIS FED. AID PROJECT				

BY: _____ DATE: _____
 SURVEYED _____
 PLOTTED _____
 TEMPLATE _____
 NOTE BOOK _____
 AREAS CHECKED _____
 NO. _____

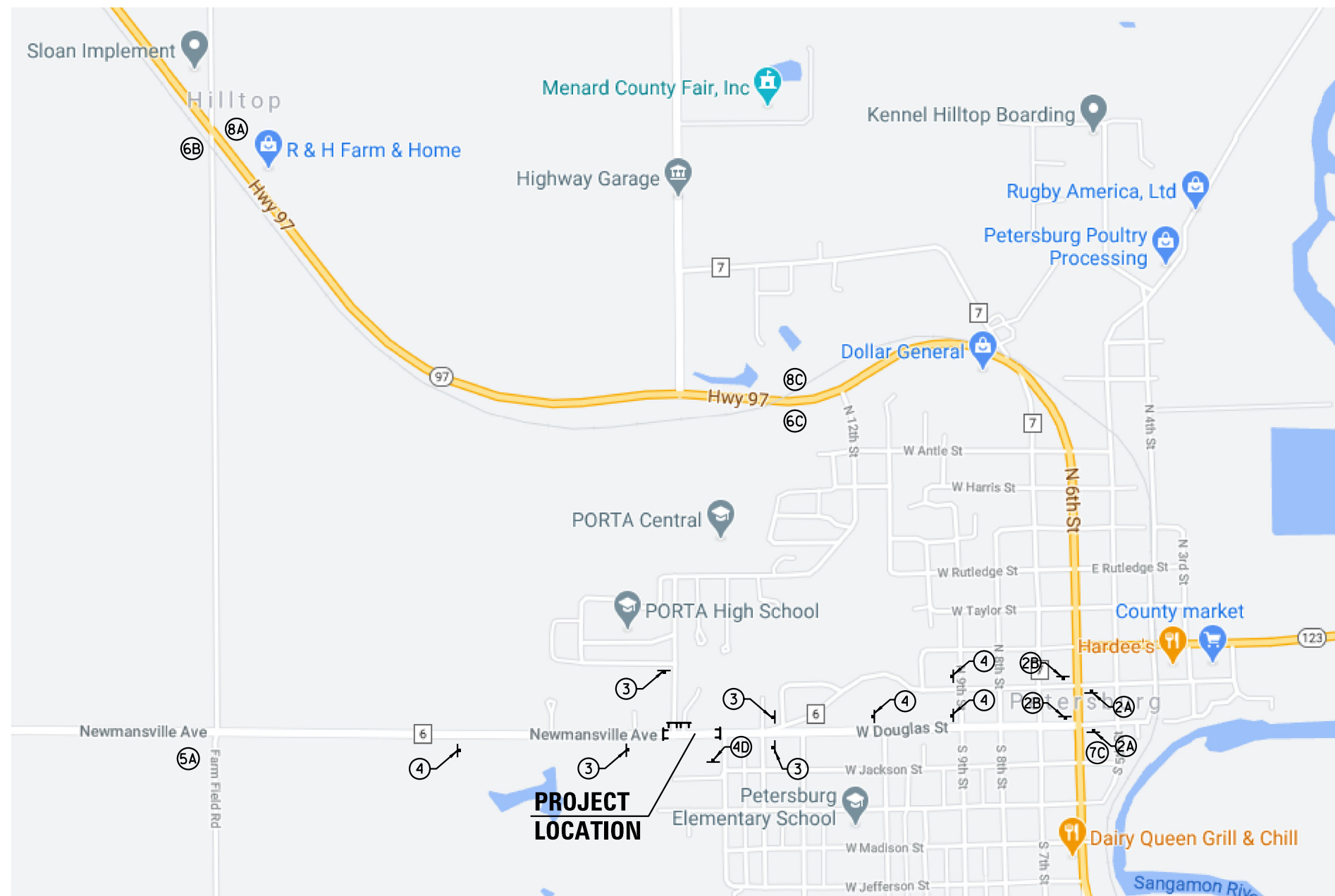
BY: _____ DATE: _____
 SURVEYED _____
 PLOTTED _____
 TEMPLATE _____
 NOTE BOOK _____
 AREAS CHECKED _____
 NO. _____



FILE NAME =	USER NAME = *USER*	DESIGNED -	REVISED -	 Veenstra & Kimm, Inc. Springfield, IL. Phone: (217)544-8033 IL. Design Firm No. 184-001939	PROFILE		F.A.S. RTE.	SECTION	COUNTY	TOTAL SHEETS	SHEET NO.	
FILEL		DRAWN -	REVISED -		SCALE: _____	SHEET NO. ____ OF ____ SHEETS	STA. _____ TO STA. _____	576	18-00069-00-BR	MENARD	35	13
		CHECKED -	REVISED -					CONTRACT NO. 93756				
		DATE -	REVISED -					FED. ROAD DIST. NO. [ILLINOIS] FED. AID PROJECT				

TRAFFIC CONTROL NOTES

1. ALL SIGNING SHALL BE IN ACCORDANCE WITH THE APPLICABLE PROVISIONS OF THE STATE OF ILLINOIS "STANDARD SPECIFICATIONS FOR ROAD AND BRIDGE CONSTRUCTION" ADOPTED JANUARY 1, 2016. THE DETAILS IN THESE PLANS, AND THE LATEST EDITION OF THE STATE OF ILLINOIS "MANUAL ON UNIFORM TRAFFIC CONTROL DEVICES".
2. THE ENGINEER SHALL BE NOTIFIED IN WRITING AT LEAST THREE WEEKS PRIOR TO THE DAY THE ROAD IS TO BE CLOSED. THE ENGINEER WILL CONTACT THE BUREAU OF OPERATIONS AS WELL AS LOCAL, TOWNSHIP AND COUNTY OFFICIALS CONCERNING THE CLOSURE.
3. THE CONTRACTOR SHALL SUPPLY TO THE ENGINEER THE NAMES AND PHONE NUMBERS OF HIS REPRESENTATIVES ON THE CONSTRUCTION SITE AND HIS REPRESENTATIVE RESPONSIBLE FOR THE TRAFFIC CONTROL SIGNING AND MAINTENANCE PRIOR TO THE START OF WORK.
4. THE ROAD SHALL NOT BE CLOSED UNTIL ALL SIGNING IS ERECTED IN ACCORDANCE WITH HIGHWAY STANDARD BLR 21 AND WITH THE ROAD CLOSURE PLAN AND INSPECTED AND APPROVED BY THE ENGINEER.
5. ALL EXISTING SIGNING THAT IS NOT APPLICABLE WHILE THE ROAD CLOSURE IS IN EFFECT SHALL BE COMPLETELY COVERED BY THE CONTRACTOR.
6. ALL ROAD CLOSURE SIGNING SHALL BE MOUNTED AS INDICATED.
7. ALL ROAD CLOSURE SIGNING EXCEPT REGULATORY SIGNS SHALL HAVE BLACK LEGENDS ON FLUORESCENT ORANGE BACKGROUNDS AND STANDARD BLACK BORDERS. ALL ROAD CLOSURE SIGNING SHALL BE NEW OR LIKE NEW CONDITION.
8. THE SIZE OF ALL SIGNS NOT SPECIFIED IN THESE PLANS SHALL BE AS REQUIRED BY THE ILLINOIS MANUAL ON UNIFORM TRAFFIC CONTROL DEVICES AND APPLICABLE TRAFFIC STANDARDS.
9. AS A MINIMUM, ALL AMBER FLASHING LIGHTS THAT ARE REQUIRED FOR THE ROAD CLOSURE SIGNING SHALL MEET THE REQUIREMENTS FOR A TYPE A - LOW INTENSITY FLASHING LIGHTS IN ARTICLE 1084.01 OF THE STANDARD SPECIFICATIONS. ALL LIGHTS SHALL OPERATE DURING HOURS OF DARKNESS. ONLY LIGHTS THAT HAVE BEEN APPROVED BY THE ILLINOIS DEPARTMENT OF TRANSPORTATION SHALL BE USED.
10. THE TYPE III BARRICADES USED AT POINTS OF CLOSURE TO THRU TRAFFIC ONLY SHALL NOT EXCEED 8 FEET IN WIDTH EACH FOR A SINGLE APPROACH LANE. ALL BARRICADES AT THESE LOCATIONS SHALL HAVE REFLECTORIZED STRIPING ON BOTH SIDES OF THE BARRICADE.
11. THE "ROAD CLOSED" SIGN ON A TYPE III BARRICADE SHALL BE MOUNTED ACCORDING TO STANDARD 701901. ALL TYPE III BARRICADES SHALL HAVE TWO AMBER TYPE A - LOW INTENSITY FLASHING LIGHTS.
12. CONSTRUCTION EQUIPMENT SHALL NOT BE PARKED IMMEDIATELY BEHIND THE TYPE III BARRICADES DURING NON-WORKING HOURS. IN ANY EVENT, ARTICLES 701 THRU 703 OF THE STANDARD SPECIFICATIONS SHALL APPLY.
13. THE ENGINEER SHALL BE NOTIFIED AT LEAST TWO WEEKS BEFORE THE ROAD IS TO BE OPENED TO TRAFFIC. THE ENGINEER WILL CONTACT THE MENARD COUNTY HIGHWAY DEPARTMENT.



ROAD CLOSURE PLAN
NOT TO SCALE

ROAD CLOSURE SIGNS

<p>①</p> <p>R11-3a POST MOUNTED</p>	<p>②</p> <p>R11-3a POST MOUNTED</p>	<p>⑤</p> <p>NEWMANVILLE AVE CLOSED AHEAD DETOUR M4-8 (0) (24x12) (SEE DIRECTIONAL ARROWS) POST MOUNTED</p>	<p>⑥</p> <p>DETOUR NEWMANVILLE AVENUE CUSTOM REGULATORY SIGN (30x24) (SEE DIRECTIONAL ARROWS) POST MOUNTED</p>
<p>③</p> <p>W20-3 (F0) (48x48) SIGN WITH FLASHING LIGHT POST MOUNTED</p>	<p>④</p> <p>W20-3 (F0) (48x48) SIGN WITH FLASHING LIGHT POST MOUNTED</p>	<p>⑦</p> <p>DOUGLAS STREET CLOSED AHEAD DETOUR CUSTOM REGULATORY SIGN (30x24)</p>	<p>⑧</p> <p>DETOUR DOUGLAS STREET CUSTOM REGULATORY SIGN (30x24) (SEE DIRECTIONAL ARROWS) POST MOUNTED</p>

DIRECTIONAL ARROWS

<p>Ⓐ</p> <p>M6-1 (21x15)</p>	<p>Ⓑ</p> <p>M6-1 (21x15)</p>	<p>Ⓒ</p> <p>M6-3 (21x15)</p>	<p>Ⓓ</p> <p>M5-1 (21x15)</p>	<p>Ⓔ</p> <p>M5-1 (21x15)</p>
------------------------------	------------------------------	------------------------------	------------------------------	------------------------------

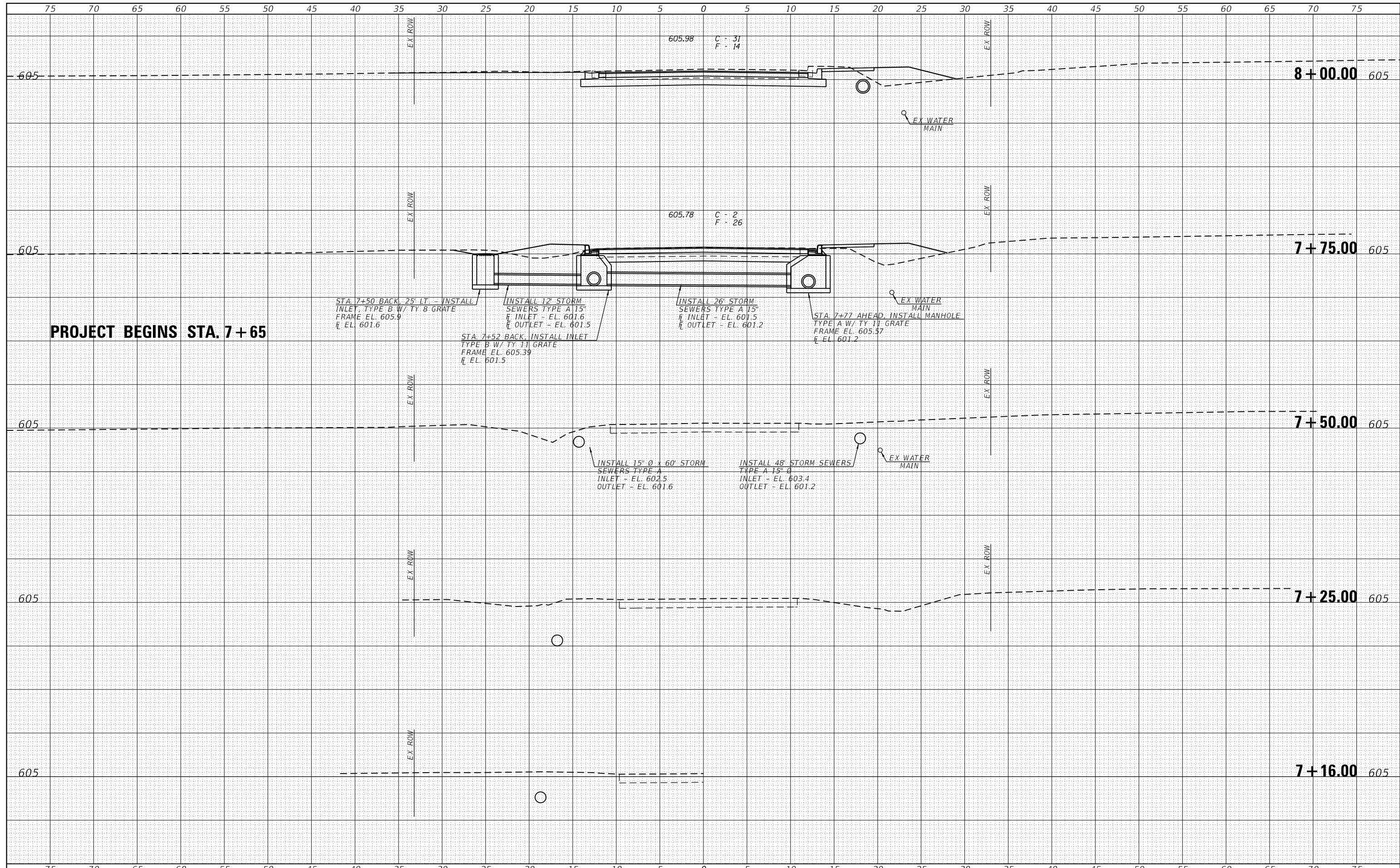
LEGEND

- ⊠ SIGN POST MOUNTED
- ⊞ TYPE III BARRICADE

FILE NAME = #FILE#	USER NAME = #USER#	DESIGNED -	REVISED -	<p>Veenstra & Kimm, Inc. Springfield, IL. Phone: (217)544-8033 IL. Design Firm No. 184-001939</p>	SIGN AND BARRICADE LOCATION PLAN			F.A.S. RTE. 576	SECTION 18-00069-00-BR	COUNTY MENARD	TOTAL SHEETS 34	SHEET NO. 14
	PLOT SCALE = #SCALE#	DRAWN -	REVISED -		SCALE: 1/8"=1'-0"	SHEET NO.	OF SHEETS	STA.	TO STA.	CONTRACT NO. 93756		
	PLOT DATE = #DATE#	CHECKED -	REVISED -									
		DATE -	REVISED -									

DATE	
BY	
SURVEYED	
PLOTTED	
TEMPLATE	
AREAS	
CHECKED	
NO.	

DATE	
BY	
SURVEYED	
PLOTTED	
TEMPLATE	
AREAS	
CHECKED	
NO.	

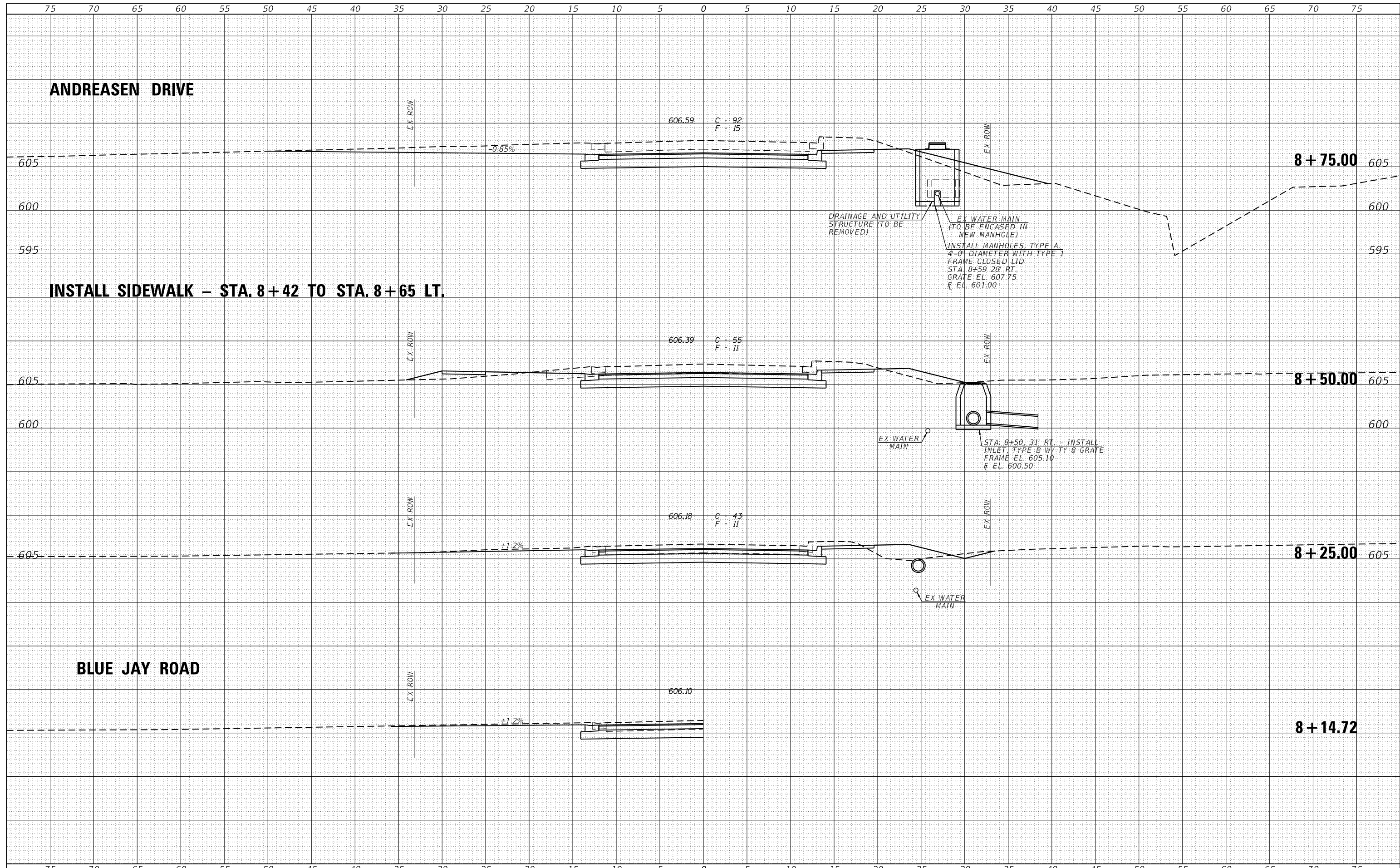


PROJECT BEGINS STA. 7+65

FILE NAME =	USER NAME = ckohlrus	DESIGNED -	REVISED -	 Veenstra & Kimm, Inc. Springfield, IL. Phone: (217)544-8033 IL. Design Firm No. 184-001939	CROSS SECTIONS (WEST DOUGLAS STREET)		F.A.S. RTÉ.	SECTION	COUNTY	TOTAL SHEETS	SHEET NO.
Z:\0 V and K Jobs\5307 Menard County West Douglas Avenue Bridge\CADD Sheets\5307-sht-xsc.dwg	DRAWN -	REVISED -	REVISED -		576	18-00069-00-BR	MENARD	34	15		
PLOT SCALE = 10.0000' / in.	CHECKED -	REVISED -	REVISED -		CONTRACT NO. 93756						
PLOT DATE = 9/25/2020	DATE -	REVISED -	REVISED -		FED. ROAD DIST. NO. ILLINOIS FED. AID PROJECT						
SCALE: 1"=5'				SHEET NO. OF SHEETS		STA. 7+25.00 TO STA. 8+14.72					

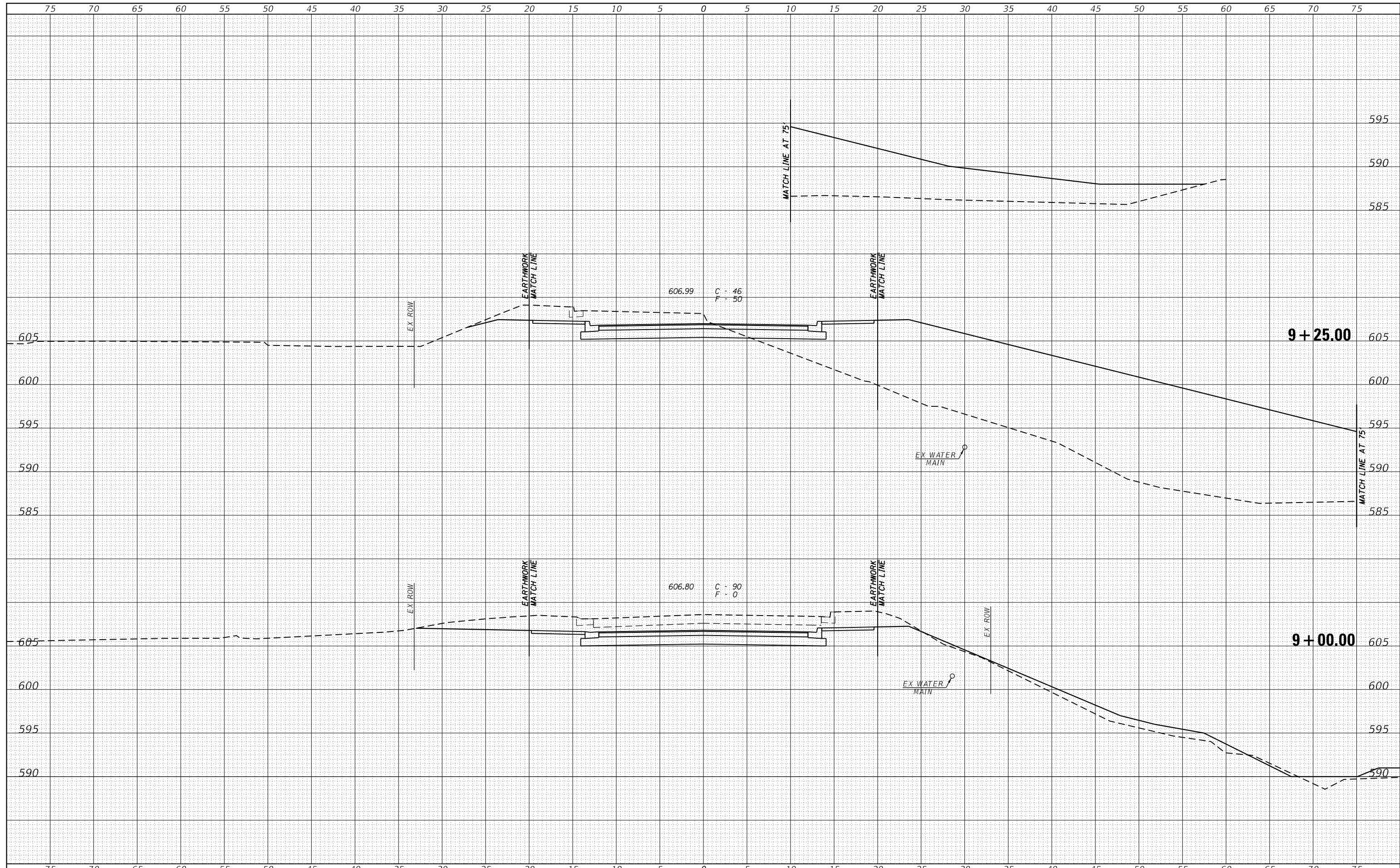
DATE	
BY	
ORIGINAL SURVEY	
SURVEYED	
PLOTTED	
TEMPLATE	
AREAS	
CHECKED	
NO.	

DATE	
BY	
ORIGINAL SURVEY	
SURVEYED	
PLOTTED	
TEMPLATE	
AREAS	
CHECKED	
NO.	



DATE	
BY	
SURVEYED	
PLOTTED	
TEMPLATE	
AREAS	
CHECKED	
FINISH	
NO.	

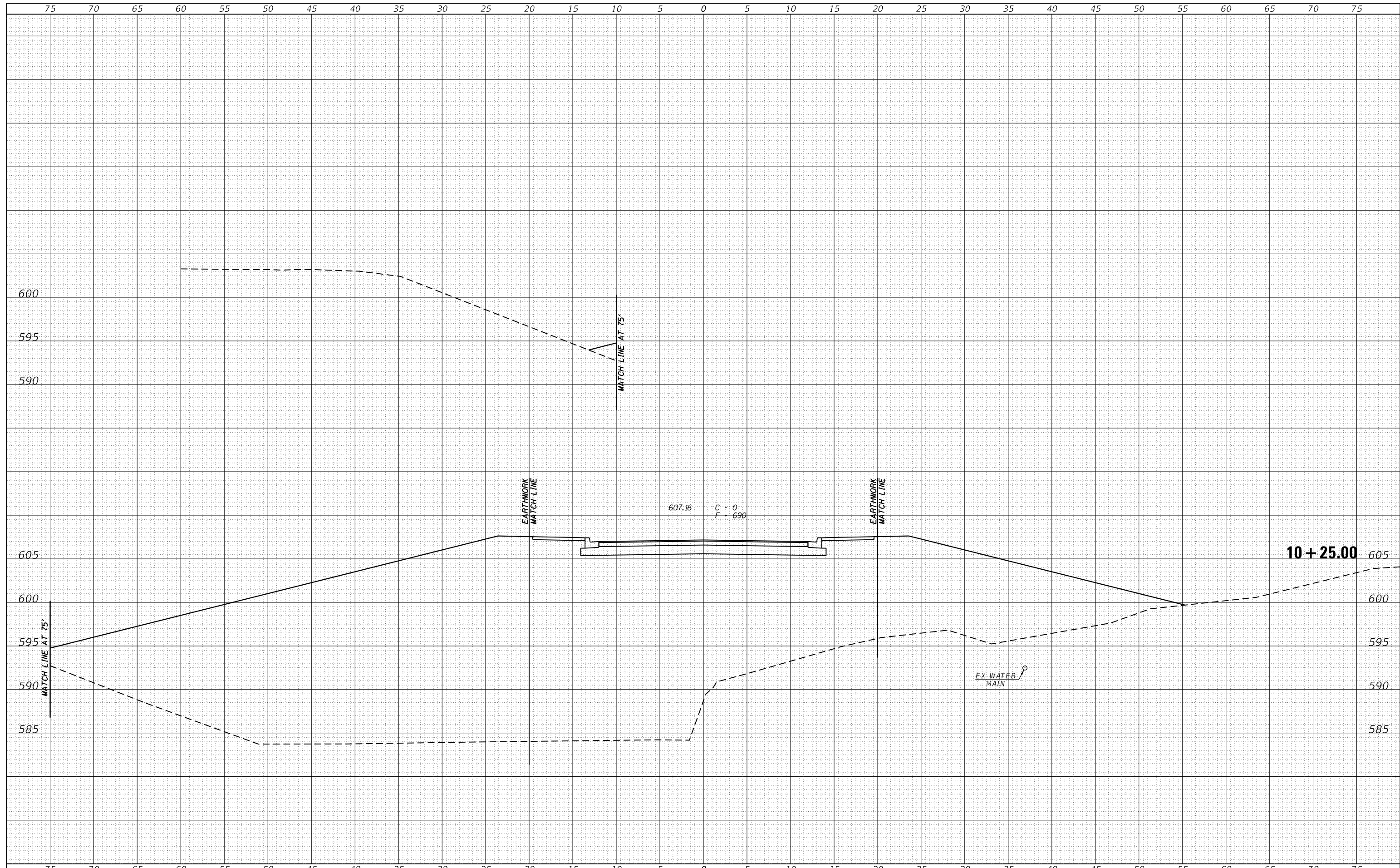
DATE	
BY	
SURVEYED	
PLOTTED	
TEMPLATE	
AREAS	
CHECKED	
ORIGINAL	
NO.	



FILE NAME =	USER NAME = ckohlrus	DESIGNED -	REVISIED -		Veenstra & Kimm, Inc. Springfield, IL. Phone: (217)544-8033 IL. Design Firm No. 184-001939			F.A.S. SECTION COUNTY TOTAL SHEETS SHEET NO. 576 18-00069-00-BR MENARD 34 17	
Z:\0 V and K Jobs\5307 Menard County West Douglas Avenue Bridge\CADD Sheets\5307-sht-xsc.dwg	DRAWN -	REVISIED -	SCALE: 1"=5' SHEET NO. OF SHEETS STA. 9+00.00 TO STA. 9+25.00					FED. ROAD DIST. NO. ILLINOIS FED. AID PROJECT	
PLOT SCALE = 10.0000' / in.	CHECKED -	REVISIED -							
PLOT DATE = 9/25/2020	DATE -	REVISIED -							

DATE	
BY	
FINAL SURVEY	SURVEYED
NOTE BOOK	PLOTTED
NO.	TEMPLATE
	AREAS
	CHECKED

DATE	
BY	
ORIGINAL SURVEY	SURVEYED
NOTE BOOK	PLOTTED
NO.	TEMPLATE
	AREAS
	CHECKED



FILE NAME = Z:\0 V and K Jobs\5307 Menard County West Douglas Avenue Bridge\CADD Sheets\5307-sht-xsec.dwg
 USER NAME = ckohlrus

DESIGNED -	REVISOR -
DRAWN -	REVISOR -
CHECKED -	REVISOR -
DATE -	REVISOR -

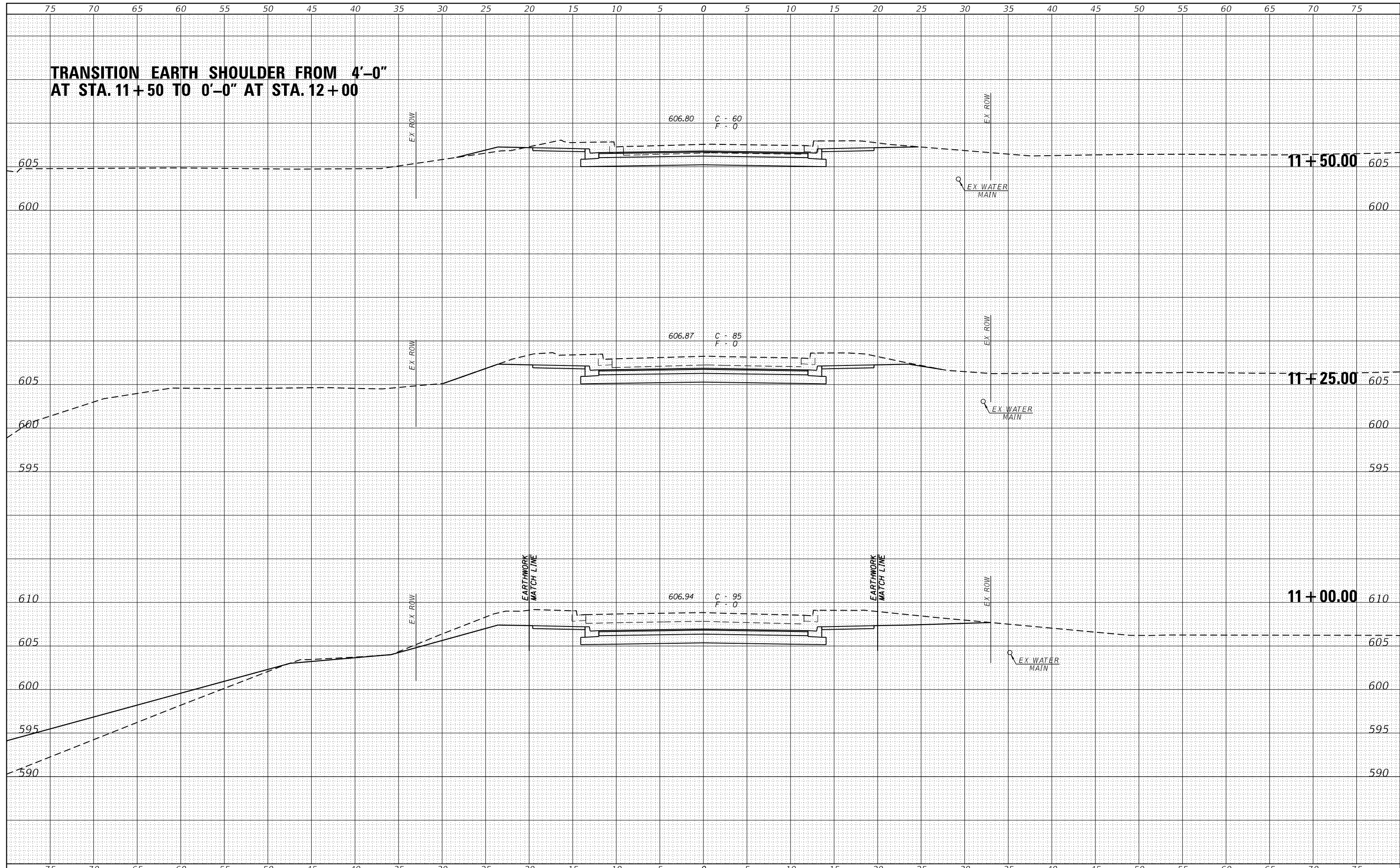


Veenstra & Kimm, Inc.
 Springfield, IL. Phone: (217)544-8033
 IL. Design Firm No. 184-001939

CROSS SECTIONS
(WEST DOUGLAS STREET)
 SCALE: 1"=5' SHEET NO. OF SHEETS STA. TO STA.

F.A.S. RTE.	SECTION	COUNTY	TOTAL SHEETS	SHEET NO.
576	18-00069-00-BR	MENARD	34	21
FED. ROAD DIST. NO.				ILLINOIS FED. AID PROJECT
CONTRACT NO. 93756				

TRANSITION EARTH SHOULDER FROM 4'-0" AT STA. 11+50 TO 0'-0" AT STA. 12+00

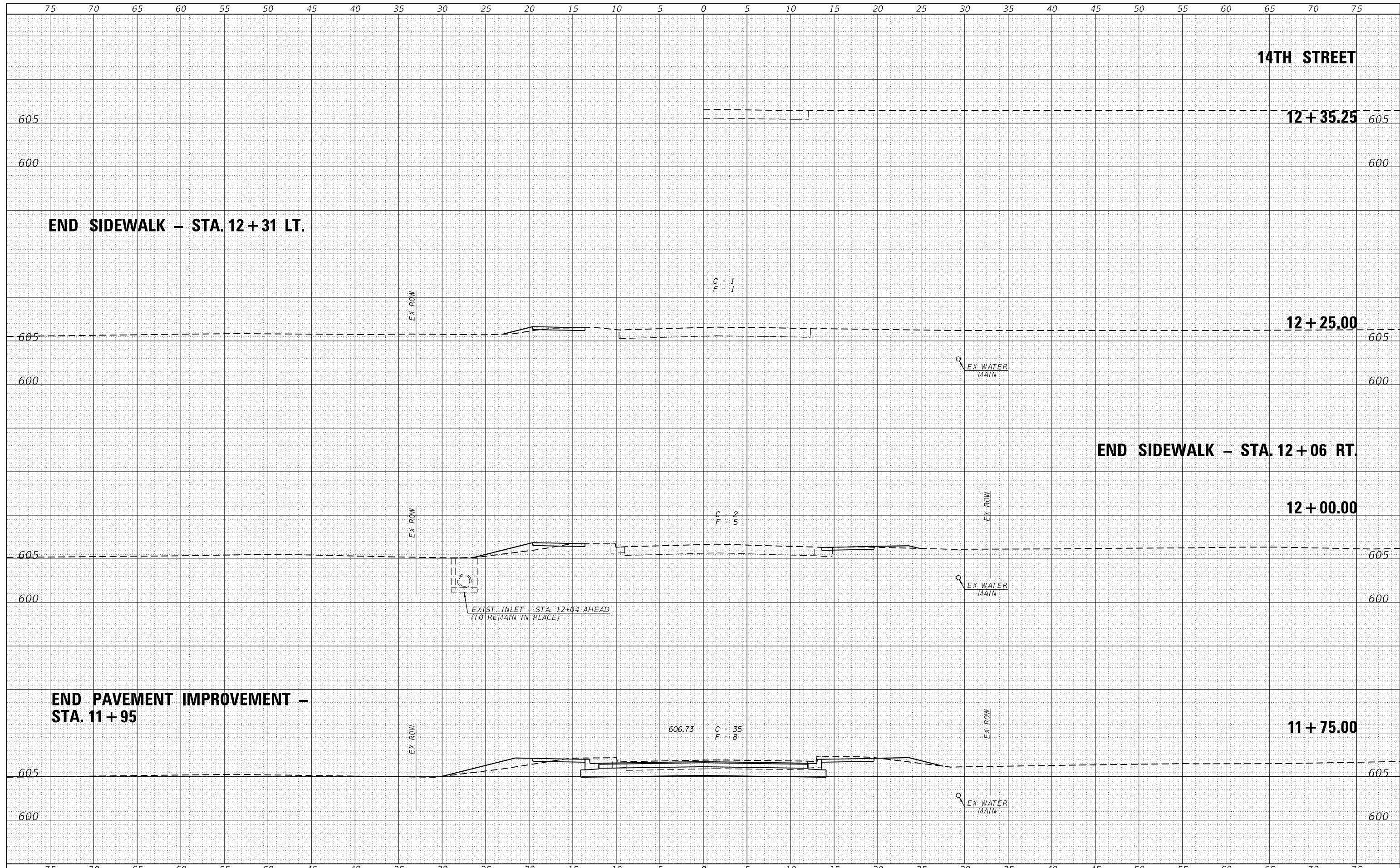


DATE	BY	FINAL SURVEY	SURVEYED
		NOTE BOOK	PLOTTED
		AREAS CHECKED	AREAS CHECKED

DATE	BY	ORIGINAL SURVEY	SURVEYED
		NOTE BOOK	PLOTTED
		AREAS CHECKED	AREAS CHECKED

DATE	
BY	
SURVEYED	
PLOTTED	
TEMPLATE	
AREAS CHECKED	
FINAL SURVEY	
NOTE BOOK	
NO.	

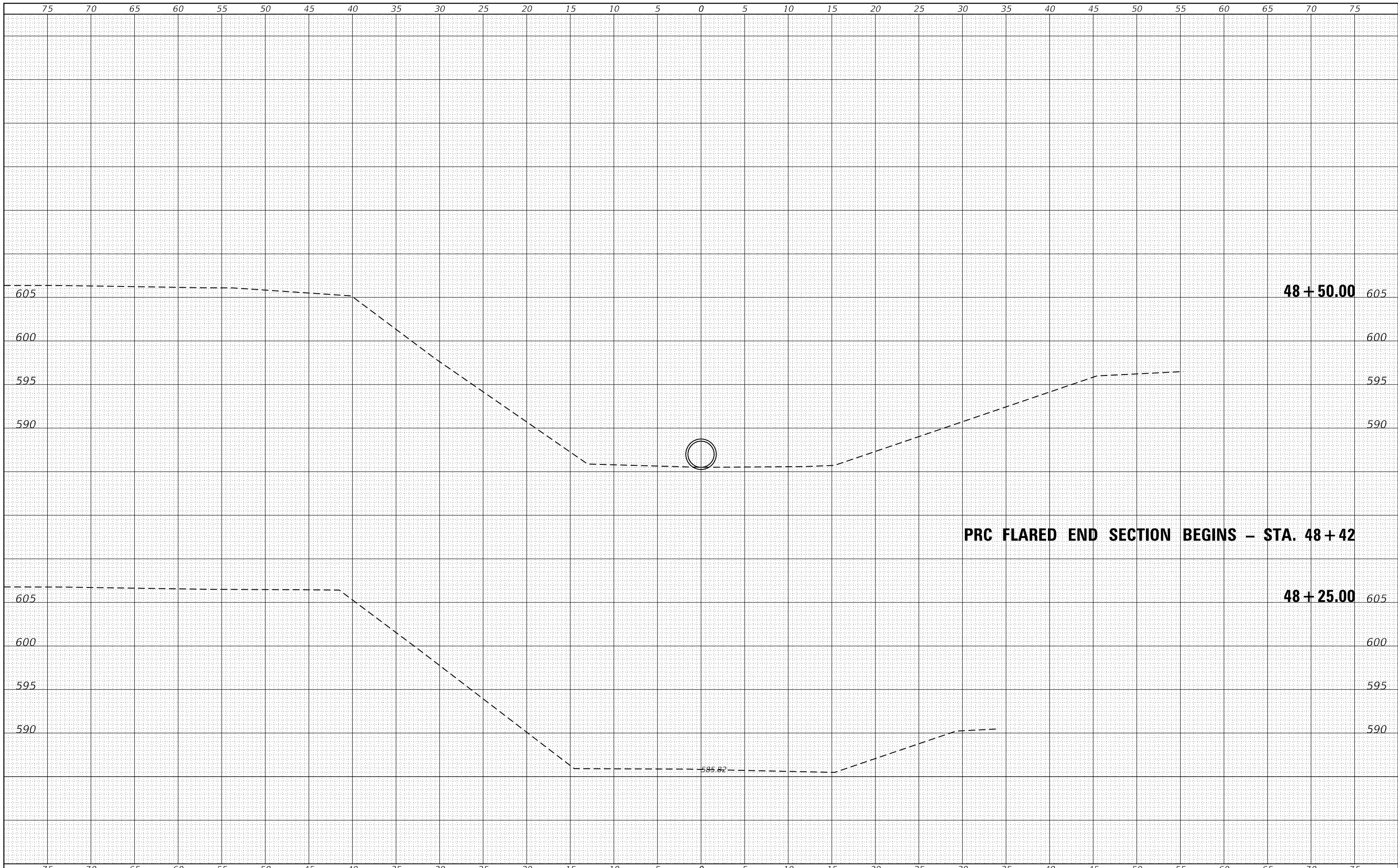
DATE	
BY	
SURVEYED	
PLOTTED	
TEMPLATE	
AREAS CHECKED	
ORIGINAL SURVEY	
NOTE BOOK	
NO.	



FILE NAME =	USER NAME = ckohlrus	DESIGNED -	REVISED -		Veenstra & Kimm, Inc. Springfield, IL. Phone: (217)544-8033 IL. Design Firm No. 184-001939			F.A.S. RTÉ. SECTION COUNTY TOTAL SHEETS SHEET NO.	
Z:\0 V and K Jobs\5307 Menard County West Douglas Avenue Bridge\CADD Sheets\5307-sht-xsc.dwg	DRAWN -	REVISED -	576 18-00069-00-BR MENARD 34 25						
PLOT SCALE = 10.0000' / in.	CHECKED -	REVISED -	CONTRACT NO. 93756						
PLOT DATE = 9/25/2020	DATE -	REVISED -	FED. ROAD DIST. NO. ILLINOIS FED. AID PROJECT						
SCALE: 1"=5'				SHEET NO. OF SHEETS		STA. 11+50.00 TO STA. 12+25.00			

DATE	
BY	
SURVEYED	
PLOTTED	
TEMPLATE	
AREAS	
CHECKED	
FINAL SURVEY NOTE BOOK NO.	

DATE	
BY	
SURVEYED	
PLOTTED	
TEMPLATE	
AREAS	
CHECKED	
ORIGINAL SURVEY NOTE BOOK NO.	

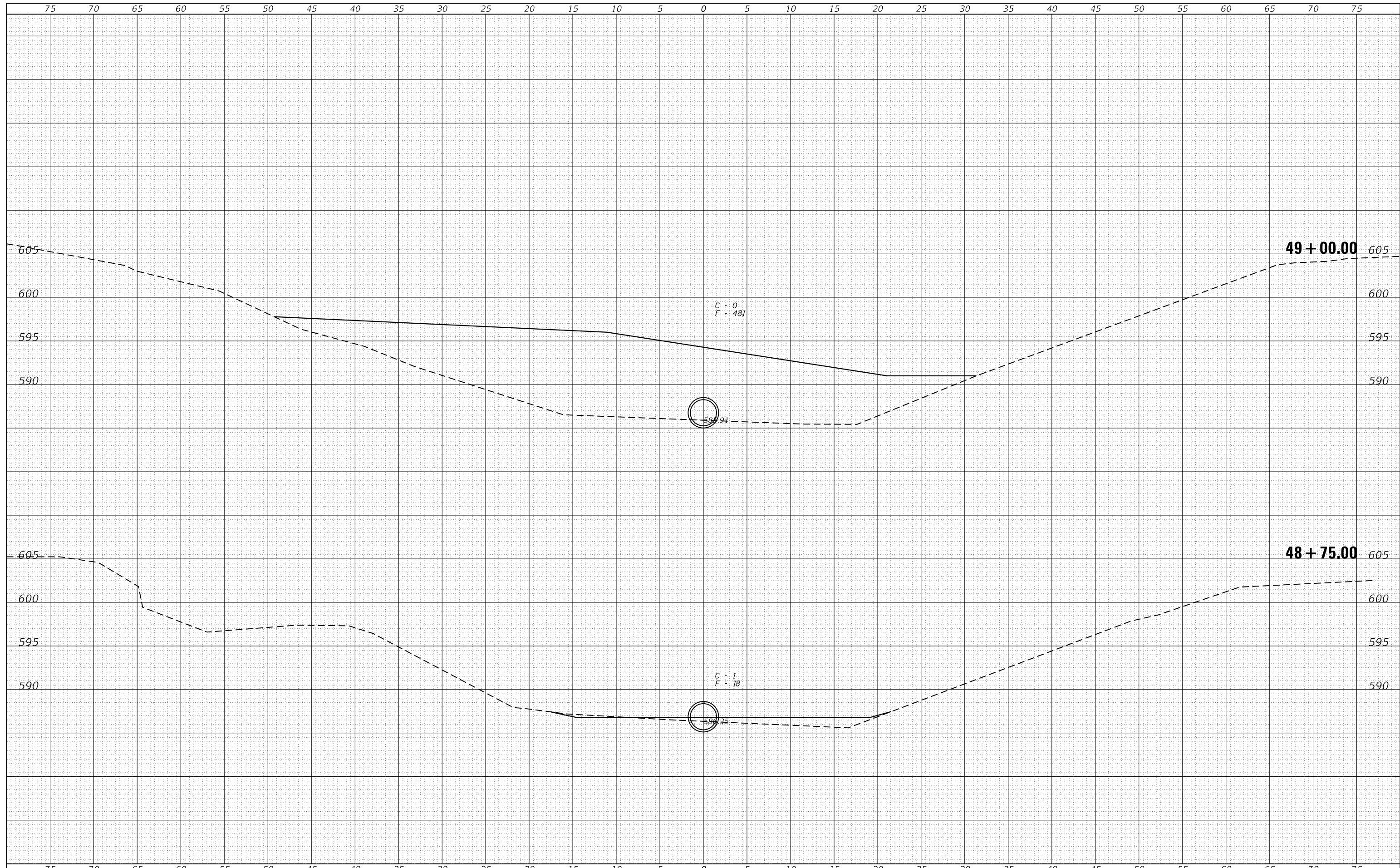


PRC FLARED END SECTION BEGINS - STA. 48+42

FILE NAME =	USER NAME = ckohlrus	DESIGNED -	REVISD -	<p>Veenstra & Kimm, Inc. Springfield, IL. Phone: (217)544-8033 IL. Design Firm No. 184-001939</p>	<p align="center">CROSS SECTIONS (ABANDONED RAILROAD)</p>		F.A.S. RTE.	SECTION	COUNTY	TOTAL SHEETS	SHEET NO.
Z:\0 V and K Jobs\5307 Menard County West Douglas Avenue Bridge\CADD Sheets\5307-sht-xsc-DRAWN.dgn		REVISD -	REVISD -		576	18-00069-00-BR	MENARD	34	26		
PLOT SCALE = 10.0000' / in.	CHECKED -	REVISD -	REVISD -		CONTRACT NO. 93756						
PLOT DATE = 9/25/2020	DATE -	REVISD -	REVISD -		FED. ROAD DIST. NO. ILLINOIS FED. AID PROJECT						
SCALE: 1"=5'				SHEET NO. OF SHEETS		STA. 48+25.00 TO STA. 48+50.00					

DATE	
BY	
FINAL SURVEY	SURVEYED
NOTE BOOK	PLOTTED
NO.	TEMPLATE
	AREAS
	CHECKED

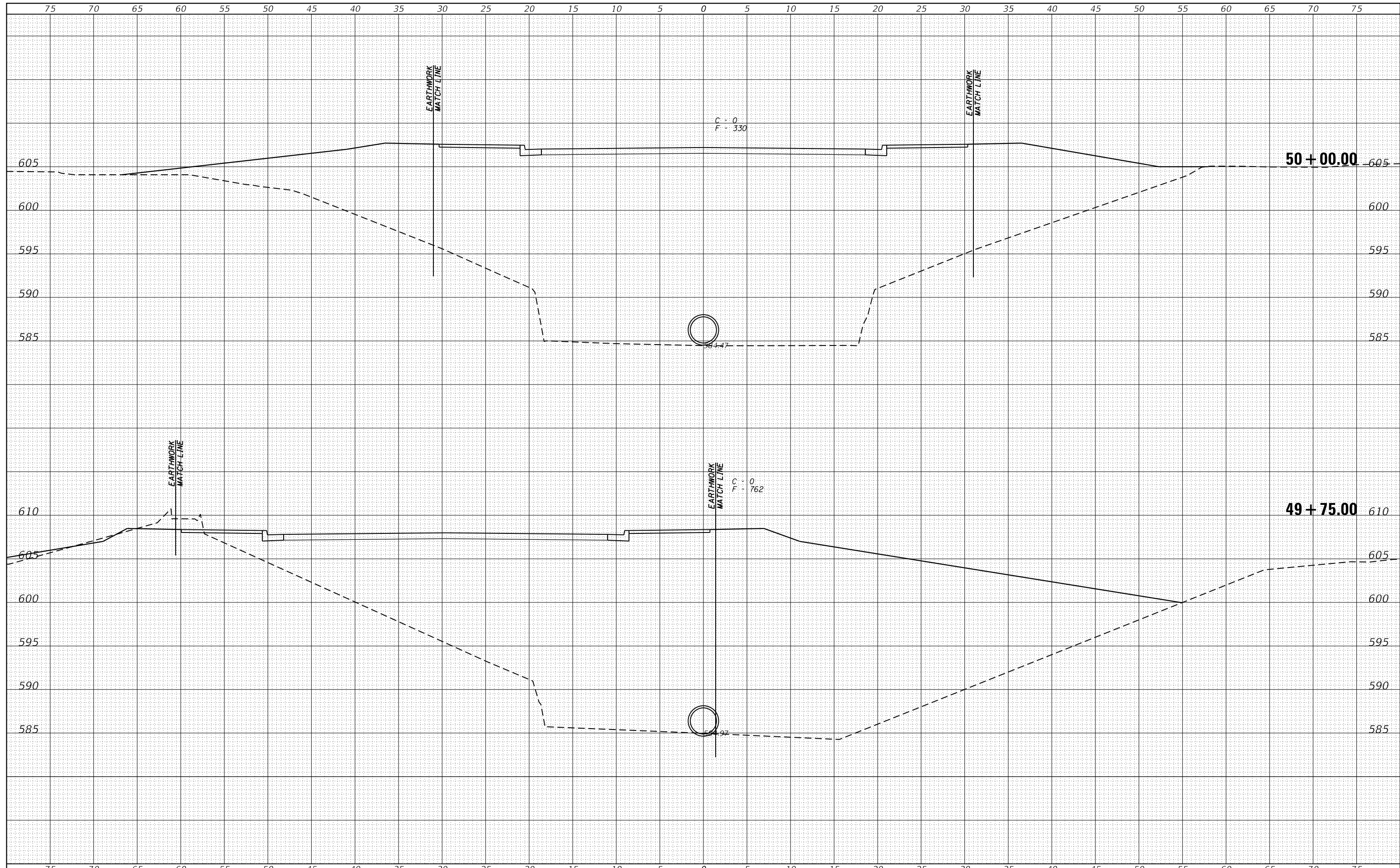
DATE	
BY	
ORIGINAL SURVEY	SURVEYED
NOTE BOOK	PLOTTED
NO.	TEMPLATE
	AREAS
	CHECKED



FILE NAME =	USER NAME = ckohlrus	DESIGNED -	REVISIED -		Veenstra & Kimm, Inc. Springfield, IL. Phone: (217)544-8033 IL. Design Firm No. 184-001939			CROSS SECTIONS (ABANDONED RAILROAD)		F.A.S. RTÉ.	SECTION	COUNTY	TOTAL SHEETS	SHEET NO.
Z:\0 V and K Jobs\5307 Menard County West Douglas Avenue Bridge\CADD Sheets\5307-sht-xsc-01.dwg	DRAWN	REVISIED -	REVISIED -					576	18-00069-00-BR	MENARD	34	27		
PLOT SCALE = 10.0000' / in.	CHECKED -	REVISIED -	REVISIED -					CONTRACT NO. 93756						
PLOT DATE = 9/25/2020	DATE -	REVISIED -	REVISIED -					FED. ROAD DIST. NO. ILLINOIS FED. AID PROJECT						
SCALE: 1"=5'				SHEET NO. OF SHEETS		STA. 48+75.00 TO STA. 49+00.00								

DATE	
BY	
SURVEYED	
PLOTTED	
TEMPLATE	
AREAS	
CHECKED	
FINAL SURVEY	
NOTE BOOK	
NO.	

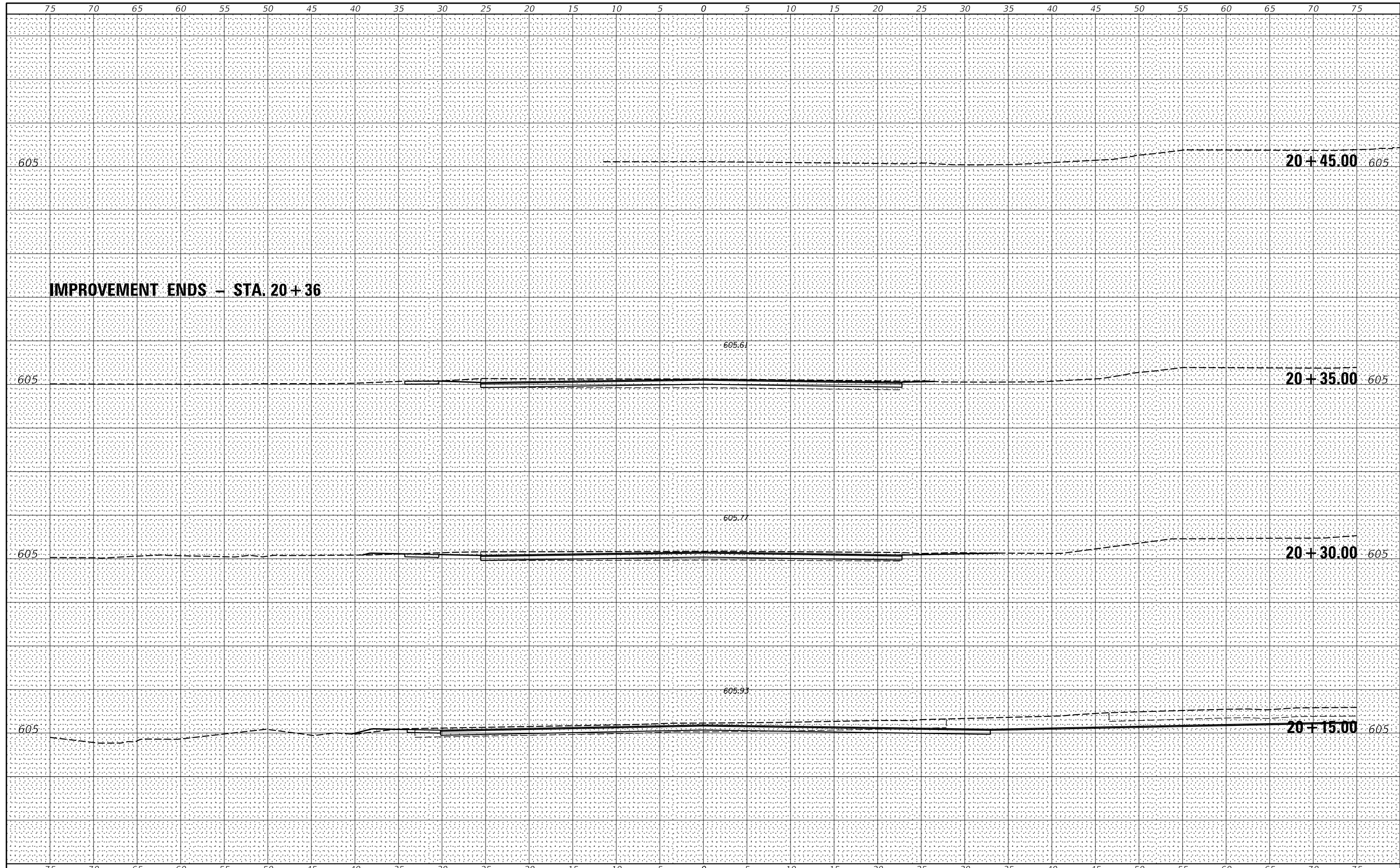
DATE	
BY	
SURVEYED	
PLOTTED	
TEMPLATE	
AREAS	
CHECKED	
ORIGINAL SURVEY	
NOTE BOOK	
NO.	



FILE NAME =	USER NAME = ckohlrus	DESIGNED -	REVISIED -	Venstra & Kimm, Inc. Springfield, IL. Phone: (217)544-8033 IL. Design Firm No. 184-001939	CROSS SECTIONS (ABANDONED RAILROAD)		F.A.S. RTE.	SECTION	COUNTY	TOTAL SHEETS	SHEET NO.	
Z:\0 V and K Jobs\5307 Menard County West Douglas Avenue Bridge\CADD Sheets\5307-sht-xsc	DRAWN -	REVISIED -	576				18-00069-00-BR	MENARD	34	29		
PLOT SCALE = 10.0000' / in.	CHECKED -	REVISIED -	SCALE: 1"=5'		SHEET NO.	OF SHEETS	STA. 49+75.00	TO STA. 50+00.00	CONTRACT NO. 93756			
PLOT DATE = 9/25/2020	DATE -	REVISIED -	FED. ROAD DIST. NO. ILLINOIS FED. AID PROJECT									

DATE	
BY	
ORIGINAL SURVEY	
SURVEYED	
NOTE BOOK	
PLOTTED	
TEMPLATE	
AREAS	
CHECKED	
NO.	

DATE	
BY	
ORIGINAL SURVEY	
SURVEYED	
NOTE BOOK	
PLOTTED	
TEMPLATE	
AREAS	
CHECKED	
NO.	



FILE NAME =	USER NAME = *USER*	DESIGNED -	REVISED -	 Veenstra & Kimm, Inc. Springfield, IL. Phone: (217)544-8033 IL. Design Firm No. 184-001939	CROSS SECTIONS (BLUE JAY ROAD)		F.A.S. RTE.	SECTION	COUNTY	TOTAL SHEETS	SHEET NO.
FILEL		DRAWN -	REVISED -		SCALE: _____	SHEET NO. ___ OF ___ SHEETS	576	18-00069-00-BR	MENARD	34	33
		CHECKED -	REVISED -		STA. 20+15.00	TO STA. 20+49.71	CONTRACT NO. 93756				
		DATE -	REVISED -		FED. ROAD DIST. NO. _ [ILLINOIS] FED. AID PROJECT						

