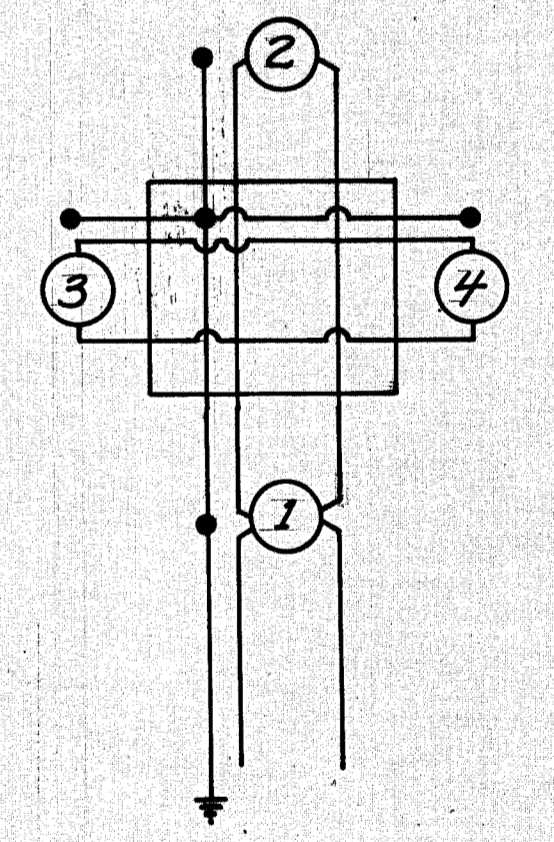
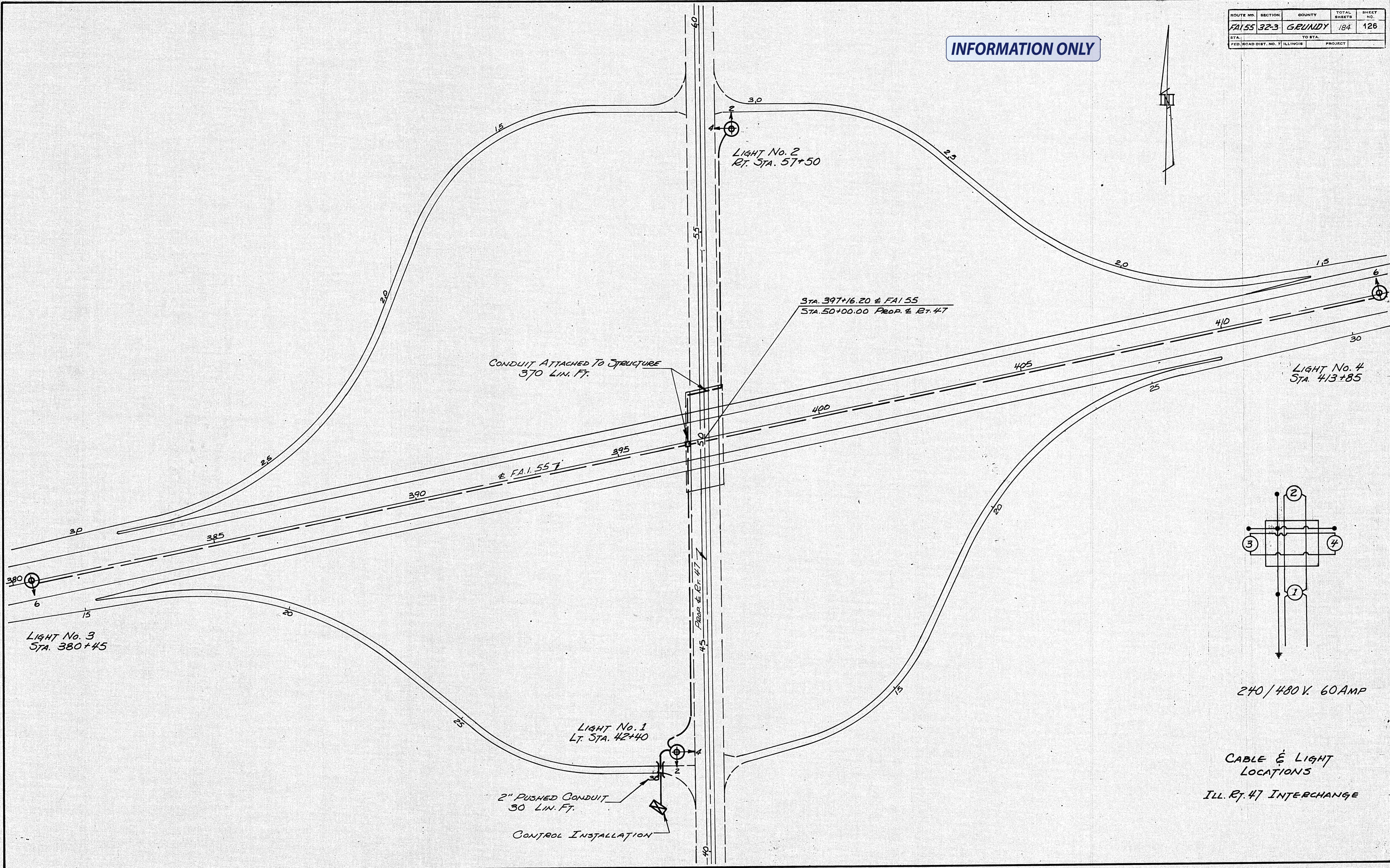
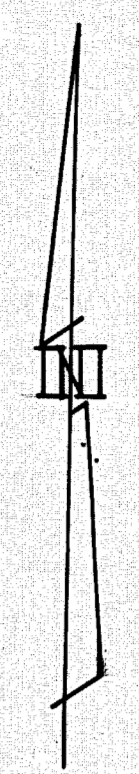


ROUTE NO.	SECTION	COUNTY	TOTAL SHEETS	SHEET NO.
FA155	32-3	GRANDY	184	126
STA.	TO STA.		PROJECT	
FED. ROAD DIST. NO. 7	ILLINOIS			

INFORMATION ONLY



240/480 V. 60 AMP

CABLE & LIGHT LOCATIONS  
ILL. RT. 47 INTERCHANGE

**INFORMATION ONLY**

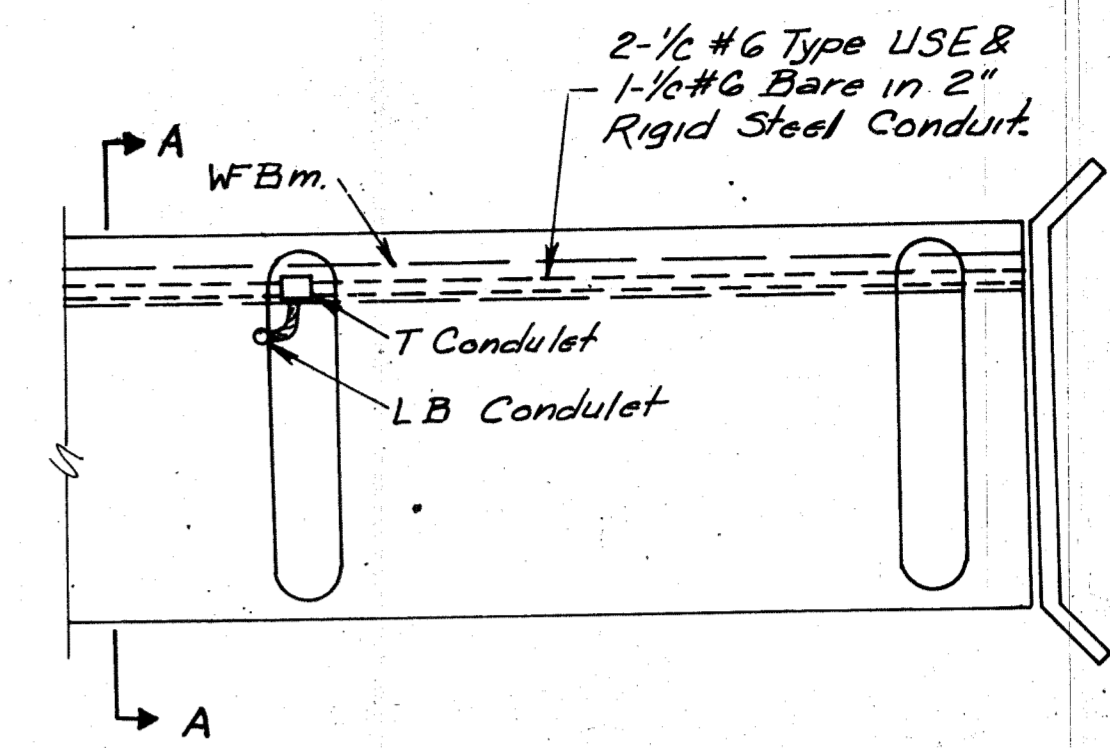
FOUNDATION DEPTHS		
Light No.	Station	Depth*
1	Lt 42+40	18 Ft.
2	Rt 57+50	18 Ft.
3	C 380+45	18 Ft.
4	C 413+85	18 Ft.
Total		72 Ft.

\* Subject to verification by State-Provided Boring Data.

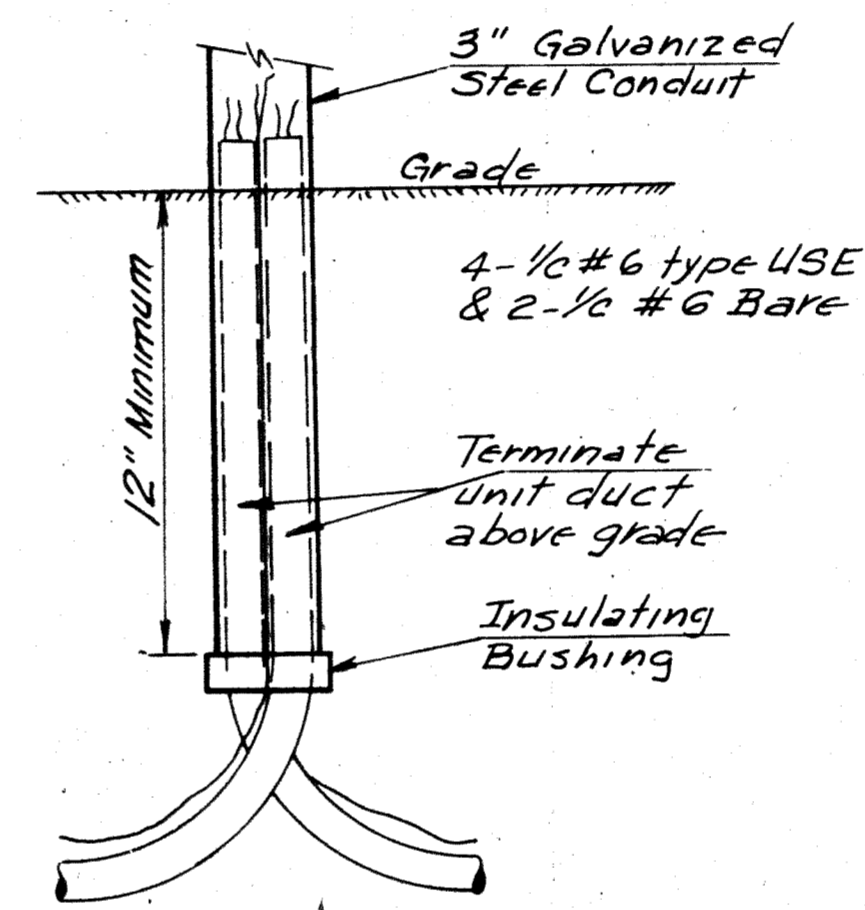
**DESIGN TABLE**

Dominant Soil Characteristics	Type of Soil	Design Depth "D"	Reinforcement in Foundation	
			Vertical Bars	Spiral
Qu = 0.375 t/sq. ft.	Soft Clay	34'-0"	27'-0"	S = 24'-0"
Qu = 0.75 t/sq. ft.	Medium Clay	24'-0"	17'-0"	S = 14'-0"
Qu = 1.50 t/sq. ft.	Stiff Clay	18'-0"	11'-0"	S = 8'-0"
Int. Friction $\phi = 34^\circ$	Loose Sand	18'-0"	11'-0"	S = 8'-0"
Int. Friction $\phi = 37.5^\circ$	Medium Sand	16'-0"	9'-0"	S = 6'-0"
Int. Friction $\phi = 40^\circ$	Dense Sand	14'-0"	7'-0"	S = 4'-6"

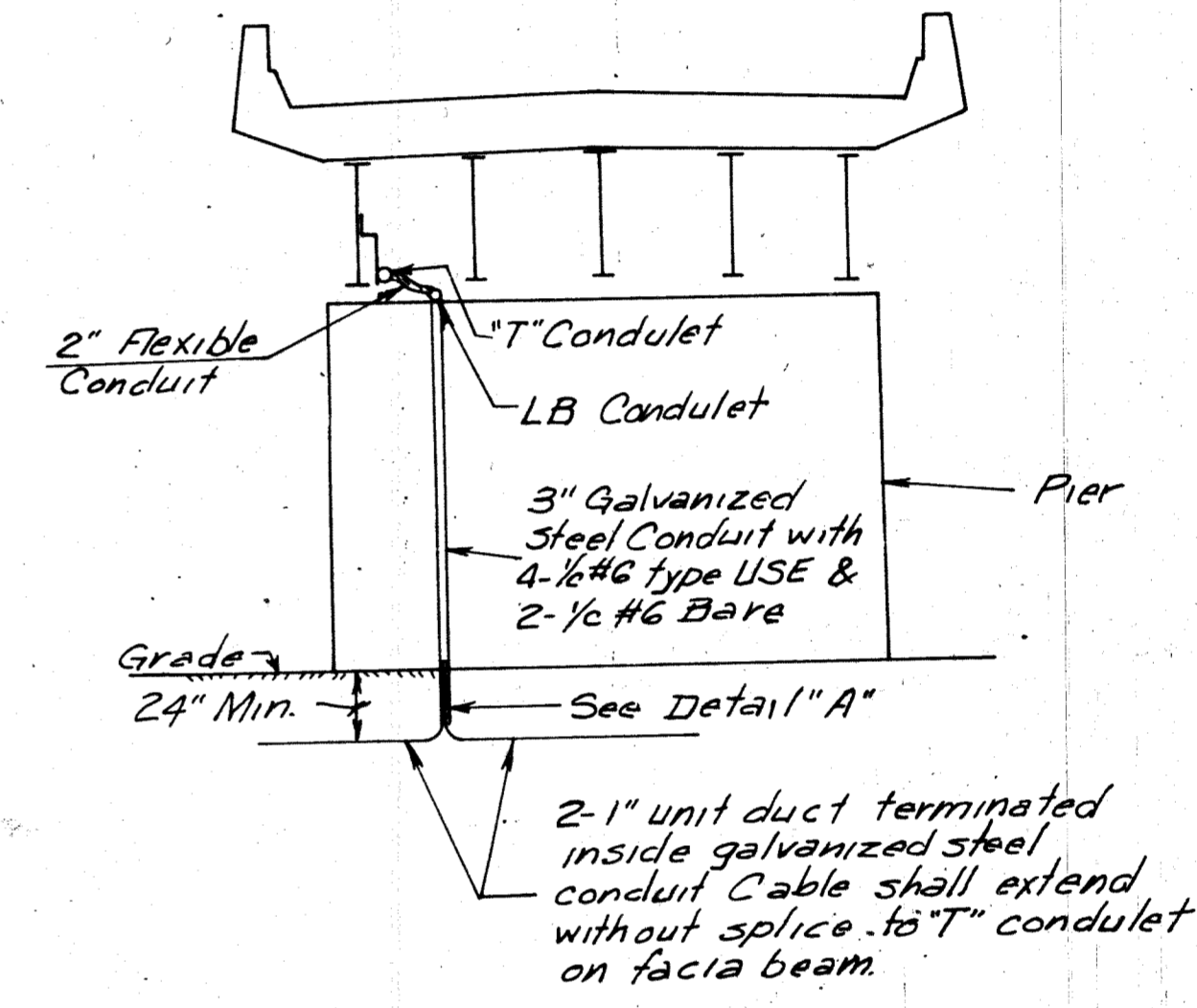
DESIGN DATA: 80 MPH Wind with 1.30 Gust Factor.



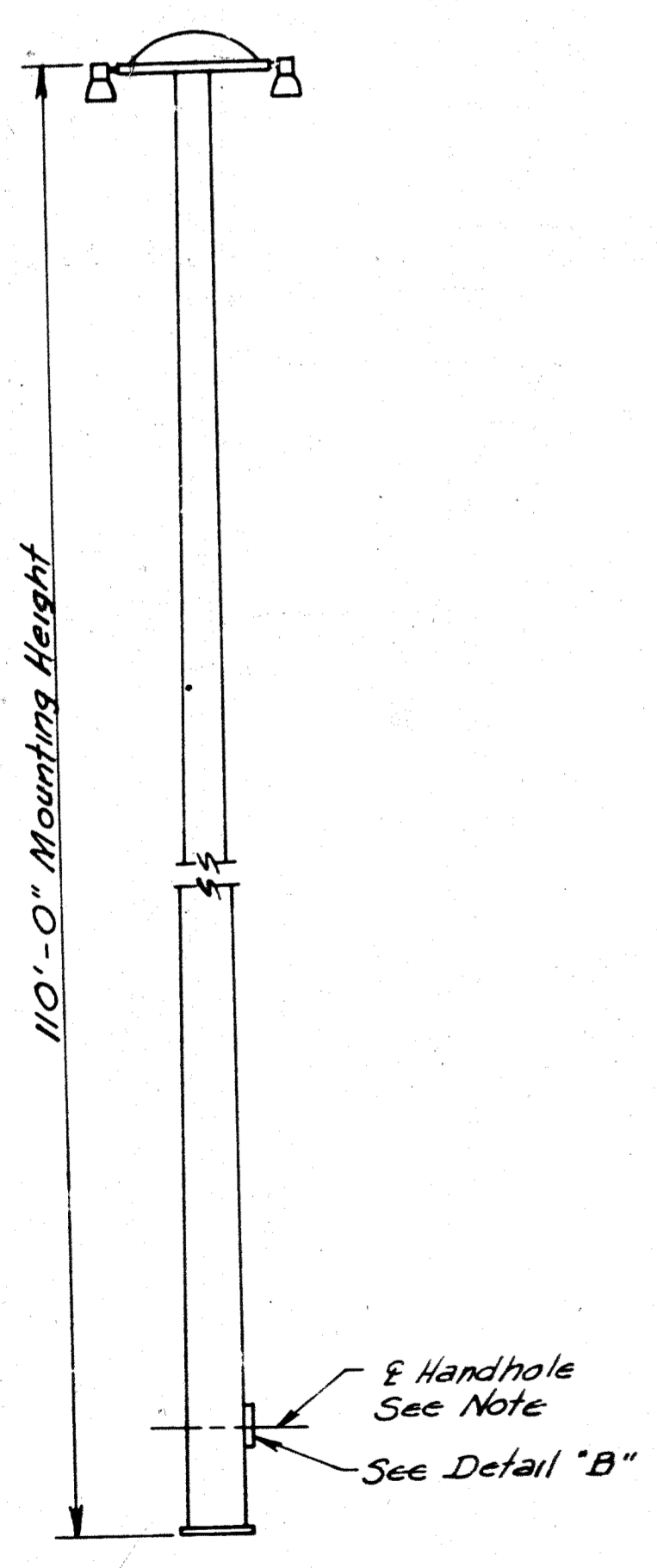
BRIDGE CROSSING DETAILS



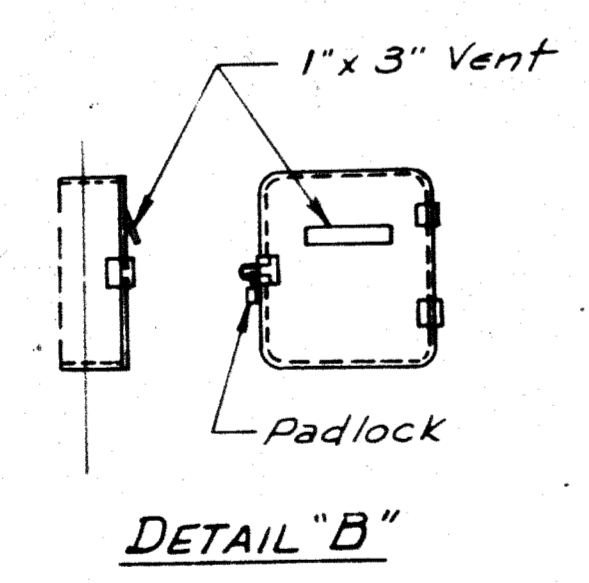
DETAIL "A"



SECTION A-A

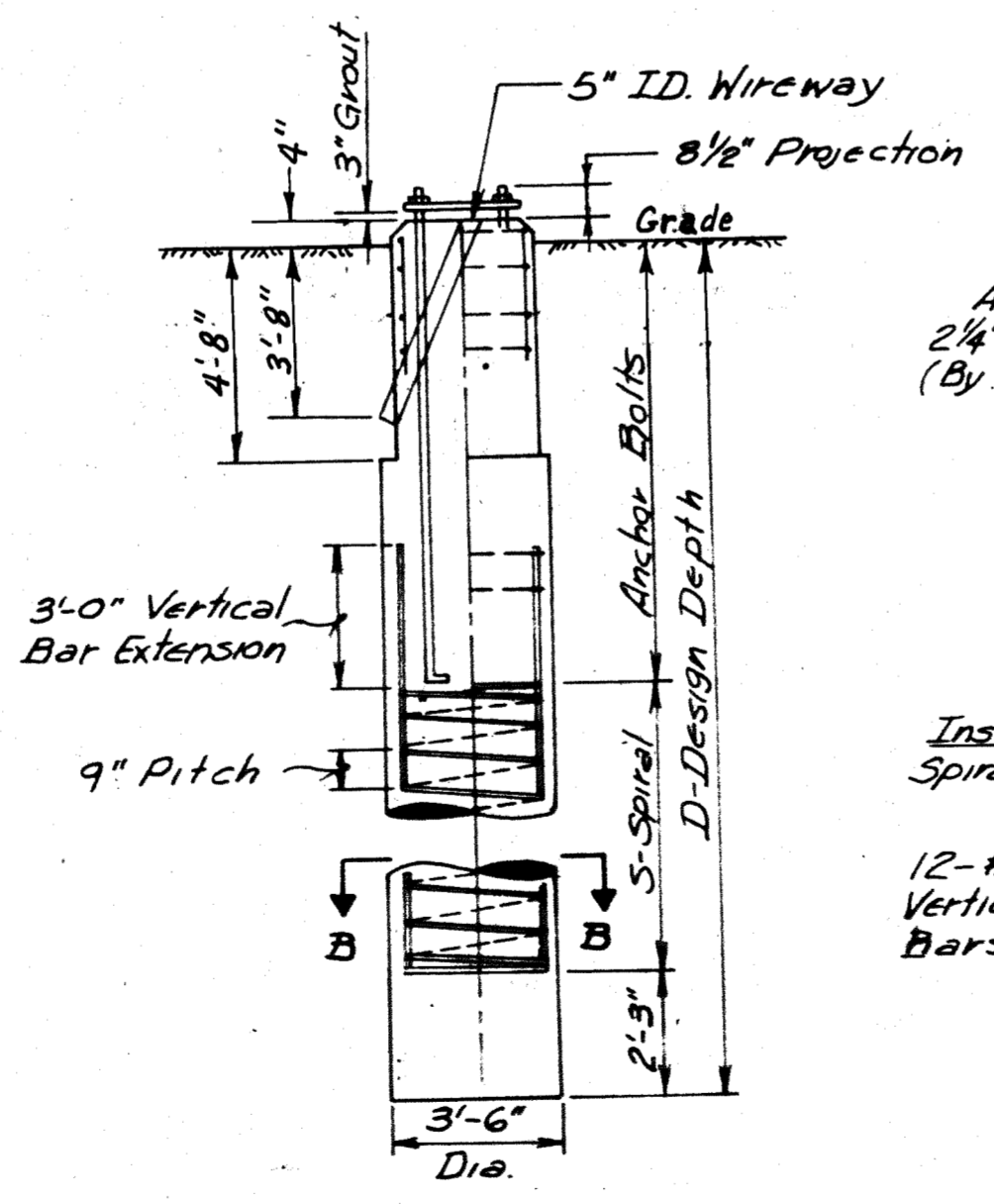


POLE ELEVATION

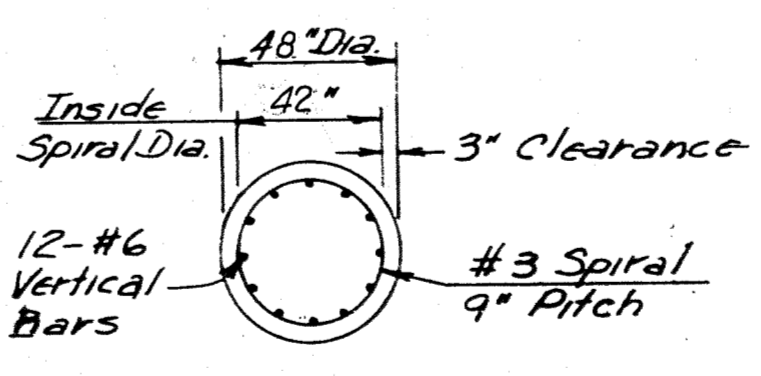
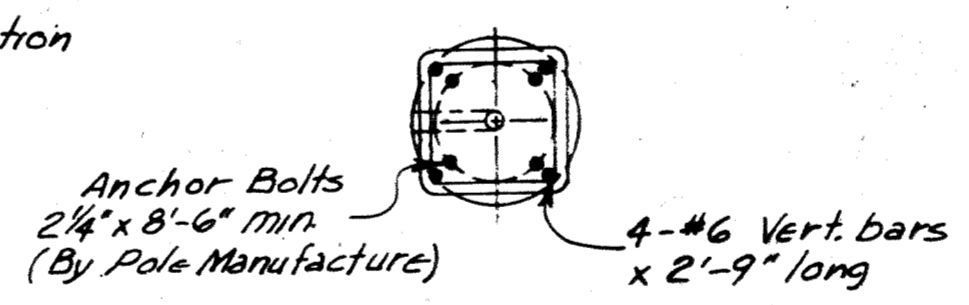


DETAIL "B"

Pole Handhole Location: Opposite of 5" Wireway entrance into foundation below ground.



POLE FOUNDATION



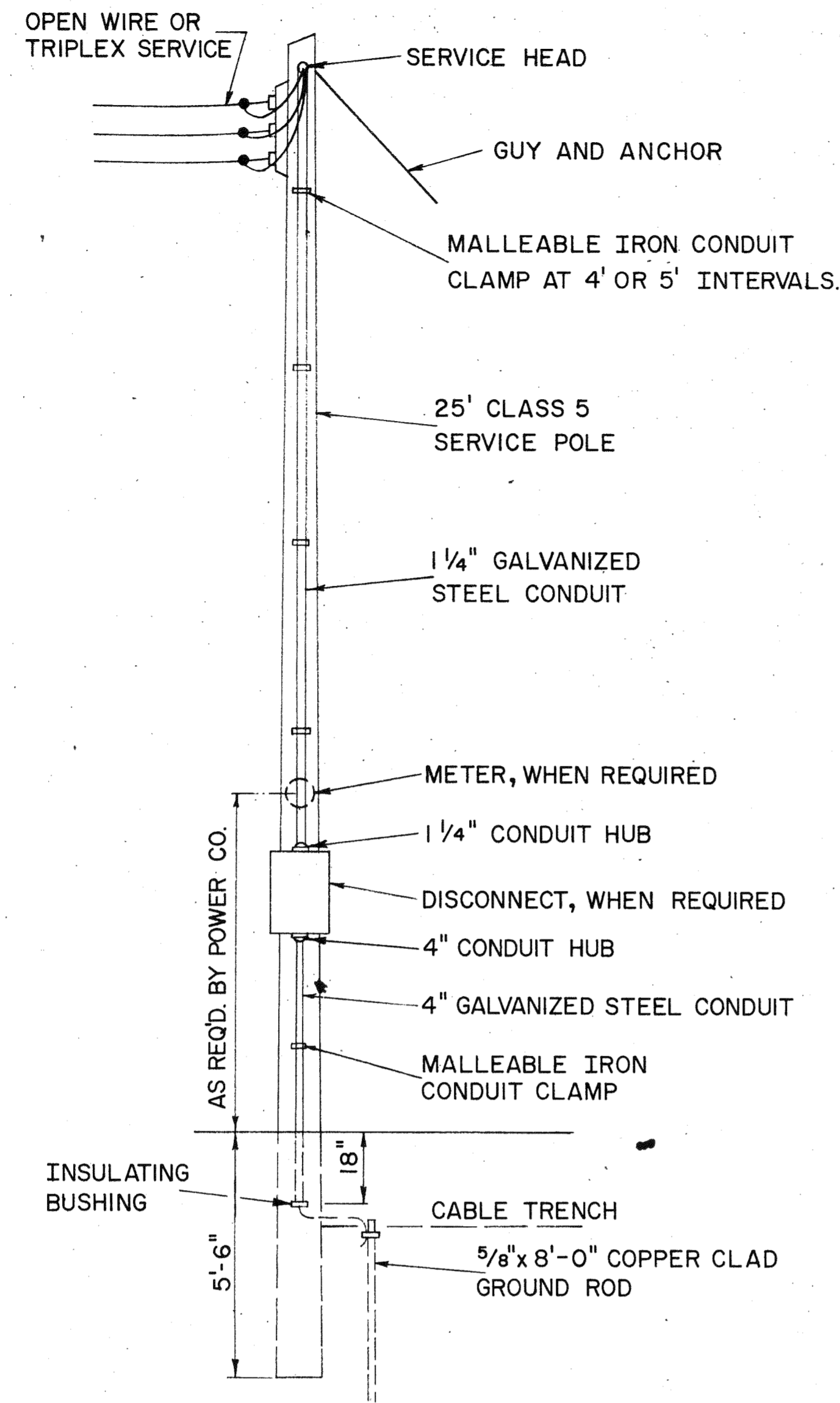
SECTION B-B

**HIGH MAST LIGHTING DETAILS**

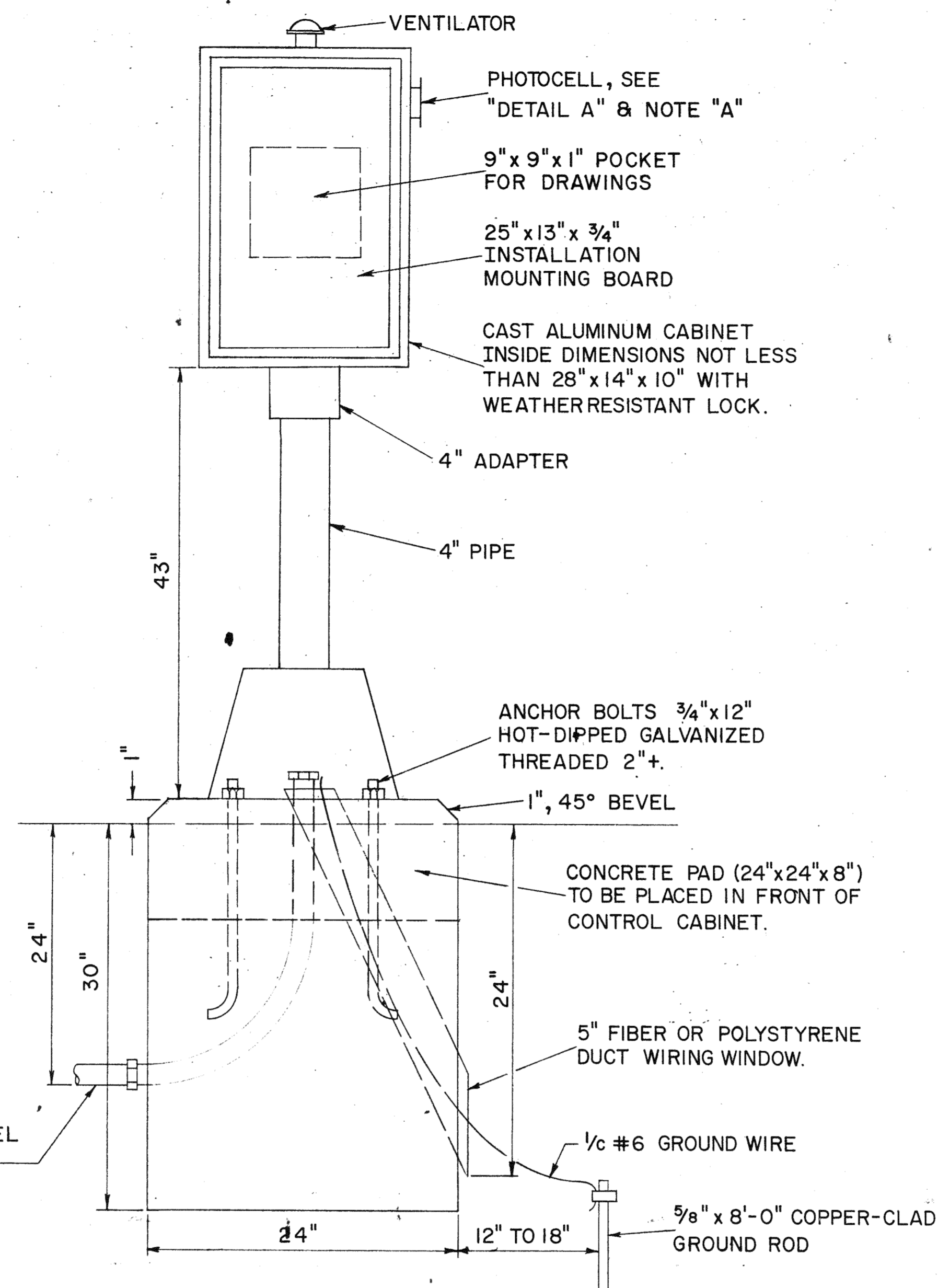
ILL. RT. 47

ROUTE	SECTION	COUNTY	TOT. SHTS.	SHEET #	SHEET #
FA1.55	53-1	Livingston	184	123	
					SHEETS

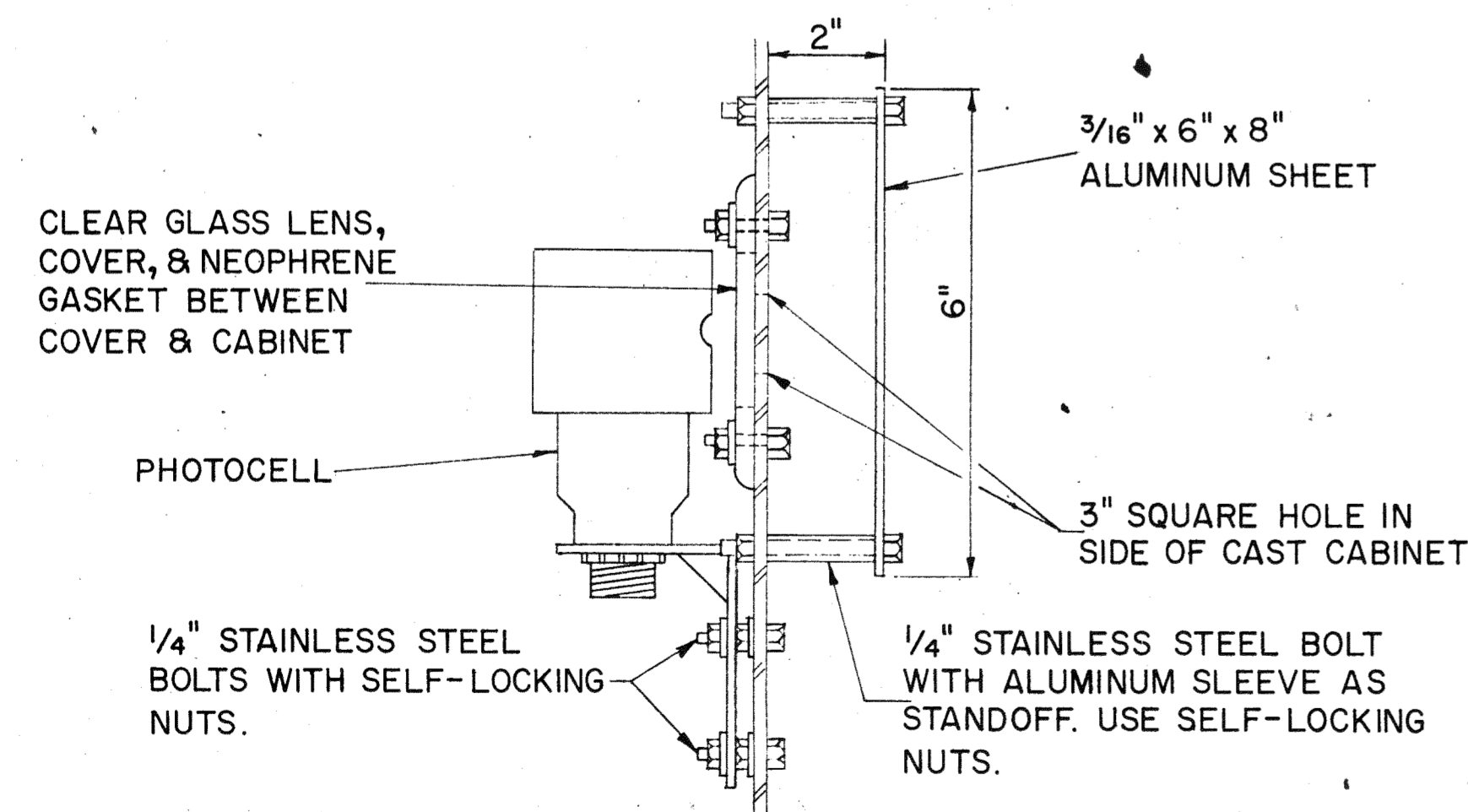
**INFORMATION ONLY**



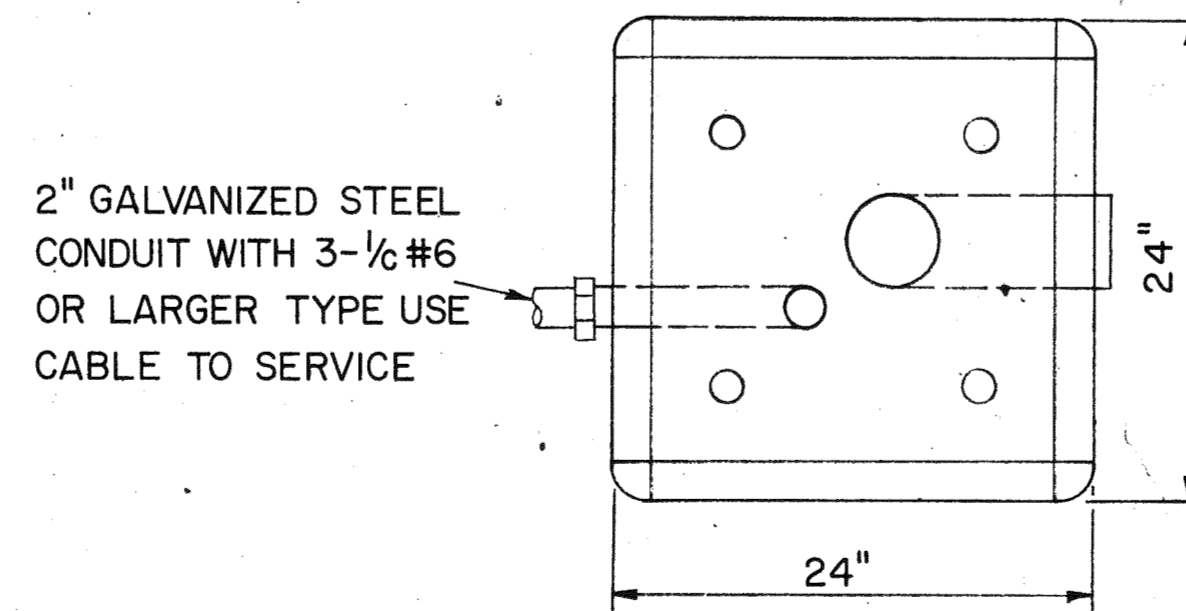
**SERVICE POLE (WHEN REQD.)**  
LOCATE ADJACENT TO R.Q.W. LINE



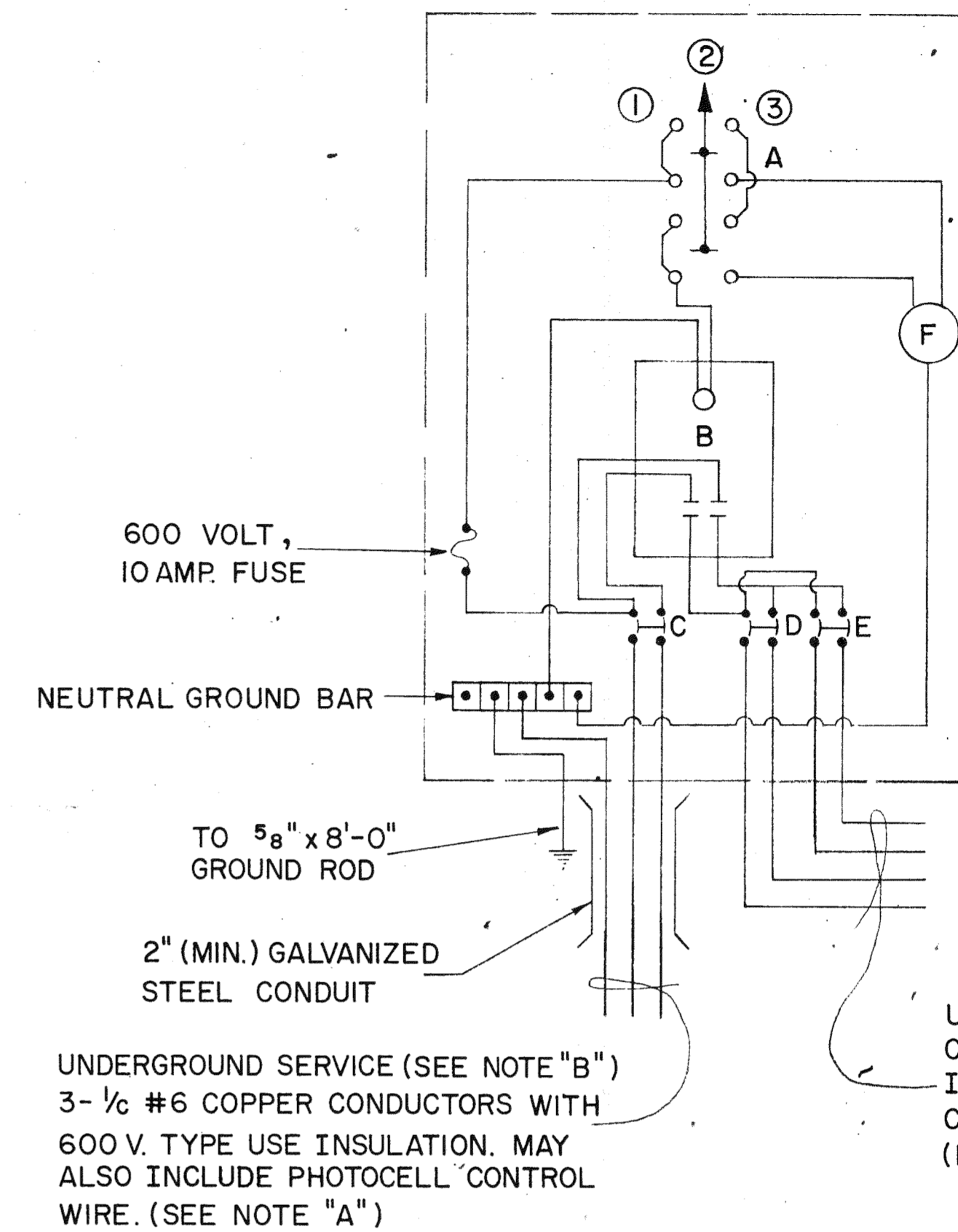
**CONTROL INSTALLATION**



**DETAIL "A"**

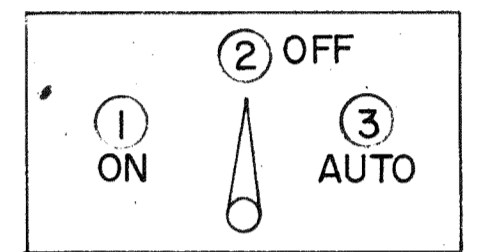


**TOP OF FOUNDATION**



- A- SELECTOR SWITCH
- B- 2 POLE 60 AMP CONTACTOR
- C- 2 POLE 70 AMP BREAKER
- D,E- 2 POLE 50 AMP BREAKERS
- F- PHOTOCELL

A. SELECTOR SWITCH, THREE POSITION, DOUBLE POLE. MARK POSITIONS WITH METAL OR ENGRAVED PLASTIC NAME PLATE AS SHOWN.



F. PHOTOCELL SEE DETAIL "A" & NOTE "A"

LIGHTING CIRCUITS UNIT DUCT CONTAINING 2- 1/2 #6 COPPER CONDUCTORS WITH 600V. INSULATION & 1- 1/2 #6 BARE COPPER CONTINUOUS GROUND. (EXCEPT WHEN NOTED)

NOTE:  
WIRING SHALL BE PANEL BOARD FASHION. ALL BENDS SHALL BE RIGHT ANGLES. ALL RUNS SHALL BE VERTICAL OR PARALLEL TO PANEL BOARD. WIRES SHALL BE GROUPED OR LACED.

**WIRING DIAGRAM**

**NOTE "A"**

WHERE UNMETERED SERVICE IS PROVIDED BY THE POWER COMPANY, THE PHOTOCELL, RECEPT, & WINDOW COVER MAY BE OMITTED. THE CONTACTOR SHALL FURNISH AND INSTALL 2- 1/2 #12 AND AERIAL WIRE IF REQUIRED FROM THE CONTROL INSTALLATION TO THE POWER COMPANY'S PHOTOCELL CONTROL AND CONNECT PER WIRING DIAGRAM.

**NOTE "B"**

THE UNDERGROUND SERVICE SHALL BE 30 FT. MINIMUM AND 150 FT. MAXIMUM. TOTAL AERIAL & UNDERGROUND SERVICE BETWEEN THE CONTROL INSTALLATION AND PRIMARY TRANSFORMER SHALL BE 250 FT.

DRAWN BY J.L.P.  
FEBRUARY 16, 1979

**CONTROL INSTALLATION**

TYPE CB-RCS-60-480