

STATE OF ILLINOIS
DEPARTMENT OF TRANSPORTATION

F. A. P. RTE	SECTION	COUNTY	TOTAL SHEETS	SHEET NO.
358	2020-136-RS&RW	COOK	23	1
		ILLINOIS	CONTRACT NO. 62M14	

FOR INDEX OF SHEETS, SEE SHEET NO. 2

THE PROJECT IS LOCATED IN THE VILLAGE OF BURNHAM AND THE CITY OF CALUMET CITY

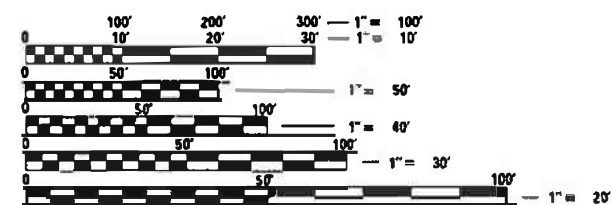
TRAFFIC DATA:

IL 83:
PROJECT BEGIN TO PROJECT END:
ADT (2018) = 17500
SPEED LIMIT = 40 MPH

**PROPOSED
HIGHWAY PLANS**

FAP ROUTE 358: TORRENCE AVE
GRAND CALUMET RIVER TO HARDING AVE
SECTION: 2020-136-RS&SW
PROJECT: NHPP-SUZV(962)
SMART OVERLAY, ADA IMPROVEMENTS
COOK COUNTY
C-91-334-20

D-91-536-20

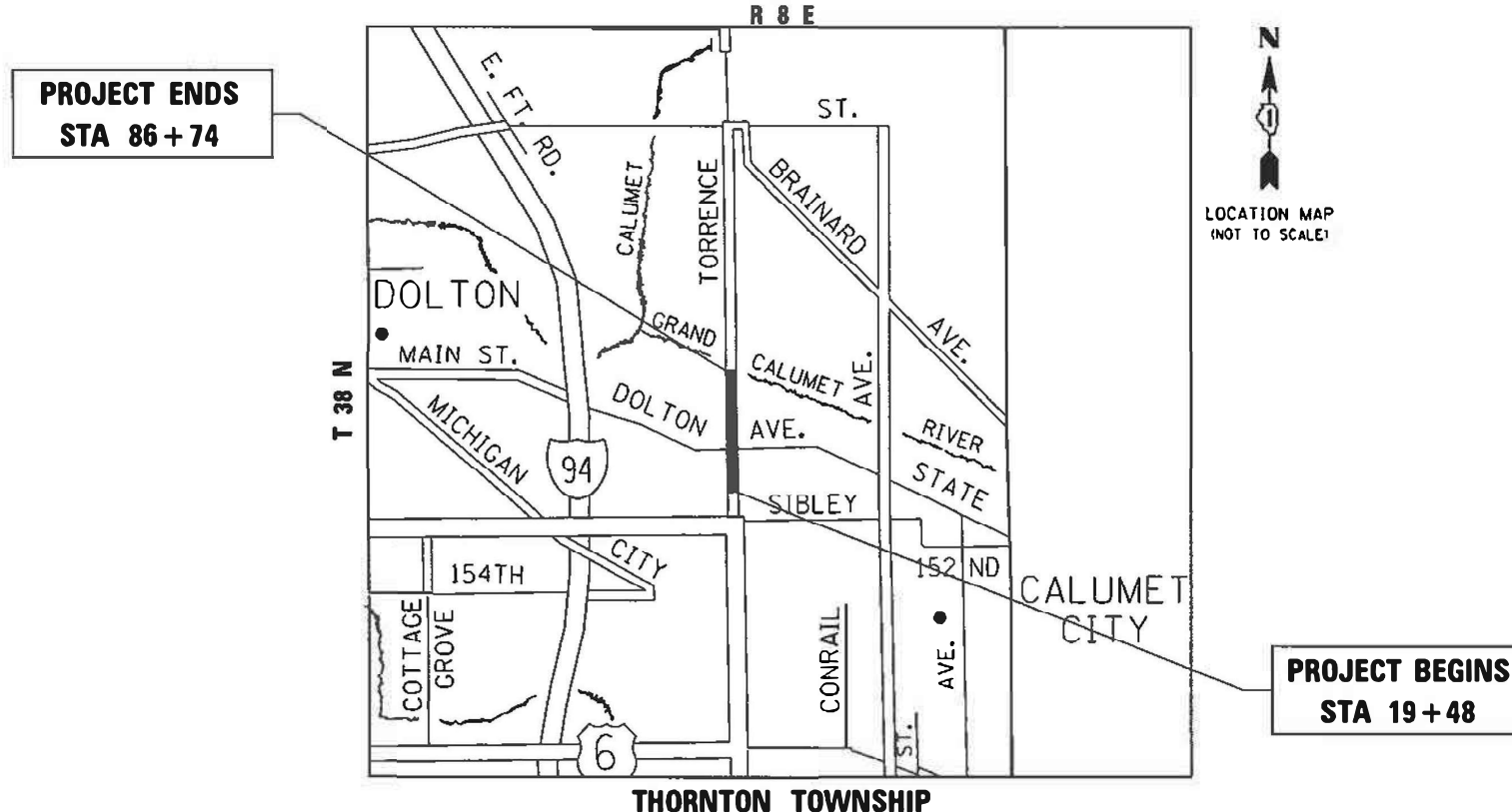


FULL SIZE PLANS HAVE BEEN PREPARED USING STANDARD ENGINEERING SCALES. REDUCED SIZED PLANS WILL NOT CONFORM TO STANDARD SCALES. IN MAKING MEASUREMENTS ON REDUCED PLANS, THE ABOVE SCALES MAY BE USED.

J.U.L.I.E.
JOINT UTILITY LOCATION INFORMATION FOR EXCAVATION
1-800-892-0123
OR 811

PROJECT ENGINEER: VESELIN VELICHKOV (847) 705-4432
PROJECT MANAGER: FAWAD AQUEEL (847) 705-4247

CONTRACT NO. 62M14



GROSS LENGTH = 6,726 FT. = 1.3 MILES
OMMISSION = 1007 FT
NET LENGTH = 5719 FT. = 1.08 MILES

STATE OF ILLINDIS
DEPARTMENT OF TRANSPORTATION

SUBMITTED January 24, 2021
Joseph P. ...
REGIONAL ENGINEER

January 29, 2021
Scott E. A. ...
ENGINEER OF DESIGN AND ENVIRONMENT

January 29, 2021
James J. ...
DIRECTOR OF HIGHWAYS PROJECT IMPLEMENTATION

PRINTED BY THE AUTHORITY
OF THE STATE OF ILLINOIS

INDEX OF SHEETS

STATE STANDARDS

GENERAL NOTES

SHEET NO.	DESCRIPTION	STANDARD NO.	DESCRIPTION
1	COVER SHEET	000001-08	STANDARD SYMBOLS, ABBREVIATIONS AND PATTERNS
2	INDEX OF SHEETS, STATE STANDARDS & GENERAL NOTES	424001-11	PERPENDICULAR CURB RAMPS FOR SIDEWALKS
3-5	SUMMARY OF QUANTITIES	424006-05	DIAGONAL CURB RAMPS FOR SIDEWALKS
6	TYPICAL SECTIONS	424011-04	CORNER PARALLEL CURB RAMPS FOR SIDEWALKS
7-9	ROADWAY PLANS	424021-06	DEPRESSED CORNER FOR SIDEWALK
10	ADA DETAILS	442201-03	CLASS C AND D PATCHES
11-12	DETECTOR LOOPS	604001-05	FRAME AND LIDS TYPE I
13	DETAILS FOR FRAMES AND LIDS ADJUSTMENT WITH MILLING (BD-08)	606001-07	CONCRETE CURB TYPE B AND COMBINATION CONCRETE CURB AND GUTTER
14	PAVEMENT PATCHING FOR HMA SURFACED PAVEMENT (BD-22)	701006-05	OFF-RD OPERATIONS, 2L, 2W, 15' (4.5 m) TO 24" (600 mm) FROM PAVEMENT EDGE
15	CURB OR CURB AND GUTTER REMOVAL AND REPLACEMENT (BD-24)	701011-04	OFF-Rd MOVING OPERATION, 2L, 2W , DAY ONLY
16	BUTT JOINT AND HMA TAPER DETAILS (BD-32)	701101-05	OFF-RD OPERATIONS, MULTILANE, 15' (4.5 m) TO 24" (600 mm) FROM PAVEMENT EDGE
17	TRAFFIC CONTROL AND PROTECTION FOR SIDE ROADS, INTERSECTIONS, AND DRIVEWAYS (TC-10)	701301-04	LANE CLOSURE, 2L, 2W, SHORT TIME OPERATIONS
18	TYPICAL APPLICATIONS RAISED REFLECTIVE PAVEMENT MARKERS (SNOW-PLOW RESISTANT) (TC-11)	701311-03	URBAN LANE CLOSURE, 2L, 2W, MOVING OPERATION DAY ONLY
19	DISTRICT ONE TYPICAL PAVEMENT MARKINGS (TC-13)	701427-05	LANE CLOSURE, MULTILANE,INTERMITTENT OR MOVING OPER.,FOR SPEEDS = 40 MPH
20	TRAFFIC CONTROL AND PROTECTION AT TURN BAYS (TO REMAIN OPEN TO TRAFFIC) (TC-14)	701501-06	URBAN LANE CLOSURE, MULTILANE, 22L, 2W, UNDIVIDED
21	SHORT TERM PAVEMENT MARKINGS LETTERS AND SYMBOLS (TC-16)	701601-09	URBAN LANE CLOSURE, MULTILANE, 1W OR 2W WITH NONTRAVERSABLE MEDIAN
22	ARTERIAL ROAD INFORMATION SIGN (TC-22)	701602-10	URBAN LANE CLOSURE, MULTILANE, 2W WITH BIDIRECTIONAL LEFT TURN
23	DISTRICT 1 - DETECTOR LOOP INSTALLATION DETAILS FOR ROADWAY RESURFACING (TS-05)	701606-10	URBAN SINGLE LANE CLOSURE, MULTILANE, 2W WITH MOUNTABLE MEDIAN
		701701-10	URBAN LANE CLOSURE, MULTILANE INTERSECTION
		701801-06	SIDEWALK, CORNER OR CROSSWALK CLOSURE
		701901-08	TRAFFIC CONTROL DEVICES
		886001-01	DETECTOR LOOP INSTALLATIONS

- BEFORE STARTING ANY EXCAVATION, THE CONTRACTOR SHALL CALL "JULIE" AT (800) 892-0123 OR 811 FOR FIELD LOCATIONS OF BURIED ELECTRIC, TELEPHONE, AND GAS FACILITIES. (48 HOUR NOTIFICATION REQUIRED)
- THE CONTRACTOR SHALL COORDINATE CONSTRUCTION ACTIVITIES WITH UTILITY COMPANIES,VILLAGE OF BURNHAM AND CITY OF CALUMET CITY.
- THE CONTRACTOR WILL NOT BE ALLOWED TO BE SET UP A YARD OR FIELD OFFICE ON STATE PROPERTY WITHOUT WRITTEN PERMISSIONS FROM THE DEPARTMENT.
- THE CONTRACTOR SHALL CONTACT DISTRICT ONE ARTERIAL TRAFFIC CONTROL SUPERVISOR AT KALPANA.KANNAN-HOSADURGA@ILLINOIS.GOV. A MINIMUM OF 72 HOURS IN ADVANCE OF BEGINNING WORK.
- IT SHALL BE THE CONTRACTOR'S RESPONSIBILITY TO VERIFY ALL DIMENSIONS AND CONDITIONS EXISTING IN THE FIELD PRIOR TO ORDERING MATERIALS AND BEGINNING CONSTRUCTION.
- BEFORE THE BEGINNING ANY WORK, THE CONTRACTOR SHALL RETAIN AND RECORD FOR FUTURE REFERENCE. ALL EXISTING PAVEMENT MARKING LINES (AND RAISED REFLECTIVE MARKERS) IN ORDER THAT THESE LOCATIONS CAN BE RE-ESTABLISHED FOR STRIPING. EXACT LOCATIONS OF ALL PAVEMENT MARKINGS SHALL BE AS DIRECTED.
- TEN (10) FOOT TRANSITIONS SHALL BE USED TO MATCH PROPOSED CURB AND GUTTERS AND MEDIAN ITEMS OF WORK TO EXISTING CURBS AND GUTTER AND MEDIANS IN THE FIELD, UNLESS OTHERWISE SHOWN. THE TRANSITIONS SHALL BE PAID FOR THE CONTRACT UNIT PRICE FOR THE PROPOSED ITEMS OF WORK SPECIFIED.
- THE CONTRACTOR SHALL BE REQUIRED TO PROVIDE ACCESS TO ABUTING PROPERTY AT ALL TIMES DURING THE CONSTRUCTION OF THIS PROJECT.
- ALL PAVEMENT PATCHING, CURB AND GUTTER REMOVAL AND REPLACEMENT, DRAINAGE ADJUSTMENT LOCATIONS WILL BE DETERMINED IN THE FIELD BY THE RESIDENT ENGINEER.
- WHEN MILLED PAVEMENT IS OPEN TO TRAFFIC, THE MAXIMUM GRADE DIFFERENTIAL BETWEEN PASSES OF MILILING MACHING SHALL NOT EXCEED 1 1/2 INCHES (40 MM) WHERE THE SPEED LIMIT IS GREATER THAN 45 MPH (80 KM/H). WITH WRITTEN APPROVAL FROM THE ENGINEER. A MAXIMUM GRADE DIFFERENTIAL OF 3 INCHES (75 MM) MAY BE ALLOWED IF THE EDGE OF THE MILILING IS SLOPED A MIN. 1:3 (V:H).
- BUTT JOINTS WILL BE INSTALLED AT THE ENDS OF ALL RESURFACING (WHERE RESURFACING MEETS EXISTING PAVEMENT), IN ACCORDANCE WITH THE "BUTT JOINT AND HMA TAPER DETAILS" SHEET INCLUDED IN THE PLANS, UNLESS OTHERWISE SPECIFIED.
- PAVEMENT MARKING TAPE, TYPE III BE USED FOR SHORT TERM PAVEMENT MARKINGS ON ALL FINAL SURFACES. THE COST OF THE PAVEMENT MARKING TAPE, TYPE III SHALL BE INCLUDED IN THE COST OF SHORT TERM PAVEMENT MARKING.
- DOUBLE LANE MARKERS ARE TO BE USED AS SHOWN ON THE DISTRICT ONE DETAIL "TYPICAL APPLICATIONS - RAISED REFLECTIVE PAVEMENT MARKERS (SNOW-PLOW RESTRANT)" SHOWN IN THE PLANS.
- ANY PAVEMENT MARKINGS AND RAISED REFLECTIVE PAVEMENT MARKERS OBLITERATED BY MILLING AND RESURFACING OPERATIONS ON SIDE STREETS AND ENTRANCES SHALL BE REPLACED AND PAID FOR IN KIND.
- THE RESIDENT ENGINEER SHALL CONTACT MS. PATRICE HARRIS. AREA TRAFFIC FIELD TECHNICIAN VIA EMAIL AT PATRICE.HARRIS@ILLINOIS.GOV A MINIMUM OF 2 WEEKS PRIOR TO PLACEMENT OF PERMANENT PAVEMENT MARKING.
- DO NOT SCALE PLANS FOR CONSTRUCTION DIMENSIONS.

MODEL: Default
 FILE NAME: p:\hamroom.dwt
 PROJECT: I:\Projects\153620\CADDData\Design\153620-sh-generac.dgn

USER NAME = hamwim	DESIGNED -	REVISED -
	DRAWN -	REVISED -
PLOT SCALE = 100,0000 ' / in.	CHECKED -	REVISED -
PLOT DATE = 1/29/2021	DATE -	REVISED -

**STATE OF ILLINOIS
DEPARTMENT OF TRANSPORTATION**

INDEX OF SHEETS, STATE STANDARDS & GENERAL NOTES TORRENCE AVE (HARDING AVE. - GRAND CALUMET RIVER.)			
SCALE:	SHEET	OF	SHEETS
	STA.	TO	STA.

F.A.P. RTE.	SECTION	COUNTY	TOTAL SHEETS	SHEET NO.
358	2020-136-R5&SW	COOK	23	2
			CONTRACT NO. 62M14	
ILLINOIS		FED. AID PROJECT		

SUMMARY OF QUANTITIES			TOTAL QUANTITIES URBAN	CONSTRUCTION TYPE CODE					SUMMARY OF QUANTITIES			TOTAL QUANTITIES URBAN	CONSTRUCTION TYPE CODE				
CODE NO	ITEM	UNIT		80% FED 20% STATE 0005	100% STATE 0005					CODE NO	ITEM		UNIT	80% FED 20% STATE 0005	100% STATE 0005		
20200100	EARTH EXCAVATION	CU YD	32	32					44000156	HOT-MIX ASPHALT SURFACE REMOVAL, 1 3/4"	SO YD	29650	29650				
21101615	TOPSOIL FURNISH AND PLACE, 4"	SO YD	300	300					44000600	SIDEWALK REMOVAL	SO FT	1500	1500				
25000400	NITROGEN FERTILIZER NUTRIENT	POUND	2	2					44201789	CLASS D PATCHES, TYPE II, 12 INCH	SO YD	820	820				
25000500	PHOSPHORUS FERTILIZER NUTRIENT	POUND	2	2					44201794	CLASS D PATCHES, TYPE III, 12 INCH	SO YD	380	380				
25000600	POTASSIUM FERTILIZER NUTRIENT	POUND	2	2					44201796	CLASS D PATCHES, TYPE IV, 12 INCH	SO YD	1200	1200				
25200110	SODDING, SALT TOLERANT	SO YD	300	300					60250200	CATCH BASINS TO BE ADJUSTED	EACH	13	13				
25200200	SUPPLEMENTAL WATERING	UNIT	1	1					60255500	MANHOLES TO BE ADJUSTED	EACH	5	5				
40600290	BITUMINOUS MATERIALS (TACK COAT)	POUND	13700	13700					60300305	FRAMES AND LIDS TO BE ADJUSTED	EACH	26	26				
40600400	MIXTURE FOR CRACKS, JOINTS, AND FLANGEWAYS	TON	45	45				*	63000001	STEEL PLATE BEAM GUARDRAIL, TYPE A, 6 FOOT POSTS	FOOT	100	100				
40600982	HOT-MIX ASPHALT SURFACE REMOVAL - BUTT JOINT	SO YD	250	250					63200310	GUARDRAIL REMOVAL	FOOT	100	100				
40604172	POLYMERIZED HOT-MIX ASPHALT SURFACE COURSE, IL-9.5, MIX "E", N70	TON	2906	2906				*	66900200	NON-SPECIAL WASTE DISPOSAL	CU YD	30	30				
42001300	PROTECTIVE COAT	SO YD	150	150				*	66900530	SOIL DISPOSAL ANALYSIS	EACH	3	3				
42400200	PORTLAND CEMENT CONCRETE SIDEWALK 5 INCH	SO FT	2000	2000				*	66901001	REGULATED SUBSTANCES PRE-CONSTRUCTION PLAN	L SUM	1	1				
42400800	DETECTABLE WARNINGS	SO FT	310	310				*	66901003	REGULATED SUBSTANCES FINAL CONSTRUCTION REPORT	L SUM	1	1				
								*	66901006	REGULATED SUBSTANCES MONITORING	CAL DA	8	8				

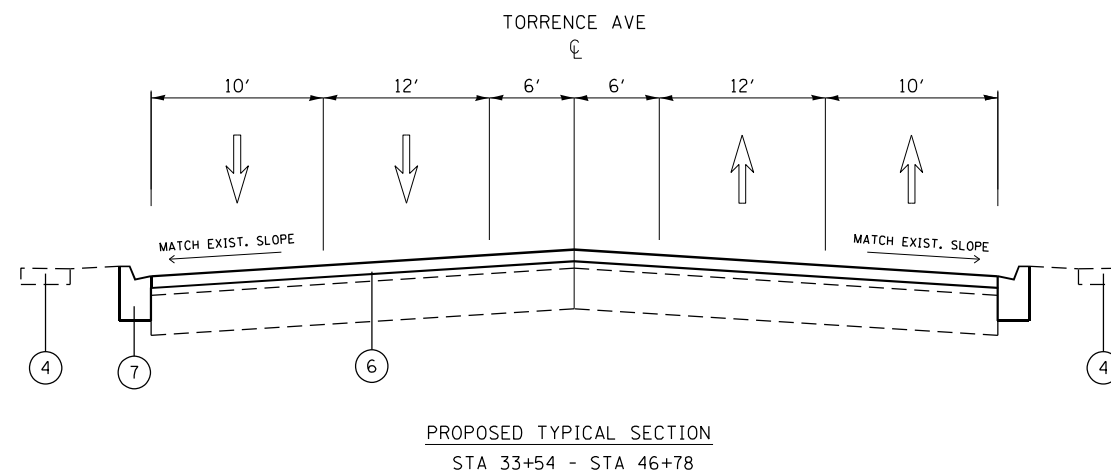
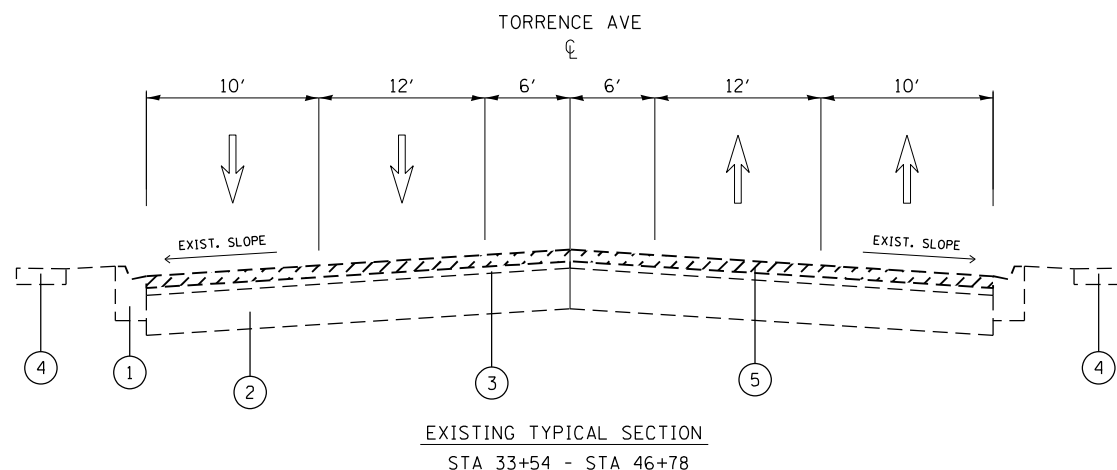
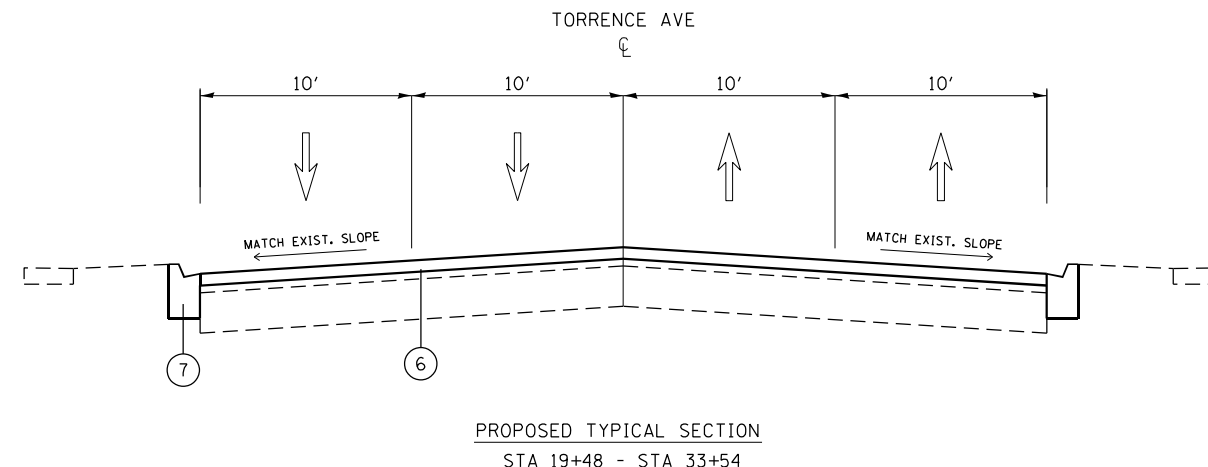
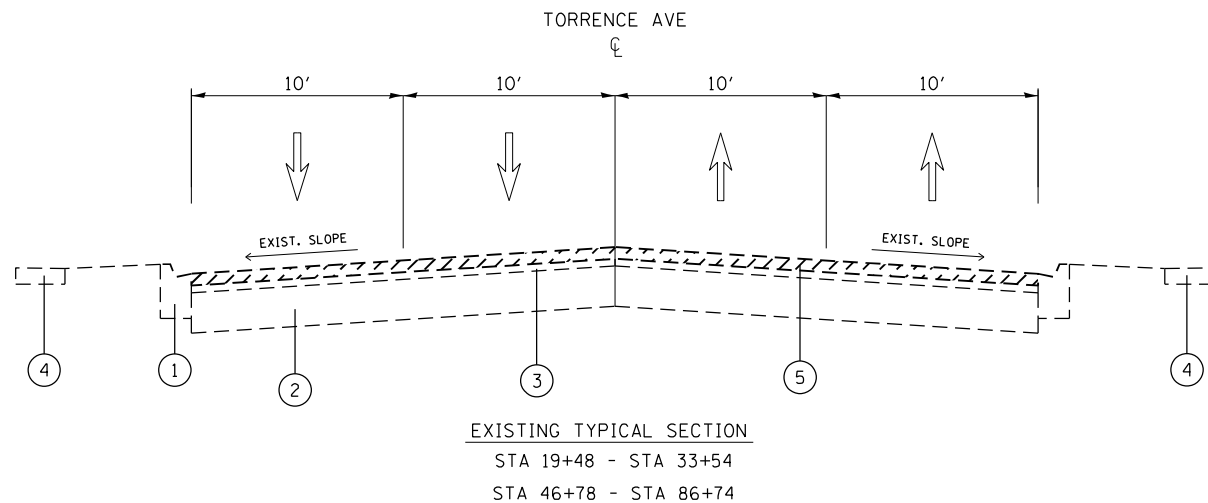
REV-SEP
 * = SPECIALTY ITEMS
 △ = NON-PARTICIPATING WORK (100% STATE)

SUMMARY OF QUANTITIES				CONSTRUCTION TYPE CODE					SUMMARY OF QUANTITIES				CONSTRUCTION TYPE CODE						
CODE NO	ITEM	UNIT	TOTAL QUANTITIES URBAN	80% FED 20% STATE 0005	100% STATE 0005					CODE NO	ITEM	UNIT	TOTAL QUANTITIES URBAN	80% FED 20% STATE 0005	100% STATE 0005				
67000400	ENGINEER'S FIELD OFFICE, TYPE A	CAL MO	12	12						70300220	TEMPORARY PAVEMENT MARKING - LINE 4"	FOOT	14445	14445					
67100100	MOBILIZATION	L SUM	1	1						70300240	TEMPORARY PAVEMENT MARKING - LINE 6"	FOOT	1270	1270					
70102620	TRAFFIC CONTROL AND PROTECTION, STANDARD	L SUM	1	1						70300260	TEMPORARY PAVEMENT MARKING - LINE 12"	FOOT	600	600					
	701501									70300280	TEMPORARY PAVEMENT MARKING - LINE 24"	FOOT	250	250					
70102625	TRAFFIC CONTROL AND PROTECTION, STANDARD	L SUM	1	1						70300520	PAVEMENT MARKING TAPE, TYPE III 4"	FOOT	4500	4500					
	701606									* 78000100	THERMOPLASTIC PAVEMENT MARKING - LETTERS AND SYMBOLS	SO FT	155	155					
70102630	TRAFFIC CONTROL AND PROTECTION, STANDARD	L SUM	1	1						* 78000200	THERMOPLASTIC PAVEMENT MARKING - LINE 4"	FOOT	14445	14445					
	701601									* 78000400	THERMOPLASTIC PAVEMENT MARKING - LINE 6"	FOOT	1270	1270					
70102632	TRAFFIC CONTROL AND PROTECTION, STANDARD	L SUM	1	1						* 78000600	THERMOPLASTIC PAVEMENT MARKING - LINE 12"	FOOT	600	600					
	701602									* 78000650	THERMOPLASTIC PAVEMENT MARKING - LINE 24"	FOOT	250	250					
70102634	TRAFFIC CONTROL AND PROTECTION, STANDARD	L SUM	1	1						* 78100100	RAISED REFLECTIVE PAVEMENT MARKER	EACH	1092	1092					
	701611									78300200	RAISED REFLECTIVE PAVEMENT MARKER REMOVAL	EACH	546	546					
70102635	TRAFFIC CONTROL AND PROTECTION, STANDARD	L SUM	1	1						* 85000200	MAINTENANCE OF EXISITING TRAFFIC SIGNAL INSTALLATION	EACH	1	1					
	701701									* 88600600	DETECTOR LOOP REPLACEMENT	FOOT	600	600					
70102640	TRAFFIC CONTROL AND PROTECTION, STANDARD	L SUM	1	1						* 89500400	RELOCATE EXISITING PEDESTRIAN PUSH BUTTON	EACH	4	4					
	701801																		
70300100	SHORT TERM PAVEMENT MARKING	FOOT	9000	9000															
70300150	SHORT TERM PAVEMENT MARKING REMOVAL	SO FT	3000	3000															
70300210	TEMPORARY PAVEMENT MARKING LETTERS AND SYMBOLS	SO FT	155	155															

REV-SEP
 * = SPECIALTY ITEMS
 △ = NON-PARTICIPATING WORK (100% STATE)

LEGEND

- 1. EXISTING COMBINATION CONCRETE CURB AND GUTTER
- 2. EXISTING PCC BASE COURSE, 10"
- 3. EXISTING HMA 1 1/4" +/- (AFTER MILLING)
- 4. EXISTING SIDEWALK, 5'
- 5. PROPOSED HMA SURFACE REMOVAL, 1 3/4"
- 6. PROPOSED HOT-MIX ASPHALT SURFACE COURSE, POLY HMA SC IL-9.5, MIX E N70; 1 3/4"
- 7. PROPOSED COMBINATION CURB AND GUTTER (REMOVAL AND REPLACEMENT TO BE DETERMINED BY THE RE)



HOT-MIX ASPHALT MIXTURE REQUIREMENTS		QUALITY MANAGEMENT PROGRAM (QMP)
MIXTURE TYPE	AIR VOIDS(%) @ Ndes	
PAVEMENT		
POLY HMA SC IL-9.5, MIX E, N70; 1 3/4"	4.0% @ 70 GYR.	OCP
PATCHING		
CLASS D PATCHES (HMA BINDER IL-19 MM)	4% @ 70 GYR.	QC/OA
QMP DESIGNATION: QUALITY CONTROL/QUALITY ASSURANCE (QC/OA); QUALITY CONTROL FOR PERFORMANCE (OCP); PAY FOR PERFORMANCE (PFP)		

NOTE 1: THE UNIT WEIGHT USED TO CALCULATE ALL HOT-MIX ASPHALT SURFACE MIXTURE QUANTITIES IS 112 LBS/SQ YD/IN.
 NOTE 2: THE "AC TYPE" FOR POLYMERIZED HMA MIXES SHALL BE "SBS/SBR PG 76 -22" AND AND FOR NON-POLYMERIZED HMA THE "AC TYPE" SHALL BE "PG 64 -22" UNLESS MODIFIED BY SPECIAL PROVISIONS.
 FOR USE OF RECYCLED MATERIALS SEE SPECIAL PROVISIONS.
 NOTE 3: "QUALITY MANAGEMENT PROGRAM (QMP) IDENTIFIES THE PARTICULAR QUALITY CONTROL SPECIFICATION THAT APPLIES TO THE HMA MIXTURE"
 NOTE 4: THE CONTRACTOR SHALL MILL BEFORE PATCHING
 NOTE 5: THE LONGITUDINAL JOINT SEALANT SHALL BE PLACED OVER THE MILLED SURFACE

MODEL: Default
 FILE NAME: p:\hammon.dwg
 PROJECT: I:\Projects\153620\CADDData\Design\153620-sh-ty-sec.dwg

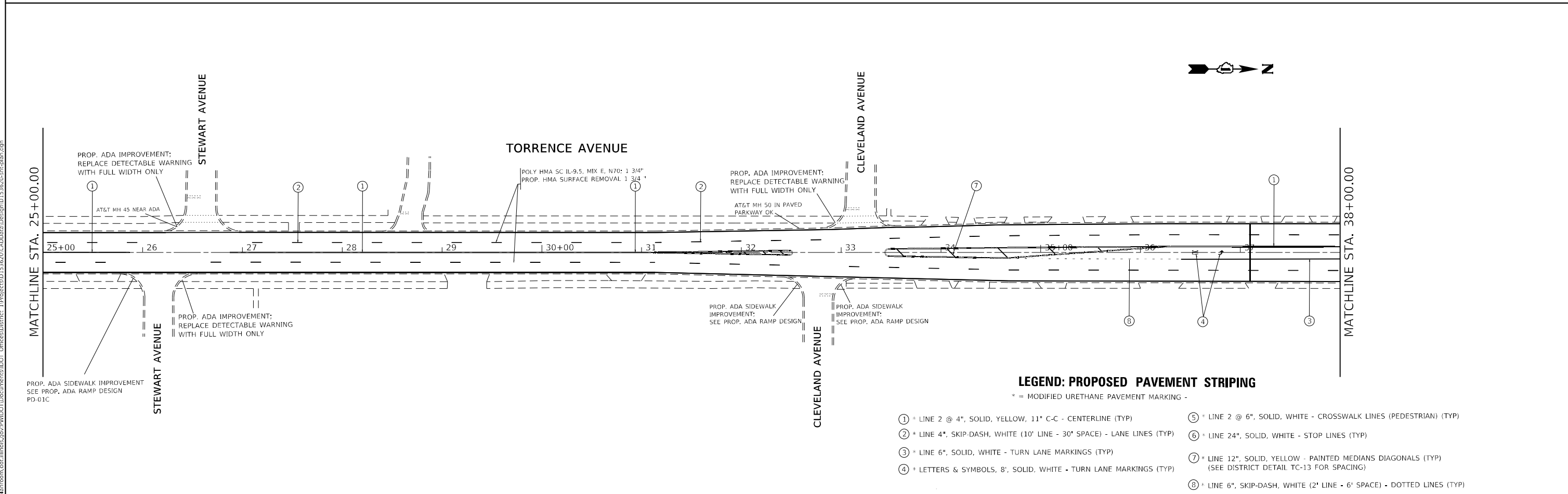
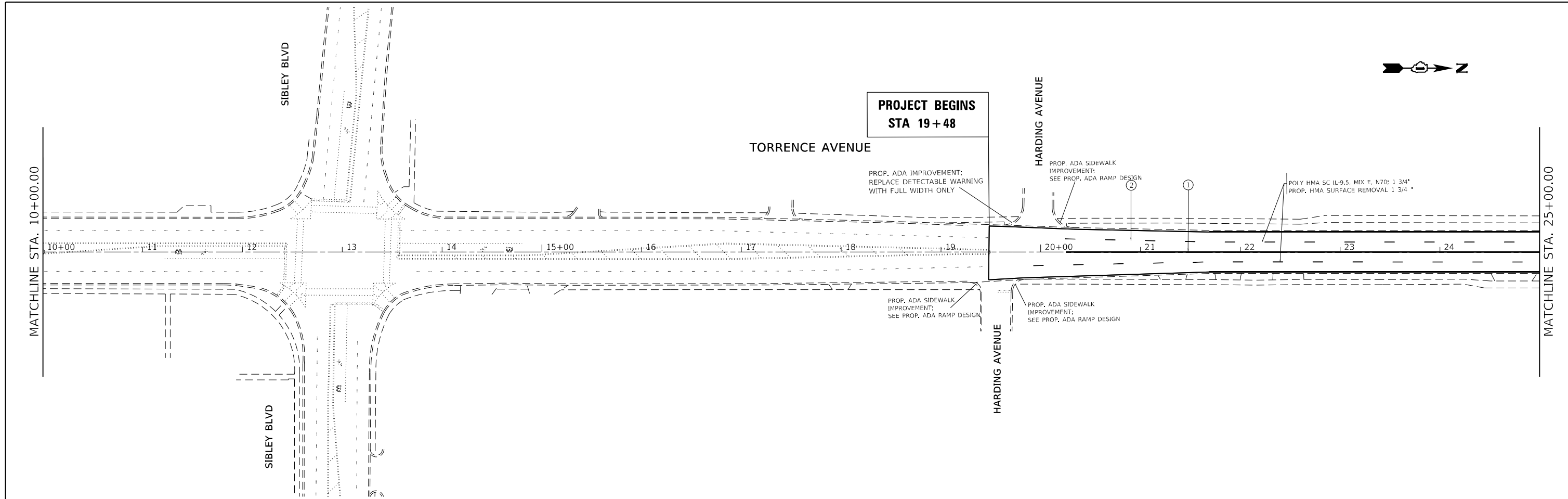
USER NAME = hamwim	DESIGNED -	REVISED -
PLOT SCALE = 100,0002' / in.	DRAWN -	REVISED -
PLOT DATE = 1/29/2021	CHECKED -	REVISED -
	DATE -	REVISED -

**STATE OF ILLINOIS
DEPARTMENT OF TRANSPORTATION**

**TYPICAL SECTION
TORRENCE AVE. (HARDING AVE. - GRAND CALUMET RIVER.)**

SCALE: SHEET OF SHEETS STA. TO STA.

F.A.P. RTE.	SECTION	COUNTY	TOTAL SHEETS	SHEET NO.
358	2020-136-R5&SW	COOK	23	6
CONTRACT NO. 62M14				
ILLINOIS FED. AID PROJECT				



- LEGEND: PROPOSED PAVEMENT STRIPING**
 * = MODIFIED URETHANE PAVEMENT MARKING -
- ① * LINE 2 @ 4", SOLID, YELLOW, 11" C-C - CENTERLINE (TYP)
 - ⑤ * LINE 2 @ 6", SOLID, WHITE - CROSSWALK LINES (PEDESTRIAN) (TYP)
 - ② * LINE 4", SKIP-DASH, WHITE (10' LINE - 30' SPACE) - LANE LINES (TYP)
 - ⑥ * LINE 24", SOLID, WHITE - STOP LINES (TYP)
 - ③ * LINE 6", SOLID, WHITE - TURN LANE MARKINGS (TYP)
 - ⑦ * LINE 12", SOLID, YELLOW - PAINTED MEDIANS DIAGONALS (TYP)
(SEE DISTRICT DETAIL TC-13 FOR SPACING)
 - ④ * LETTERS & SYMBOLS, 8", SOLID, WHITE - TURN LANE MARKINGS (TYP)
 - ⑧ * LINE 6", SKIP-DASH, WHITE (2' LINE - 6' SPACE) - DOTTED LINES (TYP)

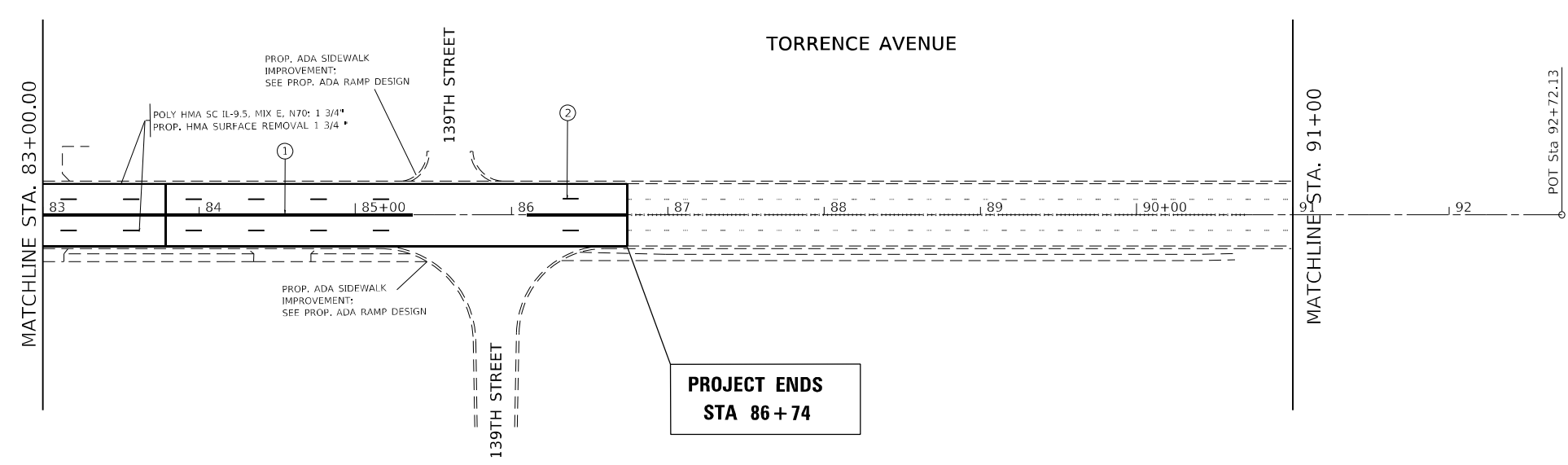
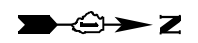
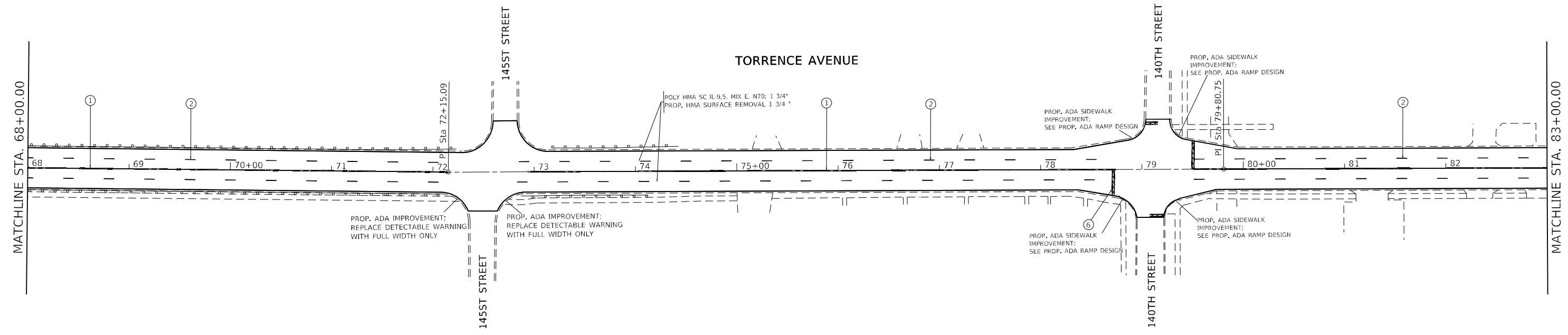
MODEL: Default
 FILE NAME: p:\projects\153620\CADDData\Design\153620-sh-4-lb-001.dwg
 PROJECT: 153620-CADDData\Design\153620-sh-4-lb-001.dwg

USER NAME = hamwim	DESIGNED -	REVISED -
	DRAWN -	REVISED -
PLOT SCALE = 100,0000' / in.	CHECKED -	REVISED -
PLOT DATE = 1/29/2021	DATE -	REVISED -

**STATE OF ILLINOIS
DEPARTMENT OF TRANSPORTATION**

EXISTING AND PROPOSED ROADWAY PLAN			
TORRENCE AVE. (HARDING AVE. TO GRAND CALUMET RIVER)			
SCALE: 1" = 50'	SHEET	OF SHEETS	STA. TO STA.

F.A.P. RTE.	SECTION	COUNTY	TOTAL SHEETS	SHEET NO.
358	2020-136-R5&RW	COOK	23	7
			CONTRACT NO. 62M14	
		ILLINOIS	FED. AID PROJECT	



LEGEND: PROPOSED PAVEMENT STRIPING

* = MODIFIED URETHANE PAVEMENT MARKING -

- ① * LINE 2 @ 4", SOLID, YELLOW, 11" C-C - CENTERLINE (TYP)
- ② * LINE 4", SKIP-DASH, WHITE (10' LINE - 30' SPACE) - LANE LINES (TYP)
- ③ * LINE 6", SOLID, WHITE - TURN LANE MARKINGS (TYP)
- ④ * LETTERS & SYMBOLS, 8", SOLID, WHITE - TURN LANE MARKINGS (TYP)
- ⑤ * LINE 2 @ 6", SOLID, WHITE - CROSSWALK LINES (PEDESTRIAN) (TYP)
- ⑥ * LINE 24", SOLID, WHITE - STOP LINES (TYP)
- ⑦ * LINE 12", SOLID, YELLOW - PAINTED MEDIANS DIAGONALS (TYP)
(SEE DISTRICT DETAIL TC-13 FOR SPACING)
- ⑧ * LINE 6", SKIP-DASH, WHITE (2' LINE - 6' SPACE) - DOTTED LINES (TYP)

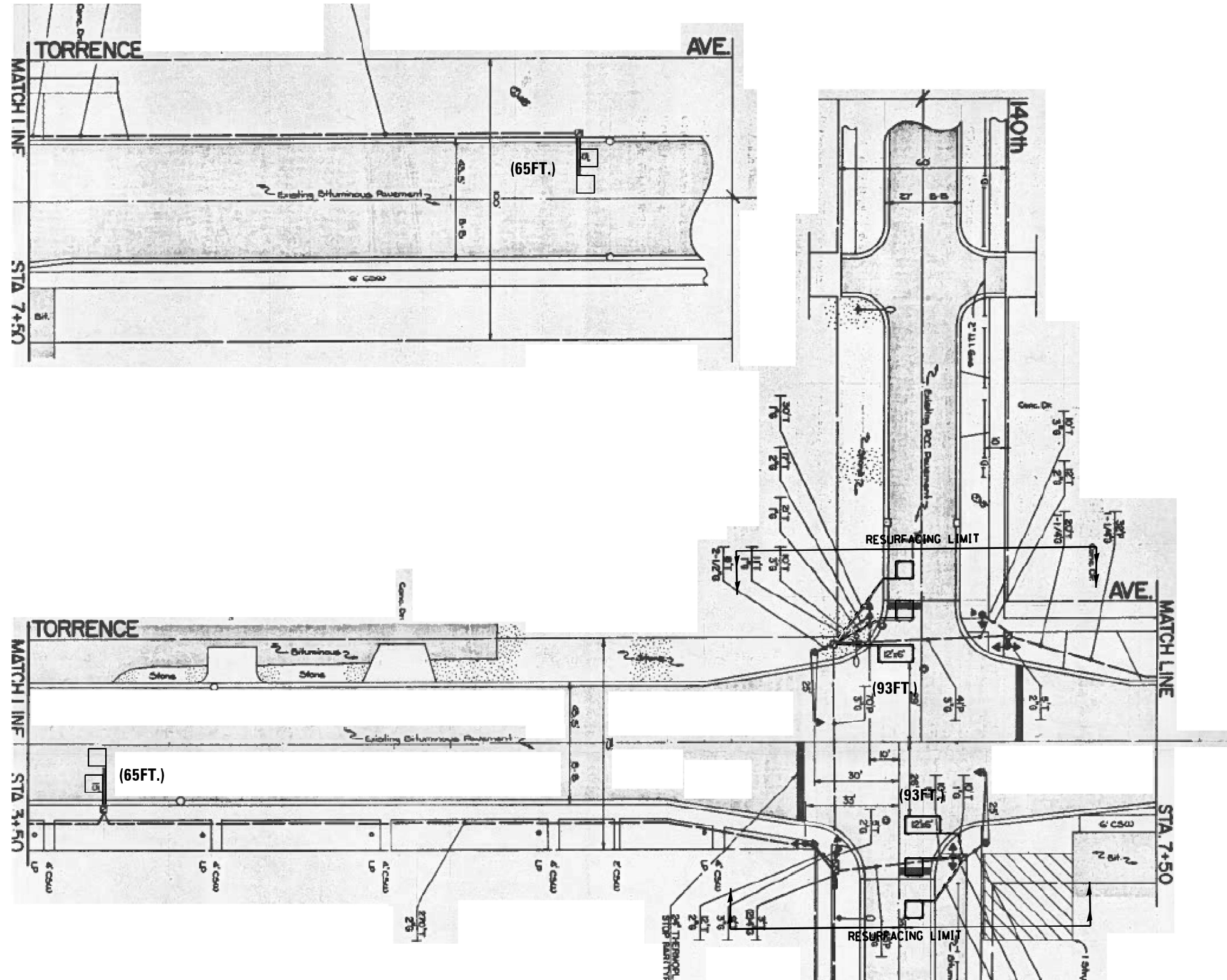
MODEL: Default
 FILE NAME: p:\projects\153620\CADDData\Design\153620-shl-pln.dgn
 PROJECT: 153620\DOT\Office\District 1\Projects\153620\CADDData\Design\153620-shl-pln.dgn

USER NAME = hamwim	DESIGNED -	REVISED -
	DRAWN -	REVISED -
PLOT SCALE = 100,0000' / in.	CHECKED -	REVISED -
PLOT DATE = 1/29/2021	DATE -	REVISED -

**STATE OF ILLINOIS
DEPARTMENT OF TRANSPORTATION**

EXISTING AND PROPOSED ROADWAY PLAN			
TORRENCE AVE. (HARDING AVE. TO GRAND CALUMET RIVER)			
SCALE: 1" = 50'	SHEET	OF SHEETS	STA. TO STA.

F.A.P. RTE.	SECTION	COUNTY	TOTAL SHEETS	SHEET NO.
358	2020-136-R5&RW	COOK	23	9
CONTRACT NO. 62M14				
ILLINOIS		FED. AID PROJECT		



**REPLACE ALL DETECTOR LOOPS AS SHOWN
(WITHIN THE RESURFACING LIMITS)**

NOTES:

1. WORK SHALL MEET THE REQUIREMENTS OF THE SPECIAL PROVISION, "DETECTOR LOOP REPLACEMENT AND/OR INSTALLATION (ROADWAY GRINDING, RESURFACING & PATCHING OPERATIONS).
2. THIS PLAN IS FOR THE SOLE PURPOSE OF DETECTOR LOOP REPLACEMENT.

CODE	ITEM	QUANTITY	UNIT	
88600600	DETECTOR LOOP REPLACEMENT	316	FOOT	TS#4530

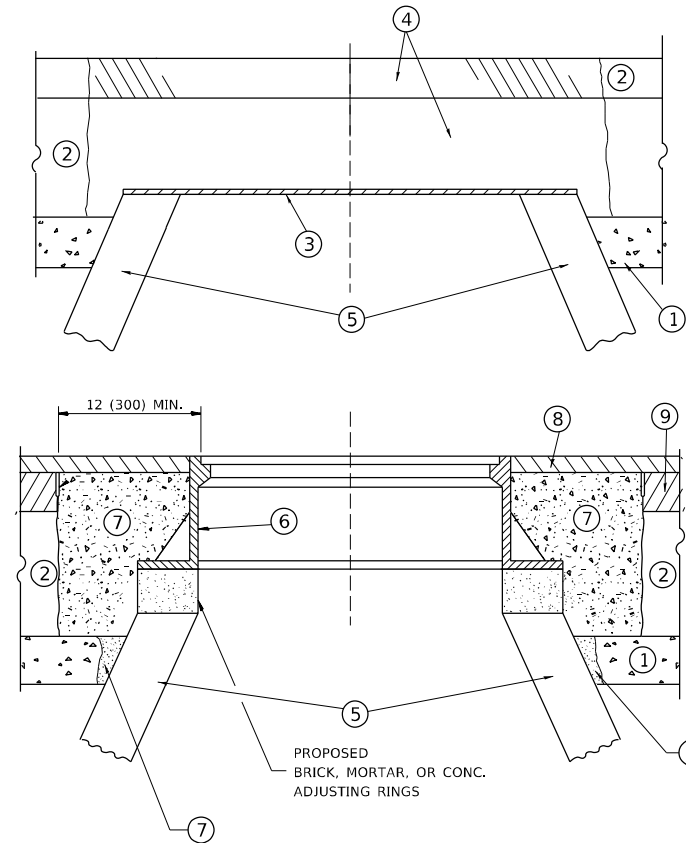
MODEL: Default
 FILE NAME: p:\hammon.dwg
 PROJECT: 2020-136-R5&SW
 PROJECT DATE: 1/29/2021
 PROJECT LOCATION: ILLINOIS
 PROJECT DESCRIPTION: DETECTOR LOOP REPLACEMENT PLAN
 PROJECT NUMBER: 62M14

USER NAME = hamwim	DESIGNED -	REVISED -
PLOT SCALE = 100,0000' / in.	DRAWN -	REVISED -
PLOT DATE = 1/29/2021	CHECKED -	REVISED -
	DATE -	REVISED -

**STATE OF ILLINOIS
DEPARTMENT OF TRANSPORTATION**

DETECTOR LOOP REPLACEMENT PLAN			
IL (83) TORRENCE AVE AT 140TH STREET			
SCALE:	SHEET	OF SHEETS	STA. TO STA.

F.A.P. RTE.	SECTION	COUNTY	TOTAL SHEETS	SHEET NO.
358	2020-136-R5&SW	COOK	23	12
CONTRACT NO. 62M14				
ILLINOIS FED. AID PROJECT				



NOTES

EXISTING BROKEN FRAMES AND LIDS SHALL BE REMOVED AND DISPOSED OF BY THE CONTRACTOR AND SHALL BE REPLACED AS DIRECTED BY THE ENGINEER. REPLACEMENT FRAMES AND LIDS WILL BE PAID FOR IN ACCORDANCE WITH ARTICLE 109.04 OF THE STANDARD SPECIFICATIONS UNLESS A SEPARATE PAY ITEM HAS BEEN PROVIDED.

IF THE EXISTING LIDS ARE OPEN, THE FRAME WILL BE ADJUSTED TO THE ELEVATION OF THE MILLED PAVEMENT SURFACE PRIOR TO THE MILLING OPERATION. THE FRAME WILL NOT BE REMOVED AND COVERED BY THE METAL PLATE.

CITY OF CHICAGO CASTINGS ARE THE PROPERTY OF THE CITY AND THE CONTRACTOR SHALL NOTIFY THE CITY FOR REMOVAL AND DISPOSITION OF THE CASTINGS.

THE METAL PLATE USED TO COVER THE STRUCTURE SHALL REMAIN THE PROPERTY OF THE CONTRACTOR.

WHEN STRUCTURES ARE TO BE ADJUSTED OR RECONSTRUCTED, THE LOWERING AND RAISING OF THE FRAMES AND LIDS WILL NOT BE PAID FOR SEPARATELY BUT WILL BE INCLUDED IN THE COST OF THE CORRESPONDING PAY ITEM.

CONSTRUCTION PROCEDURES

STAGE 1 (BEFORE PAVEMENT MILLING)

- A) REMOVE A MINIMUM OF 12 (300) OF THE PAVEMENT FROM AROUND THE STRUCTURE.
- B) REMOVE THE EXISTING FRAME AND LID FROM THE STRUCTURE.
- C) COVER THE STRUCTURE OPENING WITH A 36 (900) DIAMETER METAL PLATE.
- D) BACKFILL WITH CRUSHED STONE AND A MINIMUM 1½ (40) THICK HMA SURFACE MIX APPROVED BY THE ENGINEER.

STAGE 2 (AFTER PAVEMENT MILLING)

- A) REMOVE THE HMA SURFACE MIX AND CRUSHED STONE.
- B) INSTALL THE FRAME AND LID; ADJUST THE FRAME TO ITS FINAL SURFACE ELEVATION.
- C) THE SURROUNDING SPACE SHALL BE FILLED WITH CLASS PP-1 * CONCRETE TO THE ELEVATION OF THE SURFACE OF THE EXISTING BASE COURSE OR THE BINDER COURSE.

* UNLESS OTHERWISE SPECIFIED IN THE PLANS.

THE PROCEDURE EXPLAINED ABOVE SHALL CONFORM TO THE APPLICABLE PORTIONS OF SECTIONS 353, 406, 602, AND 603 OF THE STANDARD SPECIFICATIONS EXCEPT THAT "THE CONTRACTOR SHALL ADJUST THE STRUCTURES TO THE FINISHED PAVEMENT ELEVATION NO MORE THAN 5 CALENDAR DAYS PRIOR TO PLACEMENT OF THE FINAL LIFT OF SURFACE UNLESS APPROVED BY THE ENGINEER."

LEGEND

- ① SUB-BASE GRANULAR MATERIAL
- ② EXISTING PAVEMENT
- ③ 36 (900) DIAMETER METAL PLATE
- ④ PROPOSED CRUSHED STONE AND HMA SURFACE MIX
- ⑤ EXISTING STRUCTURE
- ⑥ FRAME AND LID (SEE NOTES)
- ⑦ CLASS PP-1 *CONCRETE
- ⑧ PROPOSED HMA SURFACE COURSE
- ⑨ PROPOSED HMA BINDER COURSE

LOCATION OF STRUCTURES

THE CONTRACTOR WILL BE REQUIRED TO KEEP A RECORD OF THE LOCATIONS OF THE BURIED STRUCTURES ACCORDING TO THE STATION AND DISTANCE LEFT OR RIGHT OF THE CENTERLINE OF PAVEMENT. UPON COMPLETION OF THE WORK, THE CONTRACTOR WILL DELIVER THE RECORD TO THE ENGINEER.

BASIS OF PAYMENT

REMOVING FRAMES AND LIDS ON DRAINAGE AND UTILITY STRUCTURES IN THE PAVEMENT PRIOR TO MILLING, AND ADJUSTING TO FINAL GRADE PRIOR TO PLACING THE SURFACE COURSE, WILL BE PAID FOR AT THE CONTRACT UNIT PRICE EACH FOR "FRAMES AND LIDS TO BE ADJUSTED (SPECIAL)."

THIS WORK WILL NOT BE PAID FOR WHEN DRAINAGE AND UTILITY STRUCTURES ARE SPECIFIED FOR PAYMENT AS STRUCTURE RECONSTRUCTION.

NEW FRAMES AND LIDS, WHEN SPECIFIED, WILL BE PAID FOR SEPARATELY.

DETAILS FOR FRAMES AND LIDS ADJUSTMENT WITH MILLING

ALL DIMENSIONS ARE IN INCHES (MILLIMETERS) UNLESS OTHERWISE SHOWN

MODEL: Default
 FILE NAME: p:\hamroom.dwg
 PROJECT: I:\Projects\13620\CADDData\Design\DRS\Std.dgn

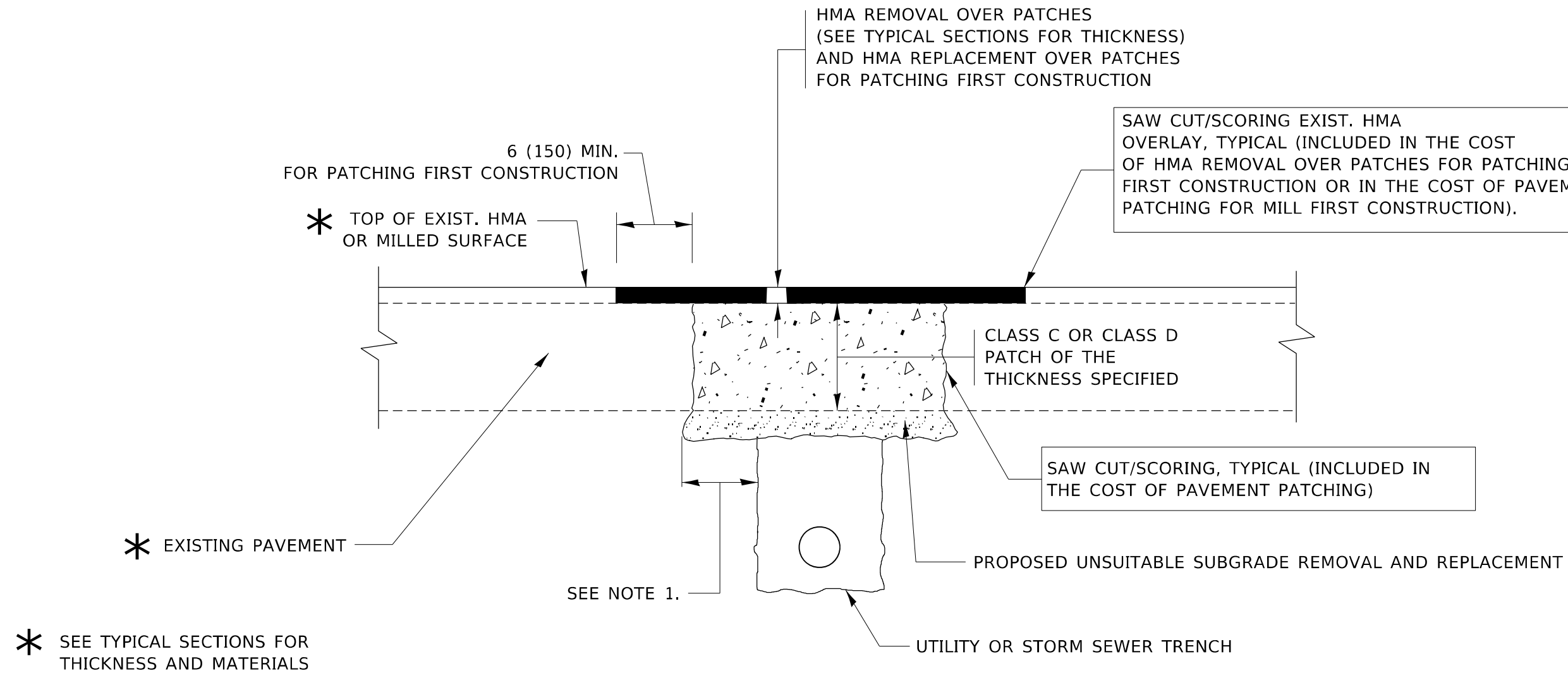
USER NAME = hamwim	DESIGNED - R. SHAH	REVISED - R. WEDEMAN 05-14-04
	DRAWN -	REVISED - R. BORO 01-01-07
PLOT SCALE = 100,0000' / in.	CHECKED -	REVISED - R. BORO 03-09-11
PLOT DATE = 1/29/2021	DATE - 10-25-94	REVISED - R. BORO 12-06-11

**STATE OF ILLINOIS
DEPARTMENT OF TRANSPORTATION**

**DETAILS FOR
FRAMES AND LIDS ADJUSTMENT WITH MILLING**

SCALE: NONE SHEET 1 OF 1 SHEETS STA. TO STA.

F.A.P. RTE.	SECTION	COUNTY	TOTAL SHEETS	SHEET NO.
358	2020-136-RS&RW	COOK	23	13
BD600-03 (BD-8)		CONTRACT NO. 62M14		
ILLINOIS		FED. AID PROJECT		



NOTES:

1. THE WIDTH OF THE FULL DEPTH PATCH OVER A TRENCH SHALL BE 12 (300) WIDER ON EACH SIDE OF THE TRENCH.
2. FOR METHOD OF MEASUREMENT AND BASIS OF PAYMENT, SEE RECURRING SPECIAL PROVISION "PATCHING WITH HOT-MIX ASPHALT OVERLAY REMOVAL".

SEQUENCE OF CONSTRUCTION (PATCHING FIRST)

1. REMOVE THE EXISTING HMA MATERIAL OVER THE AREA TO BE PATCHED.
2. REMOVE AND REPLACE WITH CLASS C OR D PATCH.
3. REPLACE HMA MATERIAL OVER THE AREA TO BE PATCHED.

SEQUENCE OF CONSTRUCTION (MILLING FIRST)

1. MILL HMA FIRST IF THERE IS AT LEAST 4½ INCHES OR MORE OF HMA MATERIAL ON TOP OF THE EXISTING PAVEMENT OR IF THE PAVEMENT IS FULL DEPTH HMA. A MINIMUM OF 2 INCHES OF HMA MATERIAL SHALL BE IN PLACE AFTER MILLING.
2. REMOVE AND REPLACE WITH FULL DEPTH CLASS D PATCHES TO TOP OF MILLED SURFACE.

ALL DIMENSIONS ARE IN INCHES (MILLIMETERS) UNLESS OTHERWISE SHOWN.

MODEL: Default
FILE NAME: \\paulhammon.dot.ilinois.gov\PIWDOT\Documents\DOT_Offices\Bartec\1\Projects\133620\CADD\Design\Design\BIS\BIS.dgn

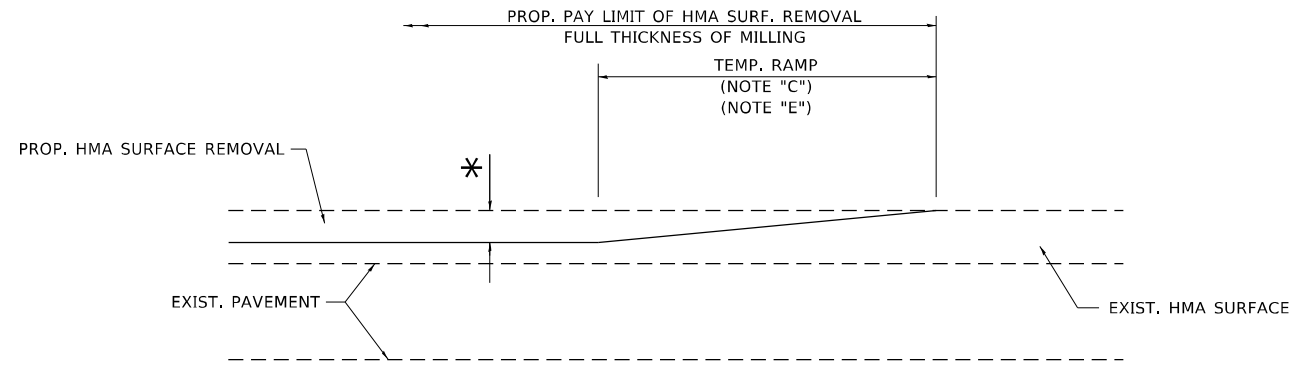
USER NAME = hamwim	DESIGNED - R. SHAH	REVISED - A. ABBAS 04-27-98
	DRAWN -	REVISED - R. BORO 01-01-07
PLOT SCALE = 100,0000' / in.	CHECKED -	REVISED - R. BORO 09-04-07
PLOT DATE = 1/29/2021	DATE - 10-25-94	REVISED - K. ENG 10-27-08

STATE OF ILLINOIS
DEPARTMENT OF TRANSPORTATION

PAVEMENT PATCHING FOR
HMA SURFACED PAVEMENT

SCALE: NONE SHEET 1 OF 1 SHEETS STA. TO STA.

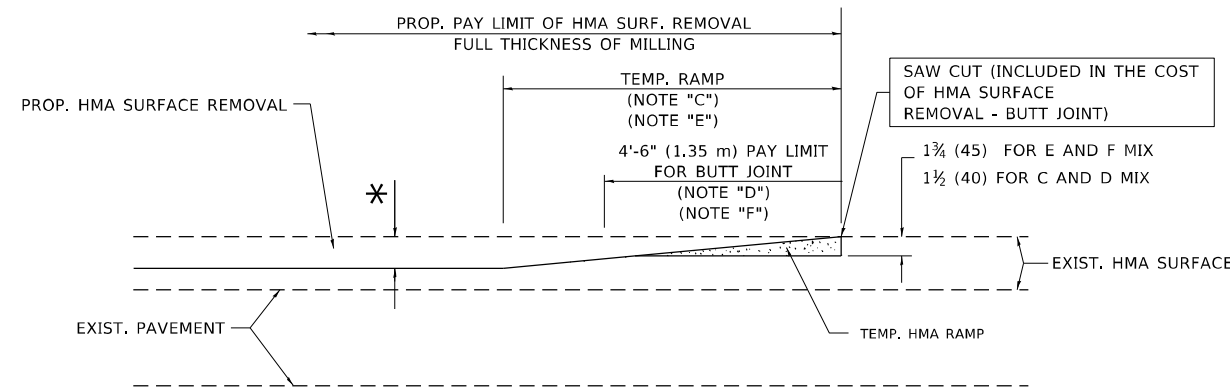
F.A.P. RTE.	SECTION	COUNTY	TOTAL SHEETS	SHEET NO.
358	2020-136-R5&RW	COOK	23	14
BD400-04 (BD-22)		CONTRACT NO. 62M14		
ILLINOIS FED. AID PROJECT				



MILLED TEMPORARY RAMP

(FOR BUTT JOINT AND HMA TAPER SEE DETAIL BELOW)

OPTION 1

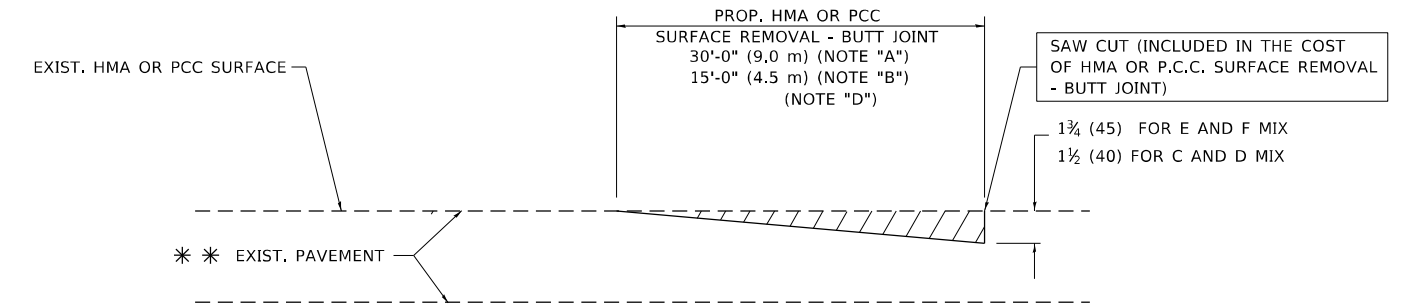


HMA CONSTRUCTED TEMPORARY RAMP

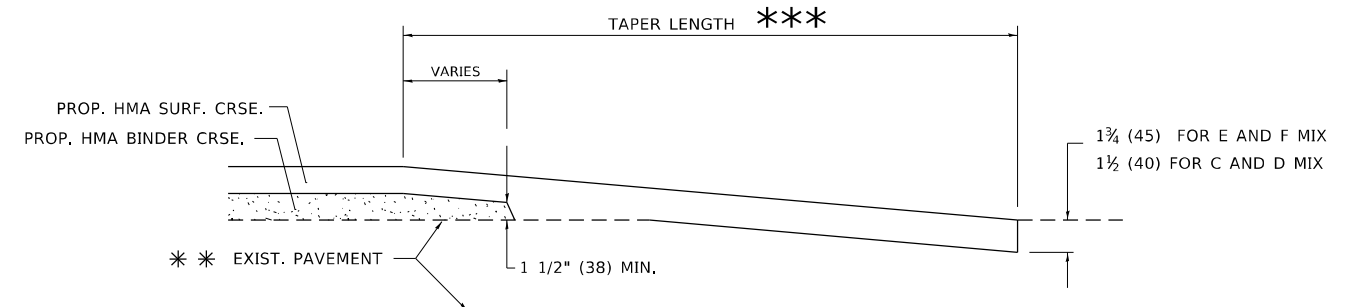
(FOR BUTT JOINT AND HMA TAPER SEE DETAIL BELOW)

OPTION 2

TYPICAL TEMPORARY RAMP



BUTT JOINT DETAIL



HMA TAPER DETAIL

TYPICAL BUTT JOINT AND HMA TAPER FOR RESURFACING ONLY

*** PC CONCRETE, HMA OR HMA RESURFACED PAVEMENT.

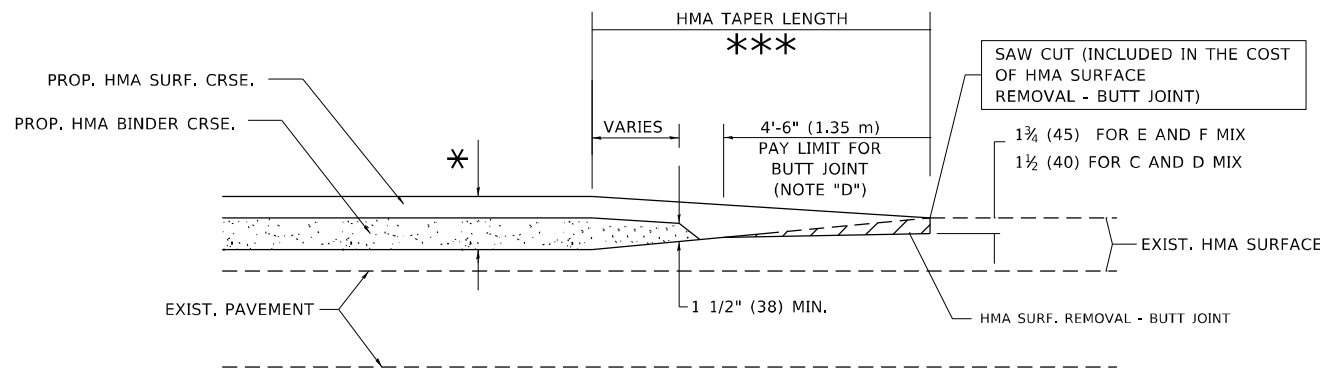
NOTES

- A. MAINLINE ROADWAYS AND MAJOR SIDE ROADS.
- B. MINOR SIDE ROADS.
- C. THE TEMP. RAMP SHALL BE CONSTRUCTED IMMEDIATELY UPON REMOVAL OF THE EXISTING HMA SURFACE.
- D. THE BUTT JOINT SHALL BE CONSTRUCTED IMMEDIATELY PRIOR TO PLACING THE PROPOSED HMA COURSES.
- E. TAPER THE TEMP. RAMP AT A RATE OF 3'-0" (900 mm) PER 1 INCH (25 mm) OF MILLING THICKNESS.
- F. INSTALLATION AND REMOVAL OF THE 4'-6" (1.35 m) TEMP. RAMP IS INCLUDED IN COST OF HMA SURFACE REMOVAL - BUTT JOINT.
* SEE TYPICAL SECTIONS FOR MILLING THICKNESS.
- G. SEE ARTICLE 406.08 AND 406.14 OF THE STANDARD SPECIFICATIONS FOR "HMA AND/OR PCC SURFACE REMOVAL, BUTT JOINT".
*** 20'-0" (6.1 m) PER 1 (25) RESURFACING (NOTE "A")
10'-0" (3.0 m) PER 1 (25) RESURFACING (NOTE "B")

BASIS OF PAYMENT

THE BUTT JOINT WILL BE PAID FOR AT THE CONTRACT UNIT PRICE PER SQUARE YARD (SQUARE METER) FOR "HOT-MIX ASPHALT SURFACE REMOVAL - BUTT JOINT" OR FOR "PORTLAND CEMENT CONCRETE SURFACE REMOVAL - BUTT JOINT".

ALL DIMENSIONS ARE IN INCHES (MILLIMETERS) UNLESS OTHERWISE SHOWN.



BUTT JOINT AND HMA TAPER

TYPICAL BUTT JOINT AND HMA TAPER FOR MILLING AND RESURFACING

MODEL: Default
FILE NAME: p:\mhammon.dwt\illinois\dot\Office\Drawings\1\Projects\133620\CADD\Drawings\Design\DRS54.dgn

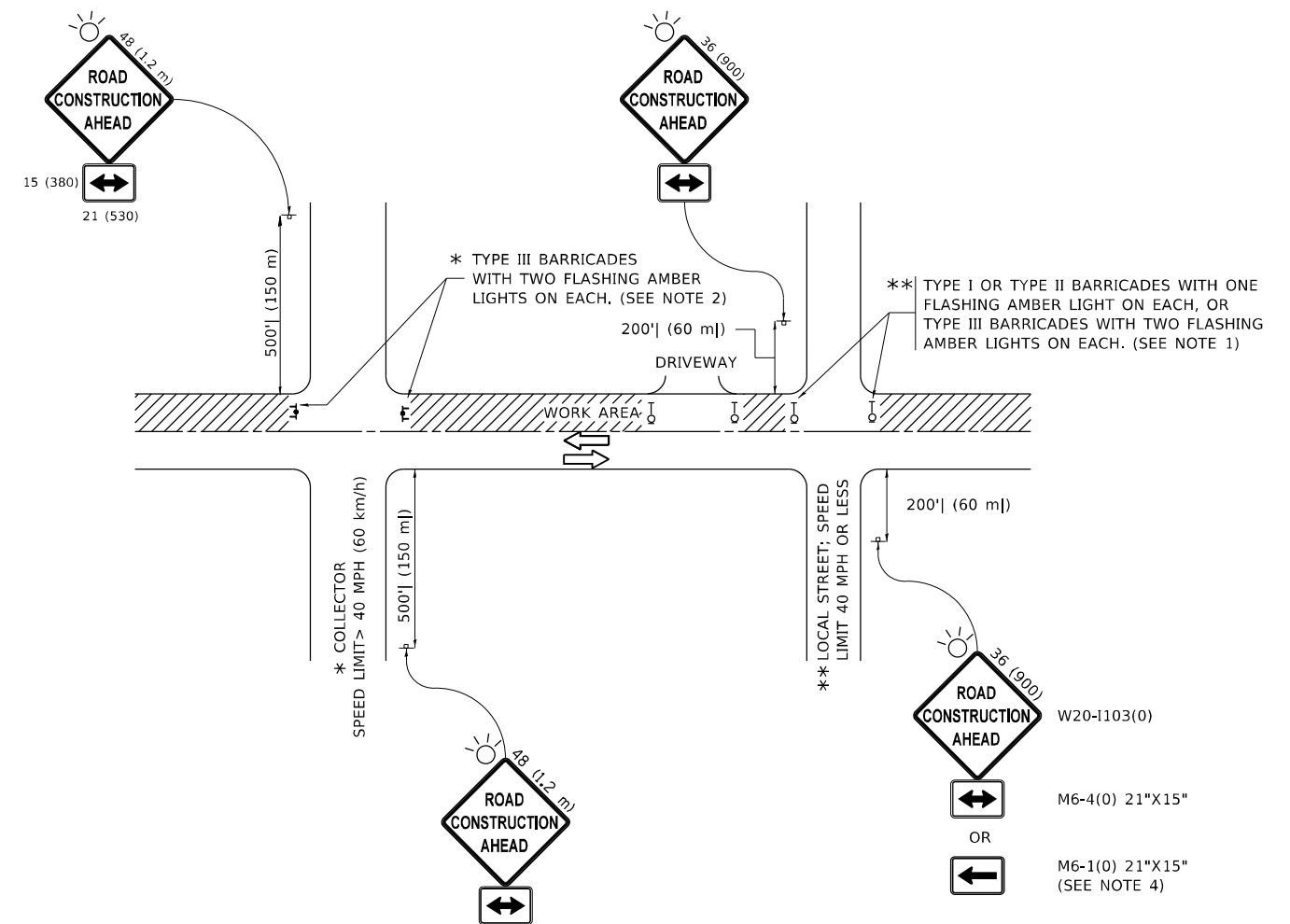
USER NAME = hamwim	DESIGNED - M. DE YONG	REVISED - R. SHAH 10-25-94
	DRAWN -	REVISED - A. ABBAS 03-21-97
PLOT SCALE = 100,0000' / in.	CHECKED -	REVISED - M. GOMEZ 04-06-01
PLOT DATE = 1/29/2021	DATE - 06-13-90	REVISED - R.BORO 01-01-07

**STATE OF ILLINOIS
DEPARTMENT OF TRANSPORTATION**

BUTT JOINT AND HMA TAPER DETAILS

SCALE: NONE SHEET 1 OF 1 SHEETS STA. TO STA.

F.A.P. RTE.	SECTION	COUNTY	TOTAL SHEETS	SHEET NO.
358	2020-136-R5&RW	COOK	23	16
BD400-05 BD32		CONTRACT NO. 62M14		
ILLINOIS FED. AID PROJECT				



NOTES:

1. SIDE ROAD WITH A SPEED LIMIT OF 40 MPH (60 km/h) OR LESS AS SHOWN ON THE DRAWING AND AS DIRECTED BY THE ENGINEER:
 - a) ONE "ROAD CONSTRUCTION AHEAD" SIGN 36 x 36 (900x900) WITH A FLASHER MOUNTED ON IT APPROXIMATELY 200' (60 m) IN ADVANCE OF THE MAIN ROUTE.
 - b) THE CLOSED PORTION OF THE MAIN ROUTE SHALL BE PROTECTED BY BLOCKING WITH TYPE I, TYPE II OR TYPE III BARRICADES, 1/3 OF THE CROSS SECTION OF THE CLOSED PORTION.
2. SIDE ROAD WITH A SPEED LIMIT GREATER THAN 40 MPH (60 km/h) AS SHOWN ON THE DRAWING AND AS DIRECTED BY THE ENGINEER:
 - a) ONE "ROAD CONSTRUCTION AHEAD" SIGN 48 x 48 (1.2 m x 1.2 m) WITH A FLASHER MOUNTED ON IT APPROXIMATELY 500' (150 m) IN ADVANCE OF THE MAIN ROUTE.
 - b) BLOCKING WITH TYPE III BARRICADES, 1/2 OF THE CROSS SECTION OF THE CLOSED PORTION.
3. CONES MAY BE SUBSTITUTED FOR BARRICADES OR DRUMS AT HALF THE SPACING DURING DAY OPERATIONS. CONES SHALL BE A MINIMUM OF 28 (710) IN HEIGHT.
4. SIGNING AND THE WORK ZONE, A SINGLE HEADED ARROW (M6-1) SHALL BE USED IN LIEU OF THE DOUBLE HEADED ARROW (M6-4).
5. WHEN WORK IS BEING PERFORMED ON A SIDE ROAD OR DRIVEWAY, FOLLOW THE APPLICABLE STANDARD(S). THE DIRECTIONAL ARROW (M6-1 OR M6-4) SHALL BE COVERED OR REMOVED WHEN NO LONGER CONSISTENT WITH THE TRAFFIC CONTROL SET-UP.
6. ADVANCE WARNING SIGNS ARE TO BE OMITTED ON DRIVEWAYS UNLESS OTHERWISE SPECIFIED IN THE PLANS OR BY THE ENGINEER.
7. THE TRAFFIC CONTROL AND PROTECTION FOR SIDE ROADS, INTERSECTIONS, AND DRIVEWAYS SHALL BE INCLUDED IN THE COST OF SPECIFIED TRAFFIC CONTROL STANDARDS OR ITEMS.

All dimensions are in inches (millimeters) unless otherwise shown.

MODEL: Default
 FILE NAME: p:\hamroom.dwg
 PROJECT: 133620\CADDData\Design\DisStd.dwg

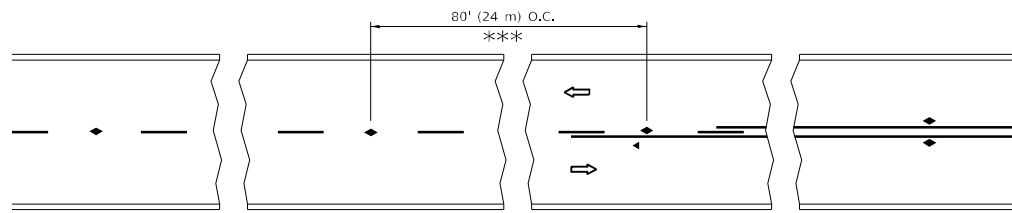
USER NAME = hamwim	DESIGNED - L.H.A.	REVISED - A. HOUSEH 10-15-96
PLOT SCALE = 100,0000' / in.	CHECKED -	REVISED - T. RAMMACHER 01-06-00
PLOT DATE = 1/29/2021	DATE - 06-89	REVISED - A. SCHUETZE 07-01-13
		REVISED - A. SCHUETZE 09-15-16

**STATE OF ILLINOIS
DEPARTMENT OF TRANSPORTATION**

**TRAFFIC CONTROL AND PROTECTION FOR
SIDE ROADS, INTERSECTIONS, AND DRIVEWAYS**

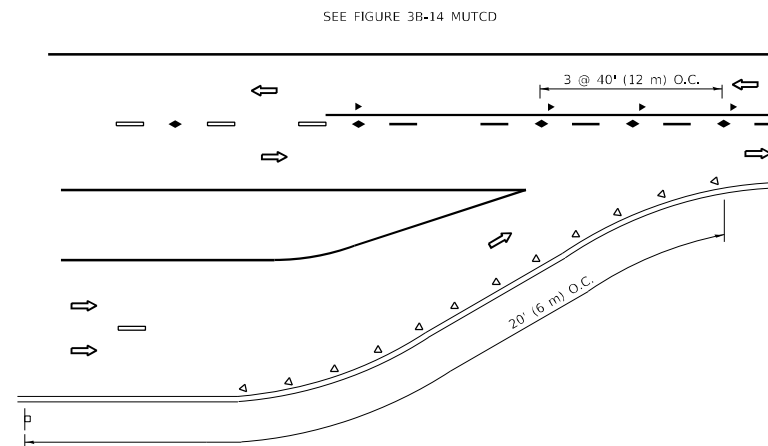
SCALE: NONE SHEET 1 OF 1 SHEETS STA. TO STA.

F.A.P. RTE.	SECTION	COUNTY	TOTAL SHEETS	SHEET NO.
358	2020-136-R5&RW	COOK	23	17
TC-10			CONTRACT NO. 62M14	
ILLINOIS FED. AID PROJECT				

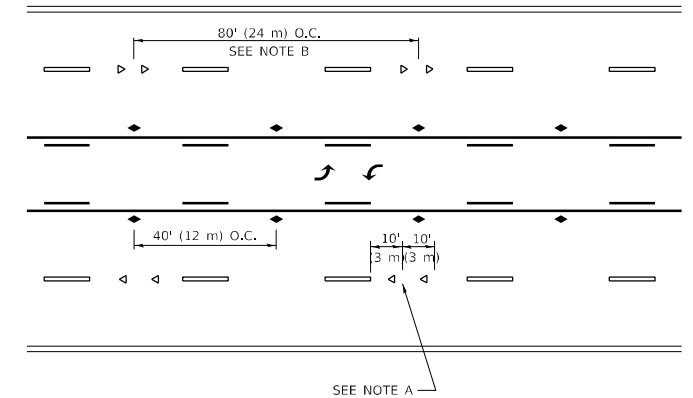


*** REDUCE TO 40' (12 m) O.C. ON CURVES WITH POSTED OR ADVISORY SPEED 45 M.P.H. (70 km/h) OR LESS.

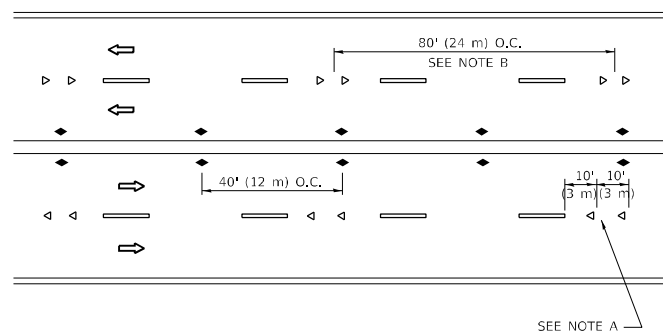
TWO-LANE/TWO-WAY



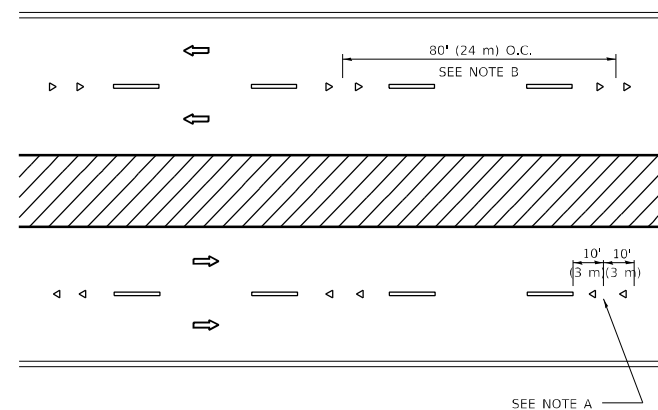
LANE REDUCTION TRANSITION



TWO-WAY LEFT TURN



MULTI-LANE/UNDIVIDED



MULTI-LANE/DIVIDED

GENERAL NOTES

1. MARKERS USED WITH DASHED LINES SHALL BE CENTERED IN THE GAP BETWEEN SEGMENTS.
2. MARKERS USED ADJACENT TO SOLID LINES SHALL BE OFFSET 2 TO 3 (50 TO 75) TOWARD TRAFFIC AS SHOWN.
3. MARKERS THROUGH TANGENTS LESS THAN 500' (150 m) IN LENGTH BETWEEN CURVES SHALL BE INSTALLED AT THE LESSER OF THE TWO CURVE SPACINGS.
4. MARKERS ARE TO BE USED ADJACENT TO BOTH SOLID WHITE LINES IN DUAL LEFT TURN LANES

SYMBOLS

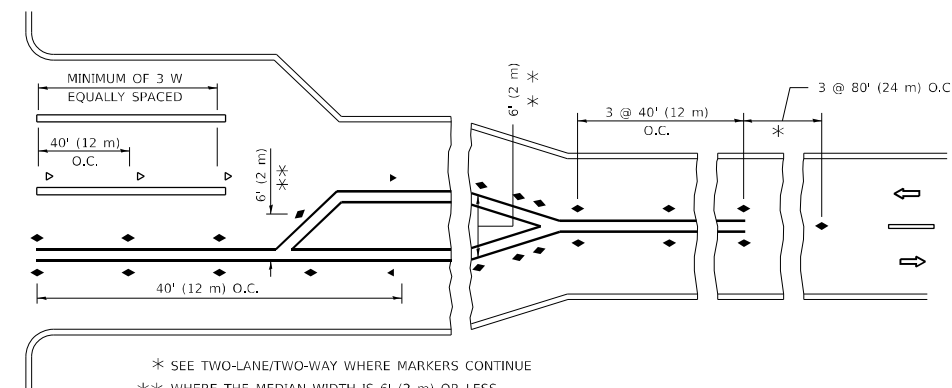
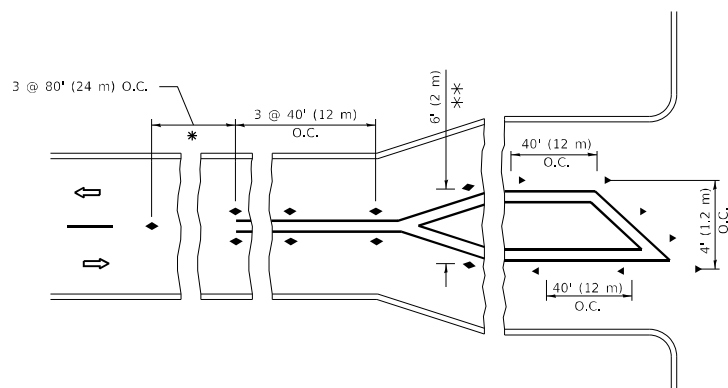
- YELLOW STRIPE
- WHITE STRIPE
- ◀ ONE-WAY AMBER MARKER
- ◀ ONE-WAY CRYSTAL MARKER (W/O)
- ◆ TWO-WAY AMBER MARKER

LANE MARKER NOTES

- A. USE DOUBLE LANE LINE MARKERS SPACED AS SHOWN.
- B. REDUCE TO 40' (12 m) O.C. ON CURVES WHERE ADVISORY SPEEDS ARE 10 M.P.H. (20 km/h) LOWER THAN POSTED SPEEDS.

DESIGN NOTES

1. DOUBLE LANE LINE MARKERS SHALL BE USED UNLESS SPECIFIED OTHERWISE.
2. EXCEPT AS SHOWN ON THE LANE REDUCTION TRANSITION AND FREEWAY EXIT RAMP DETAIL, MARKERS ARE NOT TO BE SPECIFIED ON RIGHT EDGE LINES.
3. THE EXACT MARKER LIMITS, SPACING, AND COLOR SHALL BE INCLUDED IN THE PLANS WHEN STANDARD SPECIFICATIONS ARE NOT BEING USED.
4. MARKERS SHOULD NOT BE USED ALONGSIDE CURBS EXCEPT FOR EXTREMELY SHORT SECTIONS OF CURBS WHERE NOT MORE THAN TWO MARKERS WOULD BE INVOLVED.



TURN LANES

* SEE TWO-LANE/TWO-WAY WHERE MARKERS CONTINUE
 ** WHERE THE MEDIAN WIDTH IS 6' (2 m) OR LESS USE TWO-WAY MARKERS.

All dimensions are in inches (millimeters) unless otherwise shown.

MODEL: Default
 FILE NAME: \\pwwdot\documents\dot\office\distrefc\1\projects\13620\CADDData\Design\Dis-Sts.dgn

USER NAME = hamwim	DESIGNED -	REVISED - T. RAMMACHER 03-12-99
	DRAWN -	REVISED - T. RAMMACHER 01-06-00
PLOT SCALE = 100,0000' / in.	CHECKED -	REVISED - C. JUCIUS 09-09-09
PLOT DATE = 1/29/2021	DATE -	REVISED - C. JUCIUS 07-01-13

**STATE OF ILLINOIS
 DEPARTMENT OF TRANSPORTATION**

**TYPICAL APPLICATIONS
 RAISED REFLECTIVE PAVEMENT MARKERS (SNOW-PLOW RESISTANT)**

SCALE: NONE SHEET 1 OF 1 SHEETS STA. TO STA.

F.A.P. RTE.	SECTION	COUNTY	TOTAL SHEETS	SHEET NO.
358	2020-136-R5&RW	COOK	23	18
TC-11			CONTRACT NO. 62M14	
ILLINOIS FED. AID PROJECT				

TURN BAY ENTRANCE AT START OF LANE CLOSURE TAPER

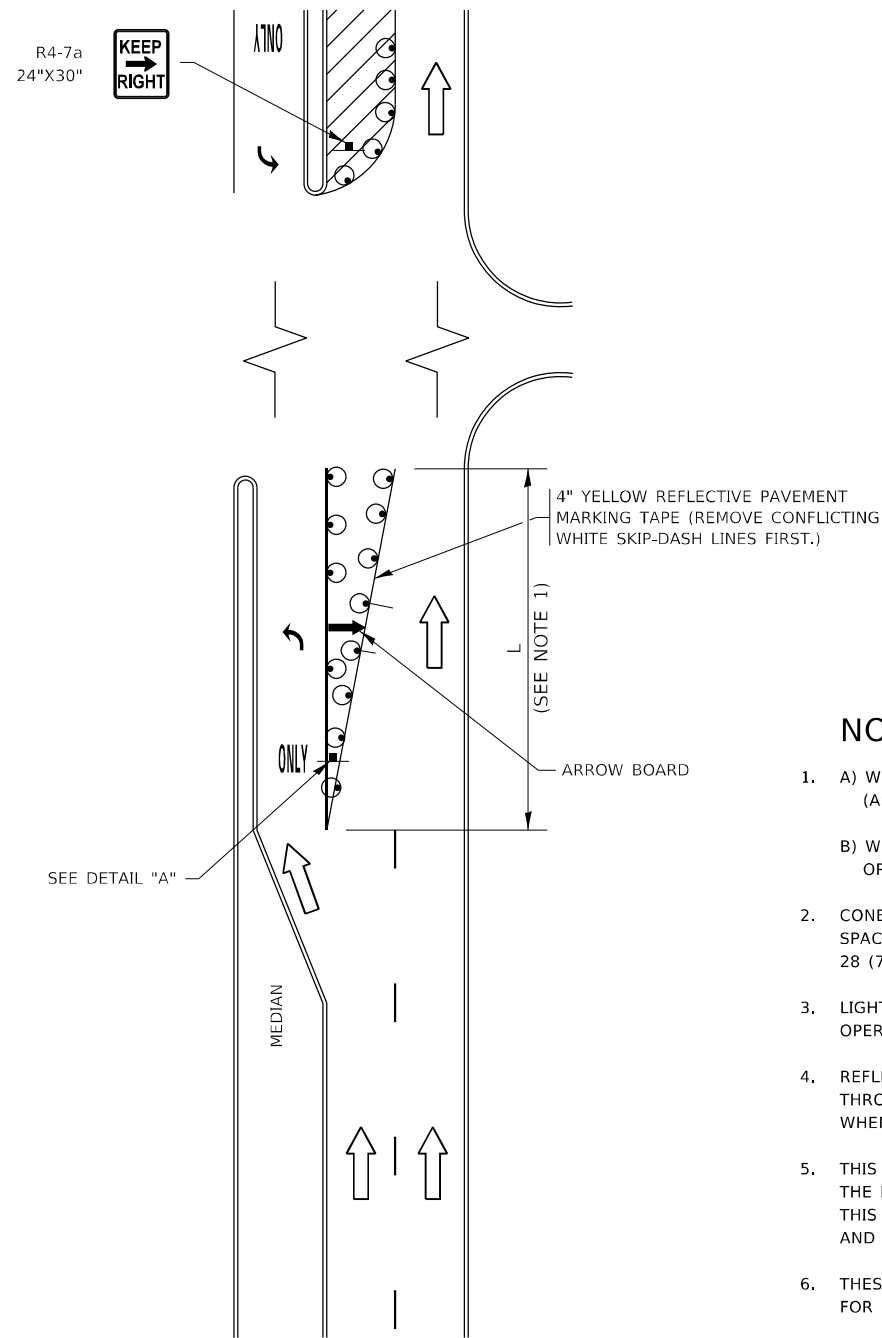


FIGURE 1

TURN BAY ENTRANCE WITHIN A LANE CLOSURE

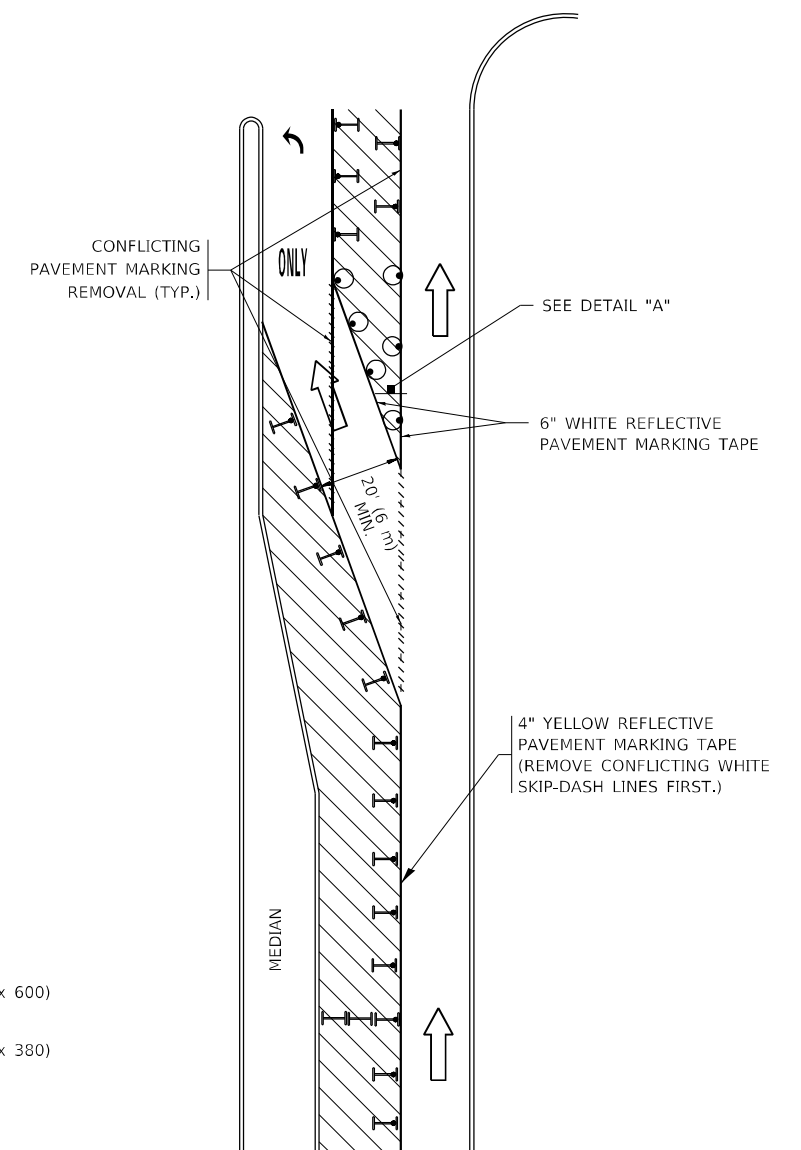
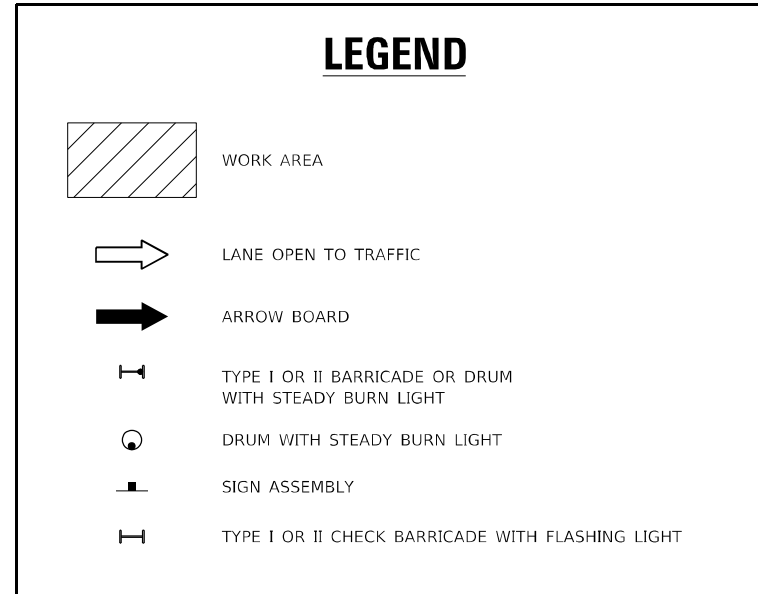
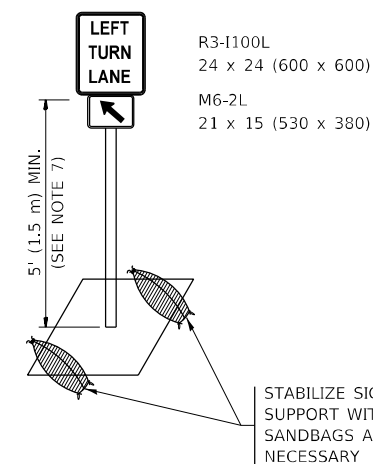


FIGURE 2



NOTES:

1. A) WHEN "L" IS \leq THE STORAGE LENGTH OF THE TURN LANE (AS SHOWN IN FIG. 1), USE FIGURE 1.
B) WHEN "L" IS $>$ THE STORAGE LENGTH OF THE TURN LANE OR THE TURN LANE IS WITHIN THE LANE CLOSURE, USE FIGURE 2.
2. CONES MAY BE SUBSTITUTED FOR BARRICADES OR DRUMS AT HALF THE SPACING DURING DAY OPERATIONS. CONES SHALL BE A MINIMUM OF 28 (710) IN HEIGHT.
3. LIGHTS WILL NOT BE REQUIRED ON BARRICADES OR DRUMS FOR DAY OPERATIONS. ALL LIGHTS SHALL BE MONODIRECTIONAL.
4. REFLECTIVE TEMPORARY PAVEMENT MARKINGS SHALL BE PLACED THROUGHOUT THE BARRICADED AREAS OF EACH TURN BAY AS SHOWN WHERE THE CLOSURE TIME IS GREATER THAN FOURTEEN (14) DAYS.
5. THIS APPLICATION ALSO APPLIES WHEN WORK IS BEING PERFORMED IN THE RIGHT LANE(S) AND THE RIGHT TURN BAY IS TO REMAIN OPEN. UNDER THIS CONDITION, "RIGHT TURN LANE" R3-1100R 24 x 24 (600 x 600) AND M6-2R 21 x 15 (530 x 380) SHALL BE USED.
6. THESE CONTROLS SHALL SUPPLEMENT MAINLINE TRAFFIC CONTROL FOR LANE CLOSURES.
7. THE SIGNS SHALL BE MOUNTED ABOVE THE BARRICADES/DRUMS ON SEPARATE SIGN SUPPORTS THAT MEET NCHRP 350 OR MASH REQUIREMENTS.
8. TRAFFIC CONTROL AND PROTECTION AT TURN BAYS (TO REMAIN OPEN TO TRAFFIC) SHALL BE INCLUDED IN THE COST OF SPECIFIED TRAFFIC CONTROL STANDARDS OR ITEMS.



DETAIL A

All dimensions are in inches (millimeters) unless otherwise shown.

MODEL: Default
FILE NAME: p:\pub\amr\room.dwg
PROJECT: I:\Projects\13620\CADDData\Design\Disc5.dgn

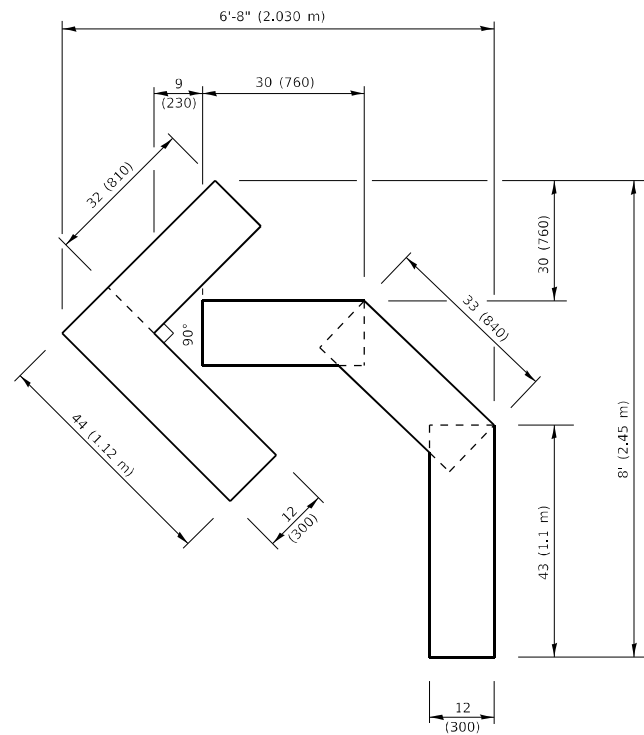
USER NAME = hamwim	DESIGNED - T. RAMMACHER 09-08-94	REVISED - R. BORO 09-14-09
	DRAWN - A. HOUSEH 11-07-95	REVISED - A. SCHUETZE 07-01-13
PLOT SCALE = 100,0000' / in.	CHECKED - A. HOUSEH 10-12-96	REVISED - A. SCHUETZE 09-15-16
PLOT DATE = 1/29/2021	DATE - T. RAMMACHER 01-06-00	REVISED -

**STATE OF ILLINOIS
DEPARTMENT OF TRANSPORTATION**

**TRAFFIC CONTROL AND PROTECTION AT TURN BAYS
(TO REMAIN OPEN TO TRAFFIC)**

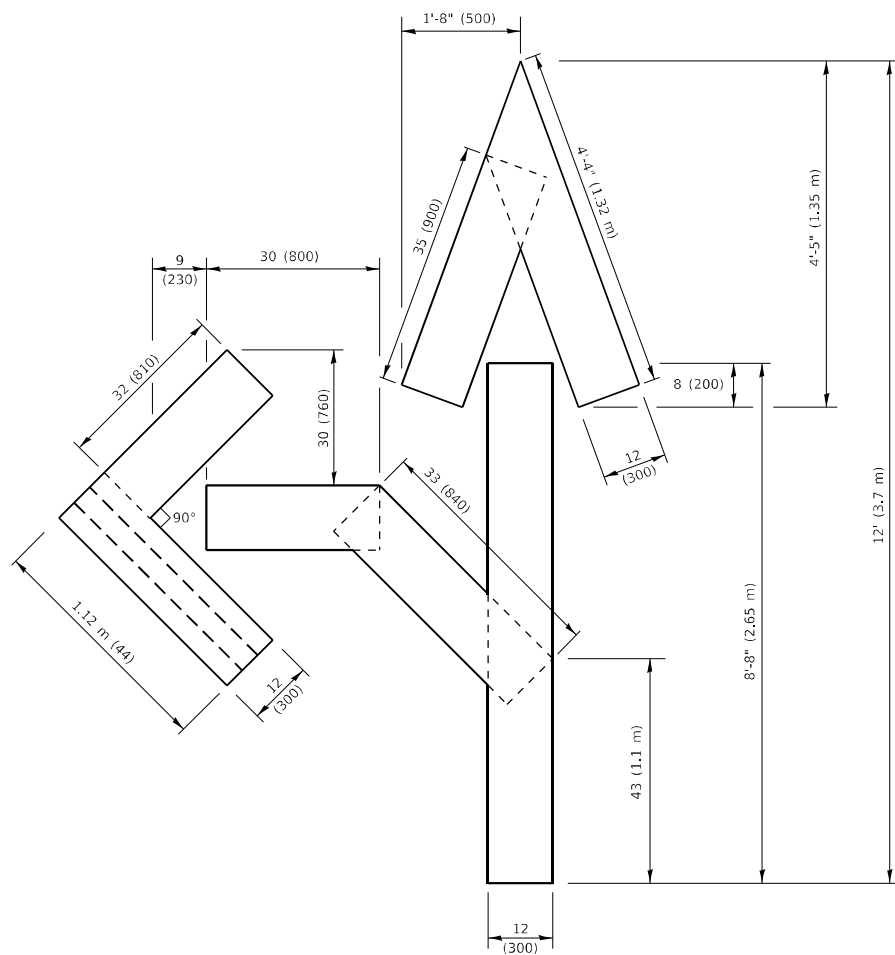
SCALE: NONE SHEET 1 OF 1 SHEETS STA. TO STA.

F.A.P. RTE. 358	SECTION 2020-136-R5&RW	COUNTY COOK	TOTAL SHEETS 23	SHEET NO. 20
TC-14		CONTRACT NO. 62M14		
ILLINOIS FED. AID PROJECT				



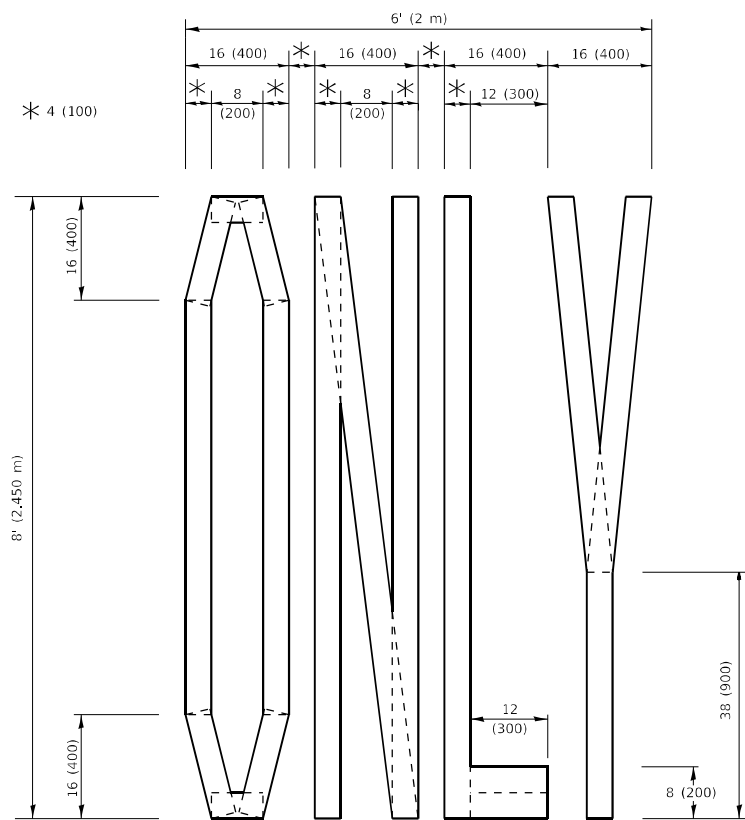
QUANTITY

4 (100) LINE = 45.5 ft. (13.9 m)
15.2 sq. ft. (1.41 sq. m)



QUANTITY

4 (100) LINE = 82.5 ft. (25.1 m)
27.5 sq. ft. (2.53 sq. m)

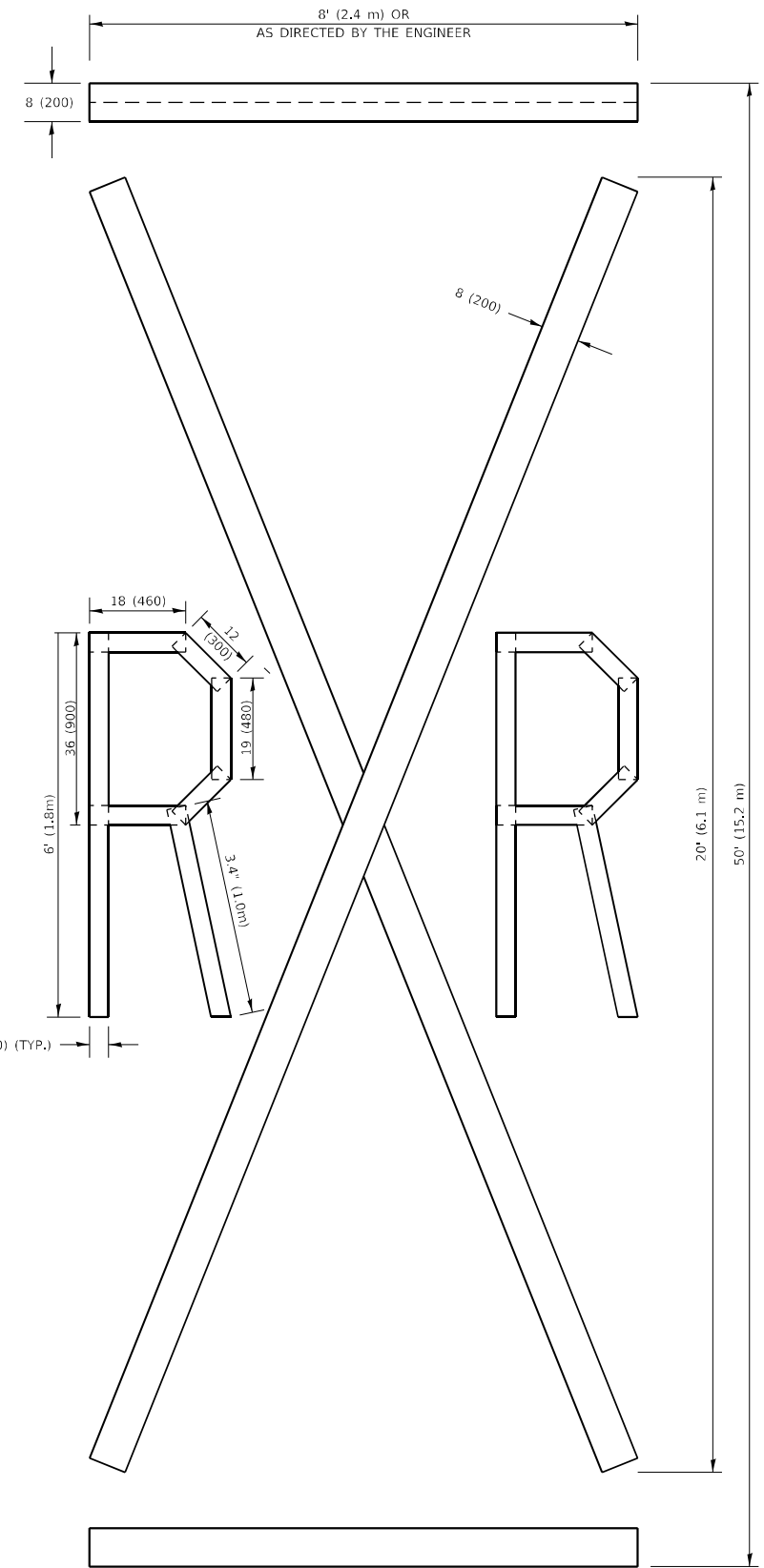


QUANTITY

4 (100) LINE = 64.1 ft. (19.5 m)
21.4 sq. ft. (1.99 sq. m)

NOTE:

ALL QUANTITIES OF PLACEMENT ARE REPRESENTED IN LINEAR FEET OF 4" LINES TO MATCH THE 4" TEMPORARY TAPE PAY ITEM AND REPRESENTS THE TOTAL QUANTITY OF 4" TAPE REQUIRED.



QUANTITY

4 (100) LINE = 225.9 ft. (68.9 m)
75.3 sq. ft. (6.99 sq. m)

All dimensions are in inches (millimeters) unless otherwise shown.

MODEL: Default
FILE NAME: p:\data\mroom.dwg
PROJECT: 133620\CADD\Design\Design\133620.dwg

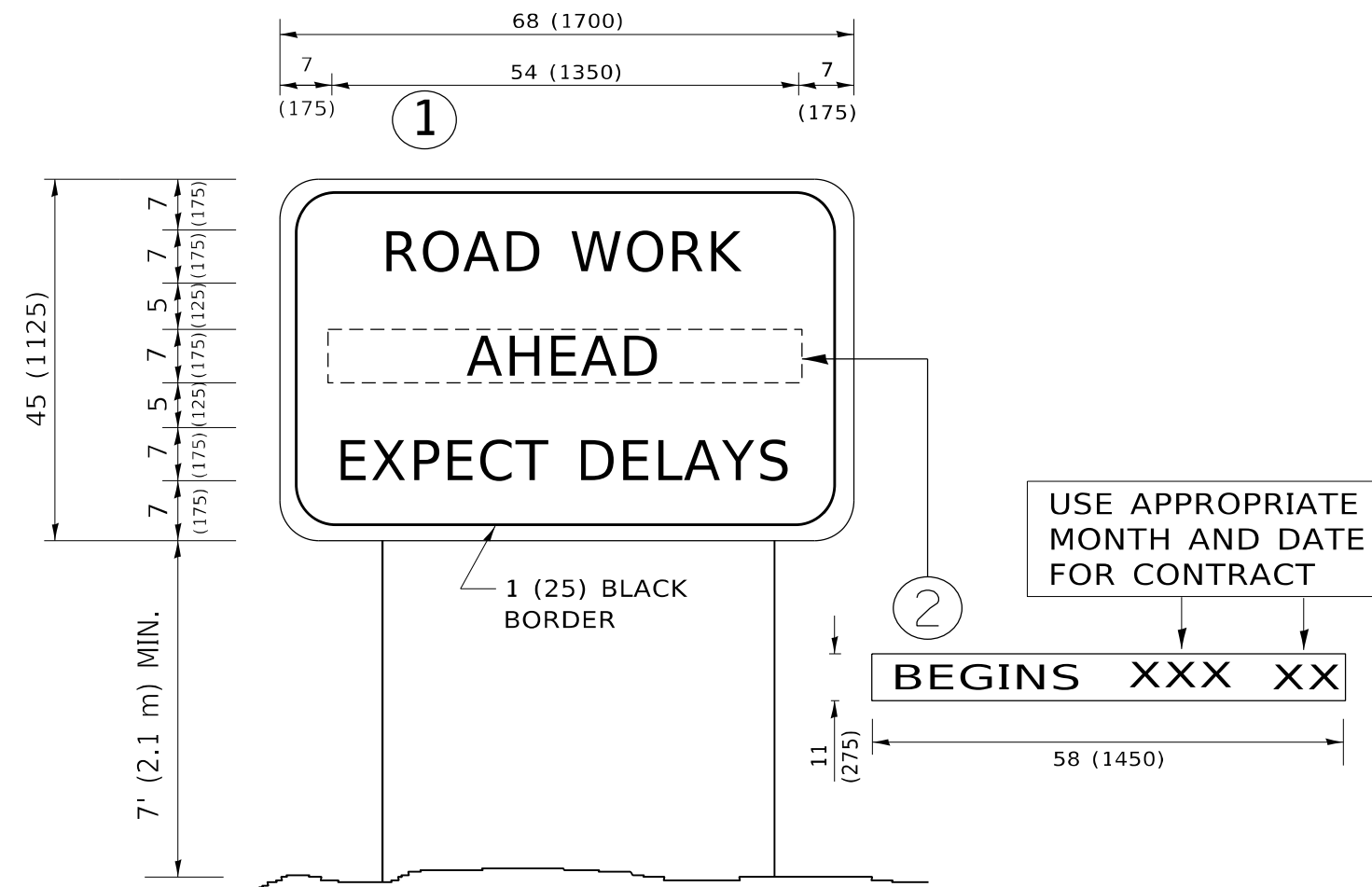
USER NAME = hamwim	DESIGNED -	REVISED - T. RAMMACHER 03-02-98
	DRAWN -	REVISED - E. GOMEZ 08-28-00
PLOT SCALE = 100,0000' / in.	CHECKED -	REVISED - E. GOMEZ 08-28-00
PLOT DATE = 1/29/2021	DATE - 09-18-94	REVISED - A. SCHUETZE 09-15-16

**STATE OF ILLINOIS
DEPARTMENT OF TRANSPORTATION**

SHORT TERM PAVEMENT MARKING LETTERS AND SYMBOLS

SCALE: NONE SHEET 1 OF 1 SHEETS STA. TO STA.

F.A.P. RTE.	SECTION	COUNTY	TOTAL SHEETS	SHEET NO.
358	2020-136-R5&RW	COOK	23	21
TC-16		CONTRACT NO. 62M14		
		ILLINOIS FED. AID PROJECT		



NOTES:

1. USE BLACK LETTERING ON ORANGE BACKGROUND.
2. ERECT SIGNS IN ADVANCE OF THE LOCATION FOR THE "ROAD CONSTRUCTION AHEAD" SIGN AT LOCATIONS AS DIRECTED BY THE ENGINEER.
3. ERECT SIGN ① WITH INSTALLED PANEL ② ONE WEEK PRIOR TO THE START OF CONSTRUCTION.
4. REMOVE PANEL ② SOON AFTER THE START OF CONSTRUCTION.
5. SEE SPECIAL PROVISION FOR "TEMPORARY INFORMATION SIGNING" FOR ADDITIONAL INFORMATION.
6. ONE SIGN ASSEMBLY EQUALS 25.70 SQ. FT. (2.3 SQ. M.)
7. SHALL BE PAID FOR AS TEMPORARY INFORMATION SIGNING.

ALL DIMENSIONS ARE IN INCHES (MILLIMETERS) UNLESS OTHERWISE SHOWN.

MODEL: Default
 FILE NAME: p:\pub\hannanm.dwt\illinois.gov\PWIDOT\Documents\IDOT_Office\Design\1\Project\ID133620\CADD\Data\Design\Dis54.dgn

USER NAME = hamwim	DESIGNED -	REVISED - R. MIRS 09-15-97
PLOT SCALE = 100,0000 ' / in.	DRAWN -	REVISED - R. MIRS 12-11-97
PLOT DATE = 1/29/2021	CHECKED -	REVISED - T. RAMMACHER 02-02-99
	DATE -	REVISED - C. JUCIUS 01-31-07

**STATE OF ILLINOIS
DEPARTMENT OF TRANSPORTATION**

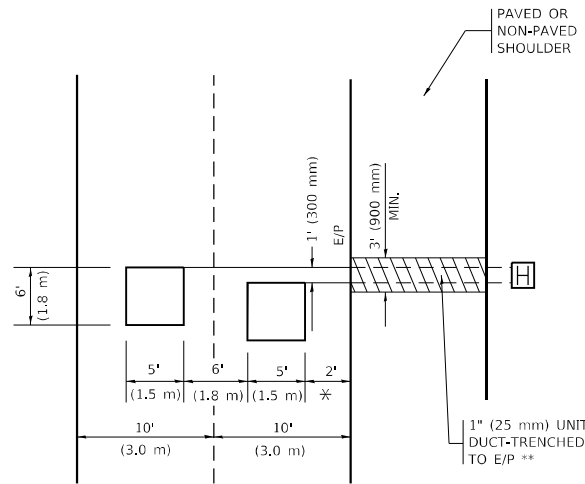
**ARTERIAL ROAD
INFORMATION SIGN**

SCALE: NONE SHEET 1 OF 1 SHEETS STA. TO STA.

F.A.P. RTE.	SECTION	COUNTY	TOTAL SHEETS	SHEET NO.
358	2020-136-R5&RW	COOK	23	22
TC-22		CONTRACT NO. 62M14		
ILLINOIS FED. AID PROJECT				

LOOPS NEXT TO SHOULDERS

PROVIDE A PAVEMENT REPLACEMENT NOTE WHICH SHOULD EQUAL 3' (900 mm) X WIDTH OF PAVED SHOULDER.

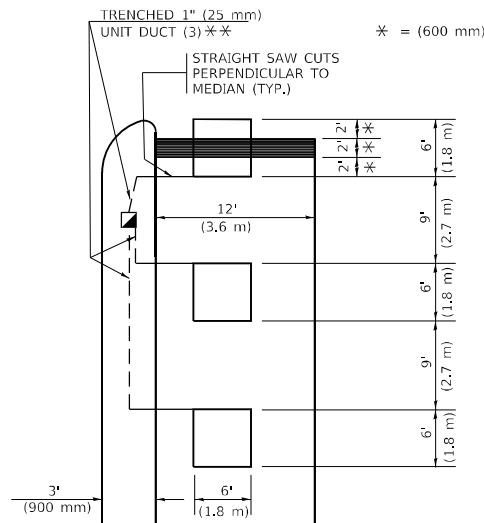


* = (600 mm)

** UNIT DUCT IS TO BE SHOWN ON PLAN SHEETS BUT SHALL NOT BE INCLUDED IN THE PAY ITEMS.

LEFT TURN LANES WITH MEDIANS
VOLUME DENSITY ("FAR OUT" DETECTION)
ON SAME APPROACH
(PROTECTED / PERMITTED LEFT TURN PHASING)

HANDHOLE LOCATION MAY VARY DEPENDING ON GEOMETRICS AND DESIGN OF TRAFFIC SIGNALS. HEAVY-DUTY HANDHOLES TO BE USED WHEN THE MEDIAN IS MOUNTABLE. REFER TO STANDARD 814001 TO ENSURE THAT HANDHOLE FITS IN MEDIAN.

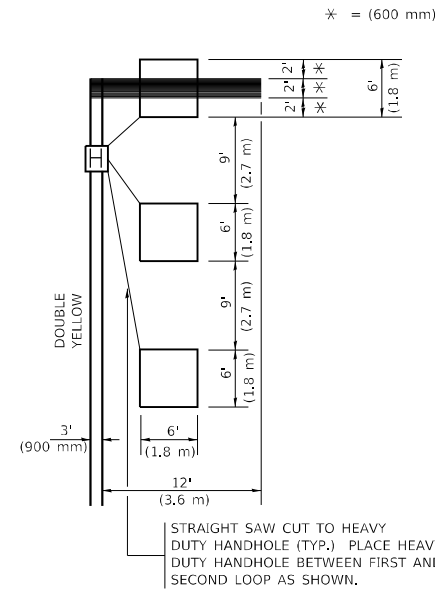


* = (600 mm)

** UNIT DUCT IS TO BE SHOWN ON PLAN SHEETS BUT SHALL NOT BE INCLUDED IN THE PAY ITEMS.

NOTE: DUAL LEFT TURNS NOT SHOWN REFER TO PLAN SHEET FOR DETECTOR LOOP REPLACEMENT

LEFT TURN LANES WITHOUT MEDIANS
VOLUME DENSITY ("FAR OUT" DETECTION)
ON SAME APPROACH
(PROTECTED / PERMITTED LEFT TURN PHASING)



* = (600 mm)

NOTE: DUAL LEFT TURNS NOT SHOWN REFER TO PLAN SHEET FOR DETECTOR LOOP REPLACEMENT

NOTES:

VEHICLES LOOP DETECTORS

- * ALL LEAD IN CABLE SHALL BE TWO CONDUCTOR NO. 14 TWISTED, SHIELDED.
- * EACH DETECTOR LOOP SHALL HAVE ITS OWN SAW CUT FROM THE LOOP TO THE EDGE OF PAVEMENT OR TO A HANDHOLE IN THE PAVEMENT.
- * EACH DETECTOR LOOP SHALL HAVE ITS OWN ONE INCH (25 mm) UNIT DUCT BETWEEN THE EDGE OF PAVEMENT AND THE FIRST HANDHOLE OR JUNCTION BOX. EACH UNIT DUCT RUN SHALL BE SHOWN ON THE PLANS BY THE DESIGNER, BUT SHALL NOT BE PAID FOR SEPARATLY. THIS ITEM IS INCIDENTAL TO THE PAY ITEM FOR DETECTOR LOOPS.
- * ONE DIMENSION OF ALL DETECTOR LOOPS SHALL BE SIX FEET (1.8 m)
- * EACH LANE OF NON-LOCKING, PRESENCE DETECTION AND EACH LANE OF A DOUBLE LEFT TURN LANE REQUIRES A SEPARATE INDUCTIVE LOOP DETECTOR AND LEAD IN CABLE.
- * WHEN NON-LOCKING, PRESENCE DETECTION IS USED, MORE THAN ONE LOOP PER LANE IS REQUIRED BEHIND THE STOP BAR (i.e. 1-1/2, 1-3/4, 2).
- * WHEN SYSTEM LOOPS ARE REQUIRED ON AN APPROACH OF AN INTERSECTION, THE LOOPS USED FOR VOLUME DENSITY AND INTERSECTION TIMING SHALL ALSO BE USED AS SYSTEM DETECTORS. EACH ONE OF THESE TYPE OF LOOPS REQUIRES A SEPARATE TWO CONDUCTOR NO. 14 TWISTED SHIELDED CABLE AND A SEPARATE INDUCTIVE LOOP DETECTOR WHEN NEW CONTROLLERS ARE UTILIZED. THE DESIGNER SHALL LABEL THESE TYPES OF LOOPS AS "INTERSECTION AND SAMPLING (SYSTEM) DETECTORS" ON THE SIGNAL LAYOUT, THE INTERCONNECT PLAN AND THE SYSTEM CABLE PLAN. WHEN AN EXISTING CONTROLLER IS UTILIZED FOR THIS TYPE OF DETECTION, THE PAY ITEM "INDUCTIVE LOOP DETECTOR WITH SYSTEM OUTPUT" SHOULD BE USED.

PLACEMENT OF DETECTORS

THE FOLLOWING FIGURES REPRESENT THE MOST COMMON DETECTOR LOOP LOCATIONS AND SIZES. ADJUSTMENTS WILL BE NECESSARY FOR SPECIFIC GEOMETRIC CONSIDERATIONS.

LOCATIONS AND DEMENSIONS OF DETECTOR LOOPS ARE REQUIRED ON ALL SIGNAL LAYOUT PLAN SHEETS.

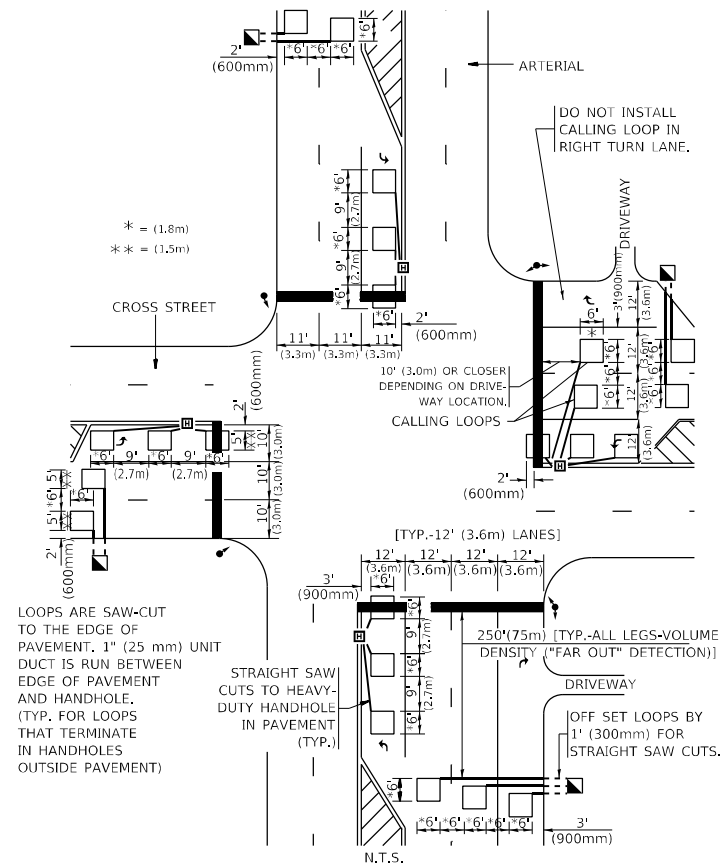
"FAR OUT" DETECTION REFERS TO LOCKING, PRESENCE TYPE DETECTION LOCATED IN THRU LANES, RIGHT TURN LANES, AND RIGHT TURN LANE TAPER AREAS (IF APPLICABLE), USUALLY 250' (75 m) IN ADVANCE OF STOP BARS. "UPTIGHT" DETECTION REFERS TO NON-LOCKING PRESENCE TYPE DETECTION LOCATED IN ALL LANES AND 10'-15' (3.0 m-4.5 m) BEHIND THE CROSSING STREET'S EDGE OF PAVEMENT EXTENDED.

NOTE:

ALL DETAILS AND NOTES SHOWN ARE FROM THE I.D.O.T. DISTRICT 1 TRAFFIC SIGNAL DESIGN GUIDELINES DATED JANUARY 1995

THIS DRAWING HAS BEEN PREPARED TO ASSIST THE RESIDENT ENGINEER FOR ALL ROADWAY RESURFACING OR S.M.A.R.T. PROJECTS WHERE THE DIMENSIONS ARE NOT SHOWN ON THE PLANS AND THE FINAL LOCATIONS FOR CROSSWALKS OR STOP BARS ARE NOT DETERMINED.

ARTERIAL-VOLUME DENSITY ("FAR OUT" DETECTION)
CROSS STREET-NON VOLUME DENSITY ("FAR OUT" DETECTION)



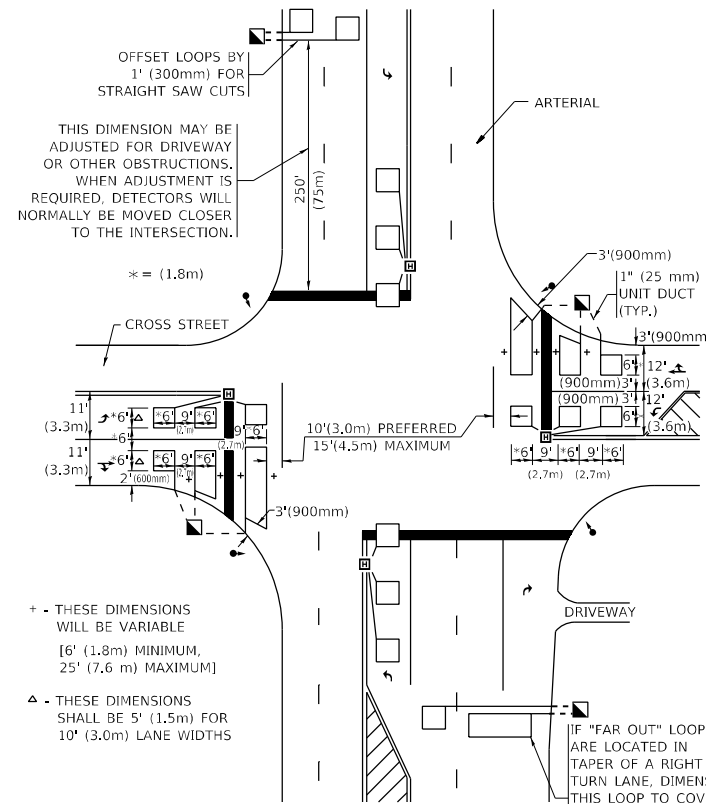
* = (1.8m)
 ** = (1.5m)

LOOPS ARE SAW-CUT TO THE EDGE OF PAVEMENT. 1" (25 mm) UNIT DUCT IS RUN BETWEEN EDGE OF PAVEMENT AND HANDHOLE. (TYP. FOR LOOPS THAT TERMINATE IN HANDHOLES OUTSIDE PAVEMENT)

STRAIGHT SAW CUTS TO HEAVY-DUTY HANDHOLE IN PAVEMENT (TYP.)

DETAIL 1
 N.T.S.

ARTERIAL-VOLUME DENSITY ("FAR OUT" DETECTION)
CROSS STREET-NON VOLUME DENSITY ("UPTIGHT" PRESENCE DETECTION)



OFFSET LOOPS BY 1' (300mm) FOR STRAIGHT SAW CUTS

THIS DIMENSION MAY BE ADJUSTED FOR DRIVEWAY OR OTHER OBSTRUCTIONS. WHEN ADJUSTMENT IS REQUIRED, DETECTORS WILL NORMALLY BE MOVED CLOSER TO THE INTERSECTION.

+ THESE DIMENSIONS WILL BE VARIABLE [6' (1.8m) MINIMUM, 25' (7.6 m) MAXIMUM]

Δ THESE DIMENSIONS SHALL BE 5' (1.5m) FOR 10' (3.0m) LANE WIDTHS

DETAIL 2
 N.T.S.

MODEL: Default
 FILE NAME: p:\pub\aroom\dot\illinois\pwr\pww\DOT\Documents\DOT - Office\Dist1refc - 1\Project\Dist1\31620\CADData\Design\Dist1Refc.dgn

USER NAME = hamwim	DESIGNED -	REVISED -
	DRAWN -	REVISED -
PLOT SCALE = 100,0000' / in.	CHECKED - R.K.F.	REVISED -
PLOT DATE = 1/29/2021	DATE -	REVISED -

STATE OF ILLINOIS
DEPARTMENT OF TRANSPORTATION

DISTRICT 1 - DETECTOR LOOP INSTALLATION		F.A.P. RTE.	SECTION	COUNTY	TOTAL SHEETS	SHEET NO.
DETAILS FOR ROADWAY RESURFACING		358	2020-136-R5&RW	COOK	23	23
SCALE: NONE		SHEET 1 OF 1 SHEETS		STA. TO STA.	CONTRACT NO. 62M14	
		ILLINOIS		FED. AID PROJECT		