

F.A.P. RTE.	SECTION	COUNTY	TOTAL SHEETS	SHEET NO.
373	0707-608 HB-I-4	COOK	40	1
STA.		TO STA.		
FED. ROAD DIST. NO.		ILLINOIS	FED. AID PROJECT	

**CONTRACT NO. 60C94**

**D-91-279-07**



LOCATION OF SECTION INDICATED THIS: - [black rectangle] -

**STATE OF ILLINOIS  
DEPARTMENT OF TRANSPORTATION  
DIVISION OF HIGHWAYS  
PROPOSED  
HIGHWAY PLANS**

**F.A.P. RTE. 373 (IL. RTE. 171)  
SECTION: 0707-608 HB-I-4  
OVER 47TH STREET TO  
55TH STREET BRIDGE COMPLEX AT I-55**

**BRIDGE DECK REPAIRS  
COOK COUNTY  
C-91-279-07  
LYONS TOWNSHIP  
R 12 E**

FOR INDEX OF SHEETS, SEE SHEET NO. 2

FUNCTIONAL CLASSIFICATION: OTHER PRINCIPAL ARTERIAL  
ADT: 16,000 (2005), 29,295 (2021)  
DESIGN SPEED LIMIT: 50 MPH  
POSTED SPEED LIMIT: 50 MPH

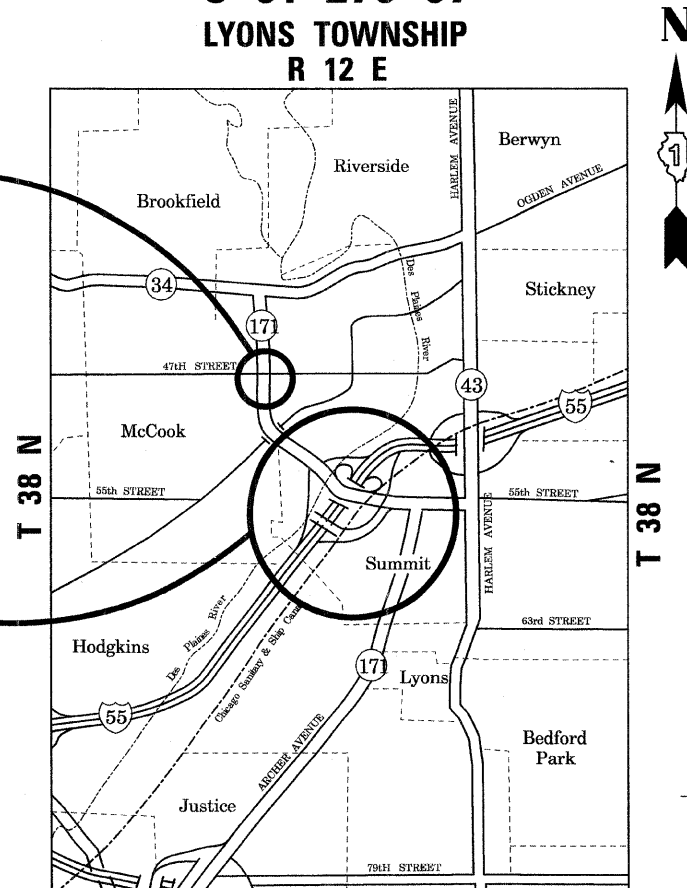
**SCOPE OF WORK**

WITHIN THE PROJECT LIMITS TWELVE (12) BRIDGE STRUCTURES WILL HAVE INTERIM REPAIRS TO THE BRIDGE DECKS.

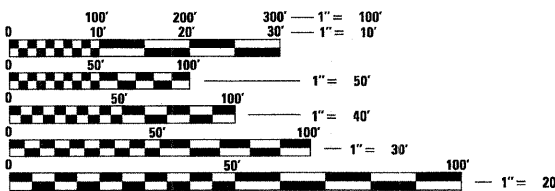
IMPROVEMENTS LOCATED IN THE VILLAGE OF SUMMIT,  
COOK COUNTY

**LOCATION OF WORK  
IL. RTE. 171 OVER W. 47TH ST.  
S.N. 016-1000  
S.N. 016-1001**

**LOCATION OF WORK  
IL. RTE. 171 AT I-55 INTERCHANGE  
S.N. 016-0485, S.N. 016-0486, S.N. 016-0487,  
S.N. 016-0488, S.N. 016-0489, S.N. 016-1026,  
S.N. 016-2454, S.N. 016-2455, S.N. 016-2456 &  
S.N. 016-2457**



**R 12 E  
LOCATION MAP  
NOT TO SCALE**



FULL SIZE PLANS HAVE BEEN PREPARED USING STANDARD ENGINEERING SCALES. REDUCED SIZED PLANS WILL NOT CONFORM TO STANDARD SCALES. IN MAKING MEASUREMENTS ON REDUCED PLANS, THE ABOVE SCALES MAY BE USED.

J.U.L.I.E.  
JOINT UTILITY LOCATION INFORMATION FOR EXCAVATION  
1-800-892-0123 OR 811



*Bhadresh N. Shah 11/21/08*  
BHADRESH N. SHAH  
LICENSED STRUCTURAL ENGINEER  
STATE OF ILLINOIS LIC. No. 081-004476  
EXPIRES: 11-30-10



CHRISTIAN-ROGE & ASSOCIATES, INC.  
ENGINEERS / PLANNERS / SURVEYORS  
211 W. WACKER DRIVE CHICAGO, IL. 60606  
TELEPHONE: 312-372-2023

STATE OF ILLINOIS  
DEPARTMENT OF TRANSPORTATION  
DIVISION OF HIGHWAYS

SUBMITTED DECEMBER 3, 20 08

*Diana M. O'Keefe*  
DEPUTY DIRECTOR OF HIGHWAYS, REGION ONE ENGINEER

January 30, 20 09  
*Charles G. Ingersoll*  
ENGINEER OF DESIGN AND ENVIRONMENT

January 30, 20 09  
*Christine M. Reed*  
DIRECTOR OF HIGHWAYS, CHIEF ENGINEER

**PRINTED BY THE AUTHORITY  
OF THE STATE OF ILLINOIS**

DISTRICT ONE - DESIGN PROJECT MANAGER: ISAAC KWARTENG (847) 705-4230

**CONTRACT NO. 60C94**

GROSS & NET LENGTH = 5,630 FT. = 1.066 MILES