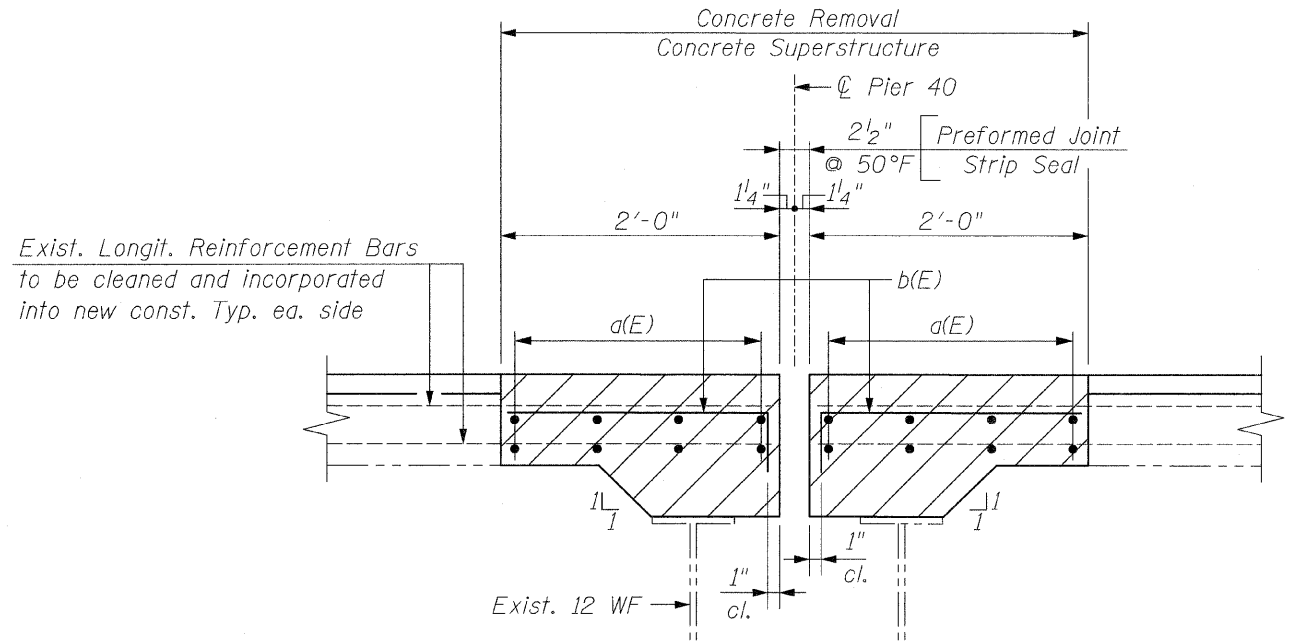


F.A.P. RTE.	SECTION	COUNTY	TOTAL SHEETS	SHEET NO.
373	0707-608 HB-1-4	COOK	40	36
STA.		TO STA.		
FED. ROAD DIST. NO.		ILLINOIS	FED. AID PROJECT	

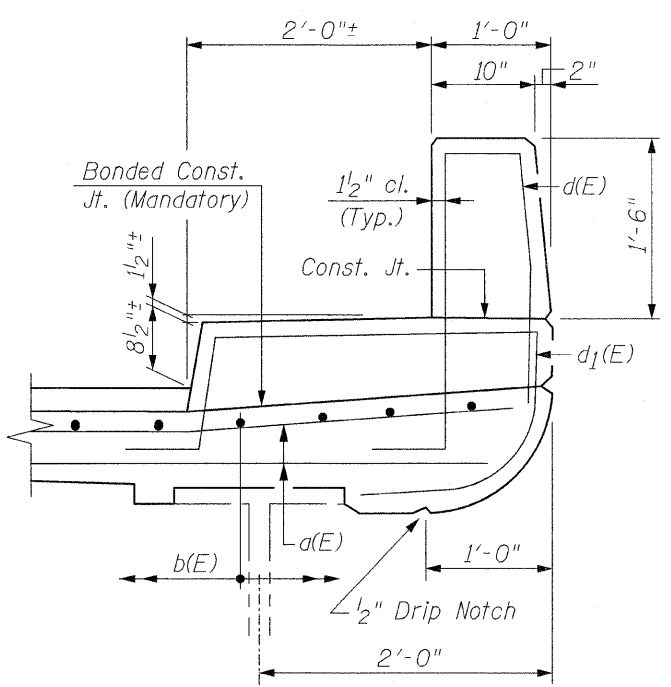
**CONTRACT NO. 60C94**

**BILL OF MATERIAL**

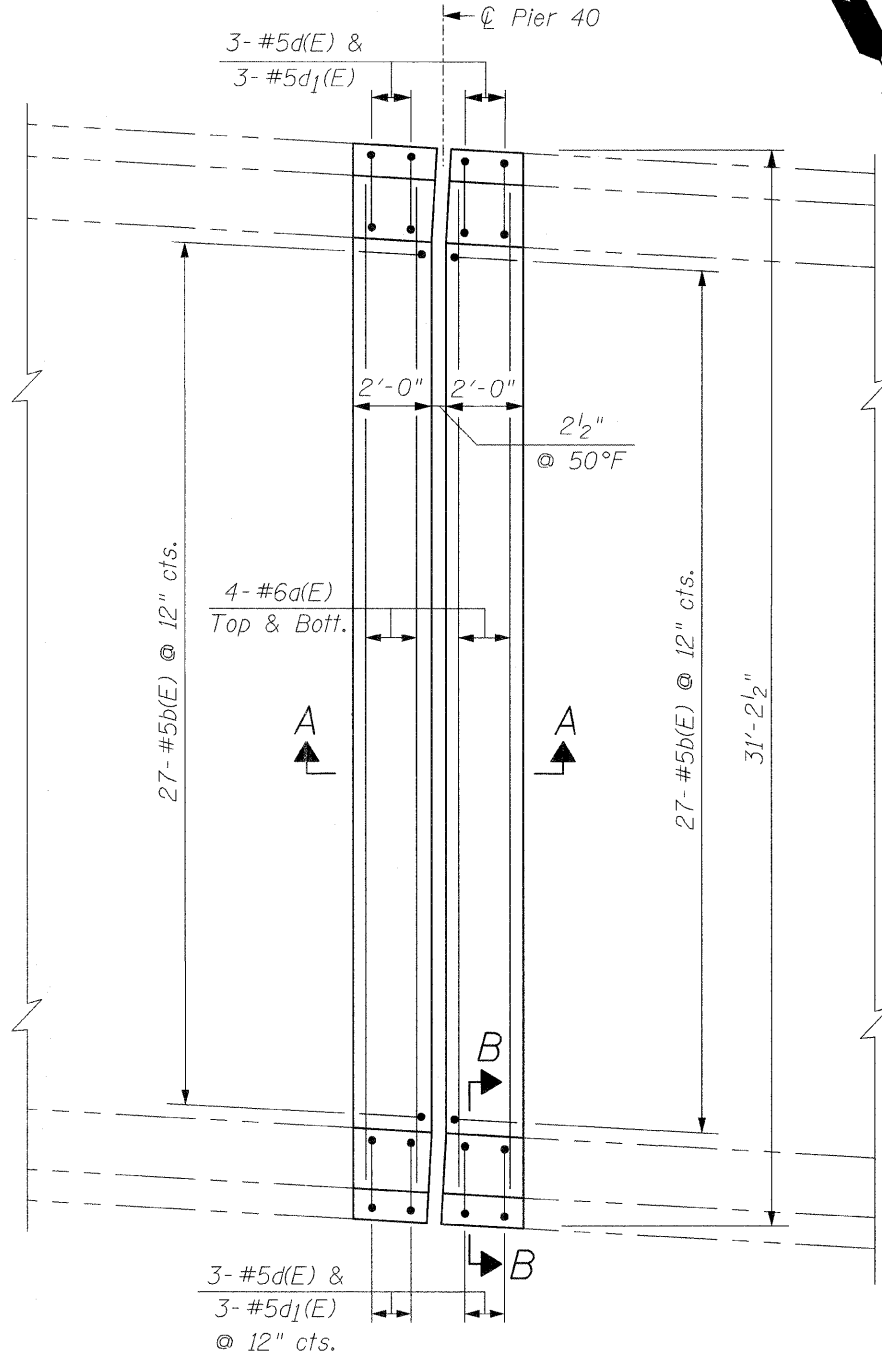
Bar	No.	Size	Length	Shape	
a(E)	16	#6	29'-3"	—	
b(E)	52	#5	2'-4"	└	
d(E)	12	#5	6'-0"	└	
d1(E)	12	#5	6'-8"	└	
Reinforcement Bars, Epoxy Coated				Pound	990
Concrete Removal				Cu. Yd.	4.5
Concrete Superstructure				Cu. Yd.	4.5
Preformed Joint Strip Seal				Foot	32



**SECTION A-A**  
(Dimensions are at Rt. L's)

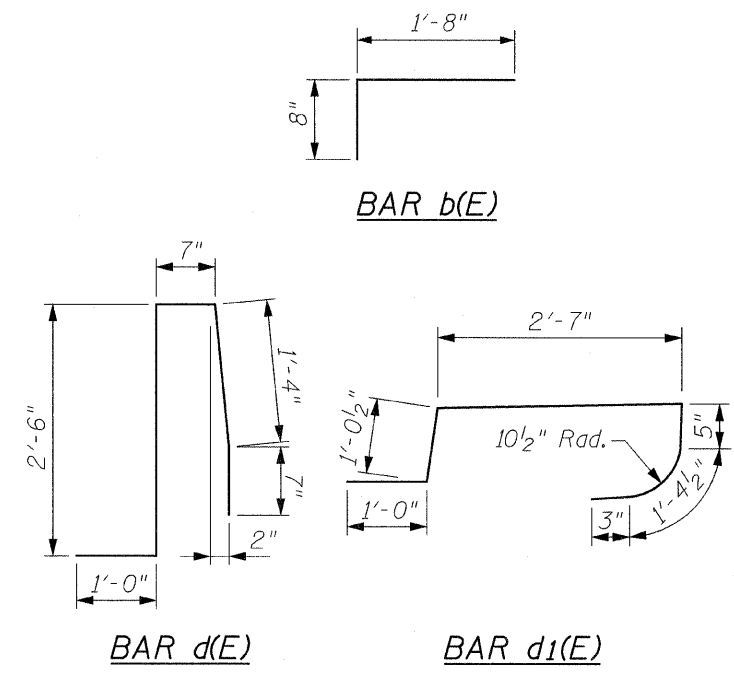


**SECTION B-B**  
(Dimensions are at Rt. L's)



**PROPOSED PARTIAL PLAN**  
Joint Reconstruction @ Q Pier 40

**NOTE:**  
Remove Neoprene Exp. Joint (2 1/2")  
& Replace with Preformed Joint Strip Seal @ Pier 40.



The Contractor must use extreme caution during concrete removal and must not nick, cut or damage in any way, any of the steel beams. The existing Reinforcement Bars extending into the removal area shall be cleaned, straightened and incorporated into the new construction. Any Reinforcement Bars that are damaged during concrete removal shall be replaced with an approved Bar Splicer or Anchorage System. Cost is included with Concrete Removal.

Reinforcement Bars shall conform to the requirements of ASTM A-706, Gr. 60, See Special Provisions. Reinforcement Bars designated (E) shall be Epoxy Coated.

Cost for removal of existing Neoprene Exp. Joint & Preformed Joint Seal is included in the cost of Concrete Removal.

REVISIONS	
NAME	DATE

ILLINOIS DEPARTMENT OF TRANSPORTATION  
EXPANSION JOINT DETAILS  
IL. RTE. 171  
OVER  
CHICAGO SANITARY AND SHIP CANAL  
F.A.P. RTE. 373 SECTION: 0707-608 HB-1-4  
COOK COUNTY STATION 58+29.83  
S.N. 016-2457

SCALE: NONE  
DATE: DECEMBER 8, 2008  
DRAWN BY: D.L./F.M.  
CHECKED BY: B.N.S./J.C.N.

**CHRISTIAN-ROGE & ASSOC., INC.**  
CHICAGO ILLINOIS