

F.A.I. RTE.	SECTION	COUNTY	TOTAL SHEETS	SHEET NO.
55	2008-028 BR	WILL	29	1
FED. ROAD DIST. NO. 1		ILLINOIS	CONTRACT NO. 60E59	

**STATE OF ILLINOIS
DEPARTMENT OF TRANSPORTATION
DIVISION OF HIGHWAYS**

**PROPOSED
HIGHWAY PLANS**

**ROUTE: F.A.I. RTE. 55 / I-55
SECTION: 2008-028 BR
1) OVER JOLIET ROAD
2) OVER IL. RTE. 53
BRIDGE DECK REPAIRS
COUNTY: WILL
C-91-493-08**

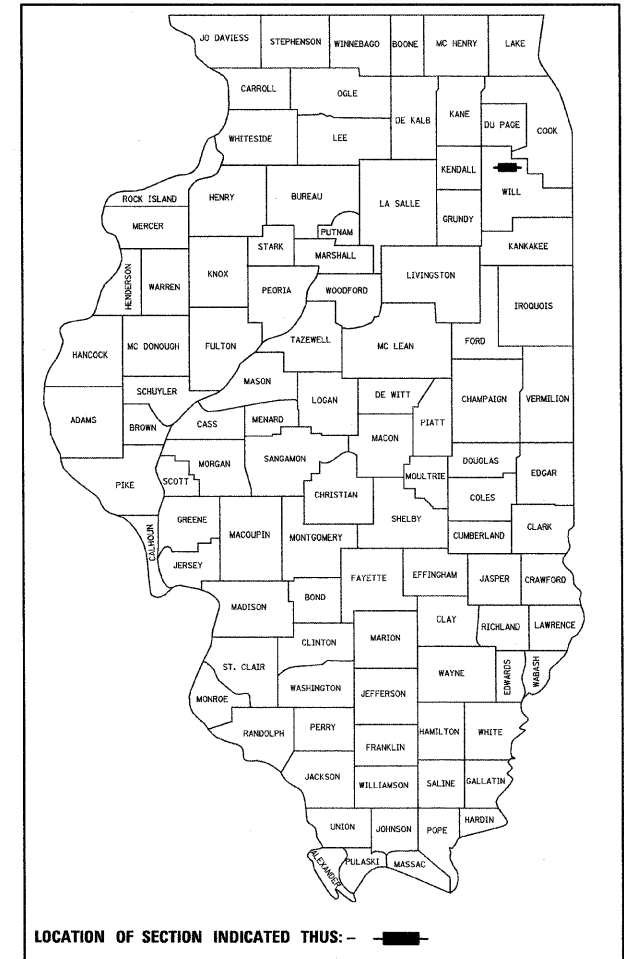
PLAINFIELD TOWNSHIP
R. 10 E.

FOR INDEX OF SHEETS, SEE SHEET NO. 2

1) **DESIGN DESIGNATION I-55 INTERSTATE:**
DESIGN SPEED : 55 M.P.H.
2007 ADT = 136,300

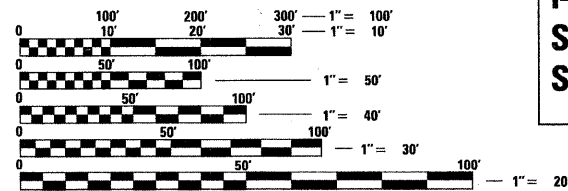
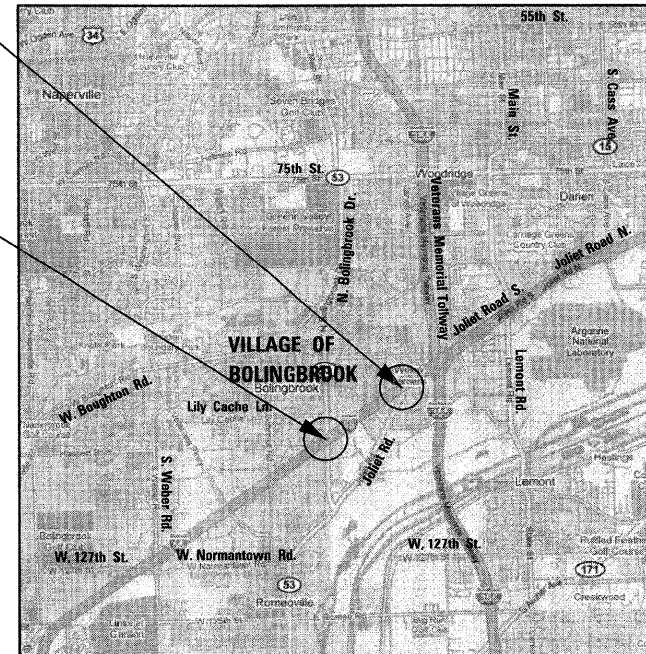
MUNICIPALITY INVOLVED:
VILLAGE OF BOLINGBROOK

D-91-493-08



**1) LOCATION:
I-55 OVER JOLIET ROAD
S.N. 099-0028**

**2) LOCATION:
I-55 OVER IL. RTE. 53
S.N. 099-0260
S.N. 099-0261**



FULL SIZE PLANS HAVE BEEN PREPARED USING STANDARD ENGINEERING SCALES. REDUCED SIZED PLANS WILL NOT CONFORM TO STANDARD SCALES. IN MAKING MEASUREMENTS ON REDUCED PLANS, THE ABOVE SCALES MAY BE USED.

J.U.L.I.E.
JOINT UTILITY LOCATING INFORMATION FOR EXCAVATORS
1-800-892-0123 OR 811

1) GROSS & NET LENGTH OF IMPROVEMENT (AT JOLIET ROAD) = 210.66 FEET = 0.040 MILES
2) GROSS & NET LENGTH OF IMPROVEMENT (AT IL. RTE. 53) = 242.00 FEET = 0.046 MILES

DISTRICT ONE - DESIGN PROJECT MANAGER: KEN ENG (847) 705-4247

CONTRACT NO. 60E59

STATE OF ILLINOIS
DEPARTMENT OF TRANSPORTATION
DIVISION OF HIGHWAYS

SUBMITTED NOVEMBER 26, 20 08

Diana M. O'Keefe DEPUTY DIRECTOR OF HIGHWAYS, REGION ONE ENGINEER
January 30, 20 09

Charles G. Ingersoll ENGINEER OF DESIGN AND ENVIRONMENT
January 30, 20 09

Christine M. Reed DIRECTOR OF HIGHWAYS, CHIEF ENGINEER



Bhadresh N. Shah
BHADRESH N. SHAH, S.E., P.E.
EXPIRES: 11-30-2010

11-21-2008
DATE



CHRISTIAN-ROGE & ASSOCIATES, INC.
ENGINEERS / PLANNERS / SURVEYORS
211 W. WACKER DRIVE CHICAGO, IL. 60606
TELEPHONE: 312-377-2023

**PRINTED BY THE AUTHORITY
OF THE STATE OF ILLINOIS**