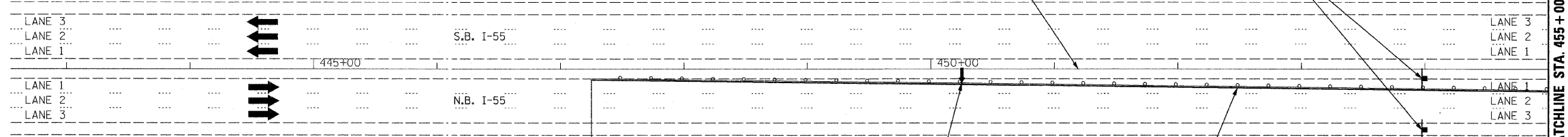


WORK ZONE	W2-I115(0)-3618
SPEED LIMIT	R2-1-3648
BEGINS	W21-I113(0)-3612
XXX FINE MINIMUM	R2-I106-3618



TRAFFIC CONTROL AND STAGING LEGEND

- WORK ZONE
- DIRECTION OF TRAFFIC
- BARRICADES OR DRUMS PER STANDARD OR DETAIL REFERENCED

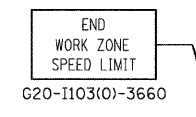
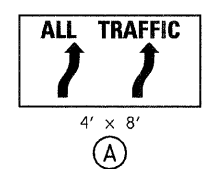
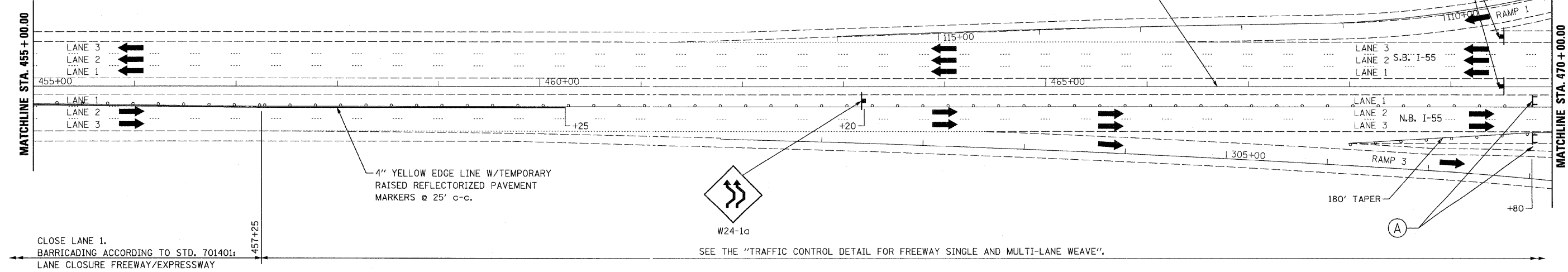
NOTES

1. SEE STD.S 701400, 701401 AND THE DETAIL FOR "FREEWAY MULTI-LANE WEAVE" FOR ALL NOTES, DETAILS, AND FOR THE TYPE AND SPACING OF BARRICADE PLACEMENT.

SIGNING ACCORDING TO STD. 701400 APPROACH TO LANE CLOSURE, FREEWAY/EXPRESSWAY

CLOSE LANE 1. BARRICADING ACCORDING TO STD. 701401: LANE CLOSURE FREEWAY/EXPRESSWAY

4" YELLOW EDGE LINE W/TEMPORARY RAISED REFLECTORIZED PAVEMENT MARKERS @ 25' C-C.



CLOSE LANE 1. BARRICADING ACCORDING TO STD. 701401: LANE CLOSURE FREEWAY/EXPRESSWAY

SEE THE "TRAFFIC CONTROL DETAIL FOR FREEWAY SINGLE AND MULTI-LANE WEAVE".

FILE NAME = D162E59_sht_staging_53 ST
PLOT DATE = 12/31/2008

CHRISTIAN-ROGE & ASSOCIATES, INC.
ENGINEERS-PLANNERS-SURVEYORS
211 WEST WACKER DRIVE
CHICAGO, ILLINOIS 60606
PHONE: (312)372-2023 FAX: (312)372-5274

DESIGNED	- S.J.P.	REVISED	-
DRAWN	- A.Y.	REVISED	-
CHECKED	- E.J.M.	REVISED	-
DATE	- DECEMBER 30, 2008	REVISED	-

**STATE OF ILLINOIS
DEPARTMENT OF TRANSPORTATION**

**SUGGESTED TRAFFIC CONTROL - STAGE I
I-55 OVER IL. RTE. 53**

SCALE: 1" = 50' SHEET NO. 1 OF 3 SHEETS STA. 445+00 TO STA. 470+00

F.A.I. RTE.	SECTION	COUNTY	TOTAL SHEETS	SHEET NO.
55	2008-028 BR	WILL	29	5
FED. ROAD DIST. NO. 1 ILLINOIS FED. AID PROJECT				CONTRACT NO. 60E59