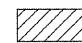

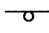
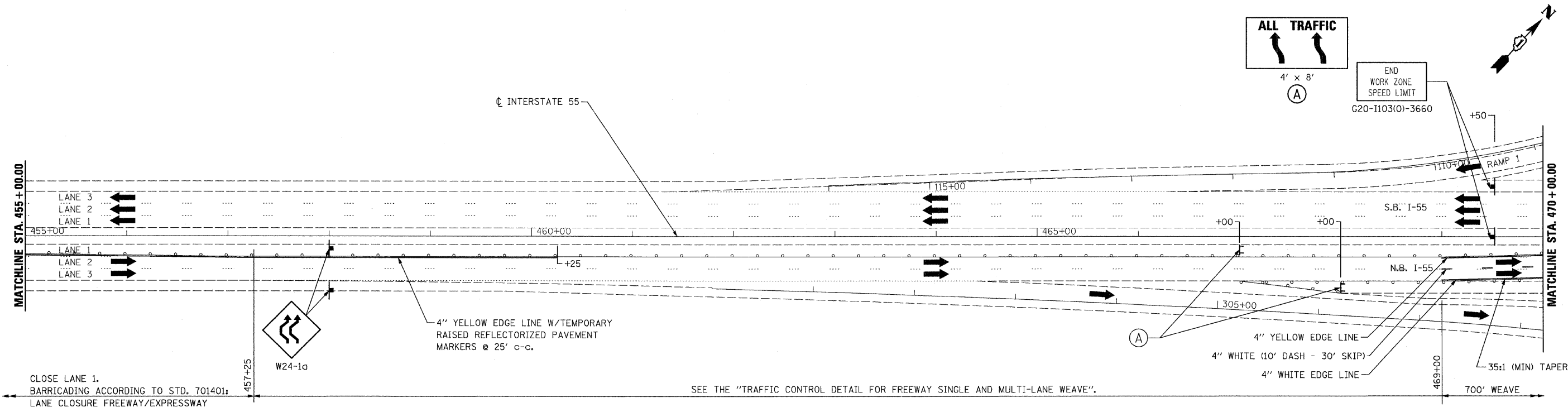
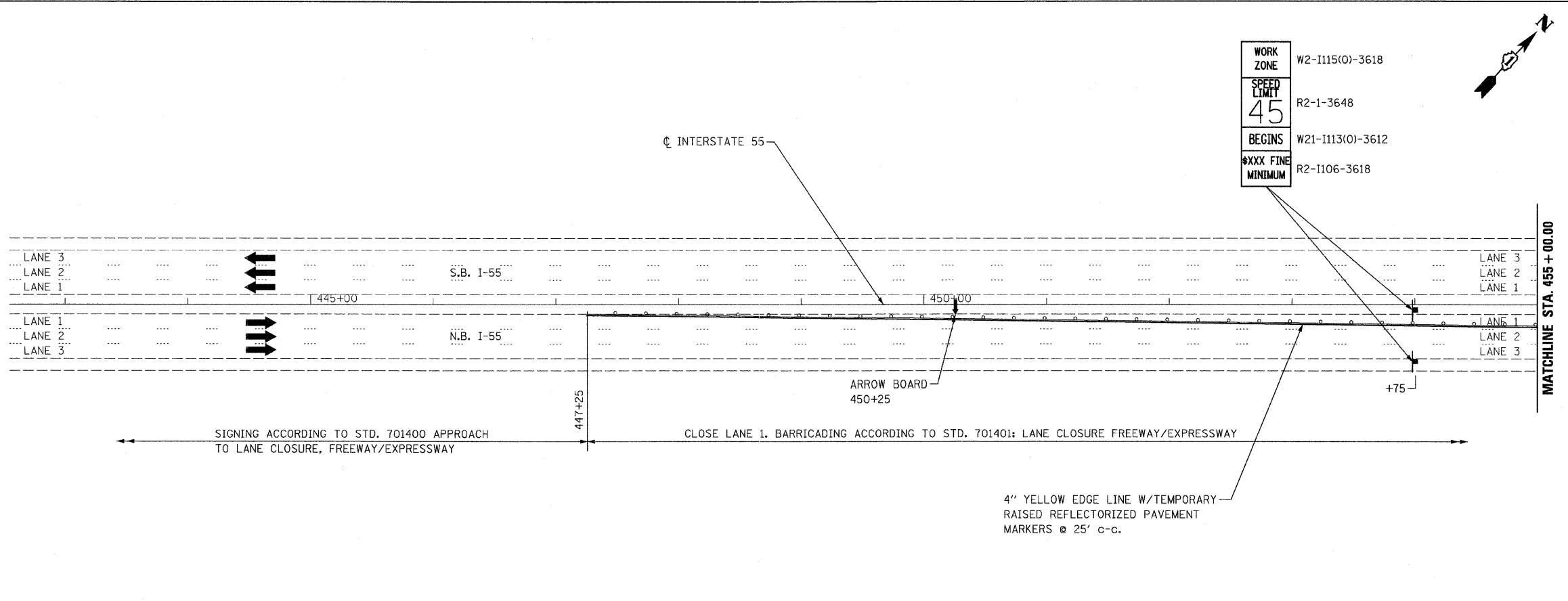



TRAFFIC CONTROL AND STAGING LEGEND

-  WORK ZONE
-  DIRECTION OF TRAFFIC
-  BARRICADES OR DRUMS PER STANDARD OR DETAIL REFERENCED

NOTES

1. SEE STD.S 701400, 701401 AND THE DETAIL FOR "FREEWAY MULTI-LANE WEAVE" FOR ALL NOTES, DETAILS, AND FOR THE TYPE AND SPACING OF BARRICADE PLACEMENT.



FILE NAME = D168E59_sht_staging_53 PLOT DATE = 12/31/2008	 CHRISTIAN-ROGE & ASSOCIATES, INC. ENGINEERS-PLANNERS-SURVEYORS 211 WEST WACKER DRIVE CHICAGO, ILLINOIS 60606 PHONE: (312)372-2023 FAX: (312)372-5274	DESIGNED - S.J.P.	REVISED -	STATE OF ILLINOIS DEPARTMENT OF TRANSPORTATION	SUGGESTED TRAFFIC CONTROL - STAGE II I-55 OVER IL. RTE. 53	F.A.I. RTE. 55	SECTION 2008-028 BR	COUNTY WILL	TOTAL SHEETS 29	SHEET NO. 8
		DRAWN - A.Y.	REVISED -			SCALE: 1" = 50' SHEET NO. 1 OF 3 SHEETS STA. 445+00 TO STA. 470+00			CONTRACT NO. 60E59	
		CHECKED - E.J.M.	REVISED -			FED. ROAD DIST. NO. 1 [ILLINOIS] FED. AID PROJECT				
		DATE - DECEMBER 30, 2008	REVISED -							