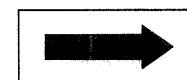




(A)



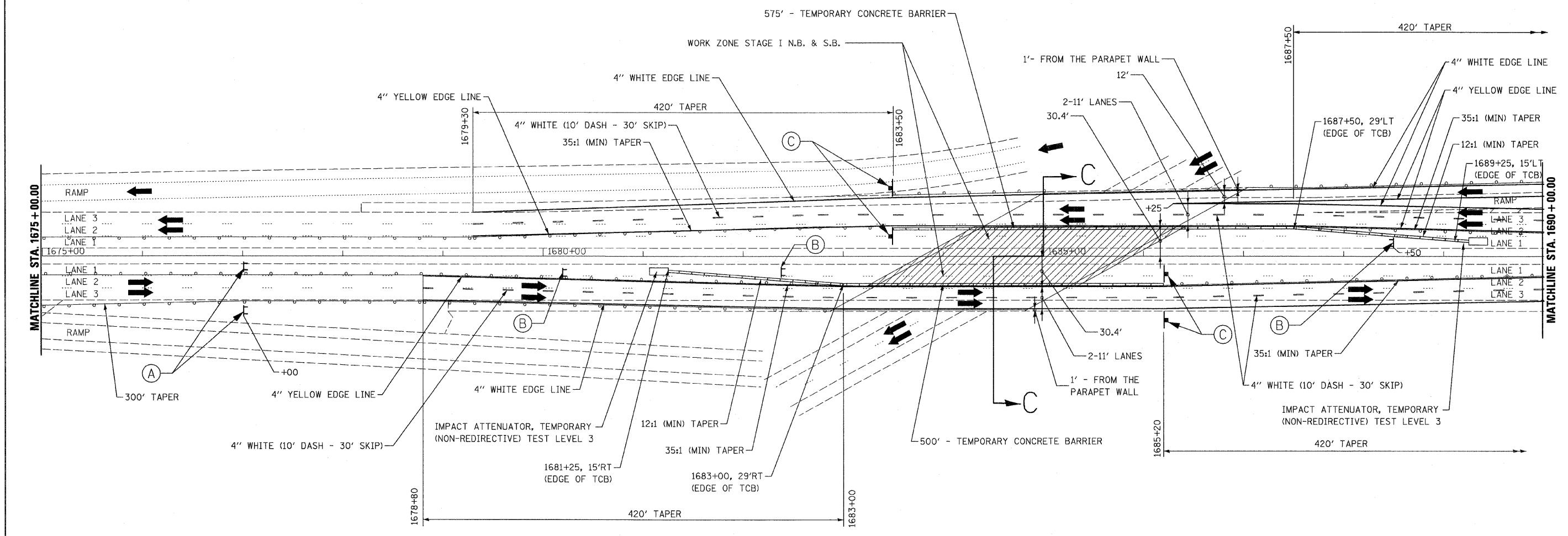
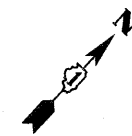
W1-6R0-6030

(B)



W1-4b

(C)



**TRAFFIC CONTROL AND STAGING LEGEND**

- WORK ZONE
- DIRECTION OF TRAFFIC
- BARRICADES OR DRUMS PER STANDARD OR DETAIL REFERENCED

**NOTES**

1. SEE STD.S 701400, 701401 AND THE DETAIL "MULTI-LANE WEAVE" FOR ALL NOTES, DETAILS, AND FOR THE TYPE OF BARRICADE PLACEMENT.
2. FOR SECTION C-C, SEE SHEET NUMBER 25.

FILE NAME = D168E59_sht_staging.Jo PLOT DATE = 12/31/2008	<b>CHRISTIAN-ROGE &amp; ASSOCIATES, INC.</b> ENGINEERS-PLANNERS-SURVEYORS 211 WEST WACKER DRIVE CHICAGO, ILLINOIS 60606 PHONE: (312)372-2023 FAX: (312)372-5274	DESIGNED - S.J.P.	REVISED -	<b>STATE OF ILLINOIS</b> <b>DEPARTMENT OF TRANSPORTATION</b>	<b>SUGGESTED TRAFFIC CONTROL - STAGE I</b> <b>I-55 OVER JOLIET ROAD</b>		F.A.I. RTE.	SECTION	COUNTY	TOTAL SHEETS	SHEET NO.
		DRAWN - A.Y.	REVISED -		55	2008-028 BR	WILL	29	12		
		CHECKED - E.J.M.	REVISED -		SCALE: 1" = 50'	SHEET NO. 2 OF 3 SHEETS	STA. 1675+00	TO STA. 1690+00	CONTRACT NO. 60E59		
		DATE - DECEMBER 30, 2008	REVISED -		FED. ROAD DIST. NO. 1 ILLINOIS FED. AID PROJECT						