

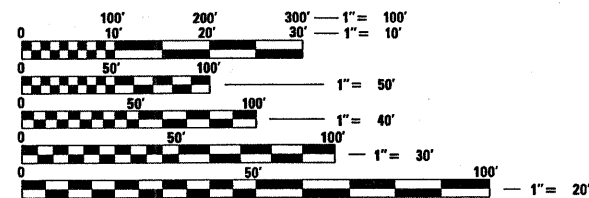
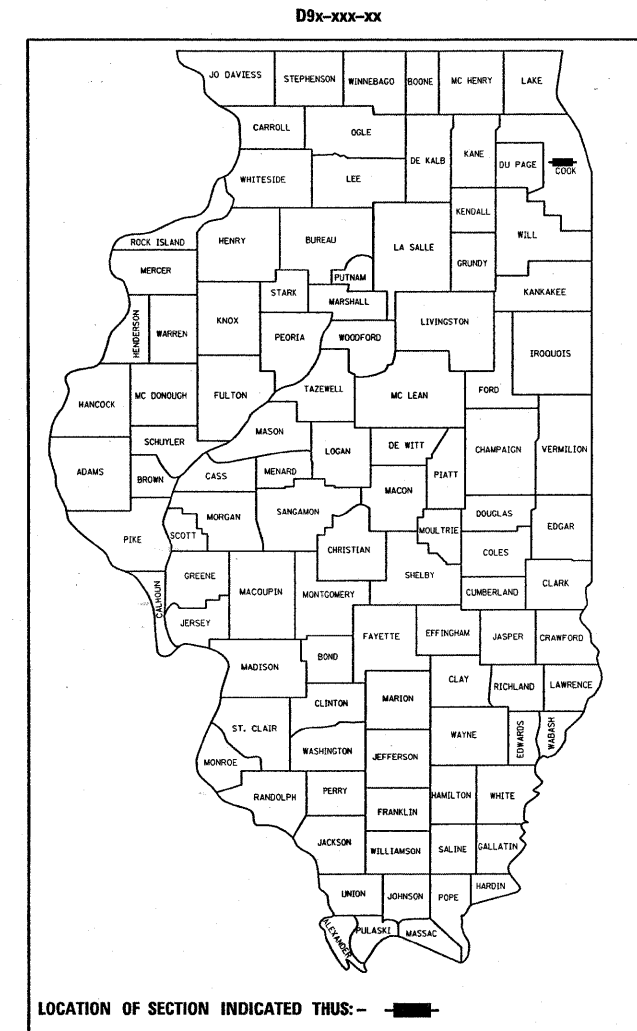
F.A.I. RTE.	SECTION	COUNTY	TOTAL SHEETS	SHEET NO.
290	2008-055 I	COOK	33	1
FED. ROAD DIST. NO. 1	ILLINOIS	CONTRACT NO. 60F10		

STATE OF ILLINOIS
DEPARTMENT OF TRANSPORTATION
DIVISION OF HIGHWAYS

**PROPOSED
HIGHWAY PLANS**
FAI ROUTE: 290/290 (EASTBOUND)
25TH AVENUE TO I-90/94
SECTION: 2008-055 I
SEAL COAT (INSIDE & OUTSIDE SHOULDERS)
COOK COUNTY
C-91-031-09

FOR INDEX OF SHEETS, SEE SHEET NO. 2

IMPROVEMENT IS LOCATED IN THE VILLAGES
OF BELLWOOD, BROADVIEW, MAYWOOD, FOREST PARK,
OAK PARK, AND THE CITY OF CHICAGO



FULL SIZE PLANS HAVE BEEN PREPARED USING STANDARD
ENGINEERING SCALES. REDUCED SIZED PLANS WILL NOT
CONFORM TO STANDARD SCALES. IN MAKING MEASUREMENTS
ON REDUCED PLANS, THE ABOVE SCALES MAY BE USED.

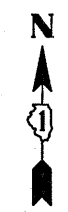
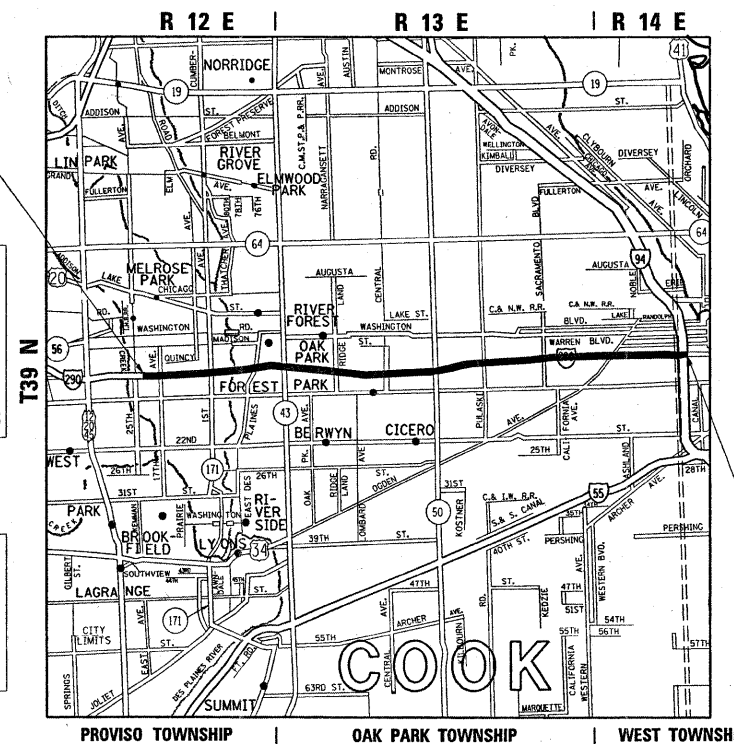
J.U.L.I.E.
JOINT UTILITY LOCATION INFORMATION FOR EXCAVATION
1-800-892-0123 (OR 811)
OR CUAN, 312 - 744 - 7000

PROJECT ENGINEER: JENPAI P. CHANG (847) 705 - 4432
PROJECT MANAGER: KEN ENG

CONTRACT NO. 60F10

OMISSION: INSIDE SHOULDER
STATION 23+66 - STATION 104+70
STATION 122+21 - STATION 125+08
STATION 143+50 - STATION 169+30
STATION 276+96 - STATION 596+13

OMISSION: OUTSIDE SHOULDER
STATION 111+05 - STATION 120+55
STATION 121+85 - STATION 137+84
STATION 164+37 - STATION 281+66



TRAFFIC DATA
1995 ADT = 239,400
SPEED LIMIT = 55 MPH

IMPROVEMENT BEGINS
STATION 619+64

GROSS LENGTH OF IMPROVEMENT = 59,598.00 FEET = 11.29 MILES
NET LENGTH OF IMPROVEMENT = 45,340.00 FEET = 8.59 MILES

STATE OF ILLINOIS
DEPARTMENT OF TRANSPORTATION
DIVISION OF HIGHWAYS

SUBMITTED DECEMBER 16, 2008

Diana M. O'Keefe as
DEPUTY DIRECTOR OF HIGHWAYS, REGION ENGINEER

January 30, 2009
Charles J. Ingersoll
ENGINEER OF DESIGN AND ENVIRONMENT

January 30, 2009
Christine M. Reed
DIRECTOR OF HIGHWAYS, CHIEF ENGINEER

PRINTED BY THE AUTHORITY
OF THE STATE OF ILLINOIS