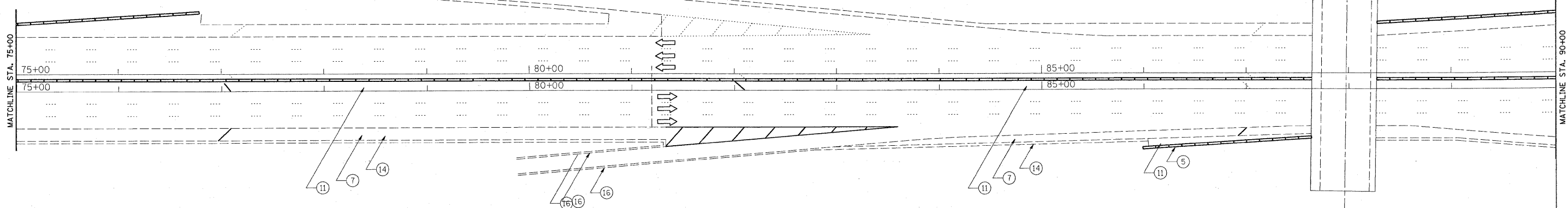


I-290
(EISENHOWER EXPWY)



NOTE:

INSIDE HMA SHOULDER (EASTBOUND):

FROM STA. 104+70 TO STA. 122+21
FROM STA. 125+08 TO STA. 143+50
FROM STA. 169+30 TO STA. 273+96
FROM STA. 596+13 TO STA. 619+64

INSIDE PCC SHOULDER (EASTBOUND):

FROM STA. 23+66 TO STA. 104+70
FROM STA. 122+21 TO STA. 125+08
FROM STA. 143+50 TO STA. 169+30
FROM STA. 276+96 TO STA. 596+13

OUTSIDE HMA SHOULDER (EASTBOUND):

FROM STA. 23+66 TO STA. 111+05
FROM STA. 120+55 TO STA. 121+85
FROM STA. 137+84 TO STA. 164+37
FROM STA. 281+66 TO STA. 619+64

OUTSIDE PCC SHOULDER (EASTBOUND):

FROM STA. 111+05 TO STA. 120+55
FROM STA. 121+85 TO STA. 137+84
FROM STA. 164+37 TO STA. 281+66

NOTE:

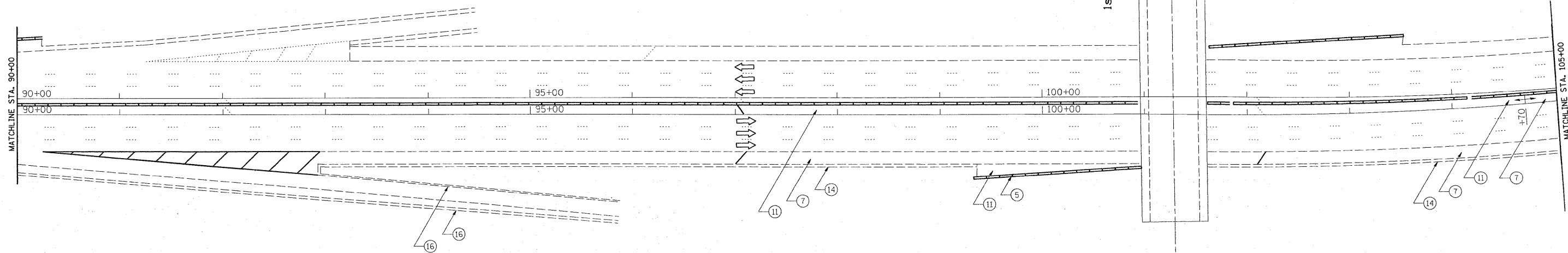
SLURRY SEAL (SEAL COAT) SHALL ONLY BE APPLIED IN THE INSIDE AND OUTSIDE HMA SHOULDERS OF THE EASTBOUND LANES ONLY.
SLURRY SEAL SHALL NOT BE APPLIED ON PCC SHOULDERS, IT SHALL BE OMITTED INSTEAD.
THE RESIDENT ENGINEER SHALL CONTACT MR. DON CHIARUGI, AREA TRAFFIC ENGINEER AT (847) 741 9857 AT LEAST (2) WEEKS PRIOR TO PLACING ANY PAVEMENT MARKINGS.

LEGEND

- (5) EXISTING SINGLE FACE CONCRETE BARRIER WALL
- (7) EXISTING HMA SHOULDER
- (11) EXISTING P.C.C. SHOULDER
- (14) EXISTING COMB. CONC. CURB AND GUTTER TYPE B-6.24
- (16) EXISTING COMB. CONC. CURB AND GUTTER TYPE B-6.12
- (21) EXISTING RETAINING WALL

I-290
(EISENHOWER EXPWY)

1st AVE.



FILE NAME =	USER NAME = g0lbannb	DESIGNED -	REVISED -	STATE OF ILLINOIS DEPARTMENT OF TRANSPORTATION	I-290 (EISENHOWER EXPWY) 25th AVE. - I-9094 ROADWAY PLAN	F.A.I. RTE.	SECTION	COUNTY	TOTAL SHEETS	SHEET NO.	
ci:\pw_work\p\WIDOT\GALBANNB\dms89502\sh	rdwg.dgn	DRAWN -	REVISED -			290	2008-055 I	COOK	33	8	
	PLOT SCALE = 50,0000' / IN.	CHECKED -	REVISED -			SCALE: 1"=50'		FED. ROAD DIST. NO. 1		ILLINOIS FED. AID PROJECT	
	PLOT DATE = 12/18/2008	DATE -	REVISED -			SHEET NO. OF SHEETS STA. TO STA.		CONTRACT NO. 60F10			